



U.S. Department
of Homeland Security
**United States
Coast Guard**

LOCAL NOTICE TO MARINERS

District: 11

Week: 14/23

CORRESPONDENCE TO:
COMMANDER
DISTRICT ELEVEN (DPW)
COAST GUARD ISLAND BUILDING 50-2
ALAMEDA, CA 94501-5100

REFERENCES: COMDTPUB P16502.6, Light List Volume VI, 2017 Edition, U.S. Chart No.1 12th Edition, and Coast Pilot Volume 7 49th Edition. These publications, along with corrections, are available at: <https://nauticalcharts.noaa.gov/>

BROADCAST NOTICE TO MARINERS - Information concerning aids to navigation and waterway management promulgated through BNM HB-0006-23, SF-0070-23, LA-0032-23, and SD-0024-23 have been incorporated in this notice, or will continue if still significant.

ABBREVIATIONS

A through H

ADRIFT - Buoy Adrift
AICW - Atlantic Intracoastal Waterway
Al - Alternating
B - Buoy
BKW - Breakwater
bl - Blast
BNM - Broadcast Notice to Mariner
bu - Blue
C - Canadian
CHAN - Channel
CGD - Coast Guard District
C/O - Cut Off
CONT - Contour
CRK - Creek
CONST - Construction
DAYMK/Daymk - Daymark
DBN/Dbn - Daybeacon
DBD/DAYBD - Dayboard
DEFAC - Defaced
DEST - Destroyed
DISCON - Discontinued
DMGD/DAMGD - Damaged
ec - eclipse
EST - Established Aid
ev - every
EVAL - Evaluation
EXT - Extinguished
F - Fixed
fl - flash
Fl - Flashing
G - Green
GIWW - Gulf Intracoastal Waterway
HAZ - Hazard to Navigation
HBR - Harbor
HOR - Horizontal Clearance
HT - Height

I through O

I - Interrupted
ICW - Intracoastal Waterway
IMCH - Improper Characteristic
INL - Inlet
INOP - Not Operating
INT - Intensity
ISL - Islet
Iso - Isophase
kHz - Kilohertz
LAT - Latitude
LB - Lighted Buoy
LBB - Lighted Bell Buoy
LHB - Lighted Horn Buoy
LGB - Lighted Gong Buoy
LONG - Longitude
LNM - Local Notice to Mariners
LT - Light
LT CONT - Light Continuous
LTR - Letter
LWB - Lighted Whistle Buoy
LWP - Left Watching Properly
MHz - Megahertz
MISS/MSNG - Missing
Mo - Morse Code
MRASS - Marine Radio Activated Sound Signal
MSLD - Misleading
N/C - Not Charted
NGA - National Geospatial-Intelligence Agency
NO/NUM - Number
NOS - National Ocean Service
NW - Notice Writer
OBSCU - Obscured
OBST - Obstruction
OBSTR - Obstruction
Oc - Occulting
ODAS - Anchored Oceanographic Data Buoy

P through Z

PRIV - Private Aid
Q - Quick
R - Red
RACON - Radar Transponder Beacon
Ra ref - Radar reflector
RBN - Radio Beacon
REBUILT - Aid Rebuilt
RECOVERED - Aid Recovered
RED - Red Buoy
REFL - Reflective
RRL - Range Rear Light
RELIGHTED - Aid Relit
RELOC - Relocated
RESET ON STATION - Aid Reset on Station
RFL - Range Front Light
RIV - River
RRASS - Remote Radio Activated Sound Signal
s - seconds
SEC - Section
SHL - Shoaling
si - silent
SIG - Signal
SND - Sound
SPM - Single Point Mooring Buoy
SS - Sound Signal
STA - Station
STRUCT - Structure
St M - Statute Mile
TEMP - Temporary Aid Change
TMK - Topmark
TRLB - Temporarily Replaced by Lighted Buoy
TRLT - Temporarily Replaced by Light
TRUB - Temporarily Replaced by Unlighted Buoy
USACE - Army Corps of Engineers
W - White
Y - Yellow

Additional Abbreviations Specific to this LNM Edition: None

SECTION I - SPECIAL NOTICES

This section contains information of special concern to the Mariner.

SUBMITTING INFORMATION FOR PUBLICATION IN THE LOCAL NOTICE TO MARINERS

A complete set of guidelines with examples and contact information can be found at <http://www.pacificarea.uscg.mil/Our-Organization/District-11/Prevention-Division/LnmRequest/> or call Waterways Management Branch at 510-437-2929 or e-mail D11-SMB-D11-LNM@uscg.mil. Please provide all Local Notice to Mariners submissions 14 days prior to the start of operations

LNM: 17/21

BRIDGE INFORMATION- PROJECTS, DISCREPANCIES, CORRECTIONS & REGULATORY

For all bridge related issues, including lighting, operation, obstructions, construction, demolition, etc. contact the Eleventh Coast Guard District Bridge Administrator 24 hour cell phone at 510-219-4366. Flotsam may accumulate on and near bridge piers and abutments. Mariners should approach all bridges with caution. A vessel delay at a drawbridge may be reported to the District Bridge Administrator by telephone, or by using the [Delay_Report_11-2017.pdf](#) included in the Enclosures section of this Local Notice to Mariners.

BRIDGE INFORMATION-COMMUNICATIONS PROTOCOL-BENICIA/MARTINEZ UPRR BRIDGE- CARQUINEZ STRAIT

All mariners requiring a bridge lift at the Benicia-Martinez Union Pacific Railroad Bridge, mile 7.0, over the Carquinez Strait, California, should follow the protocol in the document entitled "Coordination of Communications for Union Pacific Railroad Lift Operations." Mariners can download a copy of the document by selecting the link BENICIA-MARTINEZ RR BRIDGE under the QUICK LINKS section at <https://www.pacificarea.uscg.mil/vtssf>.

CAUTION TO BE USED IN RELIANCE UPON AIDS TO NAVIGATION

The aids to navigation depicted on charts comprise a system of fixed and floating aids to navigation with varying degrees of reliability. Prudent mariners will not rely solely on any single aid to navigation, particularly a floating aid to navigation. With respect to buoys, the buoy symbol is used to indicate the approximate position of the buoy body and the sinker which secures the buoy to the seabed. The approximate position is used because of the practical limitations in positioning and maintaining buoys and their sinkers in precise geographical locations. These limitations include, but are not limited to, inherent imprecision in position fixing methods, prevailing atmospheric and sea conditions, slope of and the material making up the seabed, the fact that buoys are moored to sinkers by varying length of chain, and the fact that the buoy body and/or sinker positions are not under continuous surveillance, but are normally checked only during periodic maintenance visits which often occur more than a year apart. Due to the forces of nature, the position of the buoy body can be expected to shift inside and outside the charted symbol. The mariner is also cautioned that buoys may be extinguished or sound signals may not function as the result of natural causes, collisions, or other accidents. For the foregoing reasons, a prudent mariner must not rely completely upon the position or operation of floating aids to navigation, but will also utilize bearings from fixed objects and aids to navigation on shore. Furthermore, a vessel attempting to pass close aboard always risks collision with a yawing buoy or with the obstruction that the buoy marks.

NAVIGATION CENTER WEBSITE TRANSITION

The U.S. Coast Guard Navigation Center is going to transition the Navigation Center website to a new, enhanced version in the first quarter of 2022. As part of this transition, URLs will be updated across the site including URLs linked to PDFs. Therefore, once the transition is complete, legacy site URLs will no longer function, including bookmarked URLs and URLs used in automatic downloading of data and/or products. Outdated URLs will automatically redirect to the home page of the site, and from there you will be able to easily navigate to your preferred page.

Below are a few of the "old"/new URL pairs listed for your convenience. Please note that the new URLs will not be active until we launch the new website. Of course, once it is launched, the new URLs will be available for re-bookmarking. As a reminder, these are top level URLs that may contain additional links that you use.

This notice will be updated when the final launch date is determined and another notice will be issued to notify you when the site goes live. Questions/concerns may be directed to the NAVCENWebTEAM@uscg.mil.

Local Notices to Mariners (LNMs)

Current URLs: <https://www.navcen.uscg.gov/?pageName=lnmMain>
Replacement: <https://www.navcen.uscg.gov/local-notices-to-mariners-by-cg-district>

Light Lists Annual Publication

Current URLs: <https://navcen.uscg.gov/?pageName=lightLists>
Replacement: <https://www.navcen.uscg.gov/light-list-annual-publication>

Light List - Weekly

Current URLs: <https://navcen.uscg.gov/?pageName=lightListWeeklyUpdates>
Replacement: <https://www.navcen.uscg.gov/weekly-light-lists>

Light List - Corrections

Current URLs: <https://navcen.uscg.gov/?pageName=lightListCorrections>
Replacement: <https://www.navcen.uscg.gov/light-list-summary-of-corrections>

LNM: 06/22

NORTHERN CALIFORNIA-SAN FRANCISCO-MILE ROCKS LIGHT-REDUCED NOMINAL RANGE

Mile Rocks Light (LLNR 365) will have a temporarily reduced intensity of 5nm until further notice. Mariners are requested to transit the area with caution. For more details or comments contact LT Miranda Brumbaugh at 510-437-2978 or Miranda.E.Brumbaugh@uscg.mil.

Charts: 18007 18010 18020 18022 18640 18649 18680

LNM: 16/19

SAFETY NOTICE - NAVIGATIONAL RANGE AND SECTOR LIGHTS ON ELECTRONIC CHARTS

"The U.S. Coast Guard has become aware that the Range and Sector Light Characteristic labels are not displayed on Electronic Navigational Charts (ENCs) when used in an Electronic Chart Display and Information System (ECDIS) due to limitations of the S-52 ECDIS display specification. Mariners may query the ENC data directly within ECDIS or refer to the Light List for complete information on Range and Sector Light Characteristics."

LNM: 39/22

SOUTHERN CALIFORNIA-SAN DIEGO BAY-MINIMIZE WAKE

The Navy Port Operations Manager requests that vessels slow to 7 kts when a vessel is moored in restricted area (33 CFR 334.865) located on the northeast side of North Island at 32-42-57N 117-11-22W, between San Diego Channel Lighted Buoy 20 (LLNR 1710) and San Diego Channel Lighted Buoy 22 (LLNR 1830). For more details or comments contact LT Rodriguez at 619-545-3232, Rigoberto.rodriguez3@navy.mil.

Chart 18773

LNM: 10/22

SUBMITTING INFORMATION FOR PUBLICATION IN THE LOCAL NOTICE TO MARINERS

Coast Guard District Eleven Waterways upgrade to E-Mail capabilities. All future requests for article submission in the District Eleven Local Notice to Mariners are requested to be E-Mailed to D11-SMB-SMB-D11-LNM@uscg.mil at least two weeks prior to the operation. For more details or comments please contact District Eleven Waterways Management Branch at 510-437-2929 or e-mail D11-SMB-D11-LNM@uscg.mil. Coast Guard District Eleven requests all Local Notice to Mariners submissions be E-Mailed to our office at least 14 days prior to the start of operations for timely submittal and publication.

LNM: 17/21

SECTION II - DISCREPANCIES

This section lists all reported and corrected discrepancies related to Aids to Navigation in this edition. A discrepancy is a change in the status of an aid to navigation that differs from what is published or charted.

DISCREPANCIES (FEDERAL AIDS)

| LLNR | Aid Name | Status | Chart No. | BNM Ref. | LNM St | LNM End |
|-------------|--|---------------------|--------------|-------------------|--------------|---------|
| 5 | Point Loma Light | SS IMCH | 18773 | SD-0001-23 | 04/23 | |
| 10 | San Diego Bay Approach Lighted Whistle Buoy SD | RAC INOP | 18772 | SD-0070-22 | 38/22 | |
| 125 | Long Beach Light | LT EXT | 18751 | LA-0148-20 | 49/20 | |
| 360 | San Francisco Approach Lighted Whistle Buoy SF | RAC INOP | 18649 | SF-0040-22 | 17/22 | |
| 365 | Mile Rocks Light | LT EXT | 18649 | SF-0099-22 | 44/22 | |
| 450 | Point Cabrillo Light | REDUCED INT | 18620 | HB-0006-23 | 05/23 | |
| 545 | Crescent City Harbor Lighted Whistle Buoy 2 | LT EXT | 18603 | HB-0013-22 | 51/22 | |
| 1485 | San Diego Bay Approach Lighted Whistle Buoy SD | RAC INOP | 18772 | SD-0070-22 | 38/22 | |
| 1493 | San Diego Bay Approach Lighted Bell Buoy 4 | LT IMCH | 18772 | SD-0074-22 | 41/22 | |
| 1630 | San Diego Bay Channel Lighted Buoy 17 | MISSING/TRLB | 18773 | SD-0024-23 | 14/23 | |
| 2295 | Oceanside Breakwater Light 1 | REDUCED INT | 18758 | SD-0080-22 | 44/22 | |
| 2635 | Ship Rock Light | LT EXT | 18757 | LA-0095-21 | 26/21 | |
| 2641 | Isthmus Cove Harbor Reefs Light | STRUCT DMGD | 18757 | LA-0018-21 | 05/21 | |
| 2670 | Santa Catalina Island West End Light | LT EXT | 18757 | LA-0113-19 | 34/19 | |
| 2810 | Anaheim Bay Channel Buoy 7 | OFF STA | 18749 | LA-0062-22 | 30/22 | |
| 3012 | Long Beach Light | LT EXT | 18751 | LA-0148-20 | 49/20 | |
| 3117 | Los Angeles Main Channel Lighted Buoy 11 | REDUCED INT | 18751 | LA-0105-21 | 28/21 | |
| 3132 | Terminal Island Channel Lighted Buoy 1 | STRUCT DMGD | 18751 | LA-0027-22 | 16/22 | |
| 3330 | Redondo Beach West Jetty Light 3 | STRUCT DEST | 18744 | LA-0021-23 | 09/23 | |

| | | | | | |
|-------------|--|----------------------|--------------|--------------------|--------------|
| 3625 | Port Hueneme Channel Lighted Buoy 6 | SINKING | 18725 | LA-0091-22 | 39/22 |
| 3750 | Santa Barbara Harbor Breakwater Light | SS INOP | 18725 | LA-0029-23 | 14/23 |
| 3770 | Santa Barbara Harbor Lighted Buoy 5 | LT EXT | 18725 | LA-0030-23 | 14/23 |
| 3845 | Morro Bay Channel Lighted Buoy 2 | OFF STA | 18703 | LA-0013-23 | 04/23 |
| 3877 | Morro Bay Rough Bar Warning Light | LT EXT | 18703 | LA-0027-23 | 12/23 |
| 3970 | Monterey Harbor Light 6 | SS INOP | 18685 | SF-0064-20 | 27/20 |
| 4000 | Moss Landing Harbor Entrance Range Front Light | LT EXT | 18685 | SF-0055-23 | 10/23 |
| 4135 | Pillar Point Harbor Entrance Lighted Buoy 2 | LT EXT | 18680 | SF-0021-23 | 11/23 |
| 4165 | San Francisco Main Ship Channel Lighted Whistle Buoy 2 | LT EXT | 18649 | SF-0006-23 | 02/23 |
| 4245 | Mile Rocks Light | LT EXT | 18649 | SF-0099-22 | 44/22 |
| 4610 | Oakland Outer Harbor Range B Front Light | DAYMK MISSING | 18650 | SF-0070-23 | 14/23 |
| 4615 | Oakland Outer Harbor Range B Rear Light | DAYMK MISSING | 18650 | SF-0068-23 | 14/23 |
| 4617 | Oakland Outer Harbor Centerline Range Front Light | DAYMK MISSING | 18650 | SF--0069-23 | 14/23 |
| 4625 | Oakland Outer Harbor Range A Rear Light | LT EXT | 18650 | SF-0092-22 | 42/22 |
| 4655 | Oakland Outer Harbor Light 13 | MISSING/TRLB | 18650 | SF-0067-23 | 14/23 |
| 4680 | Oakland Inner Harbor Light 10 | MISSING/TRLB | 18650 | SF-0052-21 | 02/22 |
| 4684 | Oakland Inner Harbor Turn Basin Light B | STRUCT DMGD/TRLB | 18650 | SF-0097-21 | 29/21 |
| 4740 | San Leandro Bay Airport Channel Daybeacon 6 | STRUCT DEST/TRUB | 18650 | SF-0033-22 | 15/22 |
| 4830 | San Leandro Marina Channel Light 1 | LT EXT/SS INOP | | SF-0012-23 | 02/23 |
| 5430 | Berkeley Marina Channel Light 2 | LT EXT | 18650 | SF-0086-22 | 40/22 |
| 5485 | San Francisco Bay North Channel Lighted Buoy 8 | OFF STA | 18653 | SF-0016-23 | 03/23 |
| 5495 | San Francisco Bay North Preferred Channel Lighted Buoy B | OFF STA | 18653 | SF-0033-23 | 05/23 |
| 5640 | Southampton Shoal Channel Lighted Buoy 1 | LT EXT | 18653 | SF-0014-23 | 02/23 |
| 5657 | Southampton Shoal Channel Lighted Buoy 5 | REDUCED INT | 18649 | SF-0038-23 | 06/23 |
| 5690 | Richmond Harbor Channel Lighted Buoy 5 | LT EXT | 18650 | SF-0062-23 | 12/23 |
| 5725 | Richmond Harbor Channel Light 9 | MISSING/TRLB | 18649 | SF-0098-22 | 43/22 |
| 5820 | San Francisco Bay North Channel Lighted Bell Buoy 18 | LT EXT | 18649 | SF-0101-22 | 44/22 |
| 5890 | San Pablo Bay Preferred Channel Lighted Buoy E | OFF STA | 18654 | SF-0031-23 | 05/23 |
| 6095 | Mare Island Strait Light 2 | STRUCT DMGD/TRLB | 18655 | SF-0152-20 | 49/20 |
| 6240 | Carquinez Strait Light 23 | LT EXT | 18656 | SF-0008-23 | 02/23 |
| 6310 | Suisun Bay Channel Buoy 3 | OFF STA | 18656 | SF-0116-21 | 36/21 |
| 6433 | Point Edith Crossing Range Front Light | STRUCT DEST/TRLB | 18658 | SF-0067-22 | 32/22 |
| 6505 | Suisun Bay Channel Lighted Buoy 17 | OFF STA | 18658 | SF-0128-21 | 02/22 |
| 6510 | Suisun Bay Channel Lighted Buoy 19 | LT EXT | 18658 | SF-0005-23 | 02/23 |
| 6685 | San Joaquin River Light 8 | STRUCT DMGD/TRLB | 18656 | SF-0109-21 | 02/22 |
| 6855 | San Joaquin River Light 46 | STRUCT DEST/TRLB | 18661 | SF-0057-22 | 28/22 |
| 7210 | Sacramento River Deep Water Ship Channel Light 10 | MISSING/TRLB | 18656 | SF-0101-21 | 32/21 |
| 7235 | Sacramento River Deep Water Ship Channel Light 15 | MISSING/TRLB | 18661 | SF-0100-20 | 35/20 |
| 7240 | Sacramento River Deep Water Ship Channel Light 16 | STRUCT DEST/TRLB | 18661 | SF-0127-18 | 34/18 |
| 7260 | Sacramento River Deep Water Ship Channel Light 20 | MISSING/TRLB | 18661 | SF-0108-21 | 05/23 |

| | | | | | |
|------|---|------------------|-------|------------|-------|
| 7810 | Bodega Harbor Channel Light 6 | STRUCT DMGD/TRLB | | SF-0028-21 | 08/23 |
| 7815 | Bodega Harbor Channel Daybeacon 7 | STRUCT DEST/TRLB | | SF-0046-23 | 08/23 |
| 8085 | Noyo River Entrance Lighted Bell Buoy 2 | OFF STA | 18620 | HB-0005-23 | 05/23 |
| 8360 | Crescent City Harbor Lighted Whistle Buoy 2 | LT EXT | 18603 | HB-0013-22 | 51/22 |
| 8475 | Emerald Bay Entrance Buoy 4 | OFF STA | | SF-0037-23 | 06/23 |
| 8485 | Lake Tahoe Lighted Danger Buoy Q | OFF STA | | SF-0102-22 | 44/22 |

DISCREPANCIES (FEDERAL AIDS) CORRECTED

| LLNR | Aid Name | Status | Chart No. | BNM Ref. | LNM St | LNM End |
|------|--------------------------------------|-------------------|-----------|------------|--------|---------|
| 3772 | Santa Barbara Harbor Lighted Buoy 6 | WATCHING PROPERLY | 18725 | LA-0005-23 | 02/23 | 14/23 |
| 3790 | Santa Barbara Harbor Lighted Buoy 10 | WATCHING PROPERLY | 18725 | LA-0017-23 | 05/23 | 14/23 |
| 3792 | Santa Barbara Harbor Lighted Buoy 12 | WATCHING PROPERLY | 18725 | LA-0016-23 | 05/23 | 14/23 |

DISCREPANCIES (PRIVATE AIDS)

| LLNR | Aid Name | Status | Chart No. | BNM Ref. | LNM St | LNM End |
|---------------|--|--------------------|--------------|-------------------|--------------|---------|
| 20 | Ocean Beach Pier Fog Sound Signal | SS INOP | 18765 | SD-0002-19 | 05/19 | |
| 158 | Scripps Waverider Lighted Research Buoy 092 | OFF STA | 18746 | | 45/18 | |
| 505 | Scripps Waverider Lighted Research Buoy 168 | LT EXT | 18620 | HB-0003-22 | 14/22 | |
| 1665 | Americas Cup Harbor Daybeacon 2 | STRUCT DEST/TRUB | 18773 | SD-0001-22 | 02/22 | |
| 2056 | Sweetwater Channel Light 6 | STRUCT DEST | 18773 | SD-0087-22 | 47/22 | |
| 2070 | Coronado Cays Channel Daybeacon 3 | STRUCT DEST | 18773 | SD-0098-17 | 36/17 | |
| 2090 | Coronado Cays Channel Light 7 | STRUCT DEST/TRUB | 18773 | SD-0046-22 | 31/22 | |
| 2159.1 | Chula Vista Channel Shoal Light B | STRUCT DEST | 18773 | SD-0021-23 | 14/23 | |
| 2288 | Scripps Waverider Lighted Research Buoy 220 | OFF STA | 18765 | SD-0041-20 | 30/20 | |
| 2289.1 | Scripps Waverider Lighted Research Buoy 100 | OFF STA | 18765 | | 22/20 | |
| 2289.4 | Scripps "CORDC" Lighted Research Buoy | MISSING | 18765 | | 22/20 | |
| 2764.4 | Catalina Sea Ranch SE Buoy | MISSING | 18746 | LA-0001-22 | 03/22 | |
| 2871 | Long Beach Harbor Brusco Lighted Mooring Buoy | LT EXT | 18751 | LA-0009-21 | 03/21 | |
| 3339.2 | REDONDO HARBOR LIGHT | LT EXT | 18744 | LA-0181-18 | 52/18 | |
| 3400 | El Segundo NRG Energy Buoy 6ES | SINKING | 18744 | LA-0153-21 | 39/21 | |
| 3420 | Hyperion Lighted Gong Buoy 10 ES | LT EXT | 18744 | | 16/20 | |
| 3972.1 | Monterey Harbor Junction Lighted Buoy A | Status Unreported | 18685 | SF-0039-23 | 06/23 | |
| 4401 | Richardson Bay Daybeacon 8 | DAYMK DMGD | 18653 | | 15/20 | |
| 4402 | Richardson Bay Daybeacon 9 | STRUCT DMGD | 18649 | SF-0086-18 | 23/18 | |
| 4420 | San Francisco-Oakland Bay Bridge Pier A Fog Signal | SS INOP | 18650 | SF-0034-23 | 06/23 | |
| 4425 | San Francisco-Oakland Bay Bridge Pier B Fog Signal | SS INOP | 18650 | SF-0034-23 | 06/23 | |
| 4435 | San Francisco-Oakland Bay Bridge Pier C East Side Fog Signal | SS INOP | 18650 | SF-0034-23 | 06/23 | |
| 4445 | San Francisco-Oakland Bay Bridge Pier D Fog Signal | SS INOP | 18650 | SF-0034-23 | 06/23 | |
| 4460 | San Francisco-Oakland Bay Bridge Pier E Fog Signal | SS INOP | 18650 | SF-0034-23 | 06/23 | |
| 4576 | South Beach Harbor North Entrance Light 2 | LT EXT | 18650 | SF-0047-21 | 11/21 | |
| 4577 | South Beach Harbor North Entrance Light 1 | LT EXT | 18650 | SF-0046-21 | 10/21 | |
| 4578 | South Beach Harbor South Entrance Light 1 | LT EXT | 18650 | SF-0091-20 | 33/20 | |

| | | | | | |
|---------|---|-------------------|-------|------------|-------|
| 4826 | Bay Farm Island Light 1 | LT EXT | 18650 | SF-0014-19 | 05/19 |
| 4826.15 | Bay Farm Island Light 3 | LT EXT | 18650 | SF-0014-19 | 04/19 |
| 4826.2 | Bay Farm Island Light 4 | LT EXT | 18650 | SF-0136-21 | 44/21 |
| 4827.1 | Anchorage 9 Lighted Mooring Buoy A | LT EXT | 18650 | SF-0012-20 | 04/20 |
| 4828.1 | Anchorage 9 Lighted Mooring Buoy B | LT EXT | 18650 | SF-0013-20 | 04/20 |
| 5661 | Southampton Shoal Outfall Lighted Buoy 1 | LT EXT/RAC INOP | 18653 | SF-0026-19 | 07/19 |
| 5661 | Southampton Shoal Outfall Lighted Buoy 1 | MISSING/TRLB | 18653 | SF-0029-20 | 18/21 |
| 5661 | Southampton Shoal Outfall Lighted Buoy 1 | STRUCT DMGD | 18653 | SF-0126-22 | 52/22 |
| 5662 | Southampton Shoal Outfall Lighted Buoy 2 | LT EXT | 18653 | SF-0059-21 | 14/21 |
| 5877.2 | San Rafael Rock Quarry Mooring Buoy C | MISSING | 18653 | | 36/18 |
| 6623 | New York Slough Koch West Light | LT IMCH | | | 39/18 |
| 6624 | New York Slough Koch East Light | LT EXT | | | 39/18 |
| 6645.5 | Delta Diablo Outfall Lighted Buoy | LT EXT | | SF-0005-22 | 02/22 |
| 8325 | Pacific Gas and Electric Dike Light | LT EXT | 18622 | HB-0009-21 | 20/21 |
| 8591.1 | Lake Tahoe NASA-JPL Lighted Research Buoy TB2 | Status Unreported | | | 37/22 |

DISCREPANCIES (PRIVATE AIDS) CORRECTED

| LLNR | Aid Name | Status | Chart No. | BNM Ref. | LNM St | LNM End |
|------|----------|--------|-----------|----------|--------|---------|
|------|----------|--------|-----------|----------|--------|---------|

None

PLATFORM DISCREPANCIES

| Name | Status | Position | BNM Ref. | LNM St | LNM End |
|------|--------|----------|----------|--------|---------|
|------|--------|----------|----------|--------|---------|

None

PLATFORM DISCREPANCIES CORRECTED

| Name | Status | Position | BNM Ref. | LNM St | LNM End |
|------|--------|----------|----------|--------|---------|
|------|--------|----------|----------|--------|---------|

None

SECTION III - TEMPORARY CHANGES and TEMPORARY CHANGES CORRECTED

This section contains temporary changes and corrections to Aids to Navigation for this edition. When charted aids are temporarily relocated for dredging, testing, evaluation, or marking an obstruction, a temporary correction shall be listed in Section IV giving the new position.

TEMPORARY CHANGES

| LLNR | Aid Name | Status | Chart No. | BNM Ref. | LNM St | LNM End |
|------|-----------------|-------------------|-----------|------------|--------|---------|
| 280 | Point Sur Light | Reduced Intensity | 18680 | SF-0105-20 | 35/20 | |

TEMPORARY CHANGES CORRECTED

| LLNR | Aid Name | Status | Chart No. | BNM Ref. | LNM St | LNM End |
|------|----------|--------|-----------|----------|--------|---------|
|------|----------|--------|-----------|----------|--------|---------|

None

PLATFORM TEMPORARY CHANGES

| Name | Status | Position | BNM Ref. | LNM St | LNM End |
|------|--------|----------|----------|--------|---------|
|------|--------|----------|----------|--------|---------|

None

PLATFORM TEMPORARY CHANGES CORRECTED

| Name | Status | Position | BNM Ref. | LNM St | LNM End |
|------|--------|----------|----------|--------|---------|
|------|--------|----------|----------|--------|---------|

None

SECTION IV - CHART CORRECTIONS

This section contains corrections to federally and privately maintained Aids to Navigation, as well as NOS corrections.

This section contains corrective actions affecting chart(s). Corrections appear numerically by chart number, and pertain to that chart only. It is up to the mariner to decide which chart(s) are to be corrected. The following example explains individual elements of a typical chart correction.

| Chart Number | Chart Edition | Edition Date | Last Local Notice to Mariners | Horizontal Datum Reference | Source of Correction | Current Local Notice to Mariners |
|--|------------------------------|--------------|-------------------------------|----------------------------|----------------------|----------------------------------|
| 12327 | 91st Ed. | 19-APR-97 | Last LNM: 26/97 | NAD 83 | | 27/97 |
| Chart Title: NY-NJ-NEW YORK HARBOR - RARITAN RIVER | | | | | | |
| Main Panel 2245 NEW YORK HARBOR | | | | | | |
| (Temp) ADD | NATIONAL DOCK CHANNEL BUOY 3 | | | | CGD01 | 074-02-48.001W |
| | Green can | | | | at 40-41-09.001N | |
| Corrective Action | Object of Corrective Action | | | Position | | |

(Temp) indicates that the chart correction action is temporary in nature. Courses and bearings are given in degrees clockwise from 000 true. Bearings of light sectors are toward the light from seaward. The nominal range of lights is expressed in nautical miles (NM) unless otherwise noted.

| | | | | | | | |
|--|--|------------------|------------------------|---------------|------------------------|----------------|----|
| 50 | 9th Ed. | 01-DEC-15 | Last LNM: 34/22 | NAD 83 | | 14/23 | |
| <i>Chart Title: North Pacific Ocean (eastern part) Bering Sea Continuation</i> | | | | | | | |
| Main Panel 2400 NORTH PACIFIC OCEAN EASTERN PART. Page/Side: A | | | | | | | |
| DELETE | NDBC 46114 STATION 185 | | | | CGD11 36-41-11.400N | 122-19-55.200W | |
| 501 | 13th Ed. | 01-JUN-09 | Last LNM: 31/22 | NAD 83 | | 14/23 | |
| <i>Chart Title: North Pacific Ocean West Coast Of North America Mexican Border To Dixon Entrance</i> | | | | | | | |
| Main Panel 1650 MEXICAN BORDER TO DIXON ENTRANCE. Page/Side: N/A | | | | | | | |
| DELETE | NDBC 46114 STATION 185 | | | | CGD11 36-41-11.400N | 122-19-55.200W | |
| 530 | 35th Ed. | 01-DEC-15 | Last LNM: 34/22 | NAD 83 | | 14/23 | |
| <i>Chart Title: North America West Coast San Diego to Aleutian Islands and Hawaiian Islands</i> | | | | | | | |
| Main Panel 2405 SAN DIEGO TO ALEUTIAN ISLANDS AND HAWAIIAN ISLANDS. Page/Side: A | | | | | | | |
| DELETE | NDBC 46114 STATION 185 | | | | CGD11 36-41-11.400N | 122-19-55.200W | |
| 18010 | 22nd Ed. | 01-SEP-12 | Last LNM: 29/20 | NAD 83 | | 14/23 | |
| <i>Chart Title: Monterey Bay to Coos Bay</i> | | | | | | | |
| Main Panel 1653 MONTEREY BAY TO COOS BAY. Page/Side: N/A | | | | | | | |
| DELETE | NDBC 46114 STATION 185 | | | | CGD11 36-41-11.400N | 122-19-55.200W | |
| 18020 | 39th Ed. | 01-JAN-12 | Last LNM: 10/21 | NAD 83 | | 14/23 | |
| <i>Chart Title: San Diego to Cape Mendocino</i> | | | | | | | |
| Main Panel 1654 SAN DIEGO TO CAPE MENDOCINO. Page/Side: N/A | | | | | | | |
| DELETE | NDBC 46114 STATION 185 | | | | CGD11 36-41-11.400N | 122-19-55.200W | |
| 18022 | 36th Ed. | 01-JUN-11 | Last LNM: 10/21 | NAD 83 | | 14/23 | |
| <i>Chart Title: San Diego to San Francisco Bay</i> | | | | | | | |
| Main Panel 1655 SAN DIEGO TO SAN FRANCISCO BAY. Page/Side: N/A | | | | | | | |
| DELETE | NDBC 46114 STATION 185 | | | | CGD11 36-41-11.400N | 122-19-55.200W | |
| 18622 | 56th Ed. | 01-APR-16 | Last LNM: 05/21 | NAD 83 | | 14/23 | |
| <i>Chart Title: Humboldt Bay</i> | | | | | | | |
| Main Panel 1809 HUMBOLDT BAY. Page/Side: A | | | | | | | |
| LAST EDITION | No new editions of chart 18622 will be published. It will be canceled on 30-Aug-23. Comparable or larger scale Electronic Navigational Chart (ENC) coverage is available. See "Cancellation of NOAA Paper and Raster | | | | | NOS -- | -- |

Nautical Charts" in Section I of this LNM for details. A list of all canceled NOAA charts is at <https://www.charts.noaa.gov/MCD/Dole.shtml>.

18680 **32nd Ed.** **01-MAY-13** **Last LNM: 33/16** **NAD 83** **14/23**
ChartTitle: Point Sur to San Francisco
Main Panel 1866 POINT SUR TO SAN FRANCISCO. Page/Side: N/A
DELETE NDBC 46114 STATION 185 CGD11
36-41-11.400N 122-19-55.200W

18751 **48th Ed.** **01-JUL-16** **Last LNM: 21/09** **NAD 83** **14/23**
ChartTitle: Los Angeles and Long Beach Harbors
Main Panel 1904 LOS ANGELES AND LONG BEACH HARBORS. Page/Side: A
LAST EDITION No new editions of chart 18751 will be published. It will be canceled on 30-Aug-23. Comparable or larger scale Electronic Navigational Chart (ENC) coverage is available. See "Cancellation of NOAA Paper and Raster Nautical Charts" in Section I of this LNM for details. A list of all canceled NOAA charts is at <https://www.charts.noaa.gov/MCD/Dole.shtml>. NOS
-- --

SECTION V - ADVANCE NOTICES

This section contains advance notice of approved projects, changes to aids to navigation, or upcoming temporary changes such as dredging, etc. Mariners are advised to use caution while transiting these areas.

SUMMARY OF ADVANCED APPROVED PROJECTS

| <u>Approved Project(s)</u> | <u>Project Date</u> | <u>Ref. LNM</u> |
|----------------------------|---------------------|-----------------|
| None | | |

Advance Notice(s)

NORTHERN CALIFORNIA-SAN FRANCISCO-SAN BRUNO SHOAL CHANNEL LT 1

The U.S. Coast Guard is planning to install a Mariner Radio Activated Sound Signal (MRASS) device on San Bruno Shoal Channel Light 1 (LLNR 4945). This device will allow the mariner to activate the installed sound signal by keying on a VHF-FM radio microphone six times at the designated frequency for the AtoN (83A). Please direct questions, comments, or concerns no later than 23 May, 2023 to LT Miranda Brumbaugh at 510-437-2984 or Miranda.E.Brumbaugh@uscg.mil.

Chart 18654

LNM: 08/23

SECTION VI - PROPOSED CHANGES

Periodically, the Coast Guard evaluates its system of aids to navigation to determine whether the conditions for which the aids to navigation were established have changed. When changes occur, the feasibility of improving, relocating, replacing, or discontinuing aids are considered. This section contains notice(s) of non-approved, proposed projects open for comment. SPECIAL NOTE: Mariners are requested to respond in writing to the District office unless otherwise noted (see banner page for address).

PROPOSED WATERWAY PROJECTS OPEN FOR PUBLIC COMMENT

| <u>Proposed Project(s)</u> | <u>Closing</u> | <u>Docket No.</u> | <u>Ref. LNM</u> |
|----------------------------|----------------|-------------------|-----------------|
| None | | | |

Proposed Change Notice(s)

CALIFORNIA-SAN FRANCISCO TO SAN DIEGO-REMOVAL OF RACONS ON AIDS TO NAVIGATION

The U.S. Coast Guard will be removing the RACONS from aids to navigation located along the California Coast due to the consistent failure of the signals and that they are no longer considered necessary for safe navigation of the waterways. While there is no specific timeline for the removal of this equipment, it will be coordinated with servicing and discrepancy responses. The removal of the RACONS will be announced by Broadcast Notice to Mariners and published in the Local Notice to Mariners as Chart and Light List corrections. These aids to navigation are:

San Francisco Approach Lighted Whistle Buoy SF (LLNR 360): 37-44-59.761N 122-41-33.995W
Harding Rock Lighted Buoy HR (LLNR 4330): 37-50-17.661N 122-26-45.579W
Los Angeles Approach Channel Lighted Whistle Buoy 3 (LLNR 3107): 33-41-16.012N 118-14-24.050W
Long Beach Channel Approach Lighted Whistle Buoy LB (LLNR 3010): 33-41-24.013N 118-11-01.050W
San Diego Bay Approach Lighted Whistle Buoy SD (LLNR 10): 32-37-20.204N 117-14-45.177W

Mariners are requested to respond in writing to the Coast Guard District office with any comments on this change at D11-SMB-D11-LNM@uscg.mil. Any discrepancy for these or other Aids to Navigation should continue to be reported to the closest US Coast Guard Sector.

Charts: 18007 18010 18022 18640 18649 18650 18680 18746 18749 18765 18772 LNM: 05/23

NORTHERN CALIFORNIA-MONTEREY-MONTEREY HARBOR LIGHT 6

The U.S. Coast Guard is proposing to permanently discontinue the sound signal on Monterey Harbor Light 6 (LLNR 3970). The current aid is in the approximate position: 36-36-30N 121-53-22W. Direct any questions comments or feedback no later than 07 October, 2022 to LT Miranda Brumbaugh at 510-437-2983 or Miranda.E.Brumbaugh@uscg.mil.

LNM: 28/22

Charts: 18680 18685

SOUTHERN CALIFORNIA-ANACAPA ISLAND-ANACAPA ISLAND LIGHT SOUND SIGNAL

The U.S. Coast Guard is proposing to permanently discontinue the sound signal on Anacapa Island Light (LLNR 185). The current aid is in the approximate position: 34-00-57N 119-21-34W. Direct any questions, comments or feedback no later than 14 June, 2023 to LT Miranda Brumbaugh at 510-437-2984 or Miranda.E.Brumbaugh@uscg.mil.

Charts: 18022 18720 18729 18740

LNM: 10/23

SECTION VII - GENERAL

This section contains information of general concern to the Mariners. Mariners are advised to use caution while transiting these areas.

ARIZONA/CALIFORNIA-COLORADO RIVER-BRIDGE

INTERSTATE 8 BRIDGE (YUMA, AZ)-Repair work on the bridge will be conducted Monday through Friday, 6 a.m. to 3 p.m., 27 February, 2023 until 01 September, 2023. A 60 ft X 40 ft temporary trestle will be installed on the south bank of the river, beneath the bridge deck, extending 60 feet into the river. The channel ward ends of the trestle will be lighted at night with steady burning red lights (See I-8_Trestle_Lighting.pdf at the end of this notice.) For bridge condition updates, mariners can contact Caltrans at 858-688-1511 or 858-289-1269. Mariners are requested to transit the area with caution. For further information contact the Coast Guard Bridge Office at 510-437-3515.

LNM: 07/23

ARIZONA/NEVADA-COLORADO RIVER-BRIDGE

NEW LAUGHLIN-BULLHEAD CITY BRIDGE-In-water work continues on construction of the new bridge in position 35-03-17N 114-36-45W. Work is being conducted Monday through Friday, 0630 to 1430, until 03 Oct 23. The access pad on the Arizona side has been reduced exposing piers of the new bridge. The installation of an access pad and silt curtain on the Nevada side of the river is complete. The Arizona side exposed piers and upriver and downriver access pad and the Nevada side silt curtain anchors will be lighted at night with steady burning red lights (see RockAccessPad_Lighting.pdf at the end of this notice). Approximately 117 feet of horizontal clearance will be provided in the center of the river during construction. Precast girders will be installed later in the project once construction of the respective abutments and piers are complete. For on-site conditions contact 702-455-6030 or 702-817-7088, or 702-286-0137. For further information contact the Coast Guard Bridge Office at 510-437-3515.

LNM: 50/22

CALIFORNIA- OFFSHORE CALIFORNIA-SALMON FISHERIES

NMFS has taken inseason action in the recreational and commercial salmon fisheries South of Cape Falcon. The below areas will be closed on the following dates.

1. EFFECTIVE MARCH 15, 2023 AT 12:01 AM THE COMMERCIAL SALMON FISHERY FROM CAPE FALCON TO HECETA BANK LINE IS CLOSED.
 2. EFFECTIVE MARCH 15, 2023 AT 12:01 AM THE COMMERCIAL SALMON FISHERY FROM HECETA BANK LINE TO HUMBBUG MOUNTAIN, OREGON, IS CLOSED.
 3. EFFECTIVE MARCH 15, 2023 AT 12:01 AM HUMBBUG MOUNTAIN TO THE OREGON/CALIFORNIA BORDER IS CLOSED.
 4. EFFECTIVE MARCH 15, 2023 AT 12:01 AM THE RECREATIONAL SALMON FISHERY FROM CAPE FALCON TO HUMBBUG MOUNTAIN OREGON IS CLOSED.
 5. EFFECTIVE MAY 1, 2023 AT 12:01 AM THE COMMERCIAL SALMON FISHERY FROM THE OREGON/CALIFORNIA BORDER TO HUMBOLDT SOUTH JETTY IS CLOSED.
 6. EFFECTIVE APRIL 16, 2023 AT 12:01 AM THE COMMERCIAL SALMON FISHERY FROM LATITUDE 40-10-00N AND POINT ARENA, CA, IS CLOSED.
 7. EFFECTIVE MAY 1, 2023 AT 12:01 AM THE COMMERCIAL SALMON FISHERY FROM POINT ARENA, CA TO PIGEON POINT, CA IS CLOSED.
- EFFECTIVE MAY 1, 2023 AT 12:01 AM THE COMMERCIAL OCEAN SALMON FISHERY FROM PIGEON POINT, CA TO THE U.S./CANADA BORDER IS CLOSED.
EFFECTIVE MAY 1, 2023 AT 12:01 AM THE RECREATIONAL SALMON FISHERY FROM THE OREGON/CALIFORNIA BORDER TO LATITUDE 40-10-00 N IS CLOSED.
EFFECTIVE APRIL 1, 2023 AT 12:01 AM THE RECREATIONAL SALMON FISHERY FROM LATITUDE 40-10-00 N TO POINT ARENA, CA IS CLOSED.
EFFECTIVE APRIL 1, 2023 AT 12:01 AM THE RECREATIONAL SALMON FISHERY FROM POINT ARENA, CA TO PIGEON POINT, CA IS CLOSED
EFFECTIVE APRIL 1, 2023 AT 12:01 AM THE RECREATIONAL SALMON FISHERY FROM PIGEON POINT, CA TO THE U.S./MEXICO BORDER IS CLOSED.
For more details or comments contact Shannon Penna at 562-980-4239.

Charts: 18620 18640 18680 18700 18720 18740

LNM: 11/23

LOWER COLORADO RIVER - MARINE EVENT – LAKE HAVASU-AZ

The Full Throttle WaterX consisting of 65 personal watercraft participating in a closed course race will be held on Lake Havasu in the vicinity of the Havasu Landing Resort on 31 March, 2023 until 2 April, 2023 from 8:00am to 5:00pm. Mariners are requested to transit the area with caution. For more information or comments contact Deegan Newton at 562-756-6268.

LNM: 10/23

LOWER COLORADO RIVER-LAKE HAVASU-MARINE EVENT

The National Water Ski Racing Association (NWSRA) will be sponsoring the NWSRA Springs Classic from 15 April, 2023 until 16 April, 2023 from 8:00am to 5:00pm each day. The event will involve approximately 25 vessels pulling water-skiers on a closed course in the vicinity of the Havasu Springs Resort. Mariners are requested to transit the area with caution. For more details or comments, contact Brian Vesely at 982-208-2263.

LNM: 13/23

LOWER COLORADO RIVER-MARINE EVENT-LAKE HAVASU CITY

The Lake Havasu City Outrigger Canoe Club will sponsor the Havasu Heat event on Saturday, 1 April, 2023 from 6:00am until 4:00pm. This event will consist of 103 canoes participating in a race on Lake Havasu. The race will start in Thompson Bay proceed south to Beaver Island then proceed back north and finish at the starting point. Mariners are advised to exercise due caution while transiting the area. For more details or comments contact Cathy Chandler at 805-320-7862.

LOWER COLORADO RIVER-MARINE EVENT-LAKE HAVASU CITY

LNM: 12/23

LOWER COLORADO RIVER-PARKER-MARINE EVENT

RPM Racing Enterprises will be sponsoring the Blue Water Resort & Casino Rounds 3 & 4 Best of the West Series from 14 April, 2023 until 16 April, 2023 from 6:00am until 6:00pm each day. The event will involve approximately 18-20 classes of personal watercraft racing on a course in the vicinity of Blue Water Beach. Mariners are requested to transit the area with caution. For more details or comments, contact Ross Wallach at 310-318-4012.

LNM: 13/23

LOWER COLORADO RIVER-PARKER-MARINE EVENT

The Arizona Drag Boat Association will be sponsoring the Thunder on the River powerboat races on 31 March, 2023 until 2 April, 2023 from 8:00am to 5:30pm. The event will involve 100 participants racing on a 1000-foot course in the vicinity of La Paz County Park. Mariners are requested to transit the area with caution. For more details or comments contact Jeremy Denny at 602-614-0560.

LNM: 06/23

NORTHERN CALIFORNIA-ALAMEDA TO PIONEER SEAMOUNT AREA-SEA TRIALS

SAILDRONE, INC. is conducting offshore oceanographic research survey testing and will operate up to five Unmanned Surface Vehicles called SAILDRONE Explorers and SAILDRONE Voyagers until 30 April 2023, in the Pioneer Seamount area. The operations will be conducted within the following coordinates:

- Survey Site 1: 37-22.00N 123-19.80W
- 37-22.00N 123-08.40W
- 37-15.00N 123-08.40W
- 37-15.00N 123-19.80W
- Survey Site 2: 37-31.00N 122-57.00W
- 37-28.00N 123-04.00W
- 37-26.00N 122-53.00W
- 37-23.00N 123-00.00W

The Saildrone Explorer is 23 feet long, 16 feet tall, painted orange with a white all-around light on top and marked SAILDRONE. The Saildrone Voyager is 33 feet long, 21 feet tall and painted orange or gray and marked SAILDRONE. Saildrones will broadcast AIS and travel at a speed up to 5 knots. Mariners are requested to transit the area with caution and maintain a 500 meters separation from the Saildrone. For more details or comments contact Saildrone mission control at missioncontrol@saildrone.com or 510-722-6070.

Charts: 18640 18680

LNM: 10/23

NORTHERN CALIFORNIA-ALBION RIVER-BRIDGE

ALBION RIVER (HIGHWAY 1) BRIDGE-AVAILABILITY OF PRELIMINARY PUBLIC NOTICE - The United States Coast Guard is soliciting public comments on a proposal by the California Department of Transportation (Caltrans) to replace the existing Albion River (Highway 1) Bridge. The General Bridge Act of 1946 requires approval of the location and plans for bridges over navigable waters of the United States, prior to commencing construction. A Coast Guard Bridge Permit application has not yet been submitted but would be required for this project.

WATERWAY AND LOCATION: Albion River, mile 0.25, at Albion, Mendocino County, California. 39.225972, -123.769290

Preliminary Public Notice (11-160), dated April 4, 2023, contains a description of the proposed bridge replacement project including maps and bridge drawings detailing the most restrictive navigational clearances for all proposed alternatives. A preferred alternative has not been selected at this time. Interested parties may access Active Public Notices for Bridge Projects for the Eleventh Coast Guard District at the following website: <https://go.usa.gov/xJ8yw>. The public notice may also be obtained by calling the Eleventh Coast Guard District Bridge Office at (510) 437-3515; by writing to Commander (dpw), Eleventh Coast Guard District, Coast Guard Island, Bldg 50-2, Alameda, CA 94501-5100; by email request at D11-SG-M-dpw-Bridges@uscg.mil or by facsimile request at (510) 437-5836.

Mariners are requested to comment on the proposed bridge project. Interested parties are requested to express their views in writing. Comments will be received for the record at the address given in Preliminary Public Notice (11-160) through May 4, 2023.

Chart 18620

LNM: 14/23

NORTHERN CALIFORNIA-ALCATRAZ ISLAND-MARINE CONSTRUCTION

Manson Construction Co. will be conducting marine construction to the wharf at Alcatraz Island at 37-49-36N 122-25-15W. Construction will begin on 23 January, 2023 and be completed on 04 October, 2025. During construction DB HAGAR will be utilizing divers during low tide. Tug WESTAR will be assisting DB HAGAR and monitoring VHF-FM Chan. 13 and 16. Mariners are requested to transit the area with caution. For more details or comments contact Matt Lehmann at 510-529-1583.

Chart 18653

LNM: 50/22

NORTHERN CALIFORNIA-AMPORTS BENICIA PIER-DREDGE OPERATIONS

The Dutra Group will be conducting dredging operations at the Amports Benicia Pier at 38-02-30N 122-08-01W from 30 March, 2023 until 31 April, 2023. DB 24, tow tug HEIDI L BRUSCO, and BECKY T along with five split scows will conduct operations 24 hours, 7 days a week. All vessels will be monitoring VHF-FM Chan. 13, 14, and 80. All dredged material will be disposed of at Montezuma Wetland. Mariners are requested to transit the area with caution. For more details or comments contact Dennis Salyers at 415-497-5289.

Chart 18656

LNM: 13/23

NORTHERN CALIFORNIA-CARQUINEZ STRAIT-BRIDGE

UPSTREAM & DOWNSTREAM I-80 HIGHWAY BRIDGES-Caltrans will be conducting dive operations at the piers and towers of the upstream and downstream bridges, Monday through Friday, from 7 am to 4:30 pm, 03-07 April, 2023 and 10-14 April, 2023. The dive vessel is a 33' aluminum landing craft or 20' work boat with heavy equipment on the deck. Diver's umbilical hose may be floating at or near the surface, adjacent to the vessel. All approaching vessels should contact the vessel, "OFFICIAL BUSINESS" or "SCOW", on VHF-FM CH 16 or by cell 916-798-7148, approximately 30 minutes before transiting the bridge dive site. Extreme caution should be use when passing though the bridges. For further

NORTHERN CALIFORNIA-CARQUINEZ STRAIT-BRIDGE

information, mariners can contact the Coast Guard Bridge Office at 510-437-3516.

Chart 18656

LNM: 10/23

NORTHERN CALIFORNIA-CHINA BASIN-BRIDGE

THIRD STREET BRIDGE-The bascule span of the bridge is secured in the closed-to-navigation position due to damage caused by a break-away barge. Estimated time of repair is unknown. For further information contact the Coast Guard Bridge Office at 510-437-3516.

Chart 18650

LNM: 13/23

NORTHERN CALIFORNIA-DELTA & RIVERS-AMERICAN RIVER-BRIDGE

CAPITAL CITY HWY (Route 51) BRIDGE-Caltrans is conducting rehabilitation of the bridge until 27 June, 2025. Work will be conducted during daylight hours, 7am to 5:30pm, Monday through Friday, and will include the use of barges, work boats, tugboats, turbidity curtains, and access piers. (See AmRiv_SiltCurtain_BargeLocation.pdf in the enclosure section.). During the workday, barges can be moved for the safety of navigation with one hour notice to the contractor via VHF-FM CH 16 or by cell at 916-532-8208. Mariners should contact the contractor before transiting the bridge to determine location of turbidity curtains. Barges will be unmanned and moored at their work locations overnight. Each corner of each barge will be lighted at night with steady burning red lights. At least 25 feet of horizontal clearance for navigation will be available at all times. Mariners are requested to transit the area with caution. For further information, contact the Coast Guard Bridge Office at 510-437-3461.

Chart 18662

LNM: 23/22

NORTHERN CALIFORNIA-DELTA & RIVERS-GEORGIANA SLOUGH-BRIDGE

TYLER ISLAND RD BRIDGE-The upstream northeast red pier light is extinguished. For further information contact the Coast Guard Bridge -Office at 510-437-3514.

Chart 18661

LNM: 11/23

NORTHERN CALIFORNIA-DELTA & RIVERS-MOKELUMNE RIVER-BRIDGE

MOKELUMNE RIVER BRIDGE (HWY 12)-Rehabilitation of the bridge continues, Monday through Friday, 7 am to 5 pm, 15 December, 2022 until 26 May, 2023. Floating equipment utilized during the entire project will include a 40' x 80' spudded crane barge, a 28' x 40' supply barge, a 20' push boat, and a 16' skiff boat. The barges will be anchored in either navigational channel next to the bridge during the work day and will be left on-scene unmanned overnight. Each corner of each barge will be lighted at night. (See MokeRiverBridge_RehabBargeLights.pdf for typical location and lighting diagram.) Lighted buoys will be deployed to direct mariners to the side of the bridge where no work is being conducted. For navigational safety and to request an opening of the swing span during the project, the bridge will open on signal and the barges moved Monday through Friday 7 am to 5 pm, if at least 4-hours notice is given to the bridge owner and at all other times the bridge will open on signal and the barges moved if at least 10-hours notice is given to the bridge owner. For on-scene conditions, mariners can contact the contractor at 510-774-1204 or 925-658-2672. For further information, contact the Coast Guard Bridge Office at 510-437-3461.

Chart 18661

LNM: 51/22

NORTHERN CALIFORNIA-DELTA & RIVERS-MOKELUMNE RIVER-BRIDGE

MILLERS FERRY BRIDGE- The northern most red dolphin light is extinguished. Estimated time of repair unknown. For further information contact the Coast Guard Bridge Office at 510-437-3514.

Chart 18661

LNM: 13/23

NORTHERN CALIFORNIA-DELTA & RIVERS-NAPA RIVER-BRIDGE

HIGHWAY 37 BRIDGE-The northwest fender in the main navigation span of the bridge is damaged and may not offer adequate protection for vessels passing through the bridge. For further information, contact the Coast Guard Bridge Office at 510-437-3516.

Chart 18654

LNM: 09/23

NORTHERN CALIFORNIA-DELTA & RIVERS-OLD RIVER-BRIDGE

CA ROUTE 4 BRIDGE- Critical bridge rehabilitation is taking place 7am to 3:30pm Monday through Friday. Due to unforeseen circumstances, the drawspan will be secured in the closed-to-navigation position until 30 Nov, 2023. The swing span WILL NOT open for the passage of vessels. A 40'x80' work barge will be employed and tied to one of the bridge piers during this time. Mariners can transit through the construction site at the western most span, between the west bank and Pier 2, or other spans not being occupied by the work barge. For navigational safety, during normal work hours the barge can be moved with 4 hours advance notice by contacting the contractor. At other times, the barge can be moved with 24hrs advance notice. Each corner of the moored barge will be lighted at night with steady burning red lights (See OldRiver_Barge_Lighting_Plan.pdf in the enclosure section). In the closed position, the bridge provides 12' vertical clearance above mean high water. Vessels able to transit the bridge while closed can continue to do so at any time. For conditions at the work site, mariners can contact the contractor at 209-513-7309 or 415-375-5549; or Caltrans at 209-470-8835 or 209-465-0935. For further information, contact the Coast Guard Bridge Office at 510-437-3461.

Chart 18661

LNM: 13/23

NORTHERN CALIFORNIA-DELTA & RIVERS-SACRAMENTO RIVER-BRIDGE

RIO VISTA BRIDGE-Caltrans continues major rehabilitation work on the bridge. Therefore, from 6 a.m. on 06 March 23 until 6 p.m. on 25 August 23, the lift span of the bridge will open on signal if at least a 4-hour notification is given to the drawtender. For further information contact the Coast Guard Bridge Office at 510-437-3516.

Chart 18661

LNM: 09/23

NORTHERN CALIFORNIA-DELTA & RIVERS-SACRAMENTO RIVER-BRIDGE

TOWER DRAWBRIDGE- The drawspan will be secured in the closed-to-navigation position for a community event from 8:30am to 12pm on 07 May, 2023. The bridge provides 30' vertical clearance above mean high water when closed. Vessels that can transit the bridge in the closed position may continue to do so at any time. For more details or comments, contact the Coast Guard Bridge Office at 510-437-3461.

Chart 18662

LNM: 11/23

NORTHERN CALIFORNIA-DELTA & RIVERS-SACRAMENTO RIVER-BRIDGE

RIO VISTA BRIDGE-The upriver and downriver green center channel lights on the lift span are not operational. The center span channel lights show

NORTHERN CALIFORNIA-DELTA & RIVERS-SACRAMENTO RIVER-BRIDGE

red in all positions, even when the span is in the fully open-to-navigation position. The bridgetender will be able to inform any vessel requesting an opening when the lift span is fully open. Estimated time of repair is unknown. For further information contact the Coast Guard Bridge Office at 510-437-3516.

Chart 18661

LNM: 49/22

NORTHERN CALIFORNIA-DELTA & RIVERS-SACRAMENTO RIVER-BRIDGE

REPLACEMENT BUTTE CITY BRIDGE- Replacement bridge construction continues Monday through Friday during daylight hours until 01 Sep, 2023. Installation of a temporary trestle has begun. Once trestle is in place, falsework will be installed. A temporary navigation span during construction will be just west of the existing bridge's pivot pier, 435 feet west of new bridge abutment, and is lighting at night with a green center channel light on the upriver and downriver portion of the trestle. Red lights will mark low steel of the remaining spans of the trestle. A buoy line will be installed, pending Coast Guard approval, to guide vessels through the bridge construction area (see ButteConstructionLighting-BuoyLine.pdf enclosure at the end of this notice). The temporary navigation span will provide at least 32 feet of horizontal clearance and 14 feet of vertical clearance from ordinary high water to low steel of the temporary trestle. For on-scene conditions contact Golden State Bridge, Inc, at 415-720-6577 or 925-260-0403 or Caltrans at 530-941-8272 or 530-682-3931. For further information contact the Coast Guard Bridge Office at 510-437-3461.

LNM: 42/22

NORTHERN CALIFORNIA-DELTA & RIVERS-SAN JOAQUIN RIVER-BRIDGE

CROWS LANDING ROAD BRIDGE- Replacement of the bridge is ongoing. Work is being conducted Monday through Friday 0600 to 1600 until 01 Aug, 2023. A temporary bridge, with a removable span, will be installed to facilitate construction. With the span removed, the temporary bridge will provide, at a minimum, 15 feet of horizontal clearance. The span will be removed after normal working hours. Temporary falsework will be installed to facilitate construction. The temporary falsework's navigation span will provide 16 feet of vertical clearance at Ordinary High Water when the temporary bridge's removable span is removed. Upriver and downriver red channel margin lights and green center channel lights will mark the temporary navigation span at night. To view the temporary navigation span and lighting, see the TemporaryBridge_FalseworkLighting.pdf enclosure at the end of this notice. Mariners are requested to use extreme caution when transiting the work site. For conditions at the project site mariners can contact the contractor at 916-869-8210 or 559-593-5182. For further information contact the Coast Guard Bridge Office at 510-437-3461.

LNM: 36/22

NORTHERN CALIFORNIA-HALF MOON BAY-SUNKEN VESSEL

The Coast Guard received a report of a sunken towing vessel in the Pillar Point Harbor at position 37-29-42N 122-29-35W. The T/V CALEB is 94' long, with approximately 3/4 of the vessel visible above the waterline. The vessel is situated on the western side of the harbor with yellow boom surrounding it. Mariners are advised to exercise due caution while transiting in the area. For more details or comments contact LT William Harris at 415-399-7443 or SFWaterways@uscg.mil.

LNM: 23/22

NORTHERN CALIFORNIA-HUMBOLDT BAY-SEASONAL AID DISCONTINUANCE

Humboldt Bay Lighted Bell Buoy 2 (LLNR 8135) has been temporarily discontinued for the 2022-2023 winter season until May 2023. The buoy is scheduled for re-establishment and will be back on-station May 2023. A Synthetic AIS for the aid position is active and will be available year-round for this aid position. For more details or comments contact LCDR Paul Garcia at 510-437-2982 or Paul.A.Garcia2@uscg.mil.

Charts: 18620 18622

LNM: 40/22

NORTHERN CALIFORNIA-MARE ISLAND DRY DOCK-VALLEJO-DREDGE OPERATIONS

The Dutra Group will be conducting dredging operations at the Mare Island Dry Dock in Vallejo, CA at 37-48-33N 122-24-26W, 24 hours a day, 7 days a week from 3-30 April, 2023. All dredged material will be disposed of at SF-9 at 38-04-34N 121-50-30W. DB 24, 05 split hull scows, along with tender tug BECKY T or PHYLLIS T will be conducting the dredge operations. All vessels will monitor VHF-FM Chan. 13, 14, and 80. Mariners are requested to transit the area with caution. For more details or comments contact Dennis Salyers at 415-497-5289.

Chart 18655

LNM: 13/23

NORTHERN CALIFORNIA-MOKELUMME RIVER-ANDRUS ISLAND-SUNKEN VESSEL

The Coast Guard received a report of a sunken partially burned houseboat in the vicinity of Rancho Harbor Marina at position 38-06-30N 121-34-34W. The houseboat is approx. 30 ft long, with none of the vessel visible above the waterline. Mariners are advised to exercise due caution while transiting in the area. For more details or comments contact LT William Harris at 415-399-7443 or SFWaterways@uscg.mil.

Chart 18661

LNM: 50/22

NORTHERN CALIFORNIA-NAPA RIVER-LIGHT OBSTRUCTION

A large tree obstruction is stuck in the mud directly in front of Napa River Light 30 (LLNR 6207). Mariners are requested to transit the area with caution and consider this obstruction during inbound and outbound transits.

Chart 18654

LNM: 40/22

NORTHERN CALIFORNIA-OAKLAND INNER HARBOR-BRIDGE

FRUITVALE AVE RAIL BRIDGE-The lift span of the rail bridge is kept in the partially opened position providing 80 feet of vertical clearance at mean high water. Due to electrical issues, the lift span cannot be lifted to its fully open-to-navigation position of 135 feet above Mean High Water. Repairs are ongoing, estimated time of completion is unknown.

When the lift span of the railroad bridge is in the partially open position and the bascule span of the adjacent highway bridge is in the closed position, the lift span will show two red 180-degree center span lights on the upstream and downstream lower edge of the span. When the bascule span of the highway bridge is in the fully opened position, the lift span of the railroad bridge will show two 360-degree green lights, providing a range for the centerline of the channel between both highway and railroad bridges. For further information contact the Coast Guard Bridge Office at 510-437-3516.

Chart 18649

LNM: 08/23

NORTHERN CALIFORNIA-OFFSHORE MONTEREY BAY-UNDERWATER OPERATIONS

NORTHERN CALIFORNIA-OFFSHORE MONTEREY BAY-UNDERWATER OPERATIONS

Reef Check Foundation have deployed underwater equipment offshore Monterey Bay, CA within the following coordinates:

36-36-17N 121-52-46W

36-36-18N 121-52-49W

36-36-15N 121-52-50W

36-36-14N 121-52-46W

All equipment will be established until 24 Mar 24. Mariners are requested to transit the area with caution and avoid anchoring within the coordinates listed above. For more details or comments contact Dan Abbot at 510-684-7835.

Chart 18685

LNM: 12/21

NORTHERN CALIFORNIA-OFFSHORE MOSS LANDING-SCIENTIFIC OPERATIONS

The Monterey Bay Aquarium Research Institute (MBARI) will be conducting 24hrs a day autonomous, unmanned maritime vehicle operations of two Liquid Robotics, Inc. Wavegliders (www.liquidr.com), from 09 January, 2023 until 31 December, 2023. (MBARI) will deploy the vehicles in the vicinity of Moss Landing. Operations will be between 36-18-00N 122-58-59W and 37-12-00N 122-58-59W. Wave Glider carries no fuel, lubricants, or hydrocarbons, is wave powered, remotely attended from MBARI moving at speeds of 1kt, and designed to give way or part if encountered by a vessel. It is approximately 8ft by 2ft (surfboard size), yellow/copper in color, with a contact plaque and mast extending 3ft above the water surface supporting a flag. Mariners are requested to transit the area with caution. For more details or comments contact MBARI at 831-775-1700, waveglider@listserv.mbari.org, or Liquid Robotics 24/7 WGO Operations at 888-574-4574, 1-408-636-4205.

Charts: 18680 18685

LNM: 02/23

NORTHERN CALIFORNIA-OLD RIVER-HAZARD TO NAVIGATION

The Coast Guard has received a report of downed powerlines in Old River from Mandeville Island to Webb Tract. The downed powerlines have been cut by PG&E and remain laying on the bottom of Old River. Mariners are recommended to avoid anchoring in the area and transit the area with caution. For details or comments contact Coast Guard Sector San Francisco Waterways at 510-612-9729.

Chart 18661

LNM: 01/23

NORTHERN CALIFORNIA-PEYTONIA SLOUGH-SUISUN CITY-SUNKEN VESSEL

The Coast Guard received a report of a sunken vessel in the vicinity of Peytonia Slough State Marine Park in the Peytonia Slough at 38-13-35N 122-02-17W. The vessel is not visible above the waterline, it is situated in the middle of the channel, and has been marked with a red buoy. Mariners are advised to exercise due caution while transiting the area. For more details or comments contact LT Miranda Brumbaugh at 510-437-2978 or Miranda.E.Brumbaugh@uscg.mil.

Chart 18656

LNM: 27/22

NORTHERN CALIFORNIA-RICHARDSON BAY-BUOY DEPLOYMENT

University of California Davis has deployed a buoy at position 37-52-28N, 122-28-53W with characteristics of a flashing yellow light every 2.5 seconds until 01 May 2024. Mariners are requested to transit the area with caution. For more details or comments contact University of California Davis at 707-875-2009 or vessel.ops@ucdavis.edu

Charts: 18653 18662

LNM: 11/23

NORTHERN CALIFORNIA-SACRAMENTO RIVER-RANDALL ISLAND-OVERTURNED VESSEL

The Coast Guard received a report of a partially overturned pleasure craft in the vicinity of Randall Island at position 38-20-34.8N 121-33-37.2W. The vessel is approx. 20ft long, with approx. 50 percent of the vessel visible above the waterline. Mariners are advised to exercise due caution while transiting in the area. For more details or comments contact LT William Harris at 415-399-7443 or SFWaterways@uscg.mil.

Chart 18662

LNM: 50/22

NORTHERN CALIFORNIA-SACRAMENTO RIVER-REDUCED VERTICAL CLEARANCE

Overhead power cables upstream of Sacramento River at 38-03-54N 121-47-09W have a reported reduced vertical clearance to 119.5'.

LNM: 22/16

NORTHERN CALIFORNIA-SACRAMENTO RIVER-RIO VISTA- DIRECTIONAL DRILLING CONSTRUCTION OPERATIONS

ARB Inc. will be conducting horizontal directional drilling operations below the Sacramento River to install a pipeline crossing near the city of Rio Vista at 38-08-53N 121-41-37W to 38-08-49N 121-40-51W. Operations will be conducted between 10 April, 2023 until 31 July, 2023 from 7:00am to 7:30pm, Monday through Saturday. Construction equipment will be staged on land above the adjacent shorelines. Mariners are requested to transit the area with caution. For more details or comments contact Kelvin Qiu at 925-404-3723.

Chart 18661

LNM: 09/23

NORTHERN CALIFORNIA-SACRAMENTO RIVER-SAN JOAQUIN RIVER-GEOTECHNICAL DRILL TESTING

Gregg Drilling and Testing will be conducting Overwater Geotechnical Investigations on the Sacramento River at 38-23-43N 121-30-44W, the San Joaquin River to Mokelumne River between 38-12-48N 121-29-43W and 37-54-20N 121-29-57W. R/V QUIN DELTA will be conducting the operations and monitoring VHF-FM Chan. 13, 14 and 16. Mariners are requested to transit the area with caution. For more details or comments contact Captain Tim O'Donnell at 949-254-5190 or at BEARatSEA@gmail.com.

Charts: 18010 18661 18680

LNM: 36/22

NORTHERN CALIFORNIA-SACRAMENTO RIVER-SUNKEN VESSEL

The Coast Guard received a report of a sunken vessel in the Sacramento River in approximate position 38-36-12N 121-31-03W. The vessel is approximately 16 feet long, and sits in 16 – 20 feet of water. Mariners are advised to exercise due caution while transiting in the area. For more details or comments contact USCG Sector San Francisco Waterways at 415-399-7443 or SFWaterways@uscg.mil.

Chart 18664

LNM: 12/23

NORTHERN CALIFORNIA-SAN DIEGO- SAILDRONE SURVEY

SAILDRONE, INC. is conducting operations with five Uncrewed Surface Vehicles from 1 April, 2023 until 20 July, 2023. SAILDRONE Voyagers are 33 ft in length, 21 ft tall, orange or grey in color, have a tricolor light on top of the wing and are marked "SAILDRONE". These vehicles will be operating in the waters around San Diego and the Channel Islands. Mariners are requested to transit areas with caution and to remain greater than 500

NORTHERN CALIFORNIA-SAN DIEGO- SAILDRONE SURVEY

meters away from the research equipment. Questions regarding saildrone operations should be directed to Saildrone Mission Control, missioncontrol@saildrone.com or 510-722-6070.

Chart 18773

LNM: 14/23

NORTHERN CALIFORNIA-SAN FRANCISCO BAY-BRIDGE

GOLDEN GATE BRIDGE-Four 54' temporary under deck platforms; two, 75' and 425' north of the south tower, and two, 225' and 2,100' south of the north tower have been installed at the bridge. Temporary platforms reduce vertical clearance at the bridge by no more than 14'. The bridge's maintenance travelers are in use during the project and will remain outboard of the furthest north and furthest south temporary platforms. The temporary platforms and maintenance travelers are lighted at night with all-round red lights (see PlatformLighting_GG_Bridge_31Mar23.pdf at the end of this notice). For navigational safety the maintenance travelers can be moved by contacting the Golden Gate Bridge at 415-923-2220. Work is being conducted Monday through Saturday, 0700-1700 and 2100-0500. For conditions at the bridge, mariners can contact the contractor at 415-716-0384. For more details or comments contact the Coast Guard Bridge Office at 510-437-3516.

Chart 18649

LNM: 14/23

NORTHERN CALIFORNIA-SAN FRANCISCO BAY-BRIDGE

SAN MATEO-HAYWARD BRIDGE-Work continues on the causeway portion of the bridge, east of pier 38, 0700 to 1530, Monday through Friday, until 28 Dec, 2023. Various size barges will be used during the project, the largest being a 100' X 20' flexifloat barge. During the work day, barges will either be spudded down or tied to the bridge piers, no anchors or anchor line will be utilized. After regular working hours the unmanned barge will be left on-site. For the safety of navigation, the barges can be moved with one-hour advance notice. For conditions at the bridge mariners can contact Golden State Bridge, Inc., on VHF-FM Marine Radio Channels 13, 14, and 16 or by cell phone at 707-246-0725, 925-260-2104, or 925-382-7288. For more details or comments contact the Coast Guard Bridge Office at 510-437-3515.

LNM: 20/22

NORTHERN CALIFORNIA-SAN FRANCISCO BAY-BRIDGE

SAN MATEO-HAYWARD BRIDGE – The painting of the steel towers continues. Work is being conducted Monday through Friday, 7am to 12am until June 2024. Temporary worker platform will be installed around the base of piers 2 to 11 and 28-37, reducing horizontal clearance in each of those spans by 6 feet. Temporary underdeck work platforms will be installed in spans 12-18 and 21-27, reducing the vertical clearance by three feet. Tarpaulins will be used as containment around all pier columns. An Andersen under-bridge below-deck worker access vehicle will be used during the installation of the temporary containment and temporary platforms. At no time will in-water work be conducted in the main navigation span between piers 19-20, and mariners should this span at all times during this project. For conditions at the bridge, mariners can contact the contractor at 407-489-5386, 303-579-1383, or 910-279-3365. For further information contact the Coast Guard Bridge Office at 510-437-3515.

LNM: 46/22

NORTHERN CALIFORNIA-SAN FRANCISCO BAY-BRIDGE

WESTERN SPAN SAN FRANCISCO-OAKLAND BAY BRIDGE- Caltrans' contractor, Dutra, will continue work to stabilize pier protection at piers B, C, D, and E on the western span of the San Francisco/Oakland Bay Bridge. Work will be conducted 7-days a week, 6 am to 4:30 pm, 17 Apr, through 30 Jun, 2023. The 150' X 54' Crane Barge Kelso will be anchored at various locations during the work and will be monitoring VHF-FM Channels 13, 14, and 16. Barges, anchors and anchor lines will not impede the D-E shipping channel during the work. The barges will remain on-scene, unmanned, during non-working hours. (See SAN FRANCISCO BAY-BRIDGE.pdf in the enclosure section for typical barge locations and limits of anchor lines). During the workday, the barge can be moved for the safety of navigation with two hours advanced notice. After working hours, the barge can be moved with six hours advanced notice. For information at the work site contact 510-867-4545; 510-385-6756; 415-680-0788 or 415-306-3297. For further information, contact the Coast Guard Bridge Office at 510-437-3515.

Chart 18650

LNM: 13/23

NORTHERN CALIFORNIA-SAN FRANCISCO BAY-BRIDGE

RICHMOND-SAN RAFAEL BRIDGE-Concrete/steel repairs and cleaning of the bridge continues. Work is being conducted Monday through Friday, 0500 to 1700, until 15 May, 2023. Temporary underdeck platforms have been installed from the western shore to pier 33 and between piers 43-46 reducing vertical clearance in each span by three feet. The upstream and downstream lower edge of each temporary platform is lighted at night with steady burning red lights (see R-SR_Bridge_Temp_Platform_Lighting.pdf at the end of this notice.) Two 160' X 50' barges and one 110' X 32' barge are being used to assist in the installation of the platforms and for the blasting and painting. One barge has been secured to pier 8 and will be left on-scene, overnight, unmanned. The outboard corners of the barge at pier 8 is lighted at night with steady red lights. Barge "37" and barge "32" can be contacted on VHF-FM Ch. 16, 13 and 14. At no time will the work impede the east or west navigation spans or their auxiliary spans. For conditions at the bridge, mariners can contact the contractor at 860-904-8787 or 443-847-6286. For further information concerning this project contact the Coast Guard Bridge Office at 510-437-3515.

Chart 18653

LNM: 16/21

NORTHERN CALIFORNIA-SAN FRANCISCO BAY-DETERIORATING CONCRETE PILINGS

Deteriorating concrete pilings above and below the waterline are present in the vicinity of the the south edge of Southampton Shoal Light (LLNR 5480). Mariners are requested to transit the area with caution. For more details or comments contact LT Miranda Brumbaugh at 510-437-2978 or Miranda.E.Brumbaugh@uscg.mil.

Chart 18649

LNM: 23/15

NORTHERN CALIFORNIA-SAN FRANCISCO BAY-SURVEY OPERATIONS

SAILDRONE, INC. is conducting oceanographic survey operations and will operate Unmanned Surface Vehicles called Saildrone Explorers and Saildrone Voyagers until 30 April 2023. The operations will be conducted 0.8 nm South of General Anchorage 9 in San Francisco Bay and bounded by the following coordinates:

Area 1:
37-44.41N 122-18.26W
37-44.01N 122-17.24W
37-43.23N 122-18.10W
37-44.09N 122-19.03W
Area 2:
37-42.16N 122-18.28W

NORTHERN CALIFORNIA-SAN FRANCISCO BAY-SURVEY OPERATIONS

37-42.43N 122-17.09W
37-41.31N 123-16.26W
37-41.02N 123-17.46W

The Saildrone Explorer is 23 feet long, 16 feet tall, painted orange with a white all-around light on top and marked SAILDRONE. The Saildrone Voyager is 33 feet long, 21 feet tall and painted orange or gray with a tri-color light on top. Saildrones will broadcast AIS and travel at a speed up to 5 knots. Mariners are requested to transit the area with caution. For more details or comments contact Saildrone mission control at missioncontrol@saildrone.com or 510-722-6070.

Chart 18649

LNM: 10/23

NORTHERN CALIFORNIA-SAN FRANCISCO BAY-TREASURE ISLAND-SUNKEN VESSEL

The Coast Guard received a report of a sunken vessel in the North West corner of Treasure Island at 37-49-41N 122-22-50W and is in approximately 40ft of water with the mast visible above water. Mariners are advised to exercise due caution while transiting in the area. For more details or comments contact USCG Sector San Francisco Waterways at 415-399-7443 or SFWaterways@uscg.mil.

Chart 18650

LNM: 06/23

NORTHERN CALIFORNIA-SAN LEANDRO BAY-BRIDGE

BAY FARM ISLAND HIGHWAY AND PEDESTRIAN BRIDGES-The pier protection system at the bridges have deteriorated and may not offer adequate protection for the bridges as well as vessels transiting the bridge. Mariners are urged to transit both bridges with caution. The bridge owner is in the process of designing a replacement pier protection system. For more details or comments contact the Coast Guard Bridge Office at 510-437-3514.

Chart 18649

LNM: 31/22

NORTHERN CALIFORNIA-SAN LORENZO RIVER-BRIDGE

LAUREL STREET BRIDGE- A new water conveyance pipeline is being installed. To conduct the work, a bucket truck on the bridge deck will be utilized to suspend a mobile platform from the side of the bridge, vertical clearance will be temporarily reduced by 6-feet. Work is being conducted Monday through Friday, 7 am to 4:30pm, until 28 April, 2023. There will be no in-water work or equipment used during this project. Mariners are urged to use caution while transiting the bridge. For further information contact the Coast Guard Bridge Office at 510-437-3515.

Chart 18685

LNM: 02/23

NORTHERN CALIFORNIA-SAN PABLO BAY-TORMEY-MARINE CONSTRUCTION

The Dutra Group will be conducting marine construction to the Phillips 66 San Francisco Refinery located West of the Carquinez Bridge from 03 January, 2023 until 31 December, 2023, during daylight hours. Construction will be bounded by the following coordinates:

38-03-22N 122-15-52W
38-03-25N 122-15-33W
38-03-06N 122-15-34W
38-03-06N 122-15-39W

Crane barge 1, along with a work boat, will be conducting operations and monitoring VHF-FM Chan. 9, 16, and 77. Mariners are requested to transit the area with caution. For more details or comments contact Nicholas Dino at 707-389-0505.

Charts: 18654 18655

LNM: 51/22

NORTHERN CALIFORNIA-SANTA CRUZ HARBOR-SHOALING

As of 9 January, 2023, there is significant shoaling reported in Santa Cruz Harbor caused by weather event in the area. Shoaling reduces charted depth at the entrance and various locations of the harbor. Vessel operators should consider this information for inbound and outbound transits or avoid area until sufficient draft clearances are made available. For latest update on conditions, the Santa Cruz Harbor Office can be contacted at 831-475-6161 or 831-471-1131 as well as VHF-FM Chan. 09 or 16.

Chart 18685

LNM: 02/23

NORTHERN CALIFORNIA-SANTA CRUZ-DREDGE OPERATIONS

The Santa Cruz Port District is conducting dredging operations in the harbor entrance from 15 November, 2022 until 30 April, 2023. A submerged dredging equipment may be in vicinity of the entrance. All mariners entering the Santa Cruz Harbor are requested to contact the dredge TWIN LAKES on VHF-FM Chan. 8 during working hours of 7:00am to 4:00pm Monday through Friday to obtain safe passage information. For information after hours please contact the Santa Cruz Harbor Patrol at 831-475-6161 or 831-471-1131. Mariners are requested to transit the area with caution. For more details or comments contact Blake Anderson at 831-475-6161.

Chart 18685

LNM: 45/22

NORTHERN CALIFORNIA-SUISUN BAY-CONSTRUCTION OPERATIONS

The Dutra Group will be conducting construction in Suisun Bay from 3 April, 2023 until 17 April, 2023 at position 38-03-55N, 122-03-31W. DB-24, PHYLLIS T work boat, supply dredge, and miscellaneous work will be conducting operations. All vessels will be monitoring VHF-FM Chan. 9, 13, 14, 16, and 80A. Mariners are requested to transit the area with caution. For more details or comments contact Jason Tse at 415-300-5336.

Chart 18656

LNM: 14/23

NORTHERN CALIFORNIA-SUISUN BAY-HAZARD TO NAVIGATION

The Coast Guard has received a report of an uncharted private aid in Suisun Bay between Suisun Bay Channel Lighted Buoy 20 (LLNR 6525) and Suisun Bay Channel Lighted Buoy 22 (LLNR 6540) in approximate position 38° 03'30.3" N 121° 59' 18.9" W. This private aid is a single pile structure with "Danger" markings and may be unlit or displaying a yellow light. Mariners are advised to use caution when transiting the area. For more details or comments contact Coast Guard Sector San Francisco Waterways at 510-612-9729.

Chart 18656

LNM: 04/23

NORTHERN CALIFORNIA-SUISUN BAY-MONTEZUMA SLOUGH-MARINE CONSTRUCTION

The California Department of Water Resources advises that will be installing flashboards at the Suisun Marsh salinity control structure, located 2.2 nautical miles from the easterly end of Montezuma Slough at 38-05-36N 121-53-07W. Mariners are advised to use the boat lock. The boat lock signal is a standard traffic light and the operator will monitor VHF-FM Chan. 13. Mariners are requested to transit the area with caution. For more

NORTHERN CALIFORNIA-SUISUN BAY-MONTEZUMA SLOUGH-MARINE CONSTRUCTION

details or comments contact Ian Uecker at 916-574-2991.

Chart 18656

LNM: 34/21

NORTHERN CALIFORNIA-VENICE ISLAND-CONSTRUCTION OPERATIONS

The Dutra Group will be conducting construction at Venice Island from 21 March, 2023 until 31 October, 2023. TM 20 and two 40'x80' flexi barges secured together along with a work boat and two tugboats will be conducting operations. All vessels will be monitoring VHF-FM Chan. 9, 16, and 68A. Mariners are requested to transit the area with caution. For more details or comments contact Scott Brooks at 707-333-5209.

Charts: 18661 18662

LNM: 12/23

SAN DIEGO-OCEANOGRAPHIC SURVEY-OCEAN MONITORING

The City of San Diego Marine Biology Lab is conducting year-round ocean monitoring sampling in the vicinity of the South Bay Ocean Outfall and Point Loma Ocean Outfall. The Ocean Monitoring Program conducts trawl sampling, benthic sampling with a double Van Veen sediment grab, vertical CTD casts and horizontal tows with an undulating underwater vehicle, ROV surveys and multiple moorings are deployed in the region below. Ocean sampling will be conducted in an area bound by the following coordinates:

- 32-31-54N 117-11-11W
- 32-32-10N 117-11-57W
- 32-32-03N 117-12-06W
- 32-32-33N 117-11-56W
- 32-40-10N 117-19-22W
- 32-40-04N 117-19-34W
- 32-39-37N 117-19-32W
- 32-39-56N 117-19-39W
- 32-40-10N 117-16-55W

The M/V OCEANUS and M/V MONITOR III when in the area will monitor VHF-FM Chan. 16. Mariners are requested to transit the area with caution. For more details or comments contact Adriano Feit at 619-758-2377 or 858-882-7055.

Charts: 18765 18772

LNM: 43/21

SOUTHERN CALIFORNIA - SAN DIEGO – MARINE EVENT

The Silver Gate Yacht Club will be sponsoring the 35th America’s Schooner Cup Regatta on 1 April, 2023 from 11:00am until 4:00pm. The event will involve approximately 15 sailing vessels of various sizes racing on a close course starting near Shelter Island, exiting the harbor, rounding buoy 1 then returning to the starting point. Mariners are requested to transit the area with caution. For more details or comments, contact Lisa Clements at (619) 981-5590.

Charts: 18765 18773

LNM: 12/23

SOUTHERN CALIFORNIA - SANTA CRUZ - WAVERIDER BUOY

A Waverider buoy has been deployed at 36-56-04N 122-02-02W near Santa Cruz, CA. The buoy will be used for wave measurements to aid the Coastal Data Information Program. For questions, contact Ross Timmerman at 619-818-8387.

Chart 18685

LNM: 33/22

SOUTHERN CALIFORNIA – CAMP PENDLETON – TEMPORARY BUOYS

The Marine Corps Warfighting Laboratory has deployed 4 temporary buoys just outside of the surf zone in the vicinity of Camp Pendleton.

Approximate positions:

- 33-16.04N, 117-27.06W
- 33-17.23N, 117-28.04W
- 33-17.46N, 117-28.26W
- 33-17.63N, 117-28.43W

The buoys will be in place until 15 August, 2023. Mariners are requested to transit the area with caution. For questions, contact Peter Young at 757-761-0395.

Chart 18774

LNM: 09/23

SOUTHERN CALIFORNIA – SAN PEDRO & CATALINA BASINS – OCEANOGRAPHIC OPERATIONS

Scripps Institution of Oceanography research vessel SALLY RIDE (Call Sign WSAF) will conduct 24-hour surface to floor oceanographic operations from 27 March, 2023 until 30 March, 2023 as follows:

1. SAN PEDRO BASIN between 33-42-00N 118-21-00W and 33-24-00N 118-21-00W.
2. CATALINA BASIN between 33-18-00N 118-23-00W and 33-05-00N 118-41-00W

During over-the-side operations, vessel will be restricted in ability to maneuver; all traffic requested to give SALLY RIDE a wide berth. R/V SALLY RIDE will monitor VHF-FM channels 16 & 13. Mariners are requested to transit the area with caution. For further comments or details contact Wes Hill at (858) 534-5568.

Chart 18740

LNM: 11/23

SOUTHERN CALIFORNIA- ANAHEIM BAY- TEMPORARY BUOYS

The U.S. Coast Guard has established temporary Buoys in Anaheim Bay at the following locations.

- Temp Buoy #9- FI G 4s
Position: 33-43-927N 118-05-981W
- Temp Buoy #10 Q R
Position: 33-43-963N 118-05-818
- Temp Buoy #11 FL G 4s
Position: 33-44-077N 118-05-862W
- Temp Buoy #13 FI G 4s
Position: 33-44-211N 118-05-799W

For more details or comments contact LT Miranda Brumbaugh at 510-437-2978 or Miranda.E.Brumbaugh@uscg.mil.

Charts: 18746 18749

LNM: 29/22

SOUTHERN CALIFORNIA- PORT OF LOS ANGELES-- FENDER REPAIR OPERATIONS

Jilk Heavy Construction Co. will conduct marine construction at the Valero Wilmington Refinery, LA Berth 163-164 in Wilmington, CA. Operations will be 27 March, 2023 until 26 May, 2023 during daylight hours at 33-45-32N 118-16-04W. A crane barge will be in the area and monitoring VHF-FM Chan. 72. Mariners are requested to transit the area with caution. For more details or comments contact Annie Incontro at 310-345-2334.

Charts: 18749 18751

LNM: 12/23

SOUTHERN CALIFORNIA-ALAMITOS BAY-BRIDGE

2ND STREET BRIDGE-The green center channel lights on the bridge are reported extinguished.

APPIAN WAY BRIDGE-The west side green center channel light and red pier lights on the bridge are reported extinguished.

For further information contact the Coast Guard Bridge Office at 510-437-3514.

Chart 18749

LNM: 13/23

SOUTHERN CALIFORNIA-CARLSBAD-MARINE CONSTRUCTION

Kiewit-Shea will be conducting marine construction in the Agua Hedionda Outer Lagoon at 33-08-19N 117-20-17W from 05 January, 2023 until 01 April, 2023. Operations will be conducted on the intake structure of the Claude "Bud" Lewis Carlsbad Desalination Plant. The Excavator CAT 345, a 18ft skiff, along with a 24ft push boat will be conducting operations. Mariners are requested to transit the area with caution. For more details or comments contact Jimmy Huynh at 562-321-3027.

Chart 18774

LNM: 52/22

SOUTHERN CALIFORNIA-CATALINA ISLAND-BUOY DEPLOYMENT

Marine BioEnergy INC. will deploy a yellow research buoy on 29 November, 2022 near Catalina Island, CA with the characteristics of FI Y 4s at 33-28-21N 118-29-33W. The buoy will be deployed until 29 May, 2023. Mariners are requested to transit the area with caution. For more details or comments contact Cindy Wilcox at 818-952-6018.

Chart 18740

LNM: 47/22

SOUTHERN CALIFORNIA-CHANNEL ISLANDS HARBOR-BRIDGES

CHANNEL ISLANDS BLVD EAST (MANDALAY BAY) & CHANNEL ISLANDS BLVD WEST (EDISON CANAL) BRIDGES-Rehabilitation of the bridges will take place 7 am to 3:30 pm, Monday through Friday, 15 February, 2023 through 15 August, 2023. No in-water work will be conducted at the east bridge. At the west bridge two 5' X 20' X 10' flexi-floats will be employed and will be secured with two 35' spuds. The flexi-floats will reduce horizontal clearance in the channel by no more than 10 feet. 8' X 11'cofferdams will encase the bridge columns at each bent. Only one channel of the west bridge will be impacted at any one time. The ends of the cofferdams and each corner of each flexi-floats will be lighted at night with steady burning red lights (See Channel_Islands_Bridge_Rehab.pdf at the end of this article.) For the safety of navigation, the flexi-floats can be moved with a 30-minute advance notice to the contractor. Mariners are requested to approach the west bridge with caution and avoid the span of the bridge where work is being conducted. For further information contact the Coast Guard Bridge Office at 510-437-3516.

Chart 18725

LNM: 06/23

SOUTHERN CALIFORNIA-GULF OF SANTA CATALINA-POINT LOMA-OCEANOGRAPHIC OPERATIONS

The Scripps Institution of Oceanography research vessel SALLY RIDE (Call Sign WSAF) will conduct surface to floor oceanographic operations from 4 April, 2023 until 6 April, 2023 in the vicinity of the following coordinates:

33-33-00N 118-04-00W

33-54-00N 117-56-00W

During over-the-side operations, vessel will be restricted in ability to maneuver. R/V SALLY RIDE will monitor VHF-FM Chan. 13 and 16. Mariners are requested to transit the area with caution. For more details or comments contact Wes Hill at 858-534-5568.

Chart 18740

LNM: 13/23

SOUTHERN CALIFORNIA-IMPERIAL BEACH-MARINE CONSTRUCTION

The Port of San Diego will commence Imperial Beach Pier Enhancements at 32-34-46N 117-07-54W from 15 January, 2023 until 15 June, 2023. Mariners are requested to transit the area with caution. For more details or comments contact the Port of San Diego at 619-540-0230.

Chart 18765

LNM: 03/23

SOUTHERN CALIFORNIA-LONG BEACH HARBOR-MARINE CONSTRUCTION

Rincon Consultants Inc. will be conducting marine construction within the Long Beach Harbor at Junipero Beach at 33-45-42N 118-09-51W from 28 November, 2022 until 31 May 2023. A small craft will be on scene constructing a cofferdam during daylight hours. The vessel will be monitoring VHF-FM Chan. 16. Mariners are requested to transit the area with caution. For more details or comments contact Eric Schaad at 559-514-1837.

Chart 18751

LNM: 46/22

SOUTHERN CALIFORNIA-LONG BEACH HARBOR-MARINE CONSTRUCTION

Dutra Construction Company is conducting marine construction in the Port of Long Beach, CA at the Carnival Cruise Lines Wharf H, 7 days a week until August, 2023. Construction crews will work pier side and will be monitoring VHF-FM Chan. 13, 16, and 72. Mariners are requested to transit the area with caution. For more details or comments contact Andrew Hunt at 415-837-6640.

Charts: 18746 18749 18751

LNM: 08/23

SOUTHERN CALIFORNIA-LOS ANGELES HARBOR-DREDGE OPERATIONS

Manson Construction Co. is conducting dredge operations at the Port of Los Angeles berths 136-139 at 33-45-58N 118-16-24W from 10 April, 2023 until 22 April, 2023. DB VALHALLA, will be assisted by TB ELMER M, PETER M, JEFFEREY M, SB WAHOO, DS EASTPORT, DS NORTHPORT, and DS SOUTHPORT. All vessels will be monitoring VHF-FM Chan. 16 and 67. Dredged materials will be disposed of at disposal site LA-2 at 33-37-06N 118-17-24W. Mariners are requested to transit the area with caution. For more details or comments contact Sergio Covarrubias at 562-983-2397.

Chart 18751

LNM: 13/23

SOUTHERN CALIFORNIA-LOS ANGELES/LONG BEACH HARBOR-BRIDGE

VINCENT THOMAS BRIDGE-A 180 ft temporary platform, used to paint the underside of the bridge, continues to move west from the east tower.

SOUTHERN CALIFORNIA-LOS ANGELES/LONG BEACH HARBOR-BRIDGE

The platform reduces vertical clearance of the bridge by 5.5 ft. It is anticipated the temporary platform will arrive at the east edge of the shipping channel in summer of 2024. The upstream and downstream corners and every 50' along the upstream and downstream side of the platform is lighted at night with steady burning red lights (see V_Thomas_Platform_Lighting1.pdf at the end of this notice). Work will take place during daylight hours, Monday through Friday. For conditions at the bridge mariners can contact 213-479-4138, 213-479-1144 or 310-261-9552. For more details or comments contact the Coast Guard Bridge Office at 510-437-3516.

Chart 18749

LNM: 30/22

SOUTHERN CALIFORNIA-LOS ANGELES/LONG BEACH HARBOR-BRIDGE

PIER 400 BRIDGE MODIFICATION- Construction is taking place Monday through Friday, 6am to 4pm, until 30 Sep, 2023. All in-water equipment and temporary structures will occur within the two existing bridges, and will not impact marine traffic in the area. For conditions at the work site, contact 714-536-9553 or 510-846-0325. For further information contact the Coast Guard Bridge Office at 510-437-3461.

Chart 18749

LNM: 26/22

SOUTHERN CALIFORNIA-LOS CERRITOS CHANNEL-BRIDGE

PACIFIC COAST HIGHWAY BRIDGE-The green center channel lights on the bridge are extinguished. For further information contact the Coast Guard Bridge Office at 510-437-3514.

Chart 18749

LNM: 13/23

SOUTHERN CALIFORNIA-MORRO BAY BREAKWATER LIGHT-SOUND SIGNAL CHANGE

Morro Bay Breakwater Light (LLNR 240) sound signal has been replaced with a Mariner Radio Activated Sound Signal (MRASS). The sound signal can be activated by keying the microphone 6 times within 10 seconds on VHF-FM Chan. 83A and will sound 1 blast every 30 seconds for 15 minutes.

Charts: 18700 18703

LNM: 42/22

SOUTHERN CALIFORNIA-NATIONAL CITY-MARINE CONSTRUCTION

R. E Staite will be conducting dredging operations and marine construction at the Austal USA facility located in National City, California at 32-39-29N 117-07-07W from 1 April, 2023 until 30 September, 2023. DB Point Loma, DB William F, DB Palomar and RES 180 along with multiple scows a survey boat and various deck barges will conduct operations. All vessels will be monitoring VHF-FM Chan. 16. All dredged material will be disposed of at LA-5 ocean disposal site. Mariners are requested to transit the area with caution. For more details or comments contact Erick Myers at 619-233-0178.

Chart 18773

LNM: 12/23

SOUTHERN CALIFORNIA-NEWPORT BEACH-MARINE CONSTRUCTION

Anchor QEA will be conducting a dock replacement for Anchorage Way Marina Dock within Newport Beach, California at 33-36-44N 117-55-25W from 17 April, 2023 until 25 May, 2023. TB CONSTRUCTOR and barge will be monitoring VHF-FM Chan. 16. Mariners are requested transit the area with caution. For more details or comments contact Chad Lucas at 707-430-3565.

Chart 18746

LNM: 11/23

SOUTHERN CALIFORNIA-OCEANSIDE HARBOR-DREDGE OPERATIONS

Manson Construction Co. is conducting hydraulic maintenance dredging at Oceanside harbor, Main channel and Entrance channel 33-12-32N 117-24-07W, 24hrs a day, from 10 April, 2023 until 26 May, 2023. DB MORRIS, DB FREYA, Tender PUP, Tender CUB, and Survey Boat RUSTLER will be conducting operations and monitoring VHF-FM Chan. 16 and 67. Materials will be transported through floating, submerged and shore pipeline to the disposal area North Coast Village, Surf rider way, and Oceanside pier. Mariners are requested to transit the area with caution. For more details or comments contact Max Oviedo at 206-619-7729.

Chart 18758

LNM: 13/23

SOUTHERN CALIFORNIA-OCEANSIDE-MARINE EVENT

The IRONMAN Group/World Triathlon Corporation will be sponsoring the IRONMAN 70.3 Oceanside triathlon on 1 April, 2023 from 6:00am until 10:00pm in Oceanside, CA. The event will involve a swim starting at Oceanside Harbor Beach, entering the harbor channel, and finishing within Oceanside Harbor. A special local regulation zone will be in effect from 5:30am to 10:30am, encompassing all navigable waters around the marine event location. Mariners will be prohibited from transiting through the zone during this period. For more details or comments, contact Sabrina Houston at 760-703-1200.

Chart 18765

LNM: 12/23

SOUTHERN CALIFORNIA-OXNARD-ROCK REVETMENT REPAIR

Larison Contracting will be conducting repair and replacement of rock revetment in Oxnard CA at 34-10-03 N 119-13-31 W until 12 June, 2023. Operation will be monitoring VHF-FM Chan. 16. Mariners are requested to transit at a safe speed to minimize wake and proceed with caution after making passing arrangements. For more information, contact Michael Tripp at 562-427-1900.

Chart 18725

LNM: 45/22

SOUTHERN CALIFORNIA-POINT CONCEPTION-NOAA BUOY DEPLOYMENT

NOAA's Pacific Marine Environmental Laboratory deployed a buoy 11 nautical miles due west of Point Conception, CA. at 34-27-31N 120-41-10W. The buoy named Harvest 22 has a yellow top with gray sides and a flashing amber light every 4 seconds. Mariners are advised to use due caution when transiting this area. For more details or comments contact Cabot Zucker at 425-477-9554.

LNM: 13/22

SOUTHERN CALIFORNIA-PORT OF LONG BEACH-MARINE CONSTRUCTION

Dutra Construction Company will be conducting marine construction and dredging operations of Wharf H at the Port of Long Beach from 01 November, 2022 until 01 June, 2023. Barge WILLIAM F will be monitoring VHF-FM Chan. 16 and 82. Mariners are requested to transit the area with caution. For more details or comments contact Andrew Hunt at 415-847-6640.

Charts: 18749 18751

LNM: 41/22

SOUTHERN CALIFORNIA-REDONDO BEACH-MARINE CONSTRUCTION

SOUTHERN CALIFORNIA-REDONDO BEACH-MARINE CONSTRUCTION

Construction will be Demolishing the Redondo Beach Sports Fishing Pier in Redondo Beach, CA at 33-50-35N 118-23-38W from 27 February, 2023 until 31 May, 2023. Dive operations will be conducted at the pier and assisted by a crane barge. Operations will be between 6:00am until 5:00pm, Monday through Friday. The site superintendent will be on scene monitoring VHF-FM Chan. 72. Mariners are requested to transit the area with caution. For more details or comments contact Joe Salgado at 310-505-0142.

Chart 18744

LNM: 09/23

SOUTHERN CALIFORNIA-SAN CLEMENTE ISLAND-OCEANOGRAPHIC OPERATIONS

The Scripps Institution of Oceanography research vessel ROBERT GORDON SPROUL (Call Sign WSQ-2674) will 24-hour conduct surface to floor oceanographic operations from 11-21 April,2023 in the vicinity of 32-53-00N 117-33-00W and 33-31-00N 120-13-00W. During over-the-side operations, R/V ROBERT GORDON SPROUL will be restricted in ability to maneuver. R/V ROBERT GORDON SPROUL will be monitoring VHF-FM Chan. 13 and 16. Mariners are requested to transit the area with caution. For more comments or details contact David Minor at 858-534-1645.

Chart 18740

LNM: 14/23

SOUTHERN CALIFORNIA-SAN DIEGO BAY-BRIDGE

CORONADO BAY BRIDGE MAINTENANCE-Scaffolding installed between piers 11-12, 12-13, and 13-14, reduces vertical clearance by more than 8'. The upstream and downstream lower edges of the scaffolding are lighted at night with red lights. For more details or comments contact the Coast Guard Bridge Office at 510-437-3461.

Charts: 18772 18773

LNM: 13/20

SOUTHERN CALIFORNIA-SAN DIEGO BAY-DIVE OPERATIONS

Merkel & Associates will be conducting dive operations in San Diego, CA between the Coronado ferry landing and the Embarcadero from 09 April, 2023 until 12 April, 2023. The survey will be conducted on two pipelines which will be located between the following coordinates:

Pipeline number 1:

32-42-02N 117-10-26W and 32-42-30N 117-10-17W

Pipeline number 2:

32-41-57N 117-10-10W and 32-42-22N 117-10-07W

The Survey vessel OK1 (call sign CF3862UC) and a support vessel (call sign CF9883pv) will be monitoring VHF-FM Chan. 16. Mariners are requested to transit the area with caution. For more details or comments contact Keith Merkel at 858-560-5465.

Chart 18773

LNM: 13/23

SOUTHERN CALIFORNIA-SAN DIEGO BAY-MARINE EVENT

The Cortez Racing Association (CRA) will sponsor the CRA Tribute Regatta on 22 April, 2023 from 10:00am until 5:00pm. The regatta will consist of 40 sailboats starting near Harbor Island, proceeding to San Diego Bay Channel Lighted Buoy 16 (LLNR 1620), continuing to San Diego Bay Channel Lighted Buoy 28 (LLNR 1980), and finishing back at Harbor Island. Mariners are requested to transit the area with caution. For more details or comments, contact Dale Greaney at 760-470-1730.

Chart 18773

LNM: 13/23

SOUTHERN CALIFORNIA-SAN DIEGO-MARINE EVENT

The San Diego Yacht Club will be sponsoring the One Design Weekend Monthly Series on various dates throughout CY2023. The event is scheduled for 21-22 January, 11-12 February, 29-30 April, 13 May, 10-11 June, 8-9 July, 12-13 August, 23-24 September, 14-15 October, 11-12 November, and 9 December, 2023. The events will involve approximately 30 sailing vessels racing on a course in Coronado Roads, CA. The course will be centered at approximately 32-39-30N 117-11-40W and will extend southwest up to 1.2 nm. Mariners are requested to transit the area with caution. For more details or comments contact Jeff Johnson at 619-933-9922.

Chart 18773

LNM: 03/23

SOUTHERN CALIFORNIA-SAN DIEGO-MARINE EVENT

The San Diego Yacht Club will be sponsoring the Etchells West Coast Series sailing event on 11 March, 2023 until 12 March 2023, 31 March, 2023 until 2 April, 2023 and 19 May until 21 May, 2023, from 11:00am to 5:00pm each day. The event will involve 35 sailing vessels racing on a course in Coronado Roads, starting at approximately 32-38-00N 117-10-42W and extending 1.2 nm windward in the prevailing wind direction. Mariners are requested to transit the area with caution. For more details or comments contact Jeff Johnson at 619-933-9922.

Chart 18773

LNM: 06/23

SOUTHERN CALIFORNIA-SAN LUIS OBISPO BAY-PORT SAN LUIS HARBOR-DREDGE OPERATIONS

The Port of San Luis Harbor District will be conducting dredge operations at 35-10-25N 120-45-15W from 1 March, 2023 until 31 August, 2023 during daylight hours. Dredged materials will be disposed of at West Bluff Beach and Fisherman's Beach. Mariners are requested to transit the area with caution. For more details or comments contact Natalie Teeter at 805-595-5431.

Charts: 18700 18703

LNM: 09/23

SOUTHERN CALIFORNIA-SAN NICHOLAS ISLAND-ATMOSPHERIC BUOY DEPLOYMENT

Naval Air Systems Command has deployed an atmospheric sampling buoy 1.5 miles Northeast of San Nicolas Island at 33-18-00N 119-30-55W. The yellow buoy Fl Y 3s, is 6 feet above the waterline and 2 feet in diameter. Mariners are requested to transit the area with caution. For more details or comments contact Kyle Edwards at 805-989-0672.

Chart 18720

LNM: 39/22

SOUTHERN CALIFORNIA-SANTA BARBARA-AQUACULTURE ESTABLISHMENT

Ocean Rainforest will be establishing an Aquafarm, starting on 30 March, 2023, located 4.3 NM South of Santa Barbara. The site is bound within four yellow boundary marker buoys with a flashing yellow light every 2 seconds (Fl Y2s) in the following positions:

34-19-58.53N 119-42-45.72W

34-20-10.12N 119-42-45.72W

34-20-11.23N 119-42-07.24W

34-19-59.64N 119-42-07.92W

In line with the outer boundary buoys are small unlit floats that are marking the anchors associated with the Aquaculture area, the total buoys

SOUTHERN CALIFORNIA-SANTA BARBARA-AQUACULTURE ESTABLISHMENT

marking the anchors are 12 on the long axis of each side and 2 between the corner buoys on the short axis. Within the boundary markers will be 188 buoys/floats, see Enclosure AQUACULTURE ESTABLISHMENT.pdf enclosure below. The interior buoys of the aquaculture are in the shape of a rectangle with the outer edge marked with yellow buoys, every other buoy has a flashing yellow light flashing every 2 seconds (Fl Y2s). Within the rectangle are 135 small unlit floats marking the cultivation lines. Mariners are advised to remain clear of this area as entanglement with associated equipment may occur. Vessel DANNY C will be conducting the deployment and monitoring VHF-FM Chan. 7 and 16. For more details or comments contact Ocean Rainforest Inc at 805-722-9601 or eliza@oceanrainforest.com.

Charts: 18720 18725

LNM: 11/23

SOUTHERN CALIFORNIA-SANTA BARBARA-DREDGE OPERATIONS

Pacific Dredge & Construction will be conducting continuous dredging operations in Santa Barbara Harbor from 8 April, 2023 until 30 April, 2023. The D/B SANDPIPER and anchor boat KATHLEEN will be in the area and monitoring VHF-FM Chan. 6 and 16. The dredge will be connected to a floating pipeline which may be up to 4,000' long. A High Voltage Power cable connects the Dredge to the shore and mariners are requested to transit the area with caution. For more details or comments contact Gary Foster at 805-331-2995.

Chart 18725

LNM: 14/23

SOUTHERN CALIFORNIA-TWO HARBORS-CATALINA ISLAND-BUOY DEPLOYMENT

Marine BioEnergy INC. will be conducting biomass research from 17 November, 2022 until 15 May, 2023 at 33-28-12N 118-29-33W. The R/V SEA SCOUT will be deploying a yellow buoy with a light characteristic of Fl Y 4s to study the growth of kelp in the area. Mariners are requested to transit the area with caution. For more details or comments contact Cindy Wilcox at 818-952-6018.

Charts: 18746 18757

LNM: 46/22

SOUTHERN CALIFORNIA-VANDENBERG AFB-HAZARDOUS OPERATIONS

Hazardous operations will be conducted from Vandenberg AFB, CA for Western Range 2315 from 11:45am on 5 April, 2023 until 4:59pm on 6 April, 2023. Hazardous operation areas are bounded by the following coordinates:

Hazard area A:

- 34-37-00N 121-24-00W
- 34-40-00N 122-13-00W
- 34-02-00N 122-58-00W
- 32-12-00N 125-14-00W
- 31-34-00N 125-29-00W
- 31-04-00N 124-45-00W
- 31-26-00N 124-07-00W
- 34-02-00N 121-13-00W (CLOSING THE FIRST POINT)

Hazard area B:

- 23-17-00N 135-50-00W
- 21-37-00N 137-03-00W
- 19-58-00N 133-59-00W
- 22-07-00N 132-44-00W (CLOSING THE FIRST POINT)

Mariners are advised to remain clear of these areas for the duration of operations. For more details or comments contact Vandenberg AFB at 805-606-8825 or on VHF-FM Chan. 06 or 16.

Charts: 18700 18720 18740

LNM: 13/23

SOUTHERN CALIFORNIA-VANDENBERG AFB-HAZARDOUS OPERATIONS

Hazardous operations will be conducted from Vandenberg AFB, CA for Western Range 2314 from 29 March, 2023 until 5 April, 2023. Hazardous operation areas are bounded by the following coordinates.

AREA A

- 34-42-00N - 120-40-00W
- 34-34-00N - 120-20-00W
- 34-22-00N - 120-19-00W
- 33-44-00N - 120-21-00W
- 33-45-00N - 120-28-00W
- 34-26-00N - 120-42-00W (CLOSING THE FIRST POINT)

AREA B

- 31-33-00N - 120-04-00W
- 31-33-00N - 120-01-00W
- 30-35-00N - 119-39-00W
- 30-00-00N - 119-31-00W
- 29-56-00N - 120-03-00W
- 30-32-00N - 120-08-00W (CLOSING THE FIRST POINT)

Mariners are advised to remain clear of these areas for the duration of operations. For more details or comments contact Vandenberg AFB at 805-606-8825 or on VHF-FM Chan. 06 or 16.

Charts: 18700 18720 18740

LNM: 13/23

SOUTHERN CALIFORNIA-VANDENBERG AFB-HAZARDOUS OPERATIONS

Hazardous operations will be conducted from Vandenberg AFB, CA for Western Range 2316 from 11 April, 2023 until 15 April, 2023. Hazardous operation areas are bounded by the following coordinates:

HAZARD AREA

- 34-40-00N - 120-39-00W
- 34-39-00N - 120-28-00W
- 34-25-00N - 120-28-00W
- 31-21-00N - 121-14-00W
- 31-23-00N - 121-21-00W
- 34-35-00N - 120-43-00W (CLOSING THE FIRST POINT)

SOUTHERN CALIFORNIA-VANDENBERG AFB-HAZARDOUS OPERATIONS

B. HAZARD AREA

31-23-00N - 121-21-00W
31-21-00N - 121-14-00W
29-46-00N - 121-13-00W
29-08-00N - 121-27-00W
29-29-00N - 122-12-00W (CLOSING THE FIRST POINT)

Mariners are advised to remain clear of these areas for the duration of operations. For more details or comments contact Vandenberg AFB at 805-606-8825 or on VHF-FM Chan. 06 or 16.

Charts: 18700 18720 18740

LNM: 14/23

SOUTHERN CALIFORNIA-VENTURA HARBOR-DREDGE OPERATIONS

Manson Construction Co. is conducting hydraulic maintenance dredging of the Ventura Harbor Main Channel, entrance and sand trap at 34-14-51N 119-16-07W 24 hours a day from 01 March, 23 until 15 April, 2023. Dredge HR MORRIS, DB FREYA, dredge tender PUP, dredge tender CUB, and survey boat RUSTLER will monitor VHF-FM Chan. 16 and 67. Material will be transported through floating pipeline, submerged pipeline, and shore pipeline to the disposal area south of surfer's knoll. Mariners are requested to transit the area with caution. For more details or comments contact Project Manager Max Oviedo at 206-619-7729.

Chart 18725

LNM: 08/23

SOUTHERN CALIFORNIA-WILMINGTON-FENDER REPAIRS

Jilk Heavy Construction Co. will be conducting fender repairs at the Valero Wilmington Refinery, LA Berth 163-164 in Willmington, CA. Operations will be until 04 April, 2023 07 April, 2023 during daylight hours. A crane will be in the area and monitoring VHF-FM Chan. 72. Mariners are requested to transit the area with caution. For more details or comments contact Annie Incontro at 310-345-2334.

Charts: 18749 18751

LNM: 14/23

SECTION VIII - LIGHT LIST CORRECTIONS

An Asterisk *, indicates the column in which a correction has been made to new information

| (1) No. | (2) Name and Location | (3) Position | (4) Characteristic | (5) Height | (6) Range | (7) Structure | (8) Remarks | |
|------------|--|-----------------|-----------------------|---------------|--------------|------------------|-------------------|-------|
| 298 | <i>NOAA Environmental Lighted Buoy 46114</i> | | | | | | Remove from list. | 14/23 |
| | | | | | | | * | |
| 8195 | <i>Humboldt Bay Lighted Buoy 9</i> | | | | | | Remove from list. | 14/23 |
| | | | | | | | * | |

PUBLICATION CORRECTIONS

ANNOUNCEMENT – U.S. Coast Pilot® 7 and U.S. Coast Pilot® -NEW EDITIONS-Spring 2022

PUBLICATION–National Oceanic Atmospheric Administration (NOAA) – U.S. Coast Pilot 7, Pacific Coast: California, 54th Edition, 2022, has been issued and is ready for free download and weekly updates at www.nauticalcharts.noaa.gov/publications/coast-pilot/index.html.

Only Print-on-Demand (POD) bound copies are available for purchase; visit nauticalcharts.noaa.gov/publications/print-agents.html#coast-pilot. The 2022 Edition cancels the preceding 2021 Edition, and incorporates all previous corrections.

LNM: 21/22

ANNOUNCEMENT – U.S. Coast Pilot® 7 and U.S. Coast Pilot® 10 - NEW EDITIONS – Spring 2020

U.S. Coast Pilot 7 will be divided into two editions in the spring 2020 due to its large size. The following are the projected new editions that will be issued on the same date and ready for free download and weekly updates on June 9, 2020, at nauticalcharts.noaa.gov/publications/coast-pilot/index.html.

PUBLICATION–National Oceanic Atmospheric Administration (NOAA) – U.S. Coast Pilot 7, Pacific Coast: California 52nd Edition, 2020

PUBLICATION–National Oceanic Atmospheric Administration (NOAA) – U.S. Coast Pilot 10, Pacific Coast: Oregon, Washington, Hawaii and Pacific Islands 1st Edition, 2020

Only Print-on-Demand bound copies are available for purchase; visit nauticalcharts.noaa.gov/publications/print-agents.html#coast-pilot

For any questions or comments; visit nauticalcharts.noaa.gov/customer-service/assist/

NOAA Office of Coast Survey's Nautical Publications Branch
April 2020

LNM: 18/20

ENCLOSURES

REPORT OF DELAY AT DRAWBRIDGE

[Delay_Report_11-2017.pdf](#)

Use link above to Report a Delay at a Drawbridge.

LNM: 06/07

SOUTHERN CALIFORNIA-CHANNEL ISLANDS HARBOR-BRIDGES

[Channel_Islands_Bridge_Rehab.pdf](#)

CHANNEL ISLANDS BLVD EAST (MANDALAY BAY) & CHANNEL ISLANDS BLVD WEST (EDISON CANAL) BRIDGES-Lighting diagram for cofferdams and flexi-floats.

LNM: 06/23

NORTHERN CALIFORNIA-DELTA & RIVERS-AMERICAN RIVER-BRIDGE

[AmRiv_SiltCurtain_BargeLocation.pdf](#)

CAPITAL CITY HWY (ROUTE 51) BRIDGE-See link above for barge and silt curtain locations.

LNM: 22/22

NORTHERN CALIFORNIA-SAN FRANCISCO BAY-BRIDGE

[PlatformLighting_GG_Bridge_31Mar23.pdf](#)

GOLDEN GATE BRIDGE-Temporary Platform Location and Lighting revised 31 March, 2023.

LNM: 14/23

NORTHERN CALIFORNIA-SAN FRANCISCO BAY-BRIDGE

[R-SR_Bridge_Temp_Platform_Lighting.pdf](#)

RICHMOND-SAN RAFAEL BRIDGE- See link above for temporary underdeck platform lighting for concrete and steel repairs.

LNM: 48/21

NORTHERN CALIFORNIA-DELTA & RIVERS-SACRAMENTO RIVER-BRIDGE

[ButteConstructionLighting-BuoyLine.pdf](#)

REPLACEMENT BUTTE CITY BRIDGE-See link above for temporary construction trestle and lighting and proposed buoy line..

LNM: 36/22

NORTHERN CALIFORNIA-DELTA & RIVERS-SAN JOAQUIN RIVER-BRIDGE

[TemporaryBridge_FalseworkLighting.pdf](#)

CROWS LANDING REPLACEMENT-See link above for temporary falsework, temporary bridge, the temporary navigation channel during construction with navigation lighting plan.

LNM: 36/22

NEVADA-ARIZONA-COLORADO RIVER-BRIDGE

[RockAccessPad_Lighting.pdf](#)

NEW LAUGHLIN-BULLHEAD CITY BRIDGE-See link above for temporary rock access pad, pier and silt curtain anchor lighting and configuration.

LNM: 50/22

NORTHERN CALIFORNIA-DELTA & RIVERS-OLD RIVER-BRIDGE

[OldRiver_Barge_Lighting_Plan.pdf](#)

CA ROUTE 4 BRIDGE-See link above for typical barge lighting and location during rehabilitation project.

LNM: 44/22

NORTHERN CALIFORNIA-DELTA & RIVERS-MOKELUMNE RIVER-BRIDGE

[MokeRiverBridge_RehabBargeLights.pdf](#)

MOKELUMNE RIVER BRIDGE (HWY 12)-See link above for typical barge and buoy lighting and location during rehabilitation project.

LNM: 48/22

NORTHERN CALIFORNIA-MONTEREY BAY-SURVEY OPERATIONS

[MONTEREY BAY-SURVEY OPERATIONS.pdf](#)

see link above.

LNM: 04/23

NORTHERN CALIFORNIA-OFFSHORE CAPE MENDOCINO-SURVEY OPERATIONS

[CAPE MENDOCINO-SURVEY OPERATIONS.pdf](#)

see link above.

LNM: 04/23

ARIZONA/CALIFORNIA-COLORADO RIVER-BRIDGE

[I-8_Trestle_Lighting.pdf](#)

INTERSTATE 8 BRIDGE (YUMA, AZ)-See link above for temporary trestle lighting.

LNM: 7/23

NORTHERN CALIFORNIA-SAN FRANCISCO BAY-BRIDGE

[SAN FRANCISCO BAY-BRIDGE.pdf](#)

SAN FRANCISCO BAY-OAKLAND- BAY BRIDGE-typical barge location during fender repairs.

LNM: 12/23

SOUTHERN CALIFORNIA-SANTA BARBARA-AQUACULTURE ESTABLISHMENT

[AQUACULTURE ESTABLISHMENT.png](#)

see link above.

LNM: 03/23

SOUTHERN CALIFORNIA-PORTS OF LOS ANGELES/LONG BEACH-LA/LB HARBOR-BRIDGE

[V_Thomas_Platform_Lighting1.pdf](#)

See link above for platform lighting for Vincent Thomas Bridge.

LNM: 28/19

THE LOCAL NOTICE TO MARINERS IS AVAILABLE ON THE WORLD WIDE WEB AT [HTTPS://WWW.NAVCEN.USCG.GOV](https://www.navcen.uscg.gov)

W. J. George, CDR
U.S. Coast Guard
Chief Waterways Management Branch

**U.S. COAST GUARD
REPORT OF DELAY AT DRAWBRIDGE
PER 33 CFR 117.5**

BRIDGE NAME: _____ DATE: _____

MILE : _____ WATERWAY: _____

1. Name/ Type of Vessel: _____ Direction of Travel : _____

2. Vessel Owner (Name): _____

(Address): _____

3. Name of Pilot (if applicable): _____

(Address): _____

4. Time vessel signaled for bridge opening: _____

5. Location of vessel when signal was given: _____

6. Time and location of vessel when delay began: _____

7. Method of signal for bridge opening: () Radio () Sound () Visual.

(If sound or visual signal was used, specify: _____)

8. Time bridge operator acknowledged signal: _____

9. Method of bridge operator acknowledgement: () Radio () Sound () Visual

(If sound or visual signal was used, specify: _____)

10. Did bridge operator acknowledgement indicate the bridge,

() Could be opened immediately?

() Could not be opened immediately?

11. If land traffic crossed the bridge:

Time land traffic started across the bridge _____

Time land traffic stopped crossing the bridge _____

Did land traffic stop on the bridge? _____

Duration land traffic stopped on the bridge _____

12. Time drawbridge opened for navigation _____

13. Additional comments:

I certify the above information is true to the best of my knowledge and understand this statement may be used by the U.S. Coast Guard in levying fines against the bridge owner.

Signature _____

Telephone _____

Mariners may complete and return to:

Commander (dpw)
Eleventh Coast Guard District
Coast Guard Island, Building 50-2
Alameda, CA 94501-5100
Attn: Bridge Office

Fax: (510) 437-5836

Email: Carl.T.Hausner@uscg.mil

Questions? Please contact: Carl Hausner, Bridge Administrator, Eleventh Coast Guard District

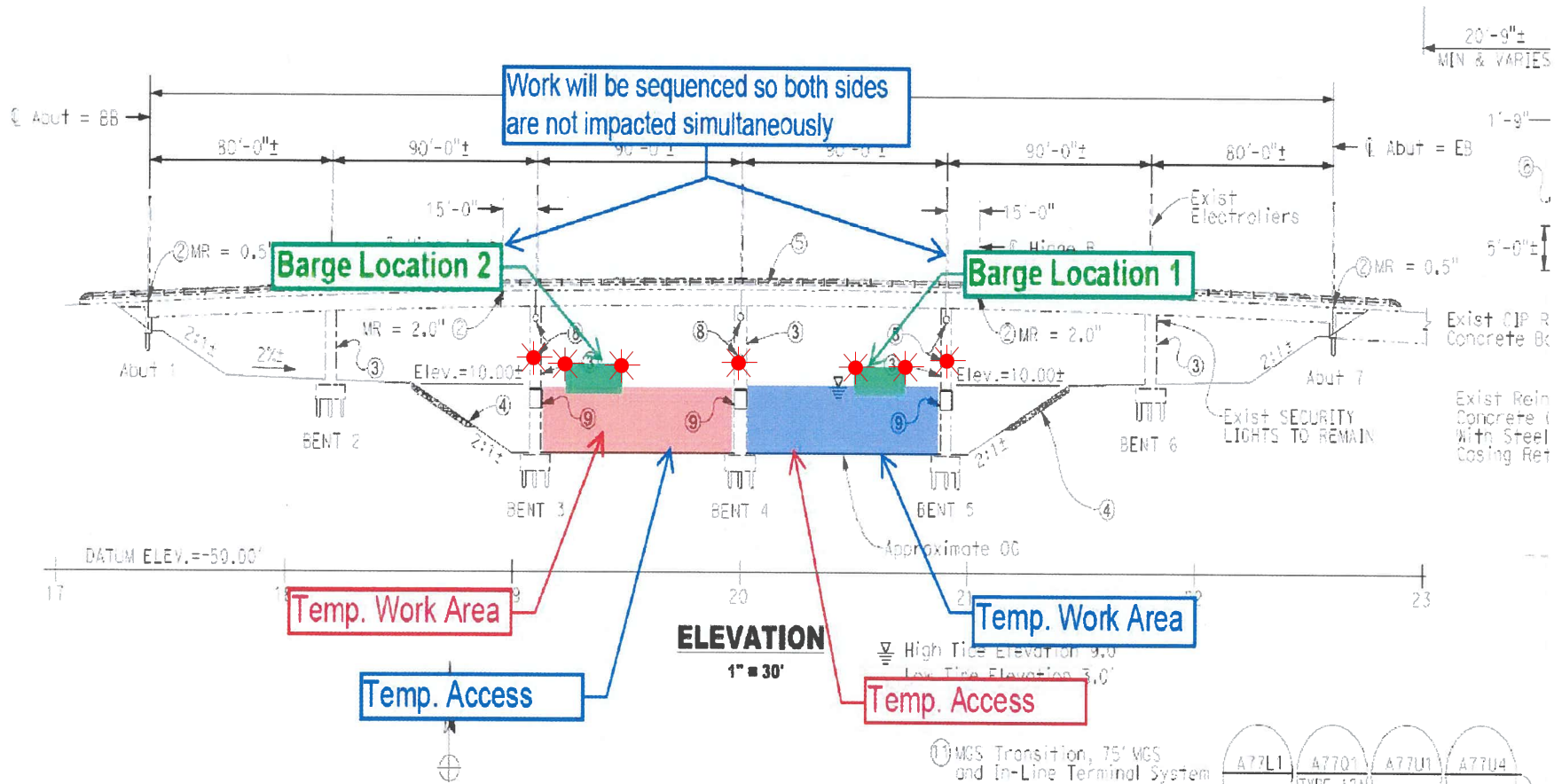
Office: (510) 437-3516

Cell: (510) 219-4366

Mariners are reminded not to require bridge openings for appurtenances nonessential to navigation, per 33 CFR 117.11

Rehabilitation of the Channel Islands Blvd West Bridge (Edison Canal) over Channel Islands Harbor

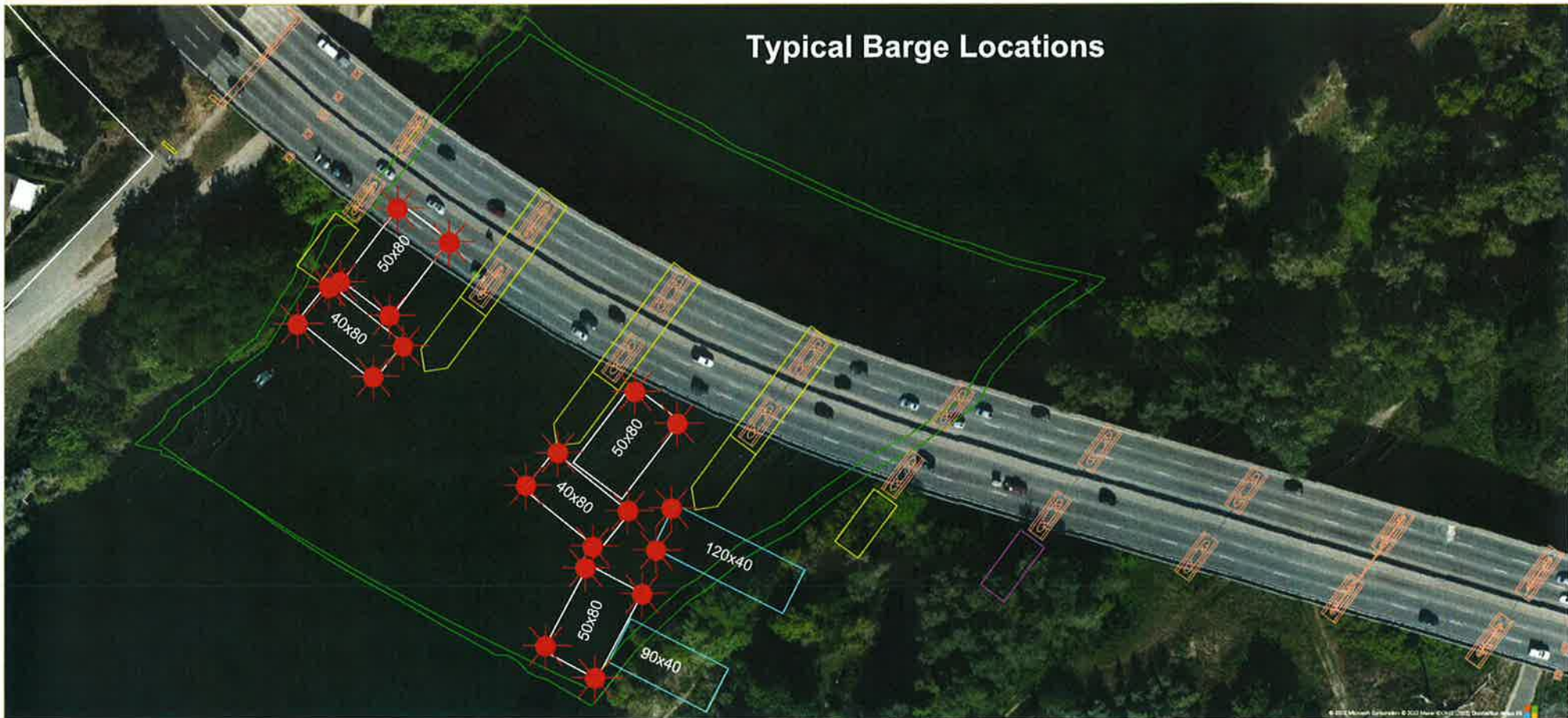
Flexi-Float and Cofferddam Lighting



The upstream and downstream ends of the temporary cofferdams and each corner of each flexi-float barge shall be lighted at night with steady burning red lights visible at 2,000 yards by approaching vessels. Only one span will be worked on at any one time, leaving the other span available for mariners.

Rehabilitation and Modification Project
Capital City (CA Route 51) Bridge, Mile 4.0, American River

Typical Barge Location and Typical Barge Lighting



Each corner of each barge is lighted at night with steady burning all-round red light, visible at 2,000 by approaching vessels. All vessels transiting the project area should use extreme caution. Turbidity curtains will be placed at different locations during the project. The next four diagrams show the proposed location of the curtains.



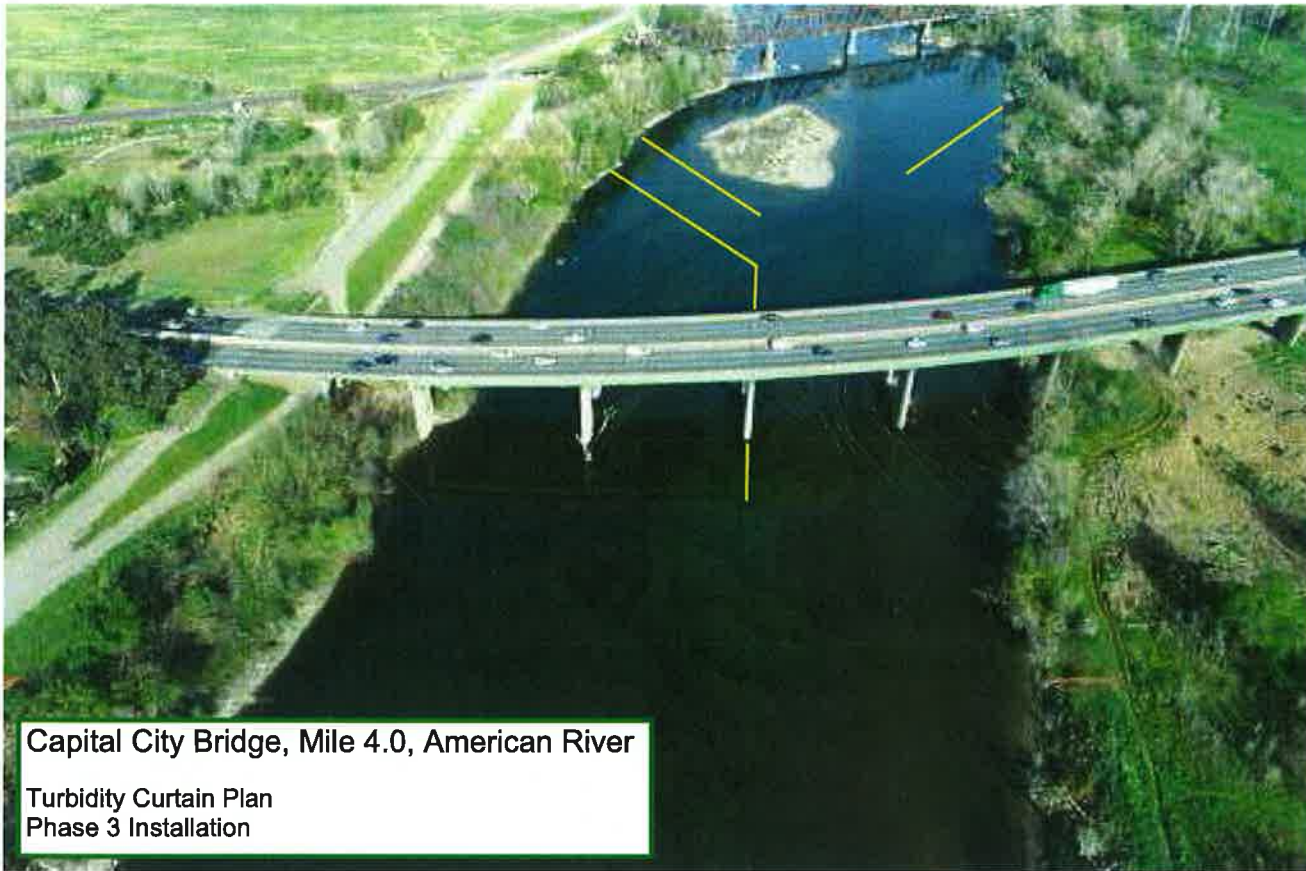
Capital City Bridge, Mile 4.0, American River

Turbidity Curtain Plan
Phase 1 Installation



Capital City Bridge, Mile 4.0, American River

Turbidity Curtain Plan
Phase 2 Installation



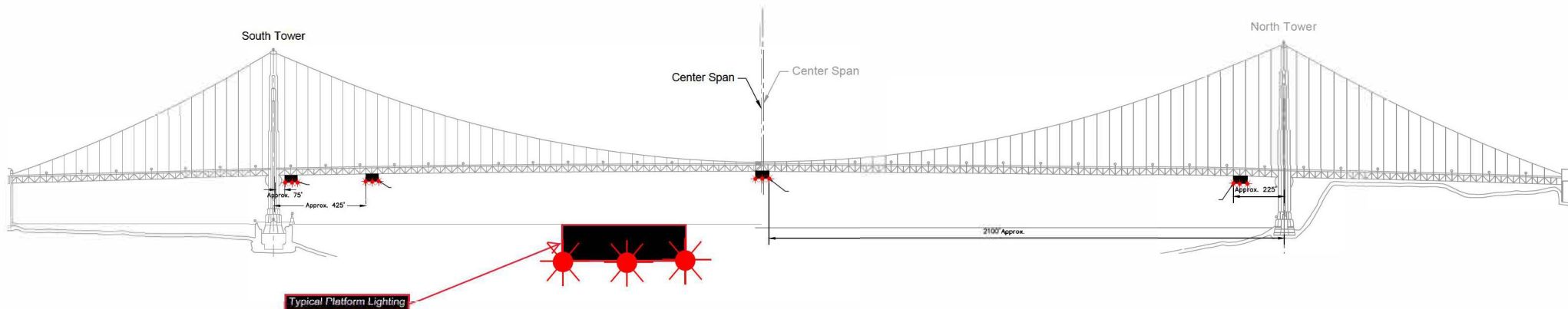
Capital City Bridge, Mile 4.0, American River

Turbidity Curtain Plan
Phase 3 Installation



Capital City Bridge, Mile 4.0, American River
Turbidity Curtain Plan
Phase 4 Installation

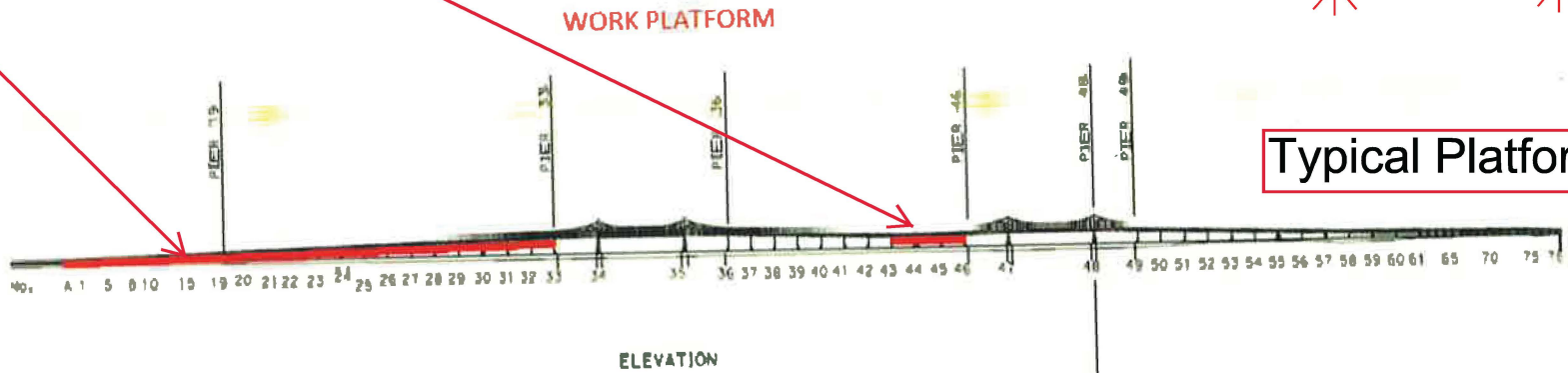
Temporary Access Platforms
Golden Gate Bridge, mile 2.5, San Francisco Bay
Revised 31 Mar 23



Four 54 ft wide temporary platforms are installed in the main span below low steel of the bridge, in relation to centerline of the span; two south of the north tower and two north of the south tower, reducing vertical clearance by no more than 14 feet. The upstream and downstream lower edges of the temporary platforms will be lighted at night with steady burning red lights visible at 2,000 yards by approaching vessels.

Painting and Structural Repairs Project
Richmond-San Rafael Bridge
Mile 13.0, San Francisco Bay

Temporary Underdeck Platforms



Typical Platform Lighting

The upstream and downstream lower edges of each temporary platform in each span are lighted at night with steady burning red lights to be seen at 2,000 yards by approaching vessels. Each platform reduces vertical clearance by no more than 3 feet.

Butte City Bridge Replacement Project Sacramento River

PIER 29

PIER 30

PIER 31

PIER 32

35'-0" TYP

TOP OF TRESTLE ELV 88.7±

BOTTOM OF STRINGER ELV 84.7±

NAVIGATION
OPENING

32'-6"±

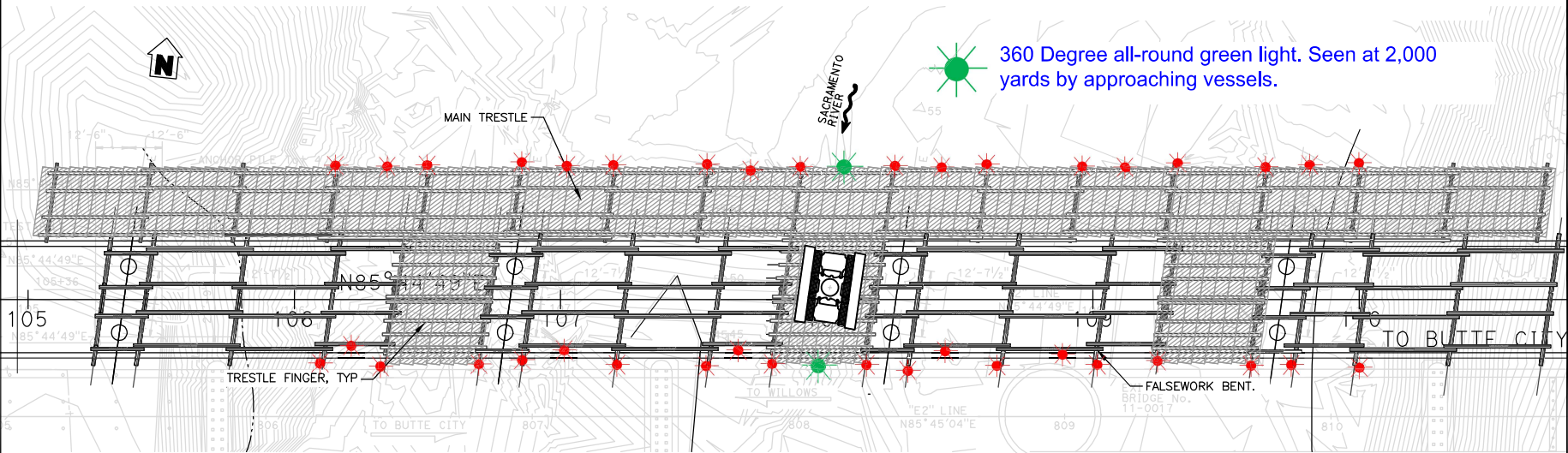
MAIN TRESTLE PROFILE
SCALE: 1:40



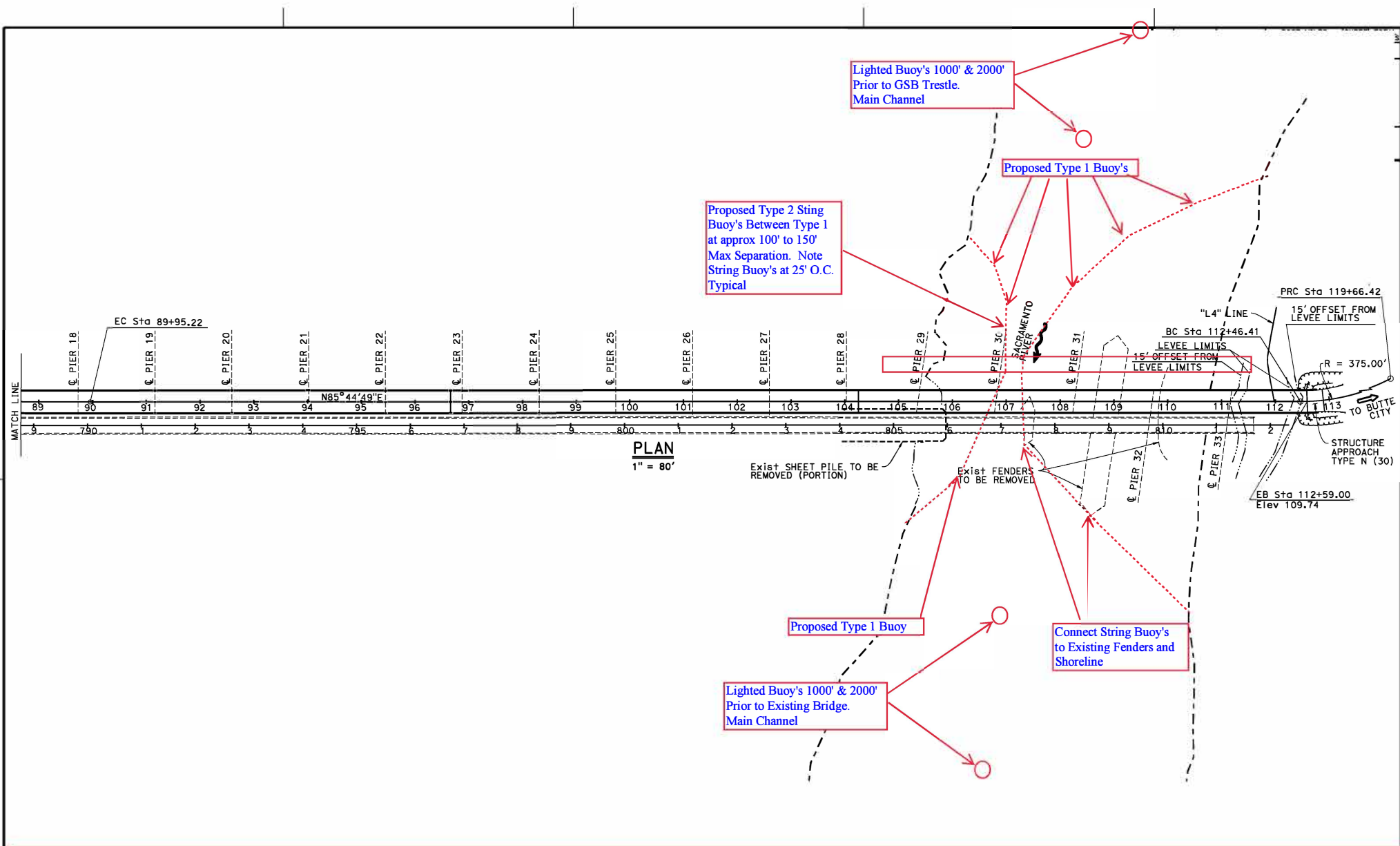
360 Degree all-round red light. Seen at 2,000 yards by approaching vessels.



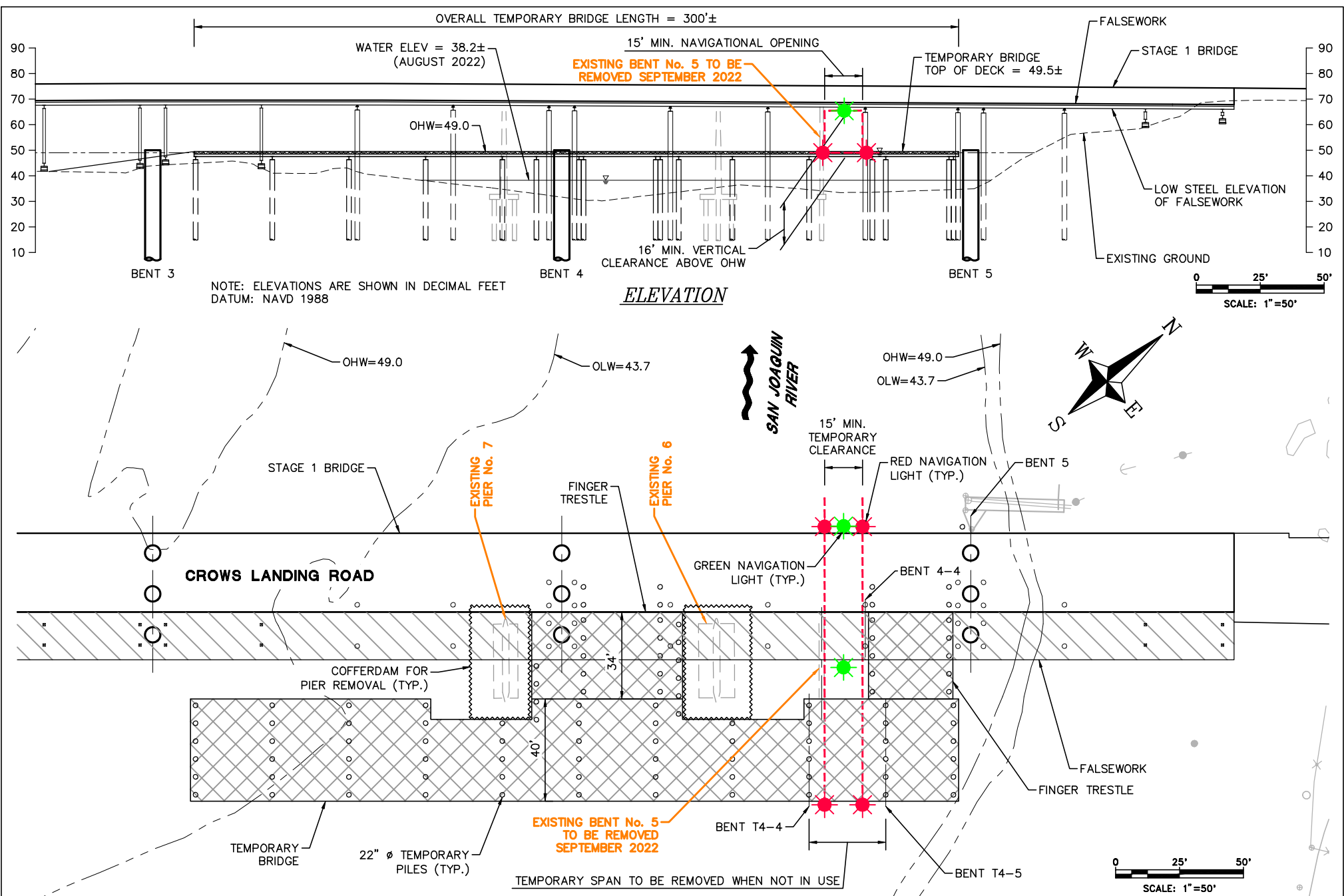
360 Degree all-round green light. Seen at 2,000 yards by approaching vessels.



The upriver and downriver ends of the trestle piles and crossbeams are lighted at night with steady burning red lights. The upriver and downriver low steel of the temporary navigation span, in the center of the river, is lighted at night with steady burning green lights, which identifies the center of the temporary navigation span.



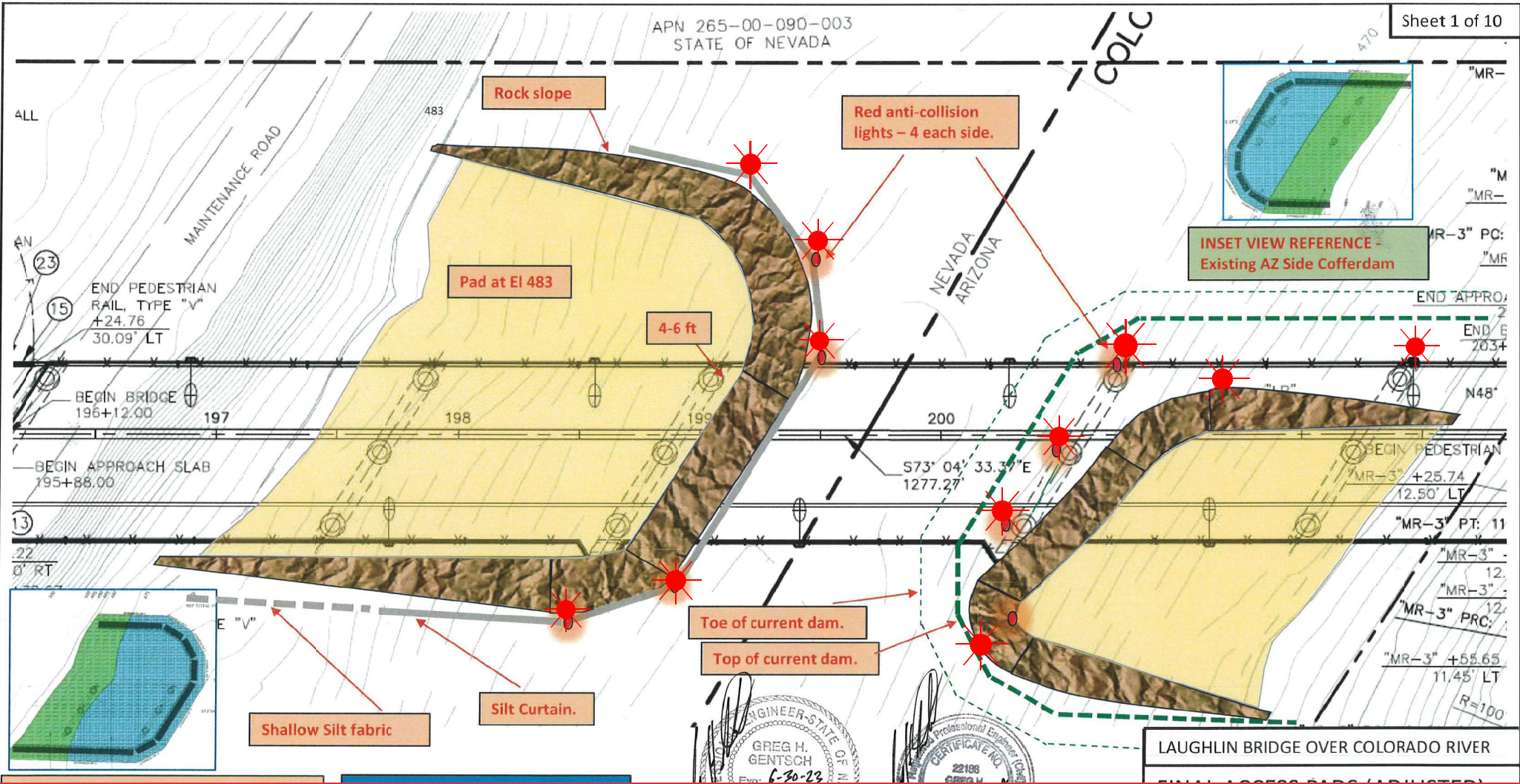
**Butte City Bridge Replacement Project, mile 169.7, Sacramento River
Proposed Buoy Line During Construction**



Temporary Navigation Lighting-Crows Landing Bridge Replacement Project - San Joaquin River

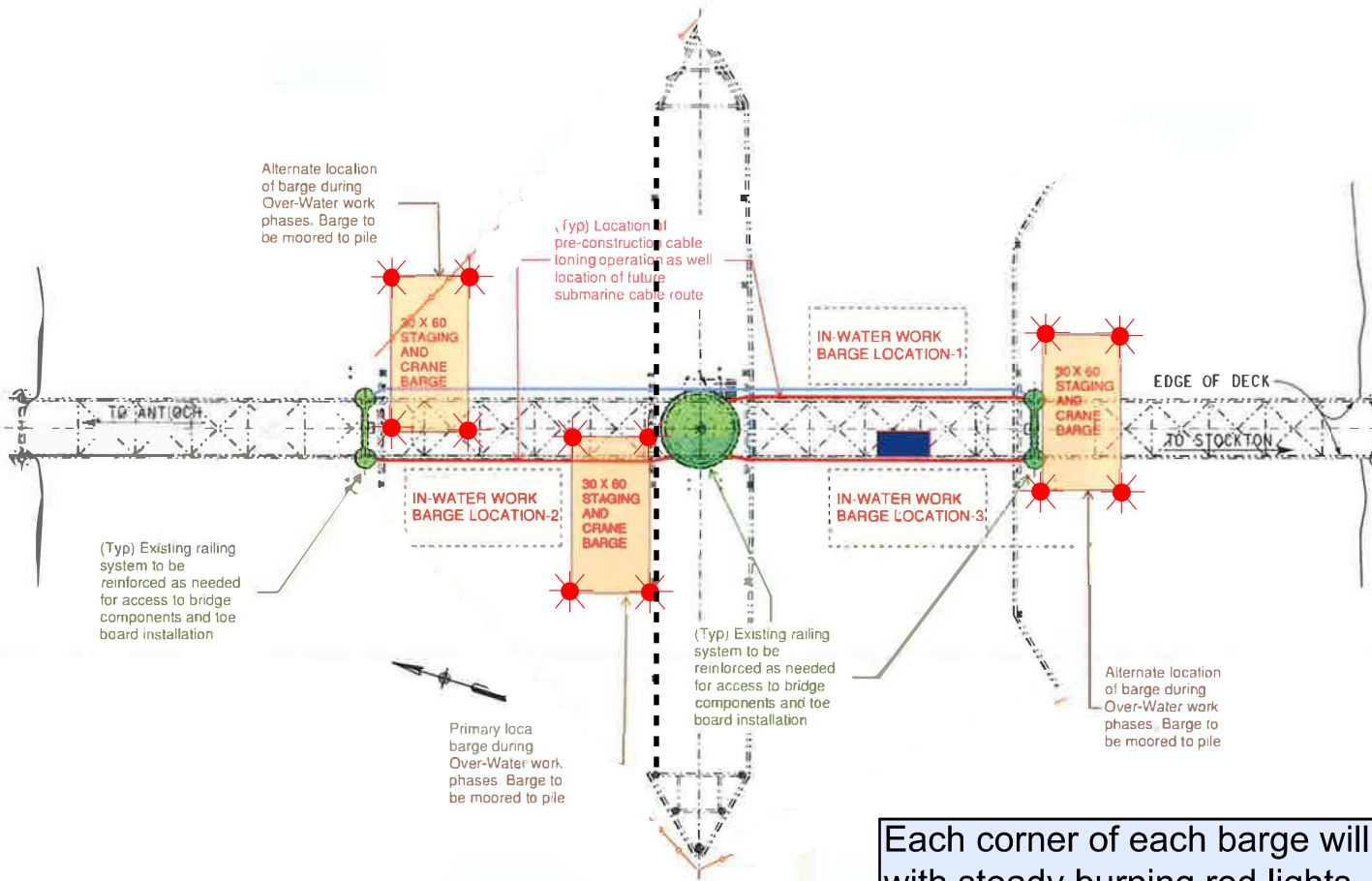
The temporary bridge, the replacement bridge and existing bridge will be lighted at night with two red lights marking the temporary navigation channel. The temporary falsework will be lighted, upriver and downriver, with green lights marking the center of the temporary navigation channel. During construction the temporary navigation channel will provide a horizontal clearance of 15 feet and a vertical clearance at Ordinary High Water of 16 feet.

**New Laughlin-Bullhead City Bridge Construction
Mile 261.6 over the Colorado River
Temporary Rock Access Pad and Pier Lighting**



Once installed, the Nevada side silt curtain will be lit at night with steady burning red lights, visible at 2,000 yards by approaching vessels. The Arizona side exposed bridge piers and upstream and downstream ends of the rock access pad will be lit at night with steady burning red lights, visible at 2,000 yards by approaching vessels. There will be approximately 117 feet of horizontal clearance from the face of the silt curtain to the face of the Arizona side pier, in the center of the river.

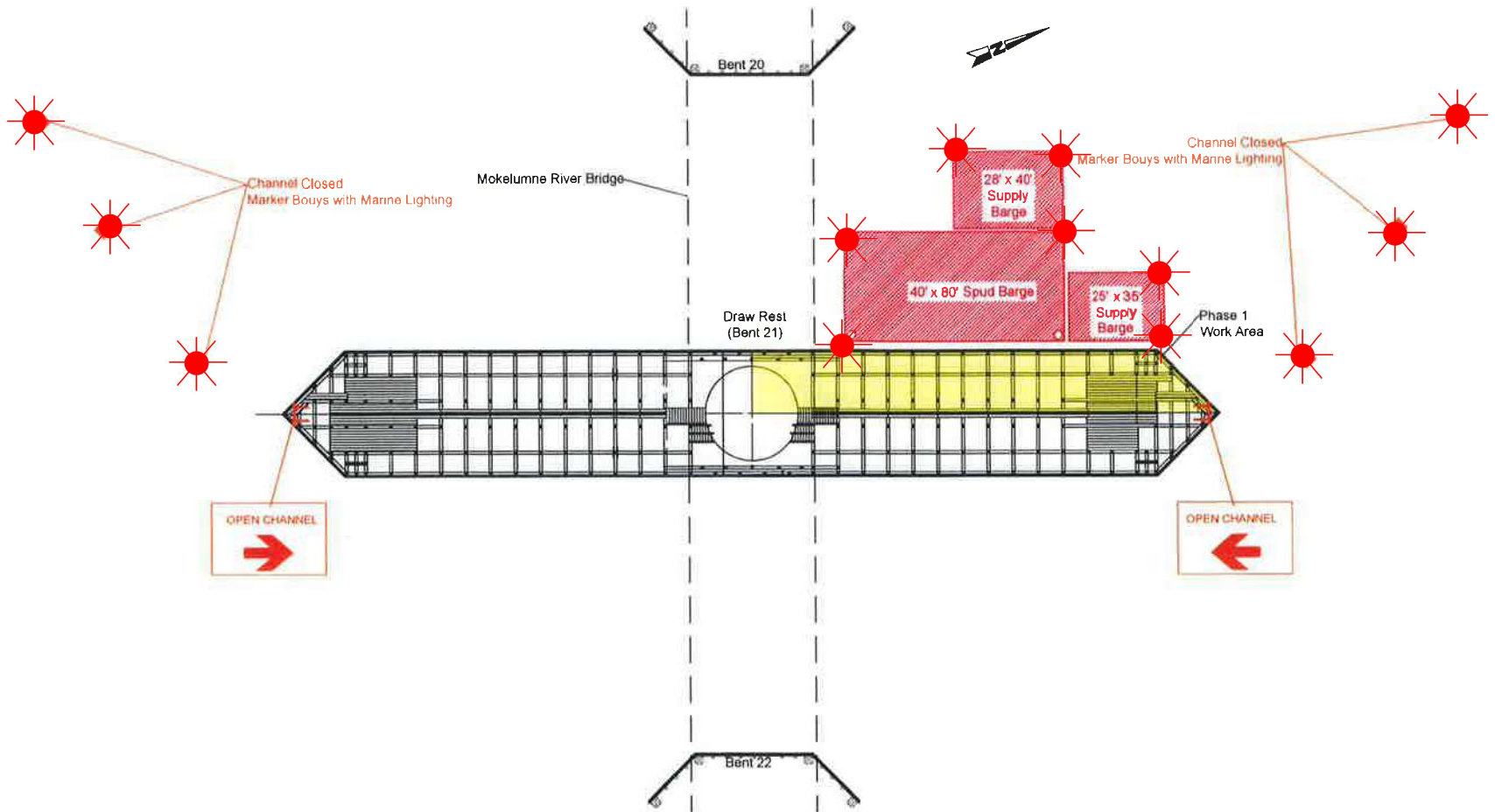
Barge Lighting Plan Highway 4 Drawbridge Mile 14.8, Old River



Each corner of each barge will be lighted at night with steady burning red lights, visible at 2,000 yards from approaching vessels.

Rehabilitation CA Route 12 Bridge, Mile 3.0, Mokelumne River

Typical Barge Lighting Diagram



Each corner of each barge is lighted with fixed red lights visible at 2,000 yards by approaching vessels. The barge configuration and bouy locations will change areas throughout the project.

RESEARCH EQUIPMENT IN WATER

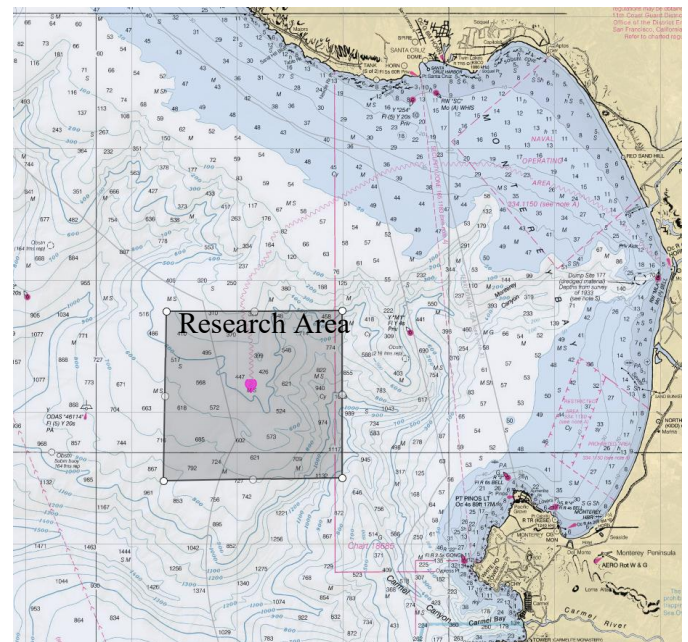
Monterey Bay
February 2023

SAILDRONE, INC. will operate an Unmanned Surface Vehicle called Saildrone conducting research in the Monterey Bay in the vicinity of position of 36° 42.7'N, 122° 11.2'W

VESSELS ARE REQUESTED TO TRANSIT THE AREA WITH CAUTION, AND REMAIN GREATER THAN 500 METERS AWAY FROM THE RESEARCH EQUIPMENT.

Saildrones are wind powered Unmanned Surface Vehicles that carry important oceanographic and fisheries acoustics research instrumentation and are controlled from shore through satellite communications.

- **Color: Orange**
- **Light: white all-round light**
- **Radar Reflector: Yes**
- **Notation: "Saildrone"**
- **Length: 23 ft & Width: 2 ft**
- **Height: 16 ft above water line**
- **Draft: 6 ft, Avg. speed: 3 kts**
- **GPS / AIS / Cameras: Yes**



SAILDRONE MISSION CONTROL

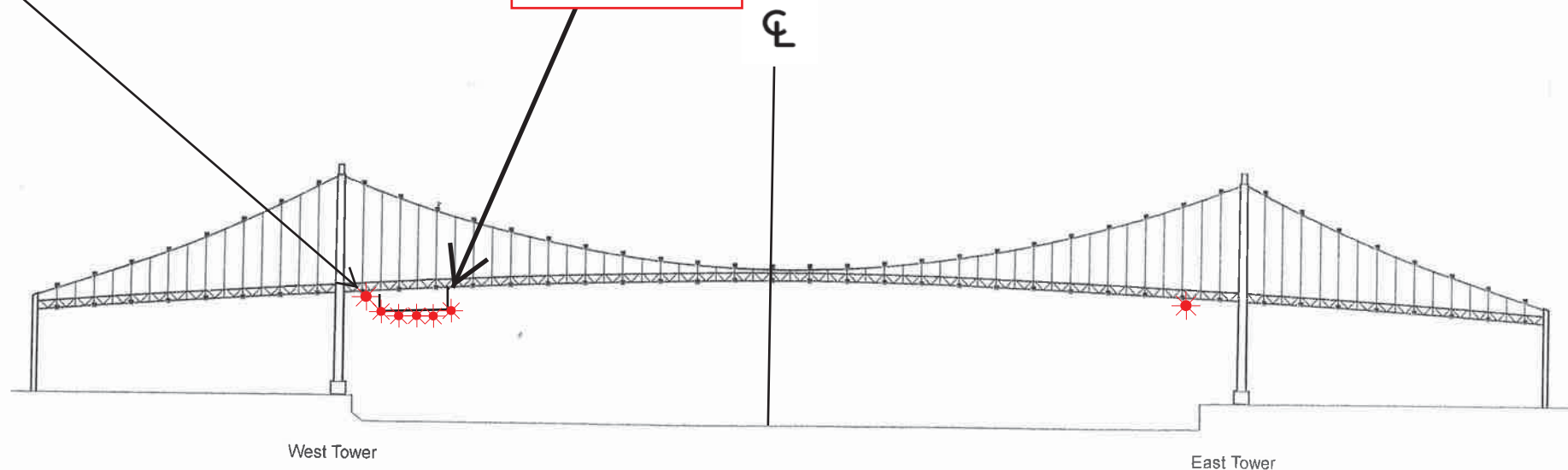
(510) 722-6070

missioncontrol@saildrone.com

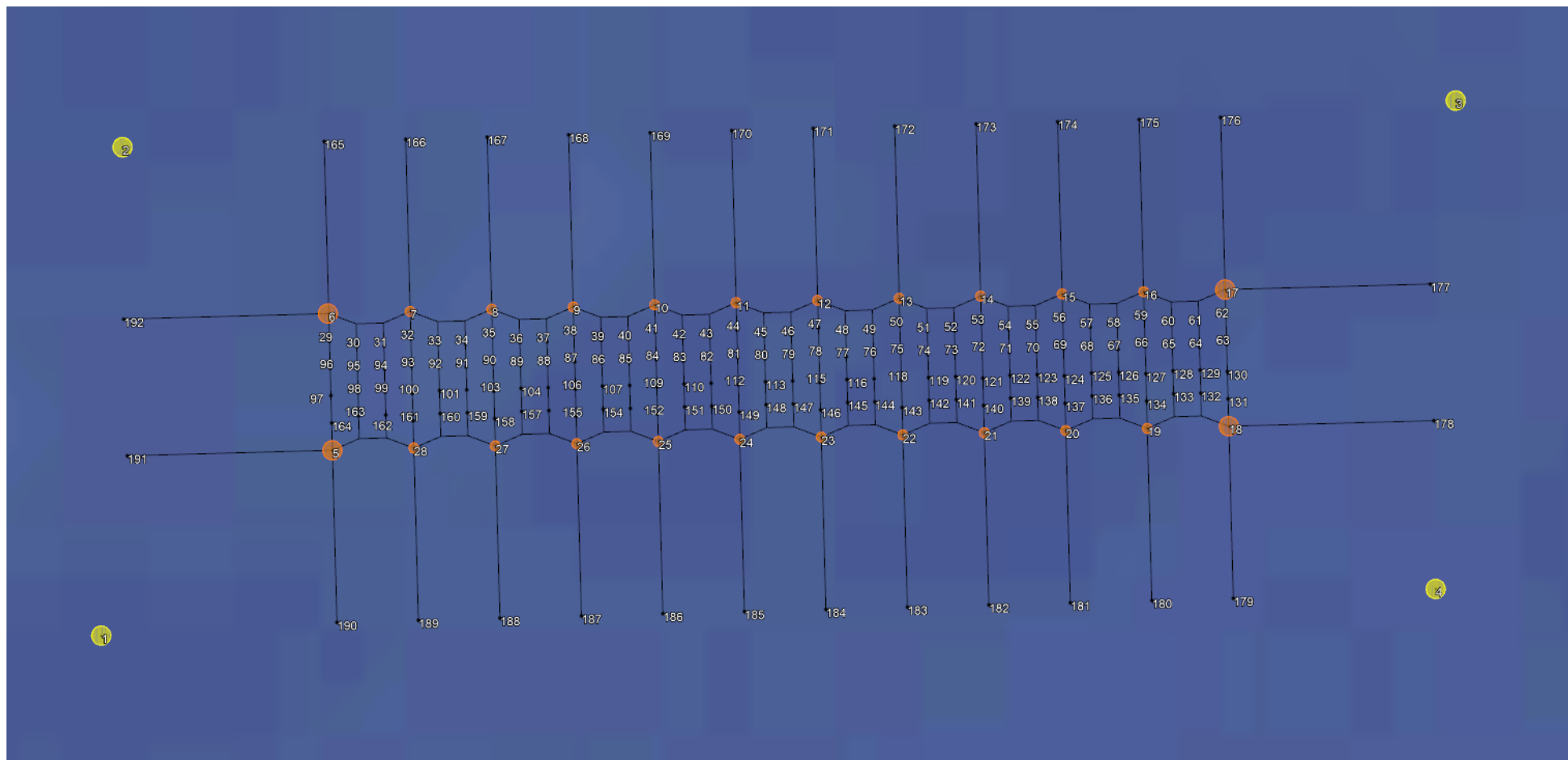
Vincent Thomas Highway Bridge
Mile 3.0
Los Angeles/Long Beach Harbor
Painting Project

West Channel Margin
Light

Below Low Steel
Platform. 5' 4"
reduction in
vertical clearance



A 180 foot long under deck temporary platform will reduce vertical clearance by 5' 4". Each corner and every 50 feet along the the upstream and downstream side of the platform will lighted at night with steady burning red lights visible at 2000 yards by approaching vessels. In a duration of 1-year the platform will progress from the western channel margin light to 250' west of the centerline of the bridge.

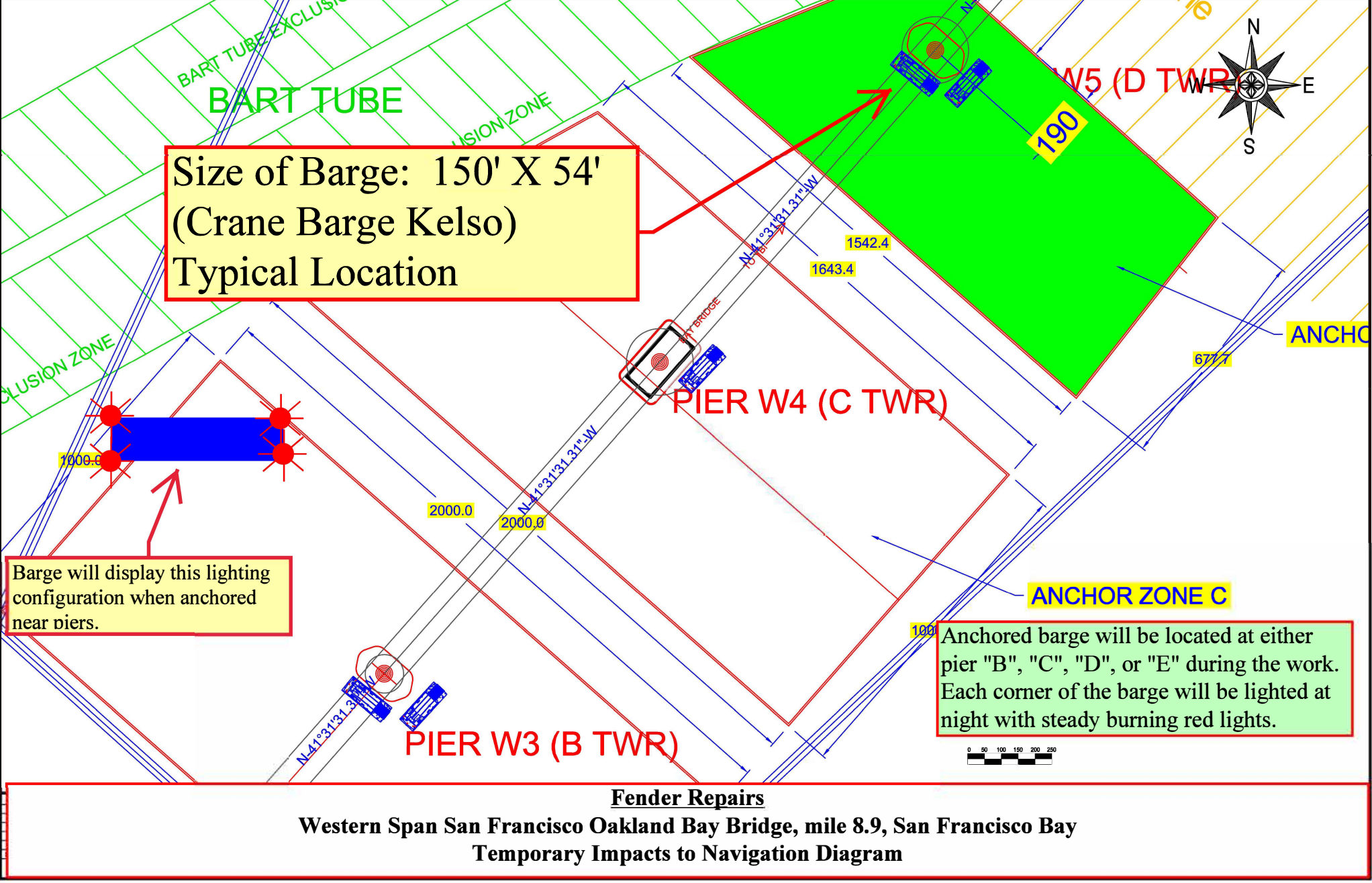


Size of Barge: 150' X 54'
(Crane Barge Kelso)
Typical Location

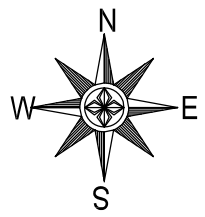
Barge will display this lighting configuration when anchored near piers.

Anchored barge will be located at either pier "B", "C", "D", or "E" during the work. Each corner of the barge will be lighted at night with steady burning red lights.

Fender Repairs
Western Span San Francisco Oakland Bay Bridge, mile 8.9, San Francisco Bay
Temporary Impacts to Navigation Diagram



Anchored barge will be located at either pier "B", "C", "D", or "E" during the work. Each corner of the barge will be lighted at night with steady burning red lights.

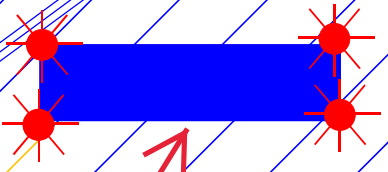


Size of Barge: 150' X 54'
(Crane Barge Kelso)
Typical Location

Shipping Lane

ANCHOR ZONE E WEST

ANCHOR ZONE E EAST



Barge will display this lighting configuration when anchored near piers.

D-E Outbound Shipping Lane
D-E Inbound Shipping Lane

ANCHOR W6 (E TWR)

285

870

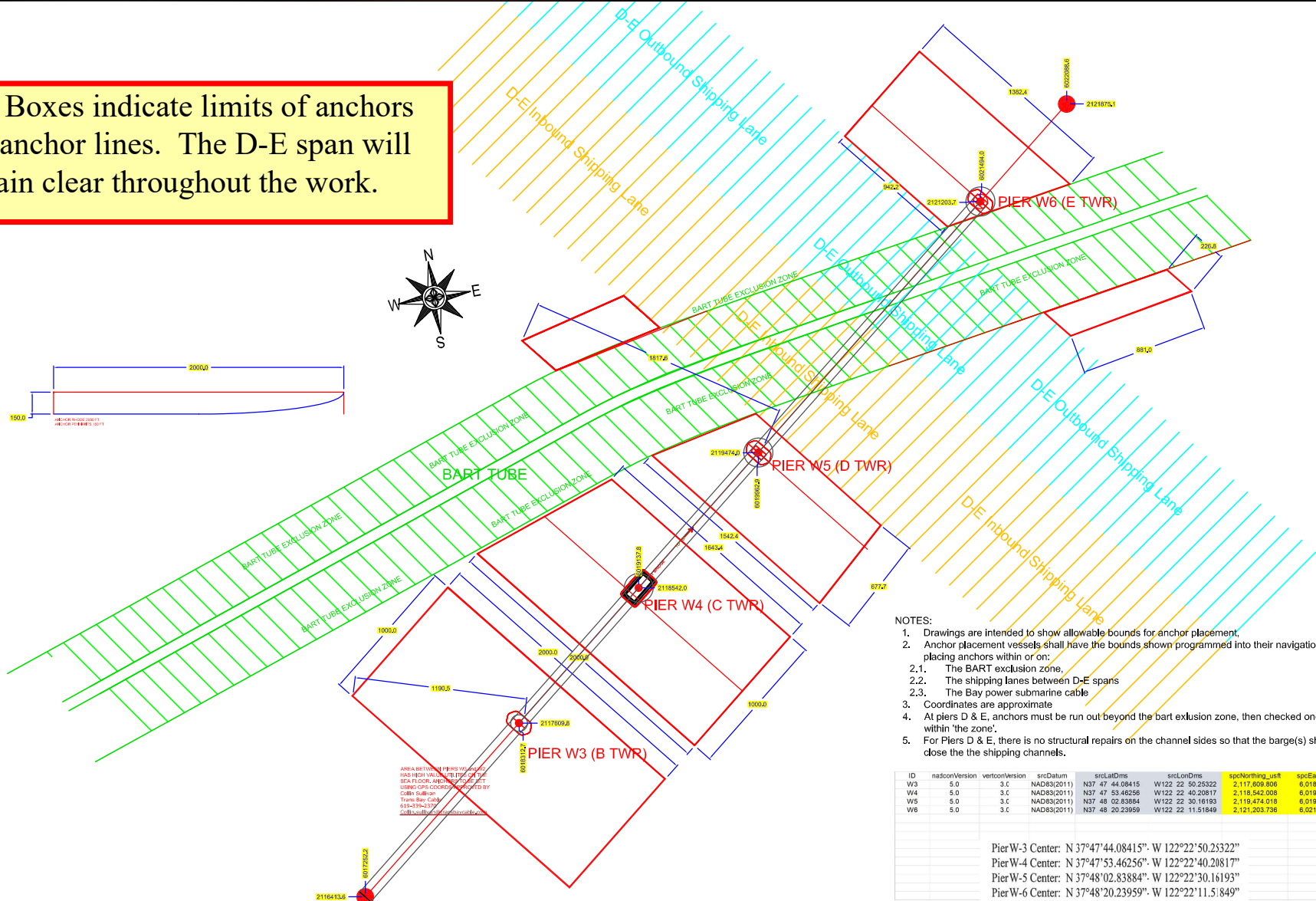
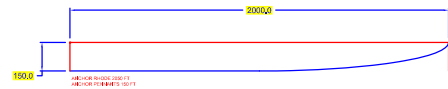
226.8

881.0
0 50 100 150 200

Fender Repairs

**Western Span San Francisco Oakland Bay Bridge, mile 8.9, San Francisco Bay
Temporary Impacts to Navigation Diagram**

Red Boxes indicate limits of anchors and anchor lines. The D-E span will remain clear throughout the work.



AREA BETWEEN PIERS W3 AND W4 HAS BEEN DESIGNATED AS THE SEA FLOOR ANCHORAGE POINT (SFA) FOR THE BRIDGE. THIS AREA IS NOT TO BE USED BY COLLS SULLIVAN. THIS SEA FLOOR ANCHORAGE POINT IS THE PROPERTY OF COLLS SULLIVAN.

NOTES:

1. Drawings are intended to show allowable bounds for anchor placement.
2. Anchor placement vessels shall have the bounds shown programmed into their navigation systems in order to avoid placing anchors within or on:
 - 2.1. The BART exclusion zone,
 - 2.2. The shipping lanes between D-E spans
 - 2.3. The Bay power submarine cable
3. Coordinates are approximate
4. At piers D & E, anchors must be run out beyond the bart exclusion zone, then checked once set to ensure that they are not within 'the zone'.
5. For Piers D & E, there is no structural repairs on the channel sides so that the barge(s) should never need to moored close the the shipping channels.

| ID | nadsOnVersion | vertconVersion | srcDatum | srcLatOrms | srcLonOrms | srcNorthing_usr1 | srcEasting_usr1 |
|----|---------------|----------------|-------------|-----------------|------------------|------------------|-----------------|
| W3 | 5.0 | 3.C | NAD83(2011) | N37 47 44.08415 | W122 22 50.25322 | 2,117,609,808 | 6,018,512,651 |
| W4 | 5.0 | 3.C | NAD83(2011) | N37 47 53.46256 | W122 22 30.20817 | 2,116,542,008 | 6,019,137,752 |
| W5 | 5.0 | 3.C | NAD83(2011) | N37 48 02.83884 | W122 22 30.16193 | 2,119,474,018 | 6,019,962,888 |
| W6 | 5.0 | 3.C | NAD83(2011) | N37 48 20.23959 | W122 22 11.51948 | 2,121,203,736 | 6,021,493,997 |

Pier-W-3 Center: N 37°47'44.08415". W 122°22'50.25322"
 Pier-W-4 Center: N 37°47'53.46256". W 122°22'40.20817"
 Pier-W-5 Center: N 37°48'02.83884". W 122°22'30.16193"
 Pier-W-6 Center: N 37°48'20.23959". W 122°22'11.51849"

Fender Repairs

Western Span San Francisco Oakland Bay Bridge, mile 8.9, San Francisco Bay

Temporary Impacts to Navigation Diagram

RESEARCH EQUIPMENT IN WATER

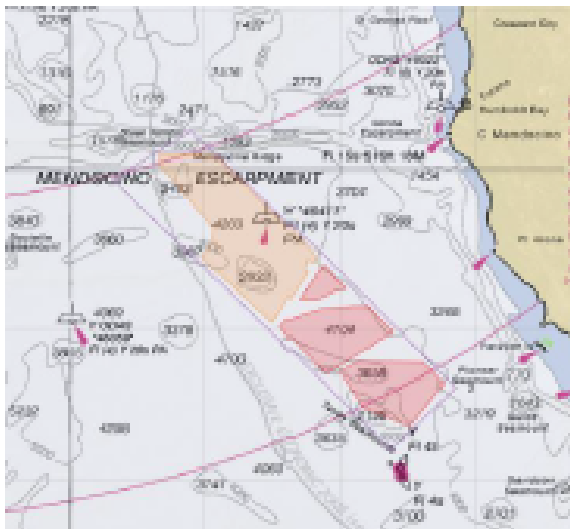
California Waters
Jan 23rd, 2023 to Feb 28th, 2023

SAILDRONE, INC. will operate one Uncrewed Surface Vehicle called “SAILDRONE SURVEYOR”, for bathymetric research along the Northern California coastline. SAILDRONE SURVEYOR will be conducting survey operations in the area listed below from the time it arrives to the area until February 28th, 2023 periodically returning to Alameda, CA for scheduled maintenance.

VESSELS ARE REQUESTED TO TRANSIT THE AREA WITH CAUTION, AND REMAIN GREATER THAN 500 METERS AWAY FROM THE RESEARCH EQUIPMENT.

Saildrone Surveyor is a primarily wind powered Uncrewed Surface Vehicle also equipped with an inboard engine. Surveyor carries oceanographic and fisheries acoustics research instrumentation and is controlled from shore through satellite communications.

- **AIS:** “SAILDRONE SURVEYOR”
- **MMSI:** 338179262
- **Color:** Orange
- **Lights:** Tricolor, Running lights/stern light
- **Radar Reflecting:** Yes



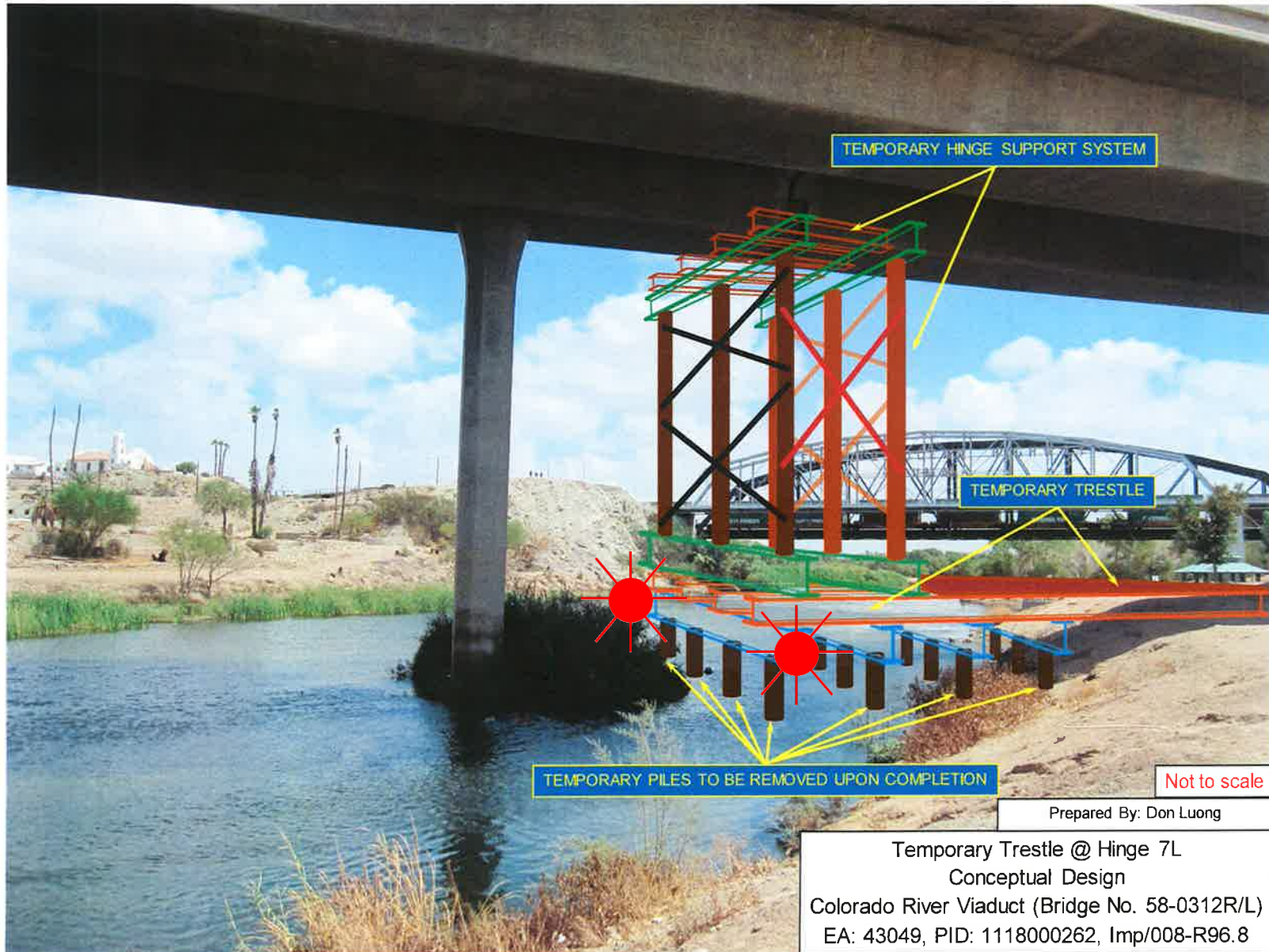
- **Length:** 22 m
- **Width:** 1.8 m
- **Height:** 14 m
- **Draft:** 3.6 m
- **Average speed:** 7 knots

SAILDRONE MISSION CONTROL
(510) 722-6070
missioncontrol@saildrone.com

Bridge Repairs

Interstate 8 Bridge, mile 30.4, Colorado River

Temporary Trestle/Falsework Lighting



Each channel ward corner of the temporary trestle/falsework is lighted at night with steady burning red lights visible at 1,000 yards by approaching vessels.