

SUPPORTING DOCUMENT: L

April 7, 2014
(Revised: August 27, 2014)

Mr. David Rocha
OC Dana Point Harbor/Project Management
24650 Dana Point Harbor Drive
Dana Point, CA 92629

Copy to: Jon Conkard and Craig Hoffman, Project Dimensions, Inc.

Subject: Dana Point Harbor Revitalization Commercial Core Project
Coastal Engineering Support Services – Wave Uprush Analysis

Dear Mr. Rocha:

Everest International Consultants, Inc. (Everest) has prepared this letter report to provide a summary of the data, method, and findings of a wave uprush analysis conducted for the Dana Point Harbor Revitalization Commercial Core Project in support of the Coastal Development Permit application. The Commercial Core Project, as shown in Figure 1, is located at the northeastern corner of the Dana Point Harbor. In the figure, the project boundary is marked with bold yellow line. Since the Dana Point Harbor is protected against ocean swells and storm waves by two rubble mound breakwaters, ocean storm waves have to enter the harbor through the harbor entrance and go around the island in the middle of the harbor before reaching the Commercial Core Project site.

The Commercial Core Project site is primarily surrounded by seawalls except at an area where there is a concrete boat launch ramp. The proposed plan for the Commercial Core Project is shown in Figure 2. As shown in the figure, most of the development for the Commercial Core Project will be on land, except for the proposed dry stack boat storage building which will have a corner of the building sitting on piles that will extend into the harbor basin. The Commercial Core Project will not make any modification to the existing seawalls; hence, this wave uprush analysis was conducted based on existing seawall conditions. In addition, this study does not include any specific coastal impact analysis for the proposed dry stack boat storage building.

The wave uprush analysis was conducted using the ACES program within the CEDAS (version 4.03) suite of programs developed by the U.S. Army Corps of Engineers (Veri-Tech, Inc., 2009) to evaluate whether wave uprush at the seawalls and the boat ramp will result in wave overtopping, and the corresponding wave overtopping rates if wave overtopping does occur. The parameters controlling the onset of wave overtopping and the overtopping rate include wave characteristics (height and period), water level and water depth in front of the seawall and boat ramp structures, as well as the structure characteristics (type and slope) and bottom slope in front of the structure.

In the following report, the data and the analyses that were used to establish the wave conditions and water levels for the wave uprush analysis are first described, followed by the findings and recommendations.

EVEREST INTERNATIONAL CONSULTANTS, INC.
444 West Ocean Boulevard, Suite 1104, Long Beach, CA 90802
TEL (562) 435-9305 • FAX (562) 435-9310

April 7, 2014 (Revised: August 27, 2014)
Mr. David Rocha
Page 2 of 15



Image Source: Google Earth Pro

Figure 1. Location Map



Source: Project Dimensions

Figure 2. Commercial Core Project Proposed Plan

April 7, 2014 (Revised: August 27, 2014)
 Mr. David Rocha
 Page 3 of 15



1. WAVE CONDITIONS

The prevailing storm wave climate at Dana Point Harbor are comprised of swell and local sea produced by distinct meteorological patterns: distant northern Pacific Ocean extratropical cyclones, eastern north Pacific Ocean tropical cyclones, extratropical cyclones of the southern Pacific Ocean, wind swell from prevailing northwesterly winds, and passing low pressure systems creating seas both from the west and from the south. The northern Pacific extratropical cyclones cause the greatest impact between November and April. Large south swell from the extratropical South Pacific and from eastern Pacific tropical hurricanes arrive from May through October (USACE 1996). One estimate of these extreme waves was made in 1986 by the USACE (1986) incorporating the very large 1982/1983 winter storm season. A later study (USACE 1996) added new wave data, as well as calculated wave statistics for two different weather populations - extratropical and tropical storms.



Figure 3. Wave Gage Locations

As part of the Dana Point Harbor Revitalization Project, Everest (2008) conducted a wave study of the Dana Point Harbor in 2008. The study utilized the extreme offshore wave statistics established by the USACE (1986, 1996) and transformed the offshore wave heights to two proposed temporary dock locations in the harbor using two different methods: (1) using the results of a physical model test conducted by the USACE (1965) to select the appropriate wave transformation coefficients to bring the offshore waves into the harbor, and (2) using a numerical model CGWAVE to propagate the offshore waves into the harbor. One of the dock locations, marked as Location A in Figure 3, is near the Commercial Core Project. The Everest (2008) study concluded that the 100-year return period wave conditions at this location has a significant wave height of 2.1 feet based on Method 1, and 2.3 feet based on Method 2; and a peak wave period of 15.5 seconds. The significant wave height is a statistical term which represents the average height of the highest one-third of waves of a given wave group.

In 2011, the US Army Engineering Research & Development Center (ERDC) and Noble Consultants, Inc., conducted a comprehensive condition survey, storm waves, circulation and sedimentation study for Dana Point Harbor. Part of the study includes an update of the prior USACE (1986, 1996) wave studies and used wave hindcast data from 1973 to 2008 to define

April 7, 2014 (Revised: August 27, 2014)
Mr. David Rocha
Page 4 of 15



the storm wave conditions outside of Dana Point Harbor, followed by the use of the CMS-Wave Model to transform the offshore waves into the harbor to determine the storm wave conditions at various locations along the west and east breakwaters. One of the locations near the east breakwater, marked as Location B in Figure 3, is just south of the Commercial Core Project near the entrance to Dana Point Harbor. The ERDC and Noble (2011) study estimated that the 100-year return period significant wave height at Location B is 2.9 ft, slightly higher than the 2.3 ft estimated by Everest for Location A. Since Location A is further into the harbor (more sheltered) than Location B, it is expected that the waves at Location A would be smaller than those at Location B which is close to the harbor entrance.

Since the Commercial Core Project site is located farther away from the harbor entrance, and part of the project site is sheltered from waves entering the harbor by breakwaters and the island in the middle of the harbor, it is expected that waves affecting this portion of the project will be smaller than those at Location A. However, there is no existing information or detailed study that has been conducted to determine the precise wave conditions at the project site. Hence, the lower of the two wave conditions estimated by Everest (2008) for Location A (i.e., a 100-year wave height of 2.1 ft and wave period of 15.5 second) was used for this study.

2. WATER LEVELS

The water level at the project location is affected by the tide, wind setup, tsunami, and potential future sea-level rise (SLR).

TIDES

Tides along southern California coast are characterized as mixed, semidiurnal with two daily highs and two daily lows. The closest NOAA tide stations for the Dana Point Harbor are at the City of Newport Beach and the City of Oceanside. The tidal statistics at these two locations are almost the same. For this study, tidal datums at the NOAA tide gage at the Newport Bay Entrance (9410580) were used to define the tidal conditions in Dana Point Harbor. Tidal datums from the 1983-2001 tidal epoch for the Newport Bay Entrance are summarized in Table 1.

April 7, 2014 (Revised: August 27, 2014)
 Mr. David Rocha
 Page 5 of 15



Table I. Tidal Datums for Newport Bay Entrance

TIDAL DATUM	ELEVATION (FT, MLLW)
Highest Observed Water Level (1/28/83)	7.667
Mean Higher High Water (MHHW)	5.410
Mean High Water (MHW)	4.672
Mean Sea Level (MSL)	2.772
Mean Low Water (MLW)	0.915
Mean Lower Low Water (MLLW)	0.000
Lowest Observed Water Level (1/20/88)	-2.352

Source: NOAA 2003

WIND SETUP

Wind setup is the rise in water level on the leeward side of a water body caused by wind stress on the surface. For the Commercial Core Project location, wind setup will mainly be caused by wind coming from the southerly direction. Wind data collected from a recording gage at the Ocean Institute for the earlier Everest (2008) study was used for this study to evaluate whether wind setup needs to be included in the wave uprush analyses.

The Ocean Institute data includes a wind record every 5 seconds from 2004 to 2006. The duration of these data allows for a good understanding of the normal wind conditions at the Dana Point Harbor.

Figure 4 shows a wind rose constructed based on the 2005 wind data. As shown in the figure, most of the time (over 63% of the time) the wind is calm (less than 5 knots), and approximately 10% of the winds come from the south with wind

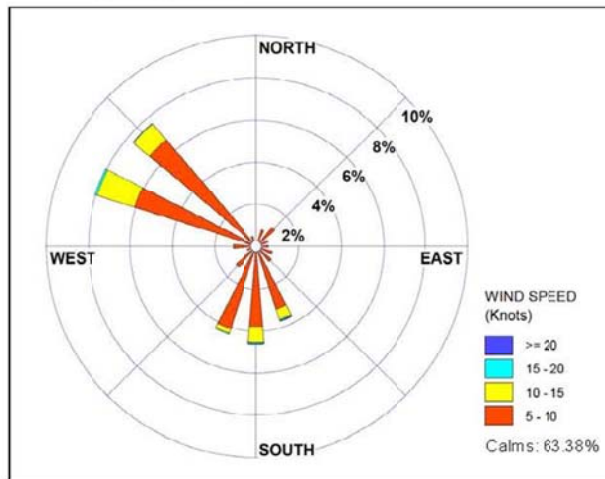


Figure 4. Wind Rose – Ocean Institute, Dana Point

April 7, 2014 (Revised: August 27, 2014)
Mr. David Rocha
Page 6 of 15



speed between 5 and 10 knots. This low wind speed and the short fetch (a.k.a. the distance over water the wind blows) would result in insignificant wind setup at the project location.

TSUNAMI

The 2010 Chilean and 2011 Japanese tsunamis were the most significant tsunamis to hit California since the 1964 Alaska tsunami. The 2010 Chilean tsunami was generated by a magnitude 8.8 earthquake on February 26, 2010 at the Maule region near central Chile, and the tsunami subsequently reached the Los Angeles region around noon time on February 27, 2010. On March 11, 2011, a magnitude 9.0 earthquake struck the east coast of the Tohoku region in Japan, generated a large tsunami that arrived the Los Angeles region at around 8:40 am on March 11, 2011. A recent study by Wilson et al. (2011) provided a comprehensive summary of measured (based on tide gage data) or observed (based on eyewitness reports) maximum tsunami amplitudes at various locations along the California coastline including the Dana Point Harbor. For the Dana Point Harbor, the observed maximum tsunami amplitude for the 2010 Chilean tsunami is between 1.6 to 2.0 ft, and for the 2011 Japanese tsunami is 2 ft. However, the authors of the study cautioned that eyewitness observations can sometimes be exaggerated.

The NOAA tide data collected at the La Jolla Scripps Pier and the Los Angeles (LA) outer harbor gages for these two tsunami events were downloaded and analyzed for this study. These two NOAA gages are the closest to Dana Point Harbor providing measured data for these two tsunami events. Figure 5 shows the marigrams at La Jolla and LA outer harbor for the 2010 Chilean event. In the figure, the blue line shows the measured tide and the green line shows the predicted tide. The difference between the measured and predicted tide (shown as the red line in the figure) represents the tsunami wave. It can be seen that the maximum measured tsunami amplitude is approximately 0.7 ft at La Jolla, and 1.2 ft at LA outer harbor. Similar plots for the 2011 Japanese tsunami are shown in Figure 6. For this tsunami event, the maximum tsunami amplitudes at La Jolla are about 0.8 ft, and 1.2 ft at LA outer harbor.

The tsunami amplitudes off the shoreline of Dana Point Harbor is likely between those measured at La Jolla and LA outer harbor (i.e. somewhat around 1 ft for both the 2010 Chilean event and the 2011 Japanese event). These estimated tsunami amplitudes are only about half of those observed at Dana Point Harbor based on eyewitness report. Since Wilson et al. (2011) cautioned that eyewitness report may sometimes be exaggerated; for this study, tsunami amplitudes of 1 ft and 2 ft were used to cover the likely range of tsunami effect to wave uprush at the project location.

April 7, 2014 (Revised: August 27, 2014)
Mr. David Rocha
Page 7 of 15

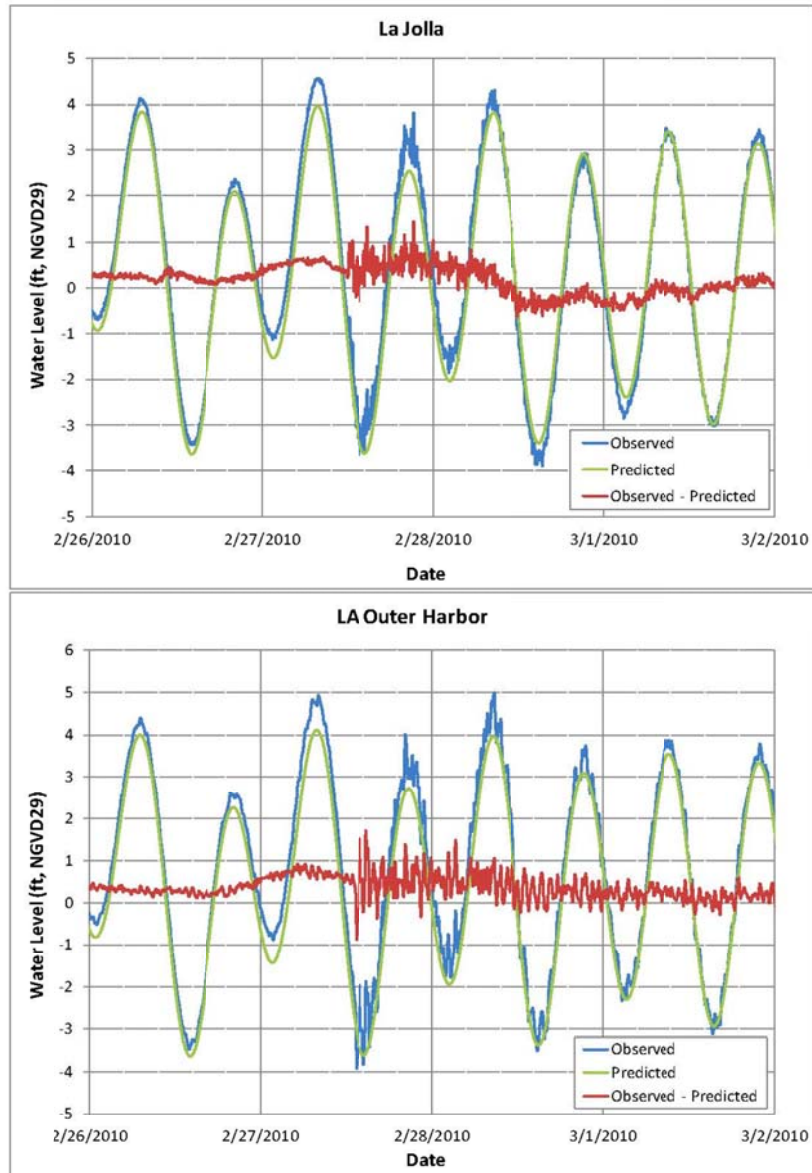


Figure 5. Marigrams for La Jolla and LA Outer Harbor during the February 27, 2010 Chilean Tsunami

April 7, 2014 (Revised: August 27, 2014)
Mr. David Rocha
Page 8 of 15

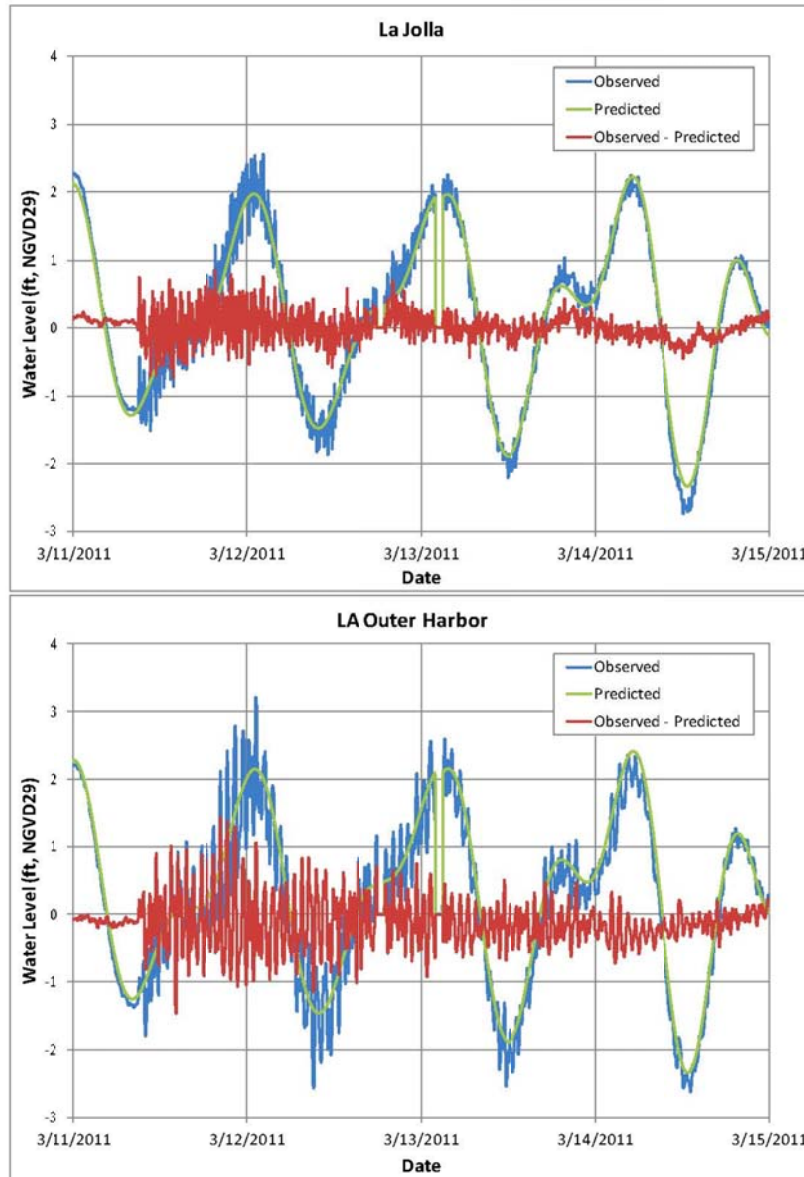


Figure 6. Marigrams for La Jolla and LA Outer Harbor during the March 11, 2011 Japanese Tsunami

April 7, 2014 (Revised: August 27, 2014)
 Mr. David Rocha
 Page 9 of 15



SEA-LEVEL RISE

On October 14, 2013, the California Coastal Commission (CCC) released the Draft Sea-Level Rise Policy Guidance for public comment (CCC, 2013). The draft guidance document was prepared by CCC staff to provide a theoretical framework for assessment of sea-level rise in Local Coastal Programs and Coastal Development Permits. The draft guidance policies recognize the science on sea-level rise is constantly evolving, but at the time of the report's publication, the best available science on sea-level rise in California is the 2012 *National Research Council (NRC) Report, Sea-Level Rise for the Coasts of California, Oregon and Washington: Past, Present and Future* (NRC, 2012). The NRC-recommended sea-level rise projections for Southern California (south of Cape Mendocino) are summarized in Table 2. The CCC guidance also recognizes the scientific uncertainty associated with sea-level rise projections, and recommends that analyses for coastal hazards should be conducted for both the low and high bounds of the ranges shown in the table.

Table 2. Potential Sea Level Rise Ranges Using Year 2000 as the Baseline for Southern California (NRC Report 2012)

YEAR	RANGE OF SEA LEVEL RISE (INCHES)
2030	1.6 – 12
2050	5 – 24
2100	16.5 – 66

Section 8.6.3.4 of the Dana Point Harbor Revitalization Plan and District Regulations states that wave uprush analyses shall consider long-term (75 years) projection for sea-level rise. The Commercial Core Project is scheduled to start construction in Year 2015; hence sea-level rise projection for Year 2090 was estimated. Sea-level rise projection for Year 2060 was also estimated and used for the wave uprush analysis. The CCC (2013) draft guidance policies provide equations for estimating sea-level projections for years not within a few years of those shown in Table 2. Based on the CCC equations, the sea-level rise projections for Year 2060 are between 0.53 and 2.57 feet; and for Year 2090, between 1.28 and 4.67 ft. The CCC guidance also states that since the mean sea level in California has remained relative constant in the past 15 years, there is no need to adjust for sea-level rise for projects with start dates prior to about 2015 or 2020.

3. WAVE OVERTOPPING

As mentioned earlier, the wave uprush analysis for this study was conducted using the ACES program to determine whether wave overtopping will occur at the project location. Based on the

April 7, 2014 (Revised: August 21, 2014)
Mr. David Rocha
Page 10 of 15



properties of the seawall and boat ramp structures along the perimeters of the Commercial Core Project, the analysis was conducted for three different structure types – two types of seawalls and the boat launch ramp. The locations and pictures for these two seawall types and the boat ramp are shown in Figure 7 and Figure 8, respectively.

As shown in Figure 8, Type 1 Seawall has a vertical concrete surface near the top, and sloping ripraps at the bottom. While Type 2 Seawall has a similar vertical concrete top portion, it has a sloping concrete apron near the bottom instead of ripraps. Based on the survey data, the Type 1 and Type 2 seawalls have similar crest elevations of between 9.8 to 10 ft (MLLW) and also similar toe elevations at approximately -7 ft (MLLW). However, the rough ripraps for Type 1 and smooth concrete apron for Type 2 would result in different wave uprush under the same wave and water level conditions. Hence, wave uprush analyses for these two seawall types were analyzed separately. For the uprush analyses, a crest elevation of 9.9 ft (MLLW) was used for both the Type 1 and Type 2 Seawalls. As shown in Figure 8, the boat ramp has a smooth concrete surface with a very gentle slope. Based on the design drawings, the boat ramp has a similar crest elevation (approximately 10 Ft, MLLW) as the seawalls but with a slightly deeper toe (at approximately -8 ft, MLLW).



Figure 7. Locations for Type 1 and Type 2 Seawalls and Boat Ramp

April 7, 2014 (Revised: August 27, 2014)
Mr. David Rocha
Page 11 of 15



a. Type 1 Seawall



b. Type 2 Seawall



c. Boat Ramp

Figure 8. Site Photographs

April 7, 2014 (Revised: August 27, 2014)
Mr. David Rocha
Page 12 of 15



Section 8.6.3.4 of the Dana Point Harbor Revitalization Plan and District Regulations states that the following conditions shall be considered for a wave uprush study: high tide conditions combined with long-term (75 years) projection for sea-level rise and 100-year storm event. A 100-year storm event has a one percent chance of occurring in any given year, or on the average will occur once in every 100 years. For this study, the MHHW was used to represent the high tide conditions. Statistically, the MHHW represents a water level that is higher than about 95 percent of all the water levels in a 19-year tidal epoch. In summary, wave uprush analyses for the three types of structures at the Commercial Core Project were conducted using the 100-year storm wave conditions (significant wave height of 2.1 ft, peak wave period of 15.5 sec) for the following conditions: (1) MHHW for Year 2015, (2) the effects of adding a 1-ft and 2-ft tsunamis, (3) the effects of projected lower bound (0.53 ft), moderate (1.34 ft) and higher bound (2.57 ft) sea-level rise in Year 2060, and (4) the effects of projected lower bound (1.28 ft), moderate (2.59 ft) and upper bound (4.67 ft) sea-level rise in Year 2090. The results of the uprush analyses are summarized in Table 3.

4. SUMMARY OF FINDINGS

1. At 2015, overtopping of the seawalls and boat ramp will occur during high tide (MHHW) and a 100-year storm event.
2. For the same water level and wave conditions, Type 1 Seawall with ripraps will have less overtopping compared with the Type 2 Seawall with a smooth concrete apron.
3. For the same water level and wave conditions, overtopping at the boat ramp with a gentle slope will be higher than those at the seawalls.
4. As expected, including the effect of a 1-ft or 2-ft tsunami event to the water levels during a 100-year storm event will lead to substantial increase in overtopping at the seawalls and the boat ramp. For example, at MHHW, including the effect of a 1-ft tsunami will increase overtopping rates for Type 1 Seawall from 0.008 ft³/sec/ft to 0.036 ft³/sec/ft, i.e. by a factor of 4.5.
5. For Year 2060, with the projected sea-level rise, there will be substantial increase in wave overtopping at the seawalls and the boat ramps as compared to Year 2015. For example, at MHHW, for a moderate projection of sea-level rise of 1.34 ft, wave overtopping for Type 1 Seawall will increase from 0.008 ft³/sec/ft to 0.058 ft³/sec/ft, i.e. by a factor of 7.3.
6. For Year 2090, with the projections of sea-level rise of 4.67 ft (higher bound), the area will be inundated (i.e. water elevation higher than the crest elevation of the structures) during MHHW.
7. For Year 2090, with a moderate projection of sea-level rise of 2.59 ft, there will be substantial increase in wave overtopping at the seawalls and the boat ramp as compared to Year 2015. For example, at MHHW, wave overtopping for Type 1 Seawall will increase from 0.008 ft³/sec/ft to 0.301 ft³/sec/ft, i.e. by a factor of 37.6.

April 7, 2014 (Revised: August 27, 2014)
 Mr. David Rocha
 Page 13 of 15



Table 3. Estimated Overtopping Rates during a 100-year Storm Wave Event for Types 1 and 2 Seawalls and Boat Ramp at the Commercial Core Project Location

CONDITION	WATER LEVEL (FT, MLLW)	STRUCTURE OVERTOPPED BY WAVE?			WAVE OVERTOPPING RATE (CUBIC FT PER SEC PER LINEAR FT)		
		TYPE 1 SEAWALL	TYPE 2 SEAWALL	BOAT RAMP	TYPE 1 SEAWALL	TYPE 2 SEAWALL	BOAT RAMP
2015 MHHW	5.41	yes	yes	yes	0.008	0.026	0.183
2015 MHHW + 1-ft Tsunami	6.41	yes	yes	yes	0.036	0.077	0.331
2015 MHHW + 2-ft Tsunami	7.41	yes	yes	yes	0.141	0.219	0.589
2060 MHHW (with 0.53 ft SLR - Low)	5.94	yes	yes	yes	0.018	0.046	0.251
2060 MHHW (with 1.34 ft SLR - Moderate)	6.75	yes	yes	yes	0.058	0.110	0.403
2060 MHHW (with 2.57 ft SLR - High)	7.98	yes	yes	yes	0.293	0.395	0.816
2090 MHHW (with 1.28 ft SLR - Low)	6.69	yes	yes	yes	0.053	0.103	0.389
2090 MHHW (with 2.59 ft SLR - Moderate)	8.00	yes	yes	yes	0.301	0.403	0.825
2090 MHHW (with 4.67 ft SLR - High)	10.02	Inundated*	Inundated	Inundated	N/A	N/A	N/A

* Water level higher than crest elevation of structure

N/A = not applicable

April 7, 2014 (Revised: August 27, 2014)
Mr. David Rocha
Page 14 of 15



5. RECOMMENDATIONS

The 100-year storm wave condition used for this study was estimated based on results of prior studies. The closest location where wave conditions were predicted by the prior studies is at a location south of the Commercial Core Project site (shown as Location A in Figure 3). Wave heights at the Commercial Core Project site are likely to be smaller than those at Location A; hence, the estimated wave overtopping rates shown in Table 3 are conservative. If more accurate prediction of wave overtopping is needed due to the adoption of regulatory standards, a detailed wave model study may be needed to further define the wave conditions at the Commercial Core Project location.

As mentioned earlier, this study only focuses on the wave uprush of the seawalls and the boat ramp of the Commercial Core Project during a 100-year storm event and under the influence of a 1-ft and 2-ft tsunami, a specific coastal impact study may be needed for the proposed dry stack boat storage building. Wave and current loadings on the piles of the building during a 100-year storm and tsunami conditions should be considered in the design of the piles. Potential wave and current induced scouring around the piles should also be evaluated and incorporated in the design.

The incorporation of sea level rise for this study follows the California Coastal Commission's Draft Sea-Level Rise Policy Guidance parameters; this study should be updated at such time as regulatory requirements are adopted by state and/or Federal agencies.

6. CLOSURE

We have completed the wave uprush analyses for the Commercial Core Project at the Dana Point Harbor. Please feel free to contact me if you have any questions or comments about this report.

Sincerely,
Everest International Consultants, Inc.

A handwritten signature in black ink, appearing to read "Ying Poon".

Ying Poon, P.E., D.Sc.
Vice President/Principal Engineer

April 7, 2014 (Revised: August 27, 2014)
Mr. David Rocha
Page 15 of 15



REFERENCES

California Coastal Commission (CCC), 2013. Draft Sea-Level Rise Policy Guidance. Public Draft Version.

ERDC and Nobles (US Army Engineering Research & Development Center and Noble Consultants, Inc.), 2011. Comprehensive Condition Survey and Storm Waves, Circulation, and Sedimentation Study, Dana Point Harbor, California. Draft Report prepared for the US Army Corps of Engineers, Los Angeles District, March 2011.

Everest International Consultants, Inc., 2008. Dana Point Harbor Revitalization Coastal Engineering Services – Progress Report. Prepared for URS/Cash & Associates, March 18, 2008.

National Research Council (NRC), 2012. Sea-Level Rise for the Coasts of California, Oregon and Washington: Past, Present and Future.

USACE 1965. Design Memorandum No. 1, General Design for Dana Point Harbor, Dana Point, California. September 1965.

USACE 1986. Lessons Learned Study, Dana Point Harbor, Dana Point, California. Los Angeles District, February 1986.

USACE 1996. Coast of California Storm and Tidal Wave Study, South Coast Region, Orange County, Nearshore Hydrodynamic Factors and Wave Study of the Orange County Coast. Final Report. Report 96-3, January 1996.

Veri-Tech Inc. 2010. Automated Coastal Engineering System (ACES) Version 4.03, Coastal Engineering Design & Analysis System (CEDAS) Version 4.0.

Wilson, R. I., A.R. Admire, J.C. Borrero, L.A. Dengler, M.R. Legg, P. Lynett, T.P. McCrink, K.M. Miller, A. Ritchie, K. Sterling, and P.M. Whitmore, 2012. Observations and Impacts from the 2010 Chilean and 2011 Japanese Tsunamis in California (USA). Proc. Appl. Geophys. 170 (2013), 1127-1147.

EXHIBIT: 1

EXHIBIT 1



**DANA POINT HARBOR REVITALIZATION
COMMERCIAL CORE PROJECT**

Illustrative Development Plan

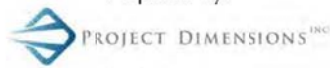
EXHIBIT: 2

EXHIBIT 2

DANA POINT HARBOR REVITALIZATION

**DAY USE / BOAT LAUNCH RAMP PARKING
SUMMER WEEKEND & HOLIDAY
UTILIZATION REPORT**

Prepared By:



4 Park Plaza, Suite 700
Irvine, CA 92614

Prepared For:



OC DANA POINT HARBOR
24650 Dana Point Harbor Drive
Dana Point, CA 92629



October 2014

**DANA POINT HARBOR REVITALIZATION PLAN
Day Use / Boat Launch Ramp Parking
Summer Weekend & Holiday
Utilization Report**

Table of Contents

<u>Section</u>	<u>Page</u>
Introduction	1
Data Analyzed	1
Conclusion	3

<u>List of Exhibits</u>	<u>Page</u>
Exhibit A	4
Exhibit B.1 – Personal Water Craft (PWC)	5
Exhibit B.2 – Single Axle	6
Exhibit B.3 – Double Axle	7
Exhibit B.4 – Triple Axle	8
Exhibit B.5 – Sailboat	9

<u>List of Reference Data</u>	<u>Page</u>
Exhibit C - Boat Launch Ramp Parking – Utilization 2010 – 2014	10 - 74
Exhibit D - Embarcadero Gate Count Data – 2010 – 2014	75 - 93

Introduction

The layout of the Dana Point Harbor Boat Launch Ramp is proposed to be modified as part of the Dana Point Harbor Revitalization – Commercial Core Project.

Policies in the certified Dana Point Harbor Revitalization Plan & District Regulations (Local Coastal Program - LCP) require that *“there shall be no net loss of the existing 334 vehicle with trailer parking spaces. The existing vehicle with trailer parking spaces shall be reconfigured such that spaces are maximized and meet the minimum California Department of Boating and Waterways (DBW) guidelines of 10 x 40 feet to the greatest extent feasible while taking into consideration the demand for larger and smaller spaces. An adequate amount of larger and smaller vehicle with trailer parking spaces shall also be provided for the type of tow vehicles and vessels that use the launch ramp facility as determined through the Coastal Development Permit process”*.

As mentioned above, the required number of launch ramp spaces, per the Local Coastal Program (LCP) is 334. The proposed launch ramp parking design for the Dana Point Harbor Revitalization, Commercial Core Project has 336 spaces. These 336 spaces are made up of a variety of lengths to accommodate different size vehicles with trailers.

The proposed lengths, and the number of spaces, are as follows:

- 30' = 14 (4%)
- 35' = 8 (2%)
- 40' = 57 (17%)
- 45' = 195 (58%)
- 50' = 62 (19%)

94% of these space sizes meet or exceed the DBW guidelines mentioned above. Some smaller spaces (30 & 35 feet) are provided for vehicles with Personal Water Craft (PWC) trailers.

The largest single space proposed is 50 feet in length. However, in order to accommodate larger trailers, 212 (63%) of the 334 spaces are positioned in line with adjacent spaces, creating “pull through spaces” ranging in size from 60 feet to 100 feet in length, with the majority of these spaces being 90 feet (two 45 foot spaces end to end).

Data Analyzed

OC Dana Point Harbor has been tracking the paid weekend (Friday, Saturday, Sunday & Holiday) entries to the launch ramp parking area since 2010.

Entries are tracked in the following categories:

- Personal Water Craft (PWC) Jet Ski / Sea Doo

Dana Point Harbor Revitalization
Day Use / Boat Launch Ramp Parking Summer Weekend & Holiday Utilization Report

2

- Single Axle
- Double Axle
- Triple Axle
- Sailboats

This data, "Embarcadero Marina Entry Counts" can be found in Exhibit C of this report.

Project Dimensions, Inc (PDI) has analyzed the summer weekend and holiday data collected, for the peak season of July, August and September over the five-year period of 2010 – 2014, in order to determine an appropriate mix of space sizes to adequately meet demand.

The highest number of 2010 to 2014 summer weekend and holiday paid launch ramp entries in a single 24-hour period was 280, which occurred on Sunday July 3rd, 2011. This is one of only 9 days in the five-year period analyzed, which had over 200 paid launch ramp entries.

On any given weekend day, the average type and length (including the vehicle & trailer) of paid launch ramp entry, is approximately as follows:

- | | | |
|---------------|--------------|-----|
| - PWC | (29' to 35') | 18% |
| - Single Axle | (34' to 43') | 25% |
| - Double Axle | (39' to 51') | 55% |
| - Triple Axle | (50' to 60') | 2% |
| - Sailboats | (39' to 50') | 1% |

The analysis of the Exhibit B "Embarcadero Marina Entry Counts" data can be found in Exhibit D of this report, "Dana Point Harbor Boat Launch Ramp Parking – Summer Weekend and Holiday Utilization – 2010, 2011, 2012 and 2014". Also see Exhibits B.1 through B.5 for photo examples of vehicle with trailer types and lengths.

During the five years of data analyzed, there were only 10 days with more than 200 paid launch ramp entries. One of these days was Friday, July 4th, 2014. On this day, the 202 paid launch ramp entries were as follows:

- | | | | |
|---------------|-----|-----|---------------------------|
| - PWC | 41 | 20% | (Size range - 29' to 35') |
| - Single Axle | 47 | 23% | (Size range - 34' to 43') |
| - Double Axle | 106 | 53% | (Size range - 39' to 51') |
| - Triple Axle | 7 | 3% | (Size range - 50' to 60') |
| - Sailboats | 1 | 1% | (Size range - 39' to 50') |

PDI has taken the proposed Commercial Core Project - Launch Ramp Parking Area design layout and inserted the 202 paid launch ramp entries from July 4th, 2014 to illustrate the space availability at the launch ramp parking area (See Exhibit A). It is important to keep in mind, that while this illustration depicts all 202 entries in the launch ramp parking area at the same time, the

reality is that these boaters come and go throughout the day. The likelihood of all 202 entries being in the Launch Ramp parking lot at the same time is extremely low.

However, assuming that these 202 vehicles with trailers are in the Launch Ramp parking area at the same time, the following sized spaces would remain available:

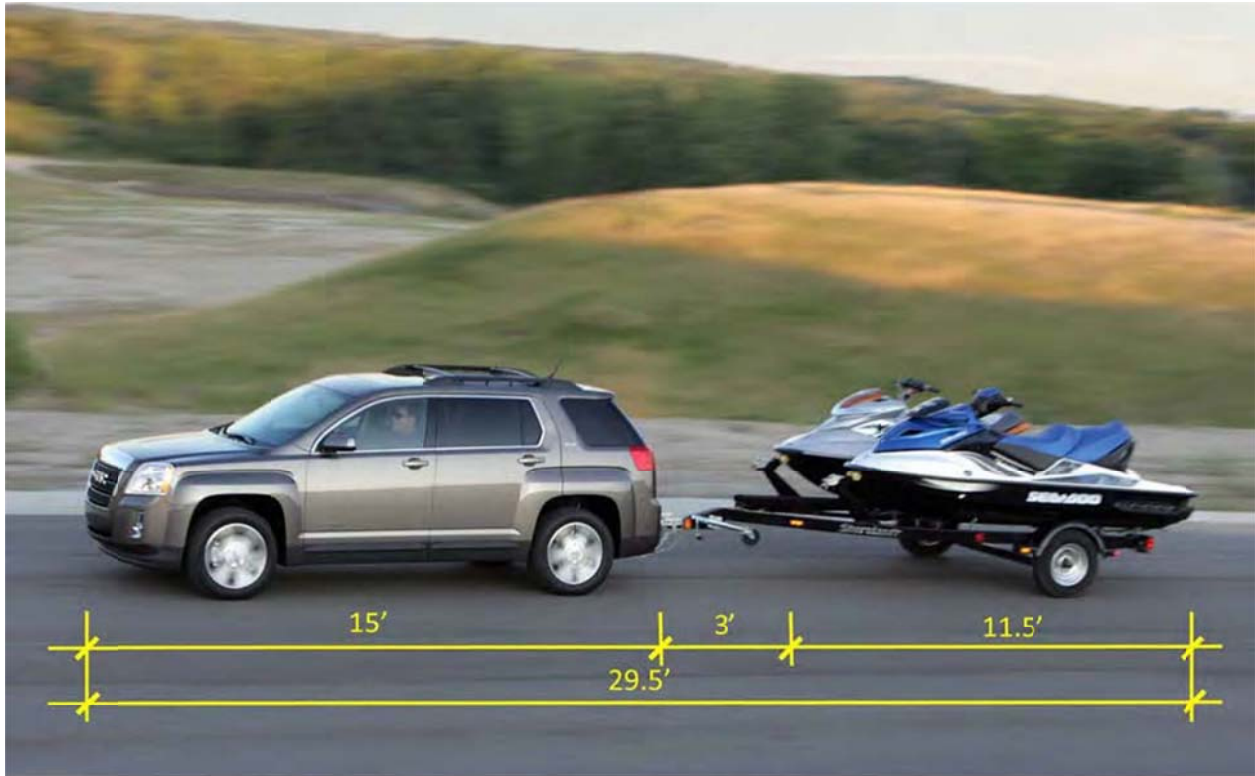
- 10' x 30' = 1
- 10' x 40' = 1
- 10' x 45' = 111
- 12' x 40' = 1
- 12' x 45' = 2
- 12' x 50' = 18

Conclusion

The Boat Launch Ramp Parking Area data for a 5-year period has been closely analyzed, including the size and quantity of vehicles with trailers utilizing the Boat Launch Ramp Parking Area. The proposed Dana Point Harbor Revitalization Day Use / Boat Launch Ramp Parking Area layout includes a variety of space sizes, with 94% of the spaces meeting or exceeding the DBW guidelines of 10 x 40 feet. Smaller spaces (30 and 35 feet) have also been provided to accommodate PWC's. 60% of the 336 spaces are designed as "pull through" spaces, in order to accommodate those requiring spaces larger than 50 feet in length.

It is the conclusion of this report that the proposed Boat Launch Ramp Parking Area layout, as currently designed in the CDP Application, will more than adequately meet the demand for Boat Launch Ramp Parking in Dana Point Harbor. It is additionally concluded that the proposed Boat Launch Ramp Parking Area will also be able to adequately accommodate a significant amount of increased demand for Boat Launch Ramp Parking should that occur in the future.





PERSONAL WATER CRAFT (PWC)

*Approximately 23% of Weekend Launches on Average
Overall Length Ranges from 29' to 35'*

EXHIBIT B.1





DOUBLE AXLE

*Approximately 23% of Weekend Launches on Average
Overall Length Ranges from 39' to 51'*

EXHIBIT B.3



TRIPLE AXLE

*Approximately 2% of Weekend Launches on Average
Overall Length Ranges from 50' to 60'*

EXHIBIT B.4



SAILBOAT

*Approximately 2% of Weekend Launches on Average
Overall Length Ranges from 39' to 50'*

EXHIBIT B.5

EXHIBIT C
Embarcadero Marina
July 2-5, 2010 Entry Counts

	Friday 7/2/10	Saturday 7/3/10	Sunday 7/4/10	Monday 7/5/10	Friday-Monday 7/2/10 to 7/5/10	Friday-Sunday 7/3/09 to 7/5/09	Thursday-Saturday 7/3/08 to 7/5/08
Gate Count	122	202	106	123	553	479	513
Vehicle With Trailer							
Single Axle	26	42	28	43	139	97	
Double Axle	47	61	20	40	168	124	
Triple Axle	4	4	4	2	14	13	
Single Ski	9	18	9	14	50	84	
Multiple Ski	10	18	11	11	50	43	
Sailboat	0	1	1	1	3	4	
Total	96	144	73	111	313	365	

**Difference from gate count to actual is due to entries when no gate attendant on duty.

Embarcadero Marina
July 9-11, 2010 Entry Counts

	Friday 7/9/10	Saturday 7/10/10	Sunday 7/11/10	Friday-Sunday 7/9/10 to 7/11/10	Friday-Sunday 7/10/09 to 7/12/09	Friday-Sunday 7/11/08 to 7/13/08
GateCount	45	116	123	284	431	565
Vehicle With Trailer						
Single Axle	9	37	44	90	112	
Double Axle	13	40	35	88	121	
Triple Axle	2	7	4	13	6	
Single Ski	8	9	10	27	50	
Multiple Ski	6	12	9	27	36	
Sailboat	1	4	1	6	1	
Total	39	109	103	251	326	

**Difference from gate count to actual is due to entries when no gate attendant on duty.

Embarcadero Marina
July 16-18, 2010 Entry Counts

	Friday 7/16/10	Saturday 7/17/10	Sunday 7/18/10	Friday-Sunday 7/16/10 to 7/18/10	Friday-Sunday 7/17/09 to 7/19/09	Friday-Sunday 7/18/08 to 7/20/08
GateCount	178	200	188	566	510	408
Vehicle With Trailer						
Single Axle	29	75	66	170	136	
Double Axle	27	53	36	116	152	
Triple Axle	4	2	3	9	8	
Single Ski	37	18	31	86	67	
Multiple Ski	31	27	18	76	55	
Sailboat	1	1	2	4	0	
Total	129	176	156	461	418	

**Difference from gate count to actual is due to entries when no gate attendant on duty.

Enbarcadero Marina
July 30-August 1, 2010 Entry Counts

	Friday 7/30/10	Saturday 7/31/10	Sunday 8/1/10	Friday-Sunday 7/30/10 to 8/1/10	Friday-Sunday 7/31/09 to 8/2/09	Friday-Sunday 8/1/08 to 8/3/08	Friday-Sunday 8/3/07 to 8/5/07
Gate Count	42	130	139	311	506	538	558
Vehicle With Trailer							
Single Axle	16	35	44	95	146		
Double Axle	10	45	32	87	144		
Triple Axle	2	3	2	7	7		
Single Ski	5	12	21	38	67		
Multiple Ski	5	10	18	33	66		
Sailboat	0	1	1	2	5		
Total	38	106	118	262	435		

**Difference from gate count to actual is due to entries when no gate attendant on duty.

Embarcadero Marina
August 6-8, 2010 Entry Counts

	Friday 8/6/10	Saturday 8/7/10	Sunday 8/8/10	Friday-Sunday 8/6/10 to 8/8/10	Friday-Sunday 8/7/09 to 8/9/09	Friday-Sunday 8/8/08 to 8/11/08	Friday-Sunday 8/10/07 to 8/12/07
Gate Count	117	169	121	407	492	989	814
Vehicle With Trailer							
Single Axle	14	47	39	100	120		
Double Axle	16	43	27	86	162		
Triple Axle	3	1	2	6	9		
Single Ski	3	8	14	25	43		
Multiple Ski	9	11	12	32	29		
Sailboat	2		1	3	5		
Total	47	110	95	252	368		

**Difference from gate count to actual is due to entries when no gate attendant on duty.

Enbarcadero Marina
August 13-15, 2010 Entry Counts

	Friday 8/13/10	Saturday 8/14/10	Sunday 8/15/10	Friday-Sunday 8/13/10 to 8/15/10	Friday-Sunday 8/14/09 to 8/16/09	Friday-Sunday 8/15/08 to 8/18/08	Friday-Sunday 8/17/07 to 8/19/07
Gate Count	53	137	138	328	436	630	541
Vehicle With Trailer							
Single Axle	21	45	36	102	141		
Double Axle	9	34	34	77	126		
Triple Axle	2	1	1	4	13		
Single Ski	1	14	16	31	37		
Multiple Ski	6	14	18	38	41		
Sailboat	0	3	1	4	0		
Total	39	111	106	256	358		

**Difference from gate count to actual is due to entries wher no gate attendant on duty.

Enbarcadero Marina
August 20-22, 2010 Entry Counts

	Friday 8/20/10	Saturday 8/21/10	Sunday 8/22/10	Friday-Sunday 8/20/10 to 8/22/10	Friday-Sunday 8/21/09 to 8/23/09	Friday-Sunday 8/22/08 to 8/24/08	Friday-Sunday 8/24/07 to 8/26/07
Gate Count	51	159	158	368	267	714	466
Vehicle With Trailer							
Single Axle	14	41	46	101	68		
Double Axle	16	41	28	85	66		
Triple Axle	1	4	2	7	7		
Single Ski	8	15	16	39	27		
Multiple Ski	5	18	21	44	23		
Sailboat	1	0	2	3	4		
Total	45	119	115	279	195		

**Difference from gate count to actual is due to entries wher no gate attendant on duty.

Embassypark
August 27-29, 2010 Entry Counts

	Friday 8/27/10	Saturday 8/28/10	Sunday 8/29/10	Friday-Sunday 8/27/10 to 8/29/10	Friday-Sunday 8/28/09 to 8/30/09	Friday-Sunday 8/28/08 to 8/29/08	Friday-Sunday 8/28/07 to 8/29/07
Gate Count	54	82	131	267	507	799	531
Vehicle With trailer							
Single Aisle	8	30	20	57	126		
Double Aisle	17	29	39	85	139		
Triples Aisle	0	2	4	6	5		
Single Site	4	8	14	26	88		
Multiple Site	8	11	8	27	36		
Unlabeled	1	1	0	2	3		
Total	38	71	85	194	447		

**Difference from gate count to actual is due to entries when no gate attendant on duty.

Embarcadero Marina
September 3-6, 2010 Entry Counts

	Friday 9/3/10	Saturday 9/4/10	Sunday 9/5/10	Monday 9/6/10	Friday-Monday 9/3/10 to 9/6/10	Friday-Monday 9/4/07 to 9/7/09	Friday-Monday 8/29/08 to 9/1/08	Friday-Monday 8/31/07 to 9/3/07
Gate Count	55	132	148	96	429	806	929	746
Vehicle With Trailer								
Single Axle	15	46	38	34	133	172		
Double Axle	10	41	36	21	108	182		
Triple Axle	2	2	3	2	9	17		
Single Ski	10	15	29	8	62	76		
Multiple Ski	7	15	11	7	40	85		
Sailboat	0	1	0	1	2	1		
Total	44	120	117	73	281	533		

**Difference from gate count to actual is due to entries when no gate attendant on duty.

Embarcadero Marina
September 10-12, 2010 Entry Counts

	Friday 9/10/10	Saturday 9/11/10	Sunday 9/12/10	Friday-Sunday 9/10/10 to 9/12/10	Friday-Sunday 9/11/09 to 9/13/09	Friday-Sunday 9/12/08 to 9/14/08	Friday-Sunday 9/14/07 to 9/16/07
Gate Count	42	82	90	214	336	673	146
Vehicle With Trailer							
Single Axle	6	26	33	65	70		
Double Axle	10	19	8	37	78		
Triple Axle	0	2	0	2	4		
Single Ski	7	10	17	34	30		
Multiple Ski	5	4	5	14	24		
Sailboat	2	0	2	4	3		
Total	30	61	65	156	209		

**Difference from gate count to actual is due to entries when no gate attendant on duty.

Enbarcadero Marina
September 17-19, 2010 Entry Counts

	Friday 9/17/10	Saturday 9/18/10	Sunday 9/19/10	Friday-Sunday 9/17/10 to 9/19/10	Friday-Sunday 9/18/09 to 9/20/09	Friday-Sunday 9/19/08 to 9/21/08	Friday-Sunday 9/21/07 to 9/23/07
Gate Count	55	79	68	202	380	467	136
Vehicle With Trailer							
Single Axle	2	18	18	38	77		
Double Axle	8	15	18	41	106		
Triple Axle	4	2	0	6	8		
Single Ski	3	15	5	23	51		
Multiple Ski	4	6	11	21	34		
Sailboat	2	5	1	8	3		
Total	23	61	53	137	281		

**Difference from gate count to actual is due to entries when no gate attendant on duty.

Embarcadero Marina
September 10-12, 2010 Entry Counts

	Friday 9/10/10	Saturday 9/11/10	Sunday 9/12/10	Friday-Sunday 9/10/10 to 9/12/10	Friday-Sunday 9/11/09 to 9/13/09	Friday-Sunday 9/12/08 to 9/14/08	Friday-Sunday 9/14/07 to 9/16/07
Gate Count	42	82	90	214	336	673	146
Vehicle With Trailer							
Single Axle	6	26	33	65	70		
Double Axle	10	19	8	37	78		
Triple Axle	0	2	0	2	4		
Single Ski	7	10	17	34	30		
Multiple Ski	5	4	5	14	24		
Sailboat	2	0	2	4	3		
Total	30	61	65	156	209		

**Difference from gate count to actual is due to entries when no gate attendant on duty.

Enbarcadero Marina
September 24-26, 2010 Entry Counts

	Friday 9/24/10	Saturday 9/25/10	Sunday 9/26/10	Friday-Sunday 9/24/10 to 9/26/10	Friday-Sunday 9/25/09 to 9/27/09	Friday-Sunday 9/26/08 to 9/28/08	Friday-Sunday 9/28/07 to 9/30/07
Gate Count	64	161	231	456	376	411	391
Vehicle With Trailer							
Single Axle	9	53	47	109	67		
Double Axle	15	36	46	97	101		
Triple Axle	1	5	3	9	4		
Single Ski	2	28	55	85	55		
Multiple Ski	4	13	35	52	27		
Sailboat	0	4	1	5	10		
Total	31	139	187	357	264		

**Difference from gate count to actual is due to entries when no gate attendant on duty.

Embarcadero Marina
July 1-4, 2011 Entry Counts

Gate Count	Friday 7/1/11	Saturday 7/2/11	Sunday 7/3/11	Monday 7/4/11	Friday-Monday 7/1/11 to 7/4/11	Friday-Monday 7/2/10 to 7/5/10	Friday-Sunday 7/5/09 to 7/5/09	Thursday-Saturday 7/3/08 to 7/5/08	Tuesday-Thursday 7/3/07 to 7/5/07
Vehicle With Trailer	125	202	280	129	736	365	479	35.5	261
Single Axle	15	52	76	33	176	139	97		
Double Axle	27	76	97	20	220	168	124		
Triple Axle	4	9	4	2	19	14	13		
Single Sk	17	18	24	12	69	50	84		
Multiple Sk	9	22	29	15	75	50	43		
Sailboat	2	1	1	0	4	3	4		
Total	74	178	231	82	481	313	365		

**Difference from gate count to actual is due to entries when no gate attendant on duty.

Embarcafero Marina
July 8-10, 2011 Entry Counts

	Friday 7/8/11	Saturday 7/9/11	Sunday 7/10/11	Friday-Sunday 7/8/11 to 7/10/11	Friday-Sunday 7/9/10 to 7/11/10	Friday-Sunday 7/10/09 to 7/12/09	Friday-Sunday 7/11/08 to 7/13/08	Friday-Sunday 7/13/07 to 7/15/07
Gate Count	75	142	143	360	294	431	565	515
Vehicle With Trailer								
Single Axle	12	39	52	103	30	112		
Double Axle	8	47	39	94	88	121		
Triple Axle	1	4	2	7	13	6		
Single Ski	6	14	20	40	27	50		
Multiple Ski	6	10	11	27	27	36		
Sailboat	0	4	1	5	6	1		
Total	33	118	125	276	251	326		

**Difference from gate count to actual is due to entries when no gate attendant on duty.

Embarcafero Marina
July 15-17, 2010 Entry Counts

Gate Count	Friday 7/15/11	Saturday 7/16/11	Sunday 7/17/11	Friday-Sunday 7/15/11 to 7/17/11	Friday-Sunday 7/16/10 to 7/18/10	Friday-Sunday 7/17/09 to 7/19/09	Friday-Sunday 7/18/08 to 7/20/08	Friday-Sunday 7/20/07 to 7/21/07
Vehicle With Trailer	57	130	143	332	309	310	408	536
Single Axle	13	33	45	91	170	136		
Double Axle	16	49	50	115	116	152		
Triple Axle	0	2	2	4	9	8		
Single Ski	4	16	24	44	36	67		
Multiple Ski	8	13	20	41	76	55		
Sailboat	0	3	0	3	4	0		
Total	41	116	141	298	461	418		

**Difference from gate count to actual is due to entries when no gate attendant on duty.

Embarcafero Marina
July 22-24, 2011 Entry Counts

Gate Count	Friday 7/22/11	Saturday 7/23/11	Sunday 7/24/11	Friday-Sunday 7/22/11 to 7/24/11	Friday-Sunday 7/23/10 to 7/25/10	Friday-Sunday 7/24/09 to 7/26/09	Friday-Sunday 7/25/08 to 7/27/08	Friday-Sunday 7/27/07 to 7/29/07
Gate Count	140	167	161	470	353	378	625	628
Vehicle With Trailer								
Single Axle	33	51	60	144	128	95		
Double Axle	20	60	32	112	79	120		
Triple Axle	4	6	1	11	12	3		
Single Ski	10	20	28	58	76	103		
Multiple Ski	31	16	18	65	59	62		
Sailboat	1	1	2	4	3	3		
Total	99	154	141	394	257	386		

**Difference from gate count to actual is due to entries when no gate attendant on duty.

Embarcafero Marina
July 29-31, 2011 Entry Counts

Gate Count	Friday 7/29/11	Saturday 7/30/11	Sunday 7/31/11	Friday-Sunday 7/29/11 to 7/31/11	Friday-Sunday 7/30/10 to 8/1/10	Friday-Sunday 7/31/09 to 8/2/09	Friday-Sunday 8/1/08 to 8/3/08	Friday-Sunday 8/3/07 to 8/5/07
Vehicle With Trailer	65	140	83	288	311	308	538	598
Single Axle	14	39	25	78	35	146		
Double Axle	7	50	22	79	87	144		
Triple Axle	1	2	0	3	7	7		
Single Ski	8	15	10	33	38	67		
Multiple Ski	10	13	10	33	33	66		
Sailboat	3	1	0	4	2	5		
Total	43	120	67	230	252	435		

**Difference from gate count to actual is due to entries when no gate attendant on duty.

Embarcafero Marina
August 5-7, 2011 Entry Counts

Gate Count	Friday 8/5/11	Saturday 8/6/11	Sunday 8/7/11	Friday-Sunday 8/5/11 to 8/7/11	Friday-Sunday 8/6/10 to 8/8/10	Friday-Sunday 8/7/09 to 8/9/09	Friday-Sunday 8/8/08 to 8/11/08	Friday-Sunday 8/10/07 to 8/11/07
Vehicle With Trailer	116	223	124	463	437	492	989	814
Single Axle	10	39	42	91	100	120		
Double Axle	16	56	38	110	86	162		
Triple Axle	2	3	2	7	6	9		
Single Ski	3	14	16	33	25	43		
Multiple Ski	10	15	17	42	32	29		
Sailboat	0	2	0	2	3	5		
Total	41	129	115	285	252	368		

**Difference from gate count to actual is due to entries when no gate attendant on duty.

Embarcafero Marina
August 12-14, 2011 Entry Counts

	Friday 8/12/11	Saturday 8/13/11	Sunday 8/14/11	Friday-Sunday 8/12/11 to 8/14/11	Friday-Sunday 8/13/10 to 8/15/10	Friday-Sunday 8/14/09 to 8/16/09	Friday-Sunday 8/15/08 to 8/18/08	Friday-Sunday 8/17/07 to 8/19/07
Gate Count	40	122	117	279	358	436	630	541
Vehicle With Trailer								
Single Axle	11	39	55	105	122	141		
Double Axle	12	34	37	83	77	126		
Triple Axle	1	1	2	4	4	13		
Single Ski	1	25	14	40	31	37		
Multiple Ski	2	9	7	18	38	42		
Sailboat	1	1	2	4	4	0		
Total	28	109	117	254	256	359		

**Difference from gate count to actual is due to entries when no gate attendant on duty.

Embarcafero Marina
August 19-21, 2011 Entry Counts

Gate Count	Friday 8/19/11	Saturday 8/20/11	Sunday 8/21/11	Friday-Sunday 8/19/11 to 8/21/11	Friday-Sunday 8/20/10 to 8/22/10	Friday-Sunday 8/21/09 to 8/23/09	Friday-Sunday 8/23/08 to 8/24/08	Friday-Sunday 8/24/07 to 8/26/07
Gate Count	55	89	122	270	358	267	714	466
Vehicle With Trailer								
Single Axle	6	31	52	89	111	68		
Double Axle	17	27	42	86	85	66		
Triple Axle	1	0	2	3	7	7		
Single Ski	1	12	13	26	39	27		
Multiple Ski	0	15	8	31	14	23		
Sailboat	1	1	3	5	3	4		
Total	34	86	120	240	279	195		

**Difference from gate count to actual is due to entries when no gate attendant on duty.

Embarcafero Marina
August 26-28, 2011 Entry Counts

	Friday 8/26/11	Saturday 8/27/11	Sunday 8/28/11	Friday-Sunday 8/26/11 to 8/28/11	Friday-Sunday 8/27/10 to 8/29/10	Friday-Sunday 8/28/09 to 8/30/09	Friday-Sunday 8/29/08 to 8/31/08	Friday-Sunday 8/31/07 to 9/2/07
Gate Count	58	163	148	365	217	507	799	524
Vehicle With Trailer								
Single Axle	6	41	46	93	53	126		
Double Axle	12	42	40	94	81	135		
Triple Axle	2	3	2	5	4	5		
Single Ski	8	20	19	47	26	88		
Multiple Ski	4	19	11	34	12	90		
Sailboat	3	1	2	6	2	3		
Total	35	124	120	279	188	447		

**Difference from gate count to actual is due to entries when no gate attendant on duty.

Embarcadero Marina
September 2-5, 2010 Entry Counts

	Friday 9/2/11	Saturday 9/3/11	Sunday 9/4/11	Monday 9/5/11	Friday-Monday 9/2/11 to 9/5/11	Friday-Monday 9/3/10 to 9/6/10	Friday-Monday 9/4/07 to 9/7/09	Friday-Monday 9/29/08 to 9/1/08	Friday-Monday 9/21/07 to 9/3/07
Gate Count	61	114	91	63	329	429	806	929	746
Vehicle With Trailer									
Single axle	11	29	22	18	80	133	172		
Double Axle	10	35	29	29	103	108	182		
Triple Axle	3	2	4	1	10	9	17		
Single 3d	4	20	10	3	37	62	76		
Multiple 3d	5	13	13	4	35	40	85		
Salibox	1	3	5	2	11	2	1		
Total	34	102	83	57	219	281	533		

**Difference from gate count to actual is due to entries when no gate attendant on duty.

Embarcafero Marina
September 9-11, 2011 Entry Counts

Gate Count	Friday 9/9/11	Saturday 9/10/11	Sunday 9/11/11	Friday-Sunday 9/9/11 to 9/11/11	Friday-Sunday 9/10/10 to 9/12/10	Friday-Sunday 9/11/09 to 9/13/09	Friday-Sunday 9/12/08 to 9/14/08	Friday-Sunday 9/14/07 to 9/16/07
Vehicle With Trailer	35	43	88	165	219	336	673	1,802
Single Axle	9	15	22	46	55	70		
Double Axle	7	16	26	49	57	78		
Triple Axle	1	2	0	3	2	4		
Single Ski	1	3	8	12	14	30		
Multiple Ski	2	1	6	9	14	24		
Sailboat	0	0	1	1	4	3		
Total	20	37	63	120	156	209		

**Difference from gate count to actual is due to entries when no gate attendant on duty.

Embarcadero Marina
September 16-18, 2011 Entry Counts

Gate Count	Friday 9/16/11	Saturday 9/17/11	Sunday 9/18/11	Friday-Sunday	Friday-Sunday	Friday-Sunday	Friday-Sunday	Friday-Sunday
	24	65	89	9/16/11 to 9/18/11	9/17/10 to 9/19/10	9/18/09 to 9/20/09	9/19/01 to 9/21/08	9/21/07 to 9/23/07
Vehicle With Trailer				174	202	380	467	136
Single Use	7	19	26	52	38	77		
Double Use	12	16	24	52	41	108		
Triple Use	0	1	0	1	6	8		
Single Ski	0	14	9	23	23	52		
Multiple Ski	3	6	13	22	21	34		
Sailboat	0	1	2	3	8	3		
Total	22	57	74	153	137	282		

**Difference from gate count to actual is due to entries when no gate attendant on duty.

Embarcadero Marina
September 23-25, 2011 Entry Counts

Gate Count	Friday 9/23/11	Saturday 9/24/11	Sunday 9/25/11	Friday-Sunday 9/23/11 to 9/25/11	Friday-Sunday 9/24/10 to 9/26/10	Friday-Sunday 9/25/09 to 9/27/09	Friday-Sunday 9/26/01 to 9/28/08	Friday-Sunday 9/28/07 to 9/30/07
	28	76	54	158	456	378	411	391
Vehicle With Trailer								
Single Aisle	0	16	8	24	109	67		
Double Aisle	2	23	15	40	97	101		
Triple Aisle	0	1	1	2	9	4		
Single Ski	0	6	11	17	85	55		
Multiple Ski	3	3	2	8	52	27		
Sailboat	0	5	2	7	5	10		
Total	5	54	39	98	357	264		

**Difference from gate count to actual is due to entries when no gate attendant on duty.

Embassadors Marina
July 4-8, 2012 Entry Counts

	Wednesday 7/4/12	Thursday 7/5/12	Friday 7/6/12	Saturday 7/7/12	Sunday 7/8/12	Wednesday-Sunday 7/4/12 to 7/8/12	Friday-Monday 7/1/11 to 7/4/11	Friday-Monday 7/2/10 to 7/5/10	Friday-Sunday 7/09 to 7/5/09	Thursday-Saturday 7/3/08 to 7/5/08	Tuesday-Thursday 7/307 to 7/5/07
Gate Count	129	54	35	126	128	502	736	553	479	513	840
Vehicle With Trailer											
Single Aft	30	14	8	47	48	146	176	139	97		
Double Aft	79	18	9	42	84	132	220	160	124		
Triple Aft	1	2	1	1	1	6	13	14	13		
Single St	10	1	1	12	17	55	69	50	64		
Multiple(s)	5	3	1	10	13	44	75	50	43		
Ballast	1	2	2	0	1	6	4	3	4		
Total	145	40	22	112	110	389	481	313	365		

**Difference from gate count to actual is due to entries when no gate attendant on duty.

Embarcadero Marina
July 13-15, 2012 Entry Counts

	Counts 70			Friday-Sunday		Friday-Sunday		Friday-Sunday		Friday-Sunday	
	Friday 7/13/12	Saturday 7/14/12	Sunday 7/15/12	7/13/12 to 7/15/12	7/15/11 to 7/17/11	7/16/10 to 7/18/10	7/19/09 to 7/19/09	7/19/08 to 7/20/08	7/20/07 to 7/22/07		
Gate Count	65	103	9	236	332	566	510	426	336		
Vehicle With Trailer											
Single Axle	12	33	3	88	91	170	136				
Double axle	17	36	2	79	115	115	152				
Triple Axle	0	2	-	3	4	9	8				
Single SW	0	9	1	23	44	86	67				
Multiple SW	5	18	1	0	41	79	30				
Selfboat	0	2	-	4	3	4	0				
Total	34	102	9	227	298	461	418				

**Difference from gate count to actual is due to entries when no gate attendant on duty.

Embarcadero Marina
July 20-22, 2012 Entry Counts

	Sun 7S	Sun 7S	Clouds 7S	Friday-Sunday	Friday-Sunday	Friday-Sunday	Friday-Sunday	Friday-Sunday	Friday-Sunday
	Friday 7/20/12	Saturday 7/21/12	Sunday 7/22/12	7/20/12 to 7/22/12	7/22/11 to 7/24/11	7/23/10 to 7/25/10	7/24/09 to 7/26/09	7/25/08 to 7/27/08	7/23/07 to 7/29/07
Gate Count	75	130	111	312	470	333	376	125	626
Vehicle With Trailer									
Single Axle	11	41	3	90	144	108	90		
Double axle	15	43	3	90	112	79	120		
Triple Axle	0	3	1	6	11	12	3		
Single BI	3	10	2	38	58	26	108		
Multiple BI	8	10	14	0	65	39	62		
Selfboat	2	1	1	6	4	3	3		
Total	39	110	111	264	394	267	386		

**Difference from gate count to actual is due to entries when no gate attendant on duty.

Embarcadero Marina
July 27-29, 2012 Entry Counts

	Sun 75	Sun 75	Cloud 75	Friday-Sunday	Friday-Sunday	Friday-Sunday	Friday-Sunday	Friday-Sunday	Friday-Sunday
	Friday 7/27/12	Saturday 7/28/12	Sunday 7/29/12	7/27/12 to 7/29/12	7/29/11 to 7/31/11	7/30/10 to 8/1/10	7/3/09 to 8/2/09	8/1/08 to 8/3/08	8/3/07 to 8/5/07
Gate Count	37	119	13	308	286	311	508	188	350
Vehicle With Trailer									
Single Axle	13	33	2	71	78	95	140		
Double axle	9	33	2	63	79	87	144		
Triple Axle	0	3	-	4	3	7	7		
Single SW	3	28	11	50	33	38	67		
Multiple SW	5	14	1	0	33	33	66		
Seafloat	1	6	-	8	4	2	5		
Total	31	119	8	230	230	262	435		

**Difference from gate count to actual is due to entries when no gate attendant on duty.

Embarcadero Marina
August 3-5, 2012 Entry Counts

	Sun 75	Sun 75	Sun 75	Friday-Sunday	Friday-Sunday	Friday-Sunday	Friday-Sunday	Friday-Sunday	Friday-Sunday
	Friday 8/3/12	Saturday 8/4/12	Sunday 8/5/12	8/3/12 to 8/5/12	8/5/11 to 8/7/11	8/5/10 to 8/9/10	8/7/09 to 8/9/09	8/9/08 to 8/11/08	8/10/07 to 8/12/07
Gate Count	125	162	134	423	469	407	493	85	814
Vehicle With Trailer									
Single Axle	17	44	3	100	91	100	120		
Double axle	30	48	4	120	110	86	162		
Triple Axle	0	4	2	9	7	6	9		
Single BI	5	13	11	36	33	25	48		
Multiple BI	16	10	1	0	42	32	28		
SeaBoat	1	4	2	7	2	3	5		
Total	69	123	127	315	285	252	368		

**Difference from gate count to actual is due to entries when no gate attendant on duty.

Embarcadero Marina
August 10-12, 2012 Entry Counts

	Sun BS			Friday-Sunday	Friday-Sunday	Friday-Sunday	Friday-Sunday	Friday-Sunday	Friday-Sunday
	Friday 8/10/12	Saturday 8/11/12	Sunday 8/12/12	8/10/12 to 8/12/12	8/12/11 to 8/14/11	8/13/10 to 8/15/10	8/14/09 to 8/16/09	8/15/08 to 8/18/08	8/12/07 to 8/18/07
Gate Count	71	172	141	387	379	378	436	125	341
Vehicle With Trailer									
Single Axle	14	40	4	98	105	103	141		
Double axle	18	43	4	100	89	77	135		
Triple Axle	2	5	2	9	4	4	13		
Single SW	2	18	2	42	40	31	37		
Multiple SW	5	21	14	36	18	38	42		
Selfboat	2	1	0	3	4	4	0		
Total	43	127	111	286	254	256	269		

Embarcadero Marina
August 17-19 Entry Counts, 2012

	Sun 85	Sun 85	Sun 85	Friday-Sunday	Friday-Sunday	Friday-Sunday	Friday-Sunday	Friday-Sunday	Friday-Sunday
	Friday 8/17/12	Saturday 8/18/12	Sunday 8/19/12	8/17/12 to 8/19/12	8/19/11 to 8/21/11	8/20/10 to 8/22/10	8/23/09 to 8/23/09	8/23/08 to 8/24/08	8/24/07 to 8/26/07
Gate Count	60	157	154	370	370	368	267	124	466
Vehicle With Trailer									
Single Axle	8	43	4	95	89	101	60		
Double axle	13	42	6	116	80	85	66		
Triple Axle	0	4	2	6	3	7	7		
Single BI	6	10	2	42	26	38	27		
Multiple BI	5	73	7	48	31	44	34		
Seaboot	2	0	1	3	5	3	4		
Total	34	171	155	310	240	299	196		

**Difference from gate count to actual is due to entries when no gate attendant on duty.

Embarcadero Marina
August 24-26 Entry Counts, 2012

	Sun 78	Cloudy/Sun 78	Cloudy/Sun 80	Friday-Sunday	Friday-Sunday	Friday-Sunday	Friday-Sunday	Friday-Sunday	Friday-Sunday
	Friday 8/24/12	Saturday 8/25/12	Sunday 8/26/12	8/24/12 to 8/26/12	8/25/11 to 8/28/11	8/27/10 to 8/29/10	8/28/09 to 8/30/09	8/29/08 to 8/31/08	8/31/07 to 9/2/07
Gate Count	66	150	144	370	365	347	357	129	924
Vehicle With Trailer									
Single Axle	14	53	5	173	93	53	126		
Double axle	15	41	4	98	94	81	136		
Triple Axle	0	2	0	2	5	4	5		
Single SR	1	8	1	26	47	26	68		
Multiple SR	2	8	3	23	34	22	90		
SeaBoat	2	1	1	6	6	2	3		
Total	34	113	13	280	279	189	447		

**Difference from gate count to actual is due to entries when no gate attendant on duty.

Enbatsadero Marina
August 31-September 9 Entry Counts, 2012

	Sun 80	Sun 80	Sun 80	Sun 80	Friday-Monday	Friday-Monday	Friday-Monday	Friday-Monday	Friday-Monday	Friday-Monday
	Friday 8/31/12	Saturday 9/1/12	Sunday 9/2/12	Monday 9/3/12	8/31/12 to 9/7/12	9/2/11 to 9/9/11	9/3/10 to 9/6/10	9/4/07 to 9/7/09	8/29/08 to 9/1/08	9/31/07 to 9/9/07
Gate Count	99	156	158	133	540	329	429	806	929	746
Vehicle With Trailer										
Single Aft	11	39	43	34	127	80	119	172		
Double Aft	25	59	40	36	154	103	138	192		
Triple Aft	0	1	3	2	6	10	9	17		
Single St	7	23	11	12	53	37	12	26		
Multiple(s)	5	8	19	9	41	35	10	85		
Ballast	1	1	4	0	0	11	2	1		
Total	49	125	120	99	296	219	211	583		

**Difference from gate count to actual is due to entries when no gate attendant on duty.

Embarcadero Marina
September 7-9 Entry Counts, 2012

	Sun 80	Sun 80	Sun 80	Friday-Sunday	Friday-Sunday	Friday-Sunday	Friday-Sunday	Friday-Sunday	Friday-Sunday
	Friday 9/7/12	Saturday 9/8/12	Sunday 9/9/12	9/7/12 to 9/9/12	9/9/11 to 9/11/11	9/10/10 to 9/12/10	9/13/09 to 9/13/09	9/12/08 to 9/14/08	9/14/07 to 9/16/07
Gate Count	85	130	13	351	165	214	336	125	144
Vehicle With Trailer									
Single Axle	10	29	3	75	46	65	20		
Double axle	10	43	3	92	49	37	20		
Triple Axle	0	0	-	1	3	2	4		
Single BI	1	10	2	34	12	34	25		
Multiple BI	4	7	11	29	9	14	24		
Seaboot	2	2	0	4	1	4	3		
Total	27	93	11	230	120	156	209		

**Difference from gate count to actual is due to entries when no gate attendant on duty.

Embarcadero Marina
September 14-16 Entry Counts, 2012

	Sun 95	Sun 95	Sun 05	Friday-Sunday	Friday-Sunday	Friday-Sunday	Friday-Sunday	Friday-Sunday	Friday-Sunday
	Friday 9/14/12	Saturday 9/15/12	Sunday 9/16/12	9/14/12 to 9/16/12	9/16/11 to 9/18/11	9/17/10 to 9/19/10	9/18/09 to 9/20/09	9/19/08 to 9/21/08	9/21/07 to 9/23/07
Gate Count	75	144	101	320	174	202	302	467	136
Vehicle With Trailer									
Single Axle	7	30	21	64	52	38	77		
Double Axle	10	36	25	71	52	41	108		
Triple Axle	1	1	4	6	1	6	8		
Single 18	4	14	11	29	28	28	52		
Multiple Axle	4	15	12	31	22	21	34		
Selfboat	2	2	1	5	3	8	3		
Total	28	106	74	208	158	132	202		

**Difference from gate count to actual is due to entries when no gate attendant on duty.

Embarcadero Marina
September 21-28, 2012 Entry Counts

	Sun 8S	Sun 8S	Sun 8S	Friday-Sunday	Friday-Sunday	Friday-Sunday	Friday-Sunday	Friday-Sunday	Friday-Sunday
	Friday 9/21/12	Saturday 9/22/12	Sunday 9/23/12	9/21/12 to 9/23/12	9/23/11 to 9/29/11	9/24/10 to 9/26/10	9/25/09 to 9/27/09	9/26/08 to 9/28/08	9/28/07 to 9/30/07
Gate Count	92	101	101	295	138	456	373	411	951
Vehicle With Trailer									
Single Axle	7	31	27	65	24	109			
Double Axle	17	38	39	94	40	97			
Triple Axle	0	1	1	2	7	3			
Single 18	2	14	16	32	17	85			
Multiple Axle	2	10	8	20	8	52			
Sailboat	1	3	2	6	7	3			
Total	29	97	93	215	98	337			

**Difference from gate count to actual is due to entries when no gate attendant on duty.

Embarcadero Marina
September 28-30, 2012 Entry Counts

	Sun 85	Sun 85	Sun 88	Friday-Sunday	Friday-Sunday	Friday-Sunday	Friday-Sunday	Friday-Sunday	Friday-Sunday
	Friday 9/28/12	Saturday 9/29/12	Sunday 9/30/12	9/28/12 to 9/30/12	9/30/11 to 9/2/11	10/1/10 to 10/3/10	10/2/09 to 10/4/09	10/3/08 to 10/5/08	10/5/07 to 10/7/07
Gate Count	91	125	111	289	239	292	329	287	326
Vehicle With Trailer									
Single Axle	7	33	30	70	62	68	76		
Double Axle	7	21	26	54	69	61	94		
Triple Axle	0	1	2	3	3	4	2		
Single Sk	4	8	15	27	22	18	37		
Multiple Sk	0	9	15	24	13	13	7		
Selfboat	1	3	3	7	3	3	7		
Total	19	78	91	185	172	167	228		

**Difference from gate count to actual is due to entries when no gate attendant on duty.

Embarkadero Marina
July 4-7 Entry Counts, 2013

	Cloudy/Sun 7/8		Cloudy/Sun 7/8		Cloudy/Sun 7/8		Cloudy/Sun 7/8		Wednesday-Sunday	Friday-Monday	Friday-Monday	Friday-Sunday	Thursday-Saturday	Tuesday-Thursday
	Thursday 7/4/13	Friday 7/5/13	Saturday 7/6/13	Sunday 7/7/13	7/4/13 to 7/7/13	7/4/13 to 7/7/13	7/4/13 to 7/7/13	7/4/13 to 7/7/13	7/7/13 to 7/8/13	7/8/13 to 7/9/13	7/8/13 to 7/9/13	7/9/13 to 7/10/13	7/10/13 to 7/11/13	7/10/13 to 7/12/13
Gate Count	171	113	134	118	552	552	552	552	562	736	953	479	512	348
Vehicle With Trailer														
Single Axle	50	23	63	35	169	169	169	169	146	176	132	97		
Double Axle	25	18	44	22	110	110	110	110	220	220	168	124		
Trailer Axle	3	3	4	2	12	12	12	12	18	14	14	12		
Single Site	14	8	18	11	52	52	52	52	69	90	88	88		
Multiple Site	13	8	18	7	47	47	47	44	75	70	50	45		
Walkout	0	2	0	1	3	3	3	3	6	4	2	4		
Total	105	64	145	79	392	392	392	392	389	481	313	285		

*Difference from gate count is due to entries when no gate attendant on duty

Embarcadero Marina
July 12-14 Entry Counts, 2013

	Sun 7/7	Sun 7/7	Sun 7/7	Friday-Sunday	Friday-Sunday	Friday-Sunday	Friday-Sunday	Friday-Sunday	Friday-Sunday	Friday-Sunday
	Friday 7/12/13	Saturday 7/13/13	Sunday 7/14/13	7/12/13 to 7/14/13	7/13/13 to 7/14/13	7/13/13 to 7/14/13	7/14/13 to 7/15/13	7/14/13 to 7/15/13	7/15/13 to 7/16/13	7/16/13 to 7/17/13
Gate Count	48	148	177	918	265	332	566	530	408	536
Vehicle With Trailer										
Single Auto	10	45	95	90	86	91	131	138		
Double Auto	2	4	34	83	79	115	132	152		
Triple Auto	0	0	0	2	3	4	8	8		
Single Mx	2	17	22	43	22	44	88	87		
Multiple Mx	2	8	16	27	0	41	38	58		
GarageBot	0	1	2	8	4	3	4	0		
Total	18	113	109	245	227	296	441	431		

*Difference from gate count to actual is due to entries when no gate attendant on duty

Embarcadero Marina
July 19-21 Entry Counts, 2013

Gate Count	Overseas			Friday-Sunday		Friday-Sunday		Friday-Sunday		Friday-Sunday		Friday-Sunday	
	Friday 7/19/13	Saturday 7/20/13	Sunday 7/21/13	7/19/13 to 7/21/13	7/20/13 to 7/21/13	7/21/13 to 7/24/13	7/24/13 to 7/26/13	7/26/13 to 7/30/13	7/30/13 to 7/31/13	7/31/13 to 7/29/13	7/29/13 to 7/29/13	7/29/13 to 7/29/13	
Vehicle With Trailer	6	36	22	64	90	144	108						
Single Auto	11	22	20	68	93	112	79						
Concave Aisle	4	4	2	10	6	11	10						
Triple Auto	2	0	3	5	3	8	3						
Single Bk	3	0	3	6	3	9	3						
Multiple Bk	1	2	1	4	3	6	3						
Boatlift	1	2	1	4	3	6	3						
Total	28	78	54	166	204	394	207						

**Difference from gate count to actual is due to entries when no gate attendant on duty.

Embarcadero Marina
July 28-28 Entry Counts, 2013

Gate Count	Overseas			Friday/Sunday		Friday/Sunday		Friday/Sunday		Friday/Sunday		Friday/Sunday	
	Friday 7/26/13	Saturday 7/27/13	Sunday 7/28/13	7/26/13 to 7/28/13	7/27/13 to 7/29/13	7/28/13 to 7/30/13	7/29/13 to 8/1/13	7/30/13 to 8/1/13	7/31/13 to 8/2/13	8/1/13 to 8/3/13	8/2/13 to 8/4/13	8/3/13 to 8/5/13	
Gate Count	48	138	36	269	308	266	311	303	538	538	538	538	
Vehicle With Trailer	8	5	8	21	21	21	21	21	21	21	21	21	
Single Auto	3	52	28	83	73	79	85	85	140	140	140	140	
Concave Aisle	14	62	17	93	69	79	89	89	144	144	144	144	
Triple Auto	1	3	2	6	4	3	7	7	7	7	7	7	
Single Bk	8	14	12	34	30	33	38	38	67	67	67	67	
Multiple Bk	1	5	7	13	14	13	20	20	33	33	33	33	
Boatlift	1	2	0	3	0	0	2	2	5	5	5	5	
Total	52	117	74	211	232	232	266	266	416	416	416	416	

**Difference from gate count to actual is due to entries when no gate attendant on duty.

Embassadors/Maria
August 2-4 Entry Counts, 2013

Gate Count	Overseas #1		Overseas #2		Overseas #3		Friday/Sunday		Friday/Sunday		Friday/Sunday		Friday/Sunday		Friday/Sunday		Friday/Sunday		
	Friday 8/2/13	Saturday 8/3/13	Saturday 8/3/13	Sunday 8/4/13	8/2/13 to 8/4/13	8/3/13 to 8/4/13	8/2/13 to 8/4/13	8/2/13 to 8/4/13	8/2/13 to 8/4/13	8/2/13 to 8/4/13	8/2/13 to 8/4/13	8/2/13 to 8/4/13	8/2/13 to 8/4/13	8/2/13 to 8/4/13	8/2/13 to 8/4/13	8/2/13 to 8/4/13	8/2/13 to 8/4/13	8/2/13 to 8/4/13	
Gate Count	8	122	122	128	286	286	425	463	403	452	988							84	
Vehicle With Trailer																			
Single Auto	5	96	96	77	200	200	300	300	280	300	1200								
Concave Aisle	10	38	38	26	76	76	135	135	86	86	182								
Triple Auto	0	1	1	2	3	3	3	3	2	2	4								
Single Bk	4	20	20	17	41	41	86	86	38	38	45								
Multiple Se	2	3	3	3	9	9	15	15	10	10	20								
Ballroom	1	1	1	1	3	3	7	7	2	2	5								
Total	22	172	172	127	371	371	521	521	406	406	1284								

**Difference from gate count to actual is due to entries when no gate attendant on duty.

Embarcadero Marina
August 9-11 Entry Counts, 2011

	Sun 20	Sun 20	Sun 20	Friday-Sunday	Friday-Sunday	Friday-Sunday	Friday-Sunday	Friday-Sunday	Friday-Sunday	Friday-Sunday
	Friday 8/19/11	Saturday 8/20/11	Sunday 8/21/11	8/19/11 to 8/11/11	8/20/11 to 8/21/11	8/21/11 to 8/22/11	8/22/11 to 8/23/11	8/23/11 to 8/24/11	8/24/11 to 8/25/11	8/25/11 to 8/26/11
Gate Count	79	100	131	899	867	279	826	436	600	541
Vehicle With Trailer										
Tricycle Auto	17	19	31	67	96	105	181	141		
Coastal Aire	6	24	78	84	101	66	71	126		
Tricycle Auto	3	3	1	7	3	4	4	13		
Tricycle SR	2	13	10	30	42	40	31	37		
Maintenance	2	6	13	21	36	18	36	42		
Garbage	0	0	0	0	3	4	4	0		
Total	28	66	89	185	285	254	296	359		

**Difference from gate count to actual is due to entries when no gate attendant on duty

Embarcadero Marina
August 16-18 Entry Counts, 2013

	Overcast 72		Overcast 72		Overcast 72		Friday-Sunday		Friday-Sunday		Friday-Sunday		Friday-Sunday		Friday-Sunday		Friday-Sunday	
	Friday 8/16/13	Saturday 8/17/13	Saturday 8/17/13	Sunday 8/18/13	8/16/13 to 8/18/13	8/17/13 to 8/18/13	8/16/13 to 8/18/13	8/17/13 to 8/18/13	8/16/13 to 8/18/13	8/17/13 to 8/18/13	8/16/13 to 8/18/13	8/17/13 to 8/18/13	8/16/13 to 8/18/13	8/17/13 to 8/18/13	8/16/13 to 8/18/13	8/17/13 to 8/18/13	8/16/13 to 8/18/13	8/17/13 to 8/18/13
Gate Count	302	328	328	314	267	329	273	368	267									
Vehicle With Trailer																		
Single Auto	11	38	37	86	86	76	89	101	68									
Double Auto	7	32	26	83	83	116	56	88	66									
Triple Auto	1	6	2	9	9	6	3	1	7									
Single SM	6	17	13	26	26	42	20	21	27									
Multiple SM	4	5	11	22	22	48	31	44	28									
Boat/Motor	0	1	1	2	2	3	5	1	4									
Total	28	99	80	215	215	265	240	271	195									

*Difference from gate count to actual is due to entries when no gate attendant on duty

Embassadors Marina
August 20-25 Entry Counts, 2013

Stat	Sun 18 Friday 8/16/13	Mon/Tue 19 Saturday 8/17/13	Tue/Wed 20 Sunday 8/18/13	Wed/Thu 21 Monday 8/19/13	Thu/Fri 22 Tuesday 8/20/13	Fri/Sat 23 Wednesday 8/21/13	Sat/Sun 24 Thursday 8/22/13	Sun 25 Friday 8/23/13	Total
State Cruis	41	114	153	263	370	385	247	527	2000
Vehicle With Trailer	7	42	30	79	120	93	55	136	562
Single Aft	6	27	14	43	66	34	15	195	305
Double Aft	2	2	0	2	2	1	4	13	26
Triple Aft	4	17	14	37	70	41	26	89	287
Multiple Aft	6	6	8	20	23	14	22	90	180
Boatless	3	2	0	4	4	0	2	15	38
Total	78	228	219	446	605	567	369	1045	4413

**Difference from gate count to actual is due to entries when no gate attendant on duty.

Embroidery Machine
August 30/September 2 Entry Counts, 2013

Date Count	July 26	July 27	July 28	July 29	Friday Machine						
	8/1/2013	8/2/2013	8/3/2013	8/4/2013	8/9/13 to 9/2/13	9/2/13 to 9/11/13	9/11/13 to 9/20/13	9/20/13 to 9/29/13	9/29/13 to 9/28/13	10/1/13 to 10/2/13	
Embroidery Machine	74	142	105	137	400	540	329	429	805	920	746
Embroidery Machine	31	36	37	38	131	131	94	133	34	132	
Embroidery Machine	39	34	38	21	203	224	103	109	102		
Embroidery Machine	3	4	4	6	13	8	30	9	9		
Embroidery Machine	2	14	21	11	42	53	30	32	36		
Embroidery Machine	1	10	10	4	35	41	25	40	35		
Embroidery Machine	1	1	1	1	1	4	11	7	2		
Total	99	198	199	187	613	944	589	743	1,128	1,079	746

**Difference from gas count to actual is due to entries when no gas abundant on day.

Embarcadero Marina
September 4-8 Entry Counts, 2013

Gate Count	Sun 02	Sun 03	Sun 04	Friday/Sunday	Friday/Sunday	Friday/Sunday	Friday/Sunday	Friday/Sunday	Friday/Sunday	Friday/Sunday	Friday/Sunday
	Friday 9/6/13	Saturday 9/7/13	Sunday 9/8/13	9/13/13 to 9/13/13	9/13/13 to 9/13/13	9/13/13 to 9/13/13	9/13/13 to 9/13/13	9/13/13 to 9/13/13	9/13/13 to 9/13/13	9/13/13 to 9/13/13	9/13/13 to 9/13/13
Gate Count	68	108	138	367	351	185	214	336	619	148	148
Vehicle With Trailer											
Single Auto	14	30	25	201	201	46	60	70			
Concave Aisle	11	32	27	68	70	49	57	34			
Triple Auto	1	4	2	7	1	3	2	4			
Single Bk	8	28	24	146	146	13	38	60			
Multiple St	2	13	17	34	29	5	14	24			
Boatlift	0	0	0	0	4	1	4	3			
Total	36	107	89	274	283	122	179	205			

**Difference from gate count to actual is due to entries when no gate attendant on duty.

Embassadors Marina
September 23-25 Entry Counts, 2013

	Fig. 85	Fig. 86	Fig. 87	Friday/Today	Friday/Today	Friday/Sunday	Friday/Sunday	Friday/Sunday	Friday/Sunday	Friday/Sunday	Friday/Sunday
	Friday 9/20/13	Saturday 9/21/13	Sunday 9/22/13	9/23/13 to 9/25/13	9/24/13 to 9/26/13	9/27/13 to 9/29/13	9/27/13 to 9/29/13	9/28/13 to 9/30/13	9/29/13 to 9/30/13	9/29/13 to 9/30/13	9/29/13 to 9/30/13
Gate Counts	44	30	82	226	320	176	202	180	180	180	180
Vehicle With Trailer											
Single Aft	8	25	21	53	68	53	58	58	58	58	58
Double Aft	8	21	9	25	31	21	25	25	25	25	25
Triple Aft	3	1	0	2	4	3	3	3	3	3	3
Single In	0	13	15	35	29	20	20	20	20	20	20
Multiple In	2	8	11	21	24	22	22	22	22	22	22
Boatless	0	1	0	0	0	0	0	0	0	0	0
Total	13	73	62	148	208	150	150	150	150	150	150

**Difference from gate count to actual is due to entries when no gate attendant on duty.

Embassadors Marina
September 20-22 Entry Counts, 2013

	Cloudy 20 Friday 9/20/13	Cloudy 20 Saturday 9/21/13	Cloudy 20 Sunday 9/22/13	Friday/Sunday 9/20/13 to 9/22/13	Friday/Sunday 9/21/13 to 9/23/13	Friday/Sunday 9/20/13 to 9/25/13	Friday/Sunday 9/24/13 to 9/26/13	Friday/Sunday 9/25/13 to 9/27/13	Friday/Sunday 9/26/13 to 9/28/13	Friday/Sunday 9/27/13 to 9/29/13	Friday/Sunday 9/28/13 to 9/30/13
Gate Counts	63	114	60	228	268	158	456	378	411	381	381
Vehicle With Trailer											
Single Jet	8	26	15	49	60	36	100	67	67	67	67
Double Jet	5	24	16	47	64	40	111	107	107	107	107
Triple Jet	2	2	0	4	2	2	6	4	4	4	4
Single Jet	1	6	2	11	10	11	32	29	29	29	29
Multiple Jet	1	2	3	6	20	8	52	27	27	27	27
Boatless	1	2	1	4	4	7	21	11	11	11	11
Total	18	63	37	120	158	98	267	204	204	204	204

**Difference from gate count to actual is due to entries when no gate attendant on duty.

Embarcadero Marina
September 27-29 Entry Counts, 2013

	Sun '13		Sun '13		Friday/Sunday		Friday/Sunday		Friday/Sunday		Friday/Sunday	
	Friday 9/27/13	Saturday 9/28/13	Sunday 9/29/13	Sunday 9/29/13	9/27/13 to 9/29/13	9/28/13 to 9/29/13	9/28/13 to 9/29/13	9/29/13 to 10/1/13	10/1/13 to 10/3/13	10/3/13 to 10/5/13	10/5/13 to 10/7/13	10/7/13 to 10/9/13
Gate Count	60	136	104		208	289	235	292	329		257	376
Vehicle With Trailer												
Single Axle	1	28	37		64	31	62	63	63		36	36
Double Axle	8	26	26		60	54	69	63	64		34	34
Single Axle	1	1	1		4	2	2	4	4		2	2
Single Axle	1	1	1		3	2	2	3	3		2	2
Multiple Axle	1	11	14		26	24	13	13	13		11	11
Trailer	1	6	6		1	7	7	8	8		5	5
Total	23	67	72		189	189	172	163	220		167	220

**Difference from gate count to actual is due to entries where no gate attendant on duty

Enrollment Matrix
July 13 to Entry Course, 2014

	Class/Qu 77	Class/Qu 77	Class/Qu 77	Prereq/Qu/Sec	Prereq/Qu/Sec	Prereq/Qu/Sec	Prereq/Qu/Sec	Prereq/Qu/Sec	Prereq/Qu/Sec	Prereq/Qu/Sec	Prereq/Qu/Sec
	Section 11/1/14	Section 11/1/14	Section 11/1/14	11/1/14 to 11/1/14	11/1/14 to 11/1/14	11/1/14 to 11/1/14	11/1/14 to 11/1/14	11/1/14 to 11/1/14	11/1/14 to 11/1/14	11/1/14 to 11/1/14	11/1/14 to 11/1/14
Class Count	44	44	44	360	351	246	202	505	430	448	126
Enrollment	6	44	44	34	30	36	30	150	150	150	150
Enrollment	1	43	34	61	51	70	110	110	110	110	110
Enrollment	1	0	2	1	2	2	4	4	4	4	4
Enrollment	1	30	30	30	40	10	40	40	40	40	40
Enrollment	0	13	30	26	27	0	40	70	70	70	70
Enrollment	0	2	11	11	11	4	4	4	4	4	4
Total	101	101	101	248	248	273	248	463	463	463	463

*Difference from gis count is due to entries when no gis record on file.

Estacioneros Marino
Jul 28-31 Entry Counts 2014

Entry Count	Check/Post TT			Friday/June	Friday/June	Friday/June	Friday/June	Friday/June	Friday/June	Friday/June	Friday/June
	Friday 7/25/14	Saturday 7/26/14	Sunday 7/27/14	7/28/14 to 7/29/14	7/28/13 to 7/29/13	7/29/13 to 7/30/13	7/30/13 to 7/31/13	7/31/13 to 8/1/13	8/1/13 to 8/2/13	8/2/13 to 8/3/13	8/3/13 to 8/4/13
Vehicle Entry	120	201	130	501	221	252	420	251	198	400	400
Vehicle Exit	11	10	11	32	17	6	10	10	10	10	10
Tricycle Entry	11	10	10	31	16	5	9	9	9	9	9
Tricycle Exit	1	1	1	3	2	1	2	2	2	2	2
Handicapped	1	1	1	3	2	1	2	2	2	2	2
Other	1	1	1	3	2	1	2	2	2	2	2
Total	133	224	154	573	259	275	444	274	232	424	424

**Difference from gate count is due to entries when no gate attendant on duty.

Embarcadero Marina
July 25-27 Entry Counts, 314

	Cloudy/Sun 77 Friday 7/25/14	Cloudy/Sun 77 Saturday 7/26/14	Cloudy/Sun 77 Sunday 7/27/14	Friday/Sunday 7/25/14 to 7/27/14	Friday/Sunday 7/26/13 to 7/28/13	Friday/Sunday 7/21/12 to 7/23/12	Friday/Sunday 7/29/11 to 7/31/11	Friday/Sunday 7/26/2010 to 8/1/20	Friday/Sunday 7/16/09 to 8/2/09	Friday/Sunday 8/1/08 to 8/3/08	Friday/Sunday 8/2/07 to 8/5/07
Gate Count	134	202	133	369	369	369	369	369	369	369	369
Embarkation Trailer	20	50	35	105	105	71	36	65	65	144	
Single Air	22	43	49	114	114	63	29	65	65	144	
Trailer Air	0	0	1	1	1	4	3	4	4	5	
Single St	1	14	5	20	29	50	13	36	36	47	
Multiplies	1	6	2	9	14	11	11	11	11	40	
Subtot	1	0	2	3	3	8	4	4	4	11	
Total	48	113	94	255	257	208	109	181	181	401	

**Difference from gate count to actual is due to entries when no gate attendant on duty.

Embroiders Maria
August 3-3 Entry Counts 2014

	Cloudy/Sun 77	Cloudy/Sun 77	Cloudy/Sun 77	Friday/Sunday	Friday/Sunday	Friday/Sunday	Friday/Sunday	Friday/Sunday	Friday/Sunday	Friday/Sunday	Friday/Sunday
	Friday 8/1/14	Saturday 1/2/14	Sunday 8/2/14	8/1/13 to 8/2/14	8/2/13 to 8/1/14	8/1/12 to 8/2/13	8/6/11 to 8/7/11	8/6/10 to 8/9/10	8/7/09 to 8/10/09	8/6/08 to 8/11/08	8/18/07 to 8/23/07
Gate Count	40	141	89	300	281	428	401	417	401	476	474
Instruction Trainer											
Single A/c	11	33	26	70	77	200	81	300	107		
Cloudline	28	22	22	63	70	130	118	98	101		
Trainer A/c	3	0	0	0	0	0	0	0	0		
Single B/c	2	10	10	22	41	36	10	20	40		
Technicians	4	12	10	21	21	0	0	70	20		
StarLine	0	0	0	0	0	0	0	0	0		
Total	48	178	138	387	411	637	401	578	369		

**Difference from gate count to actual is due to entries with no gate attendant on duty.

Embarcadero Marina
August 9-30 Entry Counts, 2014

	Cloud/Fair 77	Cloud/Fair 77	Cloud/Fair 77	Frid/Sun/Sat	Frid/Sun/Sat	Frid/Sun/Sat	Frid/Sun/Sat	Frid/Sun/Sat	Frid/Sun/Sat	Frid/Sun/Sat	Frid/Sun/Sat
	8/9/14-8/11/14	8/12/14-8/14/14	8/15/14-8/17/14	8/18/14-8/19/14	8/20/14-8/21/14	8/22/14-8/23/14	8/24/14-8/25/14	8/26/14-8/27/14	8/28/14-8/29/14	8/30/14-8/31/14	8/31/14-8/31/14
Gate Count	131	213	193	111	205	271	279	332	424	426	543
Vehicle With Trailer											
Single Motor	74	20	41	66	67	150	193	187	145	145	
Double Motor	11	20	36	7	14	100	10	76	116	116	
Trailer Only	1	2	0	3	7	9	9	4	4	13	
Single M	0	0	12	21	30	14	46	11	19	19	
Double Motor	0	0	13	22	21	36	31	31	40	40	
Trailer Only	0	0	0	1	2	0	4	4	4	4	
Total	21	59	105	114	111	261	254	254	254	254	

**Difference from gate count to actual is due to entries when no gate attendant on duty.

Embassadors Marina
August 25-27 Entry Counts, 2014

	Thursday 8/21/14	Friday 8/22/14	Saturday 8/23/14	Friday-Saturday 8/22/14 to 8/23/14	Friday-Saturday 8/23/14 to 8/24/14	Friday-Saturday 8/24/14 to 8/25/14	Friday-Saturday 8/25/14 to 8/26/14	Friday-Saturday 8/26/14 to 8/27/14	Friday-Saturday 8/27/14 to 8/28/14	Friday-Saturday 8/28/14 to 8/29/14	Friday-Saturday 8/29/14 to 8/30/14
Embassadors	14	26	30	30	35	35	23	23	30	24	24
Embassadors with Trailer	8	30	36	34	35	35	23	23	30	24	24
Embassadors	12	24	28	28	33	33	20	20	26	21	21
Embassadors	1	3	4	3	4	4	3	3	4	3	3
Embassadors	1	5	3	3	3	4	3	3	3	3	3
Embassadors	0	0	0	0	0	0	0	0	0	0	0
Embassadors	0	1	1	1	2	3	1	1	1	1	1
Embassadors	30	30	36	34	35	35	23	23	30	24	24

*Difference from the count to actual is due to entries which require attendant on duty.

Embarkados Marina
August 22-24 Entry Counts, 2014

	Double/Sun 77 Friday 8/22/14	Double/Sun 77 Saturday 8/23/14	Cloud/Sun 77 Sunday 8/24/14	Friday/Sunday 8/22/14 to 8/24/14	Friday/Sunday 8/29/13 to 8/25/13	Friday/Sunday 8/24/12 to 8/26/12	Friday/Sunday 8/26/11 to 8/28/11	Friday/Sunday 8/27/10 to 8/29/10	Friday/Sunday 8/28/09 to 8/30/09	Friday/Sunday 8/29/08 to 8/31/08	Friday/Sunday 8/31/07 to 9/2/07
Gate Count	44	100	130	282	262	292	361	243	503	798	1,246
Vehicle/Alibi Trailer											
Single Site	6	22	33	61	76	135	53	53	126		
Double Site	4	34	24	62	66	103	54	53	125		
Trailer Site	2	3	0	5	2	2	3	4	5		
Single St	0	25	0	25	21	20	43	24	88		
Vehicle/Alibi	0	0	0	0	0	0	0	0	0		
Alibi/Trailer	0	0	0	0	0	0	0	0	0		
Trailer	0	0	0	0	0	0	0	0	0		
Total	21	79	74	173	155	260	239	200	440		

*Difference from gate count to actual is due to entries when agents attend on duty.

Embarcadero Marine
August 29-September 1 Entry Query, 2014

	Check/Tot 26	Check/Tot 20	Check/Tot 20	Check/Tot 20	Friday-Monday	Friday-Monday	Friday-Monday	Friday-Monday	Friday-Monday	Friday-Monday	Friday-Monday
	Friday 8/29/14	Saturday 8/30/14	Sunday 8/31/14	Monday 9/1/14	8/29/14 to 9/1/14	8/30/14 to 9/1/14	8/31/14 to 9/1/14	9/1/14 to 9/2/14	9/2/14 to 9/3/14	9/3/14 to 9/4/14	9/4/14 to 9/5/14
EMR Entry	40	100	203	205	205	212	100	400	328	420	505
Multi-Block Trader											
Bank Fee	8	32	40	40	110	324	117	80	171	171	
Bank Fee	13	28	35	35	112	211	214	103	100	102	
Bank Fee	3	4	5	5	16	33	4	10	9	14	
Bank Fee	3	13	17	17	42	53	57	17	43	76	
Bank Fee	2	10	13	13	49	83	41	31	40	85	
Bank Fee	4	11	15	15	37	4	4	11	11	11	
Total	148	205	110	110	323	639	284	218	295	518	

**Difference from gate count to actual is due to entries where gate attendant on duty.

Embassadors Marina
September 5-7 Entry Counts, 2014

	Sun 8S	Sun 8S	Sun 8S	Friday-Sunday	Friday-Sunday	Friday-Sunday	Friday-Sunday	Friday-Sunday	Friday-Sunday	Friday-Sunday	Friday-Sunday
	Friday 9/5/14	Saturday 9/6/14	Sunday 9/7/14	9/5/14 to 9/7/14	9/6/14 to 9/8/14	9/7/14 to 9/9/14	9/9/14 to 9/11/14	9/10/14 to 9/12/14	9/14/09 to 9/13/09	9/13/09 to 9/14/09	9/14/09 to 9/15/09
Gate Count	114	174	213	263	307	263	285	214	338	477	246
Sea & White Trailer											
Single Mile	13	17	36	66	70	70	46	41			
Double Mile	21	23	24	63	63	37	49	33			
Trailer Mile	0	0	0	0	0	0	0	0			
Single 1/2	0	0	0	17	49	34	17	24			
Halfway Mile	0	0	11	20	34	29	0	24			
StarBoard	0	0	0	0	0	4	1	4			
Total	34	40	71	106	225	200	130	106			

**Difference from gate count to actual is due to entries with no gate attendant on duty.

Enrollment Matrix
September 2014 Entry Counts, 2014

Site/Element	Site #5			Site #6			Site #8			Enrollment	Enrollment
	Enrollment 9/1/14	Enrollment 9/15/14	Enrollment 9/30/14	Enrollment 9/1/14 to 9/15/14	Enrollment 9/15/14 to 9/30/14	Enrollment 9/1/14 to 9/30/14	Enrollment 9/1/14 to 9/15/14	Enrollment 9/15/14 to 9/30/14	Enrollment 9/1/14 to 9/30/14		
Enrollment	128	26	152	428	235	228	174	202	388	447	226
Enrollment With Transfer	30	26	26	61	55	66	52	38	38	74	74
Enrollment	3	13	34	34	31	73	31	42	42	84	84
Enrollment	2	4	12	4	2	4	3	8	8	16	16
Enrollment	3	4	12	11	36	26	18	12	12	12	12
Enrollment	3	7	9	14	23	22	12	12	12	24	24
Enrollment	1	0	0	1	0	0	0	0	0	0	0
Enrollment	240	63	72	362	140	200	150	110	200	447	226

*Difference from gk count is due to entries which register attendance on day

Embarcadero Marina
September 12-14 Entry Counts, 2014

	Sun 09 Friday 9/12/14	Sun 10 Saturday 9/13/14	Sun 10 Sunday 9/14/14	Friday-Sunday 9/12/14 to 9/14/14	Friday-Sunday 9/12/13 to 9/21/13	Friday-Sunday 9/14/13 to 9/23/13	Friday-Sunday 9/20/13 to 9/29/13	Friday-Sunday 9/17/12 to 9/26/12	Friday-Sunday 9/24/12 to 9/30/12	Friday-Sunday 9/21/11 to 9/28/11	Friday-Sunday 9/18/11 to 9/25/11
Gate Count	138	150	133	421	229	529	176	202	369	447	176
Vehicle With Trailer											
Single Motor	10	20	20	61	51	60	52	60	77		
Double Motor	2	2	4	8	38	7	52	4	18		
Tow/Haul	2	4	12	18	2	6	3	4	11		
LongHaul	1	4	12	17	1	24	28	18	53		
DA-Race/Club	3	7	19	39	23	33	22	18	76		
Unknown	1	3	3	7	3	6	3	6	7		
Total	24	63	71	127	140	208	158	127	242		

* Difference from gate count to actual is due to entries where gate attendant on duty.

Exhibit D
Data Point Harbor Boat Launch Ramp Parking - Summer Weekend and Holiday Utilization - 2010

	Friday July 2, 2010	Saturday July 3, 2010	Sunday July 4, 2010	Monday July 5, 2010	Friday July 9, 2010	Saturday July 10, 2010	Sunday July 11, 2010	Friday July 16, 2010	Saturday July 17, 2010	Sunday July 18, 2010	Friday ¹ July 23, 2010	Saturday ¹ July 24, 2010	Sunday ¹ July 25, 2010	Friday July 30, 2010
Single Axle	26	42	28	43	9	37	44	29	75	66	14	42	38	16
Double Axle	47	61	20	40	13	40	35	24	53	36	16	40	29	10
Triple Axle	4	6	4	2	2	4	4	4	2	3	2	3	2	2
Jet Ski	19	16	20	25	14	21	19	68	40	49	10	29	33	10
Sail Boat	0	1	1	3	1	4	1	1	1	2	2	2	1	0
After Hours Entry ²	26	58	33	10	6	10	20	52	24	32	25	27	29	4
Totals	122	202	106	123	45	116	123	178	200	188	79	143	132	42

Data includes weekends: Friday - Sunday, in the months of July - September, 2010 (including Independence Day & Labor Day). Launch Ramp entry counts provided by the Embarcadero Marina Operator, Vintage Marina Partners
 There were a total of 41 days.
 The highest entry day was 231, Sunday, September 26.
 The lowest entry day was 42, Friday, July 30 & Friday, September 10.

Entry Daily Range	# of Days	Percentage
0-50	3	7%
51-100	13	32%
101-150	16	39%
151-200	7	17%
201-250	2	5%
251-300	0	0%
Total	41	100%

Note 1 - July 23 - 25 numbers are based on averages. Actual numbers not available.
 Note 2 - Afterhours entries are typically fishing boats, which are typically double axle trailers.

Exhibit D
Data Point Harbor Boat Launch Ramp Parking - Summer Weekend and Holiday Utilization - 2010

Saturday July 31, 2010	Sunday August 1, 2010	Friday August 6, 2010	Saturday August 7, 2010	Sunday August 8, 2010	Friday August 13, 2010	Saturday August 14, 2010	Sunday August 15, 2010	Friday August 20, 2010	Saturday August 21, 2010	Sunday August 22, 2010	Friday August 27, 2010	Saturday August 28, 2010	Sunday August 29, 2010	Friday September 3, 2010
12	48	14	47	39	21	41	10	14	41	40	19	20	21	15
45	32	16	43	27	9	34	14	10	43	19	19	29	31	10
13	2	3	1	2	2	1	1	1	4	2	2	2	1	2
22	39	12	19	24	7	28	14	11	33	17	7	19	21	17
11	1	2	0	1	0	3	1	1	0	2	1	1	1	0
14	21	70	59	26	14	26	32	6	40	43	19	11	21	9
110	139	117	169	121	53	137	138	51	159	158	58	82	111	53

Exhibit D
Dana Point Harbor Boat Launch Ramp Parking - Summer Weekend and Holiday Utilization - 2010

Saturday	Sunday	Monday	Friday	Saturday	Sunday	Friday	Saturday	Sunday	Friday	Saturday	Sunday	Total	%	
September 4, 2010	September 5, 2010	September 6, 2010	September 10, 2010	September 11, 2010	September 16, 2010	September 17, 2010	September 18, 2010	September 19, 2010	September 24, 2010	September 25, 2010	September 26, 2010			
46	38	34	6	26	33	2	8	18	9	53	47	Single Axle	1189	27%
41	36	21	10	19	8	8	5	16	15	36	46	Double Axle	1153	24%
2	3	2	0	2	0	4	2	0	3	5	3	Triple Axle	94	2%
30	40	15	32	14	22	7	11	16	6	41	90	Jet Ski	1053	22%
1	0	1	2	0	2	2	5	1	0	4	1	Sail Boat	53	1%
17	91	23	12	21	25	32	8	15	33	22	44	After Hours	1073	23%
132	148	96	42	82	90	55	79	68	64	161	231		4715	

77

Exhibit D
Dana Point Harbor Boat Launch Ramp Parking - Summer Weekend and Holiday Utilization - 2011

	Friday	Saturday	Sunday	Monday	Friday	Saturday	Sunday	Friday	Saturday	Sunday	Friday	Saturday	Sunday	Friday
	July 1, 2011	July 2, 2011	July 3, 2011	July 4, 2011	July 8, 2011	July 9, 2011	July 10, 2011	July 15, 2011	July 16, 2011	July 17, 2011	July 22, 2011	July 23, 2011	July 24, 2011	July 29, 2011
Single Axle	15	52	76	33	12	39	52	13	33	45	33	51	60	14
Double Axle	27	76	97	20	8	47	39	16	49	50	20	60	32	7
Triple Axle	4	9	4	2	1	4	2	0	2	4	4	6	1	1
Jet Ski	26	38	53	27	12	24	31	12	29	44	41	36	46	16
Sail Boat	2	1	1	0	0	4	1	0	3	0	1	1	2	3
After Hour Entry ¹	51	26	49	47	42	24	24	16	14	4	41	15	20	28
Totals	125	202	280	129	75	142	149	57	130	145	140	169	161	63

Data includes weekends; Friday - Sunday, in the months of July - September 2010 (including Independence Day & Labor Day). Launch Ramp entry counts provided by the Embarcadero Marina Operator, Vintage Marina Partners
There were a total of 41 days.
The highest entry day was 280, Sunday July 3.
The lowest entry day was 24, Friday, September 16.

Entry Count Summary		
Entry Daily Range	# of Days	Percentage
0-50	5	12%
51-100	15	37%
101 - 150	15	37%
151 - 200	3	7%
201 - 250	2	5%
251 - 300	1	2%
Total	41	100%

Note 1 - After hours entries are typically fishing boats, which are typically double axle trailers.

78

Exhibit D
Dana Point Harbor Boat Launch Ramp Parking - Summer Weekend and Holiday Utilization - 2011

Saturday	Sunday	Friday	Saturday	Sunday	Friday	Saturday	Sunday	Friday	Saturday	Sunday	Friday	Saturday
July 30, 2011	July 31, 2011	August 1, 2011	August 6, 2011	August 7, 2011	August 12, 2011	August 13, 2011	August 14, 2011	August 19, 2011	August 20, 2011	August 21, 2011	August 26, 2011	August 27, 2011
39	25	10	39	42	11	39	55	6	31	52	6	41
50	22	16	56	39	12	34	37	17	27	42	12	42
2	0	2	3	2	1	1	2	1	0	2	2	1
28	20	13	29	33	3	34	21	8	27	21	12	39
1	0	0	2	0	1	1	2	1	1	3	3	1
20	16	75	94	8	12	13	0	21	3	7	23	37
140	83	116	223	124	40	122	117	54	89	127	58	161

79

Exhibit D
Dana Point Harbor Boat Launch Ramp Parking - Summer Weekend and Holiday Utilization - 2011

Sunday	Friday	Saturday	Sunday	Monday	Friday	Saturday	Sunday	Friday	Saturday	Sunday
August 28, 2011	September 2, 2011	September 3, 2011	September 4, 2011	September 5, 2011	September 9, 2011	September 10, 2011	September 11, 2011	September 16, 2011	September 17, 2011	September 18, 2011
46	11	29	22	18	9	15	22	7	19	26
40	10	35	29	29	7	16	26	12	16	24
2	3	2	4	1	2	2	0	0	1	0
30	9	33	23	7	3	4	14	3	20	32
2	1	3	5	2	0	0	1	0	1	2
26	27	12	8	6	14	6	25	2	8	1
146	61	114	91	63	34	43	88	24	65	85

80

Exhibit D
Dana Point Harbor Boat Launch Ramp Parking - Summer Weekend and Holiday Utilization - 2011

Friday	Saturday	Sunday		Total	%
September 23, 2011	September 24, 2011	September 25, 2011			
0	16	8	Single Axle	1172	27%
2	23	15	Double Axle	1238	28%
0	1	1	Triple Axle	79	2%
3	9	13	Jet Ski	928	21%
0	5	2	Sail Boat	59	1%
23	22	15	After Hours	917	21%
28	76	54		4393	

81

Exhibit D
Dana Point Harbor Boat Launch Ramp Parking - Summer Weekend and Holiday Utilization - 2012

	Wednesday	Thursday	Friday	Saturday	Sunday	Friday	Saturday	Sunday	Friday	Saturday	Sunday	Friday	Saturday	Sunday	Friday
	July 4, 2012	July 5, 2012	July 6, 2012	July 7, 2012	July 8, 2012	July 13, 2012	July 14, 2012	July 15, 2012	July 20, 2012	July 21, 2012	July 22, 2012	July 27, 2012	July 28, 2012	July 29, 2012	August 3, 2012
Single Axle	30	14	11	47	44	12	35	39	11	41	38	13	35	23	17
Double Axle	29	18	9	42	34	17	36	26	15	43	32	9	38	21	30
Triple Axle	1	2	1	1	1	0	2	1	0	5	1	0	3	1	0
Jet Ski	35	4	8	22	30	5	27	23	11	20	41	8	47	34	21
Sail Boat	1	2	2	0	1	0	2	2	2	1	3	1	3	1	1
After Hours Entry ¹	43	14	24	14	18	26	1	2	31	20	17	26	0	52	60
Totals	139	54	55	126	128	60	103	93	70	130	132	57	119	132	129

Data includes weekends; Friday - Sunday, in the months of July - September, 2010 (including Independence Day & Labor Day). Launch Ramp entry counts provided by the Embarcadero Marina Operator, Vintage Marina Partners
There were a total of 42 days.
The highest entry day was 172, Saturday, August 11.
The lowest entry day was 51, Friday, September 28.

Entry Count Summary		
Entry Daily Range	# of Days	Percentage
0-50	0	0%
51-100	14	33%
101 - 150	21	50%
151 - 200	7	17%
201 - 250	0	0%
251 - 300	0	0%
Total	42	

Note 1 - After hours entries are typically fishing boats, which are typically double axle trailers.

82

Exhibit D
 Dana Point Harbor Boat Launch Ramp Parking - Summer Weekend and Holiday Utilization - 2012

Saturday	Sunday	Friday	Saturday	Sunday	Friday	Saturday	Sunday	Friday	Saturday	Sunday	Friday	Saturday
August 4, 2012	August 5, 2012	August 10, 2012	August 11, 2012	August 12, 2012	August 17, 2012	August 18, 2012	August 19, 2012	August 24, 2012	August 25, 2012	August 26, 2012	August 31, 2012	September 1, 2012
44	39	14	40	42	8	42	45	14	55	56	11	39
48	42	18	42	40	13	42	61	15	41	42	25	53
4	5	2	5	2	0	4	2	0	2	0	0	1
23	35	7	39	32	11	33	46	3	16	30	12	31
4	2	2	1	0	2	0	1	2	1	3	1	1
39	11	29	45	27	26	36	3	32	41	17	44	33
162	134	72	172	143	60	157	158	66	156	148	93	158

Exhibit D
Dana Point Harbor Boat Launch Ramp Parking - Summer Weekend and Holiday Utilization - 2012

Sunday	Monday	Friday	Saturday	Sunday	Friday	Saturday	Sunday	Friday	Saturday	Sunday
September 2, 2012	September 3, 2012	September 7, 2012	September 8, 2012	September 9, 2012	September 14, 2012	September 15, 2012	September 16, 2012	September 21, 2012	September 22, 2012	September 23, 2012
43	34	10	29	31	7	38	21	7	31	27
40	36	10	45	37	10	36	25	17	38	39
3	2	0	0	1	1	1	4	0	1	1
30	21	5	17	41	8	29	23	4	24	24
4	0	2	2	0	2	2	1	1	3	2
38	38	54	46	21	47	38	27	23	11	15
158	131	81	139	131	75	144	101	52	108	108

84

Exhibit D
Dana Point Harbor Boat Launch Ramp Parking - Summer Weekend and Holiday Utilization - 2012

Friday	Saturday	Sunday		Total	%
September 28, 2012	September 29, 2012	September 29, 2012			
7	33	30	Single Axle	1207	26%
7	21	26	Double Axle	1263	27%
0	1	2	Triple Axle	63	1%
4	17	30	Jet Ski	926	20%
1	3	2	Sail Boat	70	1%
32	50	23	After Hours	1194	25%
51	125	113		4723	

85

Exhibit D
Dana Point Harbor Boat Launch Ramp Parking - Summer Weekends and Holiday Utilization - 2013

	Thursday	Friday	Saturday	Sunday	Friday	Saturday	Sunday	Friday	Saturday	Sunday	Friday	Saturday	Sunday	Friday	Saturday
	July 4, 2013	July 5, 2013	July 6, 2013	July 7, 2013	July 12, 2013	July 13, 2013	July 14, 2013	July 19, 2013	July 20, 2013	July 21, 2013	July 26, 2013	July 27, 2013	July 28, 2013	August 2, 2013	August 3, 2013
Single Axle	50	23	61	35	10	45	35	8	34	22	3	52	33	5	36
Double Axle	25	18	44	23	5	43	34	11	27	25	13	40	17	10	38
Triple Axle	3	3	4	2	0	2	0	4	4	2	1	3	1	0	1
Jet Ski	27	18	36	18	4	26	38	5	12	8	4	20	19	6	29
Sail Boat	0	2	0	1	0	1	2	1	2	1	1	2	0	1	1
After Hours Entry ¹	72	39	9	39	24	26	18	40	33	19	24	11	21	13	22
Totals	177	103	154	118	43	143	127	69	112	77	46	128	91	35	122

Data includes weekends; Friday - Sunday, in the months of July - September, 2010 (including Independence Day & Labor Day). Launch Ramp entry counts provided by the Embarcadero Marina Operator, Vintage Marina Partners
 There were a total of 41 days.
 The highest entry day was 193, Saturday, August 10.
 The lowest entry day was 35, Friday, August 2.

Entry Daily Range	# of Days	Percentage
0-50	6	15%
51-100	11	27%
101 - 150	19	46%
151 - 200	5	12%
201 - 250	0	0%
251 - 300	0	0%
Total	41	

Note 1 - After hours entries are typically fishing boats, which are typically double axle trailers.

Exhibit D
Dana Point Harbor Boat Launch Ramp Parking - Summer Weekends and Holiday Utilization - 2013

Sunday	Friday	Saturday	Sunday	Friday	Saturday	Sunday	Friday	Saturday	Sunday	Friday	Saturday	Sunday
August 4, 2013	August 9, 2013	August 10, 2013	August 11, 2013	August 16, 2013	August 17, 2013	August 18, 2013	August 23, 2013	August 24, 2013	August 25, 2013	August 30, 2013	August 31, 2013	September 1, 2013
36	17	19	31	11	38	37	7	42	30	15	39	37
33	6	25	23	7	32	26	8	27	14	18	34	30
27	3	3	1	1	6	2	2	0	1	4	6	6
27	4	19	28	7	22	19	10	23	24	4	29	25
11	0	2	0	0	1	1	1	3	1	2	3	3
30	49	125	38	24	24	29	17	21	34	35	33	61
129	79	193	121	50	123	114	45	116	102	74	141	160

Exhibit D
Dana Point Harbor Boat Launch Ramp Parking - Summer Weekend and Holiday Utilization - 2013

Monday	Friday	Saturday	Sunday	Friday	Saturday	Sunday	Friday	Saturday	Sunday	Friday
September 2, 2013	September 6, 2013	September 7, 2013	September 8, 2013	September 13, 2013	September 14, 2013	September 15, 2013	September 20, 2013	September 21, 2013	September 22, 2013	September 27, 2013
28	14	31	25	3	27	21	6	26	15	7
21	11	30	22	3	21	9	7	24	16	8
0	1	4	2	1	1	0	2	2	0	1
17	5	38	40	4	23	30	2	10	5	4
1	0	0	0	0	1	2	1	3	1	1
48	37	61	46	33	17	30	34	51	23	59
115	68	164	135	44	90	92	52	116	60	80

88

Exhibit D
Dana Point Harbor Boat Launch Ramp Parking - Summer Weekend and Holiday Utilization - 2013

Saturday	Sunday	Total	%
September 28, 2013	September 29, 2013		
36	25	1077	25%
26	26	875	20%
2	1	79	2%
23	20	732	17%
0	0	38	1%
87	37	1489	35%
174	104	4290	

89

Exhibit D
Dana Point Harbor Boat Launch Ramp Parking - Summer Weekend and Holiday Utilization - 2014

	Friday	Saturday	Sunday	Friday	Saturday	Sunday	Friday	Saturday	Sunday	Friday	Saturday	Sunday	Friday	Saturday
	July 4, 2014	July 5, 2014	July 6, 2014	July 11, 2014	July 12, 2014	July 13, 2014	July 18, 2014	July 19, 2014	July 20, 2014	July 25, 2014	July 26, 2014	July 27, 2014	August 1, 2014	August 2, 2014
Single Axle	47	46	36	6	44	44	8	58	37	20	50	35	11	33
Double Axle	35	38	24	8	41	34	11	52	43	22	47	49	18	22
Triple Axle	7	3	2	1	0	2	2	0	2	0	0	1	1	3
Jet Ski	41	34	37	4	23	29	8	23	22	4	18	7	6	22
Sail Boat	1	1	0	0	2	0	1	1	0	1	0	2	0	1
After Hours Entry ¹	71	36	49	46	39	57	90	73	72	87	94	99	60	64
Totals	202	158	148	65	149	156	120	207	176	134	209	193	96	145

Data includes weekends; Friday - Sunday, in the months of July - September, 2010 (including Independence Day & Labor Day). Launch Ramp entry counts provided by the Embarcadero Marina Operator, Vintage Marina Partner. There were a total of 40 days. The highest entry day was 213, Saturday, August 9. The lowest entry day was 46, Friday, August 22.

Entry Count Summary		
Entry Daily Range	# of Days	Percentage
0-50	1	0.025
51-100	8	0.2
101 - 150	16	0.4
151 - 200	11	0.275
201 - 250	4	0.1
251 - 300	0	0
Total	40	

Note 1 - After hours entries are almost always fishing boats which are almost always double axle trailers.

Exhibit D
Dana Point Harbor Boat Launch Ramp Parking - Summer Weekend and Holiday Utilization - 2014

Sunday	Friday	Saturday	Sunday	Friday	Saturday	Sunday	Friday	Saturday	Sunday	Friday	Saturday	Sunday
August 3, 2014	August 8, 2014	August 9, 2014	August 10, 2014	August 15, 2014	August 16, 2014	August 17, 2014	August 22, 2014	August 23, 2014	August 24, 2014	August 29, 2014	August 30, 2014	August 31, 2014
26	5	20	41	8	39	30	6	22	33	8	22	40
21	11	20	39	12	34	19	4	34	24	13	27	37
1	1	2	0	1	3	6	2	1	0	3	4	0
15	4	15	25	7	13	20	7	22	16	5	22	40
0	0	1	0	0	1	1	1	0	1	0	0	1
26	84	155	88	36	73	86	26	29	55	69	72	65
89	105	213	193	64	163	162	46	108	129	98	147	133

Exhibit D
Dana Point Harbor Boat Launch Ramp Parking - Summer Weekend and Holiday Utilization - 2014

Monday	Friday	Saturday	Sunday	Friday	Saturday	Sunday	Friday	Saturday	Sunday
September 1, 2014	September 5, 2014	September 6, 2014	September 7, 2014	September 12, 2014	September 13, 2014	September 14, 2014	September 19, 2014	September 20, 2014	September 21, 2014
42	13	17	30	10	25	26	3	37	19
35	15	23	24	7	27	24	6	35	17
1	0	2	0	2	4	0	2	1	0
40	0	18	19	4	11	21	5	14	20
1	0	1	0	1	0	0	1	3	0
65	88	73	30	107	91	61	109	68	19
184	116	134	103	125	158	132	126	158	75

92

Exhibit D
Dana Point Harbor Boat Launch Ramp Parking - Summer Weekend and Holiday Utilization - 2014

Friday	Saturday	Sunday		Total	%
September 26, 2014	September 27, 2014	September 28, 2014			
10	21	15	SingleAxle	1043	19%
13	38	16	DoubleAxle	999	18%
1	0	3	TripleAxle	64	1%
7	8	6	Jet Ski	664	12%
0	1	0	Sail Boat	24	0%
58	63	47	After Hours	2675	49%
89	111	89		5469	

93