



U.S. Department  
of Homeland Security  
**United States  
Coast Guard**

---

## LOCAL NOTICE TO MARINERS

**District: 11**

**Week: 15/23**

CORRESPONDENCE TO:  
COMMANDER  
DISTRICT ELEVEN (DPW)  
COAST GUARD ISLAND BUILDING 50-2  
ALAMEDA, CA 94501-5100

REFERENCES: COMDTPUB P16502.6, Light List Volume VI, 2017 Edition, U.S. Chart No.1 12th Edition, and Coast Pilot Volume 7 49th Edition. These publications, along with corrections, are available at: <https://nauticalcharts.noaa.gov/>

BROADCAST NOTICE TO MARINERS - Information concerning aids to navigation and waterway management promulgated through BNM HB-0006-23, SF-0073-23, LA-0035-23, and SD-0024-23 have been incorporated in this notice, or will continue if still significant.

---

### SECTION I - SPECIAL NOTICES

This section contains information of special concern to the Mariner.

#### SUBMITTING INFORMATION FOR PUBLICATION IN THE LOCAL NOTICE TO MARINERS

A complete set of guidelines with examples and contact information can be found at <http://www.pacificarea.uscg.mil/Our-Organization/District-11/Prevention-Division/LnmRequest/> or call Waterways Management Branch at 510-437-2929 or e-mail D11-SMB-D11-LNM@uscg.mil. Please provide all Local Notice to Mariners submissions 14 days prior to the start of operations

LNM: 17/21

#### BRIDGE INFORMATION- PROJECTS, DISCREPANCIES, CORRECTIONS & REGULATORY

For all bridge related issues, including lighting, operation, obstructions, construction, demolition, etc. contact the Eleventh Coast Guard District Bridge Administrator 24 hour cell phone at 510-219-4366. Flotsam may accumulate on and near bridge piers and abutments. Mariners should approach all bridges with caution. A vessel delay at a drawbridge may be reported to the District Bridge Administrator by telephone, or by using the Delay\_Report\_11-2017.pdf included in the Enclosures section of this Local Notice to Mariners.

#### BRIDGE INFORMATION-COMMUNICATIONS PROTOCOL-BENICIA/MARTINEZ UPRR BRIDGE- CARQUINEZ STRAIT

All mariners requiring a bridge lift at the Benicia-Martinez Union Pacific Railroad Bridge, mile 7.0, over the Carquinez Strait, California, should follow the protocol in the document entitled "Coordination of Communications for Union Pacific Railroad Lift Operations." Mariners can download a copy of the document by selecting the link BENICIA-MARTINEZ RR BRIDGE under the QUICK LINKS section at <https://www.pacificarea.uscg.mil/vtssf>.

#### CALIFORNIA – CALIFORNIA COAST-VOLUNTARY VESSEL SPEED REDUCTION

NOAA, U.S. Coast Guard and the Environmental Protection Agency request that all vessels 300 gross registered tons (GRT) or larger reduce speeds to 10 knots or less when transiting in the Vessel Speed Reduction off of San Francisco, Monterey, and Southern California from 1 May, 2023 until 15 December, 2023 to protect endangered whales. (See 2023 NOAA USCG EPA VSR.pdf in the enclosure section) These areas contain populations of endangered blue, humpback, and fin whales that are federally protected under the Federal Endangered Species Act (16 USC 1538 et seq.), the Marine Mammal Protection Act (to protect endangered whales 16 USC 1361 et seq.), and the National Marine Sanctuaries Act (16 USC 1431 et seq.). Vessels already transiting south of the northern Channel Islands are also encouraged to transit outside of the voluntary Extended Area to be avoided to reduce the overlap of ships and endangered whales. Please report any collisions with whales or any observed injured or dead whales to the U.S. Coast Guard on VHF Channel 16. NOAA is asking for the public's help in tracking whales. Please report sightings through Whale Alert, a free application available at <http://westcoast.whalealert.org/>. For more information, contact Sean Hastings at (805) 705-1790 or email at [sean.hastings@noaa.gov](mailto:sean.hastings@noaa.gov).

Charts: 18640 18680 18700 18720 18740

LNM: 15/23

#### CAUTION TO BE USED IN RELIANCE UPON AIDS TO NAVIGATION

The aids to navigation depicted on charts comprise a system of fixed and floating aids to navigation with varying degrees of reliability. Prudent mariners will not rely solely on any single aid to navigation, particularly a floating aid to navigation. With respect to buoys, the buoy symbol is used to indicate the approximate position of the buoy body and the sinker which secures the buoy to the seabed. The approximate position is used because of the practical limitations in positioning and maintaining buoys and their sinkers in precise geographical locations. These limitations include, but are not limited to, inherent imprecision in position fixing methods, prevailing atmospheric and sea conditions, slope of and the material making up the seabed, the fact that buoys are moored to sinkers by varying length of chain, and the fact that the buoy body and/or sinker positions are not under continuous surveillance, but are normally checked only during periodic maintenance visits which often occur more than a year apart. Due to the forces of nature, the position of the buoy body can be expected to shift inside and outside the charted symbol. The

mariner is also cautioned that buoys may be extinguished or sound signals may not function as the result of natural causes, collisions, or other accidents. For the foregoing reasons, a prudent mariner must not rely completely upon the position or operation of floating aids to navigation, but will also utilize bearings from fixed objects and aids to navigation on shore. Furthermore, a vessel attempting to pass close aboard always risks collision with a yawing buoy or with the obstruction that the buoy marks.

### NAVIGATION CENTER WEBSITE TRANSITION

The U.S. Coast Guard Navigation Center is going to transition the Navigation Center website to a new, enhanced version in the first quarter of 2022. As part of this transition, URLs will be updated across the site including URLs linked to PDFs. Therefore, once the transition is complete, legacy site URLs will no longer function, including bookmarked URLs and URLs used in automatic downloading of data and/or products. Outdated URLs will automatically redirect to the home page of the site, and from there you will be able to easily navigate to your preferred page.

Below are a few of the "old"/new URL pairs listed for your convenience. Please note that the new URLs will not be active until we launch the new website. Of course, once it is launched, the new URLs will be available for re-bookmarking. As a reminder, these are top level URLs that may contain additional links that you use.

This notice will be updated when the final launch date is determined and another notice will be issued to notify you when the site goes live. Questions/concerns may be directed to the NAVCENWebTEAM@uscg.mil.

#### Local Notices to Mariners (LNMs)

Current URLs: <https://www.navcen.uscg.gov/?pageName=lnmMain>

Replacement: <https://www.navcen.uscg.gov/local-notices-to-mariners-by-cg-district>

#### Light Lists Annual Publication

Current URLs: <https://navcen.uscg.gov/?pageName=lightLists>

Replacement: <https://www.navcen.uscg.gov/light-list-annual-publication>

#### Light List - Weekly

Current URLs: <https://navcen.uscg.gov/?pageName=lightListWeeklyUpdates>

Replacement: <https://www.navcen.uscg.gov/weekly-light-lists>

#### Light List - Corrections

Current URLs: <https://navcen.uscg.gov/?pageName=lightListCorrections>

Replacement: <https://www.navcen.uscg.gov/light-list-summary-of-corrections>

LNLM: 06/22

### NORTHERN CALIFORNIA-SAN FRANCISCO-MILE ROCKS LIGHT-REDUCED NOMINAL RANGE

Mile Rocks Light (LLNR 365) will have a temporarily reduced intensity of 5nm until further notice. Mariners are requested to transit the area with caution. For more details or comments contact LT Miranda Brumbaugh at 510-437-2978 or [Miranda.E.Brumbaugh@uscg.mil](mailto:Miranda.E.Brumbaugh@uscg.mil).

Charts: 18007 18010 18020 18022 18640 18649 18680

LNLM: 16/19

### SAFETY NOTICE - NAVIGATIONAL RANGE AND SECTOR LIGHTS ON ELECTRONIC CHARTS

"The U.S. Coast Guard has become aware that the Range and Sector Light Characteristic labels are not displayed on Electronic Navigational Charts (ENCs) when used in an Electronic Chart Display and Information System (ECDIS) due to limitations of the S-52 ECDIS display specification. Mariners may query the ENC data directly within ECDIS or refer to the Light List for complete information on Range and Sector Light Characteristics."

LNLM: 39/22

### SOUTHERN CALIFORNIA-SAN DIEGO BAY-MINIMIZE WAKE

The Navy Port Operations Manager requests that vessels slow to 7 kts when a vessel is moored in restricted area (33 CFR 334.865) located on the northeast side of North Island at 32-42-57N 117-11-22W, between San Diego Channel Lighted Buoy 20 (LLNR 1710) and San Diego Channel Lighted Buoy 22 (LLNR 1830). For more details or comments contact LT Rodriguez at 619-545-3232, [Rigoberto.rodriguez3@navy.mil](mailto:Rigoberto.rodriguez3@navy.mil).

Chart 18773

LNLM: 10/22

### SUBMITTING INFORMATION FOR PUBLICATION IN THE LOCAL NOTICE TO MARINERS

Coast Guard District Eleven Waterways upgrade to E-Mail capabilities. All future requests for article submission in the District Eleven Local Notice to Mariners are requested to be E-Mailed to [D11-SMB-SMB-D11-LNM@uscg.mil](mailto:D11-SMB-SMB-D11-LNM@uscg.mil) at least two weeks prior to the operation. For more details or comments please contact District Eleven Waterways Management Branch at 510-437-2929 or e-mail [D11-SMB-D11-LNM@uscg.mil](mailto:D11-SMB-D11-LNM@uscg.mil). Coast Guard District Eleven requests all Local Notice to Mariners submissions be E-Mailed to our office at least 14 days prior to the start of operations for timely submittal and publication.

LNLM: 17/21

## SECTION II - DISCREPANCIES

This section lists all reported and corrected discrepancies related to Aids to Navigation in this edition. A discrepancy is a change in the status of an aid to navigation that differs from what is published or charted.

### DISCREPANCIES (FEDERAL AIDS)

LLNR	Aid Name	Status	Chart No.	BNM Ref.	LN M St	LN M End
5	Point Loma Light	SS IMCH	18773	SD-0001-23	04/23	
10	San Diego Bay Approach Lighted Whistle Buoy SD	RAC INOP	18772	SD-0070-22	38/22	
125	Long Beach Light	LT EXT	18751	LA-0148-20	49/20	
360	San Francisco Approach Lighted Whistle Buoy SF	RAC INOP	18649	SF-0040-22	17/22	
365	Mile Rocks Light	LT EXT	18649	SF-0099-22	44/22	
450	Point Cabrillo Light	REDUCED INT	18620	HB-0006-23	05/23	
545	Crescent City Harbor Lighted Whistle Buoy 2	LT EXT	18603	HB-0013-22	51/22	
1485	San Diego Bay Approach Lighted Whistle Buoy SD	RAC INOP	18772	SD-0070-22	38/22	
1493	San Diego Bay Approach Lighted Bell Buoy 4	LT IMCH	18772	SD-0074-22	41/22	
2295	Oceanside Breakwater Light 1	REDUCED INT	18758	SD-0080-22	44/22	
2635	Ship Rock Light	LT EXT	18757	LA-0095-21	26/21	
2641	Isthmus Cove Harbor Reefs Light	STRUCT DMGD	18757	LA-0018-21	05/21	
2670	Santa Catalina Island West End Light	LT EXT	18757	LA-0113-19	34/19	
2810	Anaheim Bay Channel Buoy 7	OFF STA	18749	LA-0062-22	30/22	
3012	Long Beach Light	LT EXT	18751	LA-0148-20	49/20	
3117	Los Angeles Main Channel Lighted Buoy 11	REDUCED INT	18751	LA-0105-21	28/21	
3132	Terminal Island Channel Lighted Buoy 1	STRUCT DMGD	18751	LA-0027-22	16/22	
3330	Redondo Beach West Jetty Light 3	STRUCT DEST	18744	LA-0021-23	09/23	
3625	Port Hueneme Channel Lighted Buoy 6	SINKING	18725	LA-0091-22	39/22	
3750	Santa Barbara Harbor Breakwater Light	SS INOP	18725	LA-0029-23	14/23	
3770	Santa Barbara Harbor Lighted Buoy 5	LT EXT	18725	LA-0030-23	14/23	
3845	Morro Bay Channel Lighted Buoy 2	OFF STA	18703	LA-0013-23	04/23	
3877	Morro Bay Rough Bar Warning Light	LT EXT	18703	LA-0027-23	12/23	
3970	Monterey Harbor Light 6	SS INOP	18685	SF-0064-20	27/20	
4000	Moss Landing Harbor Entrance Range Front Light	LT EXT	18685	SF-0055-23	10/23	
4245	Mile Rocks Light	LT EXT	18649	SF-0099-22	44/22	
<b>4606</b>	<b>Oakland Harbor Bar Channel Lighted Buoy 2</b>	<b>SINKING</b>	<b>18650</b>	<b>SF-0071-23</b>	<b>15/23</b>	
4610	Oakland Outer Harbor Range B Front Light	DAYMK MISSING	18650	SF-0070-23	14/23	
4617	Oakland Outer Harbor Centerline Range Front Light	DAYMK MISSING	18650	SF--0069-23	14/23	
4625	Oakland Outer Harbor Range A Rear Light	LT EXT	18650	SF-0092-22	42/22	
4655	Oakland Outer Harbor Light 13	MISSING/TRLB	18650	SF-0067-23	14/23	
4680	Oakland Inner Harbor Light 10	MISSING/TRLB	18650	SF-0052-21	02/22	
4684	Oakland Inner Harbor Turn Basin Light B	STRUCT DMGD/TRLB	18650	SF-0097-21	29/21	
4740	San Leandro Bay Airport Channel Daybeacon 6	STRUCT DEST/TRUB	18650	SF-0033-22	15/22	
4830	San Leandro Marina Channel Light 1	LT EXT/SS INOP		SF-0012-23	02/23	
5430	Berkeley Marina Channel Light 2	LT EXT	18650	SF-0086-22	40/22	
5485	San Francisco Bay North Channel Lighted Buoy 8	OFF STA	18653	SF-0016-23	03/23	

5495	San Francisco Bay North Preferred Channel Lighted Buoy B	OFF STA	18653	SF-0033-23	05/23
5640	Southampton Shoal Channel Lighted Buoy 1	LT EXT	18653	SF-0014-23	02/23
5657	Southampton Shoal Channel Lighted Buoy 5	REDUCED INT	18649	SF-0038-23	06/23
5690	Richmond Harbor Channel Lighted Buoy 5	LT EXT	18650	SF-0062-23	12/23
5725	Richmond Harbor Channel Light 9	MISSING/TRLB	18649	SF-0098-22	43/22
5820	San Francisco Bay North Channel Lighted Bell Buoy 18	LT EXT	18649	SF-0101-22	44/22
5890	San Pablo Bay Preferred Channel Lighted Buoy E	OFF STA	18654	SF-0031-23	05/23
6095	Mare Island Strait Light 2	STRUCT DMGD/TRLB	18655	SF-0152-20	49/20
<b>6100</b>	<b>Mare Island Strait Light 3</b>	<b>REDUCED INT</b>	<b>18655</b>	<b>SF-0072-23</b>	<b>15/23</b>
6240	Carquinez Strait Light 23	LT EXT	18656	SF-0008-23	02/23
6310	Suisun Bay Channel Buoy 3	OFF STA	18656	SF-0116-21	36/21
6433	Point Edith Crossing Range Front Light	STRUCT DEST/TRLB	18658	SF-0067-22	32/22
6505	Suisun Bay Channel Lighted Buoy 17	OFF STA	18658	SF-0128-21	02/22
6510	Suisun Bay Channel Lighted Buoy 19	LT EXT	18658	SF-0005-23	02/23
6685	San Joaquin River Light 8	STRUCT DMGD/TRLB	18656	SF-0109-21	02/22
6780	San Joaquin River Light 29	LT EXT	18661	SF-0073-23	14/23
6855	San Joaquin River Light 46	STRUCT DEST/TRLB	18661	SF-0057-22	28/22
7210	Sacramento River Deep Water Ship Channel Light 10	MISSING/TRLB	18656	SF-0101-21	32/21
7235	Sacramento River Deep Water Ship Channel Light 15	MISSING/TRLB	18661	SF-0100-20	35/20
7240	Sacramento River Deep Water Ship Channel Light 16	STRUCT DEST/TRLB	18661	SF-0127-18	34/18
7260	Sacramento River Deep Water Ship Channel Light 20	MISSING/TRLB	18661	SF-0108-21	05/23
7810	Bodega Harbor Channel Light 6	STRUCT DMGD/TRLB		SF-0028-21	08/23
7815	Bodega Harbor Channel Daybeacon 7	STRUCT DEST/TRLB		SF-0046-23	08/23
8085	Noyo River Entrance Lighted Bell Buoy 2	OFF STA	18620	HB-0005-23	05/23
8360	Crescent City Harbor Lighted Whistle Buoy 2	LT EXT	18603	HB-0013-22	51/22
8475	Emerald Bay Entrance Buoy 4	OFF STA		SF-0037-23	06/23
8485	Lake Tahoe Lighted Danger Buoy Q	OFF STA		SF-0102-22	44/22

#### DISCREPANCIES (FEDERAL AIDS) CORRECTED

LLNR	Aid Name	Status	Chart No.	BNM Ref.	LNM St	LNM End
4615	Oakland Outer Harbor Range B Rear Light	WATCHING PROPERLY	18650	SF-0068-23	14/23	15/23

#### DISCREPANCIES (PRIVATE AIDS)

LLNR	Aid Name	Status	Chart No.	BNM Ref.	LNM St	LNM End
20	Ocean Beach Pier Fog Sound Signal	SS INOP	18765	SD-0002-19	05/19	
158	Scripps Waverider Lighted Research Buoy 092	OFF STA	18746		45/18	
505	Scripps Waverider Lighted Research Buoy 168	LT EXT	18620	HB-0003-22	14/22	
1665	Americas Cup Harbor Daybeacon 2	STRUCT DEST/TRUB	18773	SD-0001-22	02/22	
2056	Sweetwater Channel Light 6	STRUCT DEST	18773	SD-0087-22	47/22	
2070	Coronado Cays Channel Daybeacon 3	STRUCT DEST	18773	SD-0098-17	36/17	
2090	Coronado Cays Channel Light 7	STRUCT DEST/TRUB	18773	SD-0046-22	31/22	
2159.1	Chula Vista Channel Shoal Light B	STRUCT DEST	18773	SD-0021-23	14/23	
2288	Scripps Waverider Lighted Research Buoy 220	OFF STA	18765	SD-0041-20	30/20	

2289.1	Scripps Waverider Lighted Research Buoy 100	OFF STA	18765		22/20
2289.4	Scripps "CORDC" Lighted Research Buoy	MISSING	18765		22/20
2764.4	Catalina Sea Ranch SE Buoy	MISSING	18746	LA-0001-22	03/22
2871	Long Beach Harbor Brusco Lighted Mooring Buoy	LT EXT	18751	LA-0009-21	03/21
3339.2	REDONDO HARBOR LIGHT	LT EXT	18744	LA-0181-18	52/18
3400	El Segundo NRG Energy Buoy 6ES	SINKING	18744	LA-0153-21	39/21
3420	Hyperion Lighted Gong Buoy 10 ES	LT EXT	18744		16/20
3972.1	Monterey Harbor Junction Lighted Buoy A	Status Unreported	18685	SF-0039-23	06/23
4401	Richardson Bay Daybeacon 8	DAYMK DMGD	18653		15/20
4402	Richardson Bay Daybeacon 9	STRUCT DMGD	18649	SF-0086-18	23/18
4420	San Francisco-Oakland Bay Bridge Pier A Fog Signal	SS INOP	18650	SF-0034-23	06/23
4425	San Francisco-Oakland Bay Bridge Pier B Fog Signal	SS INOP	18650	SF-0034-23	06/23
4435	San Francisco-Oakland Bay Bridge Pier C East Side Fog Signal	SS INOP	18650	SF-0034-23	06/23
4445	San Francisco-Oakland Bay Bridge Pier D Fog Signal	SS INOP	18650	SF-0034-23	06/23
4460	San Francisco-Oakland Bay Bridge Pier E Fog Signal	SS INOP	18650	SF-0034-23	06/23
4576	South Beach Harbor North Entrance Light 2	LT EXT	18650	SF-0047-21	11/21
4577	South Beach Harbor North Entrance Light 1	LT EXT	18650	SF-0046-21	10/21
4578	South Beach Harbor South Entrance Light 1	LT EXT	18650	SF-0091-20	33/20
4826	Bay Farm Island Light 1	LT EXT	18650	SF-0014-19	05/19
4826.15	Bay Farm Island Light 3	LT EXT	18650	SF-0014-19	04/19
4826.2	Bay Farm Island Light 4	LT EXT	18650	SF-0136-21	44/21
4827.1	San Francisco Bay Anchorage 9 Lighted Mooring Buoy A	LT EXT	18650	SF-0012-20	04/20
4828.1	San Francisco Bay Anchorage 9 Lighted Mooring Buoy B	LT EXT	18650	SF-0013-20	04/20
5661	Southampton Shoal Outfall Lighted Buoy 1	LT EXT/RAC INOP	18653	SF-0026-19	07/19
5661	Southampton Shoal Outfall Lighted Buoy 1	MISSING/TRLB	18653	SF-0029-20	18/21
5661	Southampton Shoal Outfall Lighted Buoy 1	STRUCT DMGD	18653	SF-0126-22	52/22
5662	Southampton Shoal Outfall Lighted Buoy 2	LT EXT	18653	SF-0059-21	14/21
5877.2	San Rafael Rock Quarry Mooring Buoy C	MISSING	18653		36/18
6623	New York Slough Koch West Light	LT IMCH			39/18
6624	New York Slough Koch East Light	LT EXT			39/18
6645.5	Delta Diablo Outfall Lighted Buoy	LT EXT		SF-0005-22	02/22
8325	Pacific Gas and Electric Dike Light	LT EXT	18622	HB-0009-21	20/21
8591.1	Lake Tahoe NASA-JPL Lighted Research Buoy TB2	Status Unreported			37/22

**DISCREPANCIES (PRIVATE AIDS) CORRECTED**

LLNR	Aid Name	Status	Chart No.	BNM Ref.	LNM St	LNM End
------	----------	--------	-----------	----------	--------	---------

None

**PLATFORM DISCREPANCIES**

Name	Status	Position	BNM Ref.	LNM St	LNM End
------	--------	----------	----------	--------	---------

None

**PLATFORM DISCREPANCIES CORRECTED**

Name	Status	Position	BNM Ref.	LNM St	LNM End
------	--------	----------	----------	--------	---------

None

**SECTION III - TEMPORARY CHANGES and TEMPORARY CHANGES CORRECTED**

This section contains temporary changes and corrections to Aids to Navigation for this edition. When charted aids are temporarily relocated for dredging, testing, evaluation, or marking an obstruction, a temporary correction shall be listed in Section IV giving the new position.

**TEMPORARY CHANGES**

LLNR	Aid Name	Status	Chart No.	BNM Ref.	LNM St	LNM End
280	Point Sur Light	Reduced Intensity	18680	SF-0105-20	35/20	

**TEMPORARY CHANGES CORRECTED**

LLNR	Aid Name	Status	Chart No.	BNM Ref.	LNM St	LNM End
------	----------	--------	-----------	----------	--------	---------

None

**PLATFORM TEMPORARY CHANGES**

Name	Status	Position	BNM Ref.	LNM St	LNM End
------	--------	----------	----------	--------	---------

None

**PLATFORM TEMPORARY CHANGES CORRECTED**

Name	Status	Position	BNM Ref.	LNM St	LNM End
------	--------	----------	----------	--------	---------

None

**SECTION IV - CHART CORRECTIONS**

This section contains corrections to federally and privately maintained Aids to Navigation, as well as NOS corrections.

This section contains corrective actions affecting chart(s). Corrections appear numerically by chart number, and pertain to that chart only. It is up to the mariner to decide which chart(s) are to be corrected. The following example explains individual elements of a typical chart correction.

Chart Number	Chart Edition	Edition Date	Last Local Notice to Mariners	Horizontal Datum Reference	Source of Correction	Current Local Notice to Mariners
12327	91st Ed.	19-APR-97	Last LNM: 26/97	NAD 83		27/97
Chart Title: NY-NJ-NEW YORK HARBOR - RARITAN RIVER						
Main Panel 2245 NEW YORK HARBOR						
(Temp) ADD	NATIONAL DOCK CHANNEL BUOY 3				CGD01 at 40-41-09.001N	074-02-48.001W
Corrective Action	Green can	Object of Corrective Action			Position	

(Temp) indicates that the chart correction action is temporary in nature. Courses and bearings are given in degrees clockwise from 000 true. Bearings of light sectors are toward the light from seaward. The nominal range of lights is expressed in nautical miles (NM) unless otherwise noted.

<b>50</b>	<b>9th Ed.</b>	<b>01-DEC-15</b>	<b>Last LNM: 34/22</b>	<b>NAD 83</b>		<b>15/23</b>
<i>Chart Title: North Pacific Ocean (eastern part) Bering Sea Continuation</i>						
<b>Main Panel 2400 NORTH PACIFIC OCEAN EASTERN PART. Page/Side: A</b>						
DELETE	NDBC 46114 STATION 185				CGD11 36-41-11.400N	122-19-55.200W
<b>501</b>	<b>13th Ed.</b>	<b>01-JUN-09</b>	<b>Last LNM: 31/22</b>	<b>NAD 83</b>		<b>15/23</b>
<i>Chart Title: North Pacific Ocean West Coast Of North America Mexican Border To Dixon Entrance</i>						
<b>Main Panel 1650 MEXICAN BORDER TO DIXON ENTRANCE. Page/Side: N/A</b>						
DELETE	NDBC 46114 STATION 185				CGD11 36-41-11.400N	122-19-55.200W
<b>530</b>	<b>35th Ed.</b>	<b>01-DEC-15</b>	<b>Last LNM: 34/22</b>	<b>NAD 83</b>		<b>15/23</b>
<i>Chart Title: North America West Coast San Diego to Aleutian Islands and Hawai'ian Islands</i>						

DELETE	NDBC 46114 STATION 185	CGD11 36-41-11.400N	122-19-55.200W
--------	------------------------	------------------------	----------------

<b>18010</b>	<b>22nd Ed.</b>	<b>01-SEP-12</b>	<b>Last LNM: 29/20</b>	<b>NAD 83</b>	<b>15/23</b>
--------------	-----------------	------------------	------------------------	---------------	--------------

ChartTitle: Monterey Bay to Coos Bay

Main Panel 1653 MONTEREY BAY TO COOS BAY. Page/Side: N/A

DELETE	NDBC 46114 STATION 185	CGD11 36-41-11.400N	122-19-55.200W
--------	------------------------	------------------------	----------------

<b>18020</b>	<b>39th Ed.</b>	<b>01-JAN-12</b>	<b>Last LNM: 10/21</b>	<b>NAD 83</b>	<b>15/23</b>
--------------	-----------------	------------------	------------------------	---------------	--------------

ChartTitle: San Diego to Cape Mendocino

Main Panel 1654 SAN DIEGO TO CAPE MENDOCINO. Page/Side: N/A

DELETE	NDBC 46114 STATION 185	CGD11 36-41-11.400N	122-19-55.200W
--------	------------------------	------------------------	----------------

<b>18022</b>	<b>36th Ed.</b>	<b>01-JUN-11</b>	<b>Last LNM: 10/21</b>	<b>NAD 83</b>	<b>15/23</b>
--------------	-----------------	------------------	------------------------	---------------	--------------

ChartTitle: San Diego to San Francisco Bay

Main Panel 1655 SAN DIEGO TO SAN FRANCISCO BAY. Page/Side: N/A

DELETE	NDBC 46114 STATION 185	CGD11 36-41-11.400N	122-19-55.200W
--------	------------------------	------------------------	----------------

<b>18622</b>	<b>56th Ed.</b>	<b>01-APR-16</b>	<b>Last LNM: 05/21</b>	<b>NAD 83</b>	<b>15/23</b>
--------------	-----------------	------------------	------------------------	---------------	--------------

ChartTitle: Humboldt Bay

Main Panel 1809 HUMBOLDT BAY. Page/Side: A

LAST EDITION	No new editions of chart 18622 will be published. It will be canceled on 30-Aug-23. Comparable or larger scale Electronic Navigational Chart (ENC) coverage is available. See "Cancellation of NOAA Paper and Raster Nautical Charts" in Section I of this LNM for details. A list of all canceled NOAA charts is at <a href="https://www.charts.noaa.gov/MCD/Dole.shtml">https://www.charts.noaa.gov/MCD/Dole.shtml</a> .	NOS --	--
--------------	--	-----------	----

<b>18680</b>	<b>32nd Ed.</b>	<b>01-MAY-13</b>	<b>Last LNM: 33/16</b>	<b>NAD 83</b>	<b>15/23</b>
--------------	-----------------	------------------	------------------------	---------------	--------------

ChartTitle: Point Sur to San Francisco

Main Panel 1866 POINT SUR TO SAN FRANCISCO. Page/Side: N/A

DELETE	NDBC 46114 STATION 185	CGD11 36-41-11.400N	122-19-55.200W
--------	------------------------	------------------------	----------------

<b>18751</b>	<b>48th Ed.</b>	<b>01-JUL-16</b>	<b>Last LNM: 21/09</b>	<b>NAD 83</b>	<b>15/23</b>
--------------	-----------------	------------------	------------------------	---------------	--------------

ChartTitle: Los Angeles and Long Beach Harbors

Main Panel 1904 LOS ANGELES AND LONG BEACH HARBORS. Page/Side: A

LAST EDITION	No new editions of chart 18751 will be published. It will be canceled on 30-Aug-23. Comparable or larger scale Electronic Navigational Chart (ENC) coverage is available. See "Cancellation of NOAA Paper and Raster Nautical Charts" in Section I of this LNM for details. A list of all canceled NOAA charts is at <a href="https://www.charts.noaa.gov/MCD/Dole.shtml">https://www.charts.noaa.gov/MCD/Dole.shtml</a> .	NOS --	--
--------------	--	-----------	----

---

## SECTION V - ADVANCE NOTICES

This section contains advance notice of approved projects, changes to aids to navigation, or upcoming temporary changes such as dredging, etc. Mariners are advised to use caution while transiting these areas.

### SUMMARY OF ADVANCED APPROVED PROJECTS

<u>Approved Project(s)</u>	<u>Project Date</u>	<u>Ref. LNM</u>
None		

#### Advance Notice(s)

##### NORTHERN CALIFORNIA-SAN FRANCISCO-SAN BRUNO SHOAL CHANNEL LT 1

The U.S. Coast Guard is planning to install a Mariner Radio Activated Sound Signal (MRASS) device on San Bruno Shoal Channel Light 1 (LLNR 4945). This device will allow the mariner to activate the installed sound signal by keying on a VHF-FM radio microphone six times at the designated frequency for the AtoN (83A). Please direct questions, comments, or concerns no later than 23 May, 2023 to LT Miranda Brumbaugh at 510-437-2984 or [Miranda.E.Brumbaugh@uscg.mil](mailto:Miranda.E.Brumbaugh@uscg.mil).

Chart 18654

LNM: 08/23

---

---

## SECTION VI - PROPOSED CHANGES

Periodically, the Coast Guard evaluates its system of aids to navigation to determine whether the conditions for which the aids to navigation were established have changed. When changes occur, the feasibility of improving, relocating, replacing, or discontinuing aids are considered. This section contains notice(s) of non-approved, proposed projects open for comment. SPECIAL NOTE: Mariners are requested to respond in writing to the District office unless otherwise noted (see banner page for address).

---

### PROPOSED WATERWAY PROJECTS OPEN FOR PUBLIC COMMENT

#### Proposed Project(s)

None

#### Closing

#### Docket No.

#### Ref. LNM

#### Proposed Change Notice(s)

##### **CALIFORNIA-SAN FRANCISCO TO SAN DIEGO-REMOVAL OF RACONS ON AIDS TO NAVIGATION**

The U.S. Coast Guard will be removing the RACONS from aids to navigation located along the California Coast due to the consistent failure of the signals and that they are no longer considered necessary for safe navigation of the waterways. While there is no specific timeline for the removal of this equipment, it will be coordinated with servicing and discrepancy responses. The removal of the RACONS will be announced by Broadcast Notice to Mariners and published in the Local Notice to Mariners as Chart and Light List corrections. These aids to navigation are:

San Francisco Approach Lighted Whistle Buoy SF (LLNR 360): 37-44-59.761N 122-41-33.995W  
Harding Rock Lighted Buoy HR (LLNR 4330): 37-50-17.661N 122-26-45.579W  
Los Angeles Approach Channel Lighted Whistle Buoy 3 (LLNR 3107): 33-41-16.012N 118-14-24.050W  
Long Beach Channel Approach Lighted Whistle Buoy LB (LLNR 3010): 33-41-24.013N 118-11-01.050W  
San Diego Bay Approach Lighted Whistle Buoy SD (LLNR 10): 32-37-20.204N 117-14-45.177W

Mariners are requested to respond in writing to the Coast Guard District office with any comments on this change at D11-SMB-D11-LNM@uscg.mil. Any discrepancy for these or other Aids to Navigation should continue to be reported to the closest US Coast Guard Sector.

Charts: 18007 18010 18022 18640 18649 18650 18680 18746 18749 18765 18772 LNM: 05/23

##### **SOUTHERN CALIFORNIA-ANACAPA ISLAND-ANACAPA ISLAND LIGHT SOUND SIGNAL**

The U.S. Coast Guard is proposing to permanently discontinue the sound signal on Anacapa Island Light (LLNR 185). The current aid is in the approximate position: 34-00-57N 119-21-34W. Direct any questions, comments or feedback no later than 14 June, 2023 to LT Miranda Brumbaugh at 510-437-2984 or Miranda.E.Brumbaugh@uscg.mil.

Charts: 18022 18720 18729 18740 LNM: 10/23

---

---

## SECTION VII - GENERAL

This section contains information of general concern to the Mariners. Mariners are advised to use caution while transiting these areas.

---

##### **ARIZONA/CALIFORNIA-COLORADO RIVER-BRIDGE**

INTERSTATE 8 BRIDGE (YUMA, AZ)-Repair work on the bridge will be conducted Monday through Friday, 6 a.m. to 3 p.m., 27 February, 2023 until 01 September, 2023. A 60 ft X 40 ft temporary trestle will be installed on the south bank of the river, beneath the bridge deck, extending 60 feet into the river. The channel ward ends of the trestle will be lighted at night with steady burning red lights (See I-8\_Trestle\_Lighting.pdf at the end of this notice.) For bridge condition updates, mariners can contact Caltrans at 858-688-1511 or 858-289-1269. Mariners are requested to transit the area with caution. For further information contact the Coast Guard Bridge Office at 510-437-3515.

LNM: 07/23

##### **ARIZONA/NEVADA-COLORADO RIVER-BRIDGE**

NEW LAUGHLIN-BULLHEAD CITY BRIDGE-In-water work continues on the construction of the new bridge in position 35-03-17N 114-36-45W. Work is being conducted Monday through Friday, 0630 to 1430, until 03 October, 2023. The access pads on the Arizona and Nevada side have been reduced exposing piers of the new bridge. The upriver and downriver ends of the piers, as well as the channel ward side of middle pier, are lit at night with steady burning red lights. The upriver and downriver in-ward tip of the Nevada side access pad and the downriver inward tip of the Arizona side access pad will be lit at night with steady burning red lights, visible at 2,000 yards by approaching vessels. A fourth red light will be installed on the northeast side of the river to mark the area to keep vessels out (see RockAccessPad\_Lighting02.pdf at the end of this notice). Approximately 117 feet of horizontal clearance is provided in the center of the river during construction. Precast girders will be installed 08 May, 2023 through 19 May, 2023, with ten girders being hoisted over the river for two hours at a time and two girders will be set per day. For on-site conditions during girder installation mariners should contact 480-254-8475 or 702-817-7088. For on-site conditions contact 702-455-6030 or 702-817-7088, or 702-286-0137. For further information contact the Coast Guard Bridge Office at 510- 437-3515.

LNM: 15/23

##### **LOWER COLORADO RIVER-LAKE HAVASU, AZ-MARINE EVENT**

Arizona Adaptive Water Sports will be sponsoring an adaptive water sports event in the vicinity of Crazy Horse Campground on 5 May, 2023 and 6 May, 2023 from 9:00am to 4:00pm each day. The event will involve approximately seven vessels of various types providing adaptive waterskiing, tubing and kayaking to disabled athletes. Mariners are requested to minimize wake as practicable and exercise caution when transiting near the event area. For more details or comments contact Jo Crawford at 602-228-3660.

LNM: 15/23

##### **LOWER COLORADO RIVER-LAKE HAVASU-MARINE EVENT**

The National Water Ski Racing Association (NWSRA) will be sponsoring the NWSRA Springs Classic from 15 April, 2023 until 16 April, 2023 from 8:00am to 5:00pm each day. The event will involve approximately 25 vessels pulling water-skiers on a closed course in the vicinity of the Havasu Springs Resort. Mariners are requested to transit the area with caution. For more details or comments, contact Brian Vesely at 982-208-2263.



## LOWER COLORADO RIVER-LAKE HAVASU-MARINE EVENT

LNM: 13/23

## LOWER COLORADO RIVER-LAKE HAVASU-MARINE EVENT

The Freestyle Personal Watercraft Association (FPWCA) will be sponsoring the Spring Round – U.S. Freestyle Championship event on 13 May, 2023 from 7:00am to 7:00pm. The event will involve a freestyle PWC competition on a closed course in the Bridgewater Channel, south of London Bridge. Mariners are requested to transit the area with caution near the event area. For more details or comments contact Vaclav Zacek at 928-412-2976.

LNM: 15/23

## LOWER COLORADO RIVER-LAKE HAVASU-MARINE EVENT

The National Water Ski Racing Association (NWSRA) will be sponsoring the NWSRA Summer Showdown on 5 May, 2023 and 6 May, 2023 from 7:00am to 5:00pm each day. The event will involve approximately 25 vessels pulling water-skiers on a 5-mile course in the vicinity of the Havasu Springs Resort. Mariners are requested to transit the area with caution. For more details or comments contact Brian Vesely at 982-208-2263.

LNM: 15/23

## LOWER COLORADO RIVER-LAUGHLIN-MARINE EVENT

The Avi Resort & Casino will be hosting the Fireworks Over the Colorado River fireworks event on 28 May, 3 July, and 3 September, 2023 from 7:00pm to 9:00pm each day in Laughlin, NV. Waterway closures will be in effect from Veterans Bridge to the north end of Avi Resorts Lagoon during the event. For more details comments contact David Smith at 702-420-3928.

LNM: 15/23

## LOWER COLORADO RIVER-PARKER-MARINE EVENT

RPM Racing Enterprises will be sponsoring the Blue Water Resort & Casino Rounds 3 & 4 Best of the West Series from 14 April, 2023 until 16 April, 2023 from 6:00am until 6:00pm each day. The event will involve approximately 18-20 classes of personal watercraft racing on a course in the vicinity of Blue Water Beach. Mariners are requested to transit the area with caution. For more details or comments, contact Ross Wallach at 310-318-4012.

LNM: 13/23

## NORTHERN CALIFORNIA-ALAMEDA TO PIONEER SEAMOUNT AREA-SEA TRIALS

SAILDRONE, INC. is conducting offshore oceanographic research survey testing and will operate up to five Unmanned Surface Vehicles called SAILDRONE Explorers and SAILDRONE Voyagers until 30 April 2023, in the Pioneer Seamount area. The operations will be conducted within the following coordinates:

Survey Site 1: 37-22.00N 123-19.80W

37-22.00N 123-08.40W

37-15.00N 123-08.40W

37-15.00N 123-19.80W

Survey Site 2: 37-31.00N 122-57.00W

37-28.00N 123-04.00W

37-26.00N 122-53.00W

37-23.00N 123-00.00W

The Saildrone Explorer is 23 feet long, 16 feet tall, painted orange with a white all-around light on top and marked SAILDRONE. The Saildrone Voyager is 33 feet long, 21 feet tall and painted orange or gray and marked SAILDRONE. Saildrones will broadcast AIS and travel at a speed up to 5 knots. Mariners are requested to transit the area with caution and maintain a 500 meters separation from the Saildrone. For more details or comments contact Saildrone mission control at missioncontrol@saildrone.com or 510-722-6070.

Charts: 18640 18680

LNM: 10/23

## NORTHERN CALIFORNIA-ALBION RIVER-BRIDGE

ALBION RIVER (HIGHWAY 1) BRIDGE-AVAILABILITY OF PRELIMINARY PUBLIC NOTICE - The United States Coast Guard is soliciting public comments on a proposal by the California Department of Transportation (Caltrans) to replace the existing Albion River (Highway 1) Bridge. The General Bridge Act of 1946 requires approval of the location and plans for bridges over navigable waters of the United States, prior to commencing construction. A Coast Guard Bridge Permit application has not yet been submitted but would be required for this project.

WATERWAY AND LOCATION: Albion River, mile 0.25, at Albion, Mendocino County, California. 39.225972, -123.769290

Preliminary Public Notice (11-160), dated April 4, 2023, contains a description of the proposed bridge replacement project including maps and bridge drawings detailing the most restrictive navigational clearances for all proposed alternatives. A preferred alternative has not been selected at this time. Interested parties may access Active Public Notices for Bridge Projects for the Eleventh Coast Guard District at the following website: <https://go.usa.gov/xJ8yw>. The public notice may also be obtained by calling the Eleventh Coast Guard District Bridge Office at (510) 437-3515; by writing to Commander (dpw), Eleventh Coast Guard District, Coast Guard Island, Bldg 50-2, Alameda, CA 94501-5100; by email request at D11-SG-M-dpw-Bridges@uscg.mil or by facsimile request at (510) 437-5836.

Mariners are requested to comment on the proposed bridge project. Interested parties are requested to express their views in writing. Comments will be received for the record at the address given in Preliminary Public Notice (11-160) through May 4, 2023.

Chart 18620

LNM: 14/23

## NORTHERN CALIFORNIA-ALCATRAZ ISLAND-MARINE CONSTRUCTION

Manson Construction Co. will be conducting marine construction to the wharf at Alcatraz Island at 37-49-36N 122-25-15W. Construction will begin on 23 January, 2023 and be completed on 04 October, 2025. During construction DB HAGAR will be utilizing divers during low tide. Tug WESTAR will be assisting DB HAGAR and monitoring VHF-FM Chan. 13 and 16. Mariners are requested to transit the area with caution. For more details or comments contact Matt Lehmann at 510-529-1583.

Chart 18653

LNM: 50/22

## NORTHERN CALIFORNIA-AMPORTS BENICIA PIER-DREDGE OPERATIONS

**NORTHERN CALIFORNIA-AMPORTS BENICIA PIER-DREDGE OPERATIONS**

The Dutra Group will be conducting dredging operations at the Amports Benicia Pier at 38-02-30N 122-08-01W from 30 March, 2023 until 31 April, 2023. DB 24, tow tug HEIDI L BRUSCO, and BECKY T along with five split scows will conduct operations 24 hours, 7 days a week. All vessels will be monitoring VHF-FM Chan. 13, 14, and 80. All dredged material will be disposed of at Montezuma Wetland. Mariners are requested to transit the area with caution. For more details or comments contact Dennis Salyers at 415-497-5289.

Chart 18656

LNM: 13/23

**NORTHERN CALIFORNIA-CARQUINEZ STRAIT-BRIDGE**

UPSTREAM & DOWNSTREAM I-80 HIGHWAY BRIDGES-Caltrans will be conducting dive operations at the piers and towers of the upstream and downstream bridges, Monday through Friday, from 7 am to 4:30 pm, 03-07 April, 2023 and 10-14 April, 2023. The dive vessel is a 33' aluminum landing craft or 20' work boat with heavy equipment on the deck. Diver's umbilical hose may be floating at or near the surface, adjacent to the vessel. All approaching vessels should contact the vessel, "OFFICIAL BUSINESS" or "SCOW", on VHF-FM CH 16 or by cell 916-798-7148, approximately 30 minutes before transiting the bridge dive site. Extreme caution should be use when passing though the bridges. For further information, mariners can contact the Coast Guard Bridge Office at 510-437-3516.

Chart 18656

LNM: 10/23

**NORTHERN CALIFORNIA-CHINA BASIN-BRIDGE**

THIRD STREET BRIDGE-The bascule span of the bridge is secured in the closed-to-navigation position due to damage caused by a break-away barge. Estimated time of repair is unknown. For further information contact the Coast Guard Bridge Office at 510-437-3516.

Chart 18650

LNM: 13/23

**NORTHERN CALIFORNIA-DELTA & RIVERS-AMERICAN RIVER-BRIDGE**

CAPITAL CITY HWY (Route 51) BRIDGE-Caltrans is conducting rehabilitation of the bridge until 27 June, 2025. Work will be conducted during daylight hours, 7am to 5:30pm, Monday through Friday, and will include the use of barges, work boats, tugboats, turbidity curtains, and access piers. (See AmRiv\_SiltCurtain\_BargeLocation.pdf in the enclosure section.). During the workday, barges can be moved for the safety of navigation with one hour notice to the contractor via VHF-FM CH 16 or by cell at 916-532-8208. Mariners should contact the contractor before transiting the bridge to determine location of turbidity curtains. Barges will be unmanned and moored at their work locations overnight. Each corner of each barge will be lighted at night with steady burning red lights. At least 25 feet of horizontal clearance for navigation will be available at all times. Mariners are requested to transit the area with caution. For further information, contact the Coast Guard Bridge Office at 510-437-3461.

Chart 18662

LNM: 23/22

**NORTHERN CALIFORNIA-DELTA & RIVERS-GEORGIANA SLOUGH-BRIDGE**

TYLER ISLAND RD BRIDGE-The upstream northeast red pier light is extinguished. For further information contact the Coast Guard Bridge -Office at 510-437-3514.

Chart 18661

LNM: 11/23

**NORTHERN CALIFORNIA-DELTA & RIVERS-MOKELUMNE RIVER-BRIDGE**

MILLERS FERRY BRIDGE- The northern most red dolphin light is extinguished. Estimated time of repair unknown. For further information contact the Coast Guard Bridge Office at 510-437-3514.

Chart 18661

LNM: 13/23

**NORTHERN CALIFORNIA-DELTA & RIVERS-MOKELUMNE RIVER-BRIDGE**

MOKELUMNE RIVER BRIDGE (HWY 12)-Rehabilitation of the bridge continues, Monday through Friday, 7 am to 5 pm, 15 December, 2022 until 26 May, 2023. Floating equipment utilized during the entire project will include a 40' x 80' spudded crane barge, a 28' x 40' supply barge, a 20' push boat, and a 16' skiff boat. The barges will be anchored in either navigational channel next to the bridge during the work day and will be left on-scene unmanned overnight. Each corner of each barge will be lighted at night. (See MokeRiverBridge\_RehabBargeLights.pdf for typical location and lighting diagram.) Lighted buoys will be deployed to direct mariners to the side of the bridge were no work is being conducted. For navigational safety and to request an opening of the swing span during the project, the bridge will open on signal and the barges moved Monday through Friday 7 am to 5 pm, if at least 4-hours notice is given to the bridge owner and at all other times the bridge will open on signal and the barges moved if at least 10-hours notice is given to the bridge owner. For on-scene conditions, mariners can contact the contractor at 510-774-1204 or 925-658-2672. For further information, contact the Coast Guard Bridge Office at 510-437-3461.

Chart 18661

LNM: 51/22

**NORTHERN CALIFORNIA-DELTA & RIVERS-NAPA RIVER-BRIDGE**

HIGHWAY 37 BRIDGE-The northwest fender in the main navigation span of the bridge is damaged and may not offer adequate protection for vessels passing through the bridge. For further information, contact the Coast Guard Bridge Office at 510-437-3516.

Chart 18654

LNM: 09/23

**NORTHERN CALIFORNIA-DELTA & RIVERS-OLD RIVER-BRIDGE**

CA ROUTE 4 BRIDGE- Critical bridge rehabilitation is taking place 7am to 3:30pm Monday through Friday. Due to unforeseen circumstances, the drawspan will be secured in the closed-to-navigation position until 30 Nov, 2023. The swing span WILL NOT open for the passage of vessels. A 40'x80' work barge will be employed and tied to one of the bridge piers during this time. Mariners can transit through the construction site at the western most span, between the west bank and Pier 2, or other spans not being occupied by the work barge. For navigational safety, during normal work hours the barge can be moved with 4 hours advance notice by contacting the contractor. At other times, the barge can be moved with 24hrs advance notice. Each corner of the moored barge will be lighted at night with steady burning red lights (See OldRiver\_Barge\_Lighting\_Plan.pdf in the enclosure section). In the closed position, the bridge provides 12' vertical clearance above mean high water. Vessels able to transit the bridge while closed can continue to do so at any time. For conditions at the work site, mariners can contact the contractor at 209-513-7309 or 415-375-5549; or Caltrans at 209-470-8835 or 209-465-0935. For further information, contact the Coast Guard Bridge Office at 510-437-3461.

Chart 18661

LNM: 13/23

**NORTHERN CALIFORNIA-DELTA & RIVERS-SACRAMENTO RIVER-BRIDGE**

REPLACEMENT BUTTE CITY BRIDGE- Replacement bridge construction continues Monday through Friday during daylight hours until 01 Sep, 2023.

**NORTHERN CALIFORNIA-DELTA & RIVERS-SACRAMENTO RIVER-BRIDGE**

Installation of a temporary trestle has begun. Once trestle is in place, falsework will be installed. A temporary navigation span during construction will be just west of the existing bridge's pivot pier, 435 feet west of new bridge abutment, and is lighting at night with a green center channel light on the upriver and downriver portion of the trestle. Red lights will mark low steel of the remaining spans of the trestle. A buoy line will be installed, pending Coast Guard approval, to guide vessels through the bridge construction area (see ButteConstructionLighting-BuoyLine.pdf enclosure at the end of this notice). The temporary navigation span will provide at least 32 feet of horizontal clearance and 14 feet of vertical clearance from ordinary high water to low steel of the temporary trestle. For on-scene conditions contact Golden State Bridge, Inc, at 415-720-6577 or 925-260-0403 or Caltrans at 530-941-8272 or 530-682-3931. For further information contact the Coast Guard Bridge Office at 510-437-3461.

LNM: 42/22

**NORTHERN CALIFORNIA-DELTA & RIVERS-SACRAMENTO RIVER-BRIDGE**

RIO VISTA BRIDGE-Caltrans continues major rehabilitation work on the bridge. Therefore, from 6 a.m. on 06 March 23 until 6 p.m. on 25 August 23, the lift span of the bridge will open on signal if at least a 4-hour notification is given to the drawtender. For further information contact the Coast Guard Bridge Office at 510-437-3516.

Chart 18661

LNM: 09/23

**NORTHERN CALIFORNIA-DELTA & RIVERS-SACRAMENTO RIVER-BRIDGE**

TOWER DRAWBRIDGE- The drawspan will be secured in the closed-to-navigation position for a community event from 8:30am to 12pm on 07 May, 2023. The bridge provides 30' vertical clearance above mean high water when closed. Vessels that can transit the bridge in the closed position may continue to do so at any time. For more details or comments, contact the Coast Guard Bridge Office at 510-437-3461.

Chart 18662

LNM: 11/23

**NORTHERN CALIFORNIA-DELTA & RIVERS-SACRAMENTO RIVER-BRIDGE**

RIO VISTA BRIDGE-The upriver and downriver green center channel lights on the lift span are not operational. The center span channel lights show red in all positions, even when the span is in the fully open-to-navigation position. The bridgetender will be able to inform any vessel requesting an opening when the lift span is fully open. Estimated time of repair is unknown. For further information contact the Coast Guard Bridge Office at 510-437-3516.

Chart 18661

LNM: 49/22

**NORTHERN CALIFORNIA-DELTA & RIVERS-SAN JOAQUIN RIVER-BRIDGE**

CROWS LANDING ROAD BRIDGE-Replacement of the bridge is ongoing. Work is being conducted Monday through Friday 0600 to 1600 until 01 Aug, 2023. A temporary bridge, with a removable span, will be installed to facilitate construction. With the span removed, the temporary bridge will provide, at a minimum, 15 feet of horizontal clearance. The span will be removed after normal working hours. Temporary falsework will be installed to facilitate construction. The temporary falsework's navigation span will provide 16 feet of vertical clearance at Ordinary High Water when the temporary bridge's removable span is removed. Upriver and downriver red channel margin lights and green center channel lights will mark the temporary navigation span at night. To view the temporary navigation span and lighting, see the TemporaryBridge\_FalseworkLighting.pdf enclosure at the end of this notice. Mariners are requested to use extreme caution when transiting the work site. For conditions at the project site mariners can contact the contractor at 916-869-8210 or 559-593-5182. For further information contact the Coast Guard Bridge Office at 510-437-3461.

LNM: 36/22

**NORTHERN CALIFORNIA-DELTA & RIVERS-SAN JOAQUIN RIVER-BRIDGE**

PORT OF STOCKTON RAIL BRIDGE-Coast Guard Public Notice (11-157b) announces the Notice of Availability of Final Environmental Assessment (FEA) and Finding of No Significant Impact (FONSI) for the proposed Port of Stockton Rail Bridge Replacement and Rail Improvements Project at the Port of Stockton, San Joaquin County, California.

The notice is available as an enclosure at the end of this article (See CG-PN\_11-157b.pdf). To view the FEA and FONSI without having to download the enclosure you can follow <https://go.usa.gov/xzpQc> to the Coast Guard Office of Bridge Programs Projects page.

For further information contact the Coast Guard Bridge Office at 510-437-3516.

Chart 18661

LNM: 15/23

**NORTHERN CALIFORNIA-HUMBOLDT BAY-SEASONAL AID DISCONTINUANCE**

Humboldt Bay Lighted Bell Buoy 2 (LLNR 8135) has been temporarily discontinued for the 2022-2023 winter season until May 2023. The buoy is scheduled for re-establishment and will be back on-station May 2023. A Synthetic AIS for the aid position is active and will be available year-round for this aid position. For more details or comments contact LCDR Paul Garcia at 510-437-2982 or Paul.A.Garcia2@uscg.mil.

Charts: 18620 18622

LNM: 40/22

**NORTHERN CALIFORNIA-MARE ISLAND DRY DOCK-VALLEJO-DREDGE OPERATIONS**

The Dutra Group will be conducting dredging operations at the Mare Island Dry Dock in Vallejo, CA at 37-48-33N 122-24-26W, 24 hours a day, 7 days a week from 3-30 April, 2023. All dredged material will be disposed of at SF-9 at 38-04-34N 121-50-30W. DB 24, 05 split hull scows, along with tender tug BECKY T or PHYLLIS T will be conducting the dredge operations. All vessels will monitor VHF-FM Chan. 13, 14, and 80. Mariners are requested to transit the area with caution. For more details or comments contact Dennis Salyers at 415-497-5289.

Chart 18655

LNM: 13/23

**NORTHERN CALIFORNIA-MOKELUMME RIVER-ANDRUS ISLAND-SUNKEN VESSEL**

The Coast Guard received a report of a sunken partially burned houseboat in the vicinity of Rancho Harbor Marina at position 38-06-30N 121-34-34W. The houseboat is approx. 30 ft long, with none of the vessel visible above the waterline. Mariners are advised to exercise due caution while transiting in the area. For more details or comments contact LT William Harris at 415-399-7443 or SFWaterways@uscg.mil.

Chart 18661

LNM: 50/22

**NORTHERN CALIFORNIA-NAPA RIVER-LIGHT OBSTRUCTION**

A large tree obstruction is stuck in the mud directly in front of Napa River Light 30 (LLNR 6207). Mariners are requested to transit the area with

**NORTHERN CALIFORNIA-NAPA RIVER-LIGHT OBSTRUCTION**

caution and consider this obstruction during inbound and outbound transits.

Chart 18654

LNM: 40/22

**NORTHERN CALIFORNIA-OAKLAND INNER HARBOR-BRIDGE**

FRUITVALE AVE RAIL BRIDGE-The lift span of the rail bridge is kept in the partially opened position providing 80 feet of vertical clearance at mean high water. Due to electrical issues, the lift span cannot be lifted to its fully open-to-navigation position of 135 feet above Mean High Water. Repairs are ongoing, estimated time of completion is unknown.

When the lift span of the railroad bridge is in the partially open position and the bascule span of the adjacent highway bridge is in the closed position, the lift span will show two red 180-degree center span lights on the upstream and downstream lower edge of the span. When the bascule span of the highway bridge is in the fully opened position, the lift span of the railroad bridge will show two 360-degree green lights, providing a range for the centerline of the channel between both highway and railroad bridges. For further information contact the Coast Guard Bridge Office at 510-437-3516.

Chart 18649

LNM: 08/23

**NORTHERN CALIFORNIA-OFFSHORE MONTEREY BAY-UNDERWATER OPERATIONS**

Reef Check Foundation have deployed underwater equipment offshore Monterey Bay, CA within the following coordinates:

36-36-17N 121-52-46W

36-36-18N 121-52-49W

36-36-15N 121-52-50W

36-36-14N 121-52-46W

All equipment will be established until 24 Mar 24. Mariners are requested to transit the area with caution and avoid anchoring within the coordinates listed above. For more details or comments contact Dan Abbot at 510-684-7835.

Chart 18685

LNM: 12/21

**NORTHERN CALIFORNIA-OFFSHORE MOSS LANDING-SCIENTIFIC OPERATIONS**

The Monterey Bay Aquarium Research Institute (MBARI) will be conducting 24hrs a day autonomous, unmanned maritime vehicle operations of two Liquid Robotics, Inc. Wavegliders ([www.liquidr.com](http://www.liquidr.com)), from 09 January, 2023 until 31 December, 2023. (MBARI) will deploy the vehicles in the vicinity of Moss Landing. Operations will be between 36-18-00N 122-58-59W and 37-12-00N 122-58-59W. Wave Glider carries no fuel, lubricants, or hydrocarbons, is wave powered, remotely attended from MBARI moving at speeds of 1kt, and designed to give way or part if encountered by a vessel. It is approximately 8ft by 2ft (surfboard size), yellow/copper in color, with a contact plaque and mast extending 3ft above the water surface supporting a flag. Mariners are requested to transit the area with caution. For more details or comments contact MBARI at 831-775-1700, [waveglider@listserv.mbari.org](mailto:waveglider@listserv.mbari.org), or Liquid Robotics 24/7 WGOE Operations at 888-574-4574, 1-408-636-4205.

Charts: 18680 18685

LNM: 02/23

**NORTHERN CALIFORNIA-OFFSHORE SAN FRANCISCO-OFFSHORE MONTEREY-OCEANOGRAPHIC OPERATIONS**

The Woods Hole Oceanographic Institution research vessel SALLY RIDE (Call Sign WSAF) will be conducting oceanographic research from 6 April, 2023 until 5 May, 2023, 24 hours a day. R/V SALLY RIDE will be conducting over-the-side and towing operations and surface drifter deployments offshore San Francisco Bay and Monterey Bay. Operations will be bounded by the following coordinates:

38-21-00N 126-15-00W

37-42-00N 124-00-00W

37-45-00N 123-21-00W

37-00-00N 122-55-00W

36-20-00N 124-22-00W

36-00-00N 124-10-00W

35-36-00N 125-30-00W

The Wave Glider autonomous surface vehicles are surfboard size, with a mast extending 1 meter above the water surface supporting a flag, radar reflector, and light. Autonomous vehicles are remotely piloted from shore, can receive/transmit AIS signals, and move at speeds less than 2 kts. They carry no fuel, lubricants, or hydrocarbons. R/V SALLY RIDE will be monitoring VHF-FM 13, 16, 21 and 82. Mariners are requested to transit the area with caution. For more details or comments contact Tom Farrar at 508-524-0501 or at [tfarrar@whoi.edu](mailto:tfarrar@whoi.edu).

Charts: 18640 18680

LNM: 15/23

**NORTHERN CALIFORNIA-OLD RIVER-HAZARD TO NAVIGATION**

The Coast Guard has received a report of downed powerlines in Old River from Mandeville Island to Webb Tract. The downed powerlines have been cut by PG&E and remain laying on the bottom of Old River. Mariners are recommended to avoid anchoring in the area and transit the area with caution. For details or comments contact Coast Guard Sector San Francisco Waterways at 510-612-9729.

Chart 18661

LNM: 01/23

**NORTHERN CALIFORNIA-PEYTONIA SLOUGH-SUISUN CITY-SUNKEN VESSEL**

The Coast Guard received a report of a sunken vessel in the vicinity of Peytonia Slough State Marine Park in the Peytonia Slough at 38-13-35N 122-02-17W. The vessel is not visible above the waterline, it is situated in the middle of the channel, and has been marked with a red buoy. Mariners are advised to exercise due caution while transiting the area. For more details or comments contact LT Miranda Brumbaugh at 510-437-2978 or [Miranda.E.Brumbaugh@uscg.mil](mailto:Miranda.E.Brumbaugh@uscg.mil).

Chart 18656

LNM: 27/22

**NORTHERN CALIFORNIA-RICHARDSON BAY-BUOY DEPLOYMENT**

University of California Davis has deployed a buoy at position 37-52-28N, 122-28-53W with characteristics of a flashing yellow light every 2.5 seconds until 01 May 2024. Mariners are requested to transit the area with caution. For more details or comments contact University of California Davis at 707-875-2009 or [vessel.ops@ucdavis.edu](mailto:vessel.ops@ucdavis.edu)

Charts: 18653 18662

LNM: 11/23

**NORTHERN CALIFORNIA-SACRAMENTO RIVER-RANDALL ISLAND-OVERTURNED VESSEL**

The Coast Guard received a report of a partially overturned pleasure craft in the vicinity of Randall Island at position 38-20-34.8N 121-33-37.2W.

**NORTHERN CALIFORNIA-SACRAMENTO RIVER-RANDALL ISLAND-OVERTURNED VESSEL**

The vessel is approx. 20ft long, with approx. 50 percent of the vessel visible above the waterline. Mariners are advised to exercise due caution while transiting in the area. For more details or comments contact LT William Harris at 415-399-7443 or SFWaterways@uscg.mil.

Chart 18662

LNM: 50/22

**NORTHERN CALIFORNIA-SACRAMENTO RIVER-REDUCED VERTICAL CLEARANCE**

Overhead power cables upstream of Sacramento River at 38-03-54N 121-47-09W have a reported reduced vertical clearance to 119.5'.

LNM: 22/16

**NORTHERN CALIFORNIA-SACRAMENTO RIVER-RIO VISTA- DIRECTIONAL DRILLING CONSTRUCTION OPERATIONS**

ARB Inc. will be conducting horizontal directional drilling operations below the Sacramento River to install a pipeline crossing near the city of Rio Vista at 38-08-53N 121-41-37W to 38-08-49N 121-40-51W. Operations will be conducted between 10 April, 2023 until 31 July, 2023 from 7:00am to 7:30pm, Monday through Saturday. Construction equipment will be staged on land above the adjacent shorelines. Mariners are requested to transit the area with caution. For more details or comments contact Kelvin Qiu at 925-404-3723.

Chart 18661

LNM: 09/23

**NORTHERN CALIFORNIA-SACRAMENTO RIVER-SAN JOAQUIN RIVER-GEOTECHNICAL DRILL TESTING**

Gregg Drilling and Testing will be conducting Overwater Geotechnical Investigations on the Sacramento River at 38-23-43N 121-30-44W, the San Joaquin River to Mokelumne River between 38-12-48N 121-29-43W and 37-54-20N 121-29-57W. R/V QUIN DELTA will be conducting the operations and monitoring VHF-FM Chan. 13, 14 and 16. Mariners are requested to transit the area with caution. For more details or comments contact Captain Tim O'Donnell at 949-254-5190 or at BEARatSEA@gmail.com.

Charts: 18010 18661 18680

LNM: 36/22

**NORTHERN CALIFORNIA-SAN DIEGO- SAILDRONE SURVEY**

SAILDRONE, INC. is conducting operations with five Uncrewed Surface Vehicles from 1 April, 2023 until 20 July, 2023. SAILDRONE Voyagers are 33 ft in length, 21 ft tall, orange or grey in color, have a tricolor light on top of the wing and are marked "SAILDRONE". These vehicles will be operating in the waters around San Diego and the Channel Islands. Mariners are requested to transit areas with caution and to remain greater than 500 meters away from the research equipment. Questions regarding saildrone operations should be directed to Saildrone Mission Control, missioncontrol@saildrone.com or 510-722-6070.

Chart 18773

LNM: 14/23

**NORTHERN CALIFORNIA-SAN FRANCISCO BAY-BRIDGE**

WESTERN SPAN SAN FRANCISCO-OAKLAND BAY BRIDGE- Caltrans' contractor, Dutra, will continue work to stabilize pier protection at piers B, C, D, and E on the western span of the San Francisco/Oakland Bay Bridge. Work will be conducted 7-days a week, 6 am to 4:30 pm, 17 Apr, through 30 Jun, 2023. The 150' X 54' Crane Barge Kelso will be anchored at various locations during the work and will be monitoring VHF-FM Channels 13, 14, and 16. Barges, anchors and anchor lines will not impede the D-E shipping channel during the work. The barges will remain on-scene, unmanned, during non-working hours. (See SAN FRANCISCO BAY-BRIDGE.pdf in the enclosure section for typical barge locations and limits of anchor lines). During the workday, the barge can be moved for the safety of navigation with two hours advanced notice. After working hours, the barge can be moved with six hours advanced notice. For information at the work site contact 510-867-4545; 510-385-6756; 415-680-0788 or 415-306-3297. For further information, contact the Coast Guard Bridge Office at 510-437-3515.

Chart 18650

LNM: 13/23

**NORTHERN CALIFORNIA-SAN FRANCISCO BAY-BRIDGE**

GOLDEN GATE BRIDGE-Four 54' temporary under deck platforms; two, 75' and 425' north of the south tower, and two, 225' and 2,100' south of the north tower have been installed at the bridge. Temporary platforms reduce vertical clearance at the bridge by no more than 14'. The bridge's maintenance travelers are in use during the project and will remain outboard of the furthest north and furthest south temporary platforms. The temporary platforms and maintenance travelers are lighted at night with all-round red lights (see PlatformLighting\_GG\_Bridge\_31Mar23.pdf at the end of this notice). For navigational safety the maintenance travelers can be moved by contacting the Golden Gate Bridge at 415-923-2220. Work is being conducted Monday through Saturday, 0700-1700 and 2100-0500. For conditions at the bridge, mariners can contact the contractor at 415-716-0384. For more details or comments contact the Coast Guard Bridge Office at 510-437-3515.

Chart 18649

LNM: 14/23

**NORTHERN CALIFORNIA-SAN FRANCISCO BAY-BRIDGE**

SAN MATEO-HAYWARD BRIDGE-Work continues on the causeway portion of the bridge, east of pier 38, 0700 to 1530, Monday through Friday, until 28 Dec, 2023. Various size barges will be used during the project, the largest being a 100' X 20' flexifloat barge. During the work day, barges will either be spudded down or tied to the bridge piers, no anchors or anchor line will be utilized. After regular working hours the unmanned barge will be left on-site. For the safety of navigation, the barges can be moved with one-hour advance notice. For conditions at the bridge mariners can contact Golden State Bridge, Inc., on VHF-FM Marine Radio Channels 13, 14, and 16 or by cell phone at 707-246-0725, 925-260-2104, or 925-382-7288. For more details or comments contact the Coast Guard Bridge Office at 510-437-3515.

LNM: 20/22

**NORTHERN CALIFORNIA-SAN FRANCISCO BAY-BRIDGE**

RICHMOND-SAN RAFAEL BRIDGE-Concrete/steel repairs and cleaning of the bridge continues. Work is being conducted Monday through Friday, 0500 to 1700, until 15 May, 2023. Temporary underdeck platforms have been installed from the western shore to pier 33 and between piers 43-46 reducing vertical clearance in each span by three feet. The upstream and downstream lower edge of each temporary platform is lighted at night with steady burning red lights (see R-SR\_Bridge\_Temp\_Platform\_Lighting.pdf at the end of this notice.) Two 160' X 50' barges and one 110' X 32' barge are being used to assist in the installation of the platforms and for the blasting and painting. One barge has been secured to pier 8 and will be left on-scene, overnight, unmanned. The outboard corners of the barge at pier 8 is lighted at night with steady red lights. Barge "37" and barge "32" can be contacted on VHF-FM Ch. 16, 13 and 14. At no time will the work impede the east or west navigation spans or their auxiliary spans. For conditions at the bridge, mariners can contact the contractor at 860-904-8787 or 443-847-6286. For further information concerning this project contact the Coast Guard Bridge Office at 510-437-3515.

Chart 18653

LNM: 16/21

**NORTHERN CALIFORNIA-SAN FRANCISCO BAY-BRIDGE**

SAN MATEO-HAYWARD BRIDGE – The painting of the steel towers continues. Work is being conducted Monday through Friday, 7am to 12am until June 2024. Temporary worker platforms will be installed around the base of piers 2 to 11 and 28-37, reducing horizontal clearance in each of those spans by 6 feet. Temporary underdeck work platforms will be installed in spans 12-18 and 21-27, reducing the vertical clearance by three feet. Tarpaulins will be used as containment around all pier columns. An Andersen under-bridge below-deck worker access vehicle will be used during the installation of the temporary containment and temporary platforms. At no time will in-water work be conducted in the main navigation span between piers 19-20, and mariners should this span at all times during this project. For conditions at the bridge, mariners can contact the contractor at 407-489-5386, 303-579-1383, or 910-279-3365. For further information contact the Coast Guard Bridge Office at 510-437-3515.

LNM: 46/22

**NORTHERN CALIFORNIA-SAN FRANCISCO BAY-DETERIORATING CONCRETE PILINGS**

Deteriorating concrete pilings above and below the waterline are present in the vicinity of the the south edge of Southampton Shoal Light (LLNR 5480). Mariners are requested to transit the area with caution. For more details or comments contact LT Miranda Brumbaugh at 510-437-2978 or Miranda.E.Brumbaugh@uscg.mil.

Chart 18649 LNM: 23/15

**NORTHERN CALIFORNIA-SAN FRANCISCO BAY-SURVEY OPERATIONS**

SAILDRONE, INC. is conducting oceanographic survey operations and will operate Unmanned Surface Vehicles called SAILDRONE Explorers and SAILDRONE Voyagers until 30 April 2023. The operations will be conducted 0.8 nm South of General Anchorage 9 in San Francisco Bay and bounded by the following coordinates:

Area 1:

37-44.41N 122-18.26W

37-44.01N 122-17.24W

37-43.23N 122-18.10W

37-44.09N 122-19.03W

Area 2:

37-42.16N 122-18.28W

37-42.43N 122-17.09W

37-41.31N 123-16.26W

37-41.02N 123-17.46W

The SAILDRONE Explorer is 23 feet long, 16 feet tall, painted orange with a white all-around light on top and marked SAILDRONE. The SAILDRONE Voyager is 33 feet long, 21 feet tall and painted orange or gray with a tri-color light on top. SAILDRONES will broadcast AIS and travel at a speed up to 5 knots. Mariners are requested to transit the area with caution. For more details or comments contact SAILDRONE mission control at missioncontrol@saildrone.com or 510-722-6070.

Chart 18649 LNM: 10/23

**NORTHERN CALIFORNIA-SAN FRANCISCO BAY-TREASURE ISLAND-SUNKEN VESSEL**

The Coast Guard received a report of a sunken vessel in the North West corner of Treasure Island at 37-49-51N 122-22-60W and is in approximately 40ft of water with the mast visible above water. Mariners are advised to exercise due caution while transiting in the area. For more details or comments contact USCG Sector San Francisco Waterways at 415-399-7443 or SFWaterways@uscg.mil.

Chart 18650 LNM: 06/23

**NORTHERN CALIFORNIA-SAN LEANDRO BAY-BRIDGE**

BAY FARM ISLAND HIGHWAY AND PEDESTRIAN BRIDGES-The pier protection system at the bridges have deteriorated and may not offer adequate protection for the bridges as well as vessels transiting the bridge. Mariners are urged to transit both bridges with caution. The bridge owner is in the process of designing a replacement pier protection system. For more details or comments contact the Coast Guard Bridge Office at 510-437-3514.

Chart 18649 LNM: 31/22

**NORTHERN CALIFORNIA-SAN LORENZO RIVER-BRIDGE**

LAUREL STREET BRIDGE- A new water conveyance pipeline is being installed. To conduct the work, a bucket truck on the bridge deck will be utilized to suspend a mobile platform from the side of the bridge, vertical clearance will be temporarily reduced by 6-feet. Work is being conducted Monday through Friday, 7 am to 4:30pm, until 28 April, 2023. There will be no in-water work or equipment used during this project. Mariners are urged to use caution while transiting the bridge. For further information contact the Coast Guard Bridge Office at 510-437-3515.

Chart 18685 LNM: 02/23

**NORTHERN CALIFORNIA-SAN PABLO BAY-TORMEY-MARINE CONSTRUCTION**

The Dutra Group will be conducting marine construction to the Phillips 66 San Francisco Refinery located West of the Carquinez Bridge from 03 January, 2023 until 31 December, 2023, during daylight hours. Construction will be bounded by the following coordinates:

38-03-22N 122-15-52W

38-03-25N 122-15-33W

38-03-06N 122-15-34W

38-03-06N 122-15-39W

Crane barge 1, along with a work boat, will be conducting operations and monitoring VHF-FM Chan. 9, 16, and 77. Mariners are requested to transit the area with caution. For more details or comments contact Nicholas Dino at 707-389-0505.

Charts: 18654 18655

LNM: 51/22

**NORTHERN CALIFORNIA-SANTA CRUZ HARBOR-SHOALING**

As of 9 January, 2023, there is significant shoaling reported in Santa Cruz Harbor caused by weather event in the area. Shoaling reduces charted depth at the entrance and various locations of the harbor. Vessel operators should consider this information for inbound and outbound transits or avoid area until sufficient draft clearances are made available. For latest update on conditions, the Santa Cruz Harbor Office can be contacted at 831-475-6161 or 831-471-1131 as well as VHF-FM Chan. 09 or 16.

Chart 18685 LNM: 02/23

#### **NORTHERN CALIFORNIA-SANTA CRUZ-DREDGE OPERATIONS**

The Santa Cruz Port District is conducting dredging operations in the harbor entrance from 15 November, 2022 until 30 April, 2023. A submerged dredging equipment may be in vicinity of the entrance. All mariners entering the Santa Cruz Harbor are requested to contact the dredge TWIN LAKES on VHF-FM Chan. 8 during working hours of 7:00am to 4:00pm Monday through Friday to obtain safe passage information. For information after hours please contact the Santa Cruz Harbor Patrol at 831-475-6161 or 831-471-1131. Mariners are requested to transit the area with caution. For more details or comments contact Blake Anderson at 831-475-6161.

Chart 18685

LNM: 45/22

#### **NORTHERN CALIFORNIA-SUISUN BAY-CONSTRUCTION OPERATIONS**

The Dutra Group will be conducting construction in Suisun Bay from 3 April, 2023 until 17 April, 2023 at position 38-03-55N, 122-03-31W. DB-24, PHYLLIS T work boat, supply dredge, and miscellaneous work will be conducting operations. All vessels will be monitoring VHF-FM Chan. 9, 13, 14, 16, and 80A. Mariners are requested to transit the area with caution. For more details or comments contact Jason Tse at 415-300-5336.

Chart 18656

LNM: 14/23

#### **NORTHERN CALIFORNIA-SUISUN BAY-HAZARD TO NAVIGATION**

The Coast Guard has received a report of an uncharted private aid in Suisun Bay between Suisun Bay Channel Lighted Buoy 20 (LLNR 6525) and Suisun Bay Channel Lighted Buoy 22 (LLNR 6540) in approximate position 38° 03'30.3" N 121° 59' 18.9" W. This private aid is a single pile structure with "Danger" markings and may be unlit or displaying a yellow light. Mariners are advised to use caution when transiting the area. For more details or comments contact Coast Guard Sector San Francisco Waterways at 510-612-9729.

Chart 18656

LNM: 04/23

#### **NORTHERN CALIFORNIA-SUISUN BAY-MONTEZUMA SLOUGH-MARINE CONSTRUCTION**

The California Department of Water Resources advises that will be installing flashboards at the Suisun Marsh salinity control structure, located 2.2 nautical miles from the easterly end of Montezuma Slough at 38-05-36N 121-53-07W. Mariners are advised to use the boat lock. The boat lock signal is a standard traffic light and the operator will monitor VHF-FM Chan. 13. Mariners are requested to transit the area with caution. For more details or comments contact Ian Uecker at 916-574-2991.

Chart 18656

LNM: 34/21

#### **NORTHERN CALIFORNIA-VENICE ISLAND-CONSTRUCTION OPERATIONS**

The Dutra Group will be conducting construction at Venice Island from 21 March, 2023 until 31 October, 2023 during daylight hours to complete levee rehabilitation. Two crane barges approximately 40'x120' will be anchored along North Mokelumne River between Tyler Island and Staten Island. TM 20 and two 40'x80' flexi barges secured together along with a work boat and two tugboats will be conducting operations. All vessels will be monitoring VHF-FM Chan. 9, 16, and 68A. Mariners are requested to transit the area with caution. For more details or comments contact Scott Brooks at 707-333-5209.

Charts: 18661 18662

LNM: 12/23

#### **SAN DIEGO-OCEANOGRAPHIC SURVEY-OCEAN MONITORING**

The City of San Diego Marine Biology Lab is conducting year-round ocean monitoring sampling in the vicinity of the South Bay Ocean Outfall and Point Loma Ocean Outfall. The Ocean Monitoring Program conducts trawl sampling, benthic sampling with a double Van Veen sediment grab, vertical CTD casts and horizontal tows with an undulating underwater vehicle, ROV surveys and multiple moorings are deployed in the region below. Ocean sampling will be conducted in an area bound by the following coordinates:

32-31-54N 117-11-11W

32-32-10N 117-11-57W

32-32-03N 117-12-06W

32-32-33N 117-11-56W

32-40-10N 117-19-22W

32-40-04N 117-19-34W

32-39-37N 117-19-32W

32-39-56N 117-19-39W

32-40-10N 117-16-55W

The M/V OCEANUS and M/V MONITOR III when in the area will monitor VHF-FM Chan. 16. Mariners are requested to transit the area with caution. For more details or comments contact Adriano Feit at 619-758-2377 or 858-882-7055.

Charts: 18765 18772

LNM: 43/21

#### **SOUTHERN CALIFORNIA - SANTA CRUZ - WAVERIDER BUOY**

A Waverider buoy has been deployed at 36-56-04N 122-02-02W near Santa Cruz, CA. The buoy will be used for wave measurements to aid the Coastal Data Information Program. For questions, contact Ross Timmerman at 619-818-8387.

Chart 18685

LNM: 33/22

#### **SOUTHERN CALIFORNIA - CAMP PENDLETON - TEMPORARY BUOYS**

The Marine Corps Warfighting Laboratory has deployed 4 temporary buoys just outside of the surf zone in the vicinity of Camp Pendleton.

Approximate positions:

33-16.04N, 117-27.06W

33-17.23N, 117-28.04W

33-17.46N, 117-28.26W

33-17.63N, 117-28.43W

The buoys will be in place until 15 August, 2023. Mariners are requested to transit the area with caution. For questions, contact Peter Young at 757-761-0395.

Chart 18774

LNM: 09/23

#### **SOUTHERN CALIFORNIA - SAN DIEGO / POINT LOMA - OCEANOGRAPHIC OPERATIONS**

The Scripps Institution of Oceanography research vessel ROBERT GORDON SPROUL (Call Sign WSQ-2674) will 24-hour conduct surface to floor oceanographic 22 April, 2023 until 23 April, 2023 in the vicinity of the following positions:

32-38-00N 117-23-00W

**SOUTHERN CALIFORNIA – SAN DIEGO / POINT LOMA – OCEANOGRAPHIC OPERATIONS**

32-39-00N 117-32-00W  
32-40-00N 117-22-00W

During over-the-side operations, R/V ROBERT GORDON SPROUL will be restricted in ability to maneuver. R/V ROBERT GORDON SPROUL will be monitoring VHF-FM Chan. 13 and 16. Mariners are requested to transit the area with caution. For more comments or details contact David Minor at 858-534-1645.

Chart 18740

LNM: 15/23

**SOUTHERN CALIFORNIA – SAN DIEGO / POINT LOMA – OCEANOGRAPHIC OPERATIONS**

The Scripps Institution of Oceanography research vessel ROBERT GORDON SPROUL (Call Sign WSQ-2674) will 24-hour conduct surface to floor oceanographic 29 April, 2023 in the vicinity of the following positions:

32-38-00N 117-23-00W  
32-39-00N 117-32-00W

32-40-00N 117-22-00W

During over-the-side operations, R/V ROBERT GORDON SPROUL will be restricted in ability to maneuver. R/V ROBERT GORDON SPROUL will be monitoring VHF-FM Chan. 13 and 16. Mariners are requested to transit the area with caution. For more comments or details contact David Minor at 858-534-1645.

Chart 18740

LNM: 15/23

**SOUTHERN CALIFORNIA – SAN DIEGO / POINT LOMA – OCEANOGRAPHIC OPERATIONS**

The Scripps Institution of Oceanography research vessel ROBERT GORDON SPROUL will conduct 24-hour oceanographic surface to seafloor operations from 22 April 2023 until 23 April, 2023 in the vicinity of the following coordinates:

32-38-00N 117-23-00W  
32-39-00N 117-32-00W

32-40-00N 117-22-00W

Exact timing and duration of each station is dependent on operational needs and weather conditions. During over-the-side operations, the vessel will be restricted in ability to maneuver; all traffic requested to give R/V ROBERT GORDON SPROUL a wide berth. R/V ROBERT GORDON SPROUL will monitor VHF-FM Chan. 13 and 16. Mariners are requested to transit the area with caution. For more details or comments contact David Minor at 858-414-4923.

Chart 18740

LNM: 15/23

**SOUTHERN CALIFORNIA- ANAHEIM BAY- TEMPORARY BUOYS**

The U.S. Coast Guard has established temporary Buoys in Anaheim Bay at the following locations.

Temp Buoy #9- FI G 4s

Position: 33-43-927N 118-05-981W

Temp Buoy #10 Q R

Position: 33-43-963N 118-05-818

Temp Buoy #11 FL G 4s

Position: 33-44-077N 118-05-862W

Temp Buoy #13 FI G 4s

Position: 33-44-211N 118-05-799W

For more details or comments contact LT Miranda Brumbaugh at 510-437-2978 or Miranda.E.Brumbaugh@uscg.mil.

Charts: 18746 18749

LNM: 29/22

**SOUTHERN CALIFORNIA- PORT OF LOS ANGELES– FENDER REPAIR OPERATIONS**

Jilk Heavy Construction Co. will conduct marine construction at the Valero Wilmington Refinery, LA Berth 163-164 in Wilmington, CA. Operations will be 27 March, 2023 until 26 May, 2023 during daylight hours at 33-45-32N 118-16-04W. A crane barge will be in the area and monitoring VHF-FM Chan. 72. Mariners are requested to transit the area with caution. For more details or comments contact Annie Incontro at 310-345-2334.

Charts: 18749 18751

LNM: 12/23

**SOUTHERN CALIFORNIA-ALAMITOS BAY-BRIDGE**

2ND STREET BRIDGE-The green center channel lights on the bridge are reported extinguished.

APPIAN WAY BRIDGE-The west side green center channel light and red pier lights on the bridge are reported extinguished.

For further information contact the Coast Guard Bridge Office at 510-437-3514.

Chart 18749

LNM: 13/23

**SOUTHERN CALIFORNIA-CATALINA ISLAND-BUOY DEPLOYMENT**

Marine BioEnergy INC. will deploy a yellow research buoy on 29 November, 2022 near Catalina Island, CA with the characteristics of FI Y 4s at 33-28-21N 118-29-33W. The buoy will be deployed until 29 May, 2023. Mariners are requested to transit the area with caution. For more details or comments contact Cindy Wilcox at 818-952-6018.

Chart 18740

LNM: 47/22

**SOUTHERN CALIFORNIA-CHANNEL ISLANDS HARBOR-BRIDGES**

CHANNEL ISLANDS BLVD EAST (MANDALAY BAY) & CHANNEL ISLANDS BLVD WEST (EDISON CANAL) BRIDGES-Rehabilitation of the bridges will take place 7 am to 3:30 pm, Monday through Friday, 15 February, 2023 through 15 August, 2023. No in-water work will be conducted at the east bridge. At the west bridge two 5' X 20' X 10' flexi-floats will be employed and will be secured with two 35' spuds. The flexi-floats will reduce horizontal clearance in the channel by no more than 10 feet. 8' X 11'cofferdams will encase the bridge columns at each bent. Only one channel of the west bridge will be impacted at any one time. The ends of the cofferdams and each corner of each flexi-floats will be lighted at night with steady burning red lights (See Channel\_Islands\_Bridge\_Rehab.pdf at the end of this article.) For the safety of navigation, the flexi-floats can be moved with a 30-minute advance notice to the contractor. Mariners are requested to approach the west bridge with caution and avoid the span of the bridge where work is being conducted. For further information contact the Coast Guard Bridge Office at 510-437-3516.



**SOUTHERN CALIFORNIA-CHANNEL ISLANDS HARBOR-BRIDGES**

Chart 18725

LNM: 06/23

**SOUTHERN CALIFORNIA-IMPERIAL BEACH-MARINE CONSTRUCTION**

The Port of San Diego will commence Imperial Beach Pier Enhancements at 32-34-46N 117-07-54W from 15 January, 2023 until 15 June, 2023. Mariners are requested to transit the area with caution. For more details or comments contact the Port of San Diego at 619-540-0230.

Chart 18765

LNM: 03/23

**SOUTHERN CALIFORNIA-LONG BEACH HARBOR-MARINE CONSTRUCTION**

Rincon Consultants Inc. will be conducting marine construction within the Long Beach Harbor at Junipero Beach at 33-45-42N 118-09-51W from 28 November, 2022 until 31 May 2023. A small craft will be on scene constructing a cofferdam during daylight hours. The vessel will be monitoring VHF-FM Chan. 16. Mariners are requested to transit the area with caution. For more details or comments contact Eric Schaad at 559-514-1837.

Chart 18751

LNM: 46/22

**SOUTHERN CALIFORNIA-LONG BEACH HARBOR-MARINE CONSTRUCTION**

Dutra Construction Company is conducting marine construction in the Port of Long Beach, CA at the Carnival Cruise Lines Wharf H, 7 days a week until August, 2023. Construction crews will work pier side and will be monitoring VHF-FM Chan. 13, 16, and 72. Mariners are requested to transit the area with caution. For more details or comments contact Andrew Hunt at 415-837-6640.

Charts: 18746 18749 18751

LNM: 08/23

**SOUTHERN CALIFORNIA-LOS ANGELES HARBOR-DREDGE OPERATIONS**

Manson Construction Co. is conducting dredge operations at the Port of Los Angeles berths 136-139 at 33-45-58N 118-16-24W from 10 April, 2023 until 22 April, 2023. DB VALHALLA, will be assisted by TB ELMER M, PETER M, JEFFEREY M, SB WAHOO, DS EASTPORT, DS NORTHPORT, and DS SOUTHPORT. All vessels will be monitoring VHF-FM Chan. 16 and 67. Dredged materials will be disposed of at disposal site LA-2 at 33-37-06N 118-17-24W. Mariners are requested to transit the area with caution. For more details or comments contact Sergio Covarrubias at 562-305-3973.

Chart 18751

LNM: 13/23

**SOUTHERN CALIFORNIA-LOS ANGELES/LONG BEACH HARBOR-BRIDGE**

VINCENT THOMAS BRIDGE-A 180 ft temporary platform, used to paint the underside of the bridge, continues to move west from the east tower. The platform reduces vertical clearance of the bridge by 5.5 ft. It is anticipated the temporary platform will arrive at the east edge of the shipping channel in summer of 2024. The upstream and downstream corners and every 50' along the upstream and downstream side of the platform is lighted at night with steady burning red lights (see V\_Thomas\_Platform\_Lighting1.pdf at the end of this notice). Work will take place during daylight hours, Monday through Friday. For conditions at the bridge mariners can contact 213-479-4138, 213-479-1144 or 310-261-9552. For more details or comments contact the Coast Guard Bridge Office at 510-437-3516.

Chart 18749

LNM: 30/22

**SOUTHERN CALIFORNIA-LOS ANGELES/LONG BEACH HARBOR-BRIDGE**

PIER 400 BRIDGE MODIFICATION- Construction is taking place Monday through Friday, 6am to 4pm, until 30 Sep, 2023. All in-water equipment and temporary structures will occur within the two existing bridges, and will not impact marine traffic in the area. For conditions at the work site, contact 714-536-9553 or 510-846-0325. For further information contact the Coast Guard Bridge Office at 510-437-3461.

Chart 18749

LNM: 26/22

**SOUTHERN CALIFORNIA-LOS CERRITOS CHANNEL-BRIDGE**

PACIFIC COAST HIGHWAY BRIDGE-The green center channel lights on the bridge are extinguished. For further information contact the Coast Guard Bridge Office at 510-437-3514.

Chart 18749

LNM: 13/23

**SOUTHERN CALIFORNIA-MORRO BAY BREAKWATER LIGHT-SOUND SIGNAL CHANGE**

Morro Bay Breakwater Light (LLNR 240) sound signal has been replaced with a Mariner Radio Activated Sound Signal (MRASS). The sound signal can be activated by keying the microphone 6 times within 10 seconds on VHF-FM Chan. 83A and will sound 1 blast every 30 seconds for 15 minutes.

Charts: 18700 18703

LNM: 42/22

**SOUTHERN CALIFORNIA-NATIONAL CITY-MARINE CONSTRUCTION**

R. E Staite will be conducting dredging operations and marine construction at the Austal USA facility located in National City, California at 32-39-29N 117-07-07W from 1 April, 2023 until 30 September, 2023. DB Point Loma, DB William F, DB Palomar and RES 180 along with multiple scows a survey boat and various deck barges will conduct operations. All vessels will be monitoring VHF-FM Chan. 16. All dredged material will be disposed of at LA-5 ocean disposal site. Mariners are requested to transit the area with caution. For more details or comments contact Erick Myers at 619-233-0178.

Chart 18773

LNM: 12/23

**SOUTHERN CALIFORNIA-NAVAL BASE POINT LOMA-MARINE CONSTRUCTION-FENDER REPAIR**

R.E. Staite Engineering Inc. will conduct marine construction and fender repairs at Naval Base Point Loma at Fuel Pier at 32-42- 01N 117-14-09W from 10 April, 2023 until 28 April, 2023. Vessels DB WILLIAM F, RES Flexi-Float Barge, push boat JENIE R, work boat JOHN DRAKE. All vessels will monitor VHF-FM Chan. 16. Mariners are requested to transit the area with caution. For more details or comments contact Erick Myers at 619-233-0178.

Chart 18773

LNM: 15/23

**SOUTHERN CALIFORNIA-NEWPORT BEACH-MARINE CONSTRUCTION**

Anchor QEA will be conducting a dock replacement for Anchorage Way Marina Dock within Newport Beach, California at 33-36-44N 117-55-25W from 17 April, 2023 until 25 May, 2023. TB CONSTRUCTOR and barge will be monitoring VHF-FM Chan. 16. Mariners are requested transit the area with caution. For more details or comments contact Chad Lucas at 707-430-3565.

Chart 18746

LNM: 11/23

**SOUTHERN CALIFORNIA-OCEANSIDE HARBOR-DREDGE OPERATIONS**

Manson Construction Co. is conducting hydraulic maintenance dredging at Oceanside harbor, Main channel and Entrance channel 33-12-32N 117-24-07W, 24hrs a day, from 10 April, 2023 until 26 May, 2023. DB MORRIS, DB FREYA, Tender PUP, Tender CUB, and Survey Boat RUSTLER will be conducting operations and monitoring VHF-FM Chan. 16 and 67. Materials will be transported through floating, submerged and shore pipeline to the disposal area North Coast Village, Surf rider way, and Oceanside pier. Mariners are requested to transit the area with caution. For more details or comments contact Max Oviedo at 206-619-7729.

Chart 18758

LNM: 13/23

**SOUTHERN CALIFORNIA-OXNARD-ROCK REVETMENT REPAIR**

Larison Contracting will be conducting repair and replacement of rock revetment in Oxnard CA at 34-10-03 N 119-13-31 W until 12 June, 2023. Operation will be monitoring VHF-FM Chan. 16. Mariners are requested to transit at a safe speed to minimize wake and proceed with caution after making passing arrangements. For more information, contact Michael Tripp at 562-427-1900.

Chart 18725

LNM: 45/22

**SOUTHERN CALIFORNIA-POINT CONCEPTION-NOAA BUOY DEPLOYMENT**

NOAA's Pacific Marine Environmental Laboratory deployed a buoy 11 nautical miles due west of Point Conception, CA. at 34-27-31N 120-41-10W. The buoy named Harvest 22 has a yellow top with gray sides and a flashing amber light every 4 seconds. Mariners are advised to use due caution when transiting this area. For more details or comments contact Cabot Zucker at 425-477-9554.

LNM: 13/22

**SOUTHERN CALIFORNIA-PORT OF LONG BEACH-MARINE CONSTRUCTION**

Dutra Construction Company will be conducting marine construction and dredging operations of Wharf H at the Port of Long Beach from 01 November, 2022 until 01 June, 2023. Barge WILLIAM F will be monitoring VHF-FM Chan. 16 and 82. Mariners are requested to transit the area with caution. For more details or comments contact Andrew Hunt at 415-847-6640.

Charts: 18749 18751

LNM: 41/22

**SOUTHERN CALIFORNIA-PORT SAN LUIS-MARINE CONSTRUCTION**

Connolly-Pacific will conduct marine construction to the Port San Luis breakwater from 6:30am to 6:30pm from 10 April, 2023 until 31 December, 2023. DB LONG BEACH will use anchors to position itself along the breakwater. These anchor positions will be marked by round white anchor cans and FI W 2s. Tug PATCONA and Tug LARCONA will be assisting DB LONG BEACH. All vessels will be monitoring VHF-FM Chan. 13, 16, and 79a. Mariners are requested to transit the area with caution. For more details or comments contact Tobey Walker at 562-577-0730 or John Riley at 562-577-3602.

Chart 18720

LNM: 15/23

**SOUTHERN CALIFORNIA-REDONDO BEACH-MARINE CONSTRUCTION**

Construction will be Demolishing the Redondo Beach Sports Fishing Pier in Redondo Beach, CA at 33-50-35N 118-23-38W from 27 February, 2023 until 31 May, 2023. Dive operations will be conducted at the pier and assisted by a crane barge. Operations will be between 6:00am until 5:00pm, Monday through Friday. The site superintendent will be on scene monitoring VHF-FM Chan. 72. Mariners are requested to transit the area with caution. For more details or comments contact Joe Salgado at 310-505-0142.

Chart 18744

LNM: 09/23

**SOUTHERN CALIFORNIA-SAN CLEMENTE ISLAND-OCEANOGRAPHIC OPERATIONS**

The Scripps Institution of Oceanography research vessel ROBERT GORDON SPROUL (Call Sign WSQ-2674) will 24-hour conduct surface to floor oceanographic operations from 11 April, 2023 until 21 April, 2023 in the vicinity of 32-53-00N 117-33-00W and 33-31-00N 120-13-00W. During over-the-side operations, R/V ROBERT GORDON SPROUL will be restricted in ability to maneuver. R/V ROBERT GORDON SPROUL will be monitoring VHF-FM Chan. 13 and 16. Mariners are requested to transit the area with caution. For more comments or details contact David Minor at 858-534-1645.

Chart 18740

LNM: 14/23

**SOUTHERN CALIFORNIA-SAN DIEGO BAY- UNDERWATER OPERATION**

The U.S. Navy is conducting underwater operations at San Diego Bay near position 32-38-31N 117-11-04W. Operations will begin at 6:00am to 8:00pm on 5 April, 2023 until 1 May, 2023. A Warping Tug will be monitoring VHF-FM Chan. 13 and 16. Mariners are requested to transit the area with caution. For more details or comments contact NAV@LCS20.navy.mil.

Charts: 18765 18773

LNM: 15/23

**SOUTHERN CALIFORNIA-SAN DIEGO BAY-BRIDGE**

CORONADO BAY BRIDGE MAINTENANCE-Scaffolding installed between piers 11-12, 12-13, and 13-14, reduces vertical clearance by more than 8'. The upstream and downstream lower edges of the scaffolding are lighted at night with red lights. For more details or comments contact the Coast Guard Bridge Office at 510-437-3461.

Charts: 18772 18773

LNM: 13/20

**SOUTHERN CALIFORNIA-SAN DIEGO BAY-DIVE OPERATIONS**

Merkel & Associates will be conducting dive operations in San Diego, CA between the Coronado ferry landing and the Embarcadero from 09 April, 2023 until 12 April, 2023. The survey will be conducted on two pipelines which will be located between the following coordinates:

Pipeline number 1:

32-42-02N 117-10-26W and 32-42-30N 117-10-17W

Pipeline number 2:

32-41-57N 117-10-10W and 32-42-22N 117-10-07W

The Survey vessel OK1 (call sign CF3862UC) and a support vessel (call sign CF9883pv) will be monitoring VHF-FM Chan. 16. Mariners are requested to transit the area with caution. For more details or comments contact Keith Merkel at 858-560-5465.

Chart 18773

LNM: 13/23

**SOUTHERN CALIFORNIA-SAN DIEGO BAY-MARINE EVENT**

The Cortez Racing Association (CRA) will be sponsoring the CRA Opening Day Regatta on 20 May, 2023 from 10:00am to 5:00pm. The regatta will

**SOUTHERN CALIFORNIA-SAN DIEGO BAY-MARINE EVENT**

consist of 40 sailboats starting near Harbor Island, proceeding to San Diego Bay Channel Lighted Buoy 16 (LLNR 1620), continuing to San Diego Bay Channel Lighted Buoy 28 (LLNR 1980), and finishing back at Harbor Island. Mariners are requested to transit the area with caution. For more details or comments contact Dale Greaney at 760-470-1730.

Chart 18773

LNM: 15/23

**SOUTHERN CALIFORNIA-SAN DIEGO BAY-MARINE EVENT**

The Cortez Racing Association (CRA) will sponsor the CRA Tribute Regatta on 22 April, 2023 from 10:00am until 5:00pm. The regatta will consist of 40 sailboats starting near Harbor Island, proceeding to San Diego Bay Channel Lighted Buoy 16 (LLNR 1620), continuing to San Diego Bay Channel Lighted Buoy 28 (LLNR 1980), and finishing back at Harbor Island. Mariners are requested to transit the area with caution. For more details or comments, contact Dale Greaney at 760-470-1730.

Chart 18773

LNM: 13/23

**SOUTHERN CALIFORNIA-SAN DIEGO COUNTY-CONSTRUCTION**

Merkel & Associates will be conducting construction in San Diego, CA between Gaylord Chula Vista Resort and Convention Center from 10 April, 2023 until 28 April, 2023 during low tide for replacement and/or relocation of three storm drains and construction of associated new outfall structures within existing revetment slope of the San Diego Bay shoreline. Mariners are requested to transit the area with caution. For more details or comments contact Dan Newman at 619-495-9614.

Chart 18773

LNM: 15/23

**SOUTHERN CALIFORNIA-SAN DIEGO-MARINE EVENT**

The San Diego Yacht Club will be sponsoring the Etchells West Coast Series sailing event on 11 March, 2023 until 12 March 2023, 31 March, 2023 until 2 April, 2023 and 19 May until 21 May, 2023, from 11:00am to 5:00pm each day. The event will involve 35 sailing vessels racing on a course in Coronado Roads, starting at approximately 32-38-00N 117-10-42W and extending 1.2 nm windward in the prevailing wind direction. Mariners are requested to transit the area with caution. For more details or comments contact Jeff Johnson at 619-933-9922.

Chart 18773

LNM: 06/23

**SOUTHERN CALIFORNIA-SAN DIEGO-MARINE EVENT**

The San Diego Yacht Club will be sponsoring the One Design Weekend Monthly Series on various dates throughout CY2023. The event is scheduled for 21-22 January, 11-12 February, 29-30 April, 13 May, 10-11 June, 8-9 July, 12-13 August, 23-24 September, 14-15 October, 11-12 November, and 9 December, 2023. The events will involve approximately 30 sailing vessels racing on a course in Coronado Roads, CA. The course will be centered at approximately 32-39-30N 117-11-40W and will extend southwest up to 1.2 nm. Mariners are requested to transit the area with caution. For more details or comments contact Jeff Johnson at 619-933-9922.

Chart 18773

LNM: 03/23

**SOUTHERN CALIFORNIA-SAN LUIS OBISPO BAY-PORT SAN LUIS HARBOR-DREDGE OPERATIONS**

The Port of San Luis Harbor District will be conducting dredge operations at 35-10-25N 120-45-15W from 1 March, 2023 until 31 August, 2023 during daylight hours. Dredged materials will be disposed of at West Bluff Beach and Fisherman's Beach. Mariners are requested to transit the area with caution. For more details or comments contact Natalie Teeter at 805-595-5431.

Charts: 18700 18703

LNM: 09/23

**SOUTHERN CALIFORNIA-SAN NICHOLAS ISLAND-ATMOSPHERIC BUOY DEPLOYMENT**

Naval Air Systems Command has deployed an atmospheric sampling buoy 1.5 miles Northeast of San Nicolas Island at 33-18-00N 119-30-55W. The yellow buoy FI Y 3s, is 6 feet above the waterline and 2 feet in diameter. Mariners are requested to transit the area with caution. For more details or comments contact Kyle Edwards at 805-989-0672.

Chart 18720

LNM: 39/22

**SOUTHERN CALIFORNIA-SANTA BARBARA-AQUACULTURE ESTABLISHMENT**

Ocean Rainforest will be establishing an Aquafarm, starting on 30 March, 2023, located 4.3 NM South of Santa Barbara. The site is bound within four yellow boundary marker buoys with a flashing yellow light every 2 seconds (FI Y2s) in the following positions:

34-19-58.53N 119-42-45.72W

34-20-10.12N 119-42-45.72W

34-20-11.23N 119-42-07.24W

34-19-59.64N 119-42-07.92W

In line with the outer boundary buoys are small unlit floats that are marking the anchors associated with the Aquaculture area, the total buoys marking the anchors are 12 on the long axis of each side and 2 between the corner buoys on the short axis. Within the boundary markers will be 188 buoys/floats, see Enclosure AQUACULTURE ESTABLISHMENT.pdf enclosure below. The interior buoys of the aquaculture are in the shape of a rectangle with the outer edge marked with yellow buoys, every other buoy has a flashing yellow light flashing every 2 seconds (FI Y2s). Within the rectangle are 135 small unlit floats marking the cultivation lines. Mariners are advised to remain clear of this area as entanglement with associated equipment may occur. Vessel DANNY C will be conducting the deployment and monitoring VHF-FM Chan. 7 and 16. For more details or comments contact Ocean Rainforest Inc at 805-722-9601 or eliza@oceanrainforest.com.

Charts: 18720 18725

LNM: 11/23

**SOUTHERN CALIFORNIA-SANTA BARBARA-DREDGE OPERATIONS**

Pacific Dredge & Construction will be conducting continuous dredging operations in Santa Barbara Harbor from 8 April, 2023 until 30 April, 2023. The D/B SANDPIPER and anchor boat KATHLEEN will be in the area and monitoring VHF-FM Chan. 6 and 16. The dredge will be connected to a floating pipeline which may be up to 4,000' long. A High Voltage Power cable connects the Dredge to the shore and mariners are requested to transit the area with caution. For more details or comments contact Gary Foster at 805-331-2995.

Chart 18725

LNM: 14/23

**SOUTHERN CALIFORNIA-TWO HARBORS-CATALINA ISLAND-BUOY DEPLOYMENT**

Marine BioEnergy INC. will be conducting biomass research from 17 November, 2022 until 15 May, 2023 at 33-28-12N 118-29-33W. The R/V SEA SCOUT will be deploying a yellow buoy with a light characteristic of FI Y 4s to study the growth of kelp in the area. Mariners are requested to transit

**SOUTHERN CALIFORNIA-TWO HARBORS-CATALINA ISLAND-BUOY DEPLOYMENT**

the area with caution. For more details or comments contact Cindy Wilcox at 818-952-6018.

Charts: 18746 18757

LNM: 46/22

**SOUTHERN CALIFORNIA-VANDENBERG AFB-HAZARDOUS OPERATIONS**

Hazardous operations will be conducted from Vandenberg AFB, CA for Western Range 2317 from 11:31pm on 18 April, 2023 until 6:27pm on 20 April, 2023. Hazardous operation areas are bounded by the following coordinates:

Hazard area A:

- 34-40-00N - 121-26-00W
- 34-40-00N - 120-54-00W
- 34-46-00N - 120-37-00W
- 34-57-00N - 120-37-00W
- 34-58-00N - 120-59-00W
- 34-58-00N - 121-24-00W
- 34-40-00N - 121-26-00W (CLOSING THE FIRST POINT)

Hazard area B:

- 34-16-00N - 125-09-00W
- 34-33-00N - 125-12-00W
- 34-53-00N - 122-22-00W
- 34-35-00N - 122-20-00W
- 34-16-00N - 125-09-00W (CLOSING THE FIRST POINT)

Mariners are advised to remain clear of these areas for the duration of operations. For more details or comments contact Vandenberg AFB at 805-606-8825 or on VHF-FM Chan. 06 or 16.

Charts: 18700 18720 18740

LNM: 15/23

**SOUTHERN CALIFORNIA-VANDENBERG AFB-HAZARDOUS OPERATIONS**

Hazardous operations will be conducted from Vandenberg AFB, CA for Western Range 2316 from 12 April, 2023 until 15 April, 2023. Hazardous operation areas are bounded by the following coordinates:

HAZARD AREA

- 34-40-00N - 120-39-00W
- 34-39-00N - 120-28-00W
- 34-25-00N - 120-28-00W
- 31-21-00N - 121-14-00W
- 31-23-00N - 121-21-00W
- 34-35-00N - 120-43-00W (CLOSING THE FIRST POINT)

B. HAZARD AREA

- 31-23-00N - 121-21-00W
- 31-21-00N - 121-14-00W
- 29-46-00N - 121-13-00W
- 29-08-00N - 121-27-00W
- 29-29-00N - 122-12-00W (CLOSING THE FIRST POINT)

Mariners are advised to remain clear of these areas for the duration of operations. For more details or comments contact Vandenberg AFB at 805-606-8825 or on VHF-FM Chan. 06 or 16.

Charts: 18700 18720 18740

LNM: 14/23

**SOUTHERN CALIFORNIA-VENTURA HARBOR-DREDGE OPERATIONS**

Manson Construction Co. is conducting hydraulic maintenance dredging of the Ventura Harbor Main Channel, entrance and sand trap at 34-14-51N 119-16-07W 24 hours a day from 01 March, 23 until 15 April, 2023. Dredge HR MORRIS, DB FREYA, dredge tender PUP, dredge tender CUB, and survey boat RUSTLER will monitor VHF-FM Chan. 16 and 67. Material will be transported through floating pipeline, submerged pipeline, and shore pipeline to the disposal area south of surfer's knoll. Mariners are requested to transit the area with caution. For more details or comments contact Project Manager Max Oviedo at 206-619-7729.

Chart 18725

LNM: 08/23

**SECTION VIII - LIGHT LIST CORRECTIONS**

An Asterisk \*, indicates the column in which a correction has been made to new information

(1) No.	(2) Name and Location	(3) Position	(4) Characteristic	(5) Height	(6) Range	(7) Structure	(8) Remarks	
4480	<i>San Francisco Bay Anchorage 6 Lighted Mooring Buoy A</i>	37-49-43.430N 122-21-11.390W	Fl W 4s			White with blue band.	Name Change. Private Aid.	15/23
	*						*	
4480.1	<i>San Francisco Bay Anchorage 6 Lighted Mooring Buoy B</i>	37-49-55.300N 122-21-16.460W	Fl W 4s			White with blue band.	Name Change. Private Aid.	15/23
	*						*	

## SECTION VIII - LIGHT LIST CORRECTIONS (Continued)

(1) No.	(2) Name and Location	(3) Position	(4) Characteristic	(5) Height	(6) Range	(7) Structure	(8) Remarks	
4480.4	<i>San Francisco Bay Anchorage 6 Lighted Mooring Buoy I</i>	37-49-48.000N 122-21-03.000W	Fl W 4s			White with Blue Band.	Name Change. Private Aid.	15/23
	*					*	*	
4480.5	<i>San Francisco Bay Anchorage 6 Lighted Mooring Buoy F</i>	37-49-44.100N 122-21-21.930W	Fl W 4s			White with blue band.	Name Change. Private Aid.	15/23
	*						*	
4480.6	<i>San Francisco Bay Anchorage 6 Lighted Mooring Buoy G</i>	37-49-52.170N 122-21-27.650W	Fl W 4s			White with blue band.	Name Change. Private Aid.	15/23
	*						*	
4480.8	<i>San Francisco Bay Anchorage 6 Lighted Mooring Buoy K</i>	37-49-36.360N 122-21-09.000W	Fl W 4s			White with Blue Band.	Name Change. Private Aid.	15/23
	*						*	
4827.1	<i>San Francisco Bay Anchorage 9 Lighted Mooring Buoy A</i>	37-46-16.173N 122-19-38.044W	Fl W 2s			White with Blue Band.	Name Change. Private Aid.	15/23
	*						*	
4828.1	<i>San Francisco Bay Anchorage 9 Lighted Mooring Buoy B</i>	37-46-07.632N 122-19-25.763W	Fl W 2s			White with Blue Band.	Name Change. Private Aid.	15/23
	*						*	

---

**PUBLICATION CORRECTIONS**


---

**ANNOUNCEMENT – U.S. Coast Pilot® 7 and U.S. Coast Pilot® -NEW EDITIONS-Spring 2022**

PUBLICATION–National Oceanic Atmospheric Administration (NOAA) – U.S. Coast Pilot 7, Pacific Coast: California, 54th Edition, 2022, has been issued and is ready for free download and weekly updates at [www.nauticalcharts.noaa.gov/publications/coast-pilot/index.html](http://www.nauticalcharts.noaa.gov/publications/coast-pilot/index.html).

Only Print-on-Demand (POD) bound copies are available for purchase; visit [nauticalcharts.noaa.gov/publications/print-agents.html#coast-pilot](http://nauticalcharts.noaa.gov/publications/print-agents.html#coast-pilot). The 2022 Edition cancels the preceding 2021 Edition, and incorporates all previous corrections.

LNM: 21/22

**ANNOUNCEMENT – U.S. Coast Pilot® 7 and U.S. Coast Pilot® 10 - NEW EDITIONS – Spring 2020**

U.S. Coast Pilot 7 will be divided into two editions in the spring 2020 due to its large size. The following are the projected new editions that will be issued on the same date and ready for free download and weekly updates on June 9, 2020, at [nauticalcharts.noaa.gov/publications/coast-pilot/index.html](http://nauticalcharts.noaa.gov/publications/coast-pilot/index.html).

PUBLICATION–National Oceanic Atmospheric Administration (NOAA) – U.S. Coast Pilot 7, Pacific Coast: California 52nd Edition, 2020

PUBLICATION–National Oceanic Atmospheric Administration (NOAA) – U.S. Coast Pilot 10, Pacific Coast: Oregon, Washington, Hawaii and Pacific Islands 1st Edition, 2020

Only Print-on-Demand bound copies are available for purchase; visit [nauticalcharts.noaa.gov/publications/print-agents.html#coast-pilot](http://nauticalcharts.noaa.gov/publications/print-agents.html#coast-pilot)

For any questions or comments; visit [nauticalcharts.noaa.gov/customer-service/assist/](http://nauticalcharts.noaa.gov/customer-service/assist/)

NOAA Office of Coast Survey's Nautical Publications Branch  
April 2020

LNM: 18/20

---

**ENCLOSURES**


---

**REPORT OF DELAY AT DRAWBRIDGE**

[Delay\\_Report\\_11-2017.pdf](#)

Use link above to Report a Delay at a Drawbridge.

LNM: 06/07

**SOUTHERN CALIFORNIA-CHANNEL ISLANDS HARBOR-BRIDGES**

[Channel\\_Islands\\_Bridge\\_Rehab.pdf](#)

CHANNEL ISLANDS BLVD EAST (MANDALAY BAY) & CHANNEL ISLANDS BLVD WEST (EDISON CANAL) BRIDGES-Lighting diagram for cofferdams and flexi-floats.

LNM: 06/23

**NORTHERN CALIFORNIA-DELTA & RIVERS-AMERICAN RIVER-BRIDGE**

[AmRiv\\_SiltCurtain\\_BargeLocation.pdf](#)

CAPITAL CITY HWY (ROUTE 51) BRIDGE-See link above for barge and silt curtain locations.

LNM: 22/22

**NORTHERN CALIFORNIA-SAN FRANCISCO BAY-BRIDGE**

[PlatformLighting\\_GG\\_Bridge\\_31Mar23.pdf](#)

GOLDEN GATE BRIDGE-Temporary Platform Location and Lighting revised 31 March, 2023.

LNM: 14/23

**NORTHERN CALIFORNIA-SAN FRANCISCO BAY-BRIDGE**

[R-SR\\_Bridge\\_Temp\\_Platform\\_Lighting.pdf](#)

RICHMOND-SAN RAFAEL BRIDGE- See link above for temporary underdeck platform lighting for concrete and steel repairs.

LNM: 48/21

**NORTHERN CALIFORNIA-DELTA & RIVERS-SACRAMENTO RIVER-BRIDGE**

[ButteConstructionLighting-BuoyLine.pdf](#)

REPLACEMENT BUTTE CITY BRIDGE-See link above for temporary construction trestle and lighting and proposed buoy line..

LNM: 36/22

**NORTHERN CALIFORNIA-DELTA & RIVERS-SAN JOAQUIN RIVER-BRIDGE**

[TemporaryBridge\\_FalseworkLighting.pdf](#)

CROWS LANDING REPLACEMENT-See link above for temporary falsework, temporary bridge, the temporary navigation channel during construction with navigation lighting plan.

LNM: 36/22

**NEVADA-ARIZONA-COLORADO RIVER-BRIDGE**

[RockAccessPad\\_Lighting02.pdf](#)

NEW LAUGHLIN-BULLHEAD CITY BRIDGE-See link above for temporary rock access pad and temporary bridge lighting.

LNM: 15/23

**NORTHERN CALIFORNIA-DELTA & RIVERS-OLD RIVER-BRIDGE**

[OldRiver\\_Barge\\_Lighting\\_Plan.pdf](#)

CA ROUTE 4 BRIDGE-See link above for typical barge lighting and location during rehabilitation project.

LNM: 44/22

**NORTHERN CALIFORNIA-DELTA & RIVERS-MOKELUMNE RIVER-BRIDGE**

[MokeRiverBridge\\_RehabBargeLights.pdf](#)

MOKELUMNE RIVER BRIDGE (HWY 12)-See link above for typical barge and buoy lighting and location during rehabilitation project.

LNM: 48/22

**CALIFORNIA – CALIFORNIA COAST-VOLUNTARY VESSEL SPEED REDUCTION**

[2023 NOAA USCG EPA VSR.pdf](#)

See link above.

Charts: 18640 18680 18700 18720 18740

LNM: 15/23

**NORTHERN CALIFORNIA-MONTEREY BAY-SURVEY OPERATIONS**

[MONTEREY BAY-SURVEY OPERATIONS.pdf](#)

see link above.

LNLM: 04/23

**ARIZONA/CALIFORNIA-COLORADO RIVER-BRIDGE**

[I-8\\_Trestle\\_Lighting.pdf](#)

INTERSTATE 8 BRIDGE (YUMA, AZ)-See link above for temporary trestle lighting.

LNLM: 7/23

**NORTHERN CALIFORNIA-SAN FRANCISCO BAY-BRIDGE**

[SAN FRANCISCO BAY-BRIDGE.pdf](#)

SAN FRANCISCO BAY-OAKLAND- BAY BRIDGE-typical barge location during fender repairs.

LNLM: 12/23

**SOUTHERN CALIFORNIA-SANTA BARBARA-AQUACULTURE ESTABLISHMENT**

[AQUACULTURE ESTABLISHMENT.png](#)

see link above.

LNLM: 03/23

**NORTHERN CALIFORNIA-DELTA & RIVERS-SAN JOAQUIN RIVER-BRIDGE**

[CG-PN\\_11-157b.pdf](#)

PORT OF STOCKTON RAIL BRIDGE-Select the link above for Coast Guard Public Notice (11.157b)-Notice of Availability of a Final Environmental Assessment and Finding of No Significant Impact.

LNLM: 15/23

**SOUTHERN CALIFORNIA-PORTS OF LOS ANGELES/LONG BEACH-LA/LB HARBOR-BRIDGE**

[V\\_Thomas\\_Platform\\_Lighting1.pdf](#)

See link above for platform lighting for Vincent Thomas Bridge.

LNLM: 28/19

---

THE LOCAL NOTICE TO MARINERS IS AVAILABLE ON THE WORLD WIDE WEB AT [HTTPS://WWW.NAVCEN.USCG.GOV](https://www.navcen.uscg.gov)

T. L. Conner, CDR  
U.S. Coast Guard  
Acting Chief Waterways Management Branch

**U.S. COAST GUARD  
REPORT OF DELAY AT DRAWBRIDGE  
PER 33 CFR 117.5**

BRIDGE NAME: \_\_\_\_\_ DATE: \_\_\_\_\_

MILE : \_\_\_\_\_ WATERWAY: \_\_\_\_\_

1. Name/ Type of Vessel: \_\_\_\_\_ Direction of Travel : \_\_\_\_\_

2. Vessel Owner (Name): \_\_\_\_\_

(Address): \_\_\_\_\_

3. Name of Pilot (if applicable): \_\_\_\_\_

(Address): \_\_\_\_\_

4. Time vessel signaled for bridge opening: \_\_\_\_\_

5. Location of vessel when signal was given: \_\_\_\_\_

6. Time and location of vessel when delay began: \_\_\_\_\_

7. Method of signal for bridge opening: ( ) Radio ( ) Sound ( ) Visual.

(If sound or visual signal was used, specify: \_\_\_\_\_)

8. Time bridge operator acknowledged signal: \_\_\_\_\_

9. Method of bridge operator acknowledgement: ( ) Radio ( ) Sound ( ) Visual

(If sound or visual signal was used, specify: \_\_\_\_\_)

10. Did bridge operator acknowledgement indicate the bridge,

( ) Could be opened immediately?

( ) Could not be opened immediately?

11. If land traffic crossed the bridge:

Time land traffic started across the bridge \_\_\_\_\_

Time land traffic stopped crossing the bridge \_\_\_\_\_

Did land traffic stop on the bridge? \_\_\_\_\_

Duration land traffic stopped on the bridge \_\_\_\_\_

12. Time drawbridge opened for navigation \_\_\_\_\_

13. Additional comments:

\_\_\_\_\_  
\_\_\_\_\_  
\_\_\_\_\_

I certify the above information is true to the best of my knowledge and understand this statement may be used by the U.S. Coast Guard in levying fines against the bridge owner.

Signature \_\_\_\_\_

Telephone \_\_\_\_\_

Mariners may complete and return to:

Commander (dpw)

Fax: (510) 437-5836

Email: [Carl.T.Hausner@uscg.mil](mailto:Carl.T.Hausner@uscg.mil)

Eleventh Coast Guard District

Coast Guard Island, Building 50-2

Alameda, CA 94501-5100

Attn: Bridge Office

Questions? Please contact: Carl Hausner, Bridge Administrator, Eleventh Coast Guard District

Office: (510) 437-3516

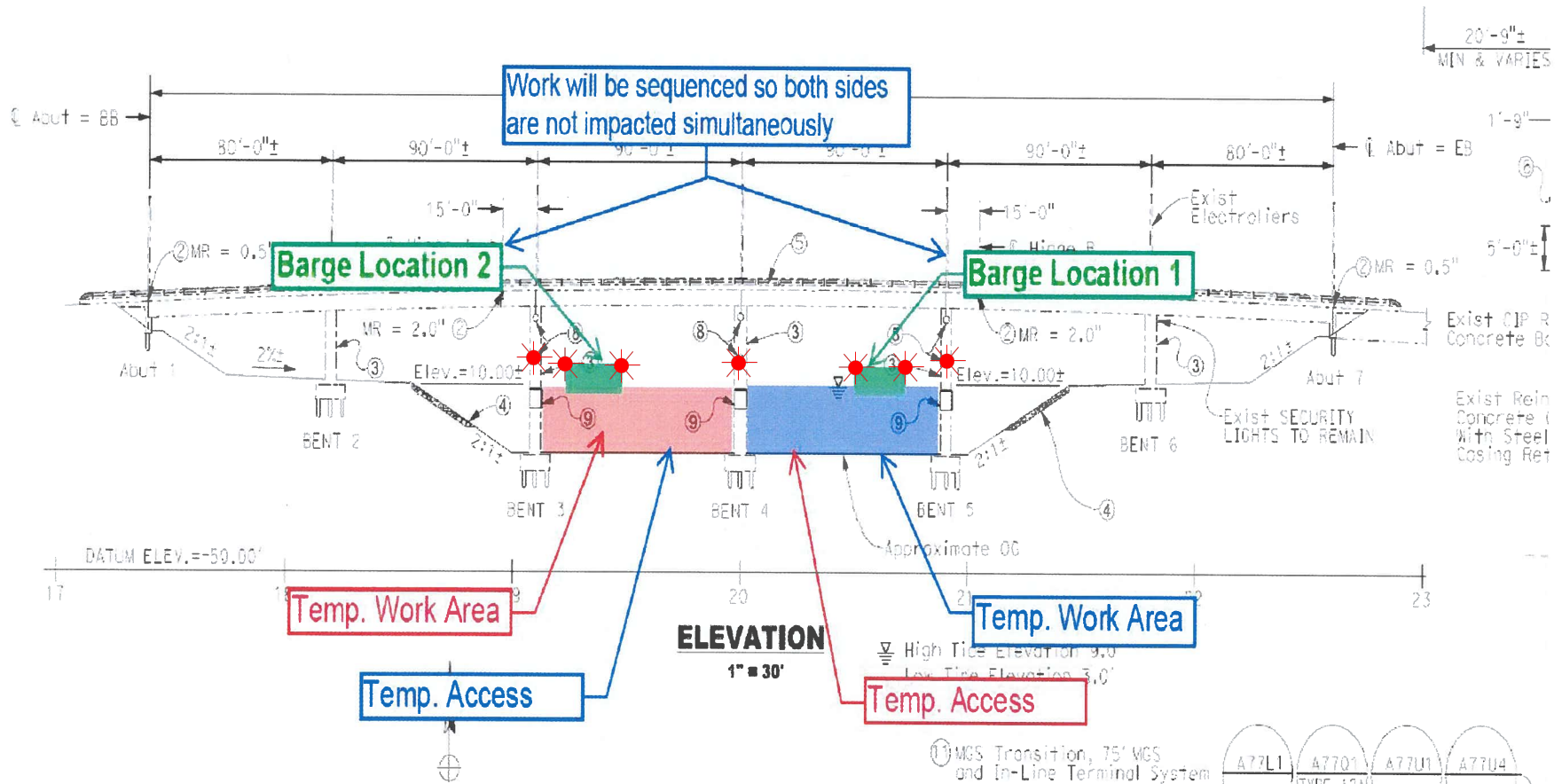
Cell: (510) 219-4366

Mariners are reminded not to require bridge openings for appurtenances nonessential to navigation, per 33 CFR 117.11



# Rehabilitation of the Channel Islands Blvd West Bridge (Edison Canal) over Channel Islands Harbor

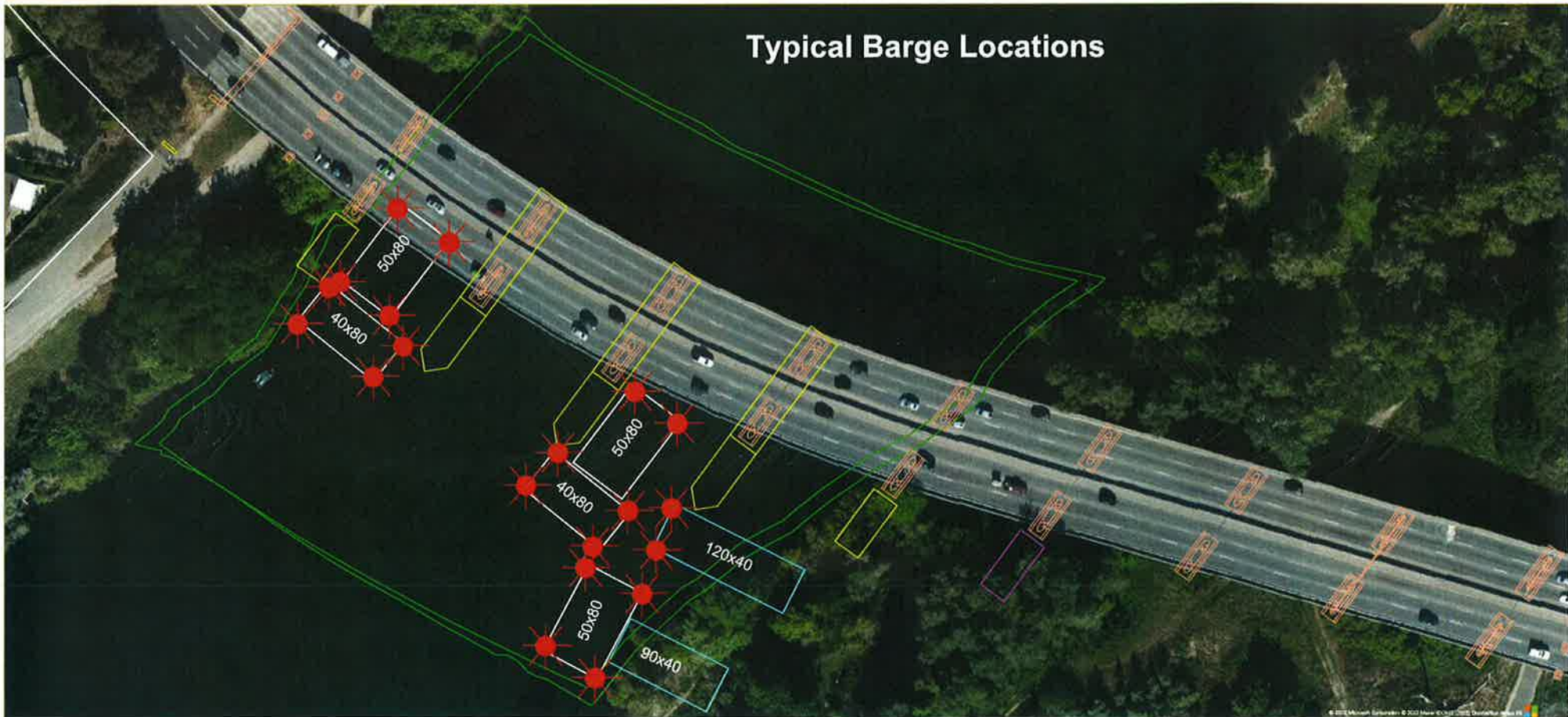
## Flexi-Float and Cofferdam Lighting



The upstream and downstream ends of the temporary cofferdams and each corner of each flexi-float barge shall be lighted at night with steady burning red lights visible at 2,000 yards by approaching vessels. Only one span will be worked on at any one time, leaving the other span available for mariners.

Rehabilitation and Modification Project  
Capital City (CA Route 51) Bridge, Mile 4.0, American River

Typical Barge Location and Typical Barge Lighting



Each corner of each barge is lighted at night with steady burning all-round red light, visible at 2,000 by approaching vessels. All vessels transiting the project area should use extreme caution. Turbidity curtains will be placed at different locations during the project. The next four diagrams show the proposed location of the curtains.



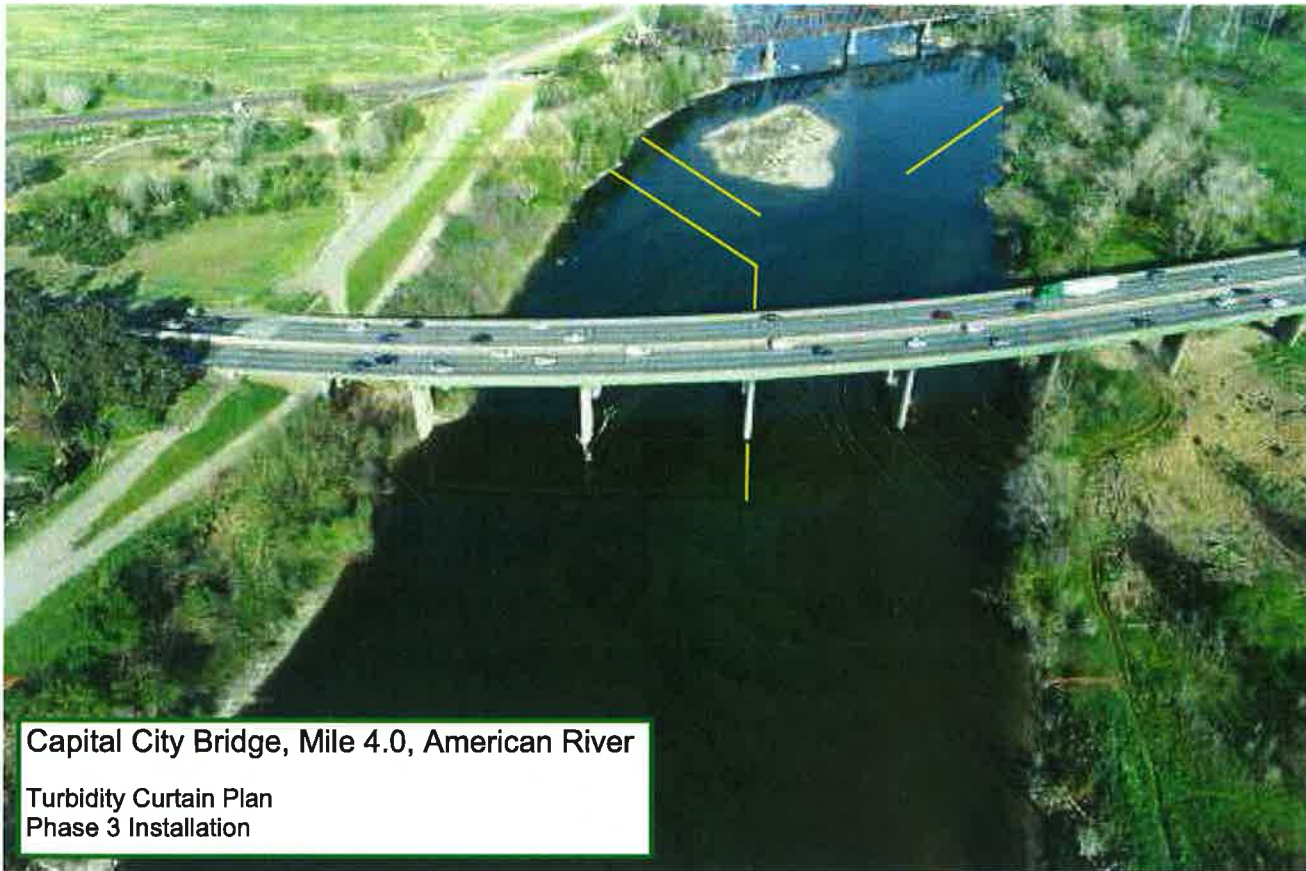
Capital City Bridge, Mile 4.0, American River

Turbidity Curtain Plan  
Phase 1 Installation



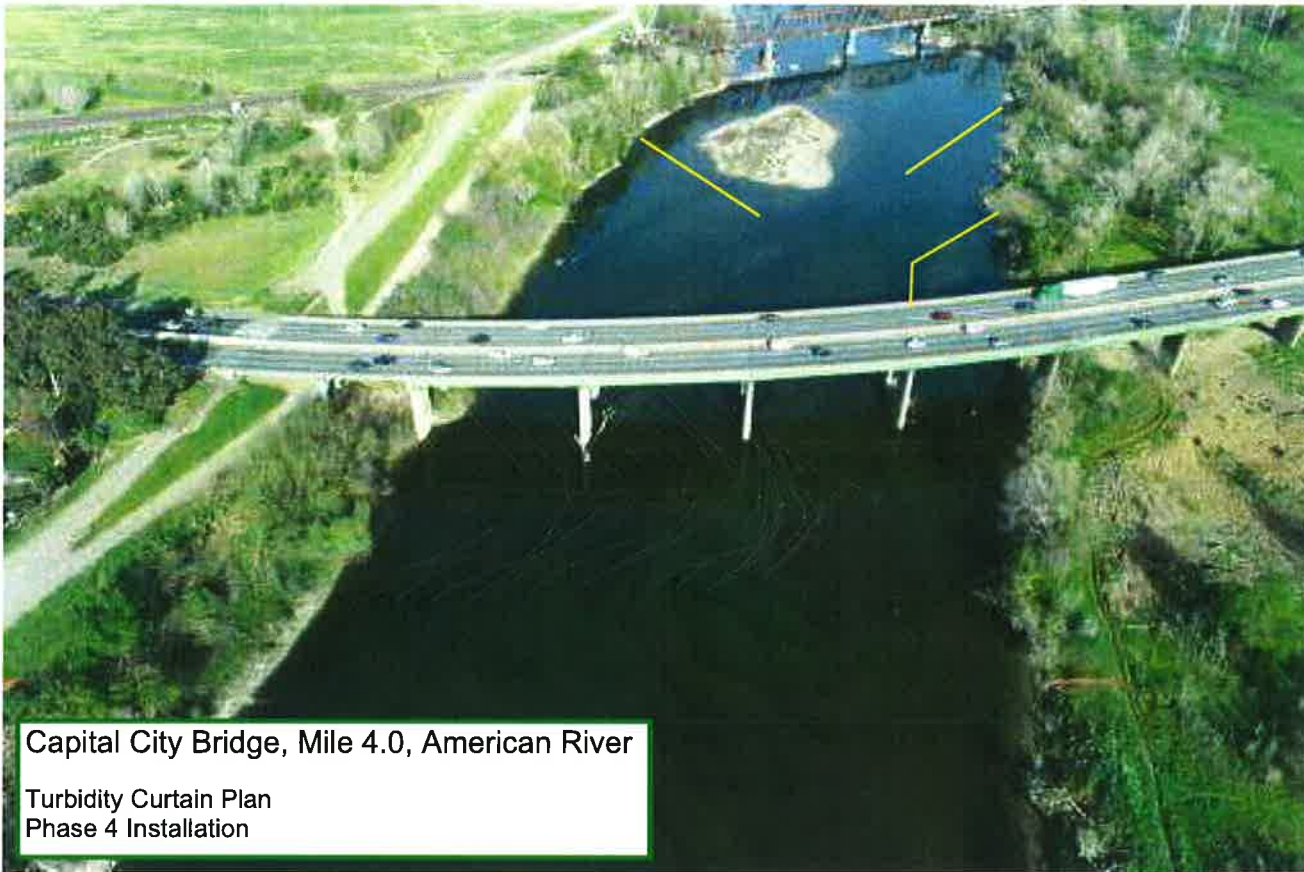
Capital City Bridge, Mile 4.0, American River

Turbidity Curtain Plan  
Phase 2 Installation



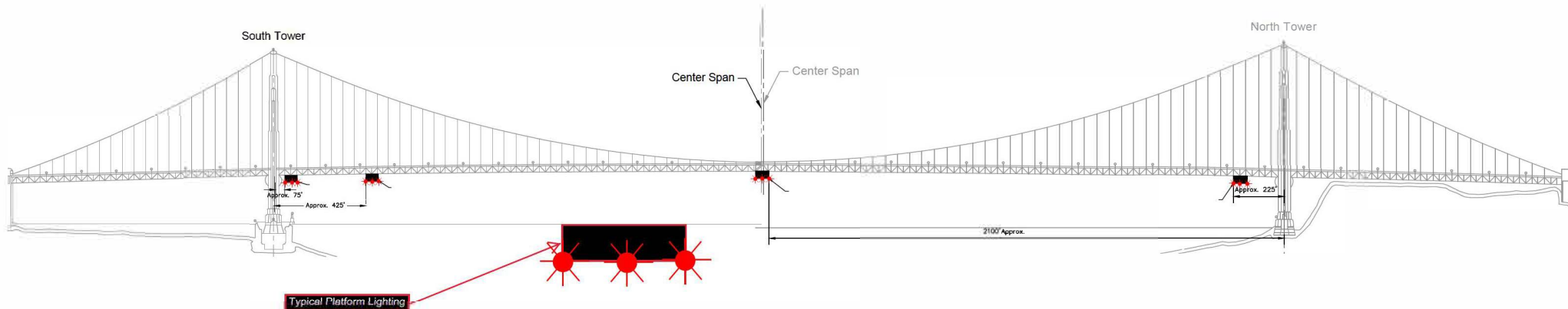
Capital City Bridge, Mile 4.0, American River

Turbidity Curtain Plan  
Phase 3 Installation



Capital City Bridge, Mile 4.0, American River  
Turbidity Curtain Plan  
Phase 4 Installation

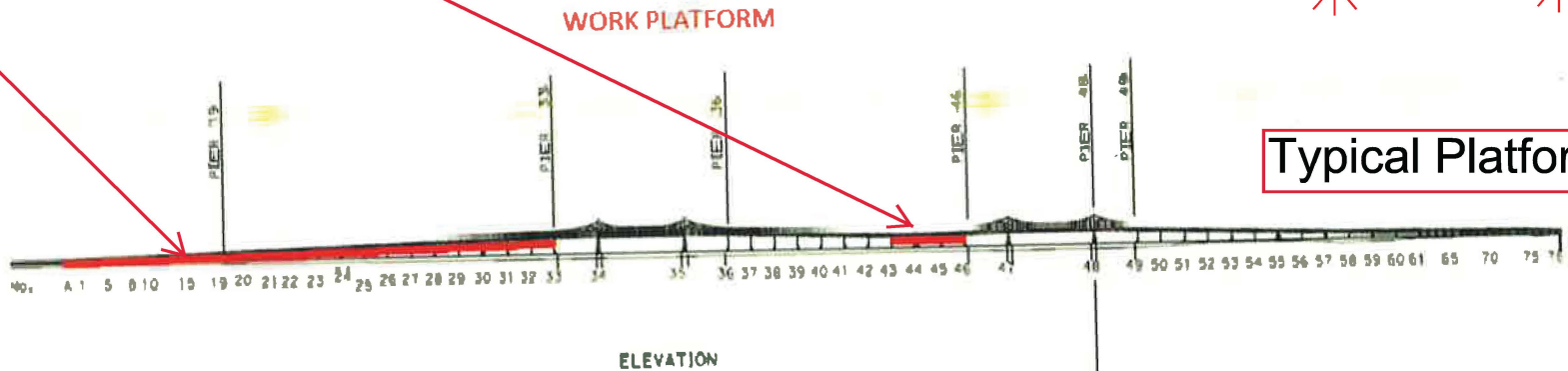
**Temporary Access Platforms**  
**Golden Gate Bridge, mile 2.5, San Francisco Bay**  
**Revised 31 Mar 23**



Four 54 ft wide temporary platforms are installed in the main span below low steel of the bridge, in relation to centerline of the span; two south of the north tower and two north of the south tower, reducing vertical clearance by no more than 14 feet. The upstream and downstream lower edges of the temporary platforms will be lighted at night with steady burning red lights visible at 2,000 yards by approaching vessels.

Painting and Structural Repairs Project  
Richmond-San Rafael Bridge  
Mile 13.0, San Francisco Bay

Temporary Underdeck Platforms

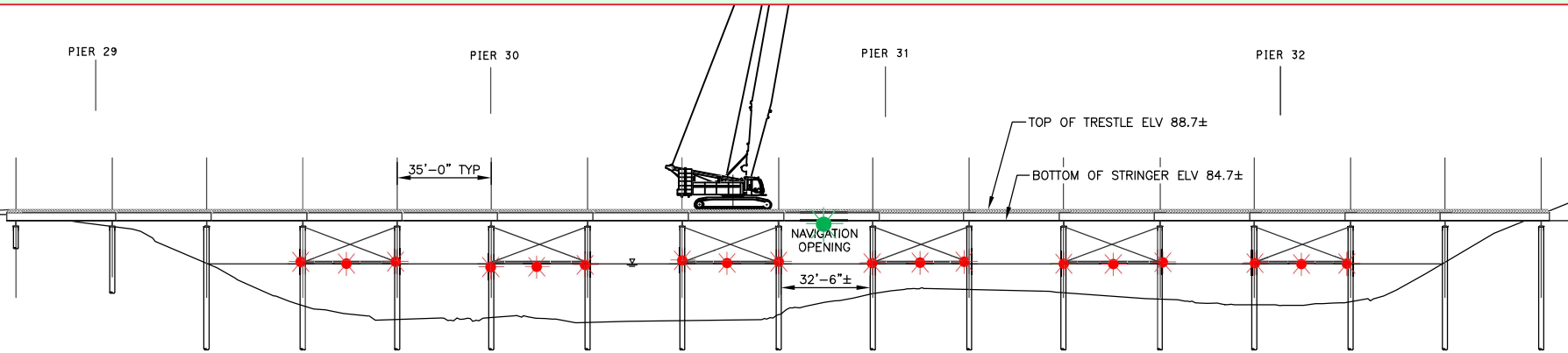


Typical Platform Lighting


The upstream and downstream lower edges of each temporary platform in each span are lighted at night with steady burning red lights to be seen at 2,000 yards by approaching vessels. Each platform reduces vertical clearance by no more than 3 feet.



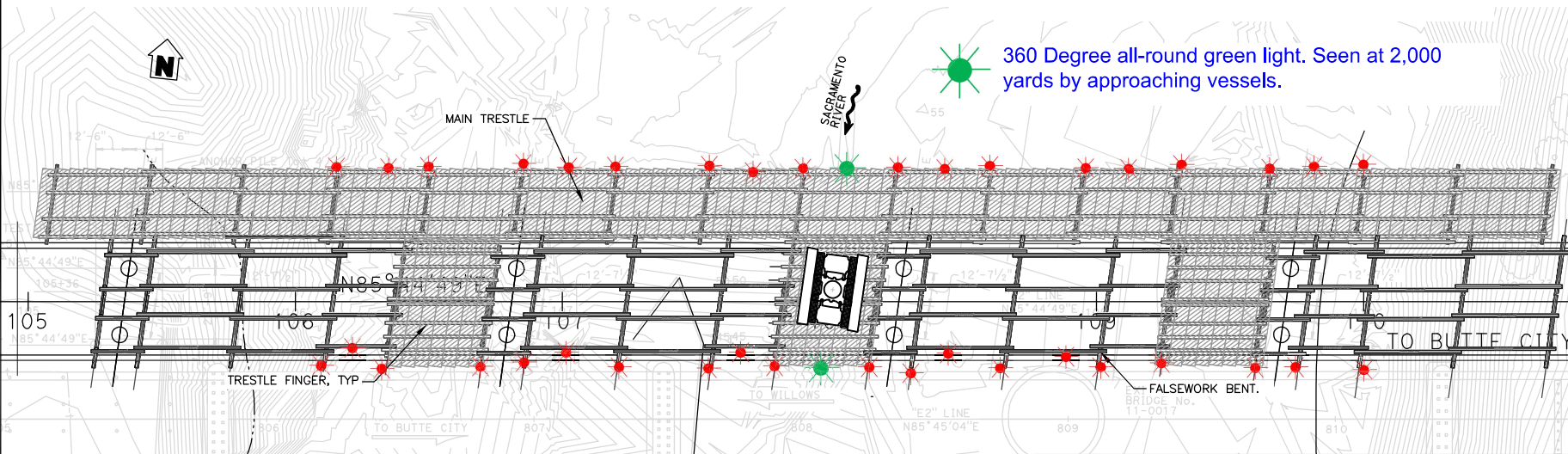
# Butte City Bridge Replacement Project Sacramento River



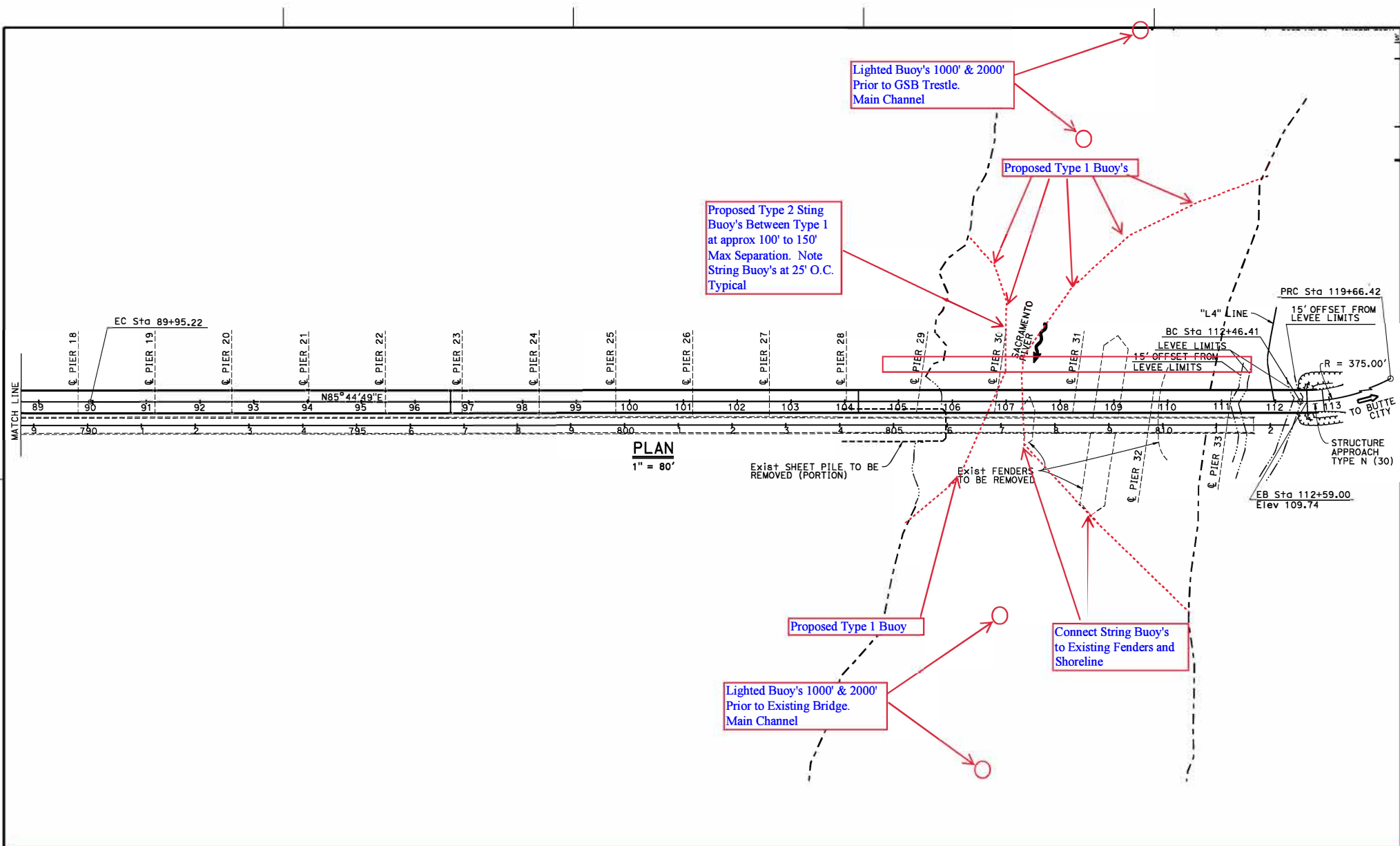
MAIN TRESTLE PROFILE  
SCALE: 1:40

 360 Degree all-round red light. Seen at 2,000 yards by approaching vessels.

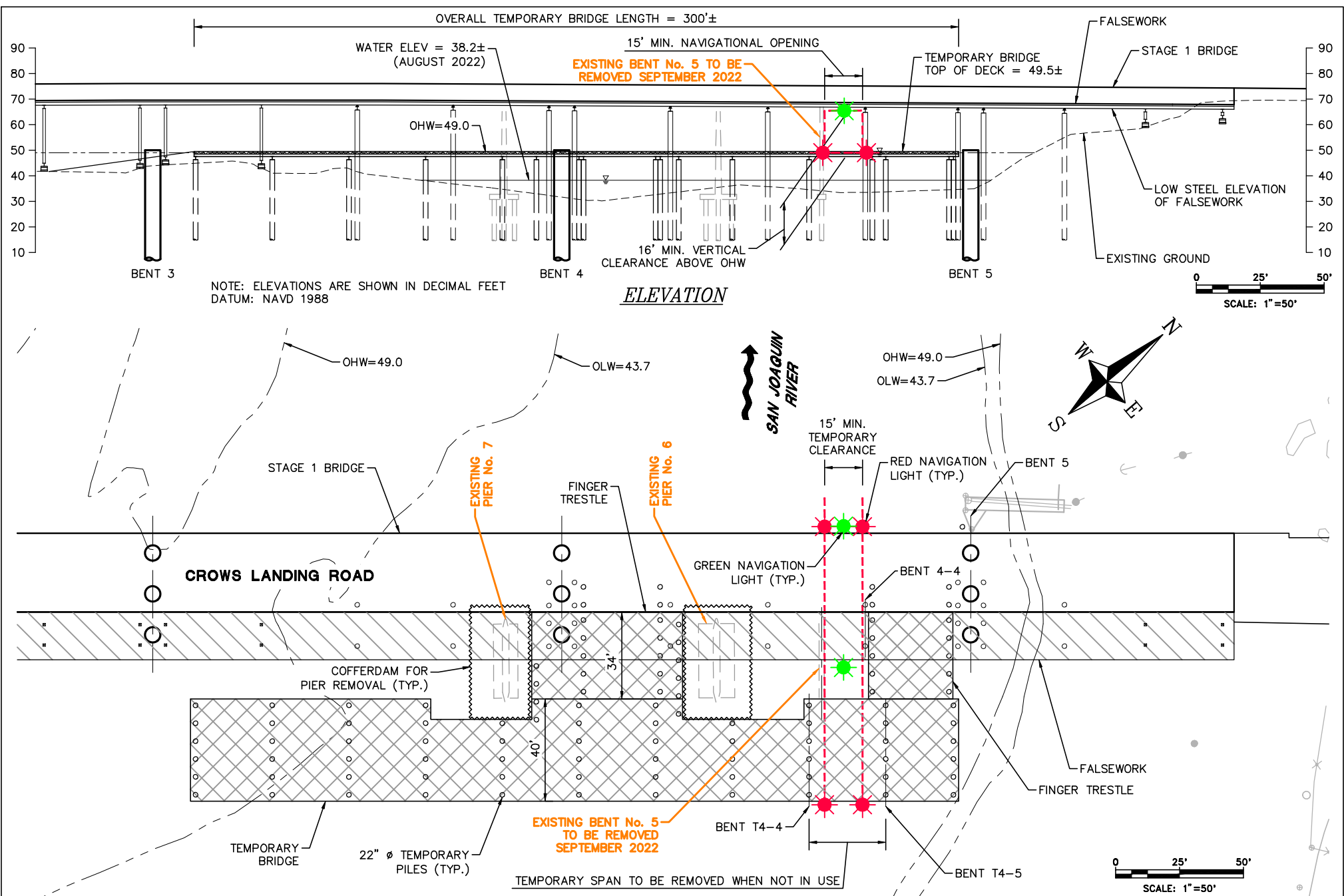
 360 Degree all-round green light. Seen at 2,000 yards by approaching vessels.



The upriver and downriver ends of the trestle piles and crossbeams are lighted at night with steady burning red lights. The upriver and downriver low steel of the temporary navigation span, in the center of the river, is lighted at night with steady burning green lights, which identifies the center of the temporary navigation span.



**Butte City Bridge Replacement Project, mile 169.7, Sacramento River  
Proposed Buoy Line During Construction**



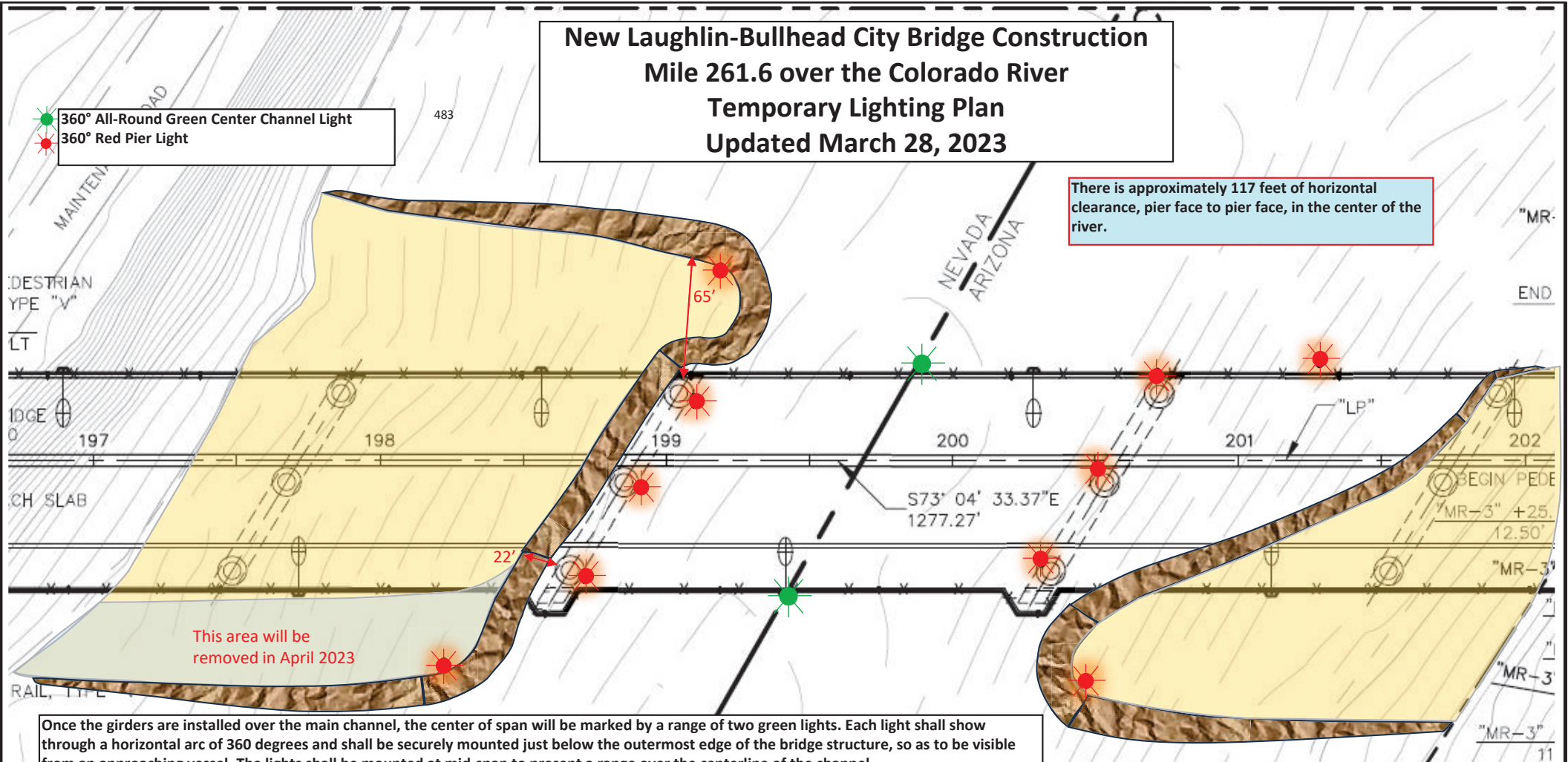
**Temporary Navigation Lighting-Crows Landing Bridge Replacement Project - San Joaquin River**

The temporary bridge, the replacement bridge and existing bridge will be lighted at night with two red lights marking the temporary navigation channel. The temporary falsework will be lighted, upriver and downriver, with green lights marking the center of the temporary navigation channel. During construction the temporary navigation channel will provide a horizontal clearance of 15 feet and a vertical clearance at Ordinary High Water of 16 feet.

# New Laughlin-Bullhead City Bridge Construction Mile 261.6 over the Colorado River Temporary Lighting Plan Updated March 28, 2023

● 360° All-Round Green Center Channel Light  
● 360° Red Pier Light

There is approximately 117 feet of horizontal clearance, pier face to pier face, in the center of the river.



This area will be removed in April 2023

Once the girders are installed over the main channel, the center of span will be marked by a range of two green lights. Each light shall show through a horizontal arc of 360 degrees and shall be securely mounted just below the outermost edge of the bridge structure, so as to be visible from an approaching vessel. The lights shall be mounted at mid-span to present a range over the centerline of the channel.

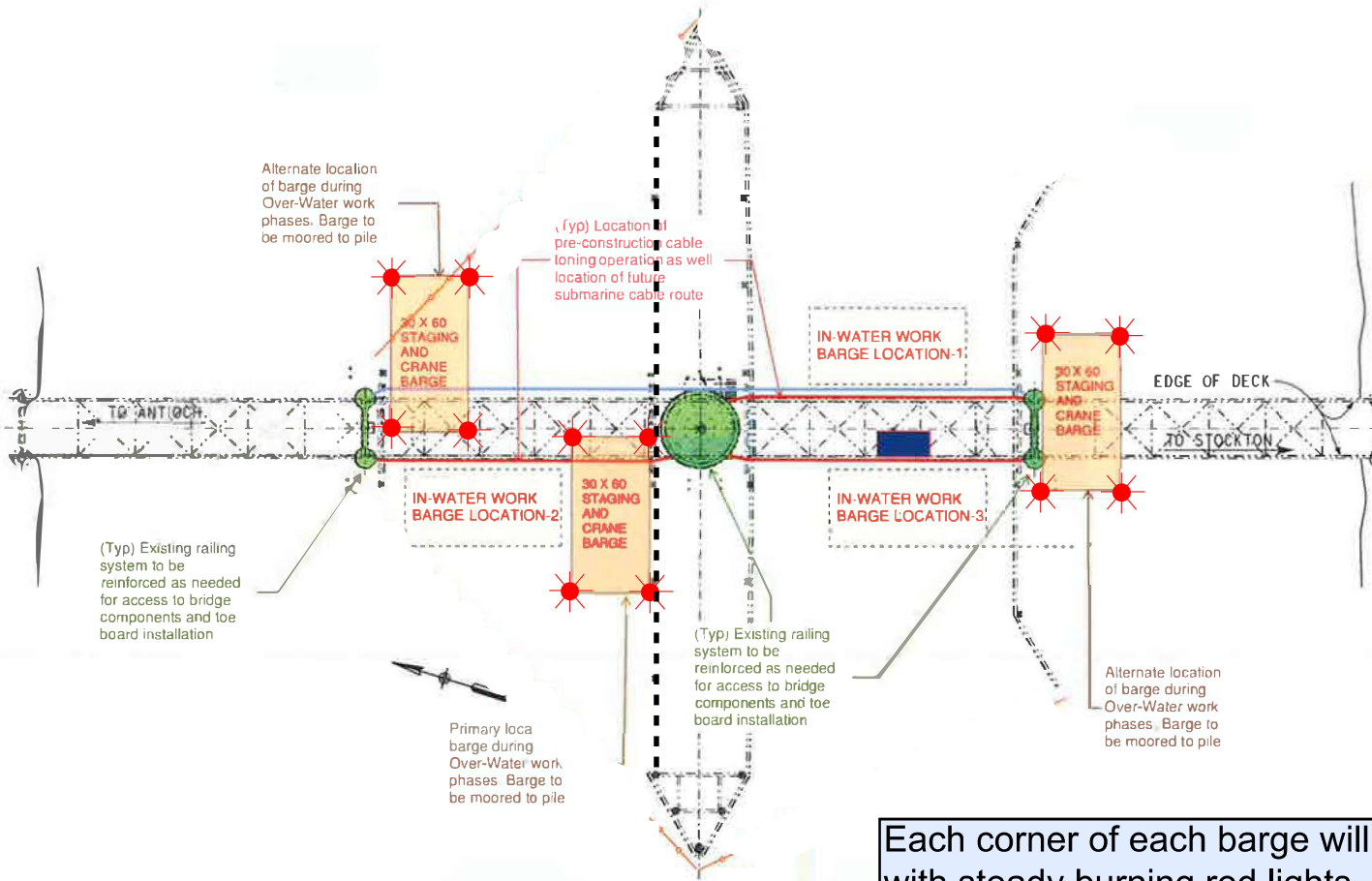
The exposed piers, as shown above, will be lit at night with steady burning red lights, visible at 2,000 yards by approaching vessels. The upriver and downriver in-ward tip of the Nevada side access pad and the downriver in-ward tip of the Arizona side access pad will be lit at night with steady burning red lights, visible at 2,000 yards by approaching vessels. A fourth red light will be installed on the northeast side of the river to mark the area to keep vessels out.

LAUGHLIN BRIDGE OVER COLORADO RIVER

ACCESS PAD MODIFICATIONS

By Greg Gentsch, P.E. March 28, 2023

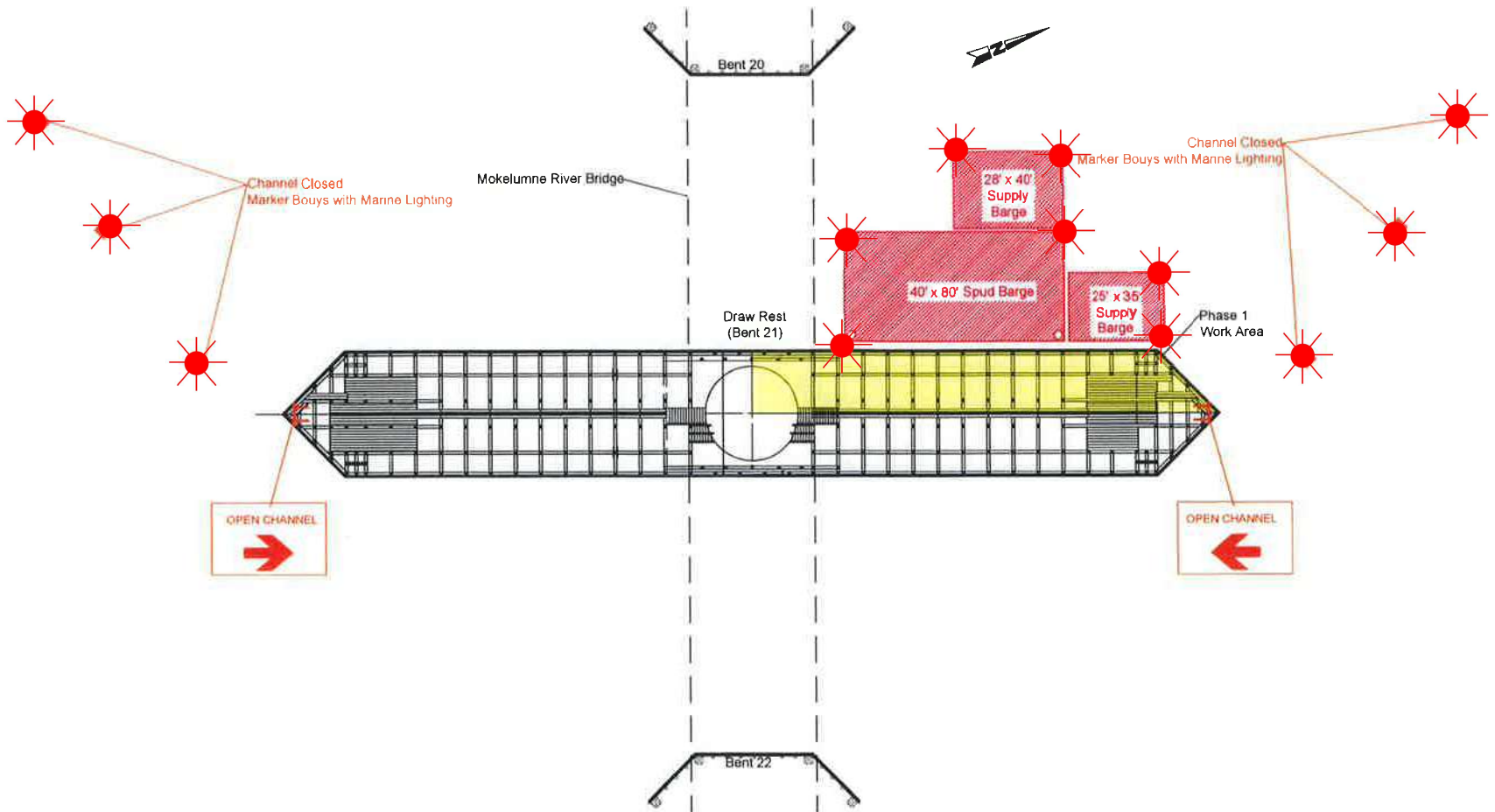
# Barge Lighting Plan Highway 4 Drawbridge Mile 14.8, Old River



Each corner of each barge will be lighted at night with steady burning red lights, visible at 2,000 yards from approaching vessels.

# Rehabilitation CA Route 12 Bridge, Mile 3.0, Mokelumne River

## Typical Barge Lighting Diagram



Each corner of each barge is lighted with fixed red lights visible at 2,000 yards by approaching vessels. The barge configuration and bouy locations will change areas throughout the project.



To: All Mariners

April 10, 2023

The National Oceanic and Atmospheric Administration (NOAA), with support from the United States Coast Guard (USCG) and Environmental Protection Agency (EPA) is issuing a voluntary 10-knot Vessel Speed Reduction (VSR) request that goes into effect May 1 off of San Francisco, Monterey, and southern California; please see the attached charts. Large ships traveling at 10 knots or less give whales more time to move to avoid a strike, reduce the lethality of a strike should one occur, generate less harmful ocean noise and fewer air emissions. Thus, the goals of these voluntary VSR zones are to reduce the risk of fatal ship strikes to endangered blue, fin, and humpback whales, reduce ocean noise, and protect public health along the California coast. These whale species are protected under the Federal Endangered Species Act (16 U.S.C. 1538 et seq.), the Marine Mammal Protection Act (16 U.S.C. 1361 et seq.), and the National Marine Sanctuaries Act (16 U.S.C. 1431 et seq.). Any unauthorized take of whales, even if unintentional, by vessels transiting in U.S. waters violates federal statutes.

**The voluntary VSR requests will be in effect May 1 to December 15, 2023 for all VSR zones off California, as shown in the attached charts.** Note the expansion of the northern VSR zone throughout Monterey Bay National Marine Sanctuary, and the southern California VSR zone expansion to include recent International Maritime Organization modifications to the Santa Barbara Channel Traffic Separation Scheme (TSS) and Area To Be Avoided (ATBA). NOAA, USCG, and EPA request that all vessels 300 gross tons (GT) or larger reduce speeds to 10 knots when transiting within the designated VSR zones and prioritize use of the western traffic lane of the San Francisco TSS when traveling in the San Francisco Offshore TSS. Vessels may deviate from the speed and routing recommendations whenever necessary to maintain safe maneuvering.

We request your cooperation with the voluntary VSR requests to protect the health of coastal communities and whales that annually migrate to and through these zones to feed. All transits by vessels 300 GT or larger are analyzed by NOAA via Automatic Information System (AIS) data provided by USCG to assess the cooperation of your company along with industry as a whole.

NOAA, USCG, and EPA are committed to the long-term protection of nationally significant marine resources and public health by enhancing marine safety and environmental awareness in the maritime community. If you have questions, please contact Sean Hastings, 805-705-1790, [sean.hastings@noaa.gov](mailto:sean.hastings@noaa.gov).

NOAA, USCG, and EPA commend your commitment to protecting endangered and threatened whales and protecting public health by cooperation with the 10 knot VSR requests and working towards a goal of 100% cooperation in 2023.

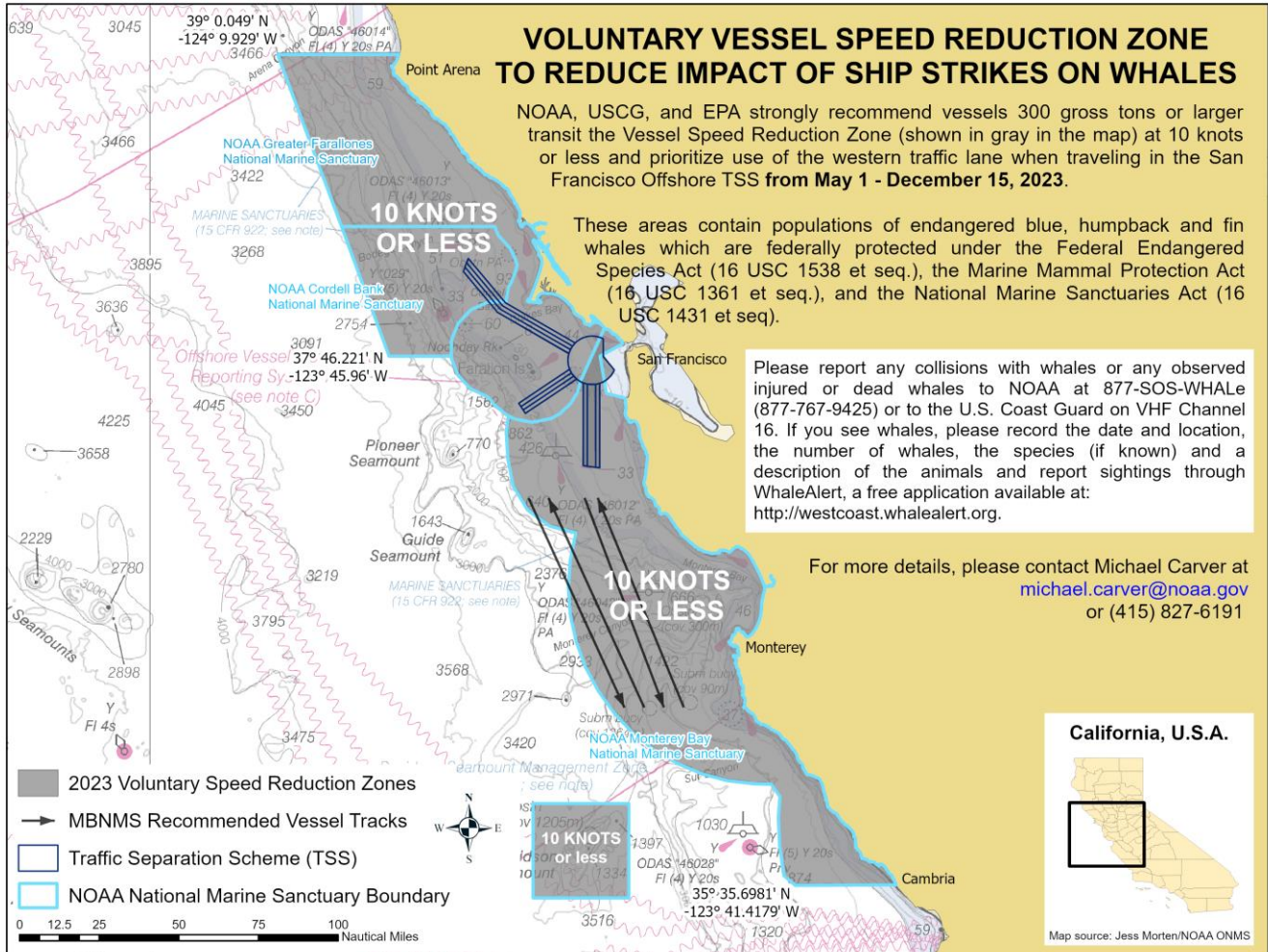
William J. Douros, Regional Director  
NOAA Office of National Marine Sanctuaries  
West Coast Region

Scott M. Rumsey, Acting Regional Administrator  
NOAA National Marine Fisheries Service  
West Coast Region

Andrew M. Sugimoto, Rear Admiral  
U.S. Coast Guard  
District Eleven

Kerry Drake, Acting Regional Administrator  
Environmental Protection Agency  
Region 9

## 2023 Voluntary Vessel Speed Reduction Zones – San Francisco and Monterey Bay Region



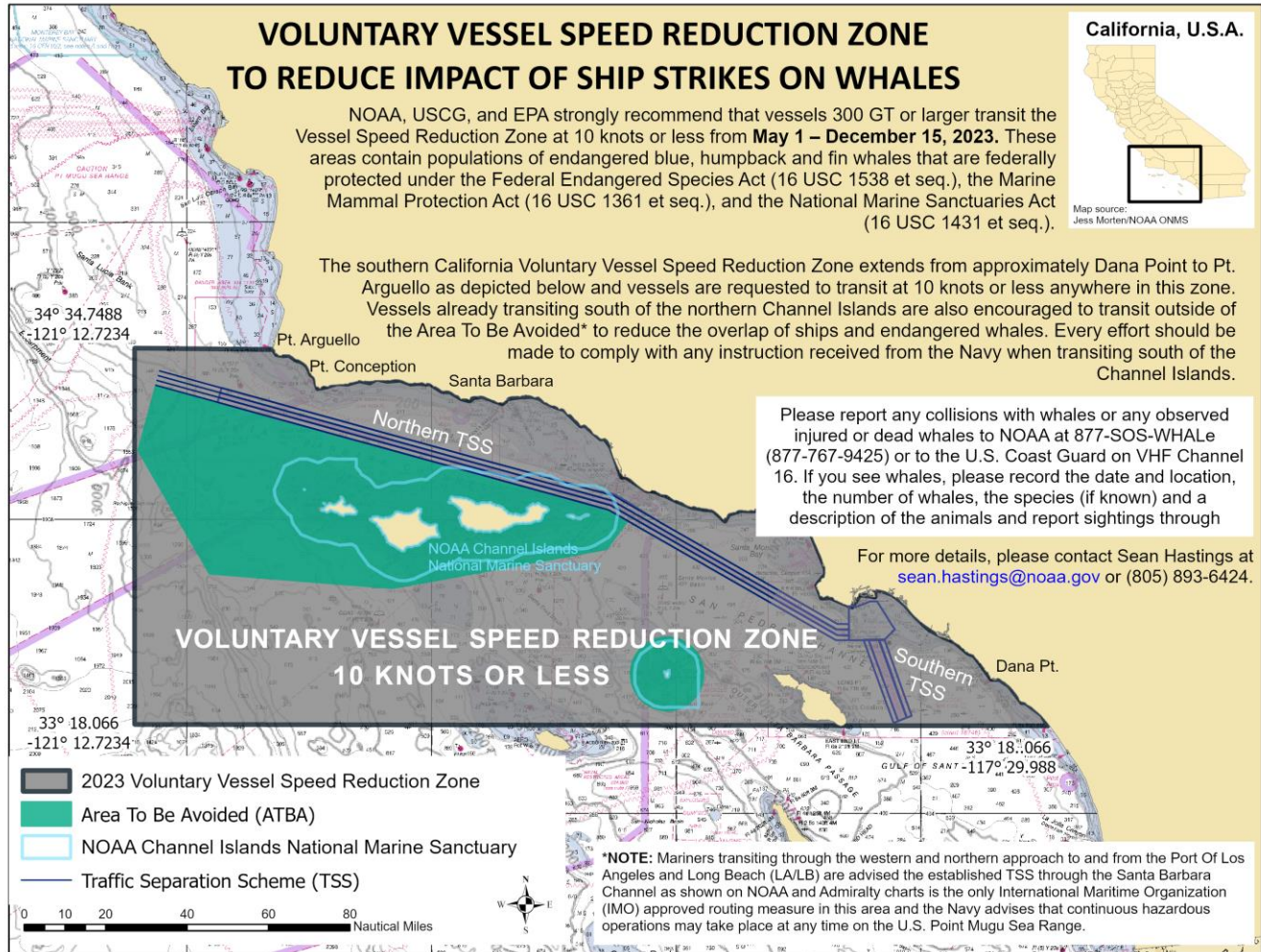
NOAA Chart 501

This map is not to be used for navigational purposes

27 MARCH 2023



## 2023 Voluntary Vessel Speed Reduction Zone – Southern California Region



NOAA Chart 18022

Chart not for navigational purposes.

27 MARCH 2023



## RESEARCH EQUIPMENT IN WATER

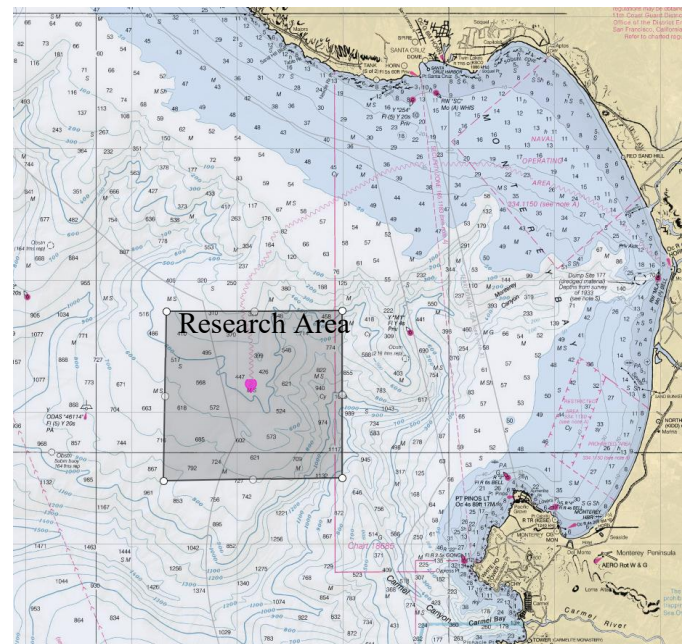
Monterey Bay  
February 2023

SAILDRONE, INC. will operate an Unmanned Surface Vehicle called Saildrone conducting research in the Monterey Bay in the vicinity of position of 36° 42.7'N, 122° 11.2'W

**VESSELS ARE REQUESTED TO TRANSIT THE AREA WITH CAUTION, AND REMAIN GREATER THAN 500 METERS AWAY FROM THE RESEARCH EQUIPMENT.**

Saildrones are wind powered Unmanned Surface Vehicles that carry important oceanographic and fisheries acoustics research instrumentation and are controlled from shore through satellite communications.

- **Color: Orange**
- **Light: white all-round light**
- **Radar Reflector: Yes**
- **Notation: "Saildrone"**
- **Length: 23 ft & Width: 2 ft**
- **Height: 16 ft above water line**
- **Draft: 6 ft, Avg. speed: 3 kts**
- **GPS / AIS / Cameras: Yes**



SAILDRONE MISSION CONTROL

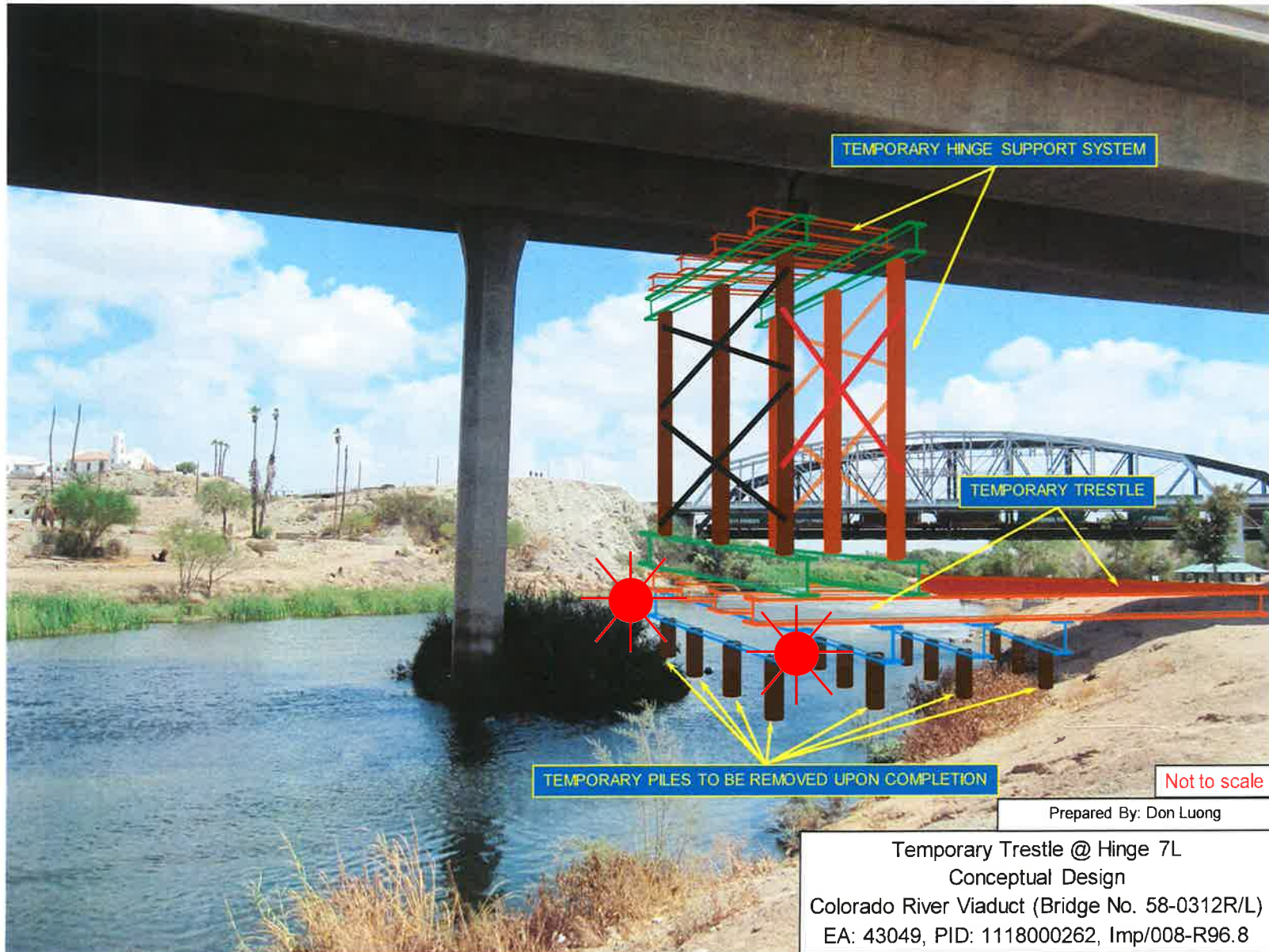
(510) 722-6070

[missioncontrol@saildrone.com](mailto:missioncontrol@saildrone.com)

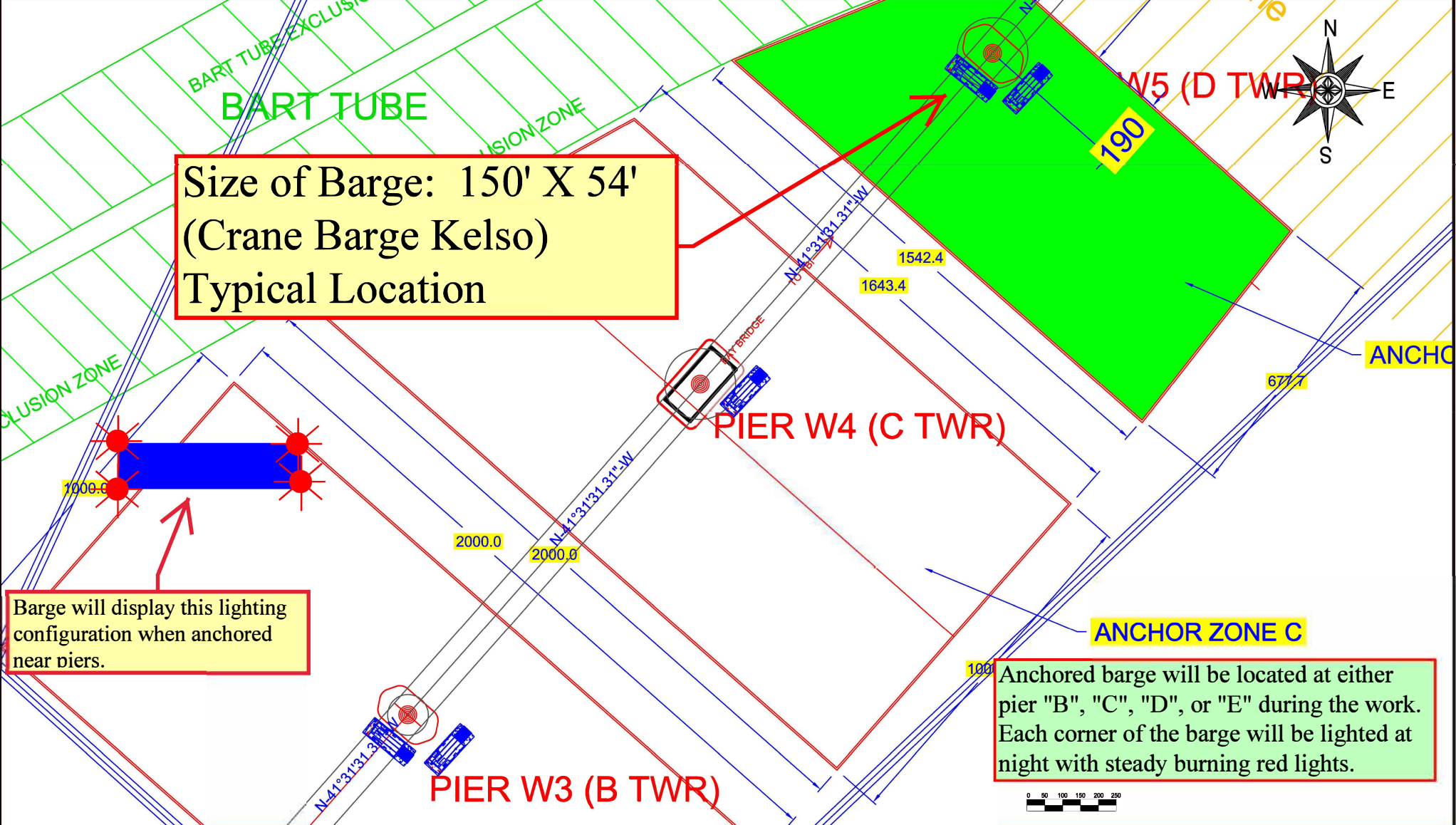
# Bridge Repairs

## Interstate 8 Bridge, mile 30.4, Colorado River

### Temporary Trestle/Falsework Lighting



Each channel ward corner of the temporary trestle/falsework is lighted at night with steady burning red lights visible at 1,000 yards by approaching vessels.



**Size of Barge: 150' X 54'**  
**(Crane Barge Kelso)**  
**Typical Location**

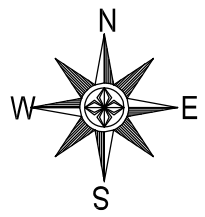
Barge will display this lighting configuration when anchored near piers.

Anchored barge will be located at either pier "B", "C", "D", or "E" during the work. Each corner of the barge will be lighted at night with steady burning red lights.

**Fender Repairs**

**Western Span San Francisco Oakland Bay Bridge, mile 8.9, San Francisco Bay**  
**Temporary Impacts to Navigation Diagram**

Anchored barge will be located at either pier "B", "C", "D", or "E" during the work. Each corner of the barge will be lighted at night with steady burning red lights.



Size of Barge: 150' X 54'  
(Crane Barge Kelso)  
Typical Location

Shipping Lane

ANCHOR ZONE E WEST

ANCHOR ZONE E EAST

PIER W6 (E TWR)

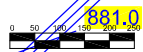
Barge will display this lighting configuration when anchored near piers.

BART TUBE EXCLUSION ZONE

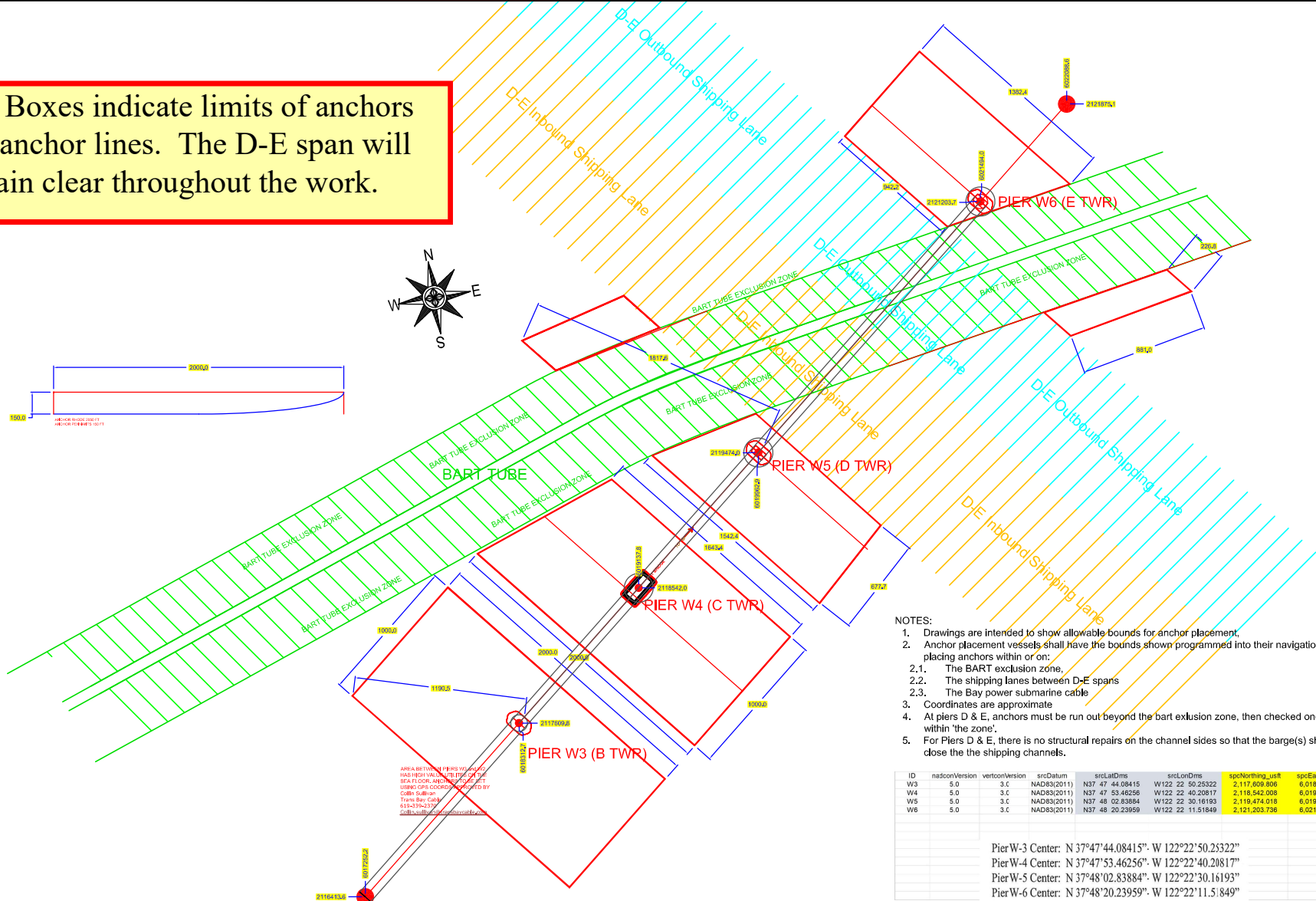
BART TUBE EXCLUSION ZONE

D-E Outbound Shipping Lane

D-E Inbound Shipping Lane



Red Boxes indicate limits of anchors and anchor lines. The D-E span will remain clear throughout the work.



AREA BETWEEN PIERS W4 AND W5 HAS BEEN DESIGNATED AS A SEA FLOOR ANCHORAGE RESTRICTION ZONE (SARZ) AND IS CONTROLLED BY COLTS SULLIVAN  
 Trans Bay Cable  
 45347363.77  
 2016011616.0

**NOTES:**

1. Drawings are intended to show allowable bounds for anchor placement.
2. Anchor placement vessels shall have the bounds shown programmed into their navigation systems in order to avoid placing anchors within or on:
  - 2.1. The BART exclusion zone,
  - 2.2. The shipping lanes between D-E spans
  - 2.3. The Bay power submarine cable
3. Coordinates are approximate
4. At piers D & E, anchors must be run out beyond the bart exclusion zone, then checked once set to ensure that they are not within 'the zone'.
5. For Piers D & E, there is no structural repairs on the channel sides so that the barge(s) should never need to moored close the the shipping channels.

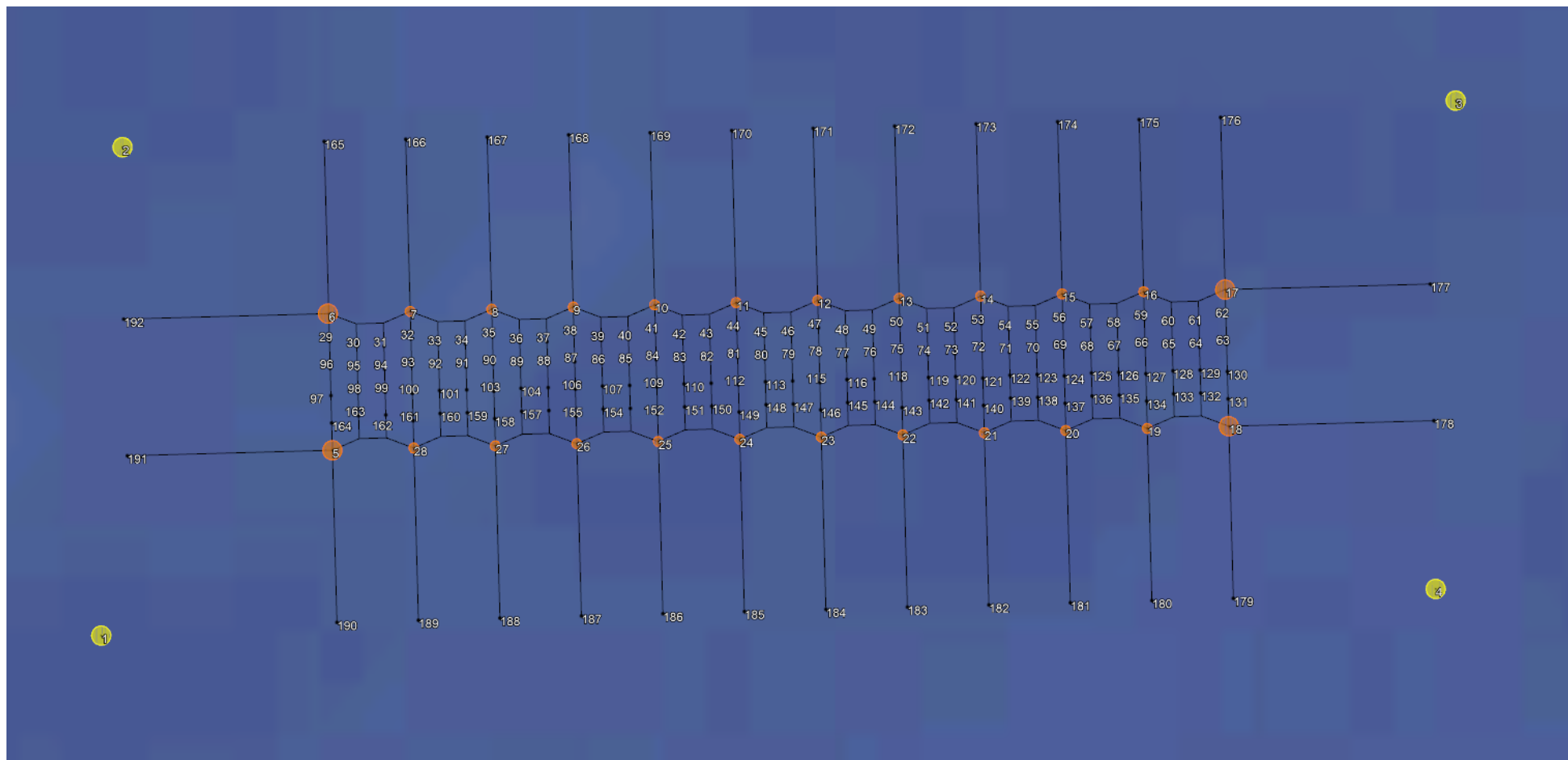
ID	nadsOnVersion	vertconVersion	srcDatum	srcLatOrms	srcLonOrms	srcNorthing_usr1	srcEasting_usr1
W3	5.0	3.C	NAD83(2011)	N37 47 44.08415	W122 22 50.25322	2,117,609,808	6,018,512,651
W4	5.0	3.C	NAD83(2011)	N37 47 53.46256	W122 22 30.20817	2,116,542,008	6,019,137,752
W5	5.0	3.C	NAD83(2011)	N37 48 02.83884	W122 22 30.16193	2,119,474,018	6,019,962,888
W6	5.0	3.C	NAD83(2011)	N37 48 20.23959	W122 22 11.51848	2,121,203,736	6,021,493,997

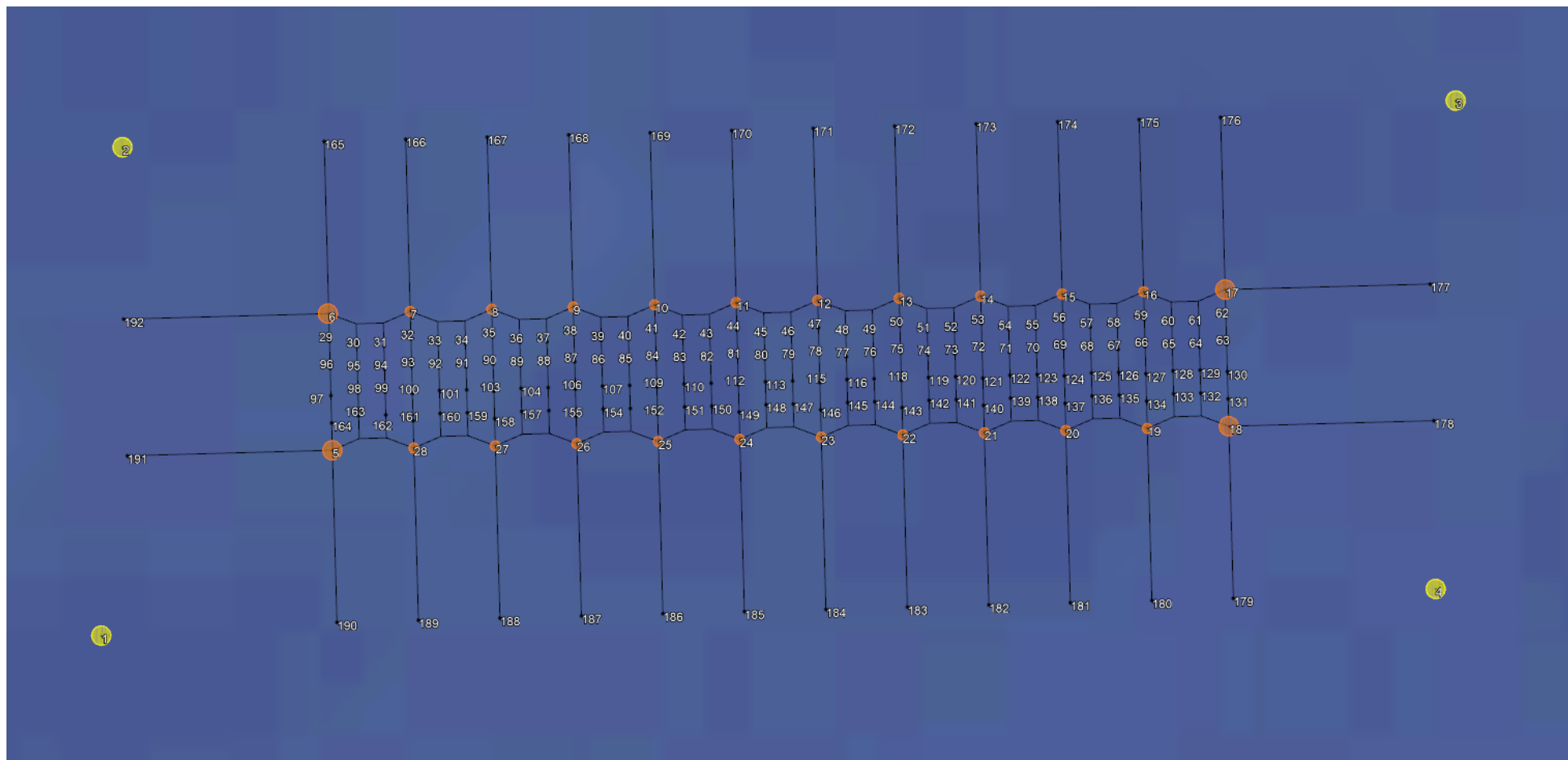
Pier-W-3 Center: N 37°47'44.08415". W 122°22'50.25322"  
 Pier-W-4 Center: N 37°47'53.46256". W 122°22'40.20817"  
 Pier-W-5 Center: N 37°48'02.83884". W 122°22'30.16193"  
 Pier-W-6 Center: N 37°48'20.23959". W 122°22'11.51849"

## Fender Repairs

### Western Span San Francisco Oakland Bay Bridge, mile 8.9, San Francisco Bay

### Temporary Impacts to Navigation Diagram







U.S. Department of  
Homeland Security

United States  
Coast Guard



Commander  
Eleventh Coast Guard District

U.S. Coast Guard Island, Bldg 50-2  
Alameda, CA 94501-5100  
Staff Symbol: dpw  
Phone: (510) 437-3516  
Fax: (510) 437-5836  
Email: [Carl.T.Hausner@uscg.mil](mailto:Carl.T.Hausner@uscg.mil)

April 17, 2023

## PUBLIC NOTICE (11-157b)

### NOTICE OF AVAILABILITY OF FINAL ENVIRONMENTAL ASSESSMENT AND FINDING OF NO SIGNIFICANT IMPACT

**Description:** All interested parties are notified that the U.S. Coast Guard (USCG) announces the availability of a Final Environmental Assessment (FEA) and a Finding of No Significant Impact (FONSI) for the proposed Port of Stockton rail bridge replacement and rail improvements project, at the Port of Stockton, San Joaquin County, California.

**Statutory Authority:** This notice is being issued to all interested parties in accordance with Environmental Planning Policy, COMDTINST 5090.1 (series), the National Environmental Policy Act of 1969 (42 U.S.C. §§ 4321 to 4370h) and the Council on Environmental Quality Regulations dated 28 November 1978 (40 C.F.R. §§ 1500–1508).

**Proposed Action:** The Project includes replacing the rail bridge over the San Joaquin River and constructing a new lead track. As a transportation structure built over navigable waterways of the United States, the proposed replacement bridge will require a Coast Guard Bridge Permit.

**Public Review:** The USCG is the lead federal agency for this project and, as such, responsible for the review of its potential effects on the human environment, including historic properties and tribal impacts, pursuant to National Environmental Policy Act (NEPA) and the National Historic Preservation Act. The USCG, therefore, is required by law to ensure potential environmental effects are carefully evaluated in each bridge permitting decision. Pursuant to NEPA, the USCG, as the lead federal agency, in coordination with the Port of Stockton and their consultant Anchor QEA, completed the draft environmental assessment (DEA) on May 26, 2022 and the FEA on April 3, 2023, for the Proposed Port of Stockton Rail Bridge Replacement and Rail Improvements Project, at the Port of Stockton. The USCG issued a Finding of No Significant Impact (FONSI) on April 6, 2023. The results of the analysis provided within the FEA conclude that the Proposed Action would have no significant impact on the environment, and that the preparation of an environmental impact statement is not required.

**Availability:** The Final EA and Final FONSI can be viewed at <https://go.usa.gov/xzpQc>.

**Coast Guard Contact:** Carl Hausner, Chief, Bridge Section, Eleventh Coast Guard District; Email, [Carl.T.Hausner@uscg.mil](mailto:Carl.T.Hausner@uscg.mil); Phone, (510) 437-3516; Mailing Address: Commander (dpw); Eleventh Coast Guard District; Coast Guard Island, Bldg 50-2; Alameda, CA 94501-5100.

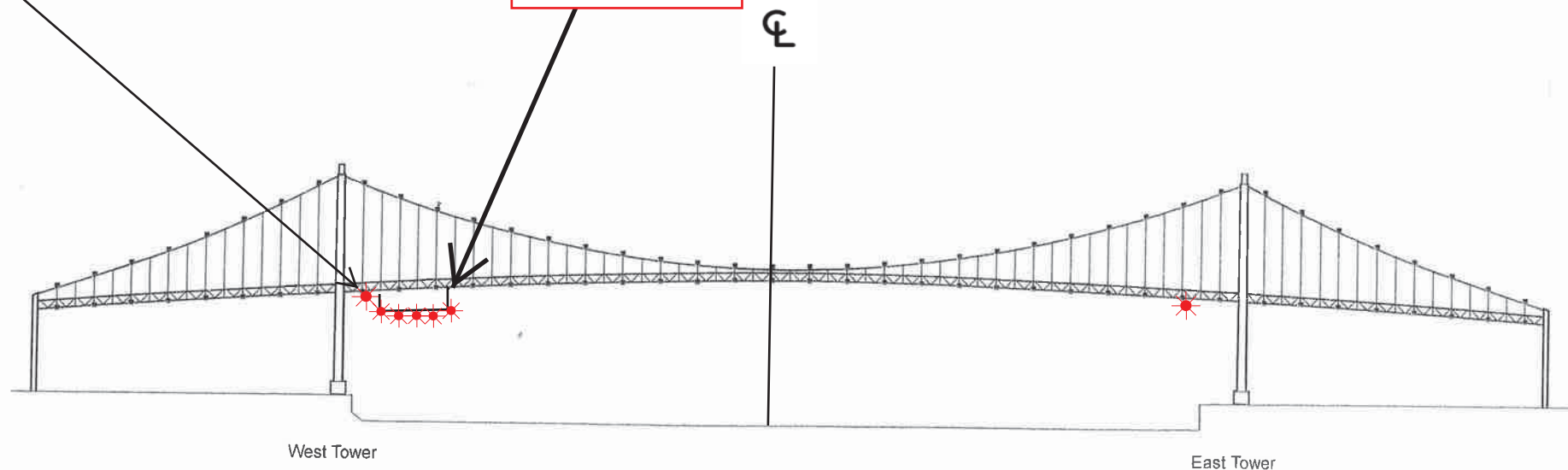
CARL T. HAUSNER  
Chief, Bridge Section  
Eleventh Coast Guard District  
By direction of the District Commander

Attention Postmaster: Please Post.

Vincent Thomas Highway Bridge  
Mile 3.0  
Los Angeles/Long Beach Harbor  
**Painting Project**

West Channel Margin  
Light

Below Low Steel  
Platform. 5' 4"  
reduction in  
vertical clearance



A 180 foot long under deck temporary platform will reduce vertical clearance by 5' 4". Each corner and every 50 feet along the the upstream and downstream side of the platform will lighted at night with steady burning red lights visible at 2000 yards by approaching vessels. In a duration of 1-year the platform will progress from the western channel margin light to 250' west of the centerline of the bridge.