



U.S. Department
of Homeland Security
**United States
Coast Guard**

LOCAL NOTICE TO MARINERS

District: 11

Week: 32/23

CORRESPONDENCE TO:
COMMANDER
DISTRICT ELEVEN (DPW)
COAST GUARD ISLAND BUILDING 50-2
ALAMEDA, CA 94501-5100

REFERENCES: COMDTPUB P16502.6, Light List Volume VI, 2017 Edition, U.S. Chart No.1 12th Edition, and Coast Pilot Volume 7 49th Edition. These publications, along with corrections, are available at: <https://nauticalcharts.noaa.gov/>

BROADCAST NOTICE TO MARINERS - Information concerning aids to navigation and waterway management promulgated through BNM HB-0010-23, SF-0123-23, LA-0083-23, and SD-0055-23 have been incorporated in this notice, or will continue if still significant.

ABBREVIATIONS

A through H

ADRIFT - Buoy Adrift
AICW - Atlantic Intracoastal Waterway
Al - Alternating
B - Buoy
BKW - Breakwater
bl - Blast
BNM - Broadcast Notice to Mariner
bu - Blue
C - Canadian
CHAN - Channel
CGD - Coast Guard District
C/O - Cut Off
CONT - Contour
CRK - Creek
CONST - Construction
DAYMK/Daymk - Daymark
DBN/Dbn - Daybeacon
DBD/DAYBD - Dayboard
DEFAC - Defaced
DEST - Destroyed
DISCON - Discontinued
DMGD/DAMGD - Damaged
ec - eclipse
EST - Established Aid
ev - every
EVAL - Evaluation
EXT - Extinguished
F - Fixed
fl - flash
Fl - Flashing
G - Green
GIWW - Gulf Intracoastal Waterway
HAZ - Hazard to Navigation
HBR - Harbor
HOR - Horizontal Clearance
HT - Height

I through O

I - Interrupted
ICW - Intracoastal Waterway
IMCH - Improper Characteristic
INL - Inlet
INOP - Not Operating
INT - Intensity
ISL - Islet
Iso - Isophase
kHz - Kilohertz
LAT - Latitude
LB - Lighted Buoy
LBB - Lighted Bell Buoy
LHB - Lighted Horn Buoy
LGB - Lighted Gong Buoy
LONG - Longitude
LNM - Local Notice to Mariners
LT - Light
LT CONT - Light Continuous
LTR - Letter
LWB - Lighted Whistle Buoy
LWP - Left Watching Properly
MHz - Megahertz
MISS/MSNG - Missing
Mo - Morse Code
MRASS - Marine Radio Activated Sound Signal
MSLD - Misleading
N/C - Not Charted
NGA - National Geospatial-Intelligence Agency
NO/NUM - Number
NOS - National Ocean Service
NW - Notice Writer
OBSCU - Obscured
OBST - Obstruction
OBSTR - Obstruction
Oc - Occulting
ODAS - Anchored Oceanographic Data Buoy

P through Z

PRIV - Private Aid
Q - Quick
R - Red
RACON - Radar Transponder Beacon
Ra ref - Radar reflector
RBN - Radio Beacon
REBUILT - Aid Rebuilt
RECOVERED - Aid Recovered
RED - Red Buoy
REFL - Reflective
RRL - Range Rear Light
RELIGHTED - Aid Relit
RELOC - Relocated
RESET ON STATION - Aid Reset on Station
RFL - Range Front Light
RIV - River
RRASS - Remote Radio Activated Sound Signal
s - seconds
SEC - Section
SHL - Shoaling
si - silent
SIG - Signal
SND - Sound
SPM - Single Point Mooring Buoy
SS - Sound Signal
STA - Station
STRUCT - Structure
St M - Statute Mile
TEMP - Temporary Aid Change
TMK - Topmark
TRLB - Temporarily Replaced by Lighted Buoy
TRLT - Temporarily Replaced by Light
TRUB - Temporarily Replaced by Unlighted Buoy
USACE - Army Corps of Engineers
W - White
Y - Yellow

Additional Abbreviations Specific to this LNM Edition: None

SECTION I - SPECIAL NOTICES

This section contains information of special concern to the Mariner.

SUBMITTING INFORMATION FOR PUBLICATION IN THE LOCAL NOTICE TO MARINERS

A complete set of guidelines with examples and contact information can be found at <http://www.pacificarea.uscg.mil/Our-Organization/District-11/Prevention-Division/LnmRequest/> or call Waterways Management Branch at 510-437-2929 or e-mail D11-SMB-D11-LNM@uscg.mil. Please provide all Local Notice to Mariners submissions 14 days prior to the start of operations

LNM: 17/21

BRIDGE INFORMATION- PROJECTS, DISCREPANCIES, CORRECTIONS & REGULATORY

For all bridge related issues, including lighting, operation, obstructions, construction, demolition, etc. contact the Eleventh Coast Guard District Bridge Administrator 24 hour cell phone at 510-219-4366. Flotsam may accumulate on and near bridge piers and abutments. Mariners should approach all bridges with caution. A vessel delay at a drawbridge may be reported to the District Bridge Administrator by telephone, or by using the [Delay_Report_11-2017.pdf](#) included in the Enclosures section of this Local Notice to Mariners.

BRIDGE INFORMATION-COMMUNICATIONS PROTOCOL-BENICIA/MARTINEZ UPRR BRIDGE- CARQUINEZ STRAIT

All mariners requiring a bridge lift at the Benicia-Martinez Union Pacific Railroad Bridge, mile 7.0, over the Carquinez Strait, California, should follow the protocol in the document entitled "Coordination of Communications for Union Pacific Railroad Lift Operations." Mariners can download a copy of the document by selecting the link BENICIA-MARTINEZ RR BRIDGE under the QUICK LINKS section at <https://www.pacificarea.uscg.mil/vtssf>.

CALIFORNIA - SANTA BARBARA - TRAFFIC SEPARATION SCHEME (TSS) EXTENDED

In November of 2022, the International Maritime Organization (IMO) issued an adopted amendment, which goes into effect June 1, 2023. The amendment describes changes to the existing Traffic Separation Scheme (TSS) off Santa Barbara, CA. As a result of these changes, the Traffic Separation Scheme (TSS) has been extended westward. Please be advised that, per an agreement with the USCG Headquarters, NOAA cartographers used more accurate points expressed in degrees, minutes, seconds, and hundredths of seconds, rather than the derived IMO positions published in the IMO circular, which are slightly degraded in terms of accuracy. For details, please see Enclosure included in this Local Notice to Mariners.

Charts: 18020 18022 18700

LNM: 21/23

CALIFORNIA – CALIFORNIA COAST-VOLUNTARY VESSEL SPEED REDUCTION

NOAA, U.S. Coast Guard and the Environmental Protection Agency request that all vessels 300 gross registered tons (GRT) or larger reduce speeds to 10 knots or less when transiting in the Vessel Speed Reduction off of San Francisco, Monterey, and Southern California from 1 May, 2023 until 15 December, 2023 to protect endangered whales. (See 2023 NOAA USCG EPA VSR.pdf in the enclosure section) These areas contain populations of endangered blue, humpback, and fin whales that are federally protected under the Federal Endangered Species Act (16 USC 1538 et seq.), the Marine Mammal Protection Act (to protect endangered whales 16 USC 1361 et seq.), and the National Marine Sanctuaries Act (16 USC 1431 et seq.). Vessels already transiting south of the northern Channel Islands are also encouraged to transit outside of the Area To Be Avoided to reduce the overlap of ships and endangered whales. Please report any collisions with whales or any observed injured or dead whales to the U.S. Coast Guard on VHF Channel 16. NOAA is asking for the public’s help in tracking whales. Please report sightings through Whale Alert, a free application available at <http://westcoast.whalealert.org/>. For more information, contact Sean Hastings at (805) 705-1790 or email at sean.hastings@noaa.gov.

Charts: 18640 18680 18700 18720 18740

LNM: 20/23

CAUTION TO BE USED IN RELIANCE UPON AIDS TO NAVIGATION

The aids to navigation depicted on charts comprise a system of fixed and floating aids to navigation with varying degrees of reliability. Prudent mariners will not rely solely on any single aid to navigation, particularly a floating aid to navigation. With respect to buoys, the buoy symbol is used to indicate the approximate position of the buoy body and the sinker which secures the buoy to the seabed. The approximate position is used because of the practical limitations in positioning and maintaining buoys and their sinkers in precise geographical locations. These limitations include, but are not limited to, inherent imprecision in position fixing methods, prevailing atmospheric and sea conditions, slope of and the material making up the seabed, the fact that buoys are moored to sinkers by varying length of chain, and the fact that the buoy body and/or sinker positions are not under continuous surveillance, but are normally checked only during periodic maintenance visits which often occur more than a year apart. Due to the forces of nature, the position of the buoy body can be expected to shift inside and outside the charted symbol. The mariner is also cautioned that buoys may be extinguished or sound signals may not function as the result of natural causes, collisions, or other accidents. For the foregoing reasons, a prudent mariner must not rely completely upon the position or operation of floating aids to navigation, but will also utilize bearings from fixed objects and aids to navigation on shore. Furthermore, a vessel attempting to pass close aboard always risks collision with a yawing buoy or with the obstruction that the buoy marks.

NAVIGATION CENTER WEBSITE TRANSITION

The U.S. Coast Guard Navigation Center is going to transition the Navigation Center website to a new, enhanced version in the first quarter of 2022. As part of this transition, URLs will be updated across the site including URLs linked to PDFs. Therefore, once the transition is complete, legacy site URLs will no longer function, including bookmarked URLs and URLs used in automatic downloading of data and/or products. Outdated URLs will automatically redirect to the home page of the site, and from there you will be able to easily navigate to your preferred page.

Below are a few of the "old"/new URL pairs listed for your convenience. Please note that the new URLs will not be active until we launch the new website. Of course, once it is launched, the new URLs will be available for re-bookmarking. As a reminder, these are top level URLs that may contain additional links that you use.

This notice will be updated when the final launch date is determined and another notice will be issued to notify you when the site goes live. Questions/concerns may be directed to the NAVCENWebTEAM@uscg.mil.

Local Notices to Mariners (LNMs)

Current URLs: <https://www.navcen.uscg.gov/?pageName=InmMain>

Replacement: <https://www.navcen.uscg.gov/local-notices-to-mariners-by-cg-district>

Light Lists Annual Publication

Current URLs: <https://navcen.uscg.gov/?pageName=lightLists>

Replacement: <https://www.navcen.uscg.gov/light-list-annual-publication>

Light List - Weekly

Current URLs: <https://navcen.uscg.gov/?pageName=lightListWeeklyUpdates>

Replacement: <https://www.navcen.uscg.gov/weekly-light-lists>

Light List - Corrections

Current URLs: <https://navcen.uscg.gov/?pageName=lightListCorrections>

Replacement: <https://www.navcen.uscg.gov/light-list-summary-of-corrections>

LNM: 06/22

NORTHERN CALIFORNIA-SAN FRANCISCO-MILE ROCKS LIGHT-REDUCED NOMINAL RANGE

Mile Rocks Light (LLNR 365) will have a temporarily reduced intensity of 5nm until further notice. Mariners are requested to transit the area with caution. For more details or comments contact LT Miranda Brumbaugh at 510-437-2978 or Miranda.E.Brumbaugh@uscg.mil.

Charts: 18007 18010 18020 18022 18640 18649 18680

LNM: 16/19

SAFETY NOTICE - NAVIGATIONAL RANGE AND SECTOR LIGHTS ON ELECTRONIC CHARTS

"The U.S. Coast Guard has become aware that the Range and Sector Light Characteristic labels are not displayed on Electronic Navigational Charts (ENCs) when used in an Electronic Chart Display and Information System (ECDIS) due to limitations of the S-52 ECDIS display specification. Mariners may query the ENC data directly within ECDIS or refer to the Light List for complete information on Range and Sector Light Characteristics."

LNM: 39/22

SOUTHERN CALIFORNIA - CHANNEL ISLANDS - AREA TO BE AVOIDED (ATBA) ENLARGED

In November of 2022, the International Maritime Organization (IMO) issued an adopted amendment, which goes into effect June 1, 2023. The amendment describes changes to the existing Area To Be Avoided (ATBA) around the Channel Islands, CA. As a result of these changes, the Area To Be Avoided (ATBA) has been significantly increased in size. Please be advised that, per an agreement with the USCG Headquarters, NOAA cartographers used more accurate points expressed in degrees, minutes, seconds, and hundredths of seconds, rather than the derived IMO positions published in the IMO circular, which are slightly degraded in terms of accuracy. For details, please see Enclosure included in this Local Notice to Mariners.

Charts: 18020 18022 18700 18720 18724 18725 18728 18729 18740

LNM: 21/23

SOUTHERN CALIFORNIA-SAN DIEGO BAY-MINIMIZE WAKE

The Navy Port Operations Manager requests that vessels slow to 7 kts when a vessel is moored in restricted area (33 CFR 334.865) located on the northeast side of North Island at 32-42-57N 117-11-22W, between San Diego Channel Lighted Buoy 20 (LLNR 1710) and San Diego Channel Lighted Buoy 22 (LLNR 1830). For more details or comments contact LT Rodriguez at 619-545-3232, Rigoberto.rodriguez3@navy.mil.

Chart 18773

LNM: 10/22

SUBMITTING INFORMATION FOR PUBLICATION IN THE LOCAL NOTICE TO MARINERS

Coast Guard District Eleven Waterways upgrade to E-Mail capabilities. All future requests for article submission in the District Eleven Local Notice to Mariners are requested to be E-Mailed to D11-SMB-SMB-D11-LNM@uscg.mil at least two weeks prior to the operation. For more details or comments please contact District Eleven Waterways Management Branch at 510-437-2929 or e-mail D11-SMB-D11-LNM@uscg.mil. Coast Guard District Eleven requests all Local Notice to Mariners submissions be E-Mailed to our office at least 14 days prior to the start of operations for timely submittal and publication.

LNM: 17/21

SECTION II - DISCREPANCIES

This section lists all reported and corrected discrepancies related to Aids to Navigation in this edition. A discrepancy is a change in the status of an aid to navigation that differs from what is published or charted.

DISCREPANCIES (FEDERAL AIDS)

<u>LLNR</u>	<u>Aid Name</u>	<u>Status</u>	<u>Chart No.</u>	<u>BNM Ref.</u>	<u>LNM St</u>	<u>LNM End</u>
-------------	-----------------	---------------	------------------	-----------------	---------------	----------------

10	San Diego Bay Approach Lighted Whistle Buoy SD	RAC INOP	18772	SD-0070-22	38/22
125	Long Beach Light	LT EXT	18751	LA-0148-20	49/20
280	Point Sur Light	LT EXT	18680	SF-0085-23	19/23
330	Pillar Point Harbor Approach Lighted Buoy PP	DAYMK MISSING	18680	SF-0081-23	17/23
360	San Francisco Approach Lighted Whistle Buoy SF	RAC INOP	18649	SF-0040-22	17/22
365	Mile Rocks Light	LT EXT	18649	SF-0099-22	44/22
450	Point Cabrillo Light	LT EXT	18620	HB-0009-23	28/23
500	NOAA Environmental Lighted Buoy 46022	MISSING	18620		20/23
1485	San Diego Bay Approach Lighted Whistle Buoy SD	RAC INOP	18772	SD-0070-22	38/22
1493	San Diego Bay Approach Lighted Bell Buoy 4	LT IMCH	18772	SD-0074-22	41/22
1535	Zuniga Jetty Light W	STRUCT DEST	18773	SD-0038-23	26/23
2020	San Diego Bay Channel Lighted Buoy 34	OFF STA	18773	SD-0037-23	25/23
2635	Ship Rock Light	LT EXT	18757	LA-0095-21	26/21
2641	Isthmus Cove Harbor Reefs Light	STRUCT DMGD	18757	LA-0018-21	05/21
2670	Santa Catalina Island West End Light	LT EXT	18757	LA-0113-19	34/19
2810	Anaheim Bay Channel Buoy 7	OFF STA	18749	LA-0062-22	30/22
3012	Long Beach Light	LT EXT	18751	LA-0148-20	49/20
3117	Los Angeles Main Channel Lighted Buoy 11	REDUCED INT	18751	LA-0105-21	28/21
3132	Terminal Island Channel Lighted Buoy 1	STRUCT DMGD	18751	LA-0027-22	16/22
3330	Redondo Beach West Jetty Light 3	STRUCT DEST	18744	LA-0021-23	09/23
3750	Santa Barbara Harbor Breakwater Light	SS INOP	18725	LA-0029-23	14/23
3877	Morro Bay Rough Bar Warning Light	LT EXT	18703	LA-0027-23	12/23
3970	Monterey Harbor Light 6	SS INOP	18685	SF-0064-20	27/20
4130	Pillar Point Harbor Entrance Lighted Gong Buoy 1	HAZ NAV/SS INOP/STRUCT DMGD	18680	SF-0082-23	17/23
4140	Pillar Point Harbor Entrance Lighted Bell Buoy 3	LT EXT	18680	SF-0100-23	24/23
4175	San Francisco Main Ship Channel Lighted Buoy 4	LT EXT	18649	SF-0116-23	30/23
4245	Mile Rocks Light	LT EXT	18649	SF-0099-22	44/22
4610	Oakland Outer Harbor Range B Front Light	DAYMK MISSING	18650	SF-0070-23	14/23
4625	Oakland Outer Harbor Range A Rear Light	LT EXT	18650	SF-0092-22	42/22
4630	Oakland Outer Harbor Lighted Buoy 3	OFF STA	18650	SF-0117-23	30/23
4655	Oakland Outer Harbor Light 13	MISSING/TRLB	18650	SF-0067-23	14/23
4680	Oakland Inner Harbor Light 10	MISSING/TRLB	18650	SF-0052-21	02/22
4684	Oakland Inner Harbor Turn Basin Light B	STRUCT DMGD/TRLB	18650	SF-0097-21	29/21
4740	San Leandro Bay Airport Channel Daybeacon 6	STRUCT DEST/TRUB	18650	SF-0033-22	15/22
4830	San Leandro Marina Channel Light 1	LT EXT/SS INOP		SF-0012-23	02/23
5225	Redwood Creek Light 11	STRUCT DEST/TRLB		SF-0097-23	24/23
5430	Berkeley Marina Channel Light 2	LT EXT	18650	SF-0086-22	40/22
5700	Richmond Harbor Channel Lighted Buoy 6	OFF STA	18650	SF-0113-23	28/23
5725	Richmond Harbor Channel Light 9	MISSING/TRLB	18649	SF-0098-22	43/22
5845	San Rafael Creek Light 3	STRUCT DEST	18653	SF-0109-23	27/23
5890	San Pablo Bay Preferred Channel Lighted Buoy E	SINKING	18654	SF-0122-23	31/23
6095	Mare Island Strait Light 2	STRUCT DMGD/TRLB	18655	SF-0152-20	49/20

6240	Carquinez Strait Light 23	LT EXT	18656	SF-0008-23	02/23
6685	San Joaquin River Light 8	STRUCT DMGD/TRLB	18656	SF-0109-21	02/22
6830	San Joaquin River Light 39	STRUCT DMGD	18661	SF-0119-23	30/23
6855	San Joaquin River Light 46	STRUCT DEST/TRLB	18661	SF-0057-22	28/22
7210	Sacramento River Deep Water Ship Channel Light 10	MISSING/TRLB	18656	SF-0101-21	32/21
7235	Sacramento River Deep Water Ship Channel Light 15	MISSING/TRLB	18661	SF-0100-20	35/20
7240	Sacramento River Deep Water Ship Channel Light 16	STRUCT DEST/TRLB	18661	SF-0127-18	34/18
7260	Sacramento River Deep Water Ship Channel Light 20	MISSING/TRLB	18661	SF-0108-21	05/23
7810	Bodega Harbor Channel Light 6	STRUCT DMGD/TRLB		SF-0028-21	08/23
7815	Bodega Harbor Channel Daybeacon 7	STRUCT DEST/TRLB		SF-0046-23	08/23
8150	Humboldt Bay Entrance Light 3	LT IMCH	18622	HB 0010-23	32/23

DISCREPANCIES (FEDERAL AIDS) CORRECTED

LLNR	Aid Name	Status	Chart No.	BNM Ref.	LNM St	LNM End
4683	Oakland Inner Harbor Turn Basin Light A	WATCHING PROPERLY	18650	SF-0103-23	25/23	32/23
5657	Southampton Shoal Channel Lighted Buoy 5	WATCHING PROPERLY	18649	SF-0038-23	06/23	17/32
5923	Pinole Shoal Range Rear Light	WATCHING PROPERLY	18654	SF-0123-23	32/23	32/23

DISCREPANCIES (PRIVATE AIDS)

LLNR	Aid Name	Status	Chart No.	BNM Ref.	LNM St	LNM End
20	Ocean Beach Pier Fog Sound Signal	SS INOP	18765	SD-0002-19	05/19	
158	Scripps Waverider Lighted Research Buoy 092	OFF STA	18746		45/18	
505	Scripps Waverider Lighted Research Buoy 168	LT EXT	18620	HB-0003-22	14/22	
1665	Americas Cup Harbor Daybeacon 2	STRUCT DEST/TRUB	18773	SD-0001-22	02/22	
2056	Sweetwater Channel Light 6	STRUCT DEST	18773	SD-0087-22	47/22	
2070	Coronado Cays Channel Daybeacon 3	STRUCT DEST	18773	SD-0098-17	36/17	
2090	Coronado Cays Channel Light 7	STRUCT DEST/TRUB	18773	SD-0046-22	31/22	
2159.1	Chula Vista Channel Shoal Light B	STRUCT DEST	18773	SD-0021-23	14/23	
2288	Scripps Waverider Lighted Research Buoy 220	OFF STA	18765	SD-0041-20	30/20	
2289.1	Scripps Waverider Lighted Research Buoy 100	OFF STA	18765		22/20	
2289.4	Scripps "CORDC" Lighted Research Buoy	MISSING	18765		22/20	
2764.4	Catalina Sea Ranch SE Buoy	MISSING	18746	LA-0001-22	03/22	
2871	Long Beach Harbor Brusco Lighted Mooring Buoy	LT EXT	18751	LA-0009-21	03/21	
3339.2	REDONDO HARBOR LIGHT	LT EXT	18744	LA-0181-18	52/18	
3400	El Segundo NRG Energy Buoy 6ES	SINKING	18744	LA-0153-21	39/21	
3420	Hyperion Lighted Gong Buoy 10 ES	LT EXT	18744		16/20	
3972.1	Monterey Harbor Junction Lighted Buoy A	Status Unreported	18685	SF-0039-23	06/23	
4401	Richardson Bay Daybeacon 8	DAYMK DMGD	18653		15/20	
4402	Richardson Bay Daybeacon 9	STRUCT DMGD	18649	SF-0086-18	23/18	
4420	San Francisco-Oakland Bay Bridge Pier A Fog Signal	SS INOP	18650	SF-0034-23	06/23	
4460	San Francisco-Oakland Bay Bridge Pier E Fog Signal	SS INOP	18650	SF-0034-23	06/23	
4576	South Beach Harbor North Entrance Light 2	LT EXT	18650	SF-0047-21	11/21	

4577	South Beach Harbor North Entrance Light 1	LT EXT	18650	SF-0046-21	10/21
4578	South Beach Harbor South Entrance Light 1	LT EXT	18650	SF-0091-20	33/20
4826	Bay Farm Island Light 1	LT EXT	18650	SF-0014-19	05/19
4826.15	Bay Farm Island Light 3	LT EXT	18650	SF-0014-19	04/19
4826.2	Bay Farm Island Light 4	LT EXT	18650	SF-0136-21	44/21
4827.1	San Francisco Bay Anchorage 9 Lighted Mooring Buoy A	LT EXT	18650	SF-0012-20	04/20
4828.1	San Francisco Bay Anchorage 9 Lighted Mooring Buoy B	LT EXT	18650	SF-0013-20	04/20
5661	Southampton Shoal Outfall Lighted Buoy 1	LT EXT/RAC INOP	18653	SF-0026-19	07/19
5661	Southampton Shoal Outfall Lighted Buoy 1	MISSING/TRLB	18653	SF-0029-20	18/21
5661	Southampton Shoal Outfall Lighted Buoy 1	STRUCT DMGD	18653	SF-0126-22	52/22
5662	Southampton Shoal Outfall Lighted Buoy 2	LT EXT	18653	SF-0059-21	14/21
5877.2	San Rafael Rock Quarry Mooring Buoy C	MISSING	18653		36/18
6623	New York Slough Koch West Light	LT IMCH			39/18
6624	New York Slough Koch East Light	LT EXT			39/18
6645.5	Delta Diablo Outfall Lighted Buoy	LT EXT		SF-0005-22	02/22
6677	Antioch Marina Entrance Light 1	LT IMCH	18656		18/23
8325	Pacific Gas and Electric Dike Light	LT EXT	18622	HB-0009-21	20/21
8591.1	Lake Tahoe NASA-JPL Lighted Research Buoy TB2	Status Unreported			37/22

DISCREPANCIES (PRIVATE AIDS) CORRECTED

LLNR	Aid Name	Status	Chart No.	BNM Ref.	LNM St	LNM End
------	----------	--------	-----------	----------	--------	---------

None

PLATFORM DISCREPANCIES

Name	Status	Position	BNM Ref.	LNM St	LNM End
------	--------	----------	----------	--------	---------

None

PLATFORM DISCREPANCIES CORRECTED

Name	Status	Position	BNM Ref.	LNM St	LNM End
------	--------	----------	----------	--------	---------

None

SECTION III - TEMPORARY CHANGES and TEMPORARY CHANGES CORRECTED

This section contains temporary changes and corrections to Aids to Navigation for this edition. When charted aids are temporarily relocated for dredging, testing, evaluation, or marking an obstruction, a temporary correction shall be listed in Section IV giving the new position.

TEMPORARY CHANGES

LLNR	Aid Name	Status	Chart No.	BNM Ref.	LNM St	LNM End
280	Point Sur Light	Reduced Intensity	18680	SF-0105-20	35/20	

TEMPORARY CHANGES CORRECTED

LLNR	Aid Name	Status	Chart No.	BNM Ref.	LNM St	LNM End
------	----------	--------	-----------	----------	--------	---------

None

PLATFORM TEMPORARY CHANGES

Name	Status	Position	BNM Ref.	LNM St	LNM End
------	--------	----------	----------	--------	---------

None

PLATFORM TEMPORARY CHANGES CORRECTED

Name	Status	Position	BNM Ref.	LNМ St	LNМ End
None					

SECTION IV - CHART CORRECTIONS

This section contains corrections to federally and privately maintained Aids to Navigation, as well as NOS corrections. This section contains corrective actions affecting chart(s). Corrections appear numerically by chart number, and pertain to that chart only. It is up to the mariner to decide which chart(s) are to be corrected. The following example explains individual elements of a typical chart correction.

Chart Number	Chart Edition	Edition Date	Last Local Notice to Mariners	Horizontal Datum Reference	Source of Correction	Current Local Notice to Mariners
12327	91st Ed.	19-APR-97	Last LNM: 26/97	NAD 83		27/97
Chart Title: NY-NJ-NEW YORK HARBOR - RARITAN RIVER						
Main Panel 2245 NEW YORK HARBOR						
(Temp)	ADD	NATIONAL DOCK CHANNEL BUOY 3			CGD01	at 40-41-09.001N 074-02-48.001W
	Corrective Action	Green can	Object of Corrective Action		Position	

(Temp) indicates that the chart correction action is temporary in nature. Courses and bearings are given in degrees clockwise from 000 true. Bearings of light sectors are toward the light from seaward. The nominal range of lights is expressed in nautical miles (NM) unless otherwise noted.

18622 **56th Ed.** **01-APR-16** **Last LNM: 05/21** **NAD 83** **32/23**

Chart Title: **Humboldt Bay**

Main Panel 1809 HUMBOLDT BAY. Page/Side: A

LAST EDITION No new editions of chart 18622 will be published. It will be canceled on 30-Aug-23. Comparable or larger scale Electronic Navigational Chart (ENC) coverage is available. See "Cancellation of NOAA Paper and Raster Nautical Charts" in Section I of this LNM for details. A list of all canceled NOAA charts is at <https://www.charts.noaa.gov/MCD/Dole.shtml>.

NOS
--

18751 **48th Ed.** **01-JUL-16** **Last LNM: 21/09** **NAD 83** **32/23**

Chart Title: **Los Angeles and Long Beach Harbors**

Main Panel 1904 LOS ANGELES AND LONG BEACH HARBORS. Page/Side: A

LAST EDITION No new editions of chart 18751 will be published. It will be canceled on 30-Aug-23. Comparable or larger scale Electronic Navigational Chart (ENC) coverage is available. See "Cancellation of NOAA Paper and Raster Nautical Charts" in Section I of this LNM for details. A list of all canceled NOAA charts is at <https://www.charts.noaa.gov/MCD/Dole.shtml>.

NOS
--

SECTION V - ADVANCE NOTICES

This section contains advance notice of approved projects, changes to aids to navigation, or upcoming temporary changes such as dredging, etc. Mariners are advised to use caution while transiting these areas.

SUMMARY OF ADVANCED APPROVED PROJECTS

<u>Approved Project(s)</u>	<u>Project Date</u>	<u>Ref. LNM</u>
None		
<u>Advance Notice(s)</u>		
None		

SECTION VI - PROPOSED CHANGES

Periodically, the Coast Guard evaluates its system of aids to navigation to determine whether the conditions for which the aids to navigation were established have changed. When changes occur, the feasibility of improving, relocating, replacing, or discontinuing aids are considered. This section contains notice(s) of non-approved, proposed projects open for comment. SPECIAL NOTE: Mariners are requested to respond in writing to the District office unless otherwise noted (see banner page for address).

PROPOSED WATERWAY PROJECTS OPEN FOR PUBLIC COMMENT

Proposed Project(s)

None

Closing

Docket No.

Ref. LNM

Proposed Change Notice(s)

CALIFORNIA-SAN FRANCISCO TO SAN DIEGO-REMOVAL OF RACONS ON AIDS TO NAVIGATION

The U.S. Coast Guard will be removing the RACONS from aids to navigation located along the California Coast due to the consistent failure of the signals and that they are no longer considered necessary for safe navigation of the waterways. While there is no specific timeline for the removal of this equipment, it will be coordinated with servicing and discrepancy responses. The removal of the RACONS will be announced by Broadcast Notice to Mariners and published in the Local Notice to Mariners as Chart and Light List corrections. These aids to navigation are:

San Francisco Approach Lighted Whistle Buoy SF (LLNR 360): 37-44-59.761N 122-41-33.995W
Harding Rock Lighted Buoy HR (LLNR 4330): 37-50-17.661N 122-26-45.579W
Los Angeles Approach Channel Lighted Whistle Buoy 3 (LLNR 3107): 33-41-16.012N 118-14-24.050W
Long Beach Channel Approach Lighted Whistle Buoy LB (LLNR 3010): 33-41-24.013N 118-11-01.050W
San Diego Bay Approach Lighted Whistle Buoy SD (LLNR 10): 32-37-20.204N 117-14-45.177W

Mariners are requested to respond in writing to the Coast Guard District office with any comments on this change at D11-SMB-D11-LNM@uscg.mil. Any discrepancy for these or other Aids to Navigation should continue to be reported to the closest US Coast Guard Sector.

Charts: 18007 18010 18022 18640 18649 18650 18680 18746 18749 18765 18772 LNM: 05/23

SOUTHERN CALIFORNIA – LOS ANGELES – BUOY DISESTABLISHMENT

The U.S. Coast Guard is proposing to permanently disestablish the Los Angeles East Basin Channel Buoy 4. The aid is in the approximate position: 33-46-21N, 118-14-55W. For more details or comments, contact no later than 25 October, 2023 to LTJG Samantha Hu at 510-437-2983 or Samantha.G.Koval@uscg.mil.

Chart 18751 LNM: 30/23

SOUTHERN CALIFORNIA-SAN MATEO-SAN MATEO LIGHT

The U.S. Coast Guard is proposing to permanently disestablish the San Mateo Point Light LLNR 80. The aid is in position: 33-23-18.241N, 117-35-44.642W. Direct any questions, comments, or feedback no later than October 31, 2023 to LTJG Samantha Hu at 510-437-2983 or Samantha.G.Koval@uscg.mil.

Charts: 501 18020 18022 18740 18774 LNM: 31/23

SOUTHERN CALIFORNIA-SANTA BARBARA-SANTA BARBARA HARBOR BREAKWATER LIGHT

The U.S. Coast Guard is planning to install a Mariner Radio Activated Sound Signal (MRASS) device on Santa Barbara Harbor Breakwater Light (LLNR 3750). This device will allow the mariner to activate the installed sound signal by keying on a VHF-FM radio microphone six times at the designated frequency for the AtoN (83A). Please direct questions, comments, or concerns no later than 27 October, 2023 to LTJG Samantha Hu at 510-437-2983 or Samantha.G.Koval@uscg.mil.

Charts: 18720 18725 LNM: 30/23

SECTION VII - GENERAL

This section contains information of general concern to the Mariners. Mariners are advised to use caution while transiting these areas.

ANNOUNCEMENT – U.S. Coast Pilot® 7 and U.S. Coast Pilot® -NEW EDITIONS-Spring 2023

PUBLICATION–National Oceanic Atmospheric Administration (NOAA) – U.S. Coast Pilot 7, Pacific Coast: California, 55th Edition, 2023, has been issued and is ready for free download and weekly updates at www.nauticalcharts.noaa.gov/publications/coast-pilot/index.html.

Only Print-on-Demand (POD) bound copies are available for purchase; visit nauticalcharts.noaa.gov/publications/print-agents.html#coast-pilot. The 2023 Edition cancels the preceding 2022 Edition, and incorporates all previous corrections.

LNM: 22/23

ARIZONA/CALIFORNIA-COLORADO RIVER-BRIDGE

INTERSTATE 8 BRIDGE (YUMA, AZ)-Repair work on the bridge will be conducted Monday through Friday, 6 a.m. to 3 p.m., 27 February, 2023 until 01 September, 2023. A 60 ft X 40 ft temporary trestle will be installed on the south bank of the river, beneath the bridge deck, extending 60 feet into the river. The channel ward ends of the trestle will be lighted at night with steady burning red lights (See I-8_Trestle_Lighting.pdf at the end of this notice.) For bridge condition updates, mariners can contact Caltrans at 858-688-1511 or 858-289-1269. Mariners are requested to transit the area with caution. For further information contact the Coast Guard Bridge Office at 510-437-3515.

LNM: 07/23

ARIZONA/NEVADA-COLORADO RIVER-BRIDGE

NEW LAUGHLIN-BULLHEAD CITY BRIDGE- Work continues on the construction of the new bridge in position 35-03-17N 114-36-45W. Work is being conducted Monday through Friday, 0630 to 1430, until 03 Oct, 2023. The bridge completely spans the river. The center of the navigation span provides 30 ft of vertical clearance at ordinary high water and the centerline is marked on the upstream and downstream sides with two green

ARIZONA/NEVADA-COLORADO RIVER-BRIDGE

center channel lights. The access pads on the Arizona and Nevada side have been reduced exposing piers of the new bridge. The upriver and downriver ends of the piers, as well as the channel ward side of middle pier, and the upriver and downriver in-ward tip of the Nevada side access pad and the downriver inward tip of the Arizona side access pad are lit at night with steady burning red lights, visible at 2,000 yards by approaching vessels. A fourth red light will be installed on the northeast side of the river to mark the area to keep vessels out (see RockAccessPad_Lighting02.pdf at the end of this notice). Approximately 117 feet of horizontal clearance is provided in the center of the river during construction. For on-site conditions contact 702-455-6030 or 702-817-7088, or 702-286-0137. For further information contact the Coast Guard Bridge Office at 510- 437-3515.

LNM: 21/23

CALIFORNIA –PORT OF LOS ANGELES –UNMANNED UNDERWATER VEHICLE

Boeing will be conducting operational autonomous unmanned underwater vehicle (UUV) from 7 August, 2023 until 30 September, 2023 in the vicinity the Port of Los Angeles in the areas bound by the following coordinates:

OPAREA1:

33-42-25N 118-19-55W

33-39-47N 118-21-36W

33-41-13N 118-24-40W

33-43-48N 118-22-48W

OPAREA2:

33-26-33N 118-26-55W

33-25-33N 118-23-59W

33-25-36N 118-21-19W

33-29-14N 118-18-35W

33-31-35N 118-23-31W

33-28-10N 118-26-55W

M/V AMERICAN ISLANDER will be on scene and monitoring VHF-FM Chan. 14 & 16. Mariners are requested to keep 1 Nautical Mile from the UUV and M/V AMERICAN ISLANDER. Mariners are requested to transit the area with caution. For more details or comments contact Greg Gaskey at 253-229-8809.

Chart 18022

LNM: 32/23

CALIFORNIA- OFFSHORE CALIFORNIA-SALMON FISHERIES

NMFS has taken inseason action in the commercial fishery north of Cape Falcon.

EFFECTIVE JUNE 24, 2023 AT 12:01 AM, FOR THE COMMERCIAL SALMON TROLL FISHERY IN THE AREA BETWEEN THE U.S./CANADA BORDER AND CAPE FALCON, THE LANDING AND POSSESSION LIMIT IS 11 CHINOOK PER VESSEL FOR THE PERIOD JUNE 24 THROUGH JUNE 29.

EFFECTIVE JULY 1, 2023 AT 12:01 AM THROUGH SEPTEMBER 30, 2023 AT 11:59PM, FOR THE COMMERCIAL SALMON TROLL FISHERY IN THE AREA BETWEEN THE U.S./CANADA BORDER AND CAPE FALCON, THE LANDING AND POSSESSION LIMIT IS 50 CHINOOK PER VESSEL PER LANDING WEEK (THURSDAY-WEDNESDAY).

For more details or comments contact Shannon Penna at 562-980-4239.

Charts: 18620 18640 18680 18700 18720 18740

LNM: 26/23

CALIFORNIA- OFFSHORE CALIFORNIA-SALMON FISHERIES

NMFS has taken inseason action in the recreational salmon fishery in the area north of Cape Falcon. Please broadcast the NTM below three times daily beginning Wednesday, July 26, 2023, and ending August 2, 2023.

EFFECTIVE JULY 28, 2023 AT 12:01 AM FOR THE RECREATIONAL SALMON FISHERY FROM QUEETS RIVER TO LEADBETTER POINT (MARINE AREA 2 - WESTPORT SUBAREA), RETENTION OF CHINOOK IS PROHIBITED ON FRIDAYS AND SATURDAYS. POSSESSION OF CHINOOK IS ILLEGAL WHEN RETENTION IS PROHIBITED IN THE AREA.

Charts: 18620 18640 18680 18700 18720 18740

LNM: 31/23

CALIFORNIA-OFFSHORE CALIFORNIA-SUVERY OPERATIONS

SAILDRONE, INC. is conducting oceanographic research with Uncrewed Surface Vehicles (USVs), called SAILDRONE EXPLORERS off the coast of California, Oregon and Washington during the months from July through September 2023. SAILDRONE EXPLORERS are 23 feet in length, 16 ft tall, orange in color, have a white all around light on top of the wing and are marked "SAILDRONE". Three of these vehicles will be following 30 Nautical mile long transects starting 5 nm from shore and running perpendicular to shore on an east/west or west/east course. Sailable vehicles are uncrewed, wind and solar powered, and will have limited maneuverability during survey operations. Mariners are requested to remain greater than 500 meters away from the research equipment and to transit the area with caution. For more details or comments contact Saildrone at 510722-6070 or missioncontrol@saildrone.com.

Charts: 18600 18620 18640 18680 18700 18720

LNM: 24/23

LOWER COLORADO RIVER-LAUGHLIN-FIREWORKS

The Avi Resort and Casino will be hosting the Fireworks over the Colorado River fireworks event on 9 August, 2023 from 7:30pm to 9:00pm in Laughlin, NV. Nevada Fish & Game will be enforcing temporary waterway closures between Veteran’s Bridge and the north end of Avi Resort Lagoon for the event. Mariners are requested to transit the area with caution. For further comments or details, contact David Smith at 702-535-5595.

LNM: 26/23

LOWER COLORADO RIVER-LAUGHLIN-MARINE EVENT

The Avi Resort & Casino will be hosting the Fireworks Over the Colorado River fireworks event on 28 May, 3 July, and 3 September, 2023 from 7:00pm to 9:00pm each day in Laughlin, NV. Waterway closures will be in effect from Veterans Bridge to the north end of Avi Resorts Lagoon during the event. For more details comments contact David Smith at 702-420-3928.

LNM: 15/23

LOWER COLORADO RIVER-PARKER-MARINE EVENT

RPM Racing Enterprises will be sponsoring the Blue Water Resort & Casino Rounds 8 & 9 Best of the West Series on 18-20 August, 2023 from 6:00am to 6:00pm each day. The event will involve approximately 18-20 classes of personal watercraft racing on a course in the vicinity of Blue

LOWER COLORADO RIVER-PARKER-MARINE EVENT

Water Beach. Mariners are requested to transit the area with caution. For more details or comments, contact Ross Wallach at 310-318-4012.

LNM: 26/23

LOWER COLORADO RIVER-PARKER-MARINE EVENT

The Southern California Speedboat Club will be sponsoring the Blue Water Resort & Casino Absolute Speed event on 11-13 August, 2023 from 6:00am to 6:30pm each day. The event will involve approximately 15-17 classes of powerboats racing on a course in the vicinity of Blue Water Beach. Mariners are requested to transit the area with caution. For more details or comments, contact Ross Wallach at 310-318-4012.

LNM: 26/23

NORTHERN CALIFORNIA-DELTA & RIVERS-HONKER CUT-BISHOP CUT-BRIDGES

8-MILE ROAD BRIDGES-San Joaquin County is requesting to secure the swing spans of both 8-mile Road bridges in the closed to navigation position over Honker Cut and Bishop Cut from October 1st to February 28th in either 2023 or 2024 for major bridge rehabilitation. Comments concerning the impact on navigation this request may have can be made to the Coast Guard at D11-SG-M-DPW-Bridges@uscg.mil through September 1, 2023.

Chart 18663

LNM: 32/23

NORTHERN CALIFORNIA - SANTA CRUZ - WAVERIDER BUOY

A Waverider buoy has been deployed at 36-56-04N 122-02-02W near Santa Cruz, CA. The buoy will be used for wave measurements to aid the Coastal Data Information Program. For questions, contact Ross Timmerman at 619-818-8387.

Chart 18685

LNM: 33/22

NORTHERN CALIFORNIA -SAN FRANCISCO BAY- DEMOLITION

Silverado Contractors, Inc. will commence demolition in the San Francisco Bay, Point San Pablo at 37-57-48N 122-25-45W from 10 July, 2023 until 30 November, 2023 from 6:00am to 5:00pm. Spud Barge CB2, HITACHI 870 Excavator, LITTLE CINDY Material Barge Tec-36 Material Barge and Work Skiffs will be onsite to complete the demolition and monitoring VHF-FM CHAN. 71. Mariners are requested to transit the area with caution. For more information contact Matt Bramlett at 925-818-2324.

Chart 18653

LNM: 26/23

NORTHERN CALIFORNIA- SACRAMENTO RIVER- LEVEE CONSTRUCTION

The Dutra Group will be conducting levee construction along the Sacramento River between Tower Bridge and Freeport Bridge in Sacramento from 1 July, 2023 until 30 November, 2023 during daylight hours. Crane Barge TM20, Crange Barge KELSO, and Crane Barge #1, along with a work boat and tug boat will be monitoring VHF-FM Chan. 9, 16 & 68. Mariners are requested to transit the area with caution. For more details or comments contact Scott Brooks at 707-333-5029.

Chart 18661

LNM: 21/23

NORTHERN CALIFORNIA- SACRAMENTO RIVER-MARINE CONSTRUCTION

The Dutra Group will be conducting marine construction south side of the Sacramento River bordering Brannan Island between River Mile 14.60 and 17.34, between the Sacramento River and Cache Slough River mouth to Ramos CFN in Isleton from 2 August, 2023 until 31 December, 2023. The Crane Barge 1 (50'x150') equipped with a 390' Long Reach Excavator along with a tugboat and miscellaneous small skiffs will be utilized on the project. The crane barge will be spudded at various locations during construction within the construction area. The material barge will be in transit from the San Rafael Rock Quarry. The material barges will be moored onsite while waiting to be offloaded or transported back to the quarry. The crane barge, as well as the workboats will mobilize from Dutra's Rio Vista Yard to the Sacramento River project site. Work will occur during daylight hours but towing of material supply barges and maneuvering of the spud barge outside of the construction area may continue at all hours. At the end of each shift, crane barges will be spudded in with flashers on all corners along with all other marine equipment. The Crane Barge crews will monitor VHF-FM CHAN. 9, 16 & 68A, or can be reached by calling 707-333-5029. The upstream and downstream corners of each barge will be lighted at night with steady burning red lights. Mariners are advised to use extreme caution while transiting the construction site. Mariners are urged to transit at their slowest safe speed to minimize wakes. For more details or comments contact William Ng at 707-231-6862.

LNM: 31/23

NORTHERN CALIFORNIA- SAUSALITO- DREDGING OPERATIONS

Salt River Construction Corporation will be conducting dredging operations in the Richardson Bay Marina, Sausalito, County of Marin at 37-52-38N 122-30-11W on 31 July, 2023 through 30 November, 2023. The self-contained dredge/dump barges No. 1, No. 2, Tugboat "P CAY" (call sign WDM4874) and the Tugboat "SPRINGER" (call sign WDH5205) will be on the scene and monitoring VHF chan. 13, 14, & 78. There will be no temporary mooring piles or anchor balls placed by Salt River Construction outside the channel entrance of the Richardson Bay Marina. However, SRCC will be placing a 300' silt curtain/debris boom along the East side of the Marina, per Regulatory requirements. This boom will not affect navigation in the area. Mariners are requested to transit the area with caution. For details or comments contact Rick Moseley at 415-435-1024.

LNM: 29/23

NORTHERN CALIFORNIA-ALAMEDA TO PIONEER SEAMOUNT AREA-SEA TRIALS

SAILDRONE, INC. is conducting offshore oceanographic research survey testing and will operate up to five Unmanned Surface Vehicles called SAILDRONE Explorers and SAILDRONE Voyagers until 30 September, 2023, in the Pioneer Seamount area. The operations will be conducted within the following coordinates:

Survey Site 1: 37-22.00N 123-19.80W

37-22.00N 123-08.40W

37-15.00N 123-08.40W

37-15.00N 123-19.80W

Survey Site 2: 37-31.00N 122-57.00W

37-28.00N 123-04.00W

37-26.00N 122-53.00W

37-23.00N 123-00.00W

The Saildrone Explorer is 23 feet long, 16 feet tall, painted orange with a white all-around light on top and marked SAILDRONE. The Saildrone Voyager is 33 feet long, 21 feet tall and painted orange or gray and marked SAILDRONE. Saildrones will broadcast AIS and travel at a speed up to 5 knots. Mariners are requested to transit the area with caution and maintain a 500 meters separation from the Saildrone. For more details or comments contact Saildrone mission control at missioncontrol@saildrone.com or 510-722-6070.

NORTHERN CALIFORNIA-ALAMEDA TO PIONEER SEAMOUNT AREA-SEA TRIALS

Charts: 18640 18680

LNM: 10/23

NORTHERN CALIFORNIA-ALCATRAZ ISLAND-MARINE CONSTRUCTION

Manson Construction Co. will be conducting marine construction to the wharf at Alcatraz Island at 37-49-36N 122-25-15W. Construction will begin on 23 January, 2023 and be completed on 04 October, 2025. During construction DB HAGAR will be utilizing divers during low tide. Tug WESTAR will be assisting DB HAGAR and monitoring VHF-FM Chan. 13 and 16. Mariners are requested to transit the area with caution. For more details or comments contact Matt Lehmann at 510-529-1583.

Chart 18653 LNM: 50/22

NORTHERN CALIFORNIA-DELTA & RIVERS-AMERICAN RIVER-BRIDGE

CAPITAL CITY HWY (Route 51) BRIDGE-Caltrans is conducting rehabilitation of the bridge until 27 June, 2025. Work will be conducted during daylight hours, 7am to 5:30pm, Monday through Friday, and will include the use of barges, work boats, tugboats, turbidity curtains, and access piers. (See AmRiv_SiltCurtain_BargeLocation.pdf in the enclosure section.). During the workday, barges can be moved for the safety of navigation with one hour notice to the contractor via VHF-FM CH 16 or by cell at 916-532-8208. Mariners should contact the contractor before transiting the bridge to determine location of turbidity curtains. Barges will be unmanned and moored at their work locations overnight. Each corner of each barge will be lighted at night with steady burning red lights. At least 25 feet of horizontal clearance for navigation will be available at all times. Mariners are requested to transit the area with caution. For further information, contact the Coast Guard Bridge Office at 510-437-3461.

Chart 18662 LNM: 23/22

NORTHERN CALIFORNIA-DELTA & RIVERS-GRANT LINE CANAL-BRIDGE

TRACY BLVD BRIDGE-San Joaquin County is requesting to secure the bascule span of the bridge in the closed to navigation position from October 1st to February 28th in either 2023 or 2024 for major bridge rehabilitation. Comments concerning the impact on navigation this request may have can be made to the Coast Guard at D11-SG-M-DPW-Bridges@uscg.mil through September 1, 2023.

Chart 18663 LNM: 32/23

NORTHERN CALIFORNIA-DELTA & RIVERS-MIDDLE RIVER-BRIDGE

BACON ISLAND RD BRIDGE-San Joaquin County is requesting to secure the swing span of the bridge in the closed to navigation position from October 1st to February 28th in either 2023 or 2024 for major bridge rehabilitation. Comments concerning the impact on navigation this request may have can be made to the Coast Guard at D11-SG-M-DPW-Bridges@uscg.mil through September 1, 2023.

Chart 18663 LNM: 32/23

NORTHERN CALIFORNIA-DELTA & RIVERS-NAPA RIVER-BRIDGE

HIGHWAY 37 BRIDGE-The northwest fender in the main navigation span of the bridge is damaged and may not offer adequate protection for vessels passing through the bridge. For further information, contact the Coast Guard Bridge Office at 510-437-3516.

Chart 18654 LNM: 09/23

NORTHERN CALIFORNIA-DELTA & RIVERS-OLD RIVER-BRIDGE

CA ROUTE 4 BRIDGE- Critical bridge rehabilitation is taking place 7am to 3:30pm Monday through Friday. Due to unforeseen circumstances, the drawspan will be secured in the closed-to-navigation position until 30 Nov, 2023. The swing span WILL NOT open for the passage of vessels. A 40'x80' work barge will be employed and tied to one of the bridge piers during this time. Mariners can transit through the construction site at the western most span, between the west bank and Pier 2, or other spans not being occupied by the work barge. For navigational safety, during normal work hours the barge can be moved with 4 hours advance notice by contacting the contractor. At other times, the barge can be moved with 24hrs advance notice. Each corner of the moored barge will be lighted at night with steady burning red lights (See OldRiver_Barge_Lighting_Plan.pdf in the enclosure section). In the closed position, the bridge provides 12' vertical clearance above mean high water. Vessels able to transit the bridge while closed can continue to do so at any time. For conditions at the work site, mariners can contact the contractor at 209-513-7309 or 415-375-5549; or Caltrans at 209-470-8835 or 209-465-0935. For further information, contact the Coast Guard Bridge Office at 510-437-3461.

Chart 18661 LNM: 13/23

NORTHERN CALIFORNIA-DELTA & RIVERS-PETALUMA RIVER-BRIDGE

BLACK POINT RAILROAD BRIDGE- The upstream northeast side fenders are damaged and may not offer adequate protection for the bridge or vessels. Mariners are urged to exercise caution when transiting through the bridge. Estimated time of repairs is unknown. For comments, contact the Coast Guard Bridge Office at (510) 437-3461.

Chart 18654 LNM: 28/23

NORTHERN CALIFORNIA-DELTA & RIVERS-PETALUMA RIVER-BRIDGE

HIGHWAY 37 BRIDGE-The upstream northwest fender on the bridge has been damaged and does not offer adequate protection for vessels or the bridge. The damaged fender encroaches 20-30 feet into the navigation channel. It is unknown if there is further encroachment beneath the waterline. The red light on the upstream portion of the fender and the axis light is extinguished. Estimated time of repair is unknown at this time. Mariners are urged to use caution when transiting the bridge. For a depiction of the damage and exact location, see HWY37FenderDamage.pdf in the enclosure section of this notice. For further information contact the Coast Guard Bridge Office at 510-437-3516.

Chart 18654 LNM: 26/23

NORTHERN CALIFORNIA-DELTA & RIVERS-SACRAMENTO RIVER-BRIDGE

RIO VISTA BRIDGE-Caltrans continues major rehabilitation work on the bridge, primary bridge control replacement. Therefore, from 6 a.m. on 06 March 23 until 6 p.m. on 13 August 23, the lift span of the bridge will open on signal if at least a 4-hour notification is given to the drawtender at 707-374-2134. To commission the primary bridge controls, Caltrans is requesting a temporary change in the operating schedule to the lift span. Therefore, from 6 a.m. on August 28, 2023 through 6 p.m. on January 30, 2024, the lift span of the bridge will open on signal if at least 4-hours notice is given to the draw tender. Any comments concerning this proposed change will be accepted by the Coast Guard through the close of business on August 21, 2023. For further information contact the Coast Guard Bridge Office at 510-437-3516.

Chart 18661 LNM: 09/23

NORTHERN CALIFORNIA-DELTA & RIVERS-SACRAMENTO RIVER-BRIDGE

RIO VISTA BRIDGE-The upriver and downriver green center channel lights on the lift span are not operational. The center span channel lights show red in all positions, even when the span is in the fully open-to-navigation position. The bridgetender will be able to inform any vessel requesting an opening when the lift span is fully open. Estimated time of repair is unknown. For further information contact the Coast Guard Bridge Office at 510-437-3516.

Chart 18661

LNM: 49/22

NORTHERN CALIFORNIA-DELTA & RIVERS-SACRAMENTO RIVER-BRIDGE

REPLACEMENT BUTTE CITY BRIDGE- Replacement bridge construction continues Monday through Friday during daylight hours until 01 Sep, 2023. Installation of a temporary trestle has begun. Once trestle is in place, falsework will be installed. A temporary navigation span during construction will be just west of the existing bridge's pivot pier, 435 feet west of new bridge abutment, and is lighting at night with a green center channel light on the upriver and downriver portion of the trestle. Red lights will mark low steel of the remaining spans of the trestle. A buoy line will be installed, pending Coast Guard approval, to guide vessels through the bridge construction area (see ButteConstructionLighting-BuoyLine.pdf enclosure at the end of this notice). The temporary navigation span will provide at least 32 feet of horizontal clearance and 14 feet of vertical clearance from ordinary high water to low steel of the temporary trestle. For on-scene conditions contact Golden State Bridge, Inc, at 415-720-6577 or 925-260-0403 or Caltrans at 530-941-8272 or 530-682-3931. For further information contact the Coast Guard Bridge Office at 510-437-3461.

LNM: 42/22

NORTHERN CALIFORNIA-DELTA & RIVERS-SAN JOAQUIN RIVER-BRIDGE

CROWS LANDING ROAD BRIDGE- Due to high river waters, construction of the replacement bridge has been suspended. The upstream temporary trestle is still in placed and currently under water. The construction will resume when waters have receded enough to safely conduct work. Mariners are requested to use extreme caution when transiting the work site. For conditions at the project site mariners can contact the contractor at 916-869-8210 or 5590593-5182. For further information contact the Coast Guard Bridge Office at 510-437-3461.

LNM: 36/22

NORTHERN CALIFORNIA-DELTA & RIVERS-TURNER CUT-BRIDGE

ZUCKERMAN BROTHERS BRIDGE-The retractable span of the bridge is secured in the closed-to-navigation position due to mechanical and electrical issues. When closed the bridge provides 16 feet of vertical clearance at mean high water. Vessels able to transit the bridge while closed can continue to do so at any time. Estimated time of repair, unknown. For further information contact the Coast Guard Bridge Office at 510-467-3516.

Chart 18661

LNM: 25/23

NORTHERN CALIFORNIA-DUTCH SLOUGH-SUBMERGED VESSEL

The Coast Guard received a report of a partially submerged recreational vessel on the Dutch Slough at 38-00-43N 121-39-53W and is in approximately 6ft of water and visible above the waterline. At this time there are no plans to attempt to recover the vessel. Mariners are advised to exercise due caution while transiting in the area. For more details or comments contact USCG Sector San Francisco Waterways at 415-399-7443 or SFWaterways@uscg.mil

Chart 18661

LNM: 20/23

NORTHERN CALIFORNIA-GOLF OF THE FARALLONES -BUOY DEPLOYMENT

SoFar Ocean Technologies will be testing a oceanographic buoy system a few miles offshore South Ocean Beach at 37-43-29N 122-33-12W, 37-43-58N 122-33-10W, 37-49-44N 122-33-09W, 37-43-46N 122-32-54W, 37-43-54N 122-32-52W until 15 December, 2023. A 19 Foot C-Dory (CF3571SX) will deploy a yellow buoy FI Y 2.5s to test an oceanographic buoy system. The C-Dory will be monitoring VHF-FM Chan. 16. Mariners are requested to transit the area with caution. For more details or comments contact Colin Browser at 206-972-7830.

Chart 18649

LNM: 26/23

NORTHERN CALIFORNIA-OAKLAND INNER HARBOR-BRIDGE

FRUITVALE AVE RAIL BRIDGE-The lift span of the rail bridge is kept in the partially opened position providing 80 feet of vertical clearance at mean high water. The lift span has been repaired and can be raised to its fully upon position upon request from the Fruitvale Highway bridge operator. When the lift span of the railroad bridge is in the partially open position and the bascule span of the adjacent highway bridge is in the closed position, the lift span will show two red 180-degree center span lights on the upstream and downstream lower edge of the span. When the bascule span of the highway bridge is in the fully opened position, the lift span of the railroad bridge will show two 360-degree green lights, providing a range for the centerline of the channel between both highway and railroad bridges. For further information contact the Coast Guard Bridge Office at 510-437-3516.

Chart 18649

LNM: 25/23

NORTHERN CALIFORNIA-OAKLAND-DREDGING

The Dutra Group will be conducting dredging operations at the Port of Oakland Berths 22-26, 30, 32-33, 35, 37, 55-63, 67-68 from 15 August, 2023 until 30 November, 2023. DB 24, DB BEAVER, tow tugs HEIDI BRUSCO, BECKY T, and PHYLLIS T will be monitoring VHF-FM Chan. 13, 14, and 80. Mariners are requested to transit the area with caution. For more details or comments contact Dennis Salyers at 415-497-5289.

Chart 18650

LNM: 30/23

NORTHERN CALIFORNIA-OAKLAND-DREDGING OPERATIONS

Manson Construction Co. will be conducting dredge operations in the Oakland Inner and Outer Harbor at 37-48-15N 122-20-43W on 7 August, 2023 until 1 January, 2024. Operations will be conducted 24 hours a day, 7 days a week. Dredge DB NJORD, Tugboat PETER M, Tugboat JEFFERY M, Survey Boat WAHOO will be conducting operations and monitoring VHF-FM Chan. 13 & 16. Dredged materials will be disposed of at Montezuma upland disposal site. Mariners are requested to transit the area with caution. For more details or comments contact Alex Koleassar at 510-437-5836.

Chart 18649

LNM: 29/23

NORTHERN CALIFORNIA-OFFSHORE MONTEREY BAY-UNDERWATER OPERATIONS

Reef Check Foundation have deployed underwater equipment offshore Monterey Bay, CA within the following coordinates:

- 36-36-17N 121-52-46W
- 36-36-18N 121-52-49W
- 36-36-15N 121-52-50W

NORTHERN CALIFORNIA-OFFSHORE MONTEREY BAY-UNDERWATER OPERATIONS

36-36-14N 121-52-46W

All equipment will be established until 24 Mar 24. Mariners are requested to transit the area with caution and avoid anchoring within the coordinates listed above. For more details or comments contact Dan Abbot at 510-684-7835.

Chart 18685

LNM: 12/21

NORTHERN CALIFORNIA-OFFSHORE MOSS LANDING-SCIENTIFIC OPERATIONS

The Monterey Bay Aquarium Research Institute (MBARI) will be conducting 24hrs a day autonomous, unmanned maritime vehicle operations of two Liquid Robotics, Inc. Wavegliders (www.liquidr.com), from 09 January, 2023 until 31 December, 2023. (MBARI) will deploy the vehicles in the vicinity of Moss Landing. Operations will be between 36-18-00N 122-58-59W and 37-12-00N 122-58-59W. Wave Glider carries no fuel, lubricants, or hydrocarbons, is wave powered, remotely attended from MBARI moving at speeds of 1kt, and designed to give way or part if encountered by a vessel. It is approximately 8ft by 2ft (surfboard size), yellow/copper in color, with a contact plaque and mast extending 3ft above the water surface supporting a flag. Mariners are requested to transit the area with caution. For more details or comments contact MBARI at 831-775-1700, waveglider@listserv.mbari.org, or Liquid Robotics 24/7 WGO Operations at 888-574-4574, 1-408-636-4205.

Charts: 18680 18685

LNM: 02/23

NORTHERN CALIFORNIA-OLD RIVER-HAZARD TO NAVIGATION

The Coast Guard has received a report of downed powerlines in Old River from Mandeville Island to Webb Tract. The downed powerlines have been cut by PG&E and remain laying on the bottom of Old River. Mariners are recommended to avoid anchoring in the area and transit the area with caution. For details or comments contact Coast Guard Sector San Francisco Waterways at 510-612-9729.

Chart 18661

LNM: 01/23

NORTHERN CALIFORNIA-PAJARO BEACH-BUOY DEPLOYMENT

A Waverider buoy has been deployed at 36-50-17N 122-49-13W near Pajaro Beach. The buoy will be used for wave measurements to aid the Coastal Data Information Program. The wave buoy is a 3-foot diameter sphere with an attached telemetry whip antenna and a nighttime yellow color warning flashing light. The light timing sequence is a series of 5 flashes at 1-second intervals with a period of 20 seconds between each series. Visual range is one kilometer. The buoy is painted yellow and marked "Wave Buoy". For questions, contact James Behrens at 858-534-3032.

Chart 18685

LNM: 31/23

NORTHERN CALIFORNIA-RICHMOND-DREDGING

The Dutra Group will be conducting dredging operations at the Chevron Long Wharf Berths 1, 2, 3, 4, 5, 7, A and Barge way (B-1 and B-2) at 37-55-19N 122-24-40W from 10 August, 2023 until 30 December, 2023. DB 24, DB BEAVER, tow tugs HEIDI L., BECKY T, and PHYLLIS T. All vessels will be monitoring VHF-FM Chan. 13, 14, and 80A. Mariners are requested to transit the area with caution. For more details or comments contact Dennis Salyers at 415-497-5289.

Chart 18653

LNM: 30/23

NORTHERN CALIFORNIA-RICHMOND-DREDGING

The Dutra Group will be conducting dredging operations at Richmond Inner Harbor Channels at position 37-54-13N 122-21-45W from 1 July, 2023 until 30 November, 2023. DB 24, DB BEAVER, disposal tugs HEIDI L BRUSCO, ARTHUR BRUSCO, tender tug BECKY T, PHYLLIS T along with four split hull scows will conduct operations. All vessels will be monitoring VHF-FM Chan. 13, 14, and 80. All dredged material will be disposed of at SF-Deep Ocean Disposal Site or Montezuma Wetlands Restoration Project. Mariners are requested to transit the area with caution. For more details or comments contact Dennis Salyers at 415-497-5289.

Chart 18680

LNM: 26/23

NORTHERN CALIFORNIA-SACRAMENTO RIVER-MERIDIAN- DIRECTIONAL DRILLING CONSTRUCTION OPERATIONS

Snelson companies will be conducting horizontal directional drilling operations below the Sacramento River to install a pipeline crossing near the city of Meridian at 39-08-49 N, 121-55-10 W to 39-08-49N, 121-54-55W. Operations will be conducted between 24 July, 2023 and 1 September, 2023 from 7:00am to 6:00pm, Monday through Friday. Construction equipment will be staged on land above the adjacent shorelines. Mariners are requested to transit the area with caution. For more details or comments contact Alex Rodriguez at 916-223-5419.

Chart 18661

LNM: 17/23

NORTHERN CALIFORNIA-SACRAMENTO RIVER-REDUCED VERTICAL CLEARANCE

Overhead power cables upstream of Sacramento River at 38-03-54N 121-47-09W have a reported reduced vertical clearance to 119.5'.

LNM: 22/16

NORTHERN CALIFORNIA-SACRAMENTO RIVER-SAN JOAQUIN RIVER-GEOTECHNICAL DRILL TESTING

Gregg Drilling and Testing will be conducting Overwater Geotechnical Investigations on the Sacramento River at 38-23-43N 121-30-44W, the San Joaquin River to Mokelumne River between 38-12-48N 121-29-43W and 37-54-20N 121-29-57W. R/V QUIN DELTA will be conducting the operations and monitoring VHF-FM Chan. 13, 14 and 16. Mariners are requested to transit the area with caution. For more details or comments contact Captain Tim O'Donnell at 949-254-5190 or at BEARatSEA@gmail.com.

Charts: 18010 18661 18680

LNM: 36/22

NORTHERN CALIFORNIA-SACRAMENTO RIVER-SUNKEN VESSEL

The Coast Guard received a report of a 35' fully submerged vessel on the Sacramento River approximately 1/2 mile south of the Boathouse Marina In Walnut Grove, CA. Exact position is unknown at this time but is estimated to be in the vicinity of 38-14-51N 121-30-39W and is in approximately 24ft of water. Mariners are advised to exercise due caution while transiting in the area. For more details or comments contact USCG Sector San Francisco Waterways at 415-399-7443 or SFWaterways@uscg.mil

Chart 18662

LNM: 23/23

NORTHERN CALIFORNIA-SAN FRANCISCO BAY-BRIDGE

SAN MATEO/HAYWARD BRIDGE- Caltrans will be conducting dive operations on piers 2 through 27, the eastern high-rise, and piers 500 through 505 and 700 through 705, the causeway portion, 21-25 August, 2023 from 7:00am to 4:30pm The dive vessel, "OFFICIAL BUSINESS" is a 33' aluminum landing craft with heavy equipment on the deck. Diver's umbilical hose may be floating at or near the surface, adjacent to the vessel. All

NORTHERN CALIFORNIA-SAN FRANCISCO BAY-BRIDGE

approaching vessels should contact the vessel on VHF-FM CHAN. 9, 14, & 16 or by cell, 805-748-6011, approximately 30 minutes before transiting the bridge dive site. Extreme caution should be use when passing though the bridge. For further information, mariners can contact the Coast Guard Bridge Office at 510 437-3516.

Chart 18680

LNM: 29/23

NORTHERN CALIFORNIA-SAN FRANCISCO BAY-BRIDGE

SAN MATEO-HAYWARD BRIDGE-Work continues on the causeway portion of the bridge, east of pier 38, 0700 to 1530, Monday through Friday, unit 28 Dec, 2023. Various size barges will be used during the project, the largest being a 100' X 20' flexifloat barge. During the work day, barges will either be spudded down or tied to the bridge piers, no anchors or anchor line will be utilized. After regular working hours the unmanned barge will be left on-site. For the safety of navigation, the barges can be moved with one-hour advance notice. For conditions at the bridge mariners can contact Golden State Bridge, Inc., on VHF-FM Marine Radio Channels 13, 14, and 16 or by cell phone at 707-246-0725, 925-260-2104, or 925-382-7288. For more details or comments contact the Coast Guard Bridge Office at 510-437-3515.

LNM: 20/22

NORTHERN CALIFORNIA-SAN FRANCISCO BAY-BRIDGE

GOLDEN GATE BRIDGE-Four 54' temporary under deck platforms; two, 75' and 425' north of the south tower, and two, 275' and 2,100' south of the north tower have been installed at the bridge. Temporary platforms reduce vertical clearance at the bridge by no more than 14'. The bridge's maintenance travelers are in use during the project and will remain outboard of the furthest north and furthest south temporary platforms. The temporary platforms and maintenance travelers are lighted at night with all-round red lights (see PlatformLighting_GG_Bridge_25May23.pdf at the end of this notice). For navigational safety the maintenance travelers can be moved by contacting the Golden Gate Bridge at 415-923-2220. Work is being conducted Monday through Saturday, 0700-1700 and 2100-0500. For conditions at the bridge, mariners can contact the contractor at 415-716-0384. For more details or comments contact the Coast Guard Bridge Office at 510-437-3516.

Chart 18649

LNM: 22/23

NORTHERN CALIFORNIA-SAN FRANCISCO BAY-BRIDGE

RICHMOND-SAN RAFAEL BRIDGE-Concrete/steel repairs and cleaning of the bridge continues. Work is being conducted Monday through Friday, 0500 to 1700, until 30 November, 2023. Temporary underdeck platforms have been installed from the western shore to pier 33 and between piers 43-46 reducing vertical clearance in each span by three feet. The upstream and downstream lower edge of each temporary platform is lighted at night with steady burning red lights (see R-SR_Bridge_Temp_Platform_Lighting.pdf at the end of this notice.) Two 160' X 50' barges and one 110' X 32' barge are being used to assist in the installation of the platforms and for the blasting and painting. One barge has been secured to pier 8 and will be left on-scene, overnight, unmanned. The outboard corners of the barge at pier 8 is lighted at night with steady red lights. Barge "37" and barge "32" can be contacted on VHF-FM Ch. 16, 13 and 14. At no time will the work impede the east or west navigation spans or their auxiliary spans. For conditions at the bridge, mariners can contact the contractor at 860-904-8787 or 443-847-6286. For further information concerning this project contact the Coast Guard Bridge Office at 510-437-3515.

Chart 18653

LNM: 21/23

NORTHERN CALIFORNIA-SAN FRANCISCO BAY-BRIDGE

SAN MATEO-HAYWARD BRIDGE-The painting of the steel towers continues. Work is being conducted Monday through Friday, 7am to 12am until June 2024. Temporary worker platforms will be installed around the base of piers 2 to 11 and 28-37, reducing horizontal clearance in each of those spans by 6 feet. Temporary underdeck work platforms will be installed in spans 12-18 and 21-27, reducing the vertical clearance by three feet. Tarpaulins will be used as containment around all pier columns. An Andersen under-bridge below-deck worker access vehicle will be used during the installation of the temporary containment and temporary platforms. At no time will in-water work be conducted in the main navigation span between piers 19-20, and mariners should this span at all times during this project. For conditions at the bridge, mariners can contact the contractor at 407-489-5386, 303-579-1383, or 910-279-3365. For further information contact the Coast Guard Bridge Office at 510-437-3515.

LNM: 46/22

NORTHERN CALIFORNIA-SAN FRANCISCO BAY-DETERIORATING CONCRETE PILINGS

Deteriorating concrete pilings above and below the waterline are present in the vicinity of the the south edge of Southampton Shoal Light (LLNR 5480). Mariners are requested to transit the area with caution. For more details or comments contact LT Miranda Brumbaugh at 510-437-2978 or Miranda.E.Brumbaugh@uscg.mil.

Chart 18649

LNM: 23/15

NORTHERN CALIFORNIA-SAN FRANCISCO BAY-SURVEY OPERATIONS

SAILDRONE, INC. is conducting oceanographic survey operations and will operate Unmanned Surface Vehicles called Saildrone Explorers and Saildrone Voyagers until 30 September, 2023. The operations will be conducted 0.8 nm South of General Anchorage 9 in San Francisco Bay and bounded by the following coordinates:

Area 1:

37-44.41N 122-18.26W

37-44.01N 122-17.24W

37-43.23N 122-18.10W

37-44.09N 122-19.03W

Area 2:

37-42.16N 122-18.28W

37-42.43N 122-17.09W

37-41.31N 123-16.26W

37-41.02N 123-17.46W

The Saildrone Explorer is 23 feet long, 16 feet tall, painted orange with a white all- around light on top and marked SAILDRONE. The Saildrone Voyager is 33 feet long, 21 feet tall and painted orange or gray with a tri-color light on top. Saildrones will broadcast AIS and travel at a speed up to 5 knots. Mariners are requested to transit the area with caution. For more details or comments contact Saildrone mission control at missioncontrol@saildrone.com or 510-722-6070.

Chart 18649

LNM: 10/23

NORTHERN CALIFORNIA-SAN JOAQUIN RIVER-CONSTRUCTION

NORTHERN CALIFORNIA-SAN JOAQUIN RIVER-CONSTRUCTION

The City of Stockton will be conducting construction operations on the San Joaquin River to rehabilitate an existing outfall pipe from 5 July, 2023 through 31 October, 2023 at 37-56-06N 121-19-46W. Activities will include vegetation removal, temporary coffer dam installation and removal, excavation and removal of existing structures, installation of a new 60-inch outfall pipe, and placement of rip rap. Mariners are requested to transit the area with caution. For more details or comments contact Joseph Anderson at 916-899-1833.

Chart 18661

LNM: 25/23

NORTHERN CALIFORNIA-SAN JOAQUIN RIVER-MARINE CONSTRUCTION

California Department of Water Resources will be conducting construction of agricultural barriers until 24 August, 2023 at locations: Old River near Tracy barrier 37-53-08N 121-28-56W and Middle River near Tracy Barrier 37-48-37N 121-32-34W. Mariners are requested to transit the area with caution. For more details or comments contact Bill McLaughlin at William.mclaughlin@water.ca.gov.

Chart 18661

LNM: 29/23

NORTHERN CALIFORNIA-SAN LEANDRO BAY-BRIDGE

BAY FARM ISLAND HIGHWAY AND PEDESTRIAN BRIDGES-The pier protection system at the bridges have deteriorated and may not offer adequate protection for the bridges as well as vessels transiting the bridge. Mariners are urged to transit both bridges with caution. The bridge owner is in the process of designing a replacement pier protection system. For more details or comments contact the Coast Guard Bridge Office at 510-437-3514.

Chart 18649

LNM: 31/22

NORTHERN CALIFORNIA-SAN PABLO BAY-BUOY DEPLOYMENT

US Army Corp of Engineers have deployed 3 meteorological recording stations in the San Pablo Bay area in the following coordinates:

38-04-32N 122-20-41W

38-01-51N 122-18-43W

37-52-39N 122-20-22W

For more details or comments contact Justin Yee at 415-503-6788.

Chart 18654

LNM: 31/23

NORTHERN CALIFORNIA-SAN PABLO BAY-TORMEY-MARINE CONSTRUCTION

The Dutra Group will be conducting marine construction to the Phillips 66 San Francisco Refinery located West of the Carquinez Bridge from 03 January, 2023 until 31 December, 2023, during daylight hours. Construction will be bounded by the following coordinates:

38-03-22N 122-15-52W

38-03-25N 122-15-33W

38-03-06N 122-15-34W

38-03-06N 122-15-39W

Crane barge 1, along with a work boat, will be conducting operations and monitoring VHF-FM Chan. 9, 16, and 77. Mariners are requested to transit the area with caution. For more details or comments contact Nicholas Dino at 707-389-0505.

Charts: 18654 18655

LNM: 51/22

NORTHERN CALIFORNIA-SAN RAFAEL CANAL-DREDGING OPERATIONS

Salt River Construction Corporation is conducting dredging operations in the San Rafael Canal at the Marina Vista Improvement Club at position 37-58-17N 122-29-43W from 19 June, 2023 through 30 November, 2023. The self-contained Dredge/dump barges No. 1 and No. 2 and the TB P CAY and TB SPRINGER will be monitoring VHF channels 13, 14, and 78. Mariners are requested to transit the area with caution. For more details or comments contact Rick Moseley at 415-435-1024.

Chart 18653

LNM: 25/23

NORTHERN CALIFORNIA-SHELTER COVE-WRECK

The Coast Guard received a report of a downed single engine white and blue Cessna caravan airplane in the Pacific Ocean approximately 200 yards Northwest of Shelter Cove, CA. The plane is reported to have sank at 40-01-36N 124-04-57 in approximately 30 - 40ft of water. There are no salvage plans at this time. Mariners are advised to exercise due caution while transiting in the area. For more details or comments contact USCG Sector San Francisco Waterways at 415-399-7443 or SFWaterways@uscg.mil.

LNM: 28/23

NORTHERN CALIFORNIA-STOCKTON DEEP WATER SHIP CHANNEL-DREDGE OPERATIONS

Ross Island Sand & Gravel Co. is conducting dredge operations in the Stockton Deep Water Ship Channel 24 hours a day, 7 days a week until 30 August, 2023. Dredge 8 will be dredging in the navigation channel in the vicinity of the Port of Stockton East and West Complexes, starting at River Mile 40.6 at 37-57-09N 121-19-18W to River Mile 32.5 at 37-59-58N 121-20-29W. A submerged dredge pipe will come ashore at 37-56-47N 121-20-29W, 37-58-21N 121-22-33W, and 37-59-40N 121-25-03W. The dredge crew will be monitoring VHF-FM Chan. 13, 16 and 79. Mariners are requested to transit the area with caution. For more details or comments contact Rod Oliva at 503-349-7436.

Chart 18663

LNM: 30/23

NORTHERN CALIFORNIA-STOCKTON-DREDGING

The Dutra Group will be conducting dredging operations at the Port of Stockton at position 37-57-05N 121-19-55W from 7 July, 2023 until 30 September, 2023. DB 24, tow tugs HEIDI BRUSCO, BECKY T, and PHYLLIS T. All vessels will be monitoring VHF-FM Chan. 13, 14, and 80A. All dredged material will be disposed of by off loader at Roberts Island at 37-58-26N 121-22-49W. Mariners are requested to transit the area with caution. For more details or comments contact Chris Milam at 415-218-6739.

Chart 18663

LNM: 27/23

NORTHERN CALIFORNIA-STOCKTON-SHOALING

Shoaling has been reported in the Stockton Deep Water Channel in the vicinity of Stockton Channel LT 48. Due to the depth restrictions San Francisco Bar Pilots have reduced the controlling depth to 28.1'. A Virtual AIS (V-AIS) Aid to Navigation has been placed in position 37°57.1N 121°20.2W to help with safe navigation in the area. For more details or comments contact USCG Sector San Francisco Waterways at 510-612-9729 or SFWaterways@uscg.mil.

NORTHERN CALIFORNIA-STOCKTON-SHOALING

Chart 18663

LNM: 25/23

NORTHERN CALIFORNIA-SUISUN BAY-HAZARD TO NAVIGATION

The Coast Guard has received a report of an uncharted private aid in Suisun Bay between Suisun Bay Channel Lighted Buoy 20 (LLNR 6525) and Suisun Bay Channel Lighted Buoy 22 (LLNR 6540) in approximate position 38° 03'30.3" N 121° 59' 18.9" W. This private aid is a single pile structure with "Danger" markings and may be unlit or displaying a yellow light. Mariners are advised to use caution when transiting the area. For more details or comments contact Coast Guard Sector San Francisco Waterways at 510-612-9729.

Chart 18656

LNM: 04/23

NORTHERN CALIFORNIA-SUISUN BAY-MONTEZUMA SLOUGH-MARINE CONSTRUCTION

The California Department of Water Resources advises that will be installing flashboards at the Suisun Marsh salinity control structure, located 2.2 nautical miles from the easterly end of Montezuma Slough at 38-05-36N 121-53-07W on 14 August, 2023 and will begin operating the appurtenant boat lock. Passage in either direction can only be accomplished using the boat lock. The boat lock is expected to be operated through 31 May, 2024, contingent on hydrologic conditions, during the hours of 7:00am to 5:00pm, unless informed otherwise. Mariners are requested to transit the area with caution. For more details or comments contact Ian Uecker at 916-574-2991.

Chart 18656

LNM: 29/23

NORTHERN CALIFORNIA-VENICE ISLAND-CONSTRUCTION OPERATIONS

The Dutra Group will be conducting construction at Venice Island from 21 March, 2023 until 31 October, 2023 during daylight hours to complete levee rehabilitation. Two crane barges approximately 40'x120' will be anchored along North Mokelumne River between Tyler Island and Staten Island. TM 20 and two 40'x80' flexi barges secured together along with a work boat and two tugboats will be conducting operations. All vessels will be monitoring VHF-FM Chan. 9, 16, and 68A. Mariners are requested to transit the area with caution. For more details or comments contact Scott Brooks at 707-333-5209.

Charts: 18661 18662

LNM: 12/23

NORTHERN CALIFORNIA-MONTEREY BAY-BUOY DEPLOYMENT

University of California Santa Barbara has deployed research Wave Buoy Station CDIP 266 in position 36-50-41N 121-49-28W with characteristics of a flashing yellow light every 5 seconds. Mariners are requested to transit the area with caution. For more details or comments contact University of California Santa Barbara at 858-534-3032 or admin@cdip.ucsb.edu.

Chart 18685

LNM: 17/23

NORTHERN CALIFORNIA-MONTEREY POINT-BUOY DEPLOYMENT

US Naval Postgraduate School will be deploying 4 white lit research buoys with characteristics of a flashing yellow light every 2.5 seconds on 19 June, 2023 until 08 December, 2023 in the following positions:

36-36-28N 121-59-04W

36-36-22N 121-58-25W

36-36-21N 121-58-05W

36-37-26N 121-54-21W

R/V SANDCRAB will be conducting the operations and monitoring VHF-FM Chan. 16. Mariners are requested to transit the area with caution. For more details or comments contact Dr. Jamie MacMahan at 381-588-8727 or jhmacmah@nps.edu.

Chart 18685

LNM: 24/23

SAN DIEGO-OCEANOGRAPHIC SURVEY-OCEAN MONITORING

The City of San Diego Marine Biology Lab is conducting year-round ocean monitoring sampling in the vicinity of the South Bay Ocean Outfall and Point Loma Ocean Outfall. The Ocean Monitoring Program conducts trawl sampling, benthic sampling with a double Van Veen sediment grab, vertical CTD casts and horizontal tows with an undulating underwater vehicle, ROV surveys and multiple moorings are deployed in the region below. Ocean sampling will be conducted in an area bound by the following coordinates:

32-31-54N 117-11-11W

32-32-10N 117-11-57W

32-32-03N 117-12-06W

32-32-33N 117-11-56W

32-40-10N 117-19-22W

32-40-04N 117-19-34W

32-39-37N 117-19-32W

32-39-56N 117-19-39W

32-40-10N 117-16-55W

The M/V OCEANUS and M/V MONITOR III when in the area will monitor VHF-FM Chan. 16. Mariners are requested to transit the area with caution. For more details or comments contact Adriano Feit at 619-758-2377 or 858-882-7055.

Charts: 18765 18772

LNM: 43/21

SOUTHERN CALIFORNIA - SAN DIEGO- SURFACE OPERATIONS

The US Navy will be conducting operations 15-16 August, 2023 5 Nautical Miles west of Point Loma. Research operations will be conducted measuring environmental data from a research vessel, the RHIBAYE and will monitor VHF-FM CHAN. 16. Mariners are requested to transit the area with caution.

Chart 18740

LNM: 32/23

SOUTHERN CALIFORNIA - SANTA BARBARA CHANNEL- MARINE EVENT

Friendship Paddle will sponsor a paddle board event involving 100 participants paddling from Goleta Pier eastbound to Leadbetter Beach within 1 nautical mile of the shoreline from 12:00pm-4:00pm on 19 August, 2023. There will be 20 support vessels assisting the paddlers. Mariners are requested to transit the area with caution. For more details or comments contact Sean Hastings at 805-705-1790.

Charts: 18725 18741

LNM: 31/23

SOUTHERN CALIFORNIA - BALBOA MARINA-MARINE CONSTRUCTION

SOUTHERN CALIFORNIA – BALBOA MARINA-MARINE CONSTRUCTION

Power Engineering Construction Co. will be performing dredging and pile driving operations from 12 June, 2023 through 15 December, 2023 in the vicinity of Balboa Marina, Newport Beach. Work is being conducted Monday through Friday 7:30am to 6:00pm at 33-36-57N 117-54-19W. Operations will be conducted with a long-reach excavator and an 80'x80'x7' derrick barge. The excavator will be staged on land and extend 20' into the bay. The barge will be spudded down and will not exceed the project limits, about 350' into the bay. All vessels and equipment on site will be monitoring VHF-FM CHAN. 67/16. Mariners are advised to use caution when transiting the area. For further comments or details contact Matt Dill at (510) 610-4633.

Chart 18751

LNM: 22/23

SOUTHERN CALIFORNIA – CAMP PENDLETON – TEMPORARY BUOYS

The Marine Corps Warfighting Laboratory has deployed 4 temporary buoys just outside of the surf zone in the vicinity of Camp Pendleton.

Approximate positions:

33-16.04N, 117-27.06W

33-17.23N, 117-28.04W

33-17.46N, 117-28.26W

33-17.63N, 117-28.43W

The buoys will be in place until 15 August, 2023. Mariners are requested to transit the area with caution. For questions, contact Peter Young at 757-761-0395.

Chart 18774

LNM: 09/23

SOUTHERN CALIFORNIA- ANAHEIM BAY- TEMPORARY BUOYS

The U.S. Coast Guard has established temporary Buoys in Anaheim Bay at the following locations.

Temp Buoy #9- Fl G 4s

Position: 33-43-927N 118-05-981W

Temp Buoy #10 Q R

Position: 33-43-963N 118-05-818

Temp Buoy #11 FL G 4s

Position: 33-44-077N 118-05-862W

Temp Buoy #13 Fl G 4s

Position: 33-44-211N 118-05-799W

For more details or comments contact LT Miranda Brumbaugh at 510-437-2978 or Miranda.E.Brumbaugh@uscg.mil.

Charts: 18746 18749

LNM: 29/22

SOUTHERN CALIFORNIA- NEWPORT BEACH- MARINE CONSTRUCTION

Coastal Permit Specialist will conduct marine construction in Newport Beach from 4 September, 2023 until 8 September, 2023 at 33-37-09N 117-56-04W. A small 17 ft. Barge will conduct removal and replacement of the existing 180 sq. ft. floating dock. The new orientation to be perpendicular to the seawall. Removal and Replacement of the existing gangway and upgraded to 24 x 3 ft. to meet current city code. Removal of existing pier platform and replaced with new 60 sq. ft. pier platform. Reuse of existing 14" square concrete marina guide piling in different locations and removal and replacement of existing 14" square T-pile. Mariners are requested to transit the area with caution. For more details or comments contact Ben Swift at 949-285-9470.

LNM: 30/23

SOUTHERN CALIFORNIA- REDONDO BEACH – MARINE CONSTRUCTION

Bellingham Marine Industries will be conducting marine construction and dive operations replacing Redondo Beach Fire station Docks and Public Sewer Pump out Dock in Redondo Beach, California at 33-50-48N, 118-23-55W from 16 May, 2023 until 25 August, 2023 during daylight hours, Monday through Friday from 6:00am to 5:00pm. Barge operation is anticipated in May and will be a 60'x70' crane barge. The site superintendent will be on scene monitoring VHF-FM Chan. 72. Mariners are requested to transit the area with caution. For further comments or details contact Chad Lucas 707-430-3565

Chart 18740

LNM: 20/23

SOUTHERN CALIFORNIA- SANTA BARBARA-DIVE OPERATIONS

IDE Americas, Inc. will be conducting dive operations on the Charles E. Meyer Desalination Plant submerged infrastructure components including the emergency replacement of one of the seawater intake pumps as part of the Plant's operations and maintenance at 34-24-48N 119-40-76W from 4 August, 2023 until 11 August, 2023. Diving operations will involve commercial divers using hand tools and small pneumatic tools to access the intake pump structure, remove biological growth and debris, and remove and replace one of the existing intake pumps into one of two seawater intake pump structures lying on the seafloor. The inspection and maintenance dives will require a team of four divers to be supported by the S/V DANNT C that is homeported in Santa Barbara Harbor and is 77 feet in length and will be monitoring VHF-FM CHAN. 16. The vessel will anchor at a depth of approximately 35 feet just east of Stearns Wharf within the pre-approved anchoring plan locations located within the temporary mooring area in Santa Barbara. A separate contingency of vessels 18 to 32-feet in length will provide support for anchor tending, required mitigation monitoring efforts, and transport of personnel from Santa Barbara Harbor. Mariners are requested to transit the area with caution. For more details or information contact Josh Capito at 760-277-1558.

Chart 18725

LNM: 31/23

SOUTHERN CALIFORNIA-CATALINA ISLAND-BUOY REMOVAL

The Marine BioEnergy Kelp Research Buoy, in position 33-28-07N 118-29-25W, in the vicinity of Catalina Island has been temporarily removed for maintenance. Mariners are requested to transit the area with caution. For more details or comments, contact Mike Salsman at 510-437-2984.

Chart 18757

LNM: 20/23

SOUTHERN CALIFORNIA-CHANNEL ISLANDS HARBOR-BRIDGES

CHANNEL ISLANDS BLVD EAST (MANDALAY BAY) & CHANNEL ISLANDS BLVD WEST (EDISON CANAL) BRIDGES-Rehabilitation of the bridges will take place 7 am to 3:30 pm, Monday through Friday, 15 February, 2023 through 15 August, 2023. No in-water work will be conducted at the east bridge. At the west bridge two 5' X 20' X 10' flexi-floats will be employed and will be secured with two 35' spuds. The flexi-floats will reduce horizontal clearance in the channel by no more than 10 feet. 8' X 11'cofferdams will encase the bridge columns at each bent. Only one channel of the west bridge will be impacted at any one time. The ends of the cofferdams and each corner of each flexi-floats will be lighted at night with

SOUTHERN CALIFORNIA-CHANNEL ISLANDS HARBOR-BRIDGES

steady burning red lights (See Channel_Islands_Bridge_Rehab.pdf at the end of this article.) For the safety of navigation, the flexi-floats can be moved with a 30-minute advance notice to the contractor. Mariners are requested to approach the west bridge with caution and avoid the span of the bridge where work is being conducted. For further information contact the Coast Guard Bridge Office at 510-437-3516.

Chart 18725

LNM: 06/23

SOUTHERN CALIFORNIA-DELTA-GEOTECHNICAL DRILL TESTING

Gregg Drilling and Testing will be conducting drilling operations from 15 August, 2023 until 12 September, 2023 in the vicinity of Whiskey Slough at 37-57-25N 121-27-21W, White Slough at 38-05-00N 121-26-18W and Mokelumne River at 38-15-25N 121-27-24W. The R/V QUIN DELTA will be on scene and monitoring VHF-FM Chan. 13 and 16. Mariners are requested to transit the area with caution. For more details or comments contact Captain Tim O'Donnell at 949-254-5190 or BEARatSEA@gmail.com.

Charts: 18656 18661

LNM: 32/23

SOUTHERN CALIFORNIA-EL SEGUNDO-BUOY REPLACEMENT

Chevron has replaced a weather buoy in position 33-54-30N 118-27-09W with a similar yellow buoy with characteristics of a flashing yellow light every 3 seconds. Mariners are requested to transit the area with caution. For more details or comments contact Chevron at 310-615-5735 or cscsmtsmm@chevron.com.

Chart 18744

LNM: 17/23

SOUTHERN CALIFORNIA-GOLETA-DIVING OPERATIONS

Aqueos will be conducting diving/ROV operations from 10 August, 2023, until 17 August, 2023 offshore Goleta at 34-23-02N 119-53-22W, 34-23-03N 119-53-21W 34-24-29N 119-59-34W and 34-22-47N 119-50-29W. Operations will be conducted during daylight hours. The 76' LOA, black hull red highlights and white superstructure; typical Utility Boat configuration with deck-mounted crane will be monitoring VHF-FM 16. Mariners are requested to transit the area with caution. For more details or comments contact Jason Smith at 805-205-3156.

Chart 18725

LNM: 31/23

SOUTHERN CALIFORNIA-HUNTINGTON BEACH BEACH-MARINE CONSTRUCTION

Coastal Permit Specialist will conduct marine construction in Huntington Beach, CA from 14 July, 2023 until 11 August, 2023. Construction will take place at 33-43-31N 118-03-44W. A 35' Baile J&J Boatworks will be installing 50'x5' cantilever deck and increasing a single 95'x5' cantilever deck. Mariners are requested to transit the area with caution. For more details or comments contact Curtis Buchanan at 714-393-5553.

Chart 18749

LNM: 27/23

SOUTHERN CALIFORNIA-HUNTINGTON BEACH-UNDERWATER PIPELINE INSPECTION

Aqueos will be conducting underwater pipeline inspection work on 16 August, 2023 until 25 August, 2023 at 33-35-02N 118-07-49W. The operations will include the vessel using an underwater remote operated vehicle (ROV) "flying" the pipeline to complete the inspections indicated below. The vessel will be working in a "live boat mode" not anchored. The vessel IS A 100' LOA, black hull and white superstructure and will be following the generally during daylight hours and will be monitoring VHF-FM CHAN. 16. Mariners are requested to transit the area with caution. For more details or comments contact Jason Smith at 805-676-4330.

Chart 18746

LNM: 31/23

SOUTHERN CALIFORNIA-LONG BEACH HARBOR-MARINE CONSTRUCTION

Dutra Construction Company is conducting marine construction in the Port of Long Beach, CA at the Carnival Cruise Lines Wharf H, 7 days a week until November, 2023. The crane barge MORTY along with several smaller boats and a material barge will be monitoring VHF-FM CHAN. 13, 16 & 82. Mariners are requested to transit the area with caution. For more details or comments contact Andrew Hunt at 415-837-6640.

Chart 18751

LNM: 32/23

SOUTHERN CALIFORNIA-LOS ANGELES/LONG BEACH HARBOR-BRIDGE

PIER 400 BRIDGE MODIFICATION- Construction is taking place Monday through Friday, 6am to 4pm, until 30 Sep, 2023. All in-water equipment and temporary structures will occur within the two existing bridges, and will not impact marine traffic in the area. For conditions at the work site, contact 714-536-9553 or 510-846-0325. For further information contact the Coast Guard Bridge Office at 510-437-3461.

Chart 18749

LNM: 26/22

SOUTHERN CALIFORNIA-LOS ANGELES/LONG BEACH HARBOR-BRIDGE

VINCENT THOMAS BRIDGE-A 180 ft temporary platform, used to paint the underside of the bridge, continues to move west from the east tower. The platform reduces vertical clearance of the bridge by 5.5 ft. It is anticipated the temporary platform will arrive at the east edge of the shipping channel in summer of 2024. The upstream and downstream corners and every 50' along the upstream and downstream side of the platform is lighted at night with steady burning red lights (see V_Thomas_Platform_Lighting1.pdf at the end of this notice). Work will take place during daylight hours, Monday through Friday. For conditions at the bridge mariners can contact 213-479-4138, 213-479-1144 or 310-261-9552. For more details or comments contact the Coast Guard Bridge Office at 510-437-3516.

Chart 18749

LNM: 30/22

SOUTHERN CALIFORNIA-NATIONAL CITY-MARINE CONSTRUCTION

R. E Staitte will be conducting dredging operations and marine construction at the Austal USA facility located in National City, California at 32-39-29N 117-07-07W from 1 April, 2023 until 30 September, 2023. DB Point Loma, DB William F, DB Palomar and RES 180 along with multiple scows a survey boat and various deck barges will conduct operations. All vessels will be monitoring VHF-FM Chan. 16. All dredged material will be disposed of at LA-5 ocean disposal site. An Exclusion Zone (EZ) will be established for purposes of protection from munitions and explosives of concern (MEC) that may be disturbed within the project area. The EZ area will extend into the water in an arc and the size flex within the project area as the project progresses depending on the work activity. Work hours for the project are anticipated to be 24/7 during high production times. The EZ will extend into the water and may impact marine vessel traffic, swimmers and divers. Only authorized personnel will be allowed into the EZ. Mariners are requested to transit the area with caution. For more details or comments contact Erick Myers at 619-233-0178.

Chart 18773

LNM: 12/23

SOUTHERN CALIFORNIA-NEWPORT BEACH-MARINE CONSTRUCTION

SOUTHERN CALIFORNIA-NEWPORT BEACH-MARINE CONSTRUCTION

Coastal Permit Specialist will conduct marine construction in Newport Beach, CA from 01 August, 2023 until 31 August, 2023. Construction will take place at 33-36-48N 117-54-17W. A 17' barge will be replacing the existing dock, gangway, and marina guide pilings. Mariners are requested to transit the area with caution. For more details or comments contact Ben Swift at 949-285-9470.

Chart 18746

LNLM: 26/23

SOUTHERN CALIFORNIA-OCEANSIDE-MARINE EVENT

The Pao Pao 9-Man Outrigger Canoe Race will be taking place on 26 August, 2023 from 4:00am to 5:00pm at 33-09-13N 117-29-07W. The event will involve approximately 95 participants racing on a 23-mile course in and offshore of Oceanside Harbor. Mariners are requested to transit the area with caution. For more details or comments, contact Jill Prichard at 760-960-6460.

LNLM: 31/23

SOUTHERN CALIFORNIA-OFFSHORE-HAZARDOUS OPERATIONS

There will be hazardous operations conducted in the Fleet Training Area Hot (FLETA HOT) until 1 January, 2024. Mariners are requested to transit the area with caution. For more details or comments contact Darrel Rumsey at 619-545-1744

A. HAZARDOUS OPERATIONS REQUEST (FLETA HOT):

(1) IN AREA BOUNDED BY:

- 32-33-00N 118-25-00W
- 32-35-00N 118-16-00W
- 32-35-00N 117-4-000W
- 31-55-00N 117-40-00W
- 31-55-00N 118-25-00W
- 32-33-00N 118-25-00W

TO POINT OF ORIGIN.

B. HAZARDOUS OPERATIONS REQUEST (SOAR):

(1) IN AREA BOUNDED BY:

- 32-52-42N 119-11-58W
- 33-08-04N 118-52-05W
- 33-08-04N 118-46-02W
- 33-03-52N 118-41-48W
- 33-02-32N 118-43-33W
- 32-58-53N 118-43-31W
- 32-47-40N 118-32-21W
- 32-36-55N 118-45-00W
- 32-36-55N 118-56-57W

TO POINT OF ORIGIN.

C. HAZARDOUS OPS REQUEST (SHOBA WITH BOTH EXTENSIONS):

(1) AREA BOUNDED BY FOLLOWING COORDS:

- 32-55-00 N 118-25-00 W
- 32-55-00 N 118-15-00 W
- 32-40-00 N 118-15-00 W
- 32-40-00 N 118-35-00 W
- 32-45-00 N 118-35-00 W

TO POINT OF ORIGIN.

Charts: 18700 18720 18740

LNLM: 19/23

SOUTHERN CALIFORNIA-OXNARD-DOCK REPLACEMENT

Anchor QEA is conducting a dock replacement for Anacapa Isle Marina of Docks A through E, & G in Channel Islands Harbor, Oxnard, California at 34-10-22N, 119-13-37W from 1 June, 2023 until 13 March, 2024. Vessels will be monitoring VHF-FM Chan. 16. Mariners are requested to transit the area with caution. For more details or comments contact Armando Alonso at 805-814-4010.

Chart 18725

LNLM: 20/23

SOUTHERN CALIFORNIA-POINT CONCEPTION-NOAA BUOY DEPLOYMENT

NOAA's Pacific Marine Environmental Laboratory deployed a buoy 11 nautical miles due west of Point Conception, CA. at 34-27-31N 120-41-10W. The buoy named Harvest 22 has a yellow top with gray sides and a flashing amber light every 4 seconds. Mariners are advised to use due caution when transiting this area. For more details or comments contact Cabot Zucker at 425-477-9554.

LNLM: 13/22

SOUTHERN CALIFORNIA-PORT SAN LUIS-MARINE CONSTRUCTION

Connolly-Pacific will conduct marine construction to the Port San Luis breakwater from 6:30am to 6:30pm from 10 April, 2023 until 31 December, 2023. DB LONG BEACH will use anchors to position itself along the breakwater. These anchor positions will be marked by round white anchor cans and FI W 2s. Tug PATCONA and Tug LARCONA will be assisting DB LONG BEACH. All vessels will be monitoring VHF-FM Chan. 13, 16, and 79a. Mariners are requested to transit the area with caution. For more details or comments contact Tobey Walker at 562-577-0730 or John Riley at 562-577-3602.

Chart 18720

LNLM: 15/23

SOUTHERN CALIFORNIA-SAN DIEGO BAY-BRIDGE

CORONADO BAY BRIDGE MAINTENANCE-Scaffolding installed between piers 11-12, 12-13, and 13-14, reduces vertical clearance by more than 8'. The upstream and downstream lower edges of the scaffolding are lighted at night with red lights. For more details or comments contact the Coast Guard Bridge Office at 510-437-3461.

Charts: 18772 18773

LNLM: 13/20

SOUTHERN CALIFORNIA-SAN DIEGO BAY-MARINE EVENT

The Cortez Racing Association (CRA) will be sponsoring the CRA Sharp Hospice Care Regatta on 26 August, 2023 from 10:00am to 5:00pm. The

SOUTHERN CALIFORNIA-SAN DIEGO BAY-MARINE EVENT

regatta will consist of 70 sailboats on a course starting in North San Diego Bay and finishing near Glorietta Bay, south of the Coronado Bridge. Mariners are requested to transit the area with caution. For more details or comments, contact Dale Greaney at 760-470-1730.

Chart 18765

LNM: 26/23

SOUTHERN CALIFORNIA-SAN DIEGO BAY-MARINE EVENT

KOZ events will be sponsoring the San Diego Triathlon Classic on 9 September, 2023 from 6:00am to 9:00am. The event will involve approximately 1000 participants swimming in waves on a closed course near Spanish Landing Park. Mariners are requested to transit the area with caution. For more details or comments, contact Tobias Panek at 858-255-9709.

LNM: 31/23

SOUTHERN CALIFORNIA-SAN DIEGO-MARINE EVENT

The San Diego Yacht Club will be sponsoring the One Design Weekend Monthly Series on various dates throughout CY2023. The event is scheduled for 21-22 January, 11-12 February, 29-30 April, 13 May, 10-11 June, 8-9 July, 12-13 August, 23-24 September, 14-15 October, 11-12 November, and 9 December, 2023. The events will involve approximately 30 sailing vessels racing on a course in Coronado Roads, CA. The course will be centered at approximately 32-39-30N 117-11-40W and will extend southwest up to 1.2 nm. Mariners are requested to transit the area with caution. For more details or comments contact Jeff Johnson at 619-933-9922.

Chart 18773

LNM: 03/23

SOUTHERN CALIFORNIA-SAN LUIS OBISPO BAY-PORT SAN LUIS HARBOR-DREDGE OPERATIONS

The Port of San Luis Harbor District will be conducting dredge operations at 35-10-25N 120-45-15W from 1 March, 2023 until 31 August, 2023 during daylight hours. Dredged materials will be disposed of at West Bluff Beach and Fisherman's Beach. Mariners are requested to transit the area with caution. For more details or comments contact Natalie Teeter at 805-595-5431.

Charts: 18700 18703

LNM: 09/23

SOUTHERN CALIFORNIA-SAN MATEO PT. -BUOY DEPLOYMENT

A Waverider buoy has been deployed 5 NM southwest of San Mateo Pt. in position 32-20-11N 117-39-31W. The buoy was deployed on 26 May, 2023. The buoy is operated by Scripps Institute of Oceanography and is 3-foot diameter sphere with an attached telemetry whip antenna and a nighttime yellow color warning flashing light. The light timing sequence is a series of 5 flashes at 1-second intervals with a period of 20 seconds between each series. Visual range is one kilometer. The buoy is painted yellow and marked "Wave Buoy" with the phone number 858-534-3032. For further comments or details contact Vicki Kellis at 858-534-3032.

Chart 18774

LNM: 23/23

SOUTHERN CALIFORNIA-SAN NICHOLAS ISLAND-ATMOSPHERIC BUOY DEPLOYMENT

Naval Air Systems Command has deployed an atmospheric sampling buoy 1.5 miles Northeast of San Nicolas Island at 33-18-00N 119-30-55W. The yellow buoy Fl Y 3s, is 6 feet above the waterline and 2 feet in diameter. Mariners are requested to transit the area with caution. For more details or comments contact Kyle Edwards at 805-989-0672.

Chart 18720

LNM: 39/22

SOUTHERN CALIFORNIA-SANTA BARBARA-AQUACULTURE ESTABLISHMENT

Ocean Rainforest will be establishing an Aquafarm, starting on 30 March, 2023, located located 4.3 NM South of Santa Barbara. The site is bound within four yellow boundary marker buoys with a flashing yellow light every 2 seconds (Fl Y2s) in the following positions:

- 34-19-58.53N 119-42-45.72W
- 34-20-10.12N 119-42-45.72W
- 34-20-11.23N 119-42-07.24W
- 34-19-59.64N 119-42-07.92W

In line with the outer boundary buoys are small unlit floats that are marking the anchors associated with the Aquaculture area, the total buoys marking the anchors are 12 on the long axis of each side and 2 between the corner buoys on the short axis. Within the boundary markers will be 188 buoys/floats, see Enclosure AQUACULTURE ESTABLISHMENT.pdf enclosure below. The interior buoys of the aquaculture are in the shape of a rectangle with the outer edge marked with yellow buoys, every other buoy has a flashing yellow light flashing every 2 seconds (Fl Y2s). Within the rectangle are 135 small unlit floats marking the cultivation lines. Mariners are advised to remain clear of this area as entanglement with associated equipment may occur. Vessel DANNY C will be conducting the deployment and monitoring VHF-FM Chan. 7 and 16. For more details or comments contact Ocean Rainforest Inc at 805-722-9601 or eliza@oceanrainforest.com.

Charts: 18720 18725

LNM: 11/23

SOUTHERN CALIFORNIA-SANTA BARBARA-MARINE CONSTRUCTION

California State Lands Commission will be conducting marine construction and dive work from 13 August, 2023 until 26 August, 2023 at 34-25-03N 119-35-58W. Vessels will utilize the following anchor positions:

- 34-25-06N 119-35-59W
- 34-25-04N 119-35-53W
- 34-24-55N 119-36-09W
- 34-24-51N 119-35-54W

DB SALTE VERDE, SUPPORT TUG BERNADINE C and SUPPORT TUG SARAH C will be monitoring VHF-FM Chan. 01 and 16. Mariners are requested to transit the area with caution. For more details or comments contact Michelle Pasini at 714-277-2505.

Chart 18725

LNM: 31/23

SOUTHERN CALIFORNIA-VANDENBERG AFB-HAZARDOUS OPERATIONS

Hazardous operations will be conducted from Vandenberg AFB, CA for Western Range 2328 from 11:22pm on 16 August, 2023 until 3:26am on 21 August, 2023. Hazardous operation areas are bounded by the following coordinates:

- Hazard area A:
- 34-40-00N 120-39-00W
- 34-40-00N 120-22-00W
- 30-50-00N 117-23-00W
- 30-46-00N 117-30-00W

SOUTHERN CALIFORNIA-VANDENBERG AFB-HAZARDOUS OPERATIONS

34-33-00N 120-44-00W
34-40-00N 120-39-00W (CLOSING THE FIRST POINT)
Hazard area B:
30-33-00N 117-11-00W
29-42-00N 116-09-00W
29-20-00N 116-04-00W
29-02-00N 116-38-00W
29-21-00N 116-52-00W
30-31-00N 117-14-00W
30-33-00N 117-11-00W (CLOSING THE FIRST POINT)

Mariners are advised to remain clear of these areas for the duration of operations. For more details or comments contact Vandenberg AFB at 805-606-8825 or on VHF-FM Chan. 06 or 16.

Charts: 18700 18720 18740

LNM: 32/23

SOUTHERN CALIFORNIA-WILMINGTON-PIER CONSTRUCTION

Jilk Heavy Construction Co. will be conducting pier construction at the Marine Oil Terminal Berth 167-169 in Willmington, CA. Operations will be 14 August, 2023 until 07 November, 2023 during daylight hours, Monday through Friday. Jilk Heavy Construction's 100'x110' Flexi-float mounted barge crane will be located at various points along berths 168-169 and berths 192-193 and will be moored with the use of spods. Alongside will be several 18' work skiffs at 33-45-20N 118-16-04W. All floating and land-based equipment will be monitoring VHF-FM Chan. 16. Mariners are requested to transit the area with caution. For more details or comments contact Joe Salgado at 310-505-0142 or Joe Carrico at 310-505-7346.

Charts: 18749 18751

LNM: 27/23

SECTION VIII - LIGHT LIST CORRECTIONS

An Asterisk *, indicates the column in which a correction has been made to new information

(1) No.	(2) Name and Location	(3) Position	(4) Characteristic	(5) Height	(6) Range	(7) Structure	(8) Remarks
------------	--------------------------	-----------------	-----------------------	---------------	--------------	------------------	----------------

None

PUBLICATION CORRECTIONS

None

ENCLOSURES

REPORT OF DELAY AT DRAWBRIDGE

[Delay_Report_11-2017.pdf](#)

Use link above to Report a Delay at a Drawbridge.

LNM: 06/07

CALIFORNIA - SANTA BARBARA TSS AND CHANNEL ISLANDS ATBA GRAPHIC

[new-protections.jpg](#)

See link above.

LNM: 21/23

NORTHERN CALIFORNIA-DELTA & RIVERS-AMERICAN RIVER-BRIDGE

[AmRiv_SiltCurtain_BargeLocation.pdf](#)

CAPITAL CITY HWY (ROUTE 51) BRIDGE-See link above for barge and silt curtain locations.

LNM: 22/22

NORTHERN CALIFORNIA-SAN FRANCISCO BAY-BRIDGE

[PlatformLighting_GG_Bridge_25May23.pdf](#)

GOLDEN GATE BRIDGE-Temporary Platform Location and Lighting revised 25 May, 2023.

LNM: 22/23

NORTHERN CALIFORNIA-SAN FRANCISCO BAY-BRIDGE

[R-SR_Bridge_Temp_Platform_Lighting.pdf](#)

RICHMOND-SAN RAFAEL BRIDGE- See link above for temporary underdeck platform lighting for concrete and steel repairs.

LNM: 48/21

NORTHERN CALIFORNIA-DELTA & RIVERS-SACRAMENTO RIVER-BRIDGE

[ButteConstructionLightng-BuoyLine.pdf](#)

REPLACEMENT BUTTE CITY BRIDGE-See link above for temporary construction trestle and lighting and proposed buoy line..
LNM: 36/22

NORTHERN CALIFORNIA-DELTA & RIVERS-SAN JOAQUIN RIVER-BRIDGE

[TemporaryBridge_FalseworkLighting.pdf](#)

CROWS LANDING REPLACEMENT-See link above for temporary falsework, temporary bridge, the temporary navigation channel during construction with navigation lighting plan.

LNM: 36/22

NEVADA-ARIZONA-COLORADO RIVER-BRIDGE

[RockAccessPad_Lighting02.pdf](#)

NEW LAUGHLIN-BULLHEAD CITY BRIDGE-See link above for temporary rock access pad and temporary bridge lighting.

LNM: 15/23

NORTHERN CALIFORNIA-DELTA & RIVERS-OLD RIVER-BRIDGE

[OldRiver_Barge_Lighting_Plan.pdf](#)

CA ROUTE 4 BRIDGE-See link above for typical barge lighting and location during rehabilitation project.

LNM: 44/22

NORTHERN CALIFORNIA-MONTEREY BAY-SURVEY OPERATIONS

[MONTEREY BAY-SURVEY OPERATIONS.pdf](#)

see link above.

LNM: 04/23

ARIZONA/CALIFORNIA-COLORADO RIVER-BRIDGE

[I-8_Trestle_Lighting.pdf](#)

INTERSTATE 8 BRIDGE (YUMA, AZ)-See link above for temporary trestle lighting.

LNM: 7/23

SOUTHERN CALIFORNIA-SANTA BARBARA-AQUACULTURE ESTABLISHMENT

[AQUACULTURE ESTABLISHMENT.png](#)

see link above.

LNM: 03/23

SOUTHERN CALIFORNIA-CHANNEL ISLANDS HARBOR-BRIDGES

[Channel_Islands_Bridge_Rehab.pdf](#)

CHANNEL ISLANDS BLVD EAST (MANDALAY BAY) & CHANNEL ISLANDS BLVD WEST (EDISON CANAL) BRIDGES-Lighting diagram for cofferdams and flexi-floats.

LNM: 06/23

NORTHERN CALIFORNIA-DELTA & RIVERS-PETALUMA RIVER-BRIDGE

[HWY37FenderDamage.pdf](#)

HIGHWAY 37 BRIDGE-Open link above for location and depiction of fender damage.

LNM: 26/23

CALIFORNIA - SANTA BARBARA - TRAFFIC SEPARATION (TSS) EXTENDED

[TSS_Circ.78.pdf](#)

See link above.

LNM: 21/23

CALIFORNIA - CALIFORNIA COAST-VOLUNTARY VESSEL SPEED REDUCTION

[2023 NOAA USCG EPA VSR2.pdf](#)

See link above.

Charts: 18468 18640 18700 18720 18740

LNM: 20/23

SOUTHERN CALIFORNIA - CHANNEL ISLANDS - AREA TO BE AVOIDED (ATBA) ENLARGED

[ATBA_Circ.342.pdf](#)

See link above.

LNM: 21/23

SOUTHERN CALIFORNIA-PORTS OF LOS ANGELES/LONG BEACH-LA/LB HARBOR-BRIDGE

[V_Thomas_Platform_Lighting1.pdf](#)

See link above for platform lighting for Vincent Thomas Bridge.

LNM: 28/19

THE LOCAL NOTICE TO MARINERS IS AVAILABLE ON THE WORLD WIDE WEB AT [HTTPS://WWW.NAVCEN.USCG.GOV](https://www.navcen.uscg.gov)

M. E. Brumbaugh, LT
U.S. Coast Guard
Acting Chief Waterways Management Branch

**U.S. COAST GUARD
REPORT OF DELAY AT DRAWBRIDGE
PER 33 CFR 117.5**

BRIDGE NAME: _____ DATE: _____

MILE : _____ WATERWAY: _____

1. Name/ Type of Vessel: _____ Direction of Travel : _____

2. Vessel Owner (Name): _____

(Address): _____

3. Name of Pilot (if applicable): _____

(Address): _____

4. Time vessel signaled for bridge opening: _____

5. Location of vessel when signal was given: _____

6. Time and location of vessel when delay began: _____

7. Method of signal for bridge opening: () Radio () Sound () Visual.

(If sound or visual signal was used, specify: _____)

8. Time bridge operator acknowledged signal: _____

9. Method of bridge operator acknowledgement: () Radio () Sound () Visual

(If sound or visual signal was used, specify: _____)

10. Did bridge operator acknowledgement indicate the bridge,

() Could be opened immediately?

() Could not be opened immediately?

11. If land traffic crossed the bridge:

Time land traffic started across the bridge _____

Time land traffic stopped crossing the bridge _____

Did land traffic stop on the bridge? _____

Duration land traffic stopped on the bridge _____

12. Time drawbridge opened for navigation _____

13. Additional comments:

I certify the above information is true to the best of my knowledge and understand this statement may be used by the U.S. Coast Guard in levying fines against the bridge owner.

Signature _____

Telephone _____

Mariners may complete and return to:

Commander (dpw)

Fax: (510) 437-5836

Email: Carl.T.Hausner@uscg.mil

Eleventh Coast Guard District

Coast Guard Island, Building 50-2

Alameda, CA 94501-5100

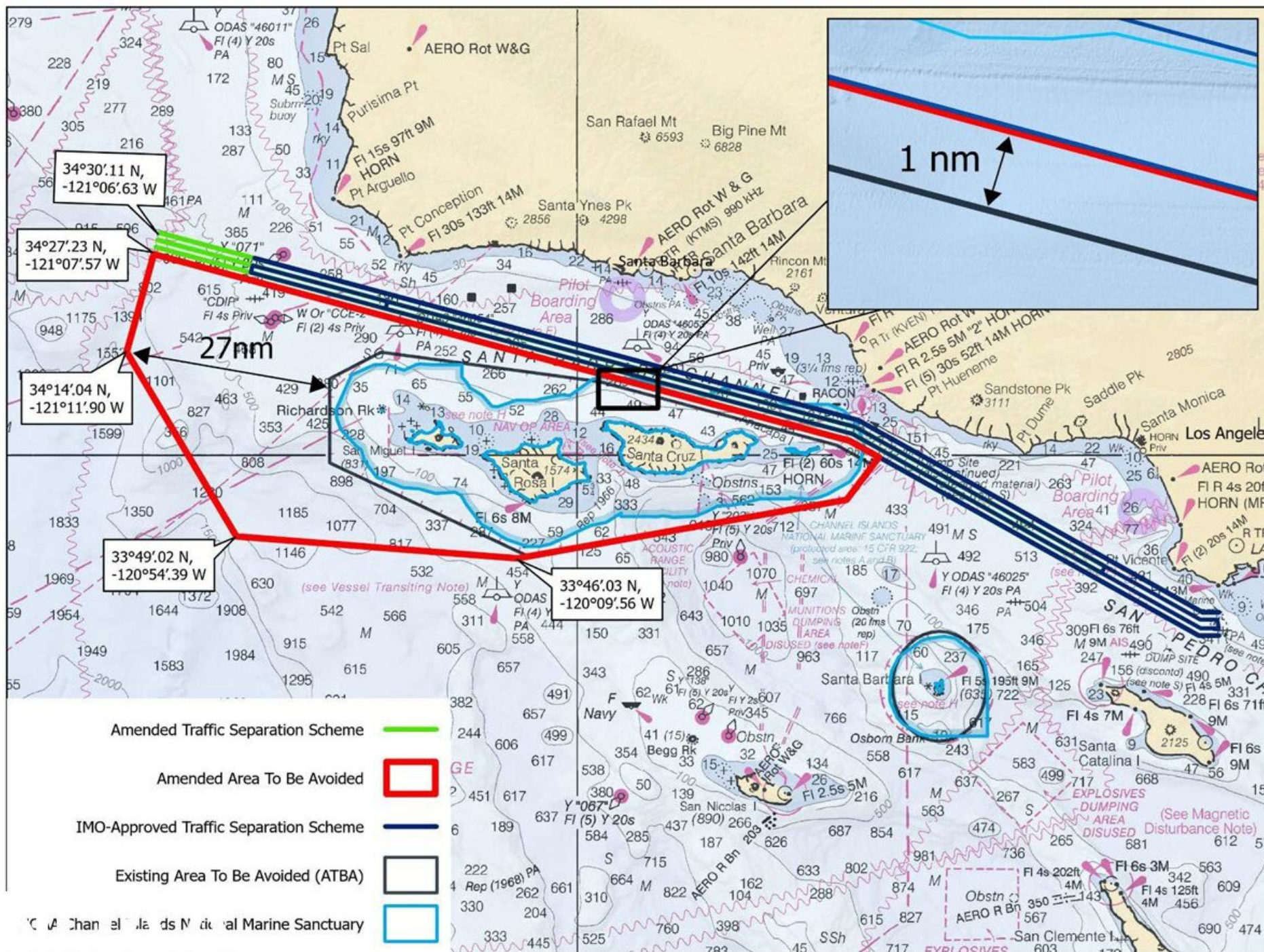
Attn: Bridge Office

Questions? Please contact: Carl Hausner, Bridge Administrator, Eleventh Coast Guard District

Office: (510) 437-3516

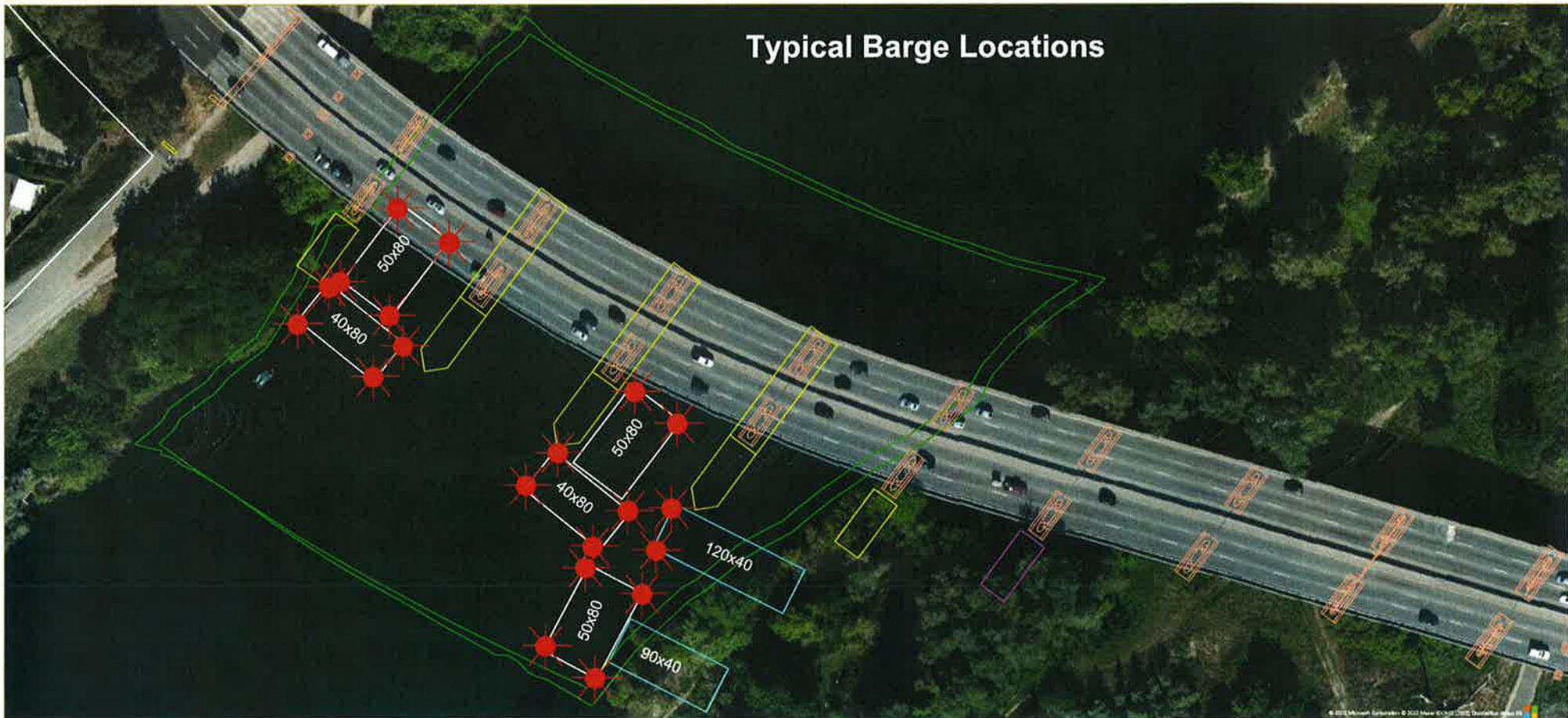
Cell: (510) 219-4366

Mariners are reminded not to require bridge openings for appurtenances nonessential to navigation, per 33 CFR 117.11



Rehabilitation and Modification Project
Capital City (CA Route 51) Bridge, Mile 4.0, American River

Typical Barge Location and Typical Barge Lighting



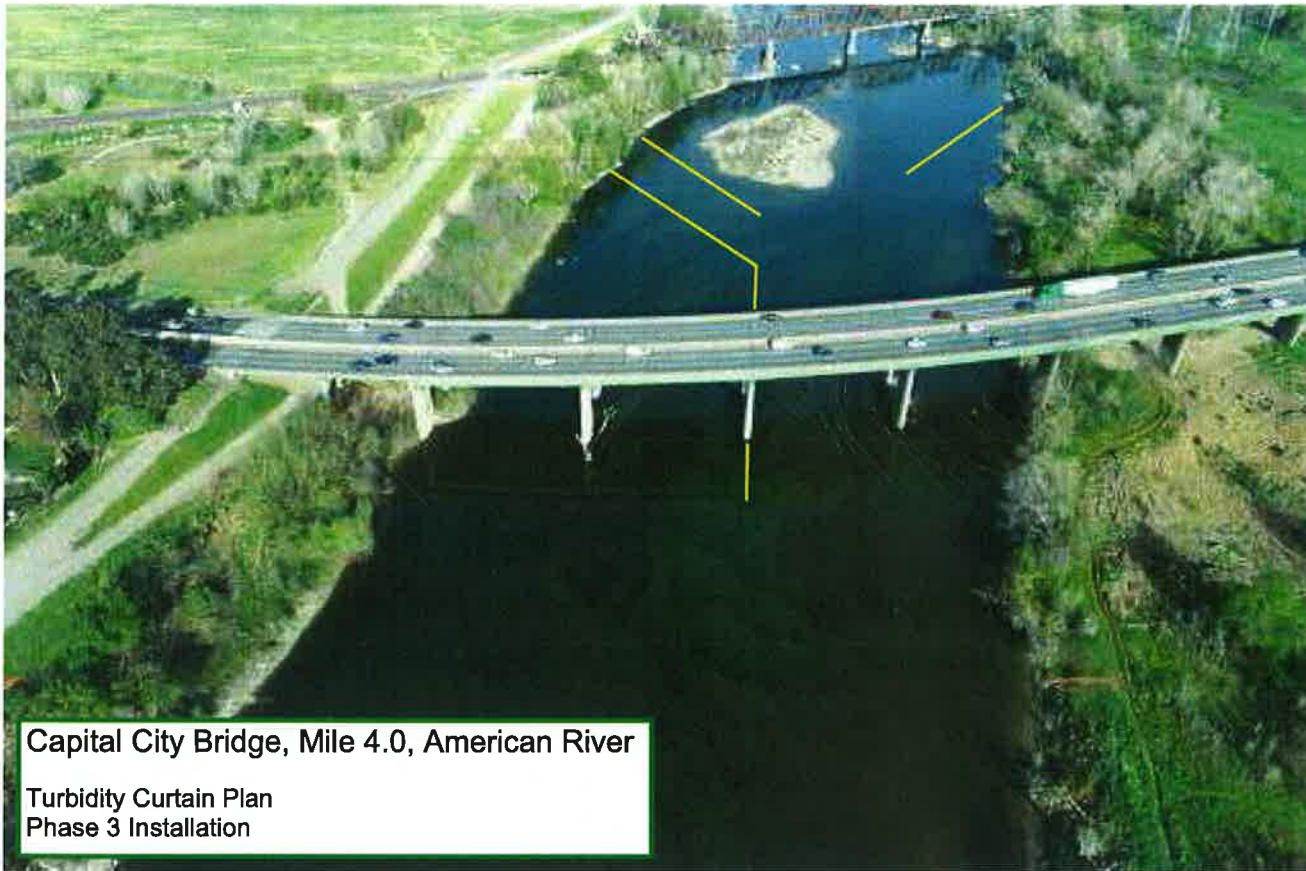
Each corner of each barge is lighted at night with steady burning all-round red light, visible at 2,000 by approaching vessels. All vessels transiting the project area should use extreme caution. Turbidity curtains will be placed at different locations during the project. The next four diagrams show the proposed location of the curtains.



Capital City Bridge, Mile 4.0, American River
Turbidity Curtain Plan
Phase 1 Installation



Capital City Bridge, Mile 4.0, American River
Turbidity Curtain Plan
Phase 2 Installation



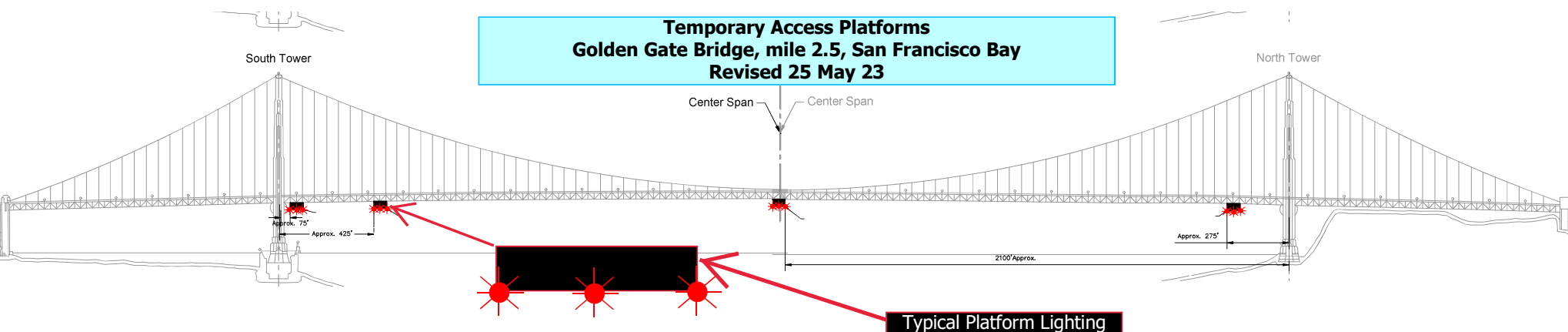
Capital City Bridge, Mile 4.0, American River

Turbidity Curtain Plan
Phase 3 Installation



Capital City Bridge, Mile 4.0, American River
Turbidity Curtain Plan
Phase 4 Installation

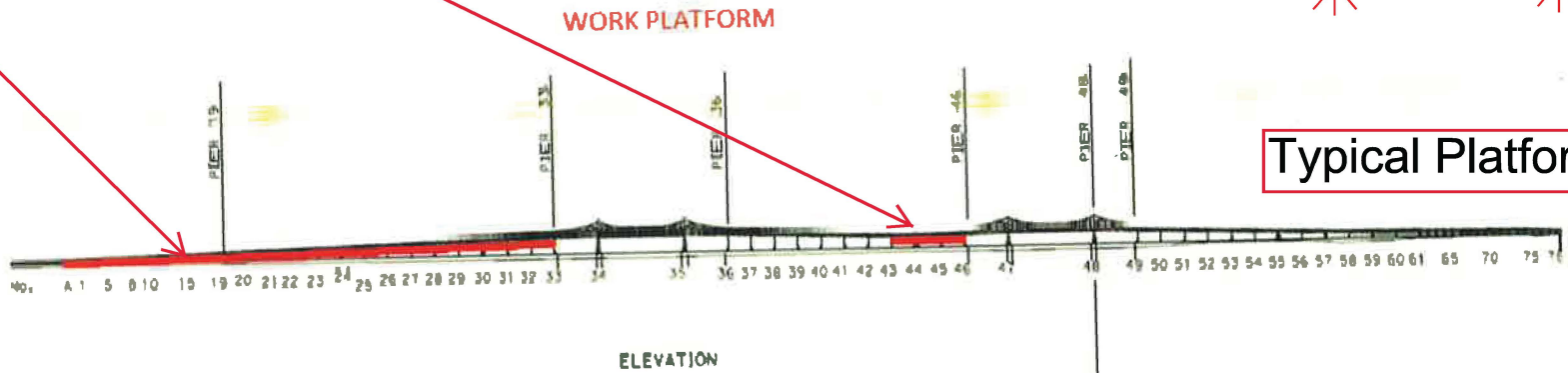
Temporary Access Platforms
Golden Gate Bridge, mile 2.5, San Francisco Bay
Revised 25 May 23



Four 54 ft wide temporary platforms are installed in the main span below low steel of the bridge, in relation to centerline of the span; two south of the north tower and two north of the south tower, reducing vertical clearance by no more than 14 feet. The upstream and downstream lower edges of the temporary platforms will be lighted at night with steady burning red lights visible at 2,000 yards by approaching vessels.

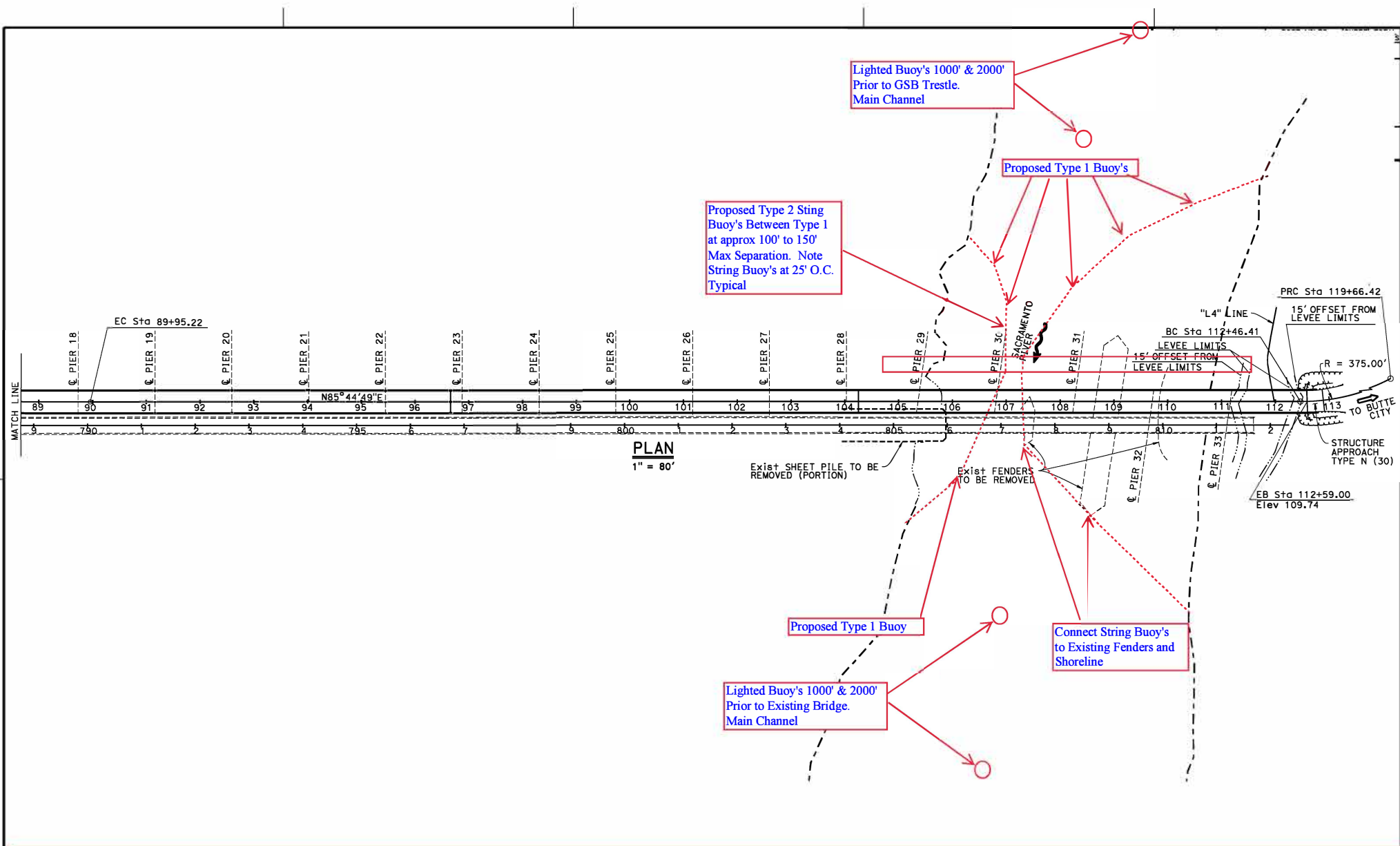
Painting and Structural Repairs Project
Richmond-San Rafael Bridge
Mile 13.0, San Francisco Bay

Temporary Underdeck Platforms

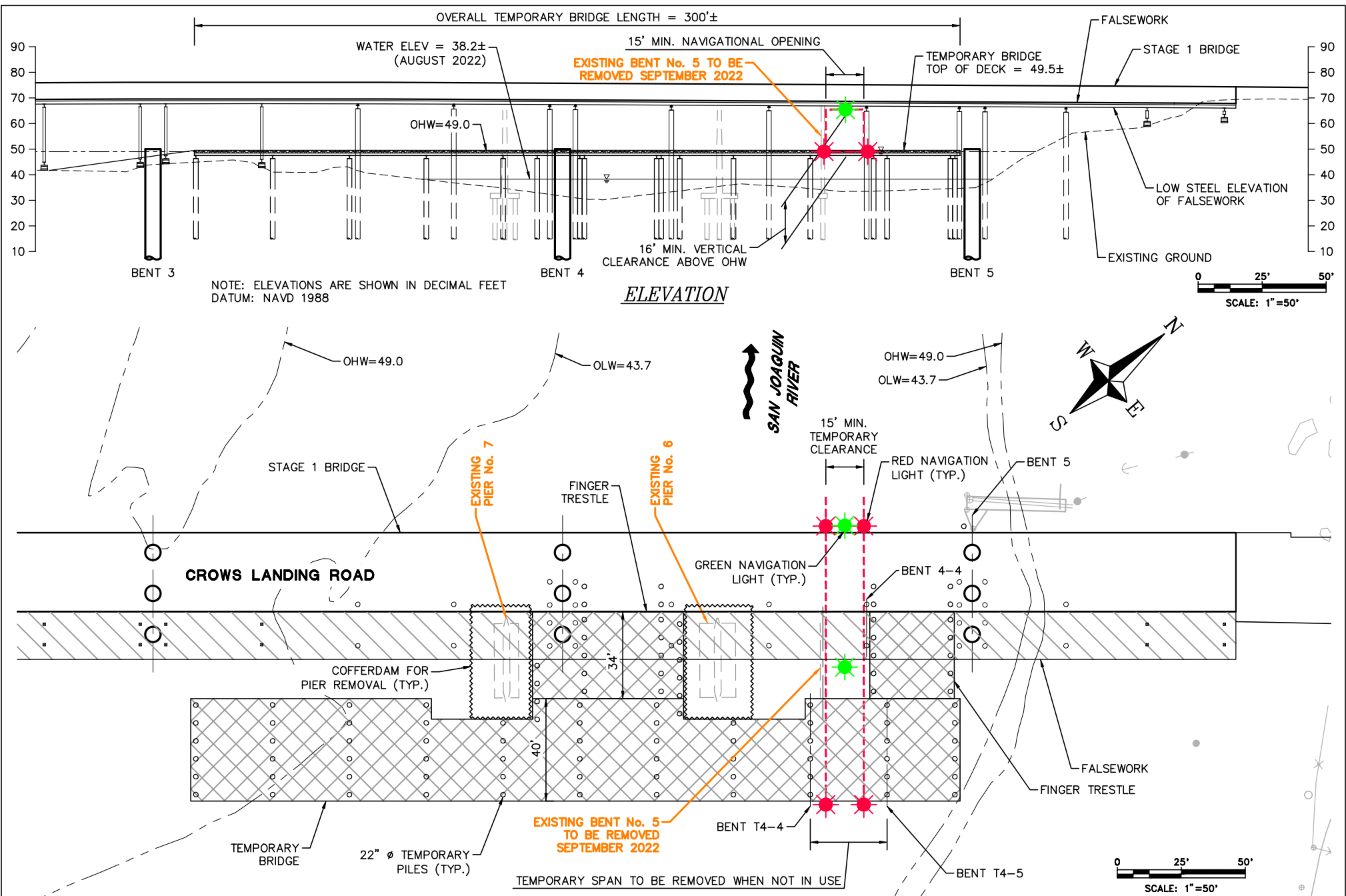


Typical Platform Lighting

The upstream and downstream lower edges of each temporary platform in each span are lighted at night with steady burning red lights to be seen at 2,000 yards by approaching vessels. Each platform reduces vertical clearance by no more than 3 feet.



**Butte City Bridge Replacement Project, mile 169.7, Sacramento River
Proposed Buoy Line During Construction**



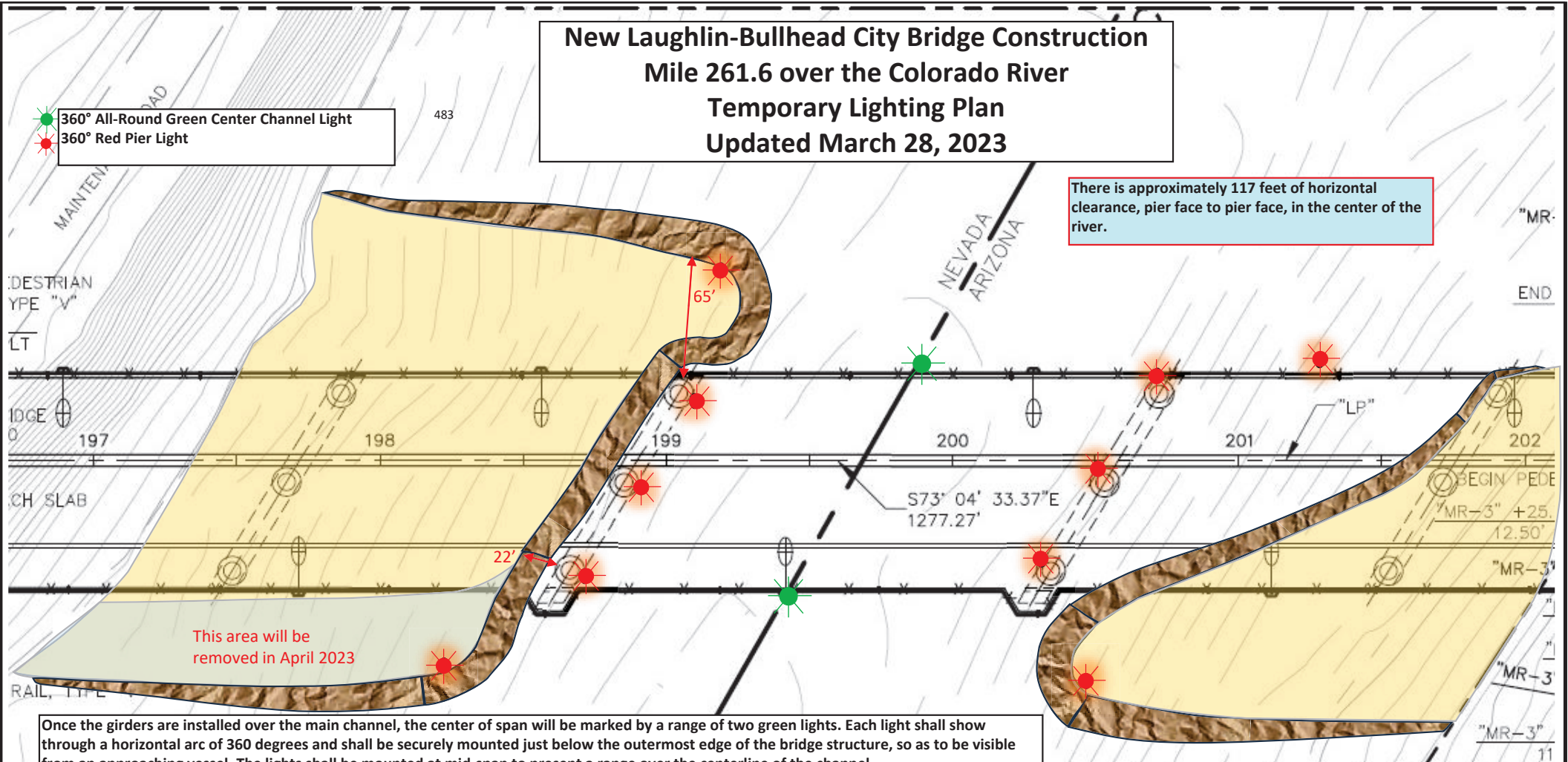
Temporary Navigation Lighting-Crows Landing Bridge Replacement Project - San Joaquin River

The temporary bridge, the replacement bridge and existing bridge will be lighted at night with two red lights marking the temporary navigation channel. The temporary falsework will be lighted, upriver and downriver, with green lights marking the center of the temporary navigation channel. During construction the temporary navigation channel will provide a horizontal clearance of 15 feet and a vertical clearance at Ordinary High Water of 16 feet.

New Laughlin-Bullhead City Bridge Construction Mile 261.6 over the Colorado River Temporary Lighting Plan Updated March 28, 2023

● 360° All-Round Green Center Channel Light
● 360° Red Pier Light

There is approximately 117 feet of horizontal clearance, pier face to pier face, in the center of the river.



This area will be removed in April 2023

Once the girders are installed over the main channel, the center of span will be marked by a range of two green lights. Each light shall show through a horizontal arc of 360 degrees and shall be securely mounted just below the outermost edge of the bridge structure, so as to be visible from an approaching vessel. The lights shall be mounted at mid-span to present a range over the centerline of the channel.

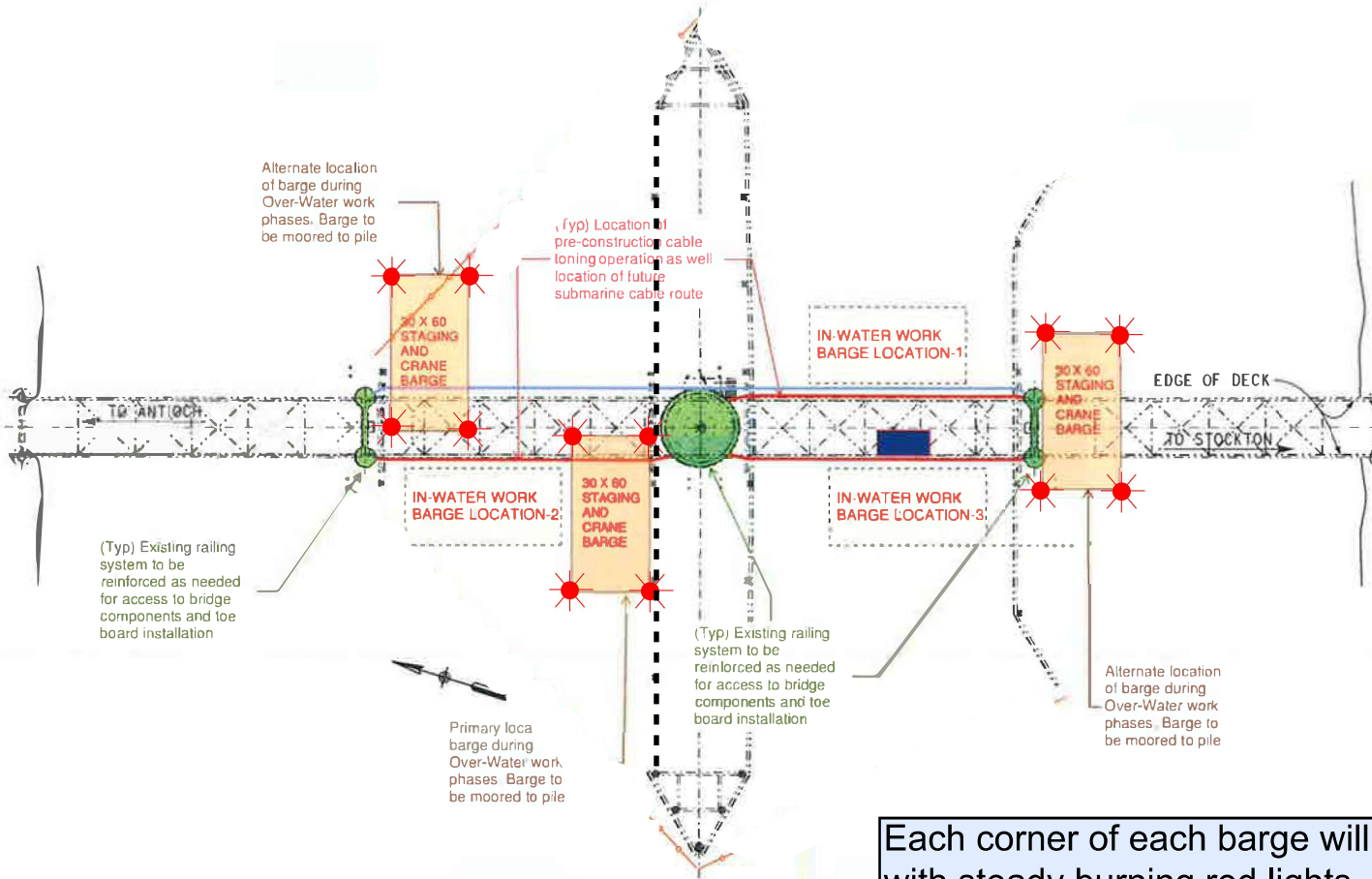
The exposed piers, as shown above, will be lit at night with steady burning red lights, visible at 2,000 yards by approaching vessels. The upriver and downriver in-ward tip of the Nevada side access pad and the downriver in-ward tip of the Arizona side access pad will be lit at night with steady burning red lights, visible at 2,000 yards by approaching vessels. A fourth red light will be installed on the northeast side of the river to mark the area to keep vessels out.

LAUGHLIN BRIDGE OVER COLORADO RIVER

ACCESS PAD MODIFICATIONS

By Greg Gentsch, P.E. March 28, 2023

Barge Lighting Plan Highway 4 Drawbridge Mile 14.8, Old River



Each corner of each barge will be lighted at night with steady burning red lights, visible at 2,000 yards from approaching vessels.

RESEARCH EQUIPMENT IN WATER

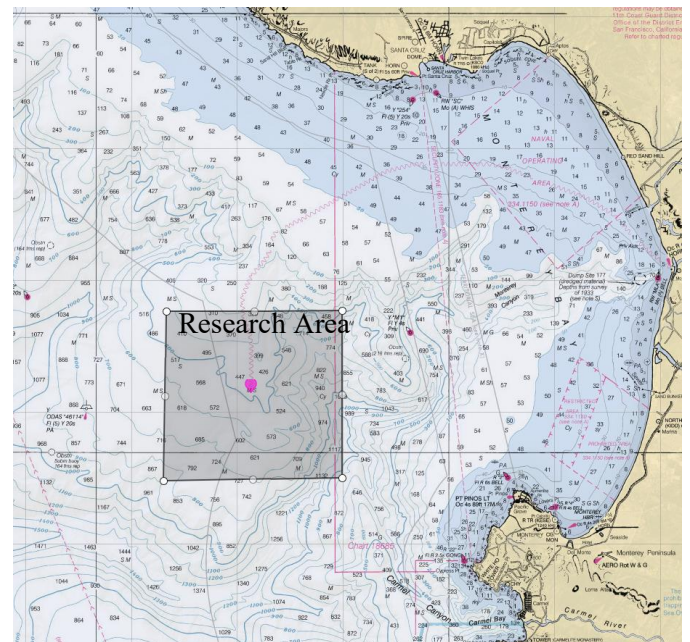
Monterey Bay
February 2023

SAILDRONE, INC. will operate an Unmanned Surface Vehicle called Saildrone conducting research in the Monterey Bay in the vicinity of position of 36° 42.7'N, 122° 11.2'W

VESSELS ARE REQUESTED TO TRANSIT THE AREA WITH CAUTION, AND REMAIN GREATER THAN 500 METERS AWAY FROM THE RESEARCH EQUIPMENT.

Saildrones are wind powered Unmanned Surface Vehicles that carry important oceanographic and fisheries acoustics research instrumentation and are controlled from shore through satellite communications.

- **Color: Orange**
- **Light: white all-round light**
- **Radar Reflector: Yes**
- **Notation: "Saildrone"**
- **Length: 23 ft & Width: 2 ft**
- **Height: 16 ft above water line**
- **Draft: 6 ft, Avg. speed: 3 kts**
- **GPS / AIS / Cameras: Yes**



SAILDRONE MISSION CONTROL

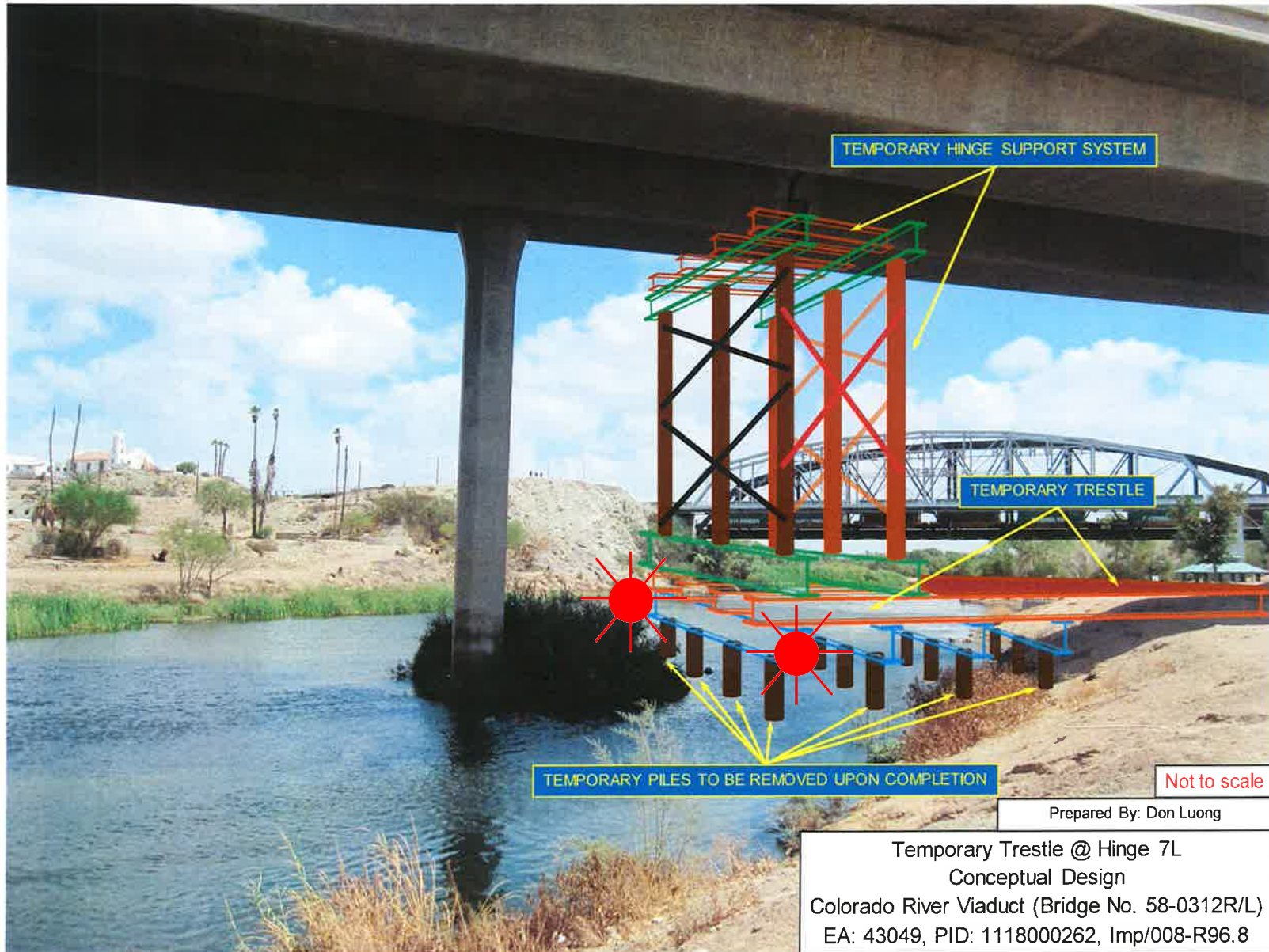
(510) 722-6070

missioncontrol@saildrone.com

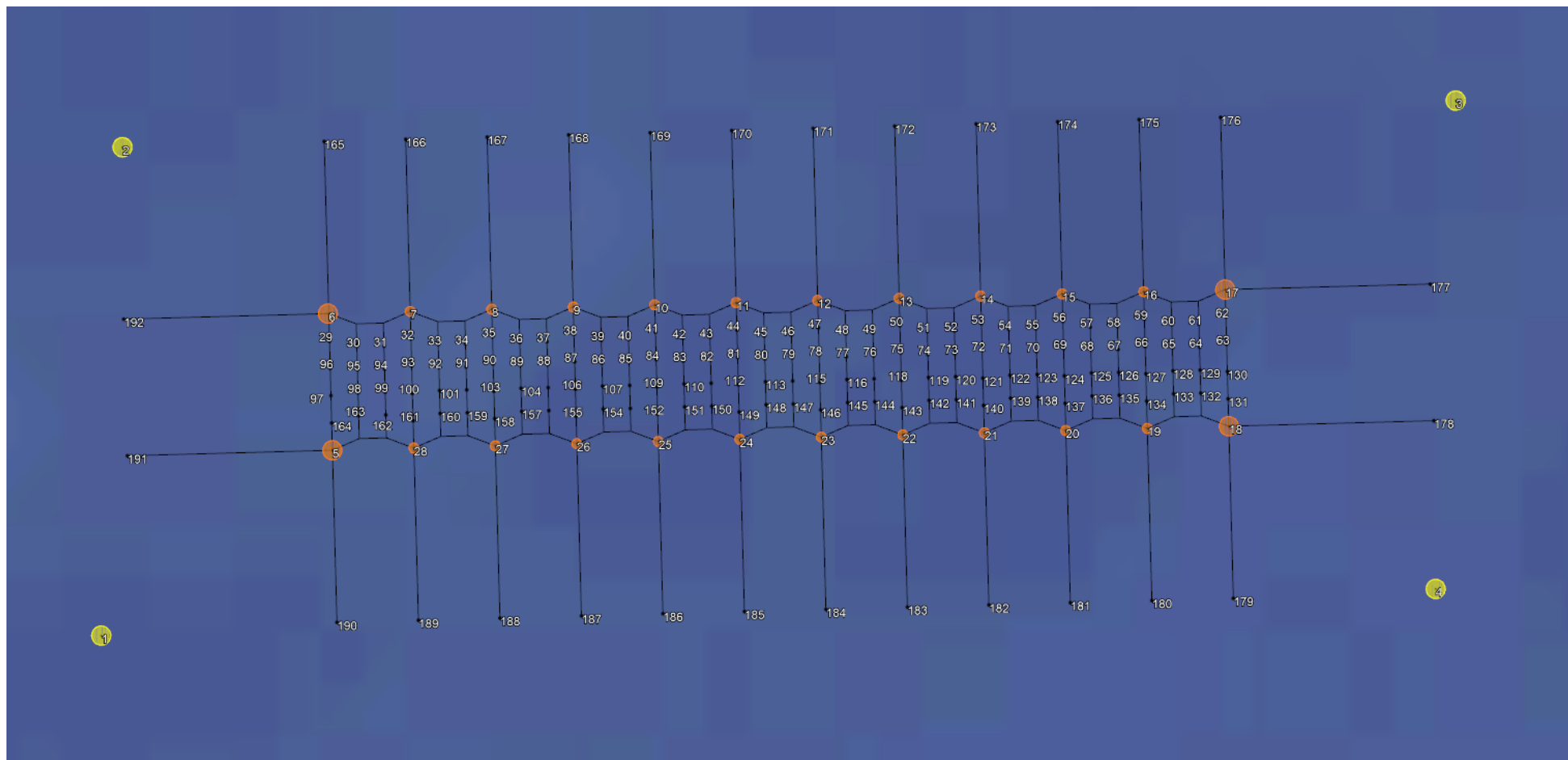
Bridge Repairs

Interstate 8 Bridge, mile 30.4, Colorado River

Temporary Trestle/Falsework Lighting

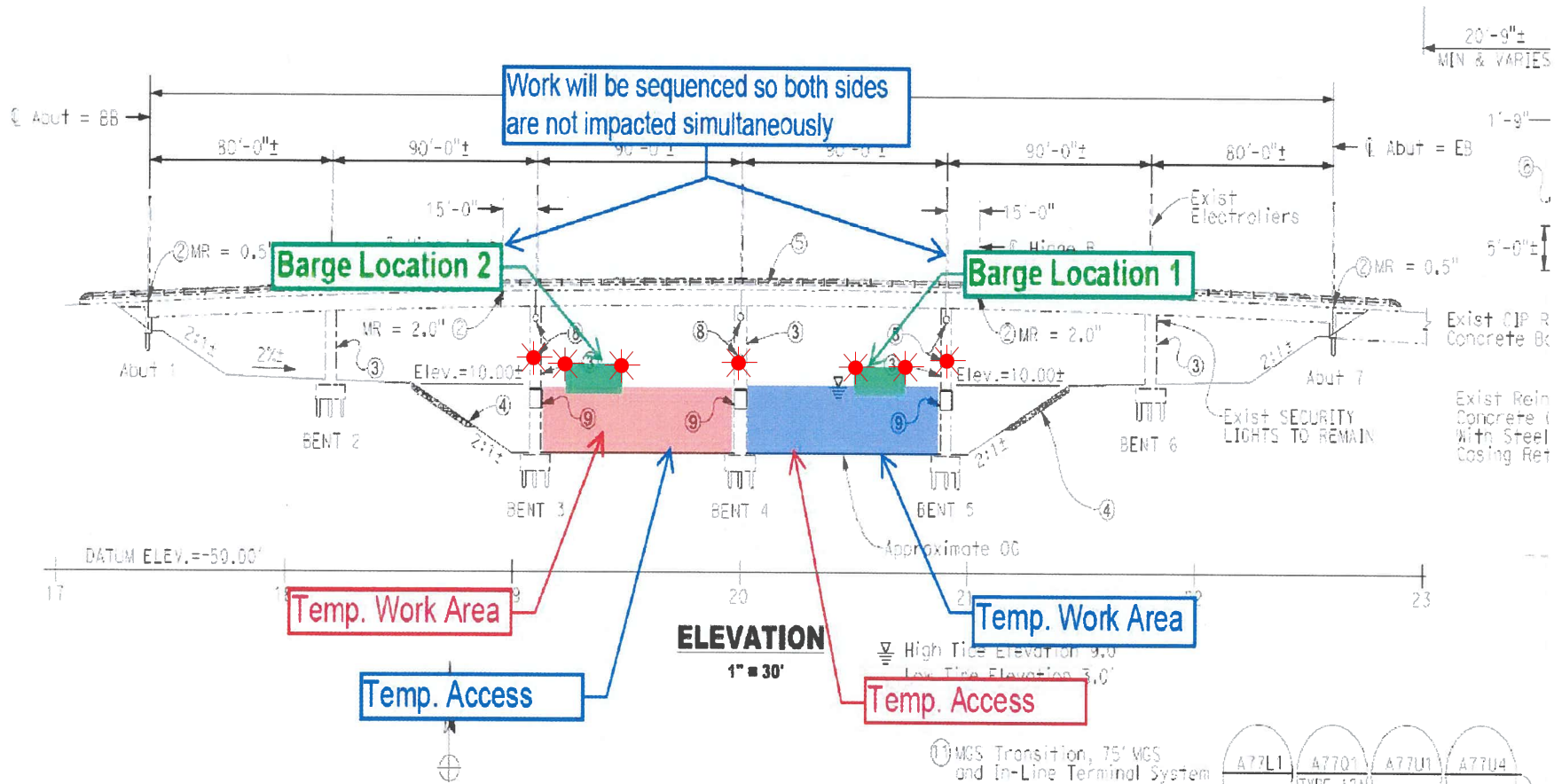


Each channel ward corner of the temporary trestle/falsework is lighted at night with steady burning red lights visible at 1,000 yards by approaching vessels.



Rehabilitation of the Channel Islands Blvd West Bridge (Edison Canal) over Channel Islands Harbor

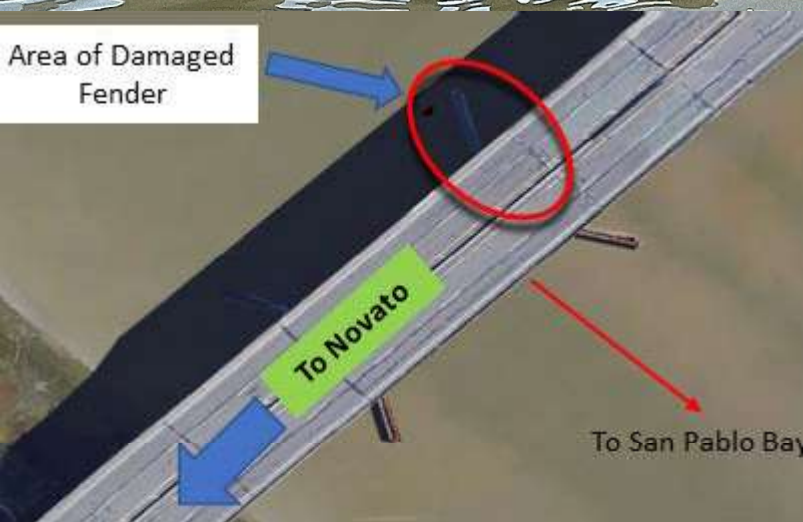
Flexi-Float and Cofferdam Lighting



The upstream and downstream ends of the temporary cofferdams and each corner of each flexi-float barge shall be lighted at night with steady burning red lights visible at 2,000 yards by approaching vessels. Only one span will be worked on at any one time, leaving the other span available for mariners.

Fender Damage

Highway 37 Bridge, mile 1.0, Petaluma River



Damaged upstream northwest fenders. Part of fender system encroaching 20-30 feet in main navigation span, unknown encroachment underwater. Mariners are urged to use extreme caution when transiting the bridge. The damaged system may not offer protection for vessels or the bridge is contact is made.

4 ALBERT EMBANKMENT
LONDON SE1 7SR
Telephone: +44 (0)20 7735 7611 Fax: +44 (0)20 7587 3210

COLREG.2/Circ.78
28 November 2022

TRAFFIC SEPARATION SCHEMES AND ASSOCIATED MEASURES

1 The Maritime Safety Committee, at its 106th session (2 to 11 November 2022), having considered the recommendation made by the Sub-Committee on Navigation, Communications and Search and Rescue at its ninth session (21 to 30 June 2022), and in accordance with the *Procedure for the adoption and amendment of traffic separation schemes, routing measures other than traffic separation schemes, including designation and substitution of archipelagic sea lanes, and ship reporting systems* (resolution A.858(20)), adopted traffic separation schemes and associated measures, as follows:

- .1 amended traffic separation schemes and associated measures *Approaches to the Chornomorsk, Odesa and Pivdennyi ports*, which replace the existing traffic separation schemes *Between the ports of Odessa and Ilichevsk* and *In the approaches to the ports of Odessa and Ilichevsk* (COLREG.2/Circ.14, paragraphs 1.1.2 and 1.1.3); and
- .2 amendments to the traffic separation scheme *In the Santa Barbara Channel* (COLREG.2/Circ.64, annex 6),

as set out in annexes 1 and 2, respectively.

2 Accordingly, the aforementioned traffic separation schemes and associated measures will be implemented at 0000 hours UTC on 1 June 2023.

ANNEX 2

AMENDMENTS TO THE TRAFFIC SEPARATION SCHEME "IN THE SANTA BARBARA CHANNEL"

In the Santa Barbara Channel

(Reference charts: United States 18700, 2013 edition; 18720, 2020 edition; and 18721, 2009 edition.

Note: These charts are based on North American 1983 datum)

Part II

Between Point Conception and Point Arguello

The description of the traffic separation scheme in part II "Between Point Conception and Point Arguello" is replaced by the following:

- (a) A separation zone is bounded by a line connecting the following geographical positions:

(1) 34°20'.84 N, 120°30'.28 W (13) 34°29'.15 N, 121°06'.94 W
(6) 34°19'.88 N, 120°30'.59 W (14) 34°28'.19 N, 121°07'.26 W

- (b) A traffic lane for westbound traffic is established between the separation zone and a line connecting the following geographical positions:

(7) 34°21'.80 N, 120°29'.96 W (15) 34°30'.11 N, 121°06'.63 W

- (c) A traffic lane for eastbound traffic is established between the separation zone and a line connecting the following geographical positions:

(12) 34°18'.92 N, 120°30'.91 W (16) 34°27'.23 N, 121°07'.57 W



To: All Mariners

April 10, 2023

The National Oceanic and Atmospheric Administration (NOAA), with support from the United States Coast Guard (USCG) and Environmental Protection Agency (EPA) is issuing a voluntary 10-knot Vessel Speed Reduction (VSR) request that goes into effect May 1 off of San Francisco, Monterey, and southern California; please see the attached charts. Large ships traveling at 10 knots or less give whales more time to move to avoid a strike, reduce the lethality of a strike should one occur, generate less harmful ocean noise and fewer air emissions. Thus, the goals of these voluntary VSR zones are to reduce the risk of fatal ship strikes to endangered blue, fin, and humpback whales, reduce ocean noise, and protect public health along the California coast. These whale species are protected under the Federal Endangered Species Act (16 U.S.C. 1538 et seq.), the Marine Mammal Protection Act (16 U.S.C. 1361 et seq.), and the National Marine Sanctuaries Act (16 U.S.C. 1431 et seq.). Any unauthorized take of whales, even if unintentional, by vessels transiting in U.S. waters violates federal statutes.

The voluntary VSR requests will be in effect May 1 to December 15, 2023 for all VSR zones off California, as shown in the attached charts. Note the expansion of the northern VSR zone throughout Monterey Bay National Marine Sanctuary, and the southern California VSR zone expansion to include recent International Maritime Organization modifications to the Santa Barbara Channel Traffic Separation Scheme (TSS) and Area To Be Avoided (ATBA). NOAA, USCG, and EPA request that all vessels 300 gross tons (GT) or larger reduce speeds to 10 knots when transiting within the designated VSR zones and prioritize use of the western traffic lane of the San Francisco TSS when traveling in the San Francisco Offshore TSS. Vessels may deviate from the speed and routing recommendations whenever necessary to maintain safe maneuvering.

We request your cooperation with the voluntary VSR requests to protect the health of coastal communities and whales that annually migrate to and through these zones to feed. All transits by vessels 300 GT or larger are analyzed by NOAA via Automatic Information System (AIS) data provided by USCG to assess the cooperation of your company along with industry as a whole.

NOAA, USCG, and EPA are committed to the long-term protection of nationally significant marine resources and public health by enhancing marine safety and environmental awareness in the maritime community. If you have questions, please contact Sean Hastings, 805-705-1790, sean.hastings@noaa.gov.

NOAA, USCG, and EPA commend your commitment to protecting endangered and threatened whales and protecting public health by cooperation with the 10 knot VSR requests and working towards a goal of 100% cooperation in 2023.

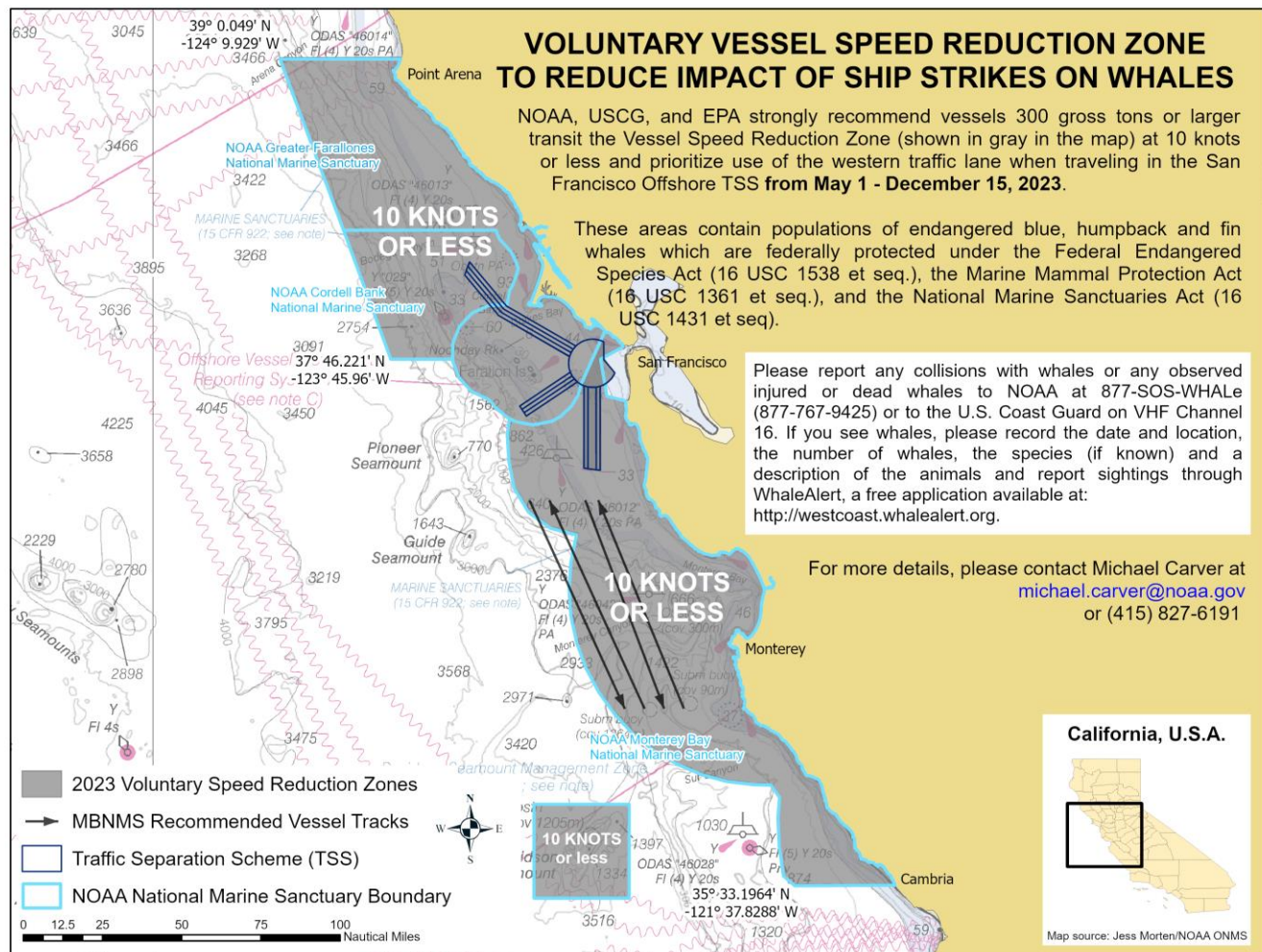
William J. Douros, Regional Director
NOAA Office of National Marine Sanctuaries
West Coast Region

Scott M. Rumsey, Acting Regional Administrator
NOAA National Marine Fisheries Service
West Coast Region

Andrew M. Sugimoto, Rear Admiral
U.S. Coast Guard
District Eleven

Kerry Drake, Acting Regional Administrator
Environmental Protection Agency
Region 9

2023 Voluntary Vessel Speed Reduction Zones – San Francisco and Monterey Bay Region

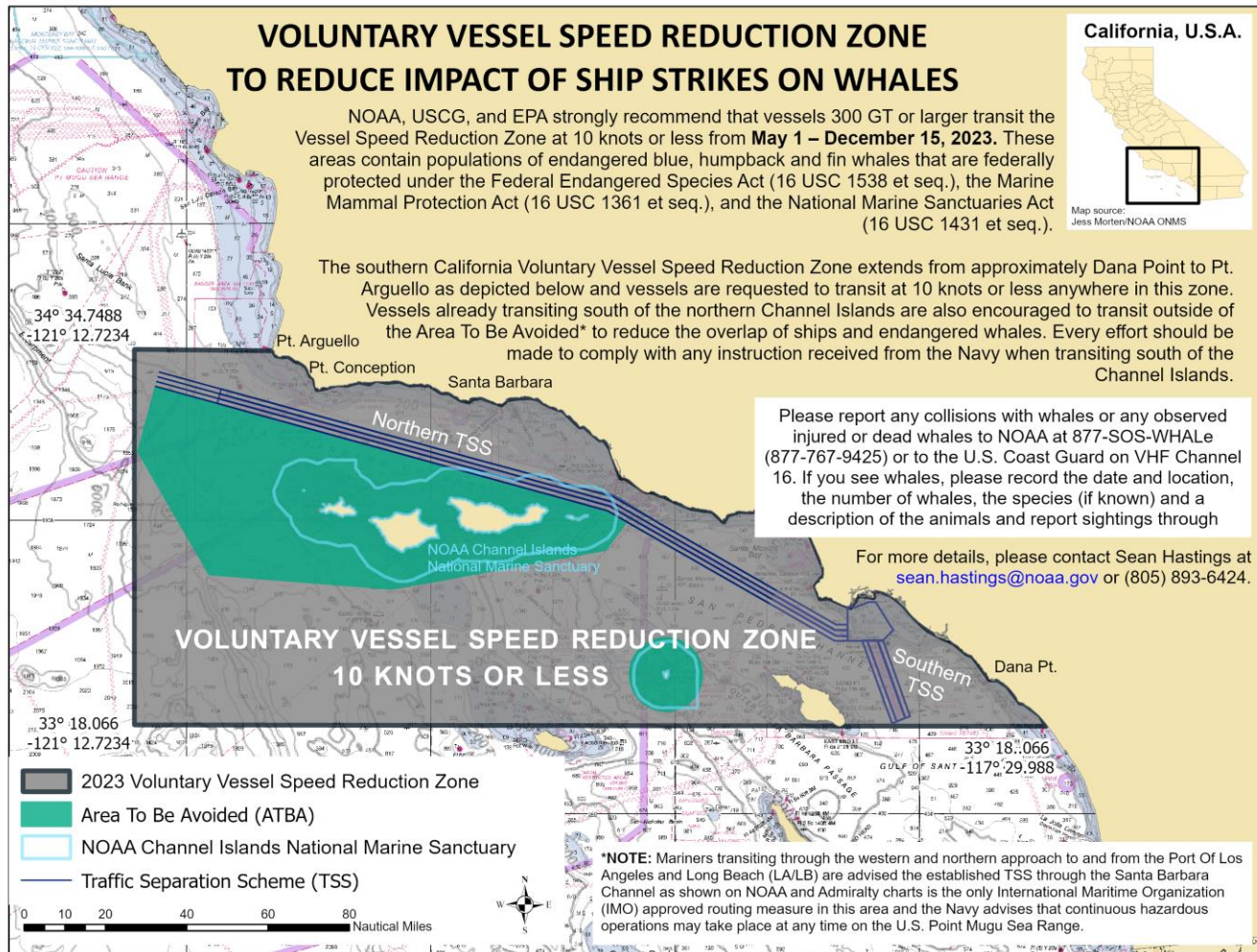


NOAA Chart 501

This map is not to be used for navigational purposes

20 APRIL 2023

2023 Voluntary Vessel Speed Reduction Zone – Southern California Region



4 ALBERT EMBANKMENT
LONDON SE1 7SR
Telephone: +44 (0)20 7735 7611 Fax: +44 (0)20 7587 3210

SN.1/Circ.342
28 November 2022

ROUTEING MEASURES OTHER THAN TRAFFIC SEPARATION SCHEMES

1 The Maritime Safety Committee, at its 106th session (2 to 11 November 2022), having considered the recommendation made by the Sub-Committee on Navigation, Communications and Search and Rescue at its ninth session (21 to 30 June 2022), and in accordance with the *Procedure for the adoption and amendment of traffic separation schemes, routeing measures other than traffic separation schemes, including designation and substitution of archipelagic sea lanes, and ship reporting systems* (resolution A.858(20)), adopted routeing measures other than traffic separation schemes, as follows:

- .1 recommended route *Off the coast of Shio-no-Misaki*;
- .2 amendments to areas to be avoided *Off the California coast* (resolution A.711(17));
- .3 no anchoring area *In the southern portion of Pulley Ridge*; and
- .4 recommendation on navigation for containerships in the traffic separation schemes *Off Vlieland, Vlieland North and Vlieland Junction, Terschelling-German Bight, Off Friesland and German Bight western approach*,

as set out in annexes 1 to 4, respectively.

2 Accordingly, the aforementioned routeing measures will be implemented at 0000 hours UTC on 1 June 2023.

ANNEX 2

AMENDMENTS TO AREAS TO BE AVOIDED "OFF THE CALIFORNIA COAST"

Off the California coast

(Reference charts: United States 18700, 2013 edition; 18720, 2020 edition; 18721, 2009 edition.

Note: These charts are based on North American 1983 datum.)

Description of the area to be avoided

- (a) **In the region of San Miguel, Santa Rosa, Santa Cruz and Anacapa Islands off the coast of southern California**

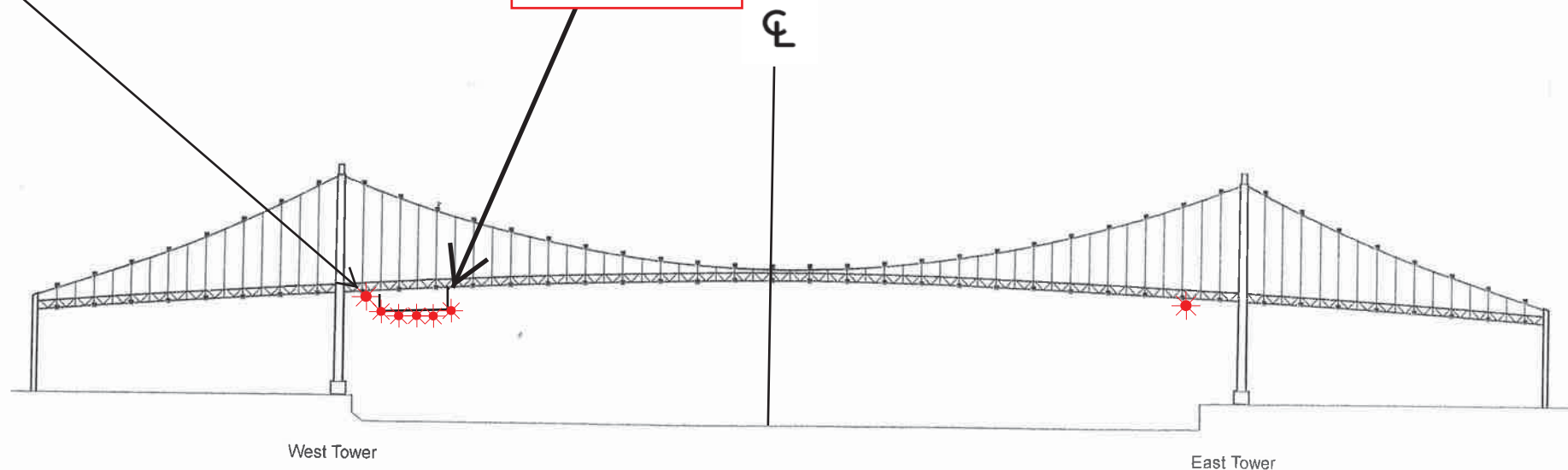
The existing area to be avoided is replaced by the area bounded by a line connecting the following geographical positions:

- (1) 34°27'.23 N, 121°07'.57 W
- (2) 34°02'.01 N, 119°16'.56 W
- (3) 33°59'.77 N, 119°11'.85 W
- (4) 33°54'.01 N, 119°16'.87 W
- (5) 33°46'.03 N, 120°09'.56 W
- (6) 33°49'.02 N, 120°54'.39 W
- (7) 34°14'.04 N, 121°11'.90 W

Vincent Thomas Highway Bridge
Mile 3.0
Los Angeles/Long Beach Harbor
Painting Project

West Channel Margin
Light

Below Low Steel
Platform. 5' 4"
reduction in
vertical clearance



A 180 foot long under deck temporary platform will reduce vertical clearance by 5' 4". Each corner and every 50 feet along the the upstream and downstream side of the platform will lighted at night with steady burning red lights visible at 2000 yards by approaching vessels. In a duration of 1-year the platform will progress from the western channel margin light to 250' west of the centerline of the bridge.