



U.S. Department  
of Homeland Security  
**United States  
Coast Guard**

---

## LOCAL NOTICE TO MARINERS

**District: 11**

**Week: 08/23**

CORRESPONDENCE TO:  
COMMANDER  
DISTRICT ELEVEN (DPW)  
COAST GUARD ISLAND BUILDING 50-2  
ALAMEDA, CA 94501-5100

REFERENCES: COMDTPUB P16502.6, Light List Volume VI, 2017 Edition, U.S. Chart No.1 12th Edition, and Coast Pilot Volume 7 49th Edition. These publications, along with corrections, are available at: <https://nauticalcharts.noaa.gov/>

BROADCAST NOTICE TO MARINERS - Information concerning aids to navigation and waterway management promulgated through BNM HB-0006-23, SF-0046-23, LA-0019-23, and SD-0006-23 have been incorporated in this notice, or will continue if still significant.

---

### SECTION I - SPECIAL NOTICES

This section contains information of special concern to the Mariner.

#### SUBMITTING INFORMATION FOR PUBLICATION IN THE LOCAL NOTICE TO MARINERS

A complete set of guidelines with examples and contact information can be found at <http://www.pacificarea.uscg.mil/Our-Organization/District-11/Prevention-Division/LnmRequest/> or call Waterways Management Branch at 510-437-2929 or e-mail D11-SMB-D11-LNM@uscg.mil. Please provide all Local Notice to Mariners submissions 14 days prior to the start of operations

LNM: 17/21

#### BRIDGE INFORMATION- PROJECTS, DISCREPANCIES, CORRECTIONS & REGULATORY

For all bridge related issues, including lighting, operation, obstructions, construction, demolition, etc. contact the Eleventh Coast Guard District Bridge Administrator 24 hour cell phone at 510-219-4366. Flotsam may accumulate on and near bridge piers and abutments. Mariners should approach all bridges with caution. A vessel delay at a drawbridge may be reported to the District Bridge Administrator by telephone, or by using the Delay\_Report\_11-2017.pdf included in the Enclosures section of this Local Notice to Mariners.

#### BRIDGE INFORMATION-COMMUNICATIONS PROTOCOL-BENICIA/MARTINEZ UPRR BRIDGE- CARQUINEZ STRAIT

All mariners requiring a bridge lift at the Benicia-Martinez Union Pacific Railroad Bridge, mile 7.0, over the Carquinez Strait, California, should follow the protocol in the document entitled "Coordination of Communications for Union Pacific Railroad Lift Operations." Mariners can download a copy of the document by selecting the link BENICIA-MARTINEZ RR BRIDGE under the QUICK LINKS section at <https://www.pacificarea.uscg.mil/vtssf>.

#### CAUTION TO BE USED IN RELIANCE UPON AIDS TO NAVIGATION

The aids to navigation depicted on charts comprise a system of fixed and floating aids to navigation with varying degrees of reliability. Prudent mariners will not rely solely on any single aid to navigation, particularly a floating aid to navigation. With respect to buoys, the buoy symbol is used to indicate the approximate position of the buoy body and the sinker which secures the buoy to the seabed. The approximate position is used because of the practical limitations in positioning and maintaining buoys and their sinkers in precise geographical locations. These limitations include, but are not limited to, inherent imprecision in position fixing methods, prevailing atmospheric and sea conditions, slope of and the material making up the seabed, the fact that buoys are moored to sinkers by varying length of chain, and the fact that the buoy body and/or sinker positions are not under continuous surveillance, but are normally checked only during periodic maintenance visits which often occur more than a year apart. Due to the forces of nature, the position of the buoy body can be expected to shift inside and outside the charted symbol. The mariner is also cautioned that buoys may be extinguished or sound signals may not function as the result of natural causes, collisions, or other accidents. For the foregoing reasons, a prudent mariner must not rely completely upon the position or operation of floating aids to navigation, but will also utilize bearings from fixed objects and aids to navigation on shore. Furthermore, a vessel attempting to pass close aboard always risks collision with a yawing buoy or with the obstruction that the buoy marks.

#### NAVIGATION CENTER WEBSITE TRANSITION

The U.S. Coast Guard Navigation Center is going to transition the Navigation Center website to a new, enhanced version in the first quarter of 2022. As part of this transition, URLs will be updated across the site including URLs linked to PDFs. Therefore, once the transition is complete, legacy site URLs will no longer function, including bookmarked URLs and URLs used in automatic downloading of data and/or products. Outdated URLs will automatically redirect to the home page of the site, and from there you will be able to easily navigate to your preferred page.

Below are a few of the "old"/new URL pairs listed for your convenience. Please note that the new URLs will not be active until we launch the new

website. Of course, once it is launched, the new URLs will be available for re-bookmarking. As a reminder, these are top level URLs that may contain additional links that you use.

This notice will be updated when the final launch date is determined and another notice will be issued to notify you when the site goes live. Questions/concerns may be directed to the NAVCENWebTEAM@uscg.mil.

**Local Notices to Mariners (LNMs)**

Current URLs: <https://www.navcen.uscg.gov/?pageName=InmMain>

Replacement: <https://www.navcen.uscg.gov/local-notices-to-mariners-by-cg-district>

**Light Lists Annual Publication**

Current URLs: <https://navcen.uscg.gov/?pageName=lightLists>

Replacement: <https://www.navcen.uscg.gov/light-list-annual-publication>

**Light List - Weekly**

Current URLs: <https://navcen.uscg.gov/?pageName=lightListWeeklyUpdates>

Replacement: <https://www.navcen.uscg.gov/weekly-light-lists>

**Light List - Corrections**

Current URLs: <https://navcen.uscg.gov/?pageName=lightListCorrections>

Replacement: <https://www.navcen.uscg.gov/light-list-summary-of-corrections>

LNM: 06/22

**NORTHERN CALIFORNIA-RICHMOND HARBOR ENTRANCE CHANNEL-HAZARD TO NAVIGATION**

The Coast Guard has received a report of an unmarked barge mooring in the Richmond Harbor Entrance Channel at 37-54-06N 122-23-56W. Mariners are requested to transit the area with caution. For more details or comments contact U.S. Coast Guard Sector Waterways at 415-399-7442.

Charts: 18649 18653

LNM: 41/22

**NORTHERN CALIFORNIA-SAN FRANCISCO-MILE ROCKS LIGHT-REDUCED NOMINAL RANGE**

Mile Rocks Light (LLNR 365) will have a temporarily reduced intensity of 5nm until further notice. Mariners are requested to transit the area with caution. For more details or comments contact LT Miranda Brumbaugh at 510-437-2978 or [Miranda.E.Brumbaugh@uscg.mil](mailto:Miranda.E.Brumbaugh@uscg.mil).

Charts: 18007 18010 18020 18022 18640 18649 18680

LNM: 16/19

**SAFETY NOTICE - NAVIGATIONAL RANGE AND SECTOR LIGHTS ON ELECTRONIC CHARTS**

"The U.S. Coast Guard has become aware that the Range and Sector Light Characteristic labels are not displayed on Electronic Navigational Charts (ENCs) when used in an Electronic Chart Display and Information System (ECDIS) due to limitations of the S-52 ECDIS display specification. Mariners may query the ENC data directly within ECDIS or refer to the Light List for complete information on Range and Sector Light Characteristics."

LNM: 39/22

**SOUTHERN CALIFORNIA-SAN DIEGO BAY-MINIMIZE WAKE**

The Navy Port Operations Manager requests that vessels slow to 7 kts when a vessel is moored in restricted area (33 CFR 334.865) located on the northeast side of North Island at 32-42-57N 117-11-22W, between San Diego Channel Lighted Buoy 20 (LLNR 1710) and San Diego Channel Lighted Buoy 22 (LLNR 1830). For more details or comments contact LT Rodriguez at 619-545-3232, [Rigoberto.rodriguez3@navy.mil](mailto:Rigoberto.rodriguez3@navy.mil).

Chart 18773

LNM: 10/22

**SUBMITTING INFORMATION FOR PUBLICATION IN THE LOCAL NOTICE TO MARINERS**

Coast Guard District Eleven Waterways upgrade to E-Mail capabilities. All future requests for article submission in the District Eleven Local Notice to Mariners are requested to be E-Mailed to [D11-SMB-SMB-D11-LNM@uscg.mil](mailto:D11-SMB-SMB-D11-LNM@uscg.mil) at least two weeks prior to the operation. For more details or comments please contact District Eleven Waterways Management Branch at 510-437-2929 or e-mail [D11-SMB-D11-LNM@uscg.mil](mailto:D11-SMB-D11-LNM@uscg.mil). Coast Guard District Eleven requests all Local Notice to Mariners submissions be E-Mailed to our office at least 14 days prior to the start of operations for timely submittal and publication.

LNM: 17/21

---

---

**SECTION II - DISCREPANCIES**

This section lists all reported and corrected discrepancies related to Aids to Navigation in this edition. A discrepancy is a change in the status of an aid to navigation that differs from what is published or charted.

---

**DISCREPANCIES (FEDERAL AIDS)**

<u>LLNR</u>	<u>Aid Name</u>	<u>Status</u>	<u>Chart No.</u>	<u>BNM Ref.</u>	<u>LNM St</u>	<u>LNM End</u>
-------------	-----------------	---------------	------------------	-----------------	---------------	----------------

5	Point Loma Light	SS IMCH	18773	SD-0001-23	04/23
10	San Diego Bay Approach Lighted Whistle Buoy SD	RAC INOP	18772	SD-0070-22	38/22
125	Long Beach Light	LT EXT	18751	LA-0148-20	49/20
240	Morro Bay West Breakwater Light	LT EXT/SS INOP	18703	LA-0010-23	04/23
345	San Francisco South Traffic Lane Lighted Bell Buoy S	MISSING	18640	SF-0042-21	09/21
360	San Francisco Approach Lighted Whistle Buoy SF	RAC INOP	18649	SF-0040-22	17/22
365	Mile Rocks Light	LT EXT	18649	SF-0099-22	44/22
385	Point Reyes Light	LT EXT	18640	SF-0025-23	04/23
450	Point Cabrillo Light	REDUCED INT	18620	HB-0006-23	05/23
545	Crescent City Harbor Lighted Whistle Buoy 2	LT EXT	18603	HB-0013-22	51/22
1485	San Diego Bay Approach Lighted Whistle Buoy SD	RAC INOP	18772	SD-0070-22	38/22
1493	San Diego Bay Approach Lighted Bell Buoy 4	LT IMCH	18772	SD-0074-22	41/22
2295	Oceanside Breakwater Light 1	REDUCED INT	18758	SD-0080-22	44/22
2635	Ship Rock Light	LT EXT	18757	LA-0095-21	26/21
2641	Isthmus Cove Harbor Reefs Light	STRUCT DMGD	18757	LA-0018-21	05/21
2670	Santa Catalina Island West End Light	LT EXT	18757	LA-0113-19	34/19
2810	Anaheim Bay Channel Buoy 7	OFF STA	18749	LA-0062-22	30/22
3012	Long Beach Light	LT EXT	18751	LA-0148-20	49/20
3117	Los Angeles Main Channel Lighted Buoy 11	REDUCED INT	18751	LA-0105-21	28/21
3132	Terminal Island Channel Lighted Buoy 1	STRUCT DMGD	18751	LA-0027-22	16/22
3625	Port Hueneme Channel Lighted Buoy 6	SINKING	18725	LA-0091-22	39/22
3772	Santa Barbara Harbor Lighted Buoy 6	MISSING	18725	LA-0005-23	02/23
3790	Santa Barbara Harbor Lighted Buoy 10	OFF STA	18725	LA-0017-23	05/23
3792	Santa Barbara Harbor Lighted Buoy 12	OFF STA	18725	LA-0016-23	05/23
3835	Morro Bay West Breakwater Light	LT EXT/SS INOP	18703	LA-0010-23	04/23
3845	Morro Bay Channel Lighted Buoy 2	OFF STA	18703	LA-0013-23	04/23
3970	Monterey Harbor Light 6	SS INOP	18685	SF-0064-20	27/20
4130	Pillar Point Harbor Entrance Lighted Gong Buoy 1	SS INOP	18680	SF-0040-23	06/23
4135	Pillar Point Harbor Entrance Lighted Buoy 2	OFF STA/LT EXT	18680	SF-0041-23	07/23
4140	Pillar Point Harbor Entrance Lighted Bell Buoy 3	LT EXT	18680	SF-0022-23	03/23
4155	Colorado Reef Lighted Buoy 26	OFF STA	18640	SF-0163-21	51/21
4165	San Francisco Main Ship Channel Lighted Whistle Buoy 2	LT EXT	18649	SF-0006-23	02/23
4245	Mile Rocks Light	LT EXT	18649	SF-0099-22	44/22
4625	Oakland Outer Harbor Range A Rear Light	LT EXT	18650	SF-0092-22	42/22
4680	Oakland Inner Harbor Light 10	MISSING/TRLB	18650	SF-0052-21	02/22
4684	Oakland Inner Harbor Turn Basin Light B	STRUCT DMGD/TRLB	18650	SF-0097-21	29/21
4740	San Leandro Bay Airport Channel Daybeacon 6	STRUCT DEST/TRUB	18650	SF-0033-22	15/22
4830	San Leandro Marina Channel Light 1	LT EXT/SS INOP		SF-0012-23	02/23
5430	Berkeley Marina Channel Light 2	LT EXT	18650	SF-0086-22	40/22
5485	San Francisco Bay North Channel Lighted Buoy 8	OFF STA	18653	SF-0016-23	03/23
5495	San Francisco Bay North Preferred Channel Lighted Buoy B	OFF STA	18653	SF-0033-23	05/23
5640	Southampton Shoal Channel Lighted Buoy 1	LT EXT	18653	SF-0014-23	02/23

5657	Southampton Shoal Channel Lighted Buoy 5	REDUCED INT	18649	SF-0038-23	06/23
5725	Richmond Harbor Channel Light 9	MISSING/TRLB	18649	SF-0098-22	43/22
5820	San Francisco Bay North Channel Lighted Bell Buoy 18	LT EXT	18649	SF-0101-22	44/22
5890	San Pablo Bay Preferred Channel Lighted Buoy E	OFF STA	18654	SF-0031-23	05/23
6095	Mare Island Strait Light 2	STRUCT DMGD/TRLB	18655	SF-0152-20	49/20
6240	Carquinez Strait Light 23	LT EXT	18656	SF-0008-23	02/23
6310	Suisun Bay Channel Buoy 3	OFF STA	18656	SF-0116-21	36/21
6433	Point Edith Crossing Range Front Light	STRUCT DEST/TRLB	18658	SF-0067-22	32/22
6505	Suisun Bay Channel Lighted Buoy 17	OFF STA	18658	SF-0128-21	02/22
6510	Suisun Bay Channel Lighted Buoy 19	LT EXT	18658	SF-0005-23	02/23
6685	San Joaquin River Light 8	STRUCT DMGD/TRLB	18656	SF-0109-21	02/22
6855	San Joaquin River Light 46	STRUCT DEST/TRLB	18661	SF-0057-22	28/22
7210	Sacramento River Deep Water Ship Channel Light 10	MISSING/TRLB	18656	SF-0101-21	32/21
7210	Sacramento River Deep Water Ship Channel Light 10	SINKING	18656	SF-0105-22	44/22
7235	Sacramento River Deep Water Ship Channel Light 15	MISSING/TRLB	18661	SF-0100-20	35/20
7240	Sacramento River Deep Water Ship Channel Light 16	STRUCT DEST/TRLB	18661	SF-0127-18	34/18
7255	Sacramento River Deep Water Ship Channel Light 19	LT EXT	18661	SF-0045-23	07/23
7260	Sacramento River Deep Water Ship Channel Light 20	MISSING/TRLB	18661	SF-0108-21	05/23
7485	Sacramento River Deep Water Ship Channel Light 62	REDUCED INT	18662	SF-0045-23	07/23
<b>7810</b>	<b>Bodega Harbor Channel Light 6</b>	<b>STRUCT DMGD/TRLB</b>		<b>SF-0028-21</b>	<b>08/23</b>
<b>7815</b>	<b>Bodega Harbor Channel Daybeacon 7</b>	<b>STRUCT DEST</b>		<b>SF-0046-23</b>	<b>08/23</b>
8085	Noyo River Entrance Lighted Bell Buoy 2	OFF STA	18620	HB-0005-23	05/23
8195	Humboldt Bay Lighted Buoy 9	LT EXT	18622	HB-0014-22	01/23
8360	Crescent City Harbor Lighted Whistle Buoy 2	LT EXT	18603	HB-0013-22	51/22
8475	Emerald Bay Entrance Buoy 4	OFF STA		SF-0037-23	06/23
8485	Lake Tahoe Lighted Danger Buoy Q	OFF STA		SF-0102-22	44/22

**DISCREPANCIES (FEDERAL AIDS) CORRECTED**

LLNR	Aid Name	Status	Chart No.	BNM Ref.	LNM St	LNM End
4175	San Francisco Main Ship Channel Lighted Buoy 4	WATCHING PROPERLY	18649	SF-0020-23	03/23	08/23

**DISCREPANCIES (PRIVATE AIDS)**

LLNR	Aid Name	Status	Chart No.	BNM Ref.	LNM St	LNM End
20	Ocean Beach Pier Fog Sound Signal	SS INOP	18765	SD-0002-19	05/19	
158	Scripps Waverider Lighted Research Buoy 092	OFF STA	18746		45/18	
505	Scripps Waverider Lighted Research Buoy 168	LT EXT	18620	HB-0003-22	14/22	
1665	Americas Cup Harbor Daybeacon 2	STRUCT DEST/TRUB	18773	SD-0001-22	02/22	
2056	Sweetwater Channel Light 6	STRUCT DEST	18773	SD-0087-22	47/22	
2070	Coronado Cays Channel Daybeacon 3	STRUCT DEST	18773	SD-0098-17	36/17	
2090	Coronado Cays Channel Light 7	STRUCT DEST/TRUB	18773	SD-0046-22	31/22	
2288	Scripps Waverider Lighted Research Buoy 220	OFF STA	18765	SD-0041-20	30/20	
2289.1	Scripps Waverider Lighted Research Buoy 100	OFF STA	18765		22/20	

2289.4	Scripps "CORDC" Lighted Research Buoy	MISSING	18765		22/20
2764.4	Catalina Sea Ranch SE Buoy	MISSING	18746	LA-0001-22	03/22
2871	Long Beach Harbor Brusco Lighted Mooring Buoy	LT EXT	18751	LA-0009-21	03/21
3339.2	REDONDO HARBOR LIGHT	LT EXT	18744	LA-0181-18	52/18
3400	El Segundo NRG Energy Buoy 6ES	SINKING	18744	LA-0153-21	39/21
3420	Hyperion Lighted Gong Buoy 10 ES	LT EXT	18744		16/20
3972.1	Monterey Harbor Junction Lighted Buoy A	Status Unreported	18685	SF-0039-23	06/23
4401	Richardson Bay Daybeacon 8	DAYMK DMGD	18653		15/20
4402	Richardson Bay Daybeacon 9	STRUCT DMGD	18649	SF-0086-18	23/18
4420	San Francisco-Oakland Bay Bridge Pier A Fog Signal	SS INOP	18650	SF-0034-23	06/23
4425	San Francisco-Oakland Bay Bridge Pier B Fog Signal	SS INOP	18650	SF-0034-23	06/23
4435	San Francisco-Oakland Bay Bridge Pier C East Side Fog Signal	SS INOP	18650	SF-0034-23	06/23
4445	San Francisco-Oakland Bay Bridge Pier D Fog Signal	SS INOP	18650	SF-0034-23	06/23
4460	San Francisco-Oakland Bay Bridge Pier E Fog Signal	SS INOP	18650	SF-0034-23	06/23
4576	South Beach Harbor North Entrance Light 2	LT EXT	18650	SF-0047-21	11/21
4577	South Beach Harbor North Entrance Light 1	LT EXT	18650	SF-0046-21	10/21
4578	South Beach Harbor South Entrance Light 1	LT EXT	18650	SF-0091-20	33/20
4826	Bay Farm Island Light 1	LT EXT	18650	SF-0014-19	05/19
4826.15	Bay Farm Island Light 3	LT EXT	18650	SF-0014-19	04/19
4826.2	Bay Farm Island Light 4	LT EXT	18650	SF-0136-21	44/21
4827.1	Anchorage 9 Lighted Mooring Buoy A	LT EXT	18650	SF-0012-20	04/20
4828.1	Anchorage 9 Lighted Mooring Buoy B	LT EXT	18650	SF-0013-20	04/20
5661	Southampton Shoal Outfall Lighted Buoy 1	LT EXT/RAC INOP	18653	SF-0026-19	07/19
5661	Southampton Shoal Outfall Lighted Buoy 1	MISSING/TRLB	18653	SF-0029-20	18/21
5661	Southampton Shoal Outfall Lighted Buoy 1	STRUCT DMGD	18653	SF-0126-22	52/22
5662	Southampton Shoal Outfall Lighted Buoy 2	LT EXT	18653	SF-0059-21	14/21
5877.2	San Rafael Rock Quarry Mooring Buoy C	MISSING	18653		36/18
6623	New York Slough Koch West Light	LT IMCH			39/18
6624	New York Slough Koch East Light	LT EXT			39/18
6645.5	Delta Diablo Outfall Lighted Buoy	LT EXT		SF-0005-22	02/22
8325	Pacific Gas and Electric Dike Light	LT EXT	18622	HB-0009-21	20/21
8591.1	Lake Tahoe NASA-JPL Lighted Research Buoy TB2	Status Unreported			37/22

**DISCREPANCIES (PRIVATE AIDS) CORRECTED**

LLNR	Aid Name	Status	Chart No.	BNM Ref.	LNM St	LNM End
------	----------	--------	-----------	----------	--------	---------

None

**PLATFORM DISCREPANCIES**

Name	Status	Position	BNM Ref.	LNM St	LNM End
------	--------	----------	----------	--------	---------

None

**PLATFORM DISCREPANCIES CORRECTED**

Name	Status	Position	BNM Ref.	LNM St	LNM End
------	--------	----------	----------	--------	---------

None

**SECTION III - TEMPORARY CHANGES and TEMPORARY CHANGES CORRECTED**

This section contains temporary changes and corrections to Aids to Navigation for this edition. When charted aids are temporarily relocated for dredging, testing, evaluation, or marking an obstruction, a temporary correction shall be listed in Section IV giving the new position.

**TEMPORARY CHANGES**

LLNR	Aid Name	Status	Chart No.	BNM Ref.	LNM St	LNM End
280	Point Sur Light	Reduced Intensity	18680	SF-0105-20	35/20	

**TEMPORARY CHANGES CORRECTED**

LLNR	Aid Name	Status	Chart No.	BNM Ref.	LNM St	LNM End
------	----------	--------	-----------	----------	--------	---------

None

**PLATFORM TEMPORARY CHANGES**

Name	Status	Position	BNM Ref.	LNM St	LNM End
------	--------	----------	----------	--------	---------

None

**PLATFORM TEMPORARY CHANGES CORRECTED**

Name	Status	Position	BNM Ref.	LNM St	LNM End
------	--------	----------	----------	--------	---------

None

**SECTION IV - CHART CORRECTIONS**

None

**SECTION V - ADVANCE NOTICES**

This section contains advance notice of approved projects, changes to aids to navigation, or upcoming temporary changes such as dredging, etc. Mariners are advised to use caution while transiting these areas.

**SUMMARY OF ADVANCED APPROVED PROJECTS**

<u>Approved Project(s)</u>	<u>Project Date</u>	<u>Ref. LNM</u>
None		

**Advance Notice(s)**

**NORTHERN CALIFORNIA-SAN FRANCISCO-SAN BRUNO SHOAL CHANNEL LT 1**

The U.S. Coast Guard is planning to install a Mariner Radio Activated Sound Signal (MRASS) device on San Bruno Shoal Channel Light 1 (LLNR 4945). This device will allow the mariner to activate the installed sound signal by keying on a VHF-FM radio microphone six times at the designated frequency for the AtoN (83A). Please direct questions, comments, or concerns no later than 23 May, 2023 to LT Miranda Brumbaugh at 510-437-2984 or Miranda.E.Brumbaugh@uscg.mil.

Chart 18654 LNM: 08/23

**SECTION VI - PROPOSED CHANGES**

Periodically, the Coast Guard evaluates its system of aids to navigation to determine whether the conditions for which the aids to navigation were established have changed. When changes occur, the feasibility of improving, relocating, replacing, or discontinuing aids are considered. This section contains notice(s) of non-approved, proposed projects open for comment. SPECIAL NOTE: Mariners are requested to respond in writing to the District office unless otherwise noted (see banner page for address).

**PROPOSED WATERWAY PROJECTS OPEN FOR PUBLIC COMMENT**

<u>Proposed Project(s)</u>	<u>Closing</u>	<u>Docket No.</u>	<u>Ref. LNM</u>
None			

**Proposed Change Notice(s)**

**CALIFORNIA-SAN FRANCISCO TO SAN DIEGO-REMOVAL OF RACONS ON AIDS TO NAVIGATION**

The U.S. Coast Guard will be removing the RACONS from aids to navigation located along the California Coast due to the consistent failure of the signals and that they are no longer considered necessary for safe navigation of the waterways. While there is no specific timeline for the removal of this equipment, it will be coordinated with servicing and discrepancy responses. The removal of the RACONS will be announced by Broadcast Notice to Mariners and published in the Local Notice to Mariners as Chart and Light List corrections. These aids to navigation are:

San Francisco Approach Lighted Whistle Buoy SF (LLNR 360): 37-44-59.761N 122-41-33.995W  
Harding Rock Lighted Buoy HR (LLNR 4330): 37-50-17.661N 122-26-45.579W  
Los Angeles Approach Channel Lighted Whistle Buoy 3 (LLNR 3107): 33-41-16.012N 118-14-24.050W  
Long Beach Channel Approach Lighted Whistle Buoy LB (LLNR 3010): 33-41-24.013N 118-11-01.050W  
San Diego Bay Approach Lighted Whistle Buoy SD (LLNR 10): 32-37-20.204N 117-14-45.177W

Mariners are requested to respond in writing to the Coast Guard District office with any comments on this change at D11-SMB-D11-LNM@uscg.mil. Any discrepancy for these or other Aids to Navigation should continue to be reported to the closest US Coast Guard Sector.

Charts: 18007 18010 18022 18640 18649 18650 18680 18746 18749 18765 18772 LNM: 05/23

#### **NORTHERN CALIFORNIA-MONTEREY-MONTEREY HARBOR LIGHT 6**

The U.S. Coast Guard is proposing to permanently discontinue the sound signal on Monterey Harbor Light 6 (LLNR 3970). The current aid is in the approximate position: 36-36-30N 121-53-22W. Direct any questions comments or feedback no later than 07 October, 2022 to LT Miranda Brumbaugh at 510-437-2983 or Miranda.E.Brumbaugh@uscg.mil.

Charts: 18680 18685 LNM: 28/22

---

## **SECTION VII - GENERAL**

This section contains information of general concern to the Mariners. Mariners are advised to use caution while transiting these areas.

---

#### **2021 COAST GUARD LIGHT LIST AVAILABILITY**

2021 Light Lists are available on the USCG Navigation Center's website at: <http://www.navcen.uscg.gov/?pageName=lightLists>. Coast Guard Light Lists are a means for communicating aids to navigation information to the maritime public. Local Notice to Mariners will continue to advise Light List corrections and NAVCEN will continue to publish a compilation of corrections. Complete versions of the 2021 Light Lists are updated weekly on the NAVCEN website and mariners should download applicable copies and updates as needed at: <http://www.navcen.uscg.gov/?pageName=lightListWeeklyUpdates>. A summary of weekly 2021 Light List corrections are available at: <https://www.navcen.uscg.gov/?pageName=lightListCorrections>.

LNM: 03/21

#### **ARIZONA/CALIFORNIA-COLORADO RIVER-BRIDGE**

INTERSTATE 8 BRIDGE (YUMA, AZ)-Repair work on the bridge will be conducted Monday through Friday, 6 a.m. to 3 p.m., 27 February, 2023 until 01 September, 2023. A 60 ft X 40 ft temporary trestle will be installed on the south bank of the river, beneath the bridge deck, extending 60 feet into the river. The channel ward ends of the trestle will be lighted at night with steady burning red lights (See I-8\_Trestle\_Lighting.pdf at the end of this notice.) For bridge condition updates, mariners can contact Caltrans at 858-688-1511 or 858-289-1269. Mariners are requested to transit the area with caution. For further information contact the Coast Guard Bridge Office at 510-437-3515.

LNM: 07/23

#### **ARIZONA/NEVADA-COLORADO RIVER-BRIDGE**

NEW LAUGHLIN-BULLHEAD CITY BRIDGE-In-water work continues on construction of the new bridge in position 35-03-17N 114-36-45W. Work is being conducted Monday through Friday, 0630 to 1430, until 03 Oct 23. The access pad on the Arizona side has been reduced exposing piers of the new bridge. The installation of an access pad and silt curtain on the Nevada side of the river is complete. The Arizona side exposed piers and upriver and downriver access pad and the Nevada side silt curtain anchors will be lighted at night with steady burning red lights (see RockAccessPad\_Lighting.pdf at the end of this notice). Approximately 117 feet of horizontal clearance will be provided in the center of the river during construction. Precast girders will be installed later in the project once construction of the respective abutments and piers are complete. For on-site conditions contact 702-455-6030 or 702-817-7088, or 702-286-0137. For further information contact the Coast Guard Bridge Office at 510-437-3515.

LNM: 50/22

#### **LOWER COLORADO RIVER - LAKE HAVASU, AZ – MARINE EVENT**

3 Disciplines will be sponsoring the Lake Havasu Triathlon on Saturday 18 March, 2023 from 7:30am to 9:00am. The event will involve approximately 350 swimmers racing on a course starting at Lake Havasu State Park Beach, down Bridgewater Channel and returning to Lake Havasu State Park Beach. Mariners are requested to transit the area with caution. For more details or comments contact Kenny Krell at 810-965-5460.

LNM: 06/23

#### **LOWER COLORADO RIVER- LAKE HAVASU-MARINE EVENT**

RPM Racing Enterprises will be sponsoring the Mark Hahn Memorial 300 Mile Personal Watercraft (PWC) Endurance Race on 25 February, 2023 from 7:00am to 6:00pm. A make-up day will take place on 26 February, 2023, if needed due to inclement weather. The event will consist of approximately 60 participants on PWCs racing on a 10-mile loop starting off Point Beach at Lake Havasu State Park. A special local regulation will be enforced for this event. Non-participants will be prohibited from entering or blocking the event course while the event is taking place. Mariners are requested to transit the area with caution. For more information or comments contact Ross Wallach at 310-318-4012.

LNM: 06/23

#### **LOWER COLORADO RIVER-LAKE HAVASU, AZ-MARINE EVENT**

Kayak Bass Fishing, LLC will be sponsoring the Kayak Bass Fishing Catch Photo Release Tournament on 26 March, 2023 until 26 March 2023 in Lake Havasu from 6:00am to 3:00pm each day. The event will involve approximately 100 participants fishing in various parts of the lake, all public launch ramps will be utilized for the tournament. Mariners are requested to transit the area with caution. For more details or comments contact Bryce

**LOWER COLORADO RIVER-LAKE HAVASU, AZ-MARINE EVENT**

Gibbs at 602-516-2370.

LNM: 06/23

**LOWER COLORADO RIVER-LAKE HAVASU-MARINE EVENT**

International Water Ski Racing Association will be sponsoring the International Open Water Ski Race on 11 March, 2023 until 12 March, 2023 from 8:00am until 5:00pm each day. The event will involve approximately 25 vessels pulling water-skiers on a closed course in the vicinity of the Havasu Springs Resort. Mariners are requested the transit the area with caution. For more details or comments contact Brian Vesely at 982-208-2263.

LNM: 08/23

**LOWER COLORADO RIVER-LAKE HAVASU-MARINE EVENT**

Jet Jam Racing will be sponsoring the Best of the West Series Kickoff personal watercraft (PWC) race on 3 March, 2023 until 5 March, 2023 from 6:00am to 6:00pm each day. The event will involve approximately 120 participants racing on a closed course in the vicinity of Windsor State Park. Mariners are requested to transit the area with caution. For more details or comments contact Monte Hughes at 360-349-1341.

LNM: 06/23

**LOWER COLORADO RIVER-PARKER-MARINE EVENT**

The Arizona Drag Boat Association will be sponsoring the Thunder on the River powerboat races on 31 March, 2023 until 2 April, 2023 from 8:00am to 5:30pm. The event will involve 100 participants racing on a 1000-foot course in the vicinity of La Paz County Park. Mariners are requested to transit the area with caution. For more details or comments contact Jeremy Denny at 602-614-0560.

LNM: 06/23

**NORTHERN CALIFORNIA-ALAMEDA TO PIONEER SEAMOUNT AREA-SEA TRIALS**

SAILDRONE, INC. is conducting offshore oceanographic research survey testing and will operate up to five Unmanned Surface Vehicles called SAILDRONE VOYAGER until 31 March, 2023, in the Pioneer Seamount area. The operations will be conducted within the following coordinates:

Survey Site 1:

37-26-20N 122-59-50W

37-26-20N 122-52-50W

37-22-20N 122-52-50W

37-22-20N 122-59-50W

Survey Site 2:

37-25-20N 123-19-50W

37-25-20N 123-01-50W

37-15-20N 123-01-50W

37-15-20N 123-19-50W

The saildrone is 30 feet long, 18 feet tall, painted orange and marked SAILDRONE. The Saildrone will broadcast AIS and travel at a speed of 7 knots. Mariners are requested to transit the area with caution and maintain a 500 meters separation from the Saildrone. For more details or comments contact Saildrone mission control at 510-722-6070.

Charts: 18640 18680

LNM: 51/22

**NORTHERN CALIFORNIA-ALCATRAZ ISLAND-MARINE CONSTRUCTION**

Manson Construction Co. will be conducting marine construction to the wharf at Alcatraz Island at 37-49-36N 122-25-15W. Construction will begin on 23 January, 2023 and be completed on 04 October, 2025. During construction DB HAGAR will be utilizing divers during low tide. Tug WESTAR will be assisting DB HAGAR and monitoring VHF-FM Chan. 13 and 16. Mariners are requested to transit the area with caution. For more details or comments contact Matt Lehmann at 510-529-1583.

Chart 18653

LNM: 50/22

**NORTHERN CALIFORNIA-DELTA & RIVERS-AMERICAN RIVER-BRIDGE**

CAPITAL CITY HWY (Route 51) BRIDGE-Caltrans is conducting rehabilitation of the bridge until 27 June, 2025. Work will be conducted during daylight hours, 7am to 5:30pm, Monday through Friday, and will include the use of barges, work boats, tugboats, turbidity curtains, and access piers. (See AmRiv\_SiltCurtain\_BargeLocation.pdf in the enclosure section.). During the workday, barges can be moved for the safety of navigation with one hour notice to the contractor via VHF-FM CH 16 or by cell at 916-532-8208. Mariners should contact the contractor before transiting the bridge to determine location of turbidity curtains. Barges will be unmanned and moored at their work locations overnight. Each corner of each barge will be lighted at night with steady burning red lights. At least 25 feet of horizontal clearance for navigation will be available at all times. Mariners are requested to transit the area with caution. For further information, contact the Coast Guard Bridge Office at 510-437-3461.

Chart 18662

LNM: 23/22

**NORTHERN CALIFORNIA-DELTA & RIVERS-MOKELUMNE RIVER-BRIDGE**

MOKELUMNE RIVER BRIDGE (HWY 12)-Rehabilitation of the bridge continues, Monday through Friday, 7 am to 5 pm, 15 December, 2022 until 21 March, 2023. Floating equipment utilized during the entire project will include a 40' x 80' spudded crane barge, a 28' x 40' supply barge, a 20' push boat, and a 16' skiff boat. The barges will be anchored in either navigational channel next to the bridge during the work day and will be left on-scene unmanned overnight. Each corner of each barge will be lighted at night. (See MokeRiverBridge\_RehabBargeLights.pdf for typical location and lighting diagram.) Lighted buoys will be deployed to direct mariners to the side of the bridge were no work is being conducted. For navigational safety and to request an opening of the swing span during the project, the bridge will open on signal and the barges moved Monday through Friday 7 am to 5 pm, if at least 4-hours notice is given to the bridge owner and at all other times the bridge will open on signal and the barges moved if at least 10-hours notice is given to the bridge owner. For on-scene conditions, mariners can contact the contractor at 510-774-1204 or 925-658-2672. For further information, contact the Coast Guard Bridge Office at 510-437-3461.

Chart 18661

LNM: 51/22

**NORTHERN CALIFORNIA-DELTA & RIVERS-OLD RIVER-BRIDGE**

CA ROUTE 4 BRIDGE- Critical bridge rehabilitation is taking place 7am to 3:30pm Monday through Friday. The drawspan is secured in the closed-to-navigation position from 27 Oct, 2022 until 23 Apr, 2023. The swing span WILL NOT open for the passage of vessels. A 40'x80' work barge will be employed and tied to one of the bridge piers during this time. Mariners can transit through the construction site at the western most span, between the west bank and Pier 2, or other spans not being occupied by the work barge. For navigational safety, during normal work hours the



**NORTHERN CALIFORNIA-DELTA & RIVERS-OLD RIVER-BRIDGE**

barge can be moved with 4 hours advance notice by contacting the contractor. At other times, the barge can be moved with 24hrs advance notice. Each corner of the moored barge will be lighted at night with steady burning red lights (See OldRiver\_Barge\_Lighting\_Plan.pdf in the enclosure section). In the closed position, the bridge provides 12' vertical clearance above mean high water. Vessels able to transit the bridge while closed can continue to do so at any time. For conditions at the work site, mariners can contact the contractor at 209-513-7309 or 415-375-5549; or Caltrans at 209-470-8835 or 209-465-0935. For further information, contact the Coast Guard Bridge Office at 510-437-3461.

Chart 18661

LNM: 44/22

**NORTHERN CALIFORNIA-DELTA & RIVERS-SACRAMENTO RIVER-BRIDGE**

RIO VISTA BRIDGE-Caltrans continues major rehabilitation work on the bridge. Therefore, from 6 a.m. on 14 November 22 until 6 p.m. on 03 March 23, the lift span of the bridge will open on signal if at least a 4-hour notification is given to the drawtender. For further information contact the Coast Guard Bridge Office at 510-437-3516.

Chart 18661

LNM: 49/22

**NORTHERN CALIFORNIA-DELTA & RIVERS-SACRAMENTO RIVER-BRIDGE**

RIO VISTA BRIDGE-The upriver and downriver green center channel lights on the lift span are not operational. The red center channel lights show at all times, even when the span is in the fully open-to-navigation position. The bridgetender will be able to inform any vessel requesting an opening when the lift span is fully open. Estimated time of repair is unknown. For further information contact the Coast Guard Bridge Office at 510-437-3516.

Chart 18661

LNM: 49/22

**NORTHERN CALIFORNIA-DELTA & RIVERS-SACRAMENTO RIVER-BRIDGE**

REPLACEMENT BUTTE CITY BRIDGE- Replacement bridge construction continues Monday through Friday during daylight hours until 30 September, 2024. Installation of a temporary trestle has begun. Once trestle is in place, falsework will be installed. A temporary navigation span during construction will be just west of the existing bridge's pivot pier, 435 feet west of new bridge abutment, and is lighting at night with a green center channel light on the upriver and downriver portion of the trestle. Red lights will mark low steel of the remaining spans of the trestle. A buoy line will be installed, pending Coast Guard approval, to guide vessels through the bridge construction area (see ButteConstructionLighting-BuoyLine.pdf enclosure at the end of this notice). The temporary navigation span will provide at least 32 feet of horizontal clearance and 14 feet of vertical clearance from ordinary high water to low steel of the temporary trestle. For on-scene conditions contact Golden State Bridge, Inc, at 415-720-6577 or 925-260-0403 or Caltrans at 530-941-8272 or 530-682-3931. For further information contact the Coast Guard Bridge Office at 510-437-3461.

LNM: 42/22

**NORTHERN CALIFORNIA-DELTA & RIVERS-SACRAMENTO RIVER-BRIDGE**

TOWER DRAWBRIDGE- The drawspan will be secured in the closed-to-navigation position from 8am-11:15am on March 11, 2023, and from 7am-1pm on March 12, 2023, to allow community participation in the Shamrock'n 5K/10K and Half Marathon events. In the case of an emergency, the drawspan can be operated normally. The bridge provides 30' vertical clearance above mean high water when closed. Vessels that can transit the bridge in the closed position may continue to do so at any time. For more details or comments, contact the Coast Guard Bridge Office at (510) 437-3461.

Chart 18662

LNM: 06/23

**NORTHERN CALIFORNIA-DELTA & RIVERS-SAN JOAQUIN RIVER-BRIDGE**

CROWS LANDING ROAD BRIDGE- Replacement of the bridge is ongoing. Work is being conducted Monday through Friday 0600 to 1600 until 01 Sep 23. A temporary bridge, with a removable span, will be installed to facilitate construction. With the span removed, the temporary bridge will provide, at a minimum, 15 feet of horizontal clearance. The span will be removed after normal working hours. Temporary falsework will be installed to facilitate construction. The temporary falsework's navigation span will provide 16 feet of vertical clearance at Ordinary High Water when the temporary bridge's removable span is removed. Upriver and downriver red channel margin lights and green center channel lights will mark the temporary navigation span at night. To view the temporary navigation span and lighting, see the TemporaryBridge\_FalseworkLighting.pdf enclosure at the end of this notice. Mariners are requested to use extreme caution when transiting the work site. For conditions at the project site mariners can contact the contractor at 916-869-8210 or 559-593-5182. For further information contact the Coast Guard Bridge Office at 510-437-3461.

LNM: 36/22

**NORTHERN CALIFORNIA-GULF OF THE FARALLONES -BUOY DEPLOYMENT**

Sofar Ocean Technologies will be deploying a buoy in Gulf of the Farallones at 37-45-00N 122-50-18W until 28 February, 2023. A 19 foot C-Dory (CF3571SX) will deploy a yellow buoy FI Y 2.5s to test an oceanographic buoy system. The C-Dory will be monitoring VHF-FM Chan. 16. Mariners are requested to transit the area with caution. For more details or comments contact Colin Browser at 206-972-7830.

Chart 18640

LNM: 35/22

**NORTHERN CALIFORNIA-HALF MOON BAY-SUNKEN VESSEL**

The Coast Guard received a report of a sunken towing vessel in the Pillar Point Harbor at position 37-29-42N 122-29-35W. The T/V CALEB is 94' long, with approximately 3/4 of the vessel visible above the waterline. The vessel is situated on the western side of the harbor with yellow boom surrounding it. Mariners are advised to exercise due caution while transiting in the area. For more details or comments contact LT William Harris at 415-399-7443 or SFWaterways@uscg.mil.

LNM: 23/22

**NORTHERN CALIFORNIA-HUMBOLDT BAY-SEASONAL AID DISCONTINUANCE**

Humboldt Bay Lighted Bell Buoy 2 (LLNR 8135) has been temporarily discontinued for the 2022-2023 winter season until May 2023. The buoy is scheduled for re-establishment and will be back on-station May 2023. A Synthetic AIS for the aid position is active and will be available year-round for this aid position. For more details or comments contact LCDR Paul Garcia at 510-437-2982 or Paul.A.Garcia2@uscg.mil.

Charts: 18620 18622

LNM: 40/22

**NORTHERN CALIFORNIA-MARE ISLAND-DREDGE OPERATIONS**

**NORTHERN CALIFORNIA-MARE ISLAND-DREDGE OPERATIONS**

Manson Construction Co. will conduct dredge operations in the vicinity of the Wichels Causeway from 15 October, 2022 until 01 March, 2023. Manson 75 Barge will be pumping dredged materials inland at 38-07-15N 122-16-54W and Derrick Barge EINAR at 38-06-33N 122-16-33W. Operations will be conducted 24 hrs daily. Mariners are requested to transit the area with caution. For more details or comments contact Egli Nicole at 562-400-3309.

Chart 18655

LNM: 40/22

**NORTHERN CALIFORNIA-MOKELUMME RIVER-ANDRUS ISLAND-SUNKEN VESSEL**

The Coast Guard received a report of a sunken partially burned houseboat in the vicinity of Rancho Harbor Marina at position 38-06-30N 121-34-34W. The houseboat is approx. 30 ft long, with none of the vessel visible above the waterline. Mariners are advised to exercise due caution while transiting in the area. For more details or comments contact LT William Harris at 415-399-7443 or SFWaterways@uscg.mil.

Chart 18661

LNM: 50/22

**NORTHERN CALIFORNIA-MONTEREY BAY-SURVEY OPERATIONS**

SAILDRONE, INC. will be conducting oceanographic survey operations and will operate an Unmanned Surface Vehicle called Sairdron from 1 February, 2023 until 28 February, 2023. The operations will be bounded by the following coordinates:

36-45-12N 122-13-49W

36-45-12N 122-08-36W

36-39-54N 122-08-36W

36-39-54N 122-13-49W

Sairdron is 23 ft long, 16 ft tall, painted orange with a white all around light on top and marked 'SAILDRONE '. For further information see enclosure MONTEREY BAY-SURVEY OPERATIONS below. Mariners are requested to transit the area with caution. For more details or comments contact Sairdron mission control at 510-722-6070.

Chart 18685

LNM: 04/23

**NORTHERN CALIFORNIA-NAPA RIVER-LIGHT OBSTRUCTION**

A large tree obstruction is stuck in the mud directly in front of Napa River Light 30 (LLNR 6207). Mariners are requested to transit the area with caution and consider this obstruction during inbound and outbound transits.

Chart 18654

LNM: 40/22

**NORTHERN CALIFORNIA-OAKLAND INNER HARBOR-BRIDGE**

FRUITVALE AVE RAIL BRIDGE-The lift span of the rail bridge is kept in the partially opened position providing 80 feet of vertical clearance at mean high water. Due to electrical issues, the lift span cannot be lifted to its fully open-to-navigation position of 135 feet above Mean High Water. Repairs are ongoing, estimated time of completion is unknown.

When the lift span of the railroad bridge is in the partially open position and the bascule span of the adjacent highway bridge is in the closed position, the lift span will show two red 180-degree center span lights on the upstream and downstream lower edge of the span. When the bascule span of the highway bridge is in the fully opened position, the lift span of the railroad bridge will show two 360-degree green lights, providing a range for the centerline of the channel between both highway and railroad bridges. For further information contact the Coast Guard Bridge Office at 510-437-3516.

Chart 18649

LNM: 08/23

**NORTHERN CALIFORNIA-OFFSHORE CAPE MENDOCINO-SURVEY OPERATIONS**

SAILDRONE, INC. is conducting oceanographic survey operations and will operate an Unmanned Surface Vehicles called Sairdron from 23 January, 2023 until 28 February, 2023. The operations will be conducted 150 miles offshore Cape Mendocino and bounded by the following coordinates:

NW: 39-51-35N 129-21-54W

NE: 40-28-30N 128-12-06W

SW: 36-22-18N 125-16-24W

SE: 37-11-12N 124-17-48W

The saildrone is 72 feet long, 45 feet tall, painted orange with a tri-color light on top and marked SAILDRONE SURVEYOR. For further information see enclosure CAPE MEDOCINO-SURVEY OPERATIONS.pdf below. Mariners are requested to transit the area with caution. For more details or comments contact Sairdron mission control at 510-722-6070.

Charts: 18620 18623 18640

LNM: 04/23

**NORTHERN CALIFORNIA-OFFSHORE MONTEREY BAY-UNDERWATER OPERATIONS**

Reef Check Foundation have deployed underwater equipment offshore Monterey Bay, CA within the following coordinates:

36-36-17N 121-52-46W

36-36-18N 121-52-49W

36-36-15N 121-52-50W

36-36-14N 121-52-46W

All equipment will be established until 24 Mar 24. Mariners are requested to transit the area with caution and avoid anchoring within the coordinates listed above. For more details or comments contact Dan Abbot at 510-684-7835.

Chart 18685

LNM: 12/21

**NORTHERN CALIFORNIA-OFFSHORE MOSS LANDING-SCIENTIFIC OPERATIONS**

The Monterey Bay Aquarium Research Institute (MBARI) will be conducting 24hrs a day autonomous, unmanned maritime vehicle operations of two Liquid Robotics, Inc. Wavegliders (www.liquidr.com), from 09 January, 2023 until 31 December, 2023. (MBARI) will deploy the vehicles in the vicinity of Moss Landing. Operations will be between 36-18-00N 122-58-59W and 37-12-00N 122-58-59W. Wave Glider carries no fuel, lubricants, or hydrocarbons, is wave powered, remotely attended from MBARI moving at speeds of 1kt, and designed to give way or part if encountered by a vessel. It is approximately 8ft by 2ft (surfboard size), yellow/copper in color, with a contact plaque and mast extending 3ft above the water surface supporting a flag. Mariners are requested to transit the area with caution. For more details or comments contact MBARI at 831-775-1700, waveglider@listserv.mbari.org, or Liquid Robotics 24/7 WGOC Operations at 888-574-4574, 1-408-636-4205.

Charts: 18680 18685

LNM: 02/23

**NORTHERN CALIFORNIA-OLD RIVER-HAZARD TO NAVIGATION**

The Coast Guard has received a report of downed powerlines in Old River from Mandeville Island to Webb Tract. The downed powerlines have been cut by PG&E and remain laying on the bottom of Old River. Mariners are recommended to avoid anchoring in the area and transit the area with caution. For details or comments contact Coast Guard Sector San Francisco Waterways at 510-612-9729.

Chart 18661

LNM: 01/23

**NORTHERN CALIFORNIA-PEYTONIA SLOUGH-SUISUN CITY-SUNKEN VESSEL**

The Coast Guard received a report of a sunken vessel in the vicinity of Peytonia Slough State Marine Park in the Peytonia Slough at 38-13-35N 122-02-17W. The vessel is not visible above the waterline, it is situated in the middle of the channel, and has been marked with a red buoy. Mariners are advised to exercise due caution while transiting the area. For more details or comments contact LT Miranda Brumbaugh at 510-437-2978 or Miranda.E.Brumbaugh@uscg.mil.

Chart 18656

LNM: 27/22

**NORTHERN CALIFORNIA-SACRAMENTO RIVER-RANDALL ISLAND-OVERTURNED VESSEL**

The Coast Guard received a report of a partially overturned pleasure craft in the vicinity of Randall Island at position 38-20-34.8N 121-33-37.2W. The vessel is approx. 20ft long, with approx. 50 percent of the vessel visible above the waterline. Mariners are advised to exercise due caution while transiting in the area. For more details or comments contact LT William Harris at 415-399-7443 or SFWaterways@uscg.mil.

Chart 18662

LNM: 50/22

**NORTHERN CALIFORNIA-SACRAMENTO RIVER-REDUCED VERTICAL CLEARANCE**

Overhead power cables upstream of Sacramento River at 38-03-54N 121-47-09W have a reported reduced vertical clearance to 119.5'.

LNM: 22/16

**NORTHERN CALIFORNIA-SACRAMENTO RIVER-SAN JOAQUIN RIVER-GEOTECHNICAL DRILL TESTING**

Gregg Drilling and Testing will be conducting Overwater Geotechnical Investigations on the Sacramento River at 38-23-43N 121-30-44W, the San Joaquin River to Mokelumne River between 38-12-48N 121-29-43W and 37-54-20N 121-29-57W. R/V QUIN DELTA will be conducting the operations and monitoring VHF-FM Chan. 13, 14 and 16. Mariners are requested to transit the area with caution. For more details or comments contact Captain Tim O'Donnell at 949-254-5190 or at BEARatSEA@gmail.com.

Charts: 18010 18661 18680

LNM: 36/22

**NORTHERN CALIFORNIA-SACRAMENTO RIVER-SUNKEN VESSEL**

The Coast Guard received a report of a sunken vessel in the Sacramento River in approximate position 38-36-21N 121-31-12W. The vessel is approximately 16 feet long, and sits in 16 – 20 feet of water. Mariners are advised to exercise due caution while transiting in the area. For more details or comments contact USCG Sector San Francisco Waterways at 415-399-7443 or SFWaterways@uscg.mil.

Chart 18664

LNM: 36/22

**NORTHERN CALIFORNIA-SAN FRANCISCO BAY-BRIDGE**

SAN MATEO-HAYWARD BRIDGE – The painting of the steel towers continues. Work is being conducted Monday through Friday, 7am to 12am until June 2024. Temporary worker platforms will be installed around the base of piers 2 to 11 and 28-37, reducing horizontal clearance in each of those spans by 6 feet. Temporary underdeck work platforms will be installed in spans 12-18 and 21-27, reducing the vertical clearance by three feet. Tarpaulins will be used as containment around all pier columns. An Andersen under-bridge below-deck worker access vehicle will be used during the installation of the temporary containment and temporary platforms. At no time will in-water work be conducted in the main navigation span between piers 19-20, and mariners should this span at all times during this project. For conditions at the bridge, mariners can contact the contractor at 407-489-5386, 303-579-1383, or 910-279-3365. For further information contact the Coast Guard Bridge Office at 510-437-3515.

LNM: 46/22

**NORTHERN CALIFORNIA-SAN FRANCISCO BAY-BRIDGE**

RICHMOND-SAN RAFAEL BRIDGE-Concrete/steel repairs and cleaning of the bridge are in progress. Work is being conducted Monday through Friday, 0500 to 1700, until 01 May 23. Temporary underdeck platforms have been installed from the western shore to pier 33 and between piers 43-46 reducing vertical clearance in each span by three feet. The upstream and downstream lower edge of each temporary platform is lighted at night with steady burning red lights (see R-SR\_Bridge\_Temp\_Platform\_Lighting.pdf at the end of this notice.) Two 160' X 50' barges and one 110' X 32' barge are being used to assist in the installation of the platforms and for the blasting and painting. One barge has been secured to pier 8 and will be left on-scene, overnight, unmanned. The outboard corners of the barge at pier 8 is lighted at night with steady red lights. Barge "37" and barge "32" can be contacted on VHF-FM Ch. 16, 13 and 14. At no time will the work impede the east or west navigation spans or their auxiliary spans. For conditions at the bridge, mariners can contact the contractor at 860-904-8787 or 443-847-6286. For further information concerning this project contact the Coast Guard Bridge Office at 510-437-3515.

Chart 18653

LNM: 16/21

**NORTHERN CALIFORNIA-SAN FRANCISCO BAY-BRIDGE**

SAN MATEO/HAYWARD BRIDGE-Caltrans will be conducting dive operations on all piers of the bridge from 7:00am to 4:30pm from 27 February through 03 March, 2023. The dive vessel is a 33' aluminum landing craft with heavy equipment on the deck. Diver's umbilical hose may be floating at or near the surface, adjacent to the vessel. All approaching vessels should contact the vessel, "Official Business", on VHF-FM CH 16 or by cell 805-748-6011, approximately 30 minutes before transiting the bridge dive site. Mariners are requested to transit the area with caution. For further information, mariners can contact the Coast Guard Bridge Office at 510 437-3516.

LNM: 08/23

**NORTHERN CALIFORNIA-SAN FRANCISCO BAY-BRIDGE**

SAN MATEO-HAYWARD BRIDGE-Work is continues on the causeway portion of the bridge, east of pier 38, 0700 to 1530, Monday through Friday, until 11 May, 2023. Various size barges will be used during the project, the largest being a 100' X 20' flexifloat barge. During the work day, barges will either be spudded down or tied to the bridge piers, no anchors or anchor line will be utilized. After regular working hours the unmanned barge will be left on-site. For the safety of navigation, the barges can be moved with one-hour advance notice. For conditions at the bridge mariners can contact Golden State Bridge, Inc., on VHF-FM Marine Radio Channels 13, 14, and 16 or by cell phone at 707-246-0725, 925-260-2104, or 925-382-7288. For more details or comments contact the Coast Guard Bridge Office at 510-437-3515.

**NORTHERN CALIFORNIA-SAN FRANCISCO BAY-BRIDGE**

LNM: 20/22

**NORTHERN CALIFORNIA-SAN FRANCISCO BAY-BRIDGE**

GOLDEN GATE BRIDGE-Four 54' temporary under deck platforms; two 475' and 2,075' north of the south tower, and two 175' and 675' south of the north tower have been installed at the bridge. Temporary platforms reduce vertical clearance at the bridge by no more than 14'. The bridge's maintenance travelers are in use during the project and will remain outboard of the furthest north and furthest south temporary platforms. The temporary platforms and maintenance travelers are lighted at night with all-round red lights (see PlatformLighting\_GG\_Bridge\_14Jun22.pdf at the end of this notice). For navigational safety the maintenance travelers can be moved by contacting the Golden Gate Bridge at 415-923-2220. Work is being conducted Monday through Saturday, 0700-1700 and 2100-0500. For conditions at the bridge, mariners can contact the contractor at 415-716-0384. For more details or comments contact the Coast Guard Bridge Office at 510-437-3516.

Chart 18649

LNM: 24/22

**NORTHERN CALIFORNIA-SAN FRANCISCO BAY-DETERIORATING CONCRETE PILINGS**

Deteriorating concrete pilings above and below the waterline are present in the vicinity of the the south edge of Southampton Shoal Light (LLNR 5480). Mariners are requested to transit the area with caution. For more details or comments contact LT Miranda Brumbaugh at 510-437-2978 or Miranda.E.Brumbaugh@uscg.mil.

Chart 18649

LNM: 23/15

**NORTHERN CALIFORNIA-SAN FRANCISCO BAY-HAZARD TO NAVIGATION**

There is a potential hazard to navigation in the San Francisco Bay located at 37-54-06N 122-23-56W. The obstruction is an unmarked barge mooring platform. Mariners are requested to transit the area with caution. For more details or comments contact Sector San Francisco Waterways at 415-399-7442.

Chart 18653

LNM: 42/22

**NORTHERN CALIFORNIA-SAN FRANCISCO BAY-OAKLAND INNER HARBOR-SHOALING**

Shoaling has been reported on the south side of Oakland Inner Harbor South Channel in the east passage through the Fruitvale Ave. Bridge. Mariners are requested to transit the area with caution and report any observed changes in shoaling conditions to the San Francisco VTS on VHF-FM Chan. 14. For more details or comments contact U.S. Coast Guard Sector San Francisco Waterways Management at 415-399-7443.

Chart 18650

LNM: 16/15

**NORTHERN CALIFORNIA-SAN FRANCISCO BAY-SURVEY OPERATIONS**

SAILDRONE, INC. is conducting oceanographic survey operations and will operate an Unmanned Surface Vehicles called Saildrone until 31 March, 2023. The operations will be conducted 0.8 nm South of General Anchorage 9 in San Francisco Bay and bounded by the following coordinates:

- Area 1:
- 37-26-20N 122-59-50W
- 37-26-20N 122-56-50W
- 37-22-20N 122-52-50W
- 37-22-20N 122-59-50W
- Area 2:
- 37-25-20N 123-19-50W
- 37-25-20N 123-01-50W
- 37-15-20N 123-01-50W
- 37-15-20N 123-19-50W

The saildrone is 30 feet long, 18 feet tall, painted orange with a tri-color light on top and marked SAILDRONE. Mariners are requested to transit the area with caution. For more details or comments contact Saildrone mission control at 510-722-6070.

Chart 18649

LNM: 51/22

**NORTHERN CALIFORNIA-SAN FRANCISCO BAY-TREASURE ISLAND-SUNKEN VESSEL**

The Coast Guard received a report of a sunken vessel in the North West corner of Treasure Island at 37-49-41N 122-22-50W and is in approximately 40ft of water with the mast visible above water. Mariners are advised to exercise due caution while transiting in the area. For more details or comments contact USCG Sector San Francisco Waterways at 415-399-7443 or SFWaterways@uscg.mil.

Chart 18650

LNM: 06/23

**NORTHERN CALIFORNIA-SAN LEANDRO BAY-BRIDGE**

BAY FARM ISLAND HIGHWAY AND PEDESTRIAN BRIDGES-The pier protection system at the bridges have deteriorated and may not offer adequate protection for the bridges as well as vessels transiting the bridge. Mariners are urged to transit both bridges with caution. The bridge owner is in the process of designing a replacement pier protection system. For more details or comments contact the Coast Guard Bridge Office at 510-437-3514.

Chart 18649

LNM: 31/22

**NORTHERN CALIFORNIA-SAN LORENZO RIVER-BRIDGE**

LAUREL STREET BRIDGE- A new water conveyance pipeline is being installed. To conduct the work, a bucket truck on the bridge deck will be utilized to suspend a mobile platform from the side of the bridge, vertical clearance will be temporarily reduced by 6-feet. Work is being conducted Monday through Friday, 7 am to 4:30pm, until 17 March, 2023. There will be no in-water work or equipment used during this project. Mariners are urged to use caution while transiting the bridge. For further information contact the Coast Guard Bridge Office at 510-437-3515.

Chart 18685

LNM: 02/23

**NORTHERN CALIFORNIA-SAN PABLO BAY-TORMEY-MARINE CONSTRUCTION**

The Dutra Group will be conducting marine construction to the Phillips 66 San Francisco Refinery located West of the Carquinez Bridge from 03 January, 2023 until 31 December, 2023, during daylight hours. Construction will be bounded by the following coordinates:

- 38-03-22N 122-15-52W
- 38-03-25N 122-15-33W

**NORTHERN CALIFORNIA-SAN PABLO BAY-TORMEY-MARINE CONSTRUCTION**

38-03-06N 122-15-34W  
38-03-06N 122-15-39W

Crane barge 1, along with a work boat, will be conducting operations and monitoring VHF-FM Chan. 9, 16, and 77. Mariners are requested to transit the area with caution. For more details or comments contact Nicholas Dino at 707-389-0505.

Charts: 18654 18655

LNM: 51/22

**NORTHERN CALIFORNIA-SANTA CRUZ HARBOR-SHOALING**

As of 9 January, 2023, there is significant shoaling reported in Santa Cruz Harbor caused by weather event in the area. Shoaling reduces charted depth at the entrance and various locations of the harbor. Vessel operators should consider this information for inbound and outbound transits or avoid area until sufficient draft clearances are made available. For latest update on conditions, the Santa Cruz Harbor Office can be contacted at 831-475-6161 or 831-471-1131 as well as VHF-FM Chan. 09 or 16.

Chart 18685

LNM: 02/23

**NORTHERN CALIFORNIA-SANTA CRUZ-DREDGE OPERATIONS**

The Santa Cruz Port District is conducting dredging operations in the harbor entrance from 15 November, 2022 until 30 April, 2023. A submerged dredging equipment may be in vicinity of the entrance. All mariners entering the Santa Cruz Harbor are requested to contact the dredge TWIN LAKES on VHF-FM Chan. 8 during working hours of 7:00am to 4:00pm Monday through Friday to obtain safe passage information. For information after hours please contact the Santa Cruz Harbor Patrol at 831-475-6161 or 831-471-1131. Mariners are requested to transit the area with caution. For more details or comments contact Blake Anderson at 831-475-6161.

Chart 18685

LNM: 45/22

**NORTHERN CALIFORNIA-SUISUN BAY-HAZARD TO NAVIGATION**

The Coast Guard has received a report of an uncharted private aid in Suisun Bay between Suisun Bay Channel Lighted Buoy 20 (LLNR 6525) and Suisun Bay Channel Lighted Buoy 22 (LLNR 6540) in approximate position 38° 03'30.3" N 121° 59' 18.9" W. This private aid is a single pile structure with "Danger" markings and may be unlit or displaying a yellow light. Mariners are advised to use caution when transiting the area. For more details or comments contact Coast Guard Sector San Francisco Waterways at 510-612-9729.

Chart 18656

LNM: 04/23

**NORTHERN CALIFORNIA-SUISUN BAY-MONTEZUMA SLOUGH-MARINE CONSTRUCTION**

The California Department of Water Resources advises that will be installing flashboards at the Suisun Marsh salinity control structure, located 2.2 nautical miles from the easterly end of Montezuma Slough at 38-05-36N 121-53-07W. Mariners are advised to use the boat lock. The boat lock signal is a standard traffic light and the operator will monitor VHF-FM Chan. 13. Mariners are requested to transit the area with caution. For more details or comments contact Ian Uecker at 916-574-2991.

Chart 18656

LNM: 34/21

**SAN DIEGO-OCEANOGRAPHIC SURVEY-OCEAN MONITORING**

The City of San Diego Marine Biology Lab is conducting year-round ocean monitoring sampling in the vicinity of the South Bay Ocean Outfall and Point Loma Ocean Outfall. The Ocean Monitoring Program conducts trawl sampling, benthic sampling with a double Van Veen sediment grab, vertical CTD casts and horizontal tows with an undulating underwater vehicle, ROV surveys and multiple moorings are deployed in the region below. Ocean sampling will be conducted in an area bound by the following coordinates:

- 32-31-54N 117-11-11W
- 32-32-10N 117-11-57W
- 32-32-03N 117-12-06W
- 32-32-33N 117-11-56W
- 32-40-10N 117-19-22W
- 32-40-04N 117-19-34W
- 32-39-37N 117-19-32W
- 32-39-56N 117-19-39W
- 32-40-10N 117-16-55W

The M/V OCEANUS and M/V MONITOR III when in the area will monitor VHF-FM Chan. 16. Mariners are requested to transit the area with caution. For more details or comments contact Adriano Feit at 619-758-2377 or 858-882-7055.

Charts: 18765 18772

LNM: 43/21

**SOUTHERN CALIFORNIA - SANTA CRUZ - WAVERIDER BUOY**

A Waverider buoy has been deployed at 36-56-04N 122-02-02W near Santa Cruz, CA. The buoy will be used for wave measurements to aid the Coastal Data Information Program. For questions, contact Ross Timmerman at 619-818-8387.

Chart 18685

LNM: 33/22

**SOUTHERN CALIFORNIA COAST-POINT CONCEPTION-NOAA BUOY DEPLOYMENT**

NOAA's Pacific Marine Environmental Laboratory deployed 11 temporary research lighted buoys on 17 February, 2023 approximately 1.3 NM east of the northern entrance to Agate Pass, in approximate positions

- 36-10.86N, 125-06.78W
- 35-55-02N, 125-02.64W
- 35-39.18N, 124-58.56W
- 35-23.34N, 124-54.54W
- 36-05.58N, 125-05.40W
- 36-00.30N, 125-04.02W
- 35-49.74N, 125-01.32W
- 35-44.46 N, 124-59.94W
- 35-33.90N, 124-57.24W
- 35-28.62N, 124-55.86W
- 35-18.06N, 124-53.16W

### **SOUTHERN CALIFORNIA COAST-POINT CONCEPTION-NOAA BUOY DEPLOYMENT**

The buoy is yellow and grey, 4 feet round and marked with a flashing yellow four seconds (FL Y 4s) light. Mariners are advised to use due caution when transiting this area. For more information, contact Cabot Zucker at (425) 477-9554 or email at cabot.zucker@noaa.gov.

Chart 18022

LNM: 08/23

### **SOUTHERN CALIFORNIA- ANAHEIM BAY- TEMPORARY BUOYS**

The U.S. Coast Guard has established temporary Buoys in Anaheim Bay at the following locations.

Temp Buoy #9- Fl G 4s

Position: 33-43-927N 118-05-981W

Temp Buoy #10 Q R

Position: 33-43-963N 118-05-818

Temp Buoy #11 Fl G 4s

Position: 33-44-077N 118-05-862W

Temp Buoy #13 Fl G 4s

Position: 33-44-211N 118-05-799W

For more details or comments contact LT Miranda Brumbaugh at 510-437-2978 or Miranda.E.Brumbaugh@uscg.mil.

Charts: 18746 18749

LNM: 29/22

### **SOUTHERN CALIFORNIA- SANTA BARBARA HARBOR- DREDGE OPERATIONS**

Pacific Dredge Company is conducting dredging operations in Santa Barbara Harbor at 34-24-55N 119-41-30W from 15 February, 2023 until 15 March, 2023. Cutterhead dredge SANDPIPER will be connected to a 3000ft long floating pipeline, and a high voltage power cable connects the dredge to shore. Dredge SANDPIPER and anchor boat KATHLEEN will monitor VHF-FM Chan. 6 and 16. Mariners are requested to transit the area with caution. For more details or comments contact Gary Foster at 805-331-2995

Chart 18725

LNM: 07/23

### **SOUTHERN CALIFORNIA-ALAMITOS BAY-BRIDGE**

APPIAN WAY-The west side green center channel light is extinguished. For further information contact the Coast Guard Bridge Office at 510-437-3514.

Chart 18749

LNM: 06/23

### **SOUTHERN CALIFORNIA-CARLSBAD-MARINE CONSTRUCTION**

Kiewit-Shea will be conducting marine construction in the Agua Hedionda Outer Lagoon at 33-08-19N 117-20-17W from 05 January, 2023 until 01 April, 2023. Operations will be conducted on the intake structure of the Claude "Bud" Lewis Carlsbad Desalination Plant. The Excavator CAT 345, a 18ft skiff, along with a 24ft push boat will be conducting operations. Mariners are requested to transit the area with caution. For more details or comments contact Jimmy Huynh at 562-321-3027.

Chart 18774

LNM: 52/22

### **SOUTHERN CALIFORNIA-CATALINA ISLAND-BUOY DEPLOYMENT**

Marine BioEnergy INC. will deploy a yellow research buoy on 29 November, 2022 near Catalina Island, CA with the characteristics of Fl Y 4s at 33-28-21N 118-29-33W. The buoy will be deployed until 29 May, 2023. Mariners are requested to transit the area with caution. For more details or comments contact Cindy Wilcox at 818-952-6018.

Chart 18740

LNM: 47/22

### **SOUTHERN CALIFORNIA-CHANNEL ISLANDS HARBOR-BRIDGES**

CHANNEL ISLANDS BLVD EAST (MANDALAY BAY) & CHANNEL ISLANDS BLVD WEST (EDISON CANAL) BRIDGES-Rehabilitation of the bridges will take place 7 am to 3:30 pm, Monday through Friday, 15 February, 2023 through 15 August, 2023. No in-water work will be conducted at the east bridge. At the west bridge two 5' X 20' X 10' flexi-floats will be employed and will be secured with two 35' spuds. The flexi-floats will reduce horizontal clearance in the channel by no more than 10 feet. 8' X 11'cofferdams will encase the bridge columns at each bent. Only one channel of the west bridge will be impacted at any one time. The ends of the cofferdams and each corner of each flexi-floats will be lighted at night with steady burning red lights (See Channel\_Islands\_Bridge\_Rehab.pdf at the end of this article.) For the safety of navigation, the flexi-floats can be moved with a 30-minute advance notice to the contractor. Mariners are requested to approach the west bridge with caution and avoid the span of the bridge where work is being conducted. For further information contact the Coast Guard Bridge Office at 510-437-3516.

Chart 18725

LNM: 06/23

### **SOUTHERN CALIFORNIA-IMPERIAL BEACH-MARINE CONSTRUCTION**

The Port of San Diego will commence Imperial Beach Pier Enhancements at 32-34-46N 117-07-54W from 15 January, 2023 until 15 June, 2023. Mariners are requested to transit the area with caution. For more details or comments contact the Port of San Diego at 619-540-0230.

Chart 18765

LNM: 03/23

### **SOUTHERN CALIFORNIA-LONG BEACH HARBOR-MARINE CONSTRUCTION**

Rincon Consultants Inc. will be conducting marine construction within the Long Beach Harbor at Junipero Beach at 33-45-42N 118-09-51W from 28 November, 2022 until 31 May 2023. A small craft will be on scene constructing a cofferdam during daylight hours. The vessel will be monitoring VHF-FM Chan. 16. Mariners are requested to transit the area with caution. For more details or comments contact Eric Schaad at 559-514-1837.

Chart 18751

LNM: 46/22

### **SOUTHERN CALIFORNIA-LONG BEACH HARBOR-MARINE CONSTRUCTION**

Dutra Construction Company is conducting marine construction in the Port of Long Beach, CA at the Carnival Cruise Lines Wharf H, 7 days a week until August, 2023. Construction crews will work pier side and will be monitoring VHF-FM Chan. 13, 16, and 72. Mariners are requested to transit the area with caution. For more details or comments contact Andrew Hunt at 415-837-6640.

Charts: 18746 18749 18751

LNM: 08/23

### **SOUTHERN CALIFORNIA-LOS ANGELES HARBOR-DREDGE OPERATIONS**

Manson Construction Co. is conducting dredge operations of the Port of Los Angeles berths 174 and 176 at 33-45-28N 118-15-44W until 5 March,

**SOUTHERN CALIFORNIA-LOS ANGELES HARBOR-DREDGE OPERATIONS**

2023. Operations will be conducted from 6:00am until 6:00pm. DB Vulcan, will be assisted by TB Elmer M. All vessels will be monitoring VHF-FM Chan. 16 and 67. Dredged materials will be disposed of within disposal site Berths 243-245. Mariners are requested to transit the area with caution. For more details or comments contact Sergio Covarrubias at 562-983-2397.

Chart 18751

LNM: 08/23

**SOUTHERN CALIFORNIA-LOS ANGELES/LONG BEACH HARBOR-BRIDGE**

VINCENT THOMAS BRIDGE-A 180 ft temporary platform, used to paint the underside of the bridge, continues to move west from the east tower. The platform reduces vertical clearance of the bridge by 5.5 ft. It is anticipated the temporary platform will arrive at the east edge of the shipping channel in summer of 2024. The upstream and downstream corners and every 50' along the upstream and downstream side of the platform is lighted at night with steady burning red lights (see V\_Thomas\_Platform\_Lighting1.pdf at the end of this notice). Work will take place during daylight hours, Monday through Friday. For conditions at the bridge mariners can contact 213-479-4138, 213-479-1144 or 310-261-9552. For more details or comments contact the Coast Guard Bridge Office at 510-437-3516.

Chart 18749

LNM: 30/22

**SOUTHERN CALIFORNIA-LOS ANGELES/LONG BEACH HARBOR-BRIDGE**

PIER 400 BRIDGE MODIFICATION- Construction is taking place Monday through Friday, 6am to 4pm, until 31 September, 2023. All in-water equipment and temporary structures will occur within the two existing bridges, and will not impact marine traffic in the area. For conditions at the work site, contact 714-536-9553 or 510-846-0325. For further information contact the Coast Guard Bridge Office at 510-437-3461.

Chart 18749

LNM: 26/22

**SOUTHERN CALIFORNIA-MORRO BAY BREAKWATER LIGHT-SOUND SIGNAL CHANGE**

Morro Bay Breakwater Light (LLNR 240) sound signal has been replaced with a Mariner Radio Activated Sound Signal (MRASS). The sound signal can be activated by keying the microphone 6 times within 10 seconds on VHF-FM Chan. 83A and will sound 1 blast every 30 seconds for 15 minutes.

Charts: 18700 18703

LNM: 42/22

**SOUTHERN CALIFORNIA-MORRO BAY-MARINE CONSTRUCTION**

Associated Pacific Constructors, Inc will conduct marine construction to the inner harbor of Morro Bay at 35-22-10N 120-51-21W from 13 February, 2023 until 27 February, 2023. A Meri Barge will be conducting pile drive operations during daylight hours, and monitoring VHF-FM Chan. 16. Mariners are requested to transit the area with caution. For more details or comments contact Associated Pacific Constructors, INC. at 805-772-7472.

Chart 18703

LNM: 05/23

**SOUTHERN CALIFORNIA-NAVAL BASE POINT LOMA-DREDGE OPERATIONS**

R.E. Staite Engineering Inc. will be conducting dredging at Naval Base Point Loma, centered at 32-41-16N 117-14-17W, until 31 March, 2023. Vessels DB POINT LOMA, DB WILLIAM F and DB PALOMAR will be performing dredging operations with scows HAROLD M, CLARENCE D, ROB P and MIKE J, along with push boat JEANIE R, crew boat JOHN DRAKE and RES survey boat in conjunction with tugs KILLEEN and CUYAMACA. All equipment will be monitoring VHF-FM Chan. 16. Mariners are reminded to observe all established Security Zones, and are urged to transit at their slowest safe speed to minimize wake and proceed with caution after passing arrangements have been made. For more details or comments contact project manager Erick Myers at 619-233-0178 or Christopher Ramos at 619-221-7236.

Chart 18773

LNM: 40/22

**SOUTHERN CALIFORNIA-NAVAL BASE POINT LOMA-MARINE CONSTRUCTION-DREDGE OPERATIONS**

R.E. Staite Engineering Inc. will conduct marine construction and dredging operations at Naval Base Point Loma behind the 151 Fuel Pier at 32-41-59N 117-14-13W from 01 October, 2022 until 31 March, 2023. Vessels DB PALOMAR, DB POINT LOMA, DB WILLIAM F, push boat JENIE R, crew boat JOHN DRAKE along with tugs KILLEEN, CUYAMACA and 04 scows will conduct operations. All vessels will monitor VHF-FM Chan. 16. All dredged materials will be disposed of at LA-5. Mariners are requested to transit the area with caution. For more details or comments contact Erick Myers at 619-233-0178.

Chart 18773

LNM: 41/22

**SOUTHERN CALIFORNIA-OFFSHORE CATALINA ISLAND-OCEANOGRAPHIC OPERATIONS**

The Scripps Institution of Oceanography research vessel SALLY RIDE (Call Sign WSAF) will conduct 24-hour oceanographic surface to seafloor operations from 21 February, 2023 until 27 February, 2023. Operations will be conducted in the vicinity of the following positions:

33-00-00N 118-24-00W

32-54-00N 118-06-00W

32-12-00N 118-45-00W

31-30-00N 119-12-00W

Exact timing, position, and duration of each station is dependent on operational needs and weather conditions. During over-the-side operations, vessel will be restricted in ability to maneuver. R/V SALLY RIDE will monitor VHF-FM Chan. 13 and 16. Mariners are requested to transit the area with caution. For more details or comments contact Wes Hill at 858-534-5568.

Charts: 18740 18774

LNM: 05/23

**SOUTHERN CALIFORNIA-OXNARD-ROCK REVETMENT REPAIR**

Larison Contracting will be conducting repair and replacement of rock revetment in Oxnard CA at 34-10-03 N 119-13-31 W until 12 June, 2023. Operation will be monitoring VHF-FM Chan. 16. Mariners are requested to transit at a safe speed to minimize wake and proceed with caution after making passing arrangements. For more information, contact Michael Tripp at 562-427-1900.

Chart 18725

LNM: 45/22

**SOUTHERN CALIFORNIA-POINT CONCEPTION-NOAA BUOY DEPLOYMENT**

NOAA's Pacific Marine Environmental Laboratory deployed a buoy 11 nautical miles due west of Point Conception, CA. at 34-27-31N 120-41-10W. The buoy named Harvest 22 has a yellow top with gray sides and a flashing amber light every 4 seconds. Mariners are advised to use due caution when transiting this area. For more details or comments contact Cabot Zucker at 425-477-9554.

LNM: 13/22

**SOUTHERN CALIFORNIA-PORT OF LONG BEACH-MARINE CONSTRUCTION**

Dutra Construction Company will be conducting marine construction and dredging operations of Wharf H at the Port of Long Beach from 01 November, 2022 until 01 June, 2023. Barge WILLIAM F will be monitoring VHF-FM Chan. 16 and 82. Mariners are requested to transit the area with caution. For more details or comments contact Andrew Hunt at 415-847-6640.

Charts: 18749 18751

LNM: 41/22

**SOUTHERN CALIFORNIA-PORT OF LONG BEACH-MARINE CONSTRUCTION**

Connolly-Pacific will conduct marine construction to the ramp at Pier G in the Port of Long Beach from 8:30am to 6:30pm until 28 February, 2023. DB LOS ANGELES and tug DURANGO will be conducting construction. DB LOS ANGELES will use anchor buoys to be positioned near the ramp. All vessels will be monitoring VHF-FM Chan 13, 16 and 80A. Mariners are requested to transit the area with caution. For more details or comments contact Justin Chin Wong at 562-437-2831.

Chart 18751

LNM: 28/22

**SOUTHERN CALIFORNIA-SAN DIEGO BAY-BRIDGE**

CORONADO BAY BRIDGE MAINTENANCE-Scaffolding installed between piers 11-12, 12-13, and 13-14, reduces vertical clearance by more than 8'. The upstream and downstream lower edges of the scaffolding are lighted at night with red lights. For more details or comments contact the Coast Guard Bridge Office at 510-437-3461.

Charts: 18772 18773

LNM: 13/20

**SOUTHERN CALIFORNIA-SAN DIEGO BAY-DIVE OPERATIONS**

Merkel & Associates will be conducting dive operations in San Diego, CA between the Coronado ferry landing and the Embarcadero from 25 February, 2023 until 28 February, 2023. The survey will be conducted on two pipelines which will be located between the following coordinates:

Pipeline number 1:

32-42-02N 117-10-26W and 32-42-30N 117-10-17W

Pipeline number 2:

32-41-57N 117-10-10W and 32-42-22N 117-10-07W

The Survey vessel OK1 (call sign CF3862UC) and a support vessel (call sign CF9883pv) will be monitoring VHF-FM Chan. 16. Mariners are requested to transit the area with caution. For more details or comments contact Keith Merkel at 858-560-5465.

Chart 18773

LNM: 08/23

**SOUTHERN CALIFORNIA-SAN DIEGO BAY-MARINE CONSTRUCTION**

R.E. Staite Engineering Inc. will conduct marine construction at Naval Base Point Loma piers 5000 at 32-41-16N 117-14-17W from 16 September, 2022 until 31 March, 2023. Vessels DB PALOMAR, DB POINT LOMA, DB WILLIAM F, push boat JEANIE R, crew boat JOHN DRAKE along with tugs KILLEEN, CUYAMACA and 04 scows will conduct operations. All vessels will monitor VHF-FM Chan. 16. Mariners are requested to transit the area with caution. For more details or comments contact Erick Myers at 619-233-0178 or Christopher Ramos at 619-221-7236.

Chart 18773

LNM: 41/22

**SOUTHERN CALIFORNIA-SAN DIEGO BAY-MARINE CONSTRUCTION**

R.E. Staite Engineering Inc. will conduct marine construction at Naval Base Point Loma at 32-41-33N 117-14-22W from 16 September, 2022 until 31 March, 2023. Vessels DB PALOMAR, DB POINT LOMA, RES 180, crew boat JOHN DRAKE, along with tug CUYAMACA will conduct operations. All vessels will be monitoring VHF-FM Chan. 16. Mariners are requested to transit the area with caution. For more details or comments contact Erick Myers at 619-233-0178.

Chart 18773

LNM: 32/22

**SOUTHERN CALIFORNIA-SAN DIEGO BAY-MARINE EVENT**

The Cortez Racing Association (CRA) will sponsor the CRA Midwinter Regatta on 26 February, 2023 from 10:00am until 5:00pm. The regatta will consist of 40 sailboats starting near Harbor Island, proceeding to North San Diego Bay and finishing back at Harbor Island. Mariners are requested to transit the area with caution. For more details or comments contact Dale Greaney at 760-470-1730.

Chart 18773

LNM: 06/23

**SOUTHERN CALIFORNIA-SAN DIEGO BAY-MARINE EVENT**

The Cortez Racing Association (CRA) will sponsor the CRA March Madness Regatta on 11 March, 2023 from 10am until 5pm. The regatta will consist of 40 sailboats starting near Harbor Island, proceeding to San Diego Bay Channel Lighted Buoy 16 (LLNR 1620), continuing to San Diego Bay Channel Lighted Buoy 28 (LLNR 1980), and finishing back at Harbor Island. Mariners are requested to transit the area with caution. For more details or comments, contact Dale Greaney at 760-470-1730.

Chart 18773

LNM: 06/23

**SOUTHERN CALIFORNIA-SAN DIEGO RIVER-BRIDGE**

WEST MISSION BAY DRIVE BRIDGE-The City of San Diego is replacing the existing bridge. A temporary work trestle, providing a vertical clearance of 8' over Mean Sea Level is in place. Scheduled completion date of the bridge replacement project is March 2023. Mariners are urged to use caution while navigating the replacement bridge work site. For more details or comments contact the Coast Guard Bridge Office at 510-437-3461.

Chart 18765

LNM: 44/22

**SOUTHERN CALIFORNIA-SAN DIEGO-DEL MAR-SCIENTIFIC RESEARCH**

The Scripps Institution of Oceanography (SIO) will be conducting nearshore scientific research from 19 January, 2023 until 28 February, 2023 in the vicinity of Los Peñasquitos Lagoon/Torrey Pines State Beach at the border of the Cities of San Diego and Del Mar. The purpose of this research is to study the impact of breaking surf zone waves on freshwater outflow plumes. SIO will conduct 3 releases of a bright pink environmentally safe dye (a proxy for tracers such as pollutants, sediment, larvae, nutrients, etc.) into the Los Peñasquitos Lagoon mouth during an ebb tide to quantify the dispersion of outflowing fresher plume water as it interacts with the surfzone. The dye will be tracked as it spreads using beach instrumentation, drones, and jetskis. SIO has installed instruments on the seafloor that are marked by 12 to 14 inch orange buoys. Mariners are requested to transit the area with caution. For more details or comments contact Sarah Giddings at 858-534-5103 or sarahgid@ucsd.edu.



**SOUTHERN CALIFORNIA-SAN DIEGO-DEL MAR-SCIENTIFIC RESEARCH**

Charts: 18740 18746 18758

LNM: 03/23

**SOUTHERN CALIFORNIA-SAN DIEGO-MARINE EVENT**

The San Diego Yacht Club will be sponsoring the One Design Weekend Monthly Series on various dates throughout CY2023. The event is scheduled for 21-22 January, 11-12 February, 29-30 April, 13 May, 10-11 June, 8-9 July, 12-13 August, 23-24 September, 14-15 October, 11-12 November, and 9 December, 2023. The events will involve approximately 30 sailing vessels racing on a course in Coronado Roads, CA. The course will be centered at approximately 32-39-30N 117-11-40W and will extend southwest up to 1.2 nm. Mariners are requested to transit the area with caution. For more details or comments contact Jeff Johnson at 619-933-9922.

Chart 18773

LNM: 03/23

**SOUTHERN CALIFORNIA-SAN DIEGO-MARINE EVENT**

The San Diego Yacht Club will be sponsoring the Etchells West Coast Series sailing event on 11 March, 2023 until 12 March 2023, 31 March, 2023 until 2 April, 2023 and 19 May until 21 March, 2023, from 11:00am to 5:00pm each day. The event will involve 35 sailing vessels racing on a course in Coronado Roads, starting at approximately 32-38-00N 117-10-42W and extending 1.2 nm windward in the prevailing wind direction. Mariners are requested to transit the area with caution. For more details or comments contact Jeff Johnson at 619-933-9922.

Chart 18773

LNM: 06/23

**SOUTHERN CALIFORNIA-SAN DIEGO-SAN PEDRO-MARINE EVENT**

The San Diego Yacht Club and Newport Harbor Yacht Club will be sponsoring the Islands Race marine event from 24 February, 2023 until 25 February, 2023. The event will involve approximately 30 sailing vessels racing on a course starting near Point Fermin, Long Beach, CA at 11:00am on 24 February, 2023, proceeding offshore rounding Catalina Island and San Clemente Island, and finishing by 10:00pm on 25 February, 2023 at the entrance to San Diego Bay. Mariners are requested to transit the area with caution. For more details or comments contact Mr. Jeff Johnson at 619-933-9922.

Charts: 18765 18773

LNM: 03/23

**SOUTHERN CALIFORNIA-SAN NICHOLAS ISLAND-ATMOSPHERIC BUOY DEPLOYMENT**

Naval Air Systems Command has deployed an atmospheric sampling buoy 1.5 miles Northeast of San Nicolas Island at 33-18-00N 119-30-55W. The yellow buoy Fl Y 3s, is 6 feet above the waterline and 2 feet in diameter. Mariners are requested to transit the area with caution. For more details or comments contact Kyle Edwards at 805-989-0672.

Chart 18720

LNM: 39/22

**SOUTHERN CALIFORNIA-SANTA BARBARA-AQUACULTURE ESTABLISHMENT**

Ocean Rainforest will be establishing an Aquafarm, starting on 27 February, 2023, located located 4.3 NM South of Santa Barbara. The site is bound within four yellow boundary marker buoys with a flashing yellow light every 2 seconds (Fl Y2s) in the following positions:

34-19-58.53N 119-42-45.72W

34-20-10.12N 119-42-45.72W

34-20-11.23N 119-42-07.24W

34-19-59.64N 119-42-07.92W

In line with the outer boundary buoys are small unlit floats that are marking the anchors associated with the Aquaculture area, the total buoys marking the anchors are 12 on the long axis of each side and 2 between the corner buoys on the short axis. Within the boundary markers will be 188 buoys/floats, see Enclosure AQUACULTURE ESTABLISHMENT.pdf enclosure below. The interior buoys of the aquaculture are in the shape of a rectangle with the outer edge marked with yellow buoys, every other buoy has a flashing yellow light flashing every 2 seconds (Fl Y2s). Within the rectangle are 135 small unlit floats marking the cultivation lines. Mariners are advised to remain clear of this area as entanglement with associated equipment may occur. Vessel DANNY C will be conducting the deployment and monitoring VHF-FM Chan. 7 and 16. For more details or comments contact Ocean Rainforest Inc at 805-722-9601 or eliza@oceanrainforest.com.

Charts: 18720 18725

LNM: 08/23

**SOUTHERN CALIFORNIA-TWO HARBORS-CATALINA ISLAND-BUOY DEPLOYMENT**

Marine BioEnergy INC. will be conducting biomass research from 17 November, 2022 until 15 May, 2023 at 33-28-12N 118-29-33W. The R/V SEA SCOUT will be deploying a yellow buoy with a light characteristic of Fl Y 4s to study the growth of kelp in the area. Mariners are requested to transit the area with caution. For more details or comments contact Cindy Wilcox at 818-952-6018.

Charts: 18746 18757

LNM: 46/22

**SOUTHERN CALIFORNIA-VANDENBERG AFB-HAZARDOUS OPERATIONS**

Hazardous operations will be conducted from Vandenberg AFB, CA starting at 9:46am on 27 February, 2023 until 16:31pm on 4 March, 2023. Hazardous operation areas are bounded by the following coordinates:

34-40-00N 120-43-00W

34-40-00N 120-17-00W

34-27-00N 120-17-00W

34-08-00N 120-05-00W

32-40-00N 119-25-00W

32-39-00N 119-37-00W

33-16-00N 119-58-00W

33-53-00N 120-23-00W

34-21-00N 120-36-00W

34-32-00N 120-40-00W (CLOSING THE FIRST POINT)

Mariners are advised to remain clear of these areas for the duration of operations. For more details or comments contact Vandenberg AFB at 805-606-8825 or on VHF-FM Chan. 06 or 16.

Charts: 18700 18720 18740

LNM: 08/23

**SOUTHERN CALIFORNIA-VANDENBERG AFB-HAZARDOUS OPERATIONS**

Hazardous operations will be conducted from Vandenberg AFB, CA starting at 9:46am on 27 February, 2023 until 16:31pm on 4 March, 2023. Hazardous operation areas are bounded by the following coordinates:

**SOUTHERN CALIFORNIA-VANDENBERG AFB-HAZARDOUS OPERATIONS**

34-40-00N 120-43-00W  
34-40-00N 120-17-00W  
34-27-00N 120-17-00W  
34-08-00N 120-05-00W  
32-40-00N 119-25-00W  
32-39-00N 119-37-00W  
33-16-00N 119-58-00W  
33-53-00N 120-23-00W  
34-21-00N 120-36-00W  
34-32-00N 120-40-00W (CLOSING THE FIRST POINT)

Mariners are advised to remain clear of these areas for the duration of operations. For more details or comments contact Vandenberg AFB at 805-606-8825 or on VHF-FM Chan. 06 or 16.

Charts: 18700 18720 18740

LNM: 08/23

**SOUTHERN CALIFORNIA-VENTURA HARBOR-DREDGE OPERATIONS**

Manson Construction Co. is conducting hydraulic maintenance dredging of the Ventura Harbor Main Channel, entrance and sand trap at 34-14-51N 119-16-07W 24 hours a day from 01 March, 23 until 15 April, 2023. Dredge HR MORRIS, DB FREYA, dredge tender PUP, dredge tender CUB, and survey boat RUSTLER will monitor VHF-FM Chan. 16 and 67. Material will be transported through floating pipeline, submerged pipeline, and shore pipeline to the disposal area south of surfer's knoll. Mariners are requested to transit the area with caution. For more details or comments contact Project Manager Max Oviedo at 206-619-7729.

Chart 18725

LNM: 08/23

**SOUTHERN CALIFORNIA-WILMINGTON WATERFRONT-MARINE CONSTRUCTION**

Jilk Heavy Construction Co. will conduct marine construction at the Wilmington Waterfront in Wilmington, CA. Operations will be until 28 February, 2023 during daylight hours at 33-45-20N 118-16-04W. A crane barge along with several work skiffs will be in the area and monitoring VHF-FM Chan. 16. Mariners are requested to transit the area with caution. For more details or comments contact Joe Salgado at 310-505-0142.

Charts: 18749 18751

LNM: 02/22

---

---

**SECTION VIII - LIGHT LIST CORRECTIONS**

An Asterisk \*, indicates the column in which a correction has been made to new information

---

(1) No.	(2) Name and Location	(3) Position	(4) Characteristic	(5) Height	(6) Range	(7) Structure	(8) Remarks
<b>None</b>							

---

---

---

**PUBLICATION CORRECTIONS**

---

**ANNOUNCEMENT – U.S. Coast Pilot® 7 and U.S. Coast Pilot® -NEW EDITIONS-Spring 2022**

PUBLICATION–National Oceanic Atmospheric Administration (NOAA) – U.S. Coast Pilot 7, Pacific Coast: California, 54th Edition, 2022, has been issued and is ready for free download and weekly updates at [www.nauticalcharts.noaa.gov/publications/coast-pilot/index.html](http://www.nauticalcharts.noaa.gov/publications/coast-pilot/index.html). Only Print-on-Demand (POD) bound copies are available for purchase; visit [nauticalcharts.noaa.gov/publications/print-agents.html#coast-pilot](http://nauticalcharts.noaa.gov/publications/print-agents.html#coast-pilot). The 2022 Edition cancels the preceding 2021 Edition, and incorporates all previous corrections.

LNM: 21/22

**ANNOUNCEMENT – U.S. Coast Pilot® 7 and U.S. Coast Pilot® 10 - NEW EDITIONS – Spring 2020**

U.S Coast Pilot 7 will be divided into two editions in the spring 2020 due to its large size. The following are the projected new editions that will be issued on the same date and ready for free download and weekly updates on June 9, 2020, at [nauticalcharts.noaa.gov/publications/coast-pilot/index.html](http://nauticalcharts.noaa.gov/publications/coast-pilot/index.html).

PUBLICATION–National Oceanic Atmospheric Administration (NOAA) – U.S. Coast Pilot 7, Pacific Coast: California 52nd Edition, 2020

PUBLICATION–National Oceanic Atmospheric Administration (NOAA) – U.S. Coast Pilot 10, Pacific Coast: Oregon, Washington, Hawaii and Pacific Islands 1st Edition, 2020

Only Print-on-Demand bound copies are available for purchase; visit [nauticalcharts.noaa.gov/publications/print-agents.html#coast-pilot](http://nauticalcharts.noaa.gov/publications/print-agents.html#coast-pilot)

For any questions or comments; visit [nauticalcharts.noaa.gov/customer-service/assist/](http://nauticalcharts.noaa.gov/customer-service/assist/)

NOAA Office of Coast Survey's Nautical Publications Branch  
April 2020

LNM: 18/20

---

---

**ENCLOSURES**

---

**REPORT OF DELAY AT DRAWBRIDGE**

[Delay\\_Report\\_11-2017.pdf](#)

Use link above to Report a Delay at a Drawbridge.

LNLM: 06/07

**SOUTHERN CALIFORNIA-CHANNEL ISLANDS HARBOR-BRIDGES**

[Channel\\_Islands\\_Bridge\\_Rehab.pdf](#)

CHANNEL ISLANDS BLVD EAST (MANDALAY BAY) & CHANNEL ISLANDS BLVD WEST (EDISON CANAL) BRIDGES-Lighting diagram for cofferdams and flexi-floats.

LNLM: 06/23

**NORTHERN CALIFORNIA-DELTA & RIVERS-AMERICAN RIVER-BRIDGE**

[AmRiv\\_SiltCurtain\\_BargeLocation.pdf](#)

CAPITAL CITY HWY (ROUTE 51) BRIDGE-See link above for barge and silt curtain locations.

LNLM: 22/22

**NORTHERN CALIFORNIA-SAN FRANCISCO BAY-BRIDGE**

[PlatformLighting\\_GG\\_Bridge\\_14Jun22.pdf](#)

GOLDEN GATE BRIDGE-Temporary Platform Location and Lighting revised 14 June, 2022.

LNLM: 24/22

**NORTHERN CALIFORNIA-SAN FRANCISCO BAY-BRIDGE**

[R-SR\\_Bridge\\_Temp\\_Platform\\_Lighting.pdf](#)

RICHMOND-SAN RAFAEL BRIDGE- See link above for temporary underdeck platform lighting for concrete and steel repairs.

LNLM: 48/21

**NORTHERN CALIFORNIA-DELTA & RIVERS-SACRAMENTO RIVER-BRIDGE**

[ButteConstructionLighting-BuoyLine.pdf](#)

REPLACEMENT BUTTE CITY BRIDGE-See link above for temporary construction trestle and lighting and proposed buoy line..

LNLM: 36/22

**NORTHERN CALIFORNIA-DELTA & RIVERS-SAN JOAQUIN RIVER-BRIDGE**

[TemporaryBridge\\_FalseworkLighting.pdf](#)

CROWS LANDING REPLACEMENT-See link above for temporary falsework, temporary bridge, the temporary navigation channel during construction with navigation lighting plan.

LNLM: 36/22

**NEVADA-ARIZONA-COLORADO RIVER-BRIDGE**

[RockAccessPad\\_Lighting.pdf](#)

NEW LAUGHLIN-BULLHEAD CITY BRIDGE-See link above for temporary rock access pad, pier and silt curtain anchor lighting and configuration.

LNLM: 50/22

**NORTHERN CALIFORNIA-DELTA & RIVERS-OLD RIVER-BRIDGE**

[OldRiver\\_Barge\\_Lighting\\_Plan.pdf](#)

CA ROUTE 4 BRIDGE-See link above for typical barge lighting and location during rehabilitation project.

LNLM: 44/22

**NORTHERN CALIFORNIA-DELTA & RIVERS-MOKELUMNE RIVER-BRIDGE**

[MokeRiverBridge\\_RehabBargeLights.pdf](#)

MOKELUMNE RIVER BRIDGE (HWY 12)-See link above for typical barge and buoy lighting and location during rehabilitation project.

LNLM: 48/22

**NORTHERN CALIFORNIA-MONTEREY BAY-SURVEY OPERATIONS**

[MONTEREY BAY-SURVEY OPERATIONS.pdf](#)

see link above.

LNLM: 04/23

**NORTHERN CALIFORNIA-OFFSHORE CAPE MENDOCINO-SURVEY OPERATIONS**

[CAPE MENDOCINO-SURVEY OPERATIONS.pdf](#)

see link above.

LNLM: 04/23

**ARIZONA/CALIFORNIA-COLORADO RIVER-BRIDGE**

[I-8\\_Trestle\\_Lighting.pdf](#)

INTERSTATE 8 BRIDGE (YUMA, AZ)-See link above for temporary trestle lighting.

LNLM: 7/23

**SOUTHERN CALIFORNIA-SANTA BARBARA-AQUACULTURE ESTABLISHMENT**

[AQUACULTURE ESTABLISHMENT.png](#)

see link above.

LNLM: 03/23

**SOUTHERN CALIFORNIA-PORTS OF LOS ANGELES/LONG BEACH-LA/LB HARBOR-BRIDGE**

[V\\_Thomas\\_Platform\\_Lighting1.pdf](#)

See link above for platform lighting for Vincent Thomas Bridge.

LNLM: 28/19

---

THE LOCAL NOTICE TO MARINERS IS AVAILABLE ON THE WORLD WIDE WEB AT [HTTPS://WWW.NAVCEN.USCG.GOV](https://www.navcen.uscg.gov)

T. L. Conner  
U.S. Coast Guard  
Acting Chief Waterways Management Branch

**U.S. COAST GUARD  
REPORT OF DELAY AT DRAWBRIDGE  
PER 33 CFR 117.5**

BRIDGE NAME: \_\_\_\_\_ DATE: \_\_\_\_\_

MILE : \_\_\_\_\_ WATERWAY: \_\_\_\_\_

1. Name/ Type of Vessel: \_\_\_\_\_ Direction of Travel : \_\_\_\_\_

2. Vessel Owner (Name): \_\_\_\_\_

(Address): \_\_\_\_\_

3. Name of Pilot (if applicable): \_\_\_\_\_

(Address): \_\_\_\_\_

4. Time vessel signaled for bridge opening: \_\_\_\_\_

5. Location of vessel when signal was given: \_\_\_\_\_

6. Time and location of vessel when delay began: \_\_\_\_\_

7. Method of signal for bridge opening: ( ) Radio ( ) Sound ( ) Visual.

(If sound or visual signal was used, specify: \_\_\_\_\_)

8. Time bridge operator acknowledged signal: \_\_\_\_\_

9. Method of bridge operator acknowledgement: ( ) Radio ( ) Sound ( ) Visual

(If sound or visual signal was used, specify: \_\_\_\_\_)

10. Did bridge operator acknowledgement indicate the bridge,

( ) Could be opened immediately?

( ) Could not be opened immediately?

11. If land traffic crossed the bridge:

Time land traffic started across the bridge \_\_\_\_\_

Time land traffic stopped crossing the bridge \_\_\_\_\_

Did land traffic stop on the bridge? \_\_\_\_\_

Duration land traffic stopped on the bridge \_\_\_\_\_

12. Time drawbridge opened for navigation \_\_\_\_\_

13. Additional comments:

\_\_\_\_\_  
\_\_\_\_\_  
\_\_\_\_\_

I certify the above information is true to the best of my knowledge and understand this statement may be used by the U.S. Coast Guard in levying fines against the bridge owner.

Signature \_\_\_\_\_

Telephone \_\_\_\_\_

Mariners may complete and return to:

Commander (dpw)

Fax: (510) 437-5836

Email: [Carl.T.Hausner@uscg.mil](mailto:Carl.T.Hausner@uscg.mil)

Eleventh Coast Guard District

Coast Guard Island, Building 50-2

Alameda, CA 94501-5100

Attn: Bridge Office

Questions? Please contact: Carl Hausner, Bridge Administrator, Eleventh Coast Guard District

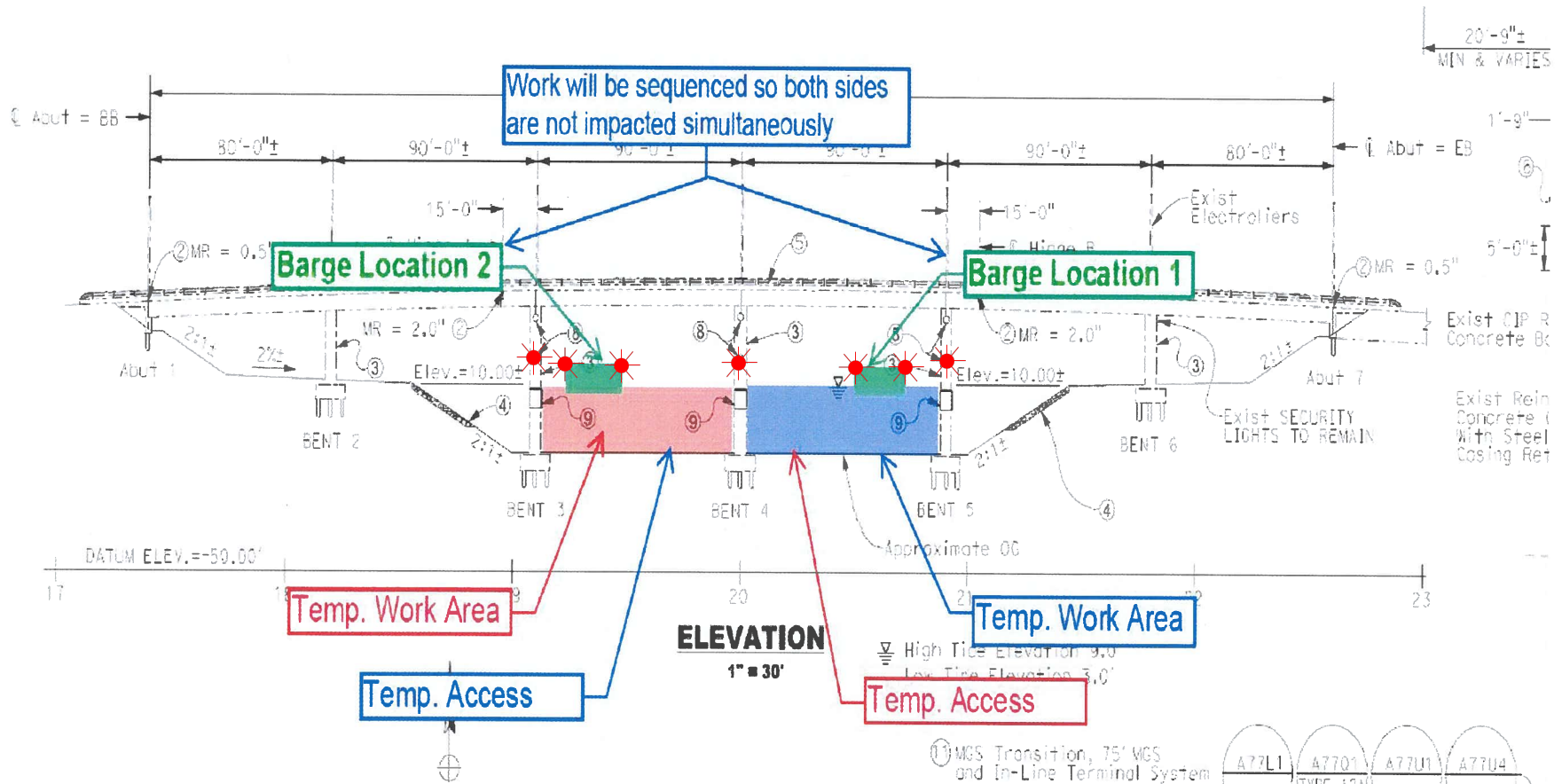
Office: (510) 437-3516

Cell: (510) 219-4366

Mariners are reminded not to require bridge openings for appurtenances nonessential to navigation, per 33 CFR 117.11

# Rehabilitation of the Channel Islands Blvd West Bridge (Edison Canal) over Channel Islands Harbor

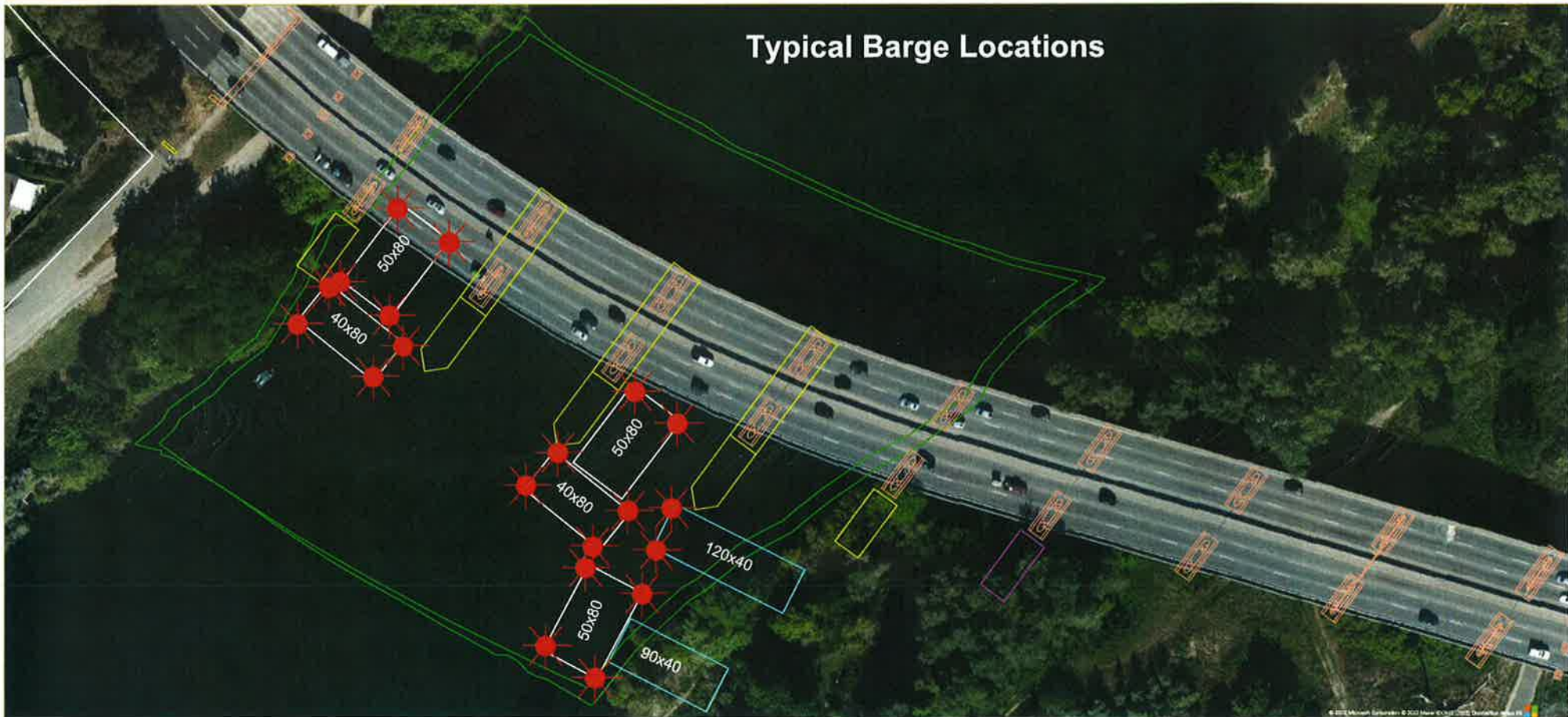
## Flexi-Float and Cofferdam Lighting



The upstream and downstream ends of the temporary cofferdams and each corner of each flexi-float barge shall be lighted at night with steady burning red lights visible at 2,000 yards by approaching vessels. Only one span will be worked on at any one time, leaving the other span available for mariners.

Rehabilitation and Modification Project  
Capital City (CA Route 51) Bridge, Mile 4.0, American River

Typical Barge Location and Typical Barge Lighting



Each corner of each barge is lighted at night with steady burning all-round red light, visible at 2,000 by approaching vessels. All vessels transiting the project area should use extreme caution. Turbidity curtains will be placed at different locations during the project. The next four diagrams show the proposed location of the curtains.



Capital City Bridge, Mile 4.0, American River

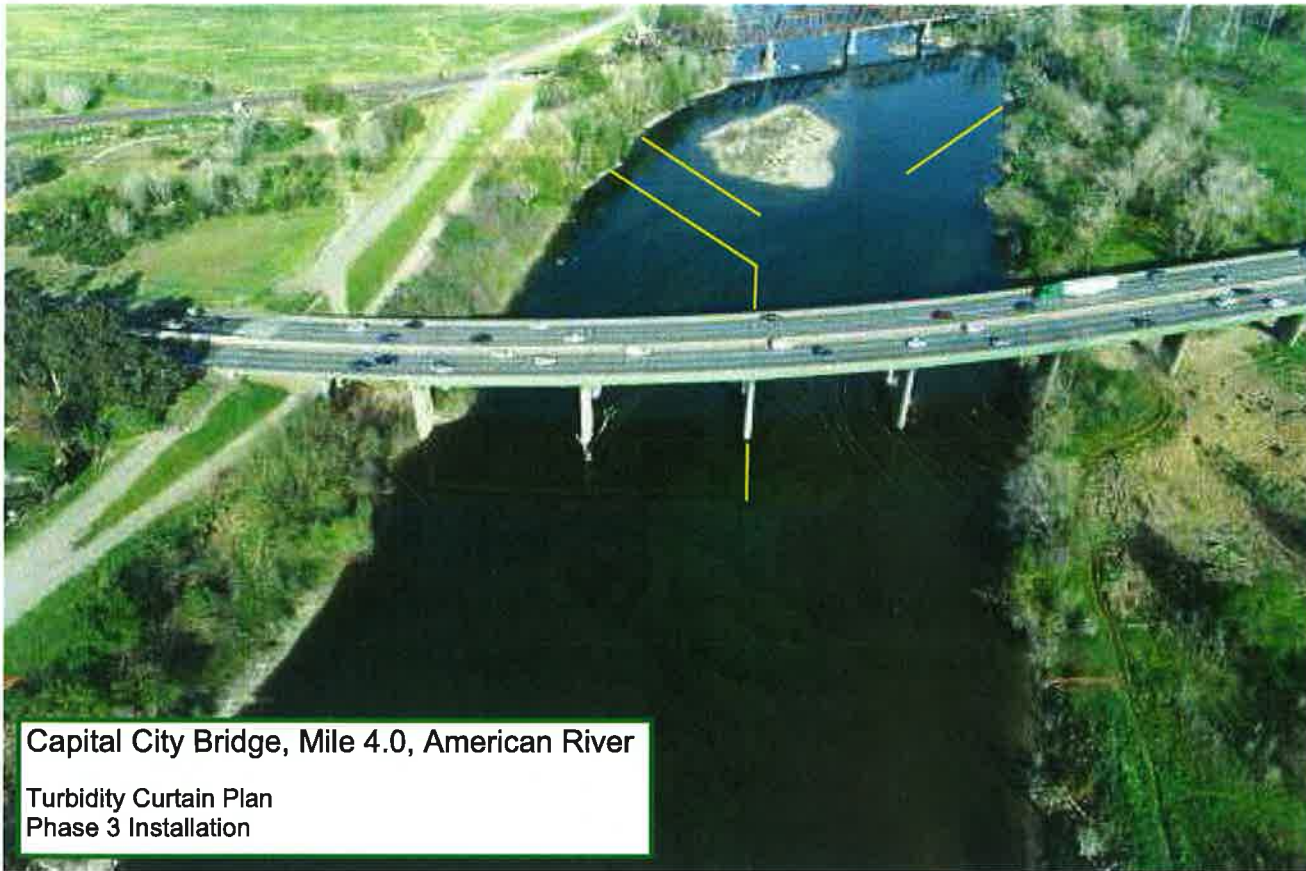
Turbidity Curtain Plan  
Phase 1 Installation





Capital City Bridge, Mile 4.0, American River

Turbidity Curtain Plan  
Phase 2 Installation



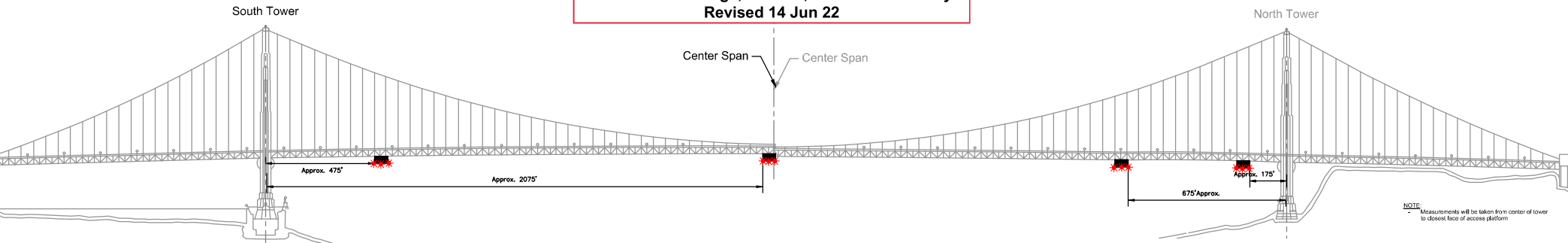
Capital City Bridge, Mile 4.0, American River

Turbidity Curtain Plan  
Phase 3 Installation



Capital City Bridge, Mile 4.0, American River  
Turbidity Curtain Plan  
Phase 4 Installation

**Temporary Access Platforms**  
**Golden Gate Bridge, mile 2.5, San Francisco Bay**  
**Revised 14 Jun 22**



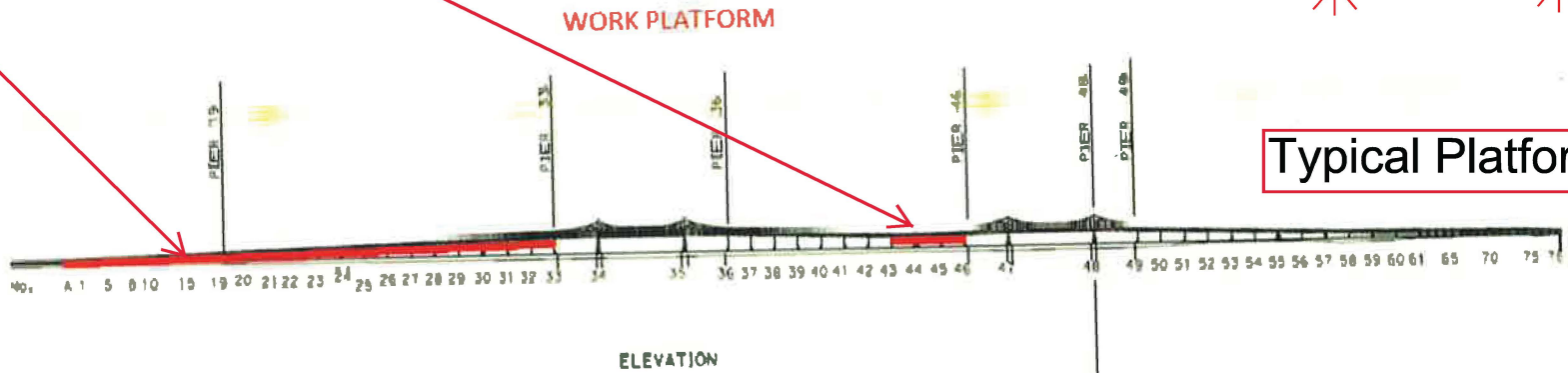
Typical Platform Lighting



Four 54 ft wide temporary platforms are installed in the main span below low steel of the bridge, in relation to centerline of the span; two south of the north tower and two north of the south tower, reducing vertical clearance by no more than 14 feet. The upstream and downstream lower edges of the temporary platforms will be lighted at night with steady burning red lights visible at 2,000 yards by approaching vessels.

Painting and Structural Repairs Project  
Richmond-San Rafael Bridge  
Mile 13.0, San Francisco Bay

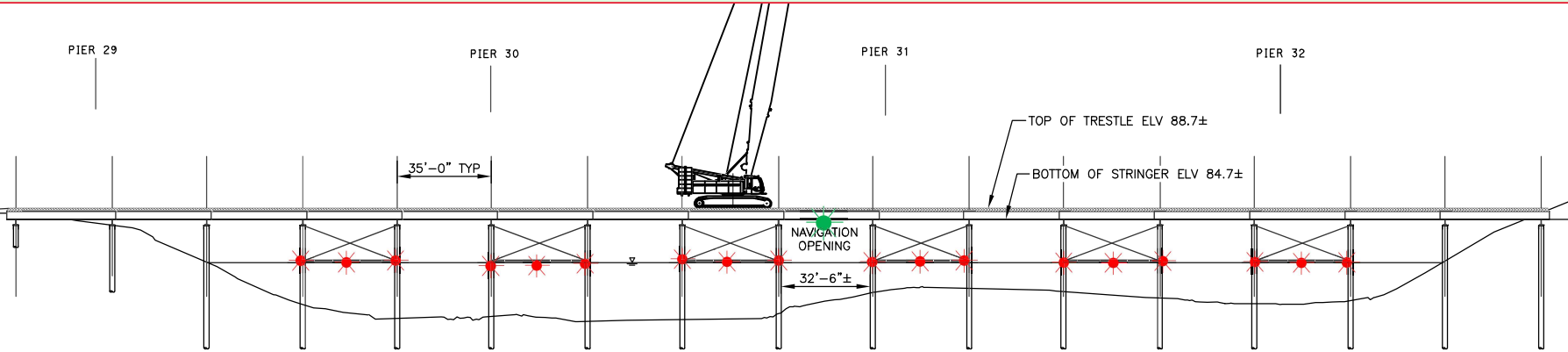
Temporary Underdeck Platforms




Typical Platform Lighting

The upstream and downstream lower edges of each temporary platform in each span are lighted at night with steady burning red lights to be seen at 2,000 yards by approaching vessels. Each platform reduces vertical clearance by no more than 3 feet.

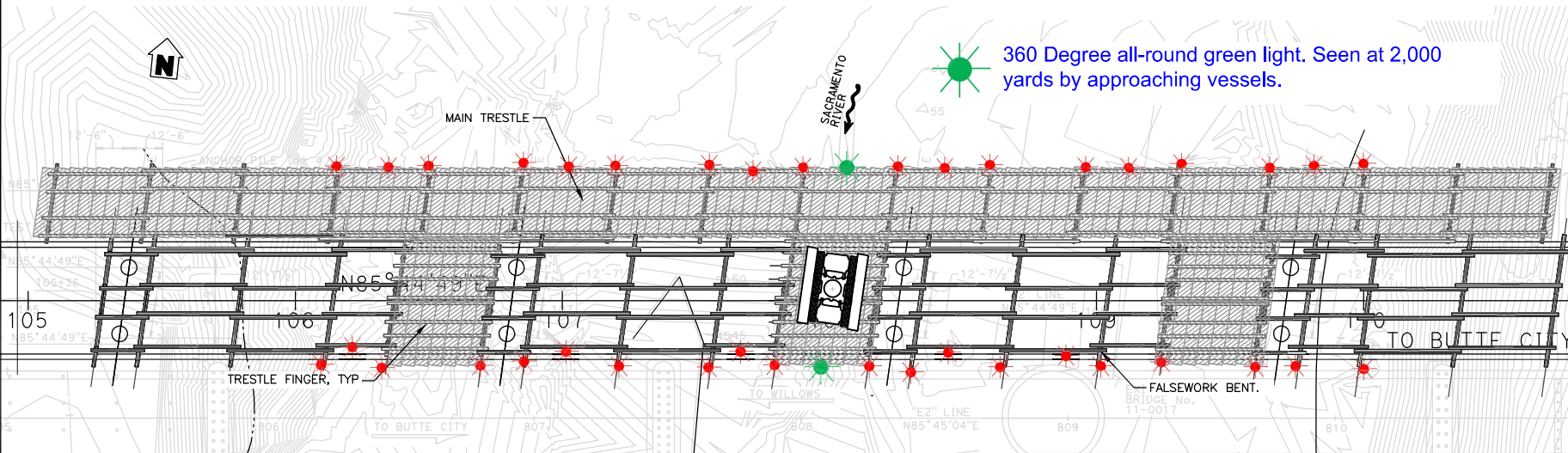
# Butte City Bridge Replacement Project Sacramento River



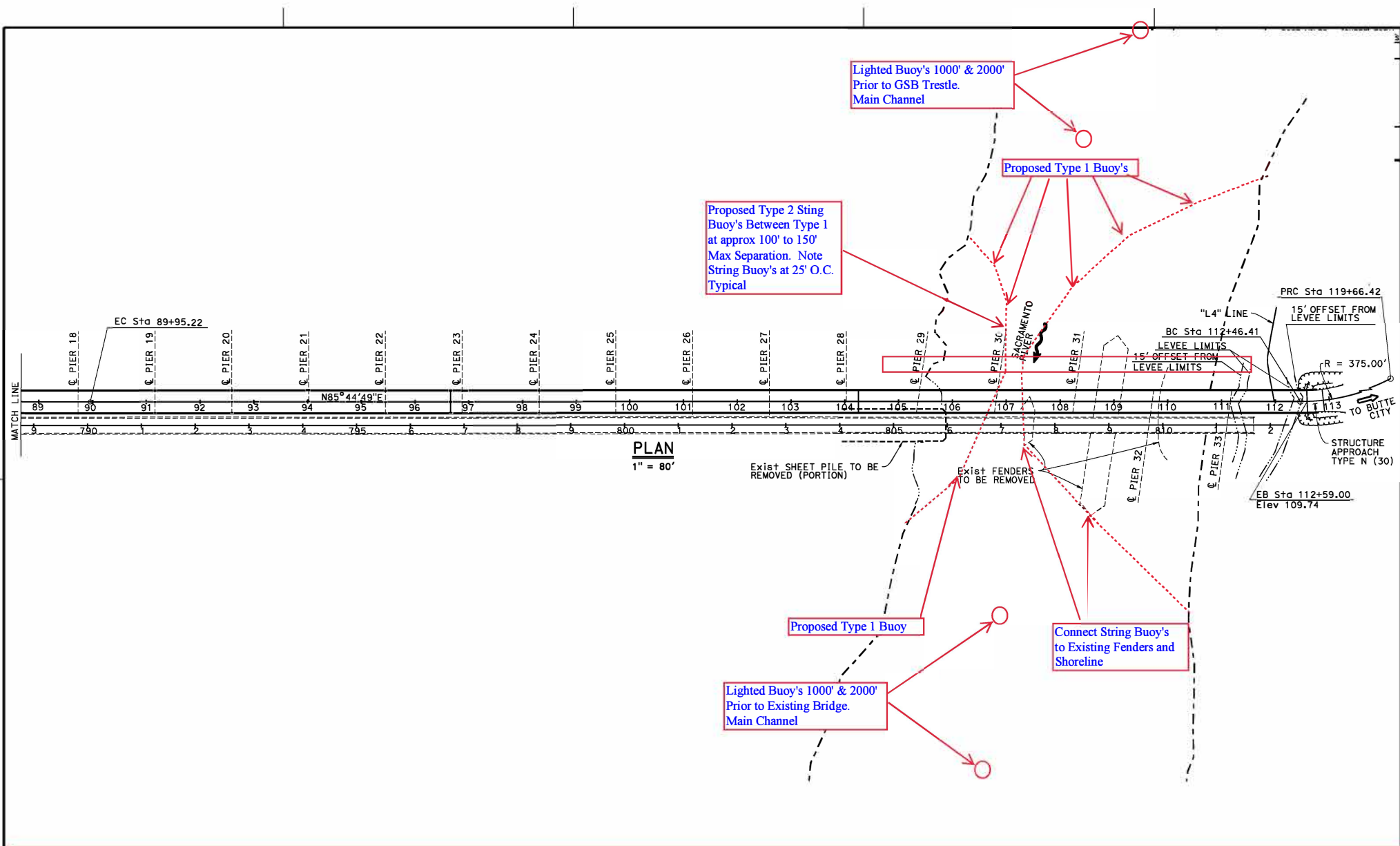
MAIN TRESTLE PROFILE  
SCALE: 1:40

 360 Degree all-round red light. Seen at 2,000 yards by approaching vessels.

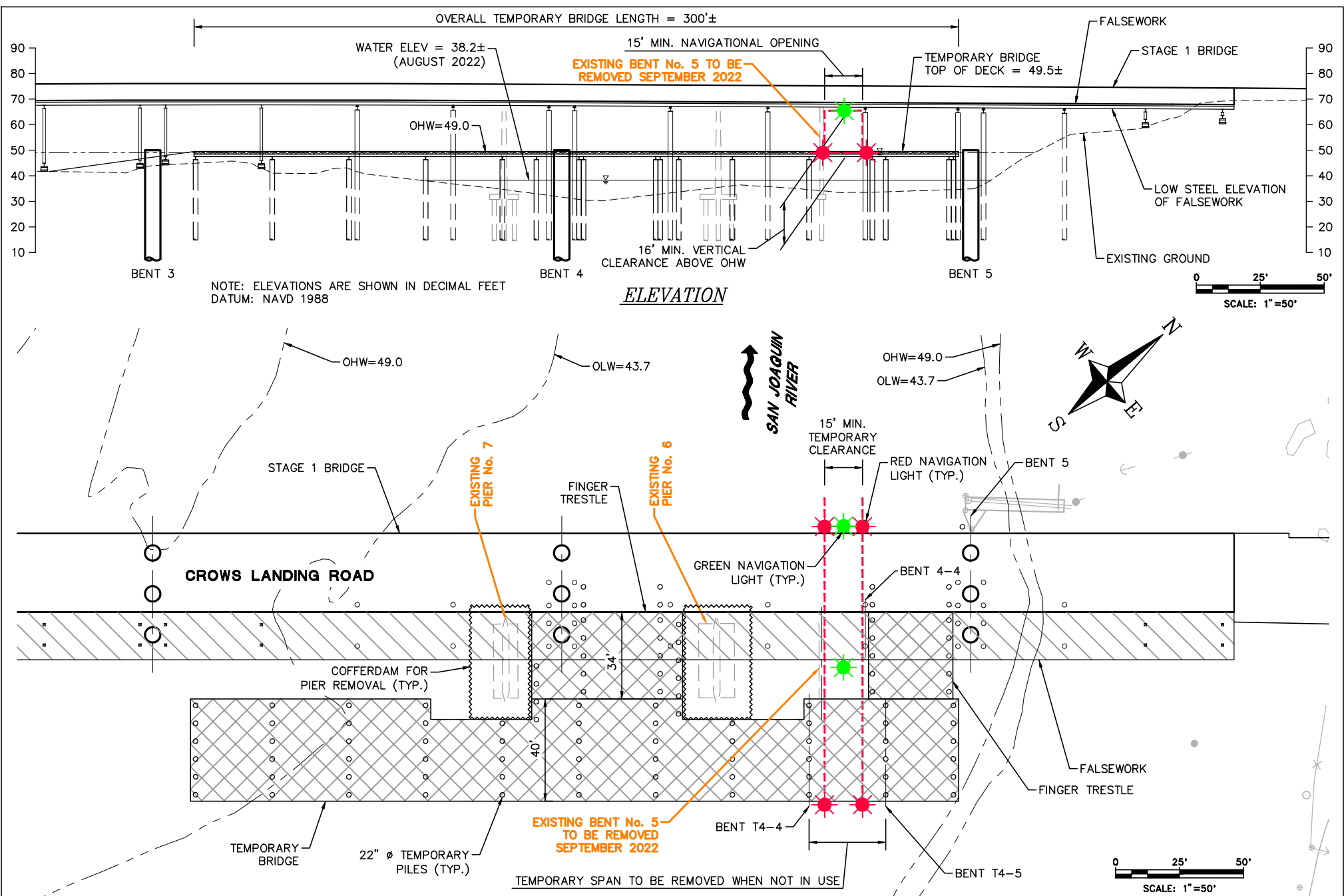
 360 Degree all-round green light. Seen at 2,000 yards by approaching vessels.



The upriver and downriver ends of the trestle piles and crossbeams are lighted at night with steady burning red lights. The upriver and downriver low steel of the temporary navigation span, in the center of the river, is lighted at night with steady burning green lights, which identifies the center of the temporary navigation span.



**Butte City Bridge Replacement Project, mile 169.7, Sacramento River  
Proposed Buoy Line During Construction**

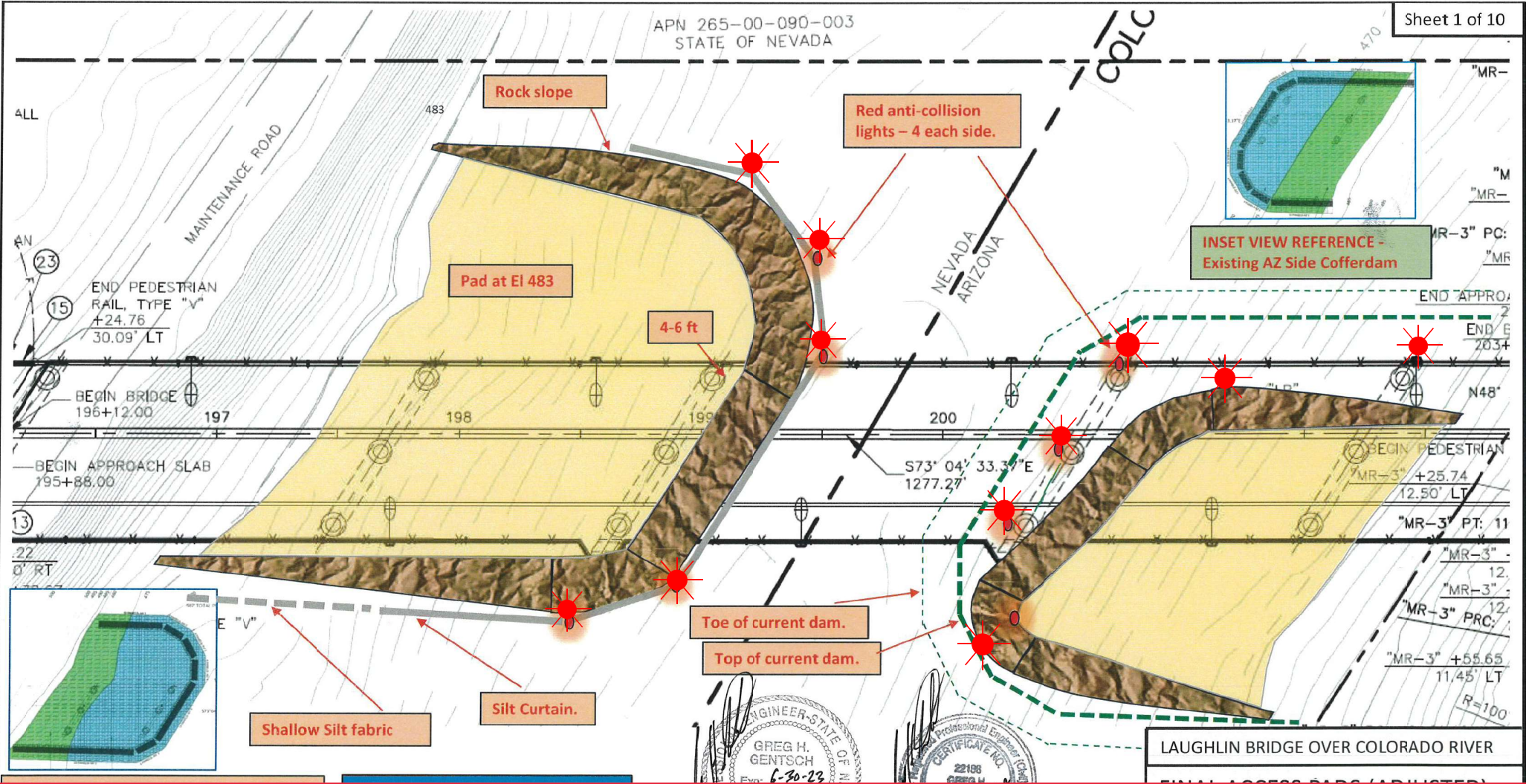


**Temporary Navigation Lighting-Crows Landing Bridge Replacement Project - San Joaquin River**

The temporary bridge, the replacement bridge and existing bridge will be lighted at night with two red lights marking the temporary navigation channel. The temporary falsework will be lighted, upriver and downriver, with green lights marking the center of the temporary navigation channel. During construction the temporary navigation channel will provide a horizontal clearance of 15 feet and a vertical clearance at Ordinary High Water of 16 feet.

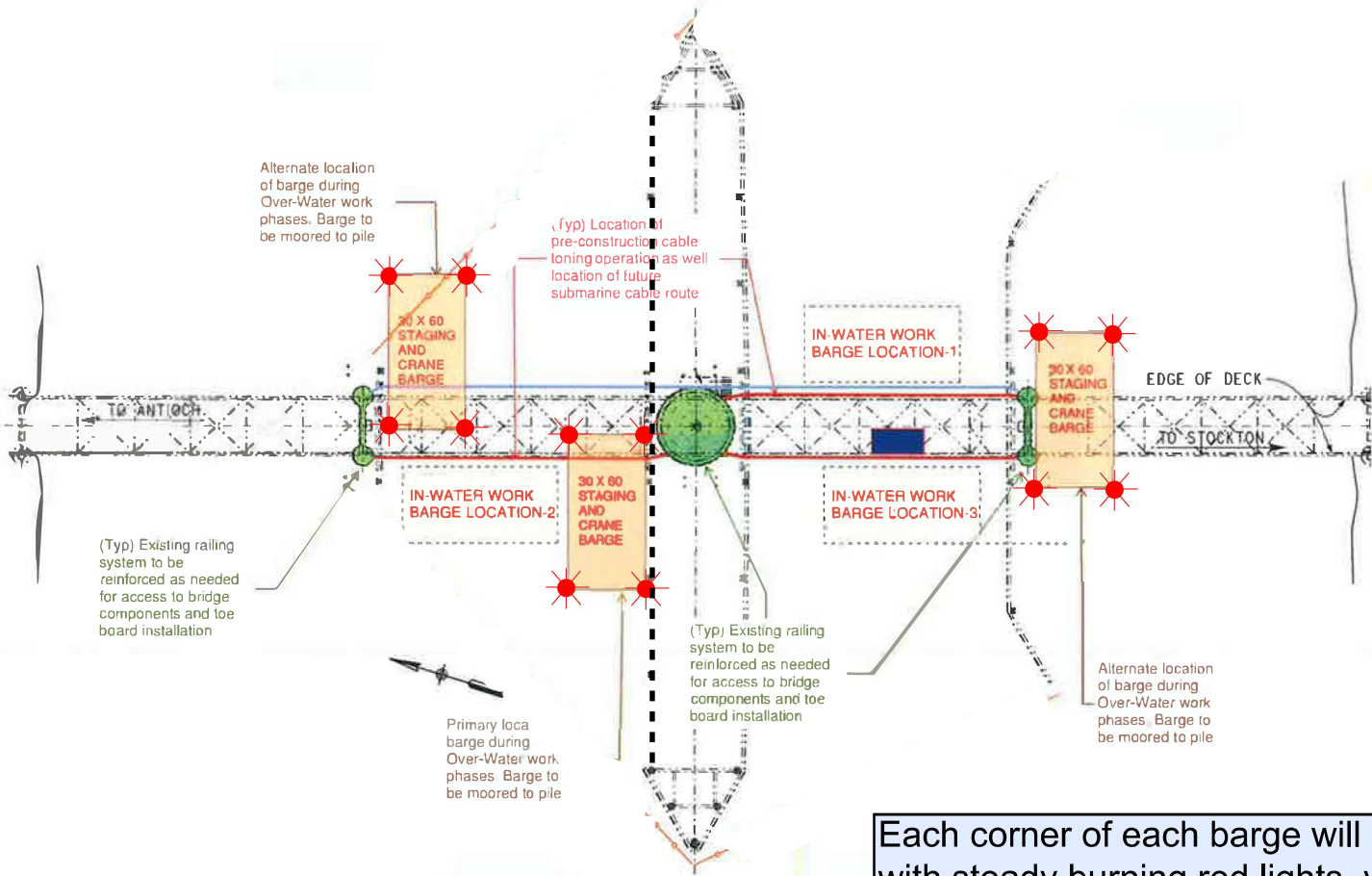


**New Laughlin-Bullhead City Bridge Construction  
Mile 261.6 over the Colorado River  
Temporary Rock Access Pad and Pier Lighting**



Once installed, the Nevada side silt curtain will be lit at night with steady burning red lights, visible at 2,000 yards by approaching vessels. The Arizona side exposed bridge piers and upstream and downstream ends of the rock access pad will be lit at night with steady burning red lights, visible at 2,000 yards by approaching vessels. There will be approximately 117 feet of horizontal clearance from the face of the silt curtain to the face of the Arizona side pier, in the center of the river.

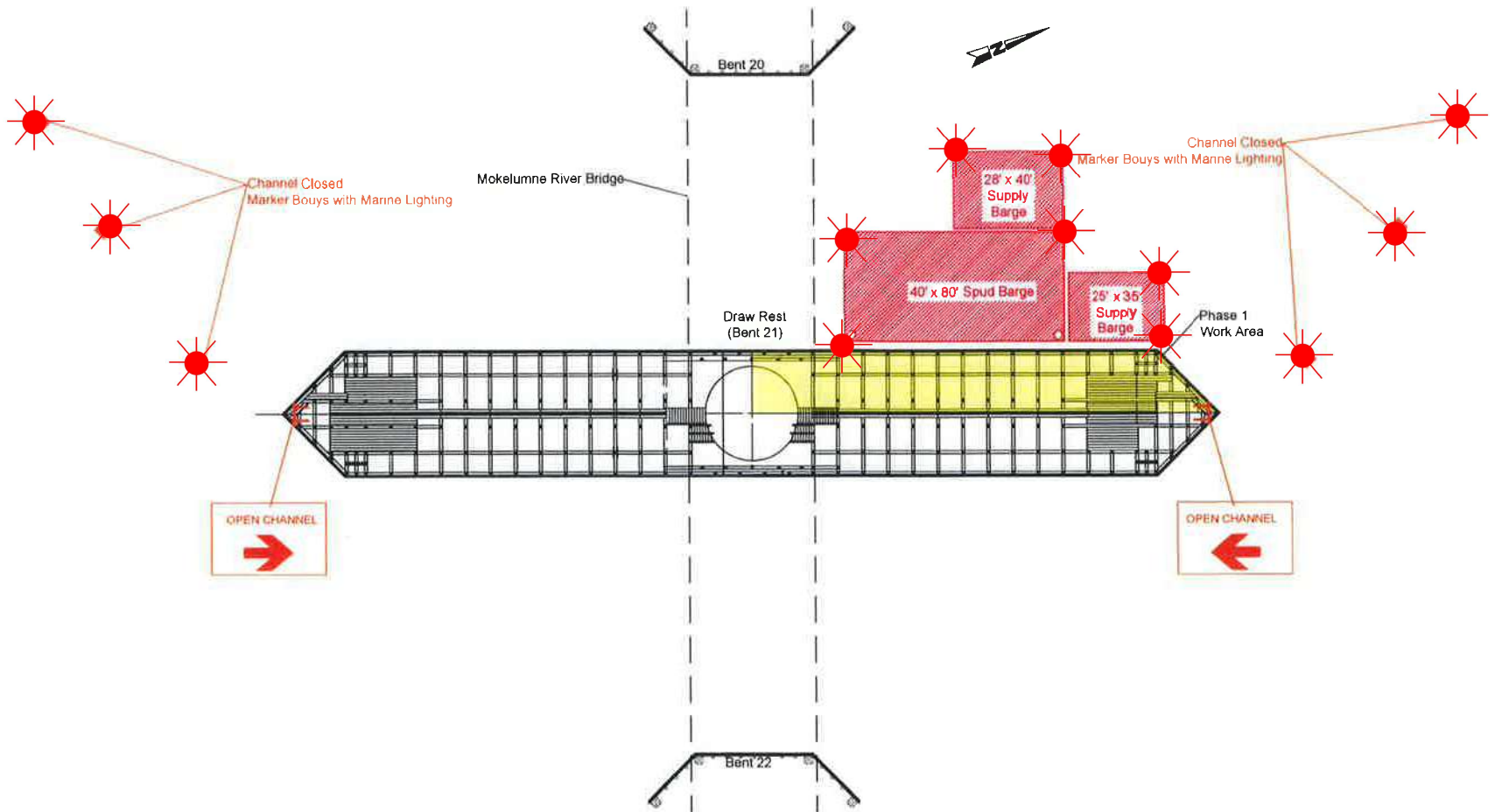
# Barge Lighting Plan Highway 4 Drawbridge Mile 14.8, Old River



Each corner of each barge will be lighted at night with steady burning red lights, visible at 2,000 yards from approaching vessels.

# Rehabilitation CA Route 12 Bridge, Mile 3.0, Mokelumne River

## Typical Barge Lighting Diagram



Each corner of each barge is lighted with fixed red lights visible at 2,000 yards by approaching vessels. The barge configuration and bouy locations will change areas throughout the project.



## RESEARCH EQUIPMENT IN WATER

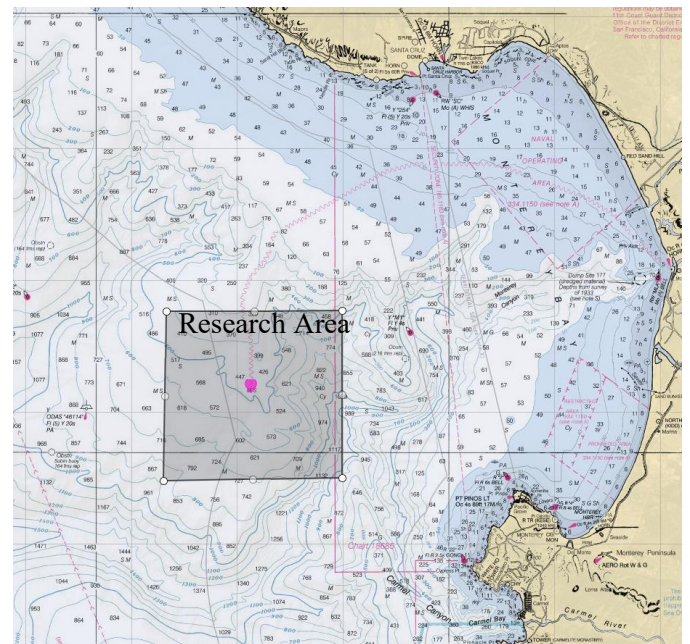
Monterey Bay  
February 2023

SAILDRONE, INC. will operate an Unmanned Surface Vehicle called Saildrone conducting research in the Monterey Bay in the vicinity of position of 36° 42.7'N, 122° 11.2'W

**VESSELS ARE REQUESTED TO TRANSIT THE AREA WITH CAUTION, AND REMAIN GREATER THAN 500 METERS AWAY FROM THE RESEARCH EQUIPMENT.**

Saildrones are wind powered Unmanned Surface Vehicles that carry important oceanographic and fisheries acoustics research instrumentation and are controlled from shore through satellite communications.

- **Color: Orange**
- **Light: white all-round light**
- **Radar Reflector: Yes**
- **Notation: "Saildrone"**
- **Length: 23 ft & Width: 2 ft**
- **Height: 16 ft above water line**
- **Draft: 6 ft, Avg. speed: 3 kts**
- **GPS / AIS / Cameras: Yes**



SAILDRONE MISSION CONTROL

(510) 722-6070

[missioncontrol@saildrone.com](mailto:missioncontrol@saildrone.com)

## RESEARCH EQUIPMENT IN WATER

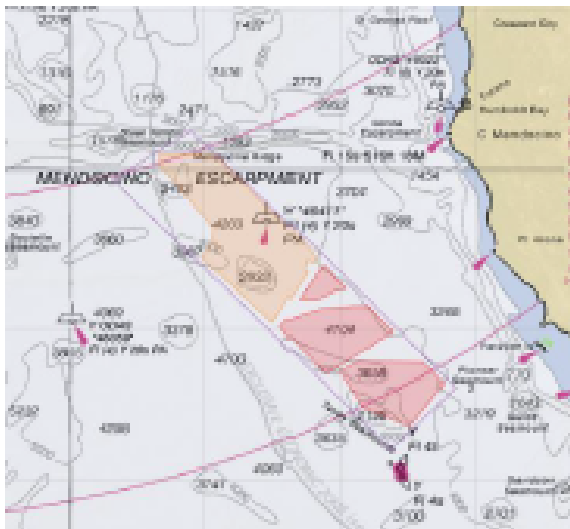
California Waters  
Jan 23rd, 2023 to Feb 28th, 2023

SAILDRONE, INC. will operate one Uncrewed Surface Vehicle called “SAILDRONE SURVEYOR”, for bathymetric research along the Northern California coastline. SAILDRONE SURVEYOR will be conducting survey operations in the area listed below from the time it arrives to the area until February 28th, 2023 periodically returning to Alameda, CA for scheduled maintenance.

**VESSELS ARE REQUESTED TO TRANSIT THE AREA WITH CAUTION, AND REMAIN GREATER THAN 500 METERS AWAY FROM THE RESEARCH EQUIPMENT.**

Saildrone Surveyor is a primarily wind powered Uncrewed Surface Vehicle also equipped with an inboard engine. Surveyor carries oceanographic and fisheries acoustics research instrumentation and is controlled from shore through satellite communications.

- **AIS:** “SAILDRONE SURVEYOR”
- **MMSI:** 338179262
- **Color:** Orange
- **Lights:** Tricolor, Running lights/stern light
- **Radar Reflecting:** Yes



- **Length:** 22 m
- **Width:** 1.8 m
- **Height:** 14 m
- **Draft:** 3.6 m
- **Average speed:** 7 knots

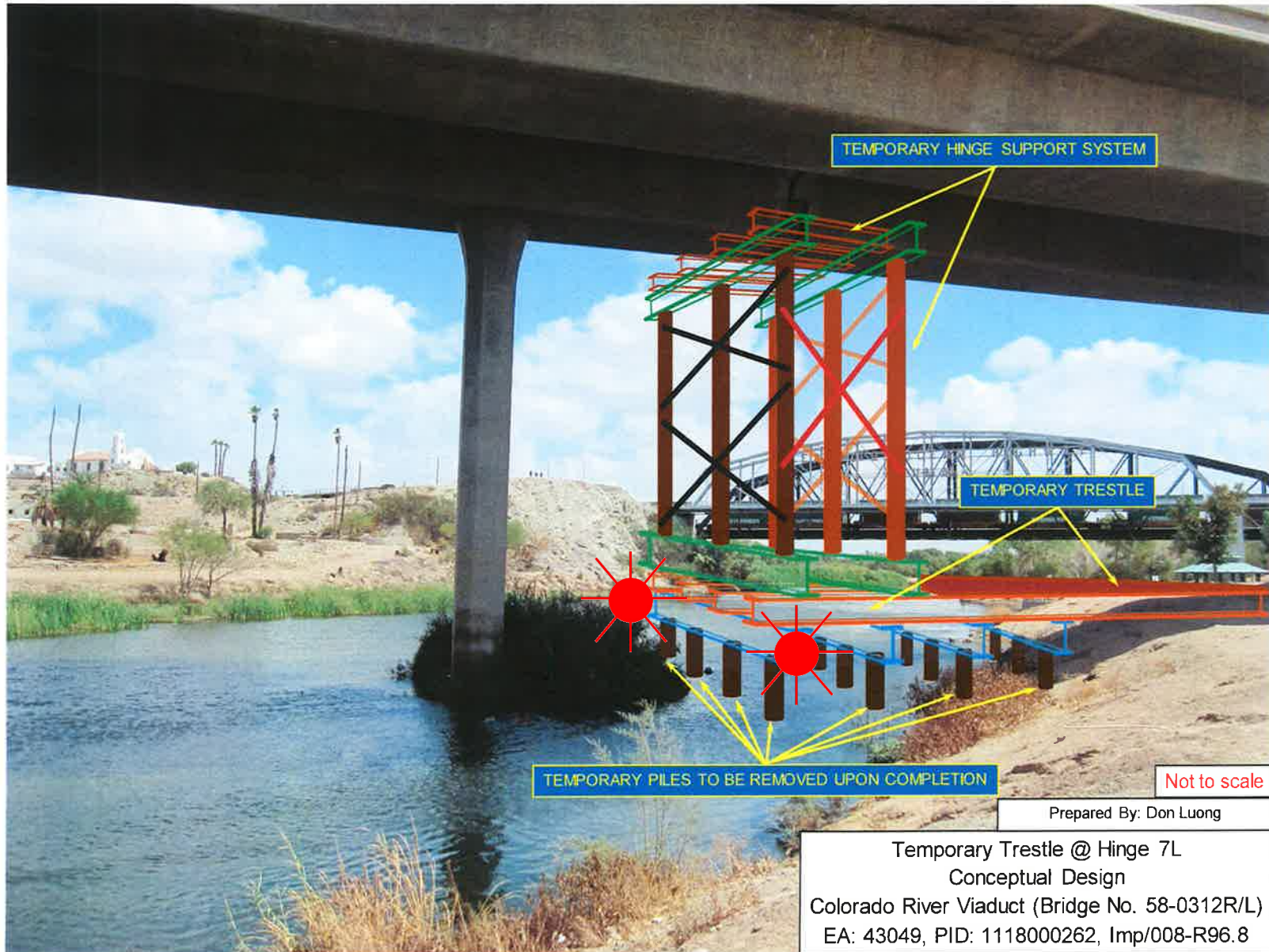
SAILDRONE MISSION CONTROL  
(510) 722-6070  
missioncontrol@saildrone.com



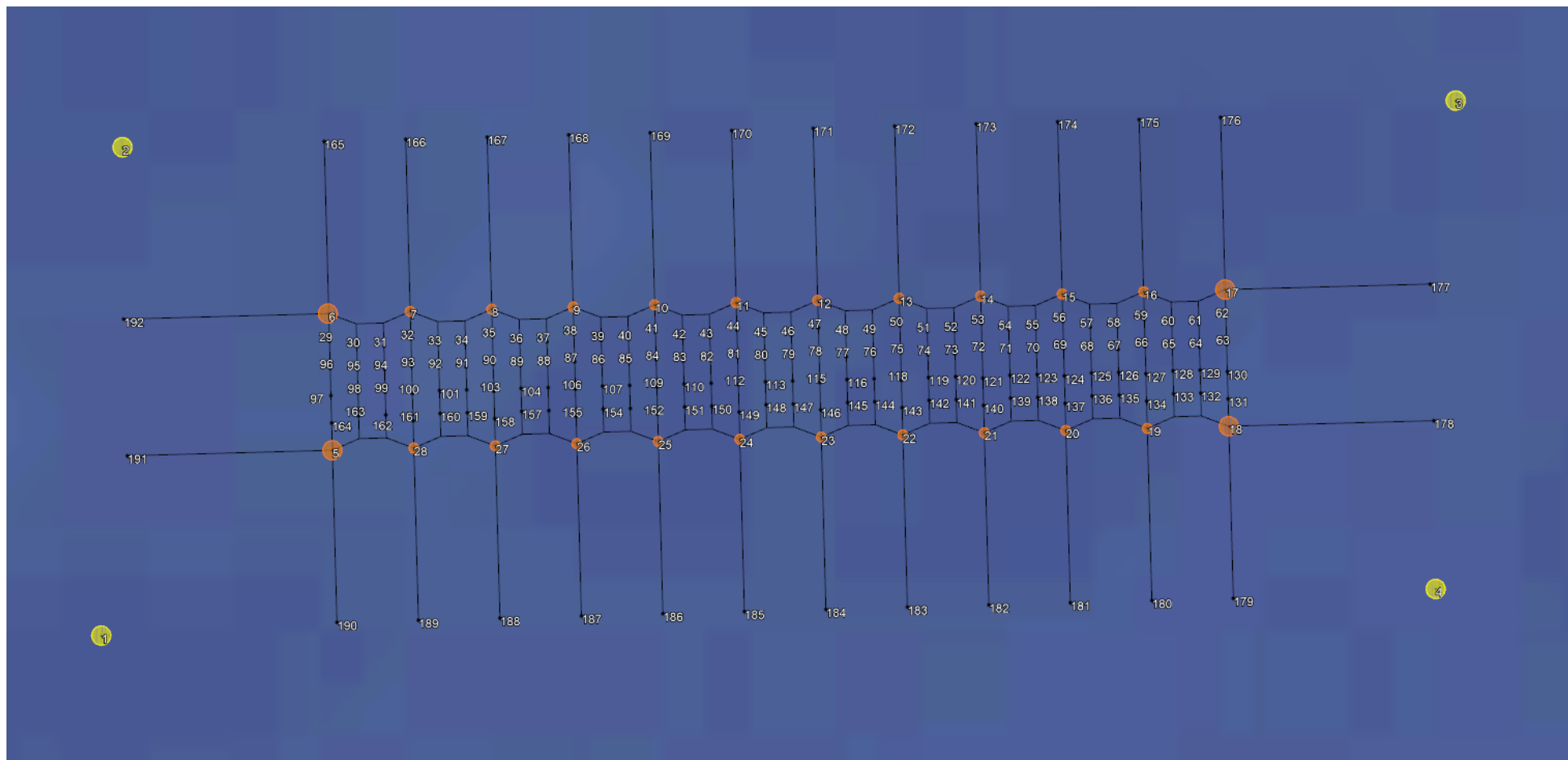
# Bridge Repairs

## Interstate 8 Bridge, mile 30.4, Colorado River

### Temporary Trestle/Falsework Lighting



Each channel ward corner of the temporary trestle/falsework is lighted at night with steady burning red lights visible at 1,000 yards by approaching vessels.

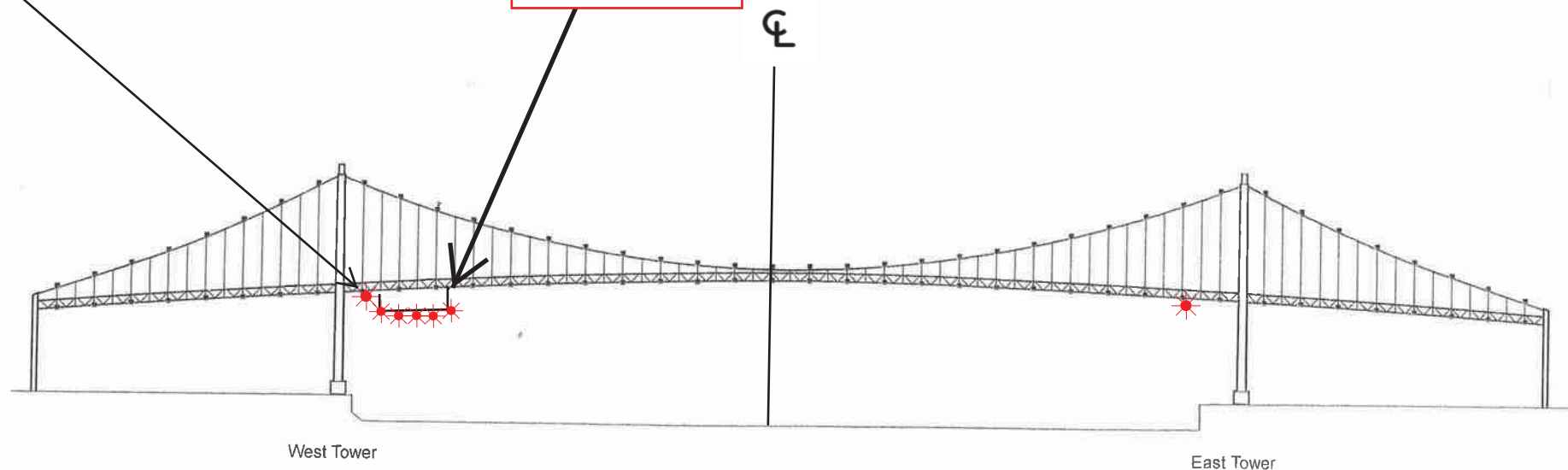




Vincent Thomas Highway Bridge  
Mile 3.0  
Los Angeles/Long Beach Harbor  
**Painting Project**

West Channel Margin  
Light

Below Low Steel  
Platform. 5' 4"  
reduction in  
vertical clearance



A 180 foot long under deck temporary platform will reduce vertical clearance by 5' 4". Each corner and every 50 feet along the the upstream and downstream side of the platform will lighted at night with steady burning red lights visible at 2000 yards by approaching vessels. In a duration of 1-year the platform will progress from the western channel margin light to 250' west of the centerline of the bridge.